



APARNA

Lead the future

Flow together

APARNA HILL PARK
Lake Breeze
Lovenests @ Miyapur, Chandanagar



LIFE IS MORE OF AGREEING TO DISAGREE

Life begins to mature when you respect each others views. Moving forward together inspite of conflicting views. In other words, life thrives when we flow together.

Aparna HillPark LAKE BREEZE is the most conclusive response to the power of sharing as an alternative to every other expression of life.

In design, form and function, this exclusive gated community is designed to stand for peace of life everyone aspires to, but very few experience it.

At Aparna HillPark LAKE BREEZE sharing means waking up to life and living it to its fullest. Reclaiming it as the basis of all that you want to do.

Aparna HillPark LAKE BREEZE. Discover a place where you will willingly share your destinies together.



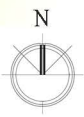
SITE MAP



- Total area: Approx 12+ acres.
- Built up Area: 1,524,935 sq ft
- No. of Apartments: 943 Apartments (2 & 3 BHK East & West Facing)
- No. of Towers: 11
- No. of Floors: Cellar (2 Levels)
Ground + 14 floors

LEGEND :

1	MAIN ENTRANCE
2	EXIT GATE
3	ENTRANCE WATER FEATURE
4	LIGHT & DARK GREY COBBLES
5	RED COBBLES
6	V.D.F FLOORING WITH BROOM FINISH
7	INTERLOCKING PAVERS
8	WASH CONCRETE
9	VISITORS PARKING
10	FITNESS STATION
11	PATHWAY
12	CHILDREN'S PLAY AREA NEAR BLOCK - A
13	LAWN
14	OPEN SPACE ENTRANCE AT +84.65 LEVEL
15	STEPS
16	CHILDREN'S PLAY AREA NEAR PLAY COURTS
17	STEEPED SEATING WITH PAVED DECK
18	KID'S PLAY AREAS
19	TENNIS COURT
20	BASKET BALL COURT
21	ENTRANCE FROM 88.00 LVL TO 82.50 LVL.
22	SWIMMING POOL DECK
23	MAIN SWIMMING POOL
24	KID'S POOL
25	INFINITY EDGE
26	AMPHITHEATER
27	WATER BODY WITH SPECIMEN TREES
28	CHILDREN'S PLAY AREA NEAR SWIMMING POOL
29	PERGOLA UNDER PAVED DECK
30	SKATING RINK
31	PAVED DECK
32	SEATING DECK UNDER TENSILE STRUCTURE
33	PORTAL FRAME UNDER PATHWAY
34	MEDITATION
35	OPEN SPACE ENTRANCE DECK WITH TENSILE STRUCTURE (FROM +84.65LVL.)
36	VIEWING DECK AT + 91.20 LEVEL.
37	JOGGING TRACK
38	STEPPING STONES
39	BLOCK ENTRANCE
40	CHILDREN'S PLAY AREA IN BETWEEN BLOCK-C&D
41	ROCK GARDEN
42	ELDERLY SEATING DECK UNDER PERGOLA
43	SEATING DECK UNDER PERGOLA
44	STONE BANDS AS A FIRE ACCESS
45	STAIR CASE FROM +94.40 LVL TO +88.00 LVL.
46	RAMP FROM +94.40 LVL TO +91.20 LVL.
47	CHILDREN'S PLAY AREA NEAR I-BLOCK
48	ENTRANCE PAVED DECK
49	2 NO'S BADMINTON COURTS
50	PERGOLA UNDER PATHWAY
51	STONE BANDS



SEE WHAT ELSE YOU GET TO SHARE

At Aparna HillPark LAKE BREEZE we understand that every resident may have a different set of requirements. So we found a lifestyle solution that offers a varying degree of comfort, space and luxury.

Club @ LAKE BREEZE is designed to take the worries off you as it skillfully takes care of everything you'd need for relaxation.

Imagine coming home and being able to shut off the hustle and bustle of the world. Just you and your family and the professionally trained Club staff waiting to provide you the comfort and care that you well deserve.

A place to have a quick snack, a high powered workout, a relaxing dip in the cool pool... all at your beck and call. These are just some of the many advantages of living at Aparna HillPark LAKE BREEZE @ Miyapur, Chandanagar.

- Well equipped Clubhouse
- AC Gym & Fitness Centre
- 1 Tennis Court, Basket Ball Regular Court, Two Outdoor Shuttle Courts
- Large Swimming Pool & AC Multi-function Hall
- Adequate power back-up for common areas, lifts & Apartments
- 24-Hour Surveillance
- High quality materials & strict construction procedures & schedules
- Project Management Consultancy (PMC) by JLL - Jones Lang LaSalle
- Just adjacent to a large perennial lake
- 100% vastu compliant
- Exclusive Supermarket, right next to the project
- AC Shuttle Bus Service from site to main road



NOT TOO FAR, NOT TOO CLOSE

When it comes to ensuring the success of a gated community, location is a fundamental factor, and Aparna HillPark LAKE BREEZE reinforces this point.

Nestled amidst sylvan surroundings, this smart living development occupies a prime position within the main suburban area of Chandanagar -- a thriving new district that is set to become a major hub of commercial and residential activity.

Aparna HillPark LAKE BREEZE is in the middle of the city, yet seemingly a million miles away. That's how living in Aparna HillPark LAKE BREEZE gated community will feel like.

- 8 kms from Hi-Tec City & Madhapur
- 10 kms from the Financial District, Microsoft, Infosys, ICICI
- Close to JNTU & Engineering Colleges
- Close to St. Anns, Silver Oak, Sancta Maria & other reputed schools
- Close to Industrial Hubs of Miyapur, Bolaram, Kazipalle & Patancheru
- Close to Shopping & Entertainment centres
- Exclusive supermarket right next to the project



*Distances indicated are approximate.

*Map not to scale

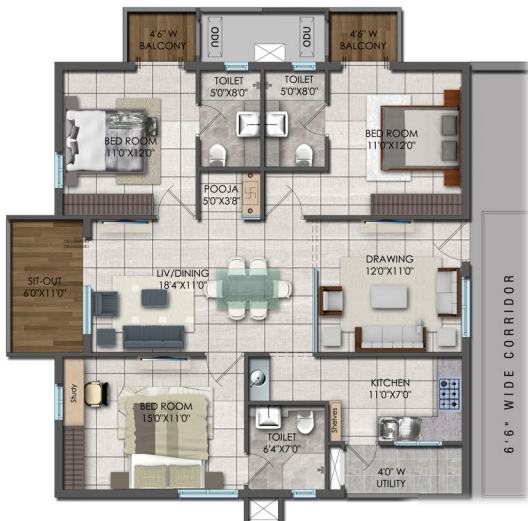
SHARING EVERY PLAN

- 2 BHK - 1295 sft
- 3 BHK - 1610 sft • 1695 sft • 1825 sft • 2250 sft • 2335 sft

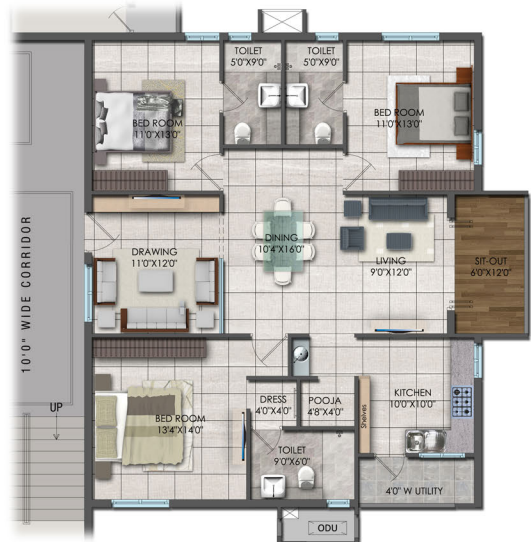
East Facing 2BHK (1295 Sft)



East Facing 3BHK (1610 Sft)



East Facing 3BHK (1695 Sft)



West Facing 3BHK 1825 Sft)

SPECS WE WILL LOVE TO SHARE

SPECIFICATIONS

Framed Structure : R.C.C. framed structure to withstand Wind & Seismic Loads

Superstructure : 8" thick solid block work for external walls & 4" thick solid block work for internal walls

Plastering

I Internal : 1 coat of plastering in CM 1:6 for walls & ceiling

I External : 2 coats of plastering in CM 1:6 for external walls

Doors

I Main Door : Teak Wood/machine made frame with moulded paneled shutter doors with Melamine polishing & reputed make fittings

I Internal Doors : Teak Wood/machine made frame with moulded paneled shutter doors with painting & reputed make fittings

I French Doors, if any : uPVC door frames with float glass paneled shutters & designer hardware of reputed make

I Windows : uPVC Window system with Float Glass with suitable finishes as per design, with provision for mosquito mesh track (Mesh & fixing has to be at the cost to client basis only)

I Grills : Aesthetically designed, Mild Steel (M.S) grills with Enamel paint finish up to 2nd Floor. No grills would be provided from 3rd Floor onwards

Painting

I External : 2 coats exterior Acrylic Emulsion Paint of reputed make, over a coat of primer

I Internal : Smooth putty finish with Acrylic Emulsion Paint of reputed make, over a coat of primer

Flooring

I Living, Dining, Bedroom & Kitchen : Vitrified Tile of reputed make (24"X24")

I Bathrooms : Acid Resistant, Anti-Skid Ceramic Tiles of reputed make

I Corridors : Vitrified Tile of reputed make (24"X24")

I Staircase : Marble/Kota/Tandoor blue

Tile Cladding

I Dadoing in Kitchen : Glazed Ceramic Tiles dado up to 2'-0" height above kitchen platform of reputed make

I Bathrooms : 8"x12" Glazed Ceramic tile dado of reputed make up to 7'-0" height

I Utilities : Glazed Ceramic Tile Dado up to 3'-0" height 8"x8" of reputed make

Kitchen

1. Granite Platform with Stainless Steel Sink
2. Provision of treated water (Manjeera or any other water provided by GHMC along with Bore well water)
3. Provision for fixing of Aqua guard
4. Provision for exhaust fan and chimney

Utilities/Wash

: Provision for Washing Machine & Wet Area for Washing Utensils etc.

Bathrooms

1. Vanity type wash basin
2. EWC with Flush Tank of reputed make
3. Hot & Cold wall Mixer with Shower
4. Provision for Geysers in all Bathrooms
5. All C.P. Fittings are Chrome plated of reputed make

Electrical

1. Concealed Copper Wiring of reputed make
2. Power outlets for Air Conditioners in all bedrooms
3. Power outlets for Geysers in all bathrooms
4. Power plug for cooking range chimney, refrigerator, microwave ovens, mixer / grinders in kitchen
5. Plug points for T.V. & Audio Systems, etc.
6. 3 phase supply for each unit & individual Meter Boards
7. Miniature Circuit Breakers (MCB) for each distribution boards of reputed make
8. Switches of reputed make

Telecom

1. Telephone points in Living, Dining Areas, Master Bedroom & Children's Bedroom
2. Intercom facility to all the units connecting Security

Cable TV

: Provision for Cable Connection in Master Bedroom & Living Room

Internet

: 1 internet provision in each flat

Lifts

1. 1 Automatic Passenger and 1 Goods Lift per block with rescue device & V3F for energy efficiency.

2. Entrance with Vitrified Tile Cladding

WTP & STP

: Provision of Water Treatment Plant (WTP) & Sewerage Treatment Plant (STP)

Car Wash Facility

: Car Wash Facility will be provided (Charges for car wash facility would be extra)

Generator

: 100% D.G. Set backup with Acoustic enclosure & A.M.F for Common Areas & also D.G. backup for 6 electrical points for all 2 BHK apartments & 7 electrical points for all 3 BHK apartments

NO CUSTOMISATION / NO CHANGE IN SPECIFICATIONS

Some of our completed projects in Hyderabad



APARNA KANOPY TULIP (2012)
360 Value apartments - Phase 1A
Gundlupochampally, Kompally



APARNA HILLPARK BOULEVARD (2012)
94 Premium villas, Miyapur, Chandanagar



APARNA CYBER COMMUNE (2011)
730 Hi-end apartments, Nallagandla



APARNA SAROVAR (2010)
1120 Lifestyle apartments @ Nallagandla



APARNA HIGHTS 2 (2010)
96 Super deluxe apartments, Kondapur



APARNA CYBER COUNTY (2009)
59 Independent Villas, Gopannapally



APARNA TOWERS (2008)
312 Super deluxe apartments, Kondapur



APARNA COUNTY (2008)
125 Independent villas, Hafteezpet



APARNA SHANGRI-LA (2008)
40 Independent villas, Gopannapally, Gachibowli



APARNA ORCHIDS (2006)
59 High-end independent villas, Hitec



APARNA RESIDENCY (2006)
30 Elegantly designed apartments, Kondapur



APARNA HIGHTS (2006)
132 Super deluxe apartments, Kondapur



APARNA CHANDRADEEP (2006)
30 Ultra deluxe apartments, Banjara Hills



APARNA SENOR VALLEY (2005)
40 Designer villas, Jubilee Hills



APARNA LAKE VIEW (2002)
20 High-end super deluxe apartments, Begumpet

Projects under implementation in Hyderabad



**APARNA KANOPY LOTUS
(Work in progress)**
91 Value Villas, Gundlupochampally, Kompally



**APARNA AURA
(Work in progress)**
135 Super Luxury Residential Apartments, Jubilee Hills



**APARNA HILLPARK AVENUES
(Work in progress)**
647 Smart Apartments, Miyapur, Chandanagar



**APARNA CYBERZON
(Work in progress)**
1530 Cyber Homes, Nallagandla, Gachibowli



**APARNA HILLPARK GARDENIA
(Work in progress)**
116 Premium Luxury Villas, Miyapur, Chandanagar



**APARNA SAROVAR GRANDÉ
(Work in progress)**
720 Luxury Lifestyle Apartments, Nallagandla

APARNA BRAND ADVANTAGE

Top-of-the-line Specs & Amenities
Transparency in Documentation
Uniform Pricing

APARNA
Lead the future

Property Management Services
On-time Project Completion
Assured Quality Living



*Conditions apply.

Disclaimer: The plans, specifications, images and other details herein are only indicative and the Developer/ Owner reserves the right to change any or all of these in the interest of the development.