



**Tulip Infratech Pvt. Ltd.**

Regd. Office : 12<sup>th</sup> floor, Indra Prakash Building, 21 Barakhamba Road, New Delhi - 110001, India  
Ph.: +91-11-4151 2001, 4151 2002, 4351 5660/61/62 | Fax: +91-11-2373 1000  
Email - info@tulipgroup.in | Website - www.tulipgroup.in

Design : www.whitelight.in | 9810014114

**Tulip** *Ace* GURGAON  
Premium Air Conditioned Apartments / Penthomes

*the mastery  
of wisdom*



ISO 9001:2000 compliant  
five awards in the past year for excellence in business

large scale residential projects already underhand

commercial projects  
multiplex projects

'Living should never be an impersonal experience' is a principle deeply rooted within all those related to Tulip Infratech. This belief trickles down to the development of each project being an amalgamation of superior engineering and personalization of a home environment. Tulip Infratech is committed to creating the ideal living space with a harmonic blend of aesthetics and comforts. Maintaining the highest standards of quality has always been given the highest priority at Tulip Infratech, and this has been most evident from the two existing projects that have been runway extravaganzas – Tulip Grand and Tulip Petals. Both of these group housing projects belonging to the realm of holistic residential solutions, have revolutionized lifestyles within the real estate industry.



The Gurgaon district, situated in the NCR of Delhi, is approximately 7 kms away from the Indira Gandhi International airport, Delhi and rapidly becoming the North Indian hub for entertainment, tourism and, most of all, business. Even though the district has been in existence since the times of Mahabharata, Gurgaon has grown extensively during the last decade due to its proximity to Delhi and is now considered to be a major outsourcing destination and real state market in Northern India. An important town in ancient Hindu mythology, Gurgaon hasn't let go of its heritage and culture during the growth of the city over the past few years. Along with all the city's attractions, Gurgaon has an impressive list of top class hotels, large shopping malls and state of the art medical facilities to add to its lure.

located on sector-89, main pataudi road, gurgaon

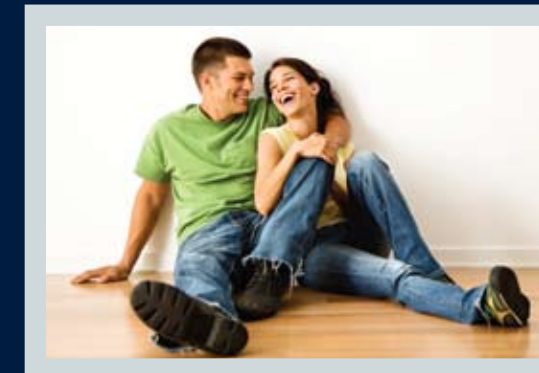
75m wide approach road

30m green belt on either side

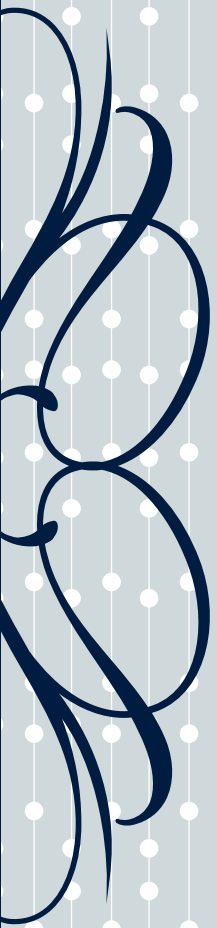
next to upcoming metro station

20 minutes from airport

near KMP expressway



*voyage of a  
destination*



*the aura of  
prestige*



3/4/5 bedroom premium apartments/penthomes

**70% greens**

fountains

majestic entrance with landscaping

**vaastu compliant**

grand gated complex

**24x7 three tier security**

The amalgamation of finesse, prestige, elegance and the characterization of royalty is what Tulip Ace as a home represents. Ace, as the name itself describes, would be the elitist and most exclusive abode in the area uniting only the best in an array of considerable factors which are completely based on multi-international levels. The luxe living at the Tulip Ace, not only sets a bar to which all lavish homes will now have to measure up to, but it also completely redefines the norms of lavish lifestyles. If homes are considered to be the extension of your personality, then Tulip Ace successfully transcends from being superior real estate to becoming an absolute status symbol.





air conditioned lobby dedicated car parking

apartments overlooking landscaped greens

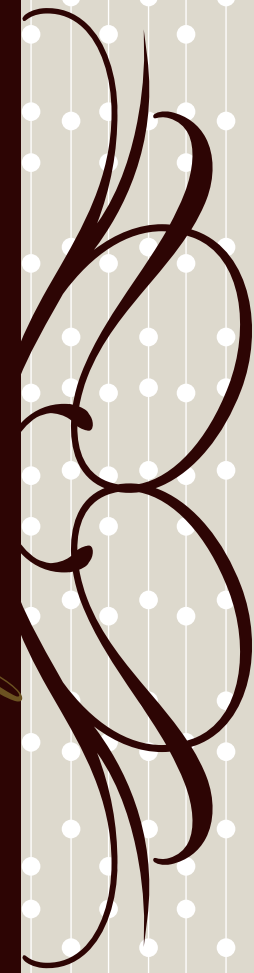
high speed elevators **100% power backup**

**fire safety** broadband connectivity

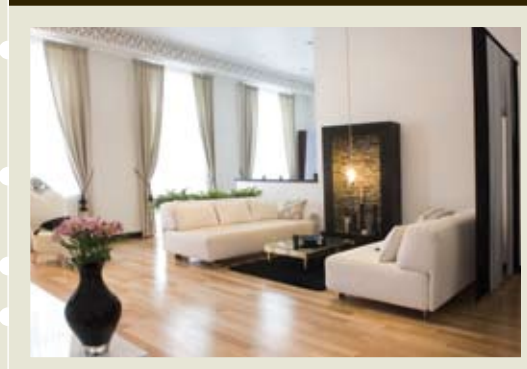
piped gas supply separate room & toilets for drivers



*the repute  
of an abode*



*the essence  
of comfort*



fully air conditioned apartments

large family space

entrance foyer for privacy

kitchen designed to ensure maximum efficiency

modular kitchen

jacuzzi and shower cubical in master bathroom

imported laminated wooden flooring

accentuated natural light

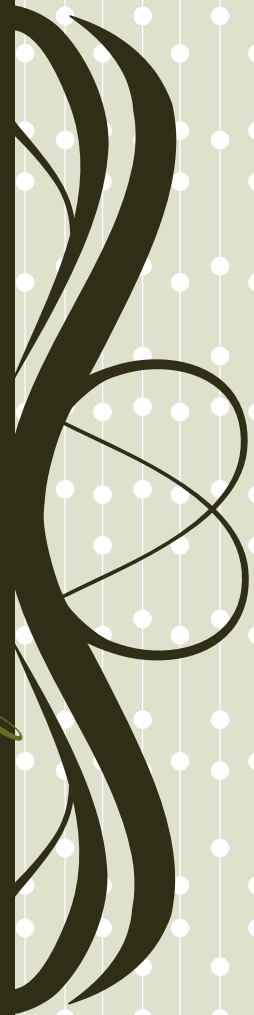




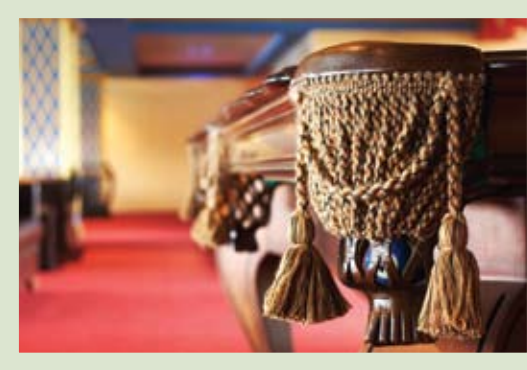
swings and sand pits for kids  
central park with water bodies  
nursery school for kids  
kids bus shelter  
tennis court  
convenience store



*the quality  
of excellence*



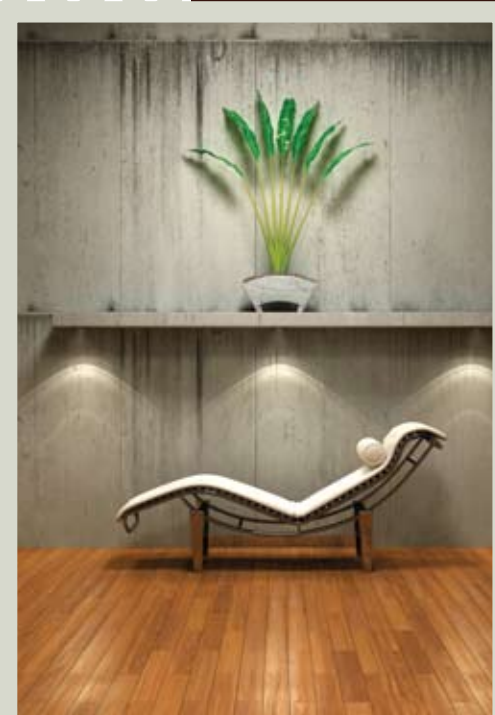
*the persona  
of a home*



world class club house  
steam and sauna bath **swimming pool**  
array of recreational and leisure pursuits  
card room snooker and billiards room  
tv lounge with coffee shop **massage room**  
restaurant community hall



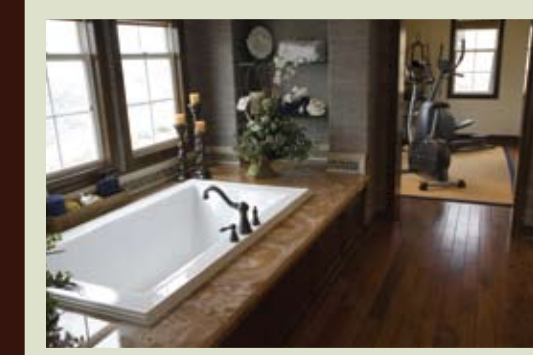




## Specifications

Structure		Earthquake resistant RCC structure
Living / Dining	Floor	Imported Marble
	Walls and Ceiling	Acrylic emulsion paint on POP punning with Cornice
Bedrooms	Floor	Imported Laminated wooden flooring
	Walls and Ceiling	Acrylic emulsion paint on POP punning with Cornice
Doors	Internal door	Polished Hardwood Frame with Polished Moulded Skin Doors
	Entrance doors	Veneered and polished flush shutter / Moulded Skin Door
	Hardware	Shutter hinges in brass. All other hardware in brass. All doors except those in Toilets & Kitchen are provided with a mortice lock.
Windows		Re-inforced UPVC/Aluminium anodized windows with sliding glass shutter
Toilets	Walls	Combination of one or more of Vitrified Tiles / Ceramic Tiles / Marble / Stone / Mirror / Acrylic emulsion
	Floor	Combination of one or more of Vitrified Tiles / Ceramic Tiles / Marble / Stone
	Counters	Marble / Granite
	Fittings	Jacuzzi & shower cubical in Master Bedroom. Single lever C.P. fittings, EWC, Convention fittings & Indian WC in servant's toilet
Modular Kitchen	Walls	Ceramic tiles upto 2'0" above counter and acrylic emulsion paint
	Floor	Combination of one or more of Vitrified Tiles / Ceramic tiles / Marble / Stone
	Cabinets	Imported Modular Cabinets with granite counter
	Fitting / Fixtures	C.P. fittings, double bowl stainless steel sink with drain
Balcony	Floor	Combination of one or more of Indian Marble / Terrazzo / Stone Tiles
	Walls	Textured Paint / Permanent Finish
	Ceiling	Acrylic emulsion paint or equivalent
External Finishes		Combination of one or more of Texture Paint / Stone / Paint
Servant Room	Floor	Terrazzo / Ceramic Tiles
	Walls and Ceiling	Dry distemper
Electrical Work		Copper wiring with concealed PVC conduits. Sufficient lighting and power points, modular switches, telephone and TV points in each room.
Security System		Access Control CCTV/Intercom at basement and Ground Floor (Entrance Lobby) with each apartment.
Drinking Water Supply		Through individual R.O. Plant
Gas Supply		Provision for Piped gas supply
Connectivity		Broadband Internet connectivity

Note : Features and Specifications are tentative which may vary as decided by the company/architect.



*the steps of  
perfection*



Elevation of Tulip Ace



Elevation of Tulip Ace (Night View)

*the shape  
of tomorrow*