



Total Environment Building Systems Private Limited, Imagine, No. 78, ITPL Main Road, EPIP Zone, Whitefield, Bangalore 560 066, India
T +91 80 4245 3333 M +91 98453 72222

Office Hyderabad H. No. 3 - 6 - 692, Street No - 11, Himayat Nagar, Hyderabad 500 029. T +91 40 4026 3000 M +91 90004 44884, +91 90000 44848

Site Address The Meadow Dance, Survey No 279, Beside Green Walkways, Himayat Sagor Road, Budvel, Rajendranagar,
Rangareddy District, Hyderabad 500 030

E sales@total-environment.com www.total-environment.com

THE MEADOW
DANCE

Hyderabad

LIGHT,
AIR,
SUN.
Make life beautiful.

Experience The TE Difference

Our Vision To provide an unsurpassed living experience through the creation of sensitively designed spaces.

At Total Environment, we are focused on creating spaces that you can be proud of living and working in. Our goal is to combine our professional expertise with cutting-edge technology and an out-of-the-box approach to make living more comfortable, productive and joyous. Our customers find in us a partner, who in a complete departure from the traditional industry perception, seeks to make the whole experience as warm and personal as the homes we deliver.

CUSTOMISATION pg 7 >	TECHNOLOGY 7 >	MATERIALS AND FINISHES 7 >
DESIGN pg 15 >	QUALITY 15 >	TRANSPARENCY AND ETHICS 15 >
	THE EXPERIENCE pg 21 >	OPTIMUM USE OF SPACE 21 >
		BRINGING THE OUTDOORS IN 21 >

< All the images in this brochure have been shot on-site at Total Environment projects. >

Large living space opens into the landscaped terrace garden.
The interior finishes are a combination of smooth and rough
materials. All spaces are furnished, fitted out and handed over in a
ready to occupy condition.



CUSTOMISATION TECHNOLOGY MATERIALS AND FINISHES

Understanding your needs

Customisation Our homeowners are encouraged to customise their homes to match their distinct tastes and lifestyles. Our online proprietary tool, eBUILD, helps you customise almost every aspect of your home.

Technology Our projects come with a host of technological features that have been introduced to truly enhance the quality of life of people who live in them. From the quality of finish to our RCC work, to the use of eBUILD, to the state-of-the-art home automation systems that make interaction with your home seamless and a pleasurable experience, technology is helping us deliver advanced homes of high quality, long life and efficiency.

Materials and finishes It is our attempt to give our buildings a character that is essentially grounded in nature. Our use of natural construction materials like exposed bricks and form-finished concrete, we believe, has added a new dimension to building aesthetics. Besides being maintenance-free, these materials age beautifully.





- Details of lighting, beams clad in wood and glass deck.
- Kitchen and bedrooms opening into the landscaped garden and water body bring the outdoors into every room.



- The double height ceiling, large fenestrations overlooking the landscaped garden and the absence of pillars create a scale that is rarely experienced in apartments.



- Looking in from the outside,





Our Vision is to provide an
unsurpassed living experience
through the creation of sensitively
designed spaces

DESIGN
QUALITY
TRANSPARENCY AND ETHICS

Setting us apart

Design Nature has always influenced the way we design. We design and build spaces that help connect and integrate with nature, firmly believing that "What you do and what you think is dictated by the spaces that you are in". At the core of all our work is also the fundamental understanding that the spaces we build are for people.

Quality What sets us apart is not just in sourcing of the best, but also in how we labour over all aspects of our work - from design to workmanship - that sets us apart.

Transparency and ethics Our ability to keep things simple, transparent and above board has helped build the trust our customers place in us. We seek to develop relationships that are as enduring as our buildings. We keep a stream of honest and timely communication going with our customers, building bonds even as we build homes.





- Contemporary designs in combination with obsessive detailing and high quality finishes.
- Guest bed room on the lower level opening into the landscaped garden.



Our homes are fully furnished and
can be customised to suit your
lifestyle

- Customise your wardrobes
- Walk-in wardrobe



THE EXPERIENCE OPTIMUM USE OF SPACE BRINGING THE OUTDOORS IN

Refreshingly different homes

The Experience Our customers find in us a partner, who in a complete departure from the traditional industry perception, seeks to make the whole experience as warm and personal as the homes we deliver.

Optimum use of space The carpet area of each of our homes, in all our projects, is always 80% of the super-built-area - an example of our commitment to transparency and uniform standards. This means that, when you purchase a 1000 sft apartment from us, you are assured of a carpet area of 800 sft. Our terrace gardens, being part of the built area, are included in the carpet area.

Bringing the outdoors in A first-of-its kind innovation in residential real estate projects worldwide, in 1997 we introduced the concept of cantilevered terrace gardens with every apartment. Since then our gardens have grown larger and now include features like water bodies and wooden decks - bringing the outdoors in and taking the indoors out.



- Detail of the cantilevered stairs create a sense of lightness and transparency.
- Glass dock with views into the terrace garden adjoining the family on the upper level.





The innovative use of light is a key element of the design. Large windows, glass partitions and louvres filter in natural light during the day. Features in this home have been orchestrated to address the needs of a high-quality, contemporary lifestyle.

Photography by Michael O'Connell, www.michaeloconnell.com.au



We are focused on creating physical environments that are in harmony with their surroundings



LEVEL	CATEGORY	YEAR
Winner	73 Villas and 332 Apartments	2010
Winners - Asia Pacific Region	73 Villas and 332 Apartments	2009
Winners - India Region	73 Villas and 332 Apartments	2009
1st (Winners)	Apartment Block - 120 Apartments	2009
Runner Up	Apartment Building - 16 Apartments	2007
1st (Winners)	Apartment Building - 16 Apartments	2005
1st (Winners)	Apartment Building - 24 Apartments	2003
1st (Winners)	Apartment Building - 24 Apartments	2003
2nd (Commendation Trophy)	Apartment Building - 12 Apartments	2002
3rd (Special Mention)	Apartment Building - 12 Apartments	2002
2nd (Commendation Trophy)	Corporate Campus - 35,000 sq.ft. on 3 acres	2002
3rd (Special Mention)	Race Horse Breeding Farm on 150 acres	2002

Total Environment projects have regularly found recognition over the years.

PROJECT	INSTITUTION	AWARD
Windmills of Your Mind	Durian and Society Interiors Design Awards	Sustainable Architecture
Windmills of Your Mind	International Property Awards - CNBC Arabia	Best Residential Architecture
Windmills of Your Mind	International Property Awards - CNBC Arabia	Best Residential Development (over 5 residences)
Raindrops Keep Falling on my Head Shine On 2	The Mysore Horticultural Society, Lalbagh Kansai Nerolac	Best Ornamental Gardens
Time	Architecture + Design Spectrum Foundation	Style Icon for Excellence in Architecture
The Good Earth	Architecture + Design Spectrum Foundation	Habitat Award for Apartment Planning
The Good Earth	J.K. Cements - Architect of the Year Awards	Habitat Award for Apartment Planning
Reach for the Sky	Architecture + Design Spectrum Foundation	Best Group Housing Project
Bougainvillea	Architecture + Design Spectrum Foundation	Habitat Award for Apartment Planning
Webb India Limited	Architecture + Design Spectrum Foundation	Habitat Award for Apartment Planning
The Poonawalla Stud Farms	Architecture + Design Spectrum Foundation	Institutional Architecture Award
		Young Enthused Architect

BRINGING THE AWARDS IN
setting standards





THE MEADOW DANCE in Hyderabad

These exceptional duplex homes have been created for people who share our passion for design and quality. A host of innovative features have been introduced to truly enhance the quality of life for the people who live here. The result is spaces that are smart and modern, yet warm and inviting. Experience all the benefits of an independent home together with the safety and conveniences of urban community living.

3D VIEW pg 33 >	LOCATION AND DISTANCES 35 – 40 >	PLANS 41 – 50 >	THE DETAILS 51 – 54 >
<ul style="list-style-type: none"> Computerised rendering showing a perspective view of the homes Benefits of an earth sheltered home 	<ul style="list-style-type: none"> Distance from important locations 	<ul style="list-style-type: none"> Site plan Section plans Typical lower level plan Typical upper level plan 	<ul style="list-style-type: none"> The small details that make a big difference.
THE SPECIFICATIONS pg 55 >	WE MAINTAIN pg 57 >	CHOOSE WITH EBUILD pg 59 >	
<ul style="list-style-type: none"> Structure Flooring and Tiling Sanitary and Plumbing Doors and Windows Electrical Electro-domestic equipment Cabinetry and Furniture Utilities / Services Facilities and Amenities Landscaping 	<ul style="list-style-type: none"> Housekeeping Security Equipment Amenities Conveniences Cost 	<ul style="list-style-type: none"> What is eBUILD eBUILD options 	



3D VIEW
earth sheltered duplex homes

The Meadow Dance is based on a unique concept of an earth sheltered home; a concept rarely used before in large group housing projects.

In this system of designing each home is partially set into the ground and the roof of each home (curved in profile) has an earth cover which is landscaped.

Benefits of earth sheltered homes are many varying from natural soundproofing, reduced rainwater run-off, reduced temperature variations, lesser maintenance requirements and

a harmonious blend with the surroundings.

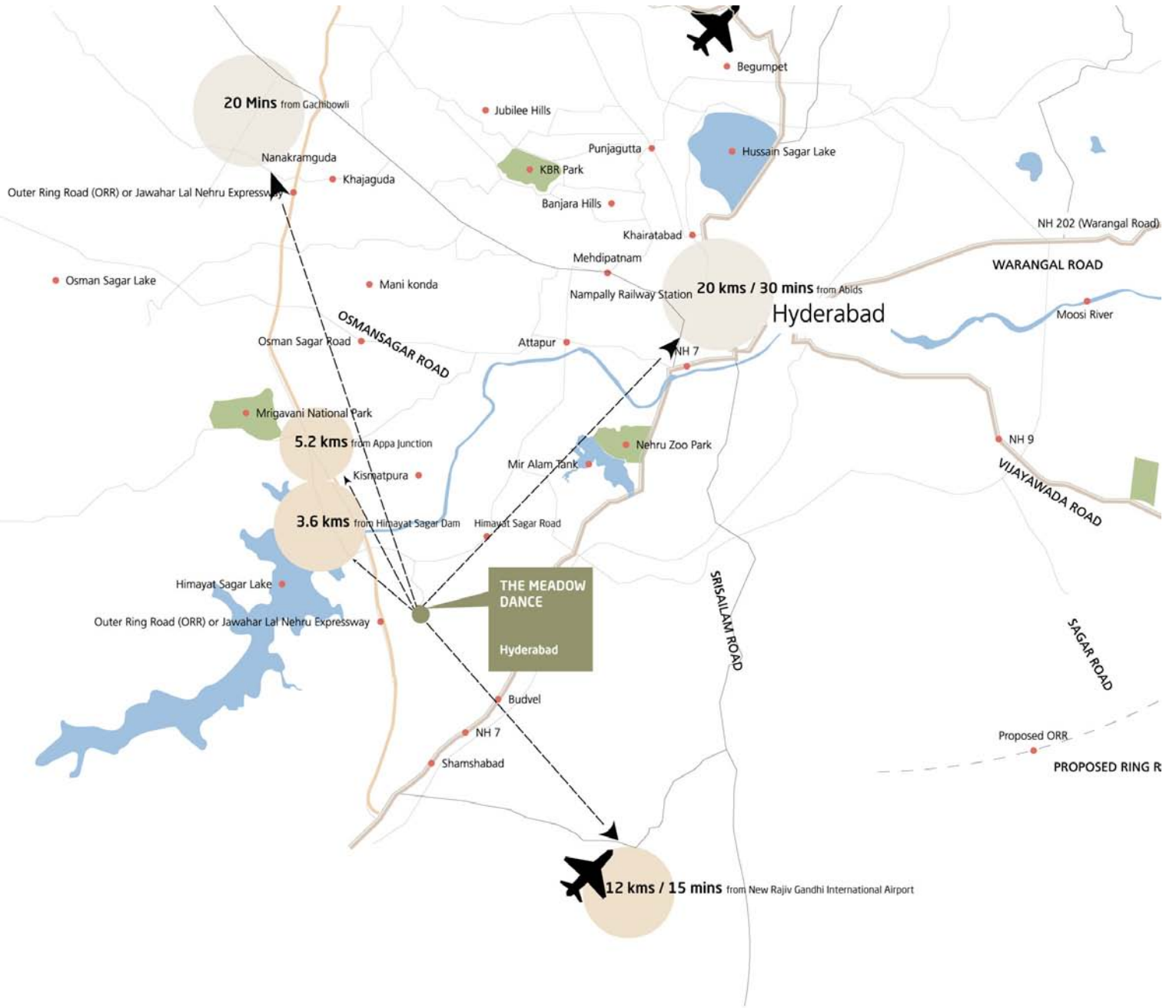
Natural soundproofing The earth cover provides very good insulation against noise pollution.

Reduction in rain water runoff The sloping roof of each of these homes is bermed with a mixture of soil and sand and landscaped. This ensures that there is a much slower rate of runoff of rain water when compared to an impervious surface like concrete, thus reducing storm water runoff for each home.

Temperature variations These homes are less susceptible to the impact of outdoor temperatures, unlike a conventional house. The lesser extent of temperature variability makes for a comfortable ambience in the living spaces.

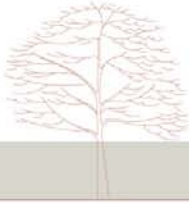
Maintenance As earth and exposed brick envelope the exteriors, these homes require less external maintenance in the form of painting or plastering.

Blend with the landscape Each of these homes are partially set into the ground, though being duplex homes, they look and feel like single level homes and are less intimidating and blend beautifully with the natural surroundings.



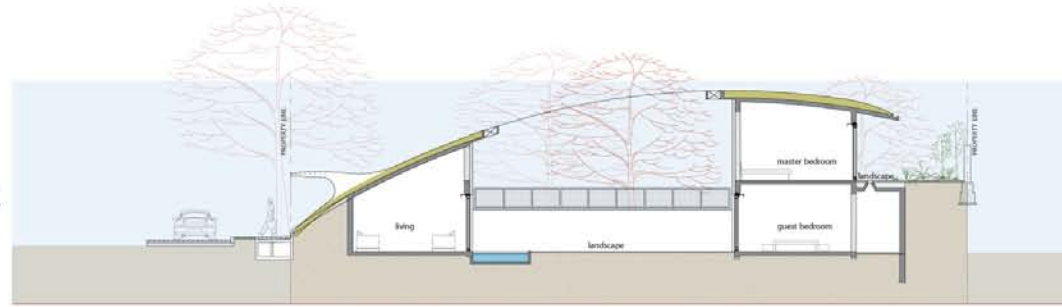
EARTH COVERED DUPLEX HOMES

- Each duplex home is 4450 sq ft in size, plot sizes vary
- Signature exteriors in exposed bricks and concrete
- All living spaces open into a private courtyard with a water body and garden, bringing the outdoors in and taking the indoors out.
- Three bedrooms
- Family space on the upper level
- Lifestyle plus specifications, with all homes furnished with wardrobes, beds and bedside tables, study tables and fully equipped modular kitchens - main and wet kitchens with every home.
- Central, hybrid air-conditioning
- Room and bath for domestic help
- Easy online customization with eBUILD



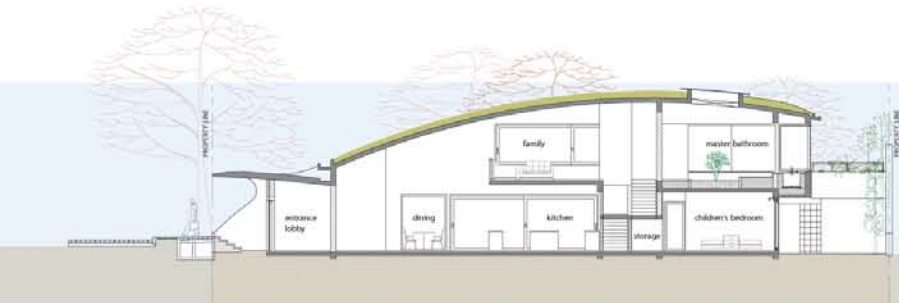
PLANS

sections and typical units



SECTION THROUGH LIVING

These homes are furnished and come with customisation options that allow you to create your home to suit your lifestyle.



SECTION THROUGH DINING



SECTION THROUGH UTILITY



View from the kitchen and dining opening into the courtyard.

View of the master bedroom opening into the terrace garden and wooden deck.



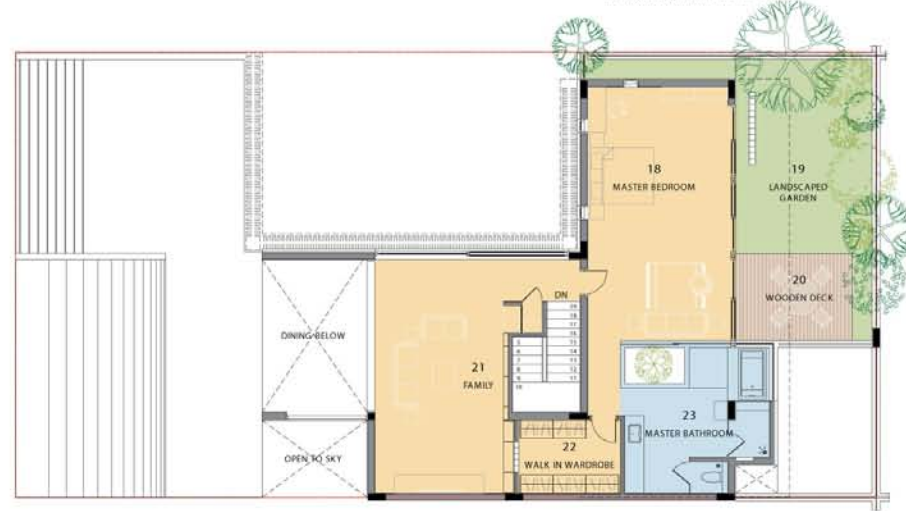


LOWER LEVEL

- 1 Living – 16' 3" x 21' 0"
- 2 Shallow water body – 8' 7" x 18' 10"
- 3 Landscaped courtyard – 28' 2" x 21' 1"
- 4 Guest bedroom – 15' 3" x 15' 4"
- 5 Bathroom – 10' 10" x 5' 6"
- 6 Entrance lobby – 7' 8" x 8' 8"
- 7 Dining – 21' 2" x 17' 7"
- 8 Kitchen – 15' 5" x 14' 7"
- 9 Sit out – 15' 0" x 9' 7"
- 10 Children's bedroom – 11' 8" x 16' 8"
- 11 Landscaped garden – 15' 0" x 15' 11"
- 12 Parking – 16' 4" x 16' 4"
- 13 Domestic help room – 5' 11" x 8' 0"
- 14 Domestic help bathroom – 5' 2" x 4' 7"
- 15 Wet kitchen / Utility – 13' 4" x 11' 4"
- 16 Walk in wardrobe – 7' 5" x 8' 0"
- 17 Bathroom – 11' 3" x 8' 5"

UPPER LEVEL

- 18 Master bedroom – 16' 2" x 27' 9"
- 19 Landscaped garden – 15' 0" x 21' 3"
- 20 Wooden deck – 12' 9" x 9' 7"
- 21 Family – 14' 7" x 25' 6"
- 22 Walk in wardrobe – 11' 2" x 8' 0"
- 23 Master bathroom – 15' 10" x 16' 8"



THE DETAILS

It's the things that you don't notice at first that set us apart

01 Unique pull-down hangers optimize space and enable easy access to your wardrobe.

02 The false ceiling enhances the visual appeal of bathrooms and keeps service ducts concealed.

03 All windows in locations that overlook a sheer drop have steel grills for added safety.

04 Drawers glide on new-generation drawer channels; an example of technology enhancing simple everyday functions.

05 Telescopic channels enable easier access to even recessed regions of drawer units. This contributes to better use of storage spaces.

06 Stainless steel friction stay hinges keep windows and ventilators locked in position when opened. They provide extra flexibility for easier cleaning of window shutters.

07 A GI mesh is embedded along corners of walls while plastering. This prevents chipping of edges and goes a long way in keeping the walls in great shape.

08 All room doors have floor-mounted magnetic door stoppers. They hold the door in position when opened. When not in use, the stopper rests flush with the floor.

09 All door handles are in smooth brush finish steel. In addition to being beautiful, these accessories are a pleasure to use.

10 Ingeniously placed switches inside wardrobes automatically turn lights on when the door is opened and off when closed.

11 A drip irrigation system, together with sprinklers, keeps the garden lush and green.

12 The pop-up sprinkler system features a 360° spray nozzle. The throw of water can be preset to desired levels.

13 Footlights provided at convenient locations in rooms and passages show you the way at night.

14 By ensuring that the door does not ram on to the wall even when flung open, this wall-mounted magnetic door stopper provides protection to both the wall and the door handle.

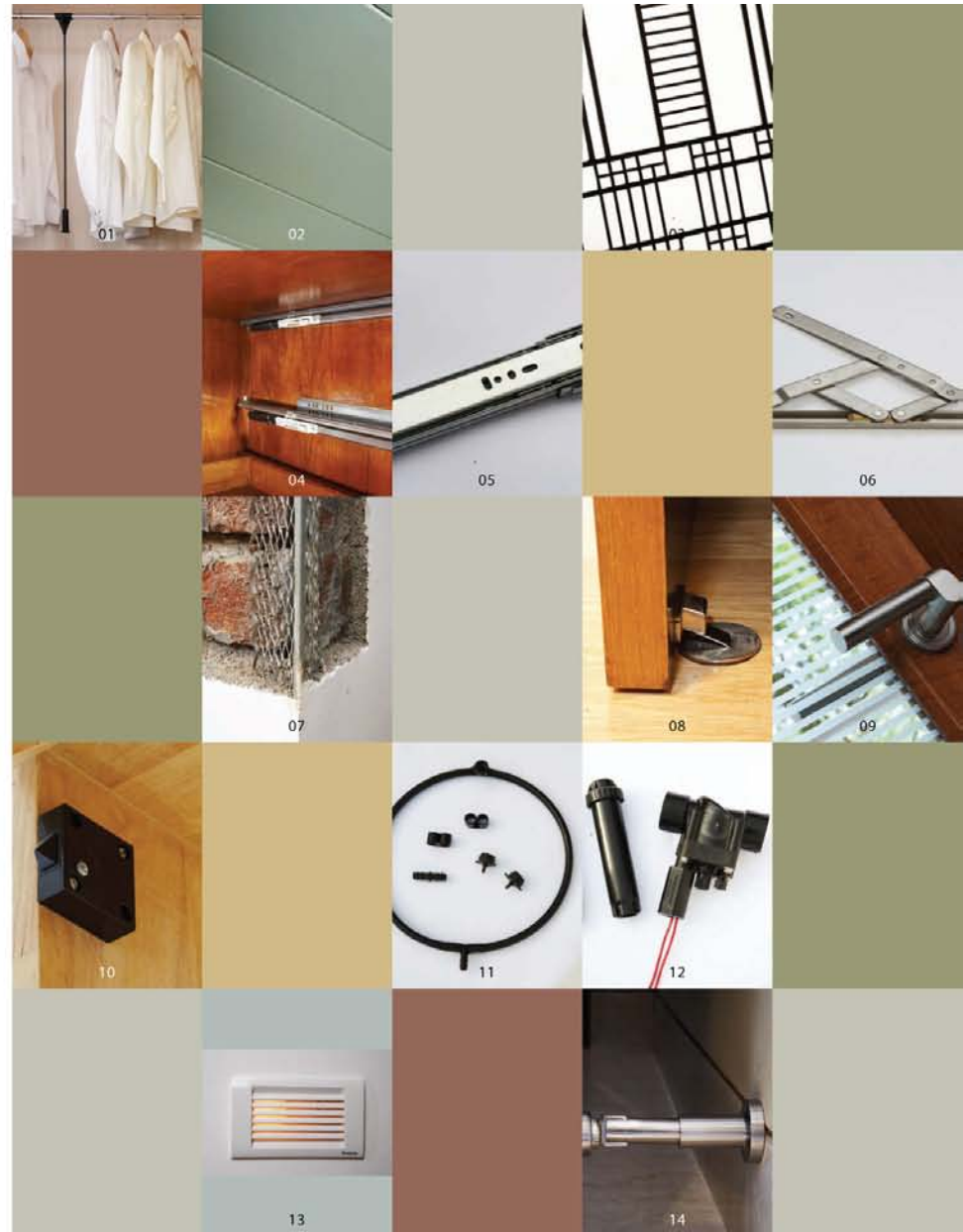
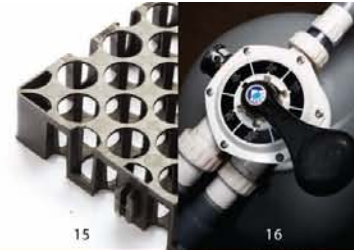




Photo: Arch of the duplex apartment at the Wodnicka Center, Warsaw, Poland



15

16



17



18



19



20



23



24



22



23



24

15 The use of PVC drainage cells enables hassle-free and efficient drainage. This is a clean alternative to using cinder as a drainage layer.

16 The filtration plant keeps the pool water crystal clear. It is not only easy to clean but also can withstand high water flow rates.

17 Concealed in-wall caterers in the master and children's bath rooms save space and result in a clutter-free look. They are also more efficient and optimize water consumption.

18 Advanced hybrid air-conditioners not only cool, but also efficiently recycle air, keeping rooms fresh at all times.

19 Our choice of materials like exposed bricks, form finished concrete and dressed stone help harmonise spaces with their surroundings. Apart from being maintenance free these materials also age beautifully with time.

20 Cantilevered steps and tempered glass create a sense of lightness and transparency about the stairway. The handrails are crafted out of high grade teak-wood.

21 An elegant and durable wooden deck in red meranti or any other natural hardwood is provided in the terrace garden.

22 The 90cm ductible electric chimney with anodized aluminium filters is perfect for Indian kitchens. It arrests fumes and keeps the kitchen fresh and odour-free.

23 The four-burner cooking hob features electric ignition for added convenience. Backing panels in stainless steel make it easy to clean.

24 Sleek cutlery drawers in non-corrosive alloys form part of the modular kitchen unit. Practical partitions add to their usefulness.

STRUCTURE

Shell
RCC frame structure with masonry partitions. The height of lower floor shall be 9'6" from slab to slab and the height of the upper floor shall vary as per the profile of the curved roof.

Masonry
High quality exposed brick masonry using specially procured high-strength terracotta wire-cut bricks and/or stone masonry shall be provided for parts of the exteriors with deepset waterproof pointing. For other parts and for the internal walls, table moulded brick masonry or Aerocon blocks or Concrete block masonry with

with 8 coats (mirror) polish.

Other Bedrooms
Kota stone laid with paper joints and finished with 8 coats (mirror) polish.

Master Bathroom
Beige coloured imported marble on the floor and walls.

Other Bathrooms
Ceramic tiles on the floor, glazed tiles on the walls upto 7' in shower area and 3' in other areas.

Wooden Deck
The Deck at the upper level shall be in Red Meranti or other natural hardwood finished with oil.

drainboard of "Franke/Niral" or equivalent make.

Cockroach Traps
A detachable stainless steel cockroach trap with lid of Chilly or equivalent make shall be provided in all bathrooms.

Bathtubs
A Standard 5' 6" long bathtub of Parryware / Woven Gold or equivalent make shall be provided in the master and children's bathroom.

Shower Cubicles
Glass doors shall be provided for the shower area in master bathroom and children's bathroom.

Overhead Showers
All hardware shall be provided in all bathrooms.

Faucets
All faucets shall be CP, heavy body metal fittings of Jaquar or equivalent make. Hot water connection shall be provided to the shower and wash basin in each bathroom and to the sink in the kitchen.

Bathroom Accessories
Towel rings, toilet paper holders, towel racks and soap dish in master, children and guest bath. - all of Jaquar or equivalent make shall be provided.

DOORS AND WINDOWS

Frames and Shutters
Door and window frames and shutters shall be in finger jointed Gluelam teak or equivalent hardwood. All door shutters shall be in solid core flush (block board) shutters provided with a natural wood veneer. All internal utility doors shall be in wood frame with etched glass (with horizontal lines). All bathroom windows, external utility fenestration,

maid's room door and window shall have aluminium frame and shutters.

Window Grills
No window grills shall be provided or permitted for the French Windows. Grills shall only be provided for those regular windows where there is a sheer drop.

Finish
The internal door shutters and frames shall be provided with a melamine matt finish while the window shutters exposed to the elements shall be provided with oil staining finished with a brush or, alternatively, with PU (Polyurethane) finish.

Hardware
All hardware shall be in brush finished stainless steel. The main door shall be provided with a night latch of Godrej or equivalent make. All other doors will be provided with door bolts and a mortise lock or tubular / cylindrical lock.

Friction Stays
All operable windows shall be fitted with friction stays allowing the windows to stay open in any position.

Door Stoppers
Magnetic / concealed door stoppers shall be provided for the main door and bedroom doors.

ELECTRICAL

Wiring
All wiring shall be of Havells or equivalent make, concealed in 19mm dia, 2mm thick PVC conduit pipes.

Switches
All switches shall be of Crabtree or equivalent make. Apart from the basic light and fan controls, the following number of sockets

shall be provided in various rooms:

Living / Dining 4 nos - 5 amp switch & socket.
Kitchen 4 nos - 5 amp switch & socket, 5 nos - 15 amp switch and socket.

Utility/Wet kitchen 2 nos -5 amp switch & socket, 5 nos-15 amp switch and socket.
Master Bedroom 4 nos - 5 amp switch & socket.
Children's Bedroom 4 nos - 5 amp switch & socket.
Guest Bedroom 2 nos - 5 amp switch & socket.
Bathrooms 1 no - 5 amp switch & socket.

Family 2 nos - 5 amp switch & socket, 1 no - 15 amp switch and socket.
Maid's room 2 nos - 5 amp switch & socket.

One telephone point each shall be provided in living and master bedroom.

Internet connection to individual units shall be through a service provider.

PAINT

All internal paint in Acrylic Distemper. No external paint shall be provided over exposed brick or stone masonry. For other areas, either cement based paint of Snowcem make shall be used in ducts / basements etc. and Surfatek Matt or equivalent in areas visible in the elevation. Special textured paint may be used in certain areas. Any steel railings etc. shall be provided with a zinc-chromate primer and synthetic enamel paint.

ELECTRO-DOMESTIC EQUIPMENT

Hob
A 4-burner cooking hob with electrical ignition and an SS

backing plate shall be provided in the kitchen as well as in the wet kitchen.

Chimney
A 90cm ductible electric chimney shall be provided in the kitchen.

Dishwasher
A dishwasher of Ariston or equivalent make shall be provided in the kitchen.

Geyser
25 liter geysers of Racold or equivalent make shall be provided in the bathrooms and wet kitchen/utility.

Solar water heater
A domestic solar water heating system of adequate capacity shall be provided in each unit.

CABINETS AND FURNITURE

Kitchen
Floor & wall mounted cabinets complete with cutlery tray, vegetable baskets, breakfast counter etc. of Veneta Cucine or equivalent make shall be provided in the main kitchen and of Vesta or equivalent make in the wet kitchen.

Master Bedroom
Double bed with bedside tables, study unit, 5 module walk-in wardrobe.

Master Bathroom
Mirror or with backing ply and edge trim, linen storage cabinet.

Children's Bedroom
2 single beds with bedside table, study unit, 4 module walk in wardrobe.

Maid's Room
Single cot, 1 module wardrobe.

Guest Bedroom
Double bed with bedside tables, 2 module wardrobes, TV unit.

All other Bathrooms
Mirror or with backing ply and edge trim.

Family
TV unit, audio storage cum library unit.

Basic Materials
All woodwork except for modular units shall be in termite resistant good quality plywood or MDF panels and natural veneer or laminate. Modular units shall be in particle board and veneer or laminate.

Hardware
All hardware shall be in brush finished stainless steel.

Finishing
Natural veneer exteriors shall be finished in melamine matt finish and the interiors in varnish or paint / laminate.

Size of 1 module unit for wardrobe is 1100mm width x 2100mm height.

Size of 1 module unit for walk in wardrobe is 1100mm width by 2300mm height.

HVAC

Air-conditioning
A hybrid central air-conditioning system shall be provided with blower units in the bedrooms, family space and living/dining area of each unit.

UTILITIES / SERVICES

Back-up Power
Back-up power shall be provided to the entire unit upto a limit of 10 KVA per unit and also to the common area lighting and pumps and motors etc. The Generators shall be provided with acoustic enclosures and an automatic change-over switch.

Sewage Treatment
A sewage treatment plant shall be provided with separate plumbing for the use of re-cycled water in landscaping and for the flushing system.

FACILITIES AND AMENITIES

Club House
Club house with a common space for parties / functions.

Swimming Pool
A 4' deep swimming pool with a separate paddle pool for kids.

Gym
Commercial low-impact Treadmill, Total body elliptical fitness Crosstrainer, Upright cycle, 4 station Multi-gym, Flat incline, decline Multipurpose Bench, dumbbells.

Sporting facilities
Tennis Court, Badminton, Squash.

LANDSCAPING

Soil
Good quality red soil and sand mixture with manure shall serve as the base layer for landscaping.

Irrigation
Sprinklers and a drip irrigation system shall be provided for landscaped areas.

Soft Landscaping
Grass, shrubs and bamboo etc. and simple plants shall be provided in the individual terrace gardens.

Water body
A 8' wide shallow water body (not for swimming) including a filtration unit, shall be provided along the width of the garden and provided with 2 nos. underwater lights.

THE SPECIFICATIONS from structure to landscaping

plaster shall be provided.

FLOORING AND TILING

Living, Dining and Family
Beige coloured imported marble laid with paper joints and finished with 8 coats (mirror) polish.

Kitchen
Beige coloured imported marble laid with paper joints and finished with 8 coats (mirror) polish. Glazed tiles above the counter upto a height of 2'.

Utility / Wet kitchen
Udaipur Green Marble to mirror or finish. Glazed tiles above the counter upto a height of 2'.

Master Bedroom
Beige coloured imported marble laid with paper joints and finished

SANITARY AND PLUMBING

Water Closets
Western style, porcelain EWC of Parryware or equivalent make shall be provided in all bathrooms.

Health Faucets
Health faucets of Jaquar or equivalent make shall be provided in all bathrooms.

Wash Basins
Porcelain wash basins of Parryware or equivalent make shall be provided in all bathrooms. All basins shall be provided with a 32mm CP waste coupling & CP bottle trap of standard make.

Kitchen Sink
Stainless steel sink with



WE MAINTAIN from general upkeep to carpentry

OUR MAINTENANCE PROMISE

General upkeep
24 Hour security
Garbage clearance
Housekeeping
Landscaping
Mailing service
Routine maintenance
Water supply

Maintenance Services
Access-control
Backup power
Fire safety
Lighting
Sewage treatment
Water pumps

Our commitment to clients extends well beyond the handing-over of a home. By providing a wide-ranging one year warranty, we take responsibility for quality. For The Meadow Dance, we offer a comprehensive package of maintenance services that ensure competent and timely care for your home for a period of approximately ten years. Our focus on preventive maintenance is cost-effective and prudent as it brings down the need for repairs, extends life expectancy of components and reduces consumption of energy.

Housekeeping

As part of our housekeeping services, we take care of garbage clearance and disposal. Meticulous attention is paid to general cleanliness and upkeep of the premises. This includes ensuring proper drainage in terrace and basement areas, pump rooms, driveways, water bodies and reservoirs, and other common spaces including corridors.

We also ensure regular water supply to all homes. In the event of regular supplies being disrupted, we make efforts to arrange water from alternate sources.

Security

Teams of well-trained security personnel, either employed directly by us, or engaged through professional security agencies, provide round-the-clock security. We also provide backup for all surveillance and access-control devices.

Equipment

Comprehensive maintenance contracts with vendors of generators and pumps ensure timely service and backup for critical equipment.

Amenities

The maintenance plan includes upkeep of all recreational spaces and amenities including the pool, gymnasium and play area.

Conveniences






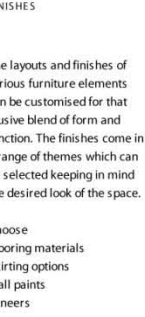

Maintenance of conveniences like sewage treatment plant, backup power supply, lighting-control, access-control and access roads fall within the plan. It also includes care of common landscaped areas.

Costs

A non-refundable fee is collected from every homeowner at the time of purchase towards subscription for the maintenance plan. A notional interest is paid on this amount every year. This fund is expected to deplete at the end of approximately ten years.

Choose with eBUILD

eBUILD is a proprietary online platform that helps homeowners customize their new home, from anywhere with internet access, choosing from a wide range of high quality home designs. eBUILD provides visuals for each option, real-time information on costs, and the ability to create multiple versions before selecting an option. eBUILD's integrated design solutions starts with the overall make-up of rooms that define the home, then the design of the interiors within each room, and finally design of individual items that make up each interior option. See below for further details.

WALLING	ELECTRICAL LAYOUT	CABINERY	FIXTURES	FINISHES	SMART HOME	LANDSCAPING
 <p>Choose appropriate wall locations to best suit your space requirements. Within the same shell create a home with large open spaces and few private rooms or many private rooms and fewer social spaces.</p> <p>Choose</p> <ul style="list-style-type: none"> › Number of rooms › Room sizes and layouts › Furniture layouts › Positions of doors etc. 	 <p>Define locations to switch on/off your electrical items. Change configurations from 1 way to 2 way.</p> <p>Choose</p> <ul style="list-style-type: none"> › Add / remove points for lights › Power outlets › Phones › Internet › Two-way controls 	 <p>Customise the External Design Theme, Interior Shelving, and Finishes of your bedroom, kitchen and other furniture for that perfect blend of form and function.</p> <p>Choose</p> <ul style="list-style-type: none"> › Wardrobes › Walk-in closets › Dresser units › Study units 	 <p>Choose across well co-ordinated designer and other sets of plumbing and sanitary items, to meet satisfy tastes, key functional requirements and budgets.</p> <p>Choose</p> <ul style="list-style-type: none"> › Sanitary fittings › Plumbing fittings 	 <p>The layouts and finishes of various furniture elements can be customised for that elusive blend of form and function. The finishes come in a range of themes which can be selected keeping in mind the desired look of the space.</p> <p>Choose</p> <ul style="list-style-type: none"> › Flooring materials › Skirting options › Wall paints › Veneers 	 <p>Configure smart home functions to make interactions within your home a seamless and pleasurable experience.</p> <p>Choose</p> <ul style="list-style-type: none"> › Curtain controls › Additional sub-phones › Bathroom phones › Mood lighting › Extra IP cameras 	 <p>Customise your garden in a myriad different ways.</p> <p>Choose</p> <ul style="list-style-type: none"> › Soft or hard landscaping › Simple / elaborate detailing › Bird baths › Lily ponds › Exotic flora
