

**natura**

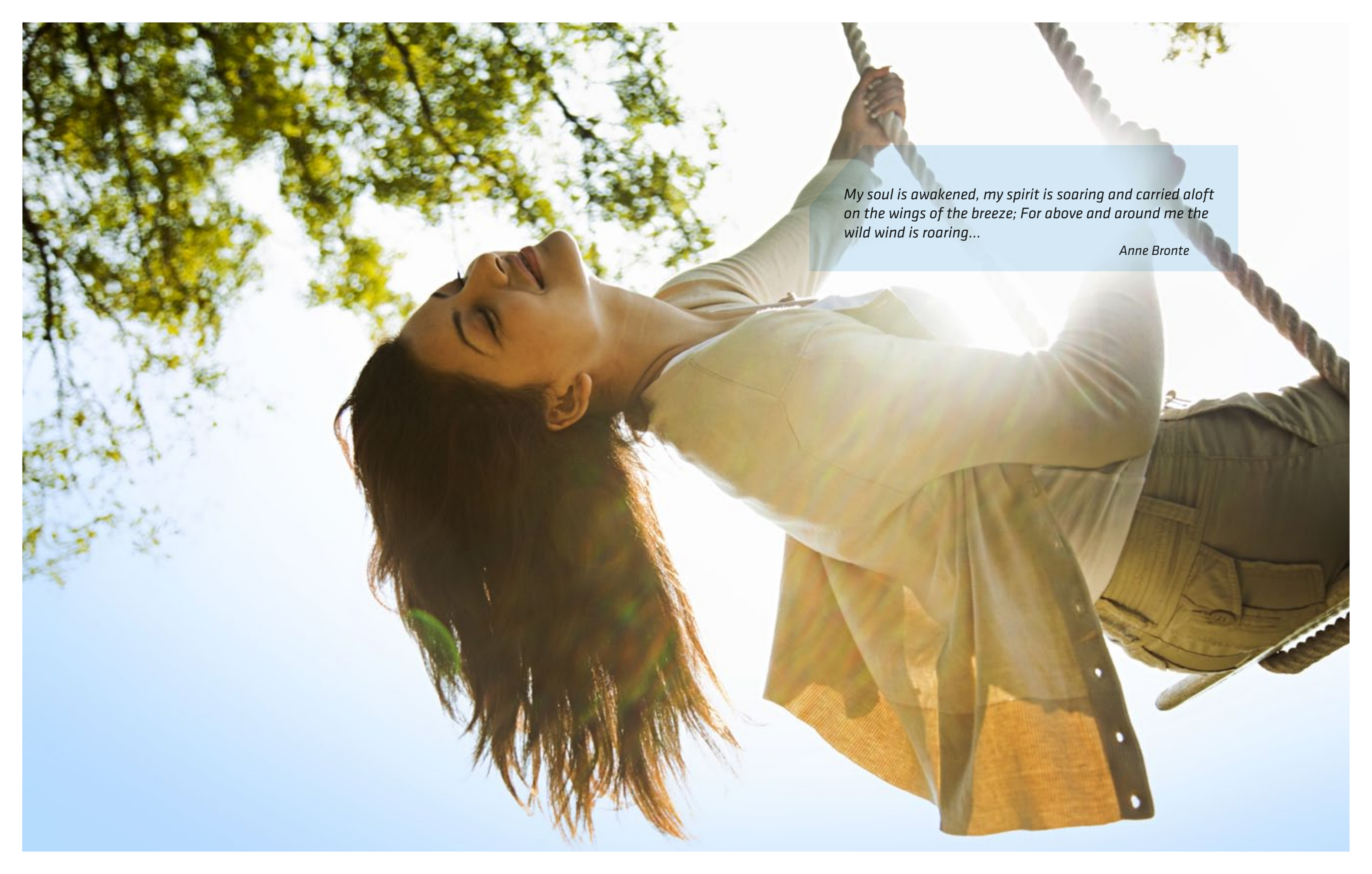




*Recharge your aura*

# LET NATAURA IN

The word 'aura' in Greek means 'a soft breeze'. In Nat'aura, we bring nature's soft breeze back into your home. Through the environment you live in and the people you live around, we help reenergize your aura. Our focus is to create for you an atmosphere that elevates your mood, personality, health, emotional and spiritual well-being. Join us on a journey into the Nat'aura way of life.



*My soul is awakened, my spirit is soaring and carried aloft  
on the wings of the breeze; For above and around me the  
wild wind is roaring...*

*Anne Bronte*



# THE NATAURA WAY OF LIFE

*Natura Homes celebrate nature and all the possibilities it offers to rejuvenate your life on a deeper level, everyday.*

Nestled within 3.6 acres of landscaped gardens and water bodies, the Natura Homes is designed around the natural flow of breeze through indoor and outdoor spaces. State-of-the-art technology and best-in-class amenities serve only to harness nature's abundance to create an atmosphere of peace and comfort. The wind, light, rain and sun is invited into your home when you can enjoy it most and kept out when harsh.

Natura offers you the healing power of soft breeze, all through the year. In summer, the breezes are channelled through living areas, replacing the need for stuffy air conditioners. During the monsoons, watch the calming influence of rain as it lashes your large windows, refreshes your garden and replenishes the earth. As the mild winter approaches, our skylights warm your home just enough for you to soak in the season's best.

*Nature is not a  
place to visit.  
It is home.*

*Gary Snyder*

*Look deep into nature,  
and then you will  
understand  
everything better.*

~Albert Einstein



# ADDRESS, THE HEART OF NATURE

*Our premium location positions you at the cusp of urban living and a more nature-friendly way of life.*

When it comes to location, Nataura Homes scores a perfect 10. Situated on Sarjapur Road, 10 kms from Outer Ring Road, Nataura shelters you from the noise, traffic and congestion, surrounding your home with calming water bodies and landscaped gardens.

Residents of Central Bangalore are forced to commute all the way here for the best international schools, top-of-the-line shopping experiences and international standard sports academies. You, however, are already where it's at. Right in the heart of nature. Our premium location positions you at the cusp of urban living and a more nature-friendly way of life.

/ LOCATION /



## Connectivity

### TECH PARKS & IT CORRIDOR

- WHITEFIELD - 9KMS
- OUTER RING ROAD - 10KMS
- ELECTRONIC CITY - 12KMS

### SHOPPING MALLS

- FORUM VALUE MALL - 9 KMS
- TOTAL MALL - 9KMS
- SPENCERS - 9KMS

### SCHOOLS

- TISB - 1KM
- OAKRIDGE INTERNATIONAL - 1km
- GREENWOOD HIGH - 2km
- INVENTURE ACADEMY - 2km
- GLOBAL INTERNATIONAL - 3km
- DELHI PUBLIC SCHOOL - 5km
- INDUS INTERNATIONAL - 7km
- PRAKRIYA, PRIMUS, GEAR - 8kms



# ENERGISED LIFE SPACES

*Our layout has been designed to embrace nature without compromising privacy and individuality.*

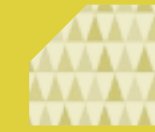
**Features**

3.6 ACRES

IGBC GOLD STANDARD

Project registered with IGBC for LEED Gold certification

**Blocks**



**4 BHK EAST**  
1-6, 13-18, 23-26, 31-33



**3BHK WEST**  
7-12, 19-22, 27-30, 34-36



**4BHK NORTH**  
37-47

**Features**

- LANDSCAPED GARDENS
- PRIVATE GARDENS
- LANDSCAPED TERRACES
- VISITOR PARKING

- CLUB HOUSE
- GYMNASIUM
- SWIMMING POOL
- BADMINTON & TENNIS COURT

- BASKETBALL RING
- TABLE TENNIS
- AMPHITHEATRE
- KIDS PLAY AREA





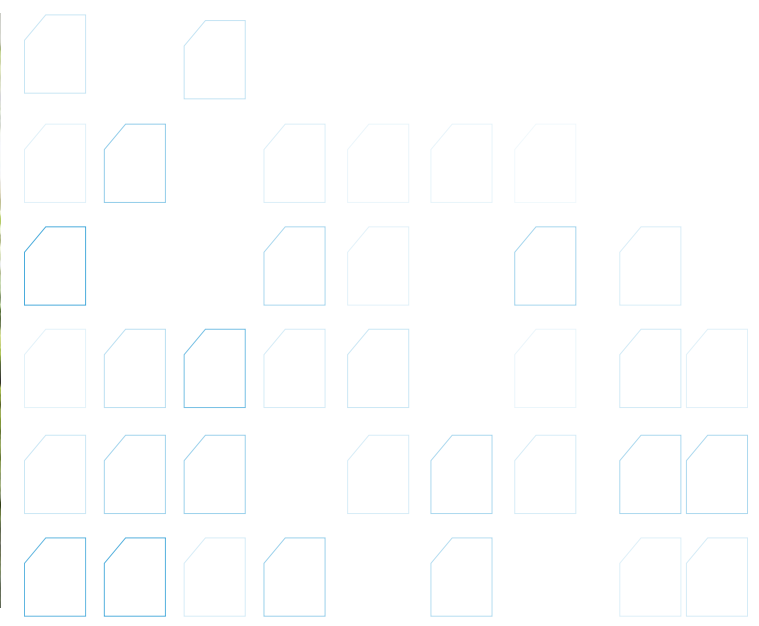
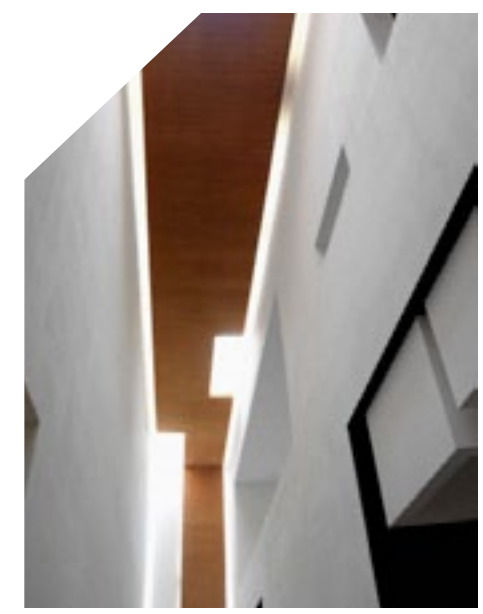
# THE AURA THAT SURROUNDS

*Natura Homes reflect a deep understanding of eco housing and sustainable living principles.*

Our stunning modern exterior designs are environmentally friendly and take advantage of what the nature has to offer. We have extensively researched local weather conditions, conducted scientific studies on airflow and heat distribution patterns in houses. Based on our unique findings, we have developed methodologies to control the flow of heat and light, so making your home cool in the summer and warm in the cooler months. We have also put in place appropriate technology to harness natural resources like sun and rain.

## OUR ECO DESIGN FEATURES

- Breezeways and natural convection
- Open design for flow-through ventilation. All windows, doors positioned to allow maximum light, reduce heat, and maximize airflow
- Well-orientated skylights/courtyards to enable more natural light into the house, thereby eliminating the use of any artificial light during the day
- A private courtyard that creates permeable spaces to suit Bangalore's moderate climate
- Low impact housing footprint
- Adjustable shading devices and wide eaves for solar protection
- Inclusion of solar heating, water tanks and grey water re-cycling systems
- Inclusion of light coloured surfaces, particularly roofs
- Landscaped terraces to avoid heat island effect, making the homes cooler
- Topsoil is conserved and reused in the project for landscapes







*I go to nature to be  
soothed and healed,  
and to have my senses  
put in order.*

*- John Burroughs*

/ INTERIORS /



# THE AURA WITHIN


*Modern and efficient interiors that exude the warmth  
and beauty of its environment.*

At Nataura, we are focused on optimally using natural materials and resources, with energy efficiency and water conservation at the very heart of our design philosophy. What that means to you is a subtle blend of indoor and outdoor living. A home that remains cool in the summer and warm in the winter. A green construction that draws natural light in, keeps harsh heat out.

## IN-HOUSE FEATURES

- Double Height living/dining rooms
- Large Bedrooms with wardrobe spaces
- Large Open Kitchens
- Well appointed bath suites
- Double heights in living & dining creates expansive spaces
- Internal gardens let you enjoy the outdoors with utmost privacy
- Adaptability & accessibility for aging/less mobile residents (optional)





*Man is most nearly himself when he achieves the  
seriousness of a child at play.*

*Heraclitus*

# LIVE LIKE YOU PLAY

*Thoughtfully designed public facilities with modern amenities to complement and complete the Nataura experience.*

To relax, unwind and recharge mind and body, we have provided large, well ventilated and appropriately equipped spaces for recreation. From sporting areas, to places where you can meet, we've meticulously planned to make your life outside the home, fun, fulfilling and secure.

Play areas have been designed with particular care. All equipment is checked for safety and laid out in such a way that children can spend hours playing together in a protected environment



- LANDSCAPED GARDENS
- PRIVATE GARDENS
- LANDSCAPED TERRACES
- VISITOR PARKING
- CLUB HOUSE
- GYM
- SWIMMING POOL WITH TODDLER POOL
- TENNIS COURT
- BASKETBALL RING
- BADMINTON COURT
- TABLE TENNIS
- AMPHITHEATRE
- KIDS PLAY AREA WITH SAFETY EQUIPMENT



*We do not inherit the earth from our ancestors,  
we borrow it from our children.*

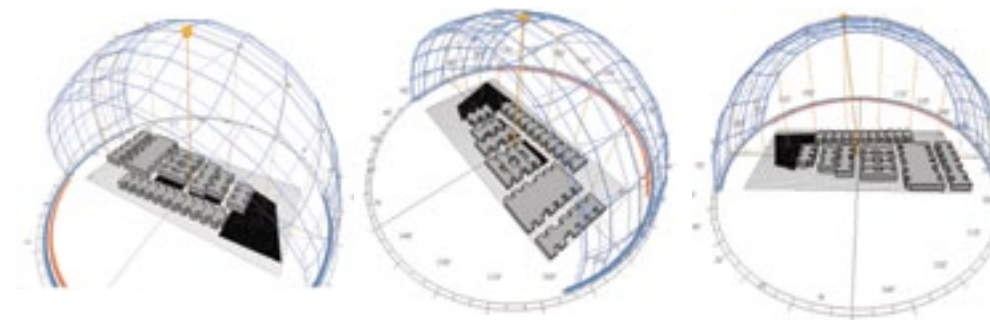
*- Native American Proverb*





# INFORMED LIVING

*Architecture that is uniquely informed by its place, subject and environmental ideals.*



*(Detail analysis of the Sun's Path for to plan and optimize natural cooling.*

## WATER CONSERVATION & MANAGEMENT

With our growing population, depleting ground water and unpredictable climate, conserving water will be given the highest priority.

- Water is saved, reused and recycled
- Harvested rainwater is treated and reused
- All homes will be installed with water efficient fixtures
- Treated grey water will be used for landscaping and flushing
- Drought tolerant species of plants will be used in landscaping

## ENERGY EFFICIENCY

It is no doubt essential to use high-efficiency appliances, heating and cooling equipment and water heaters. But green design also includes efficient ventilation throughout the house, optimum placing of windows that take advantage of sun and shade, planting of shade trees, usage of skylights in interior rooms.

- CFC free and energy star rated Appliances
- Solar water heaters
- Efficient Lighting equipment with optimum power density
- Spaces with maximum daylight, optimum luminosity
- Rooms have excellent cross ventilation

## ECO CONSCIOUS MATERIALS

- Preference will be given to locally sourced materials
- All paints, polishes will have low VOC's
- Reduce usage of energy consuming materials
- Waste segregation-plan and process will be implemented





# SPECIFICATIONS

## FRAMED STRUCTURE

EXTERIOR WALLS	RCC Framed Structure, Solid Block Masonry of 8" Thick for Walls
INTERIOR WALLS	6" thick

## PLASTERING

INTERNAL WALLS	Smooth plaster finish and emulsion paint.
EXTERNAL	Walls – Water proof plaster and exterior grade emulsion. Enamel painting for grills.

## WOODWORK

MAIN DOORS	Teak Wood Frame with Wood Panel/Designer Shutter Door.
INTERNAL DOORS	Seasoned Hardwood Frame with Flush Door shutters.
FRENCH DOORS	3 Track UPVC with clear glass and mosquito mesh.
WINDOWS	UPVC with clear glass and mosquito mesh.
GRILLS	MS Grills with enamel paint

## PAINTING

EXTERNAL	Exterior Grade Emulsion
INTERNAL	Emulsion

## FLOORING

LIVING ROOM & BEDROOMS	Laminated Wooden Flooring
FAMILY KITCHEN & DINING	Premium Marble or Imported Tile Flooring
BATHROOMS	Ceramic Tiles up to wall height
KITCHEN	Granite Counter with tiles up to 3' Height from the Plat form
BALCONIES & TERRACE	Terracota or other exterior grade tiles with a rough texture finish

## CP FITTINGS

Premium quality CP Fittings of TOTO/ Jaquar/equivalent make

## PLUMBING

Premium quality fittings, PVC pipes for drainage and storm water drains

## ELECTRICAL

Wires, Boards & Panels	Premium quality wires of Finolex/Havells/ equivalent make.
Switches	MCB, Panel boxes will be of Havells/Equivalent make. Legrand/Panasonic or Equivalent make
	Provision for AC in Living Room and Bedrooms

## TELECOM

Telecom plugin points will be provided in all rooms. Intercom will be provided to all villas

## GENERATOR

Generator power backup will be provided to all villas and common areas

## SECURITY

2 Tier Security with Intercom videophone will be provided.

## CABLE TV

Cable TV points will be provided in all rooms





# WINNING TEAM

*Creating sustainable projects that enhances the quality of life of people who work and live in them.*

Established in 2010, Aditi Projects is the inspiration of a team of engineers who share a passion to create sustainable developments in South India. By investing in innovative design and technology, Aditi Projects is focused on reducing the energy footprint of every development. Keeping nature and all things natural as a touchstone, Aditi constructions are founded on integrity, safety and good design.

## COMPLETED PROJECTS

**DEGA ENCLAVE**

## PROJECTS UNDER CONSTRUCTION

**ADITI TROPICA | ADITI WORKS | HI-LIFE**

## BUILDERS/ DEVELOPERS

**BSR INFRA**

**ADITI PROJECTS**

## ARCHITECTS

**ARCHITECTURE PARADIGM**

## STRUCTURAL & MEP CONSULTANTS

**SHRADDHA**

## PROJECTS TO BE LAUNCHED

**NATURA**

## LANDSCAPE

**DHRUVA ASSOCIATES**

## SUSTAINABILITY CONSULTANT

**MINDWAGON**



# LAYOUT PLAN

**3006**  
SQFT

# 4 BHK NORTH FACING

## GROUND FLOOR



## FIRST FLOOR



## MEZZANINE



## TERRACE



**3013**  
SQFT

**4 BHK EAST FACING**

**GROUND FLOOR**



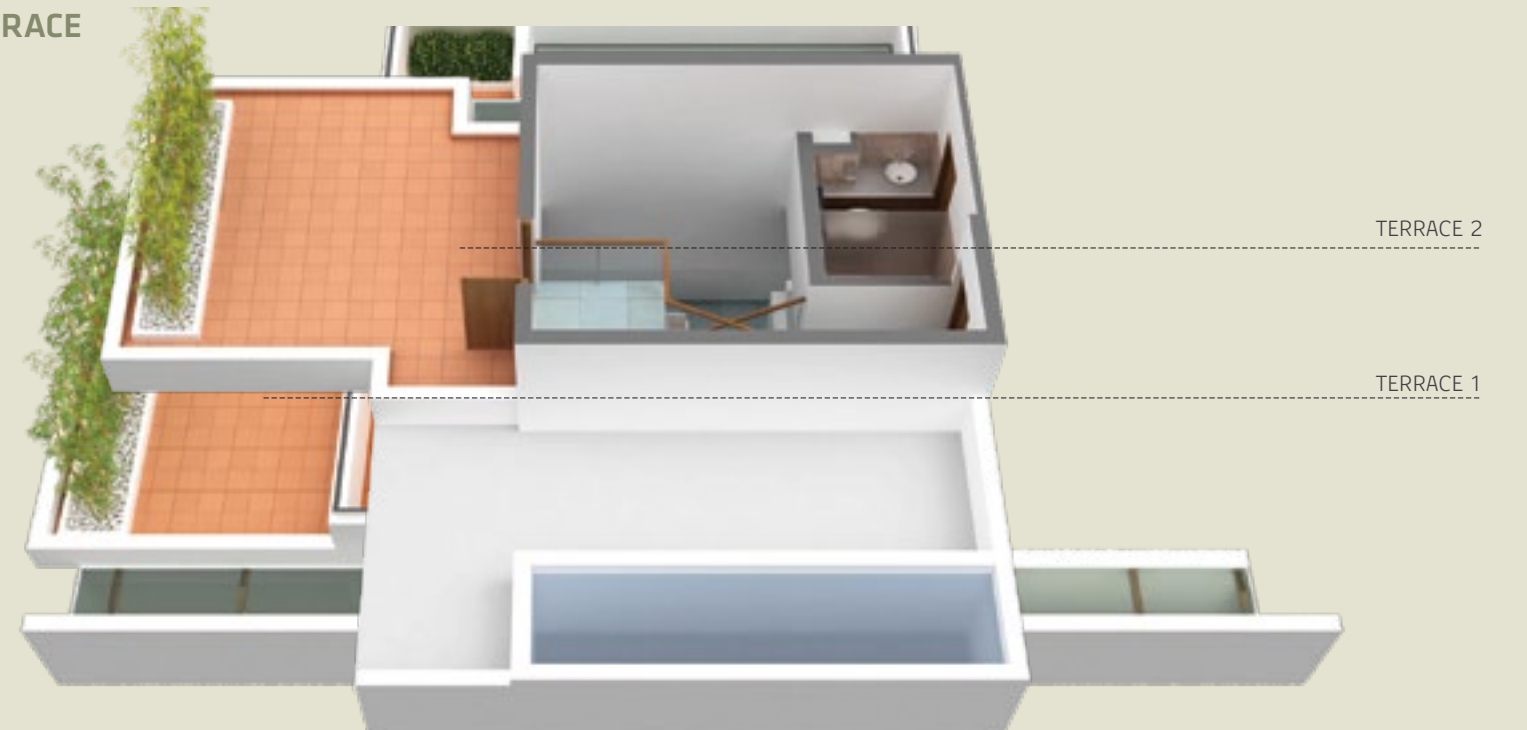
**FIRST FLOOR**



**MEZZANINE**



**TERRACE**



**2355**  
SQFT

# 3 BHK WEST FACING

## GROUND FLOOR



- FOYER 3'5 X 5'
- DECK 4'1 X 6'4
- PARKING
- LIVING 15'6 X 12'1
- DECK 2'9 X 12'1
- LANDSCAPE
- DINING 12'3 X 11'3
- KITCHEN 10' X 14'8
- UTILITY 4'10 X 14'8

## FIRST FLOOR



- BALCONY 5'5 X 7'5
- BEDROOM 13'8 X 13'10
- TOILET 5'5 X 8'3
- FAMILY 13'6 X 12'1
- BALCONY 4'7 X 12'1
- TERRACE

## MEZZANINE



- TOILET 5'6 X 8'6
- BEDROOM 17'11 X 11'6
- TOILET 5'5 X 8'3
- BEDROOM 10'1 X 14'8

## TERRACE



- TERRACE 2
- TERRACE 1



**BUILDERS/ DEVELOPERS**

BSR INFRA  
ADITI PROJECTS

**ARCHITECTS**

ARCHITECTURE PARADIGM

**STRUCTURAL & MEP CONSULTANTS**

SHRADDHA

**LANDSCAPE**

DHRUVA ASSOCIATES

**SUSTAINABILITY CONSULTANT**

MINDWAGON

**NATAURA**

Sy number 97, Chambenahalli village  
Dommasandra Cross, Sarjapur Road  
Bangalore Rural District

[www.nataura.in](http://www.nataura.in)

[e sales@nataura.in](mailto:sales@nataura.in)

[t +91 77609 63831/32/33](tel:+9177609638313233)

Disclaimer: This brochure is purely conceptual and does not constitute a legal document/offering. Visual representations have been made and are not to be taken as representations of fact, and do not form part of an offer or contract. The management of Nataura Projects reserve the right to add, delete, modify or alter any specifications mentioned here.