

# KOHINOOR *Park...*



Experience the good life, Lavish your home tastefully furnished to suit your taste.







*Designed with...  
Lifestyle in mind.*

 **KOHINOOR**  
*Park...*

Life is a precious collection of memorable and cherished moments. Moments that enthrall you with variety, dazzle you with their brilliance, touch you with their freshness and fill you with spirited emotions

**Kohinoor Park** is located in the fast developing elite neighborhood at Bommuru. Experience the masterly utilization of living space with unique architectural details. When you choose your dream flat at **Kohinoor Park** that is a perfect match for your needs, you are assured of a better quality of life.

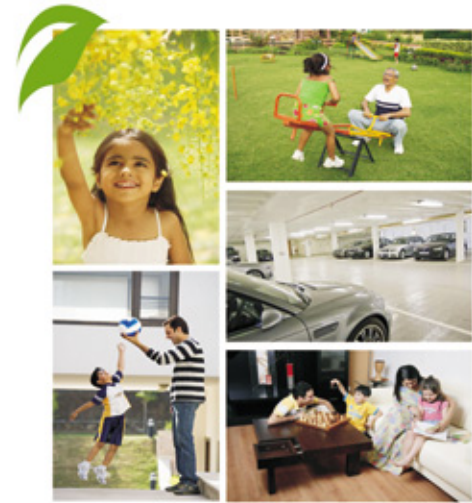
**Key-plan...**





## Highlights ...

- Exactly 2 Km to Rly. Station rear entrance.
- Easy accessibility to Rly. Station front entrance via Flyover.
- Less than 0.5 Km from NH-5.
- Walkable distance to educational institutions.
- Bus complex 3 Km's from site.
- Only 160 apartments in a 3.3 Acre DTCP approved layout with great lung space, Layout has separate park and walkway will be developed.
- The complex is approved by RJD, Rajamundry and Director, Town & country planning , Hyderabad.....
- All flats are independent with out common walls & each separated by at least 6'6".



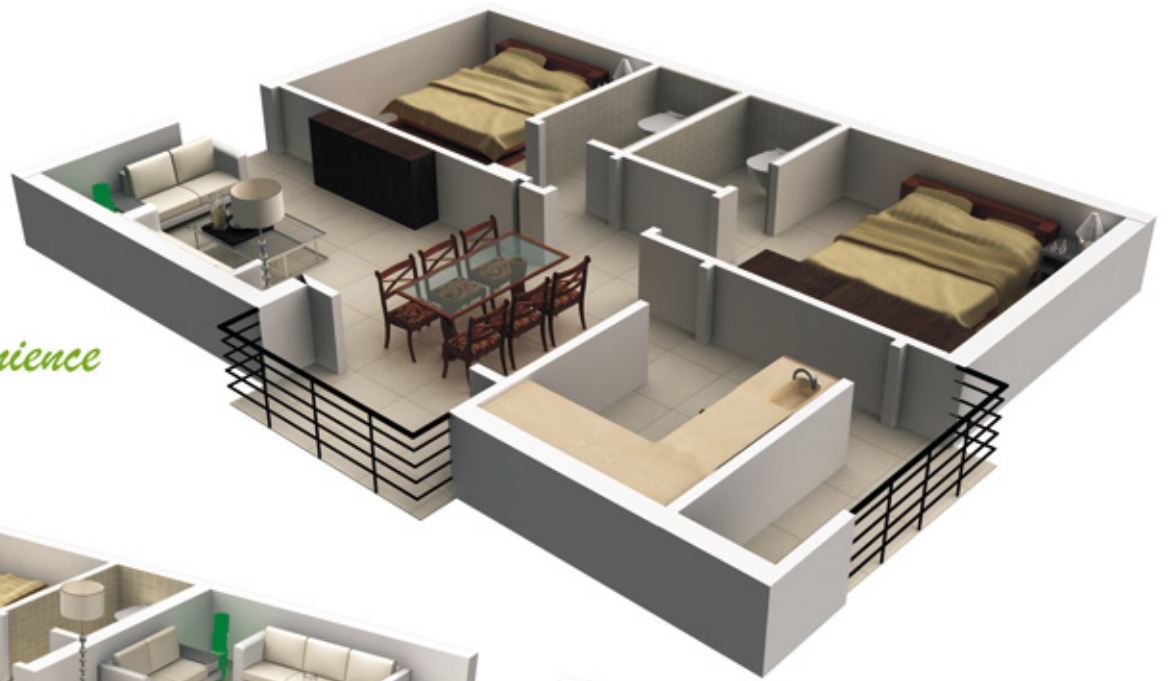






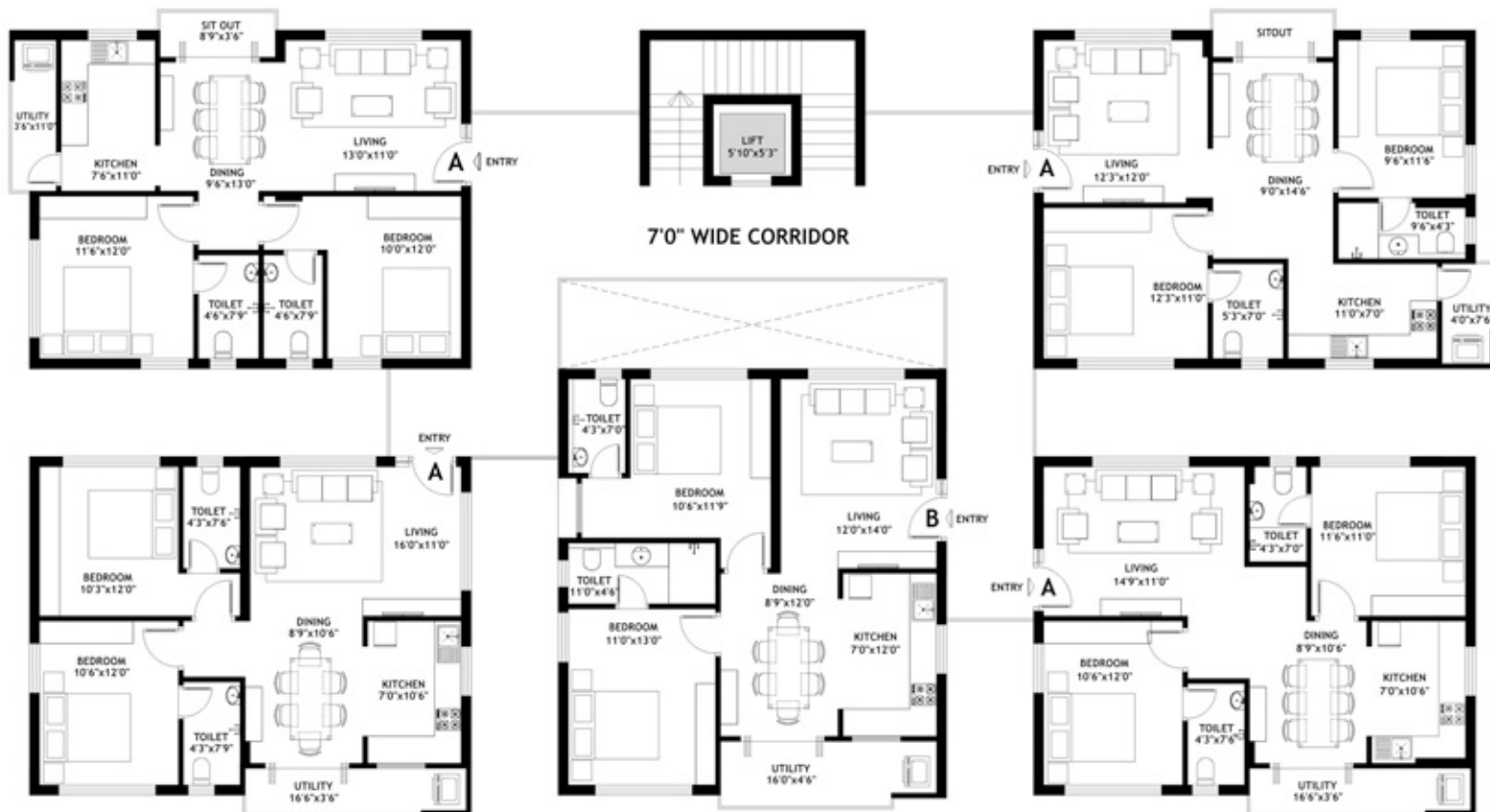
## 3D Floor plans ...

*Where you experience  
both comfort and convenience*



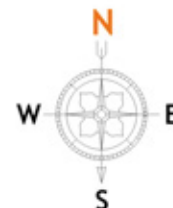


**Block - A1 ...**



**Area Statement**

A Flat	1035 Sft.
B Flat	1145 Sft.



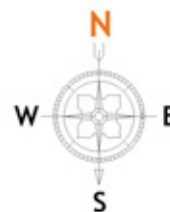


**Block - A2 ...**



**Area Statement**

A Flat	1035 Sft.
B Flat	1145 Sft.

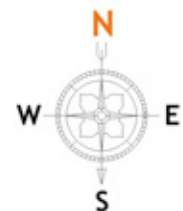




**Block - B1 ...**



Area Statement	
C Flat	1445 Sft.
D Flat	1165 Sft.
E Flat	1045 Sft.



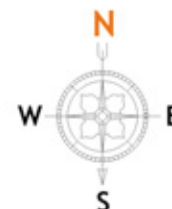


# Block - B2



## Area Statement

F Flat	1035 Sft.
G Flat	930 Sft.





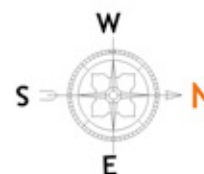
**Block - C ...**



Area Statement

H Flat

1225 Sft.





## Specifications ...



### FRAMED STRUCTURE

R.C.C. Framed structure to withstand wind & seismic loads.



### SUPER STRUCTURE

First class brick masonry in cement mortar.



### PLASTERING

Internal : Double coat cement plaster with smooth finish.

External : Double coat sand faced cement plastering.



### DOORS & WINDOWS

Main Doors : Teak wood frames and flush door shutters with teak/ply teak veneer, and designer hardware of reputed make.

Internal Doors : Country wood frames and flush door shutters and standard hardware.

Windows : Country wood frames fitted with float glass and hardware of reputed make.



### PAINTING

External : Premium paint.

Internal : Premier emulsion paint with roller finishing for both walls and ceilings.



### FLOORING

Living / Drawing / Bed room : Vitrified tiles of 2'X2' with 4" skirting.

Bathrooms : Acid resistant Anti skid designer ceramic tiles.

Kitchen : 2'X2' vitrified tiles. Utility : Anti skid ceramic tiles.



### CLADDING & DADOING

Dadoing up to 61/2' height in toilets. Designer tiles up to 2'0" height above kitchen platform. Granite platform with S.S sink for kitchen.



### COMMUNICATION

Cable T.V, Telephone points will be provided.



### ELECTRICAL & COMMUNICATIONS WORKS

Electrical : Concealed copper wiring in conduits of standard make for light, fan and power plug points wherever necessary.

a. Power outlets for air conditioning in master bedroom.

b. Power plugs for refrigerator, micro waveoven, mixer / grinder in kitchen.

c. Plug points for T.V Audio systems, etc., Wherever necessary.

d. 3 phase supply for each unit and individual meter boards.

e. Miniature circuit breakers (MCB) & ECLB for each distribution board.

f. All electrical fittings of reputed make.



### POWER BACK UP

Back up power through generators.



### LIFTS

6 passenger lifts of Kone brand / equivalent.



### WATER SUPPLY, SANITARY & PLUMBING WORKS

Water supply : ISI mark GI / PPR piping executed by professional plumbers.



### TOILETS

All toilets will consist of

a. EWC with flush tank of reputed make.

b. Hot and cold water mixer with shower of reputed make in master bedroom.

c. All C.P. Fitting of standard make.



### DRAINAGE

ISI make PVC equivalent sanitary piping. All pumps of equivalent make.



### NOTE

Brands mentioned in this leaflet are indicated only. The developed reserves the right to use Indian/imported material of equivalent quality. All details are subject to change and all optional other than stated specifications are at extra cost.



### Builders

#### **NARAYANA & RAO Constructions**



201, Vijayveer Residency,  
Shyam Karan road,  
Ameerpet, Hyderabad - 500016

### Contact

Ph : 98497 91159 - Rama Krishna,  
98481 86118 -  
Email : snkakarla@yahoo.com,  
gsvrkraj@gmail.com.

### Architects

#### **RAJASEKHAR M.**

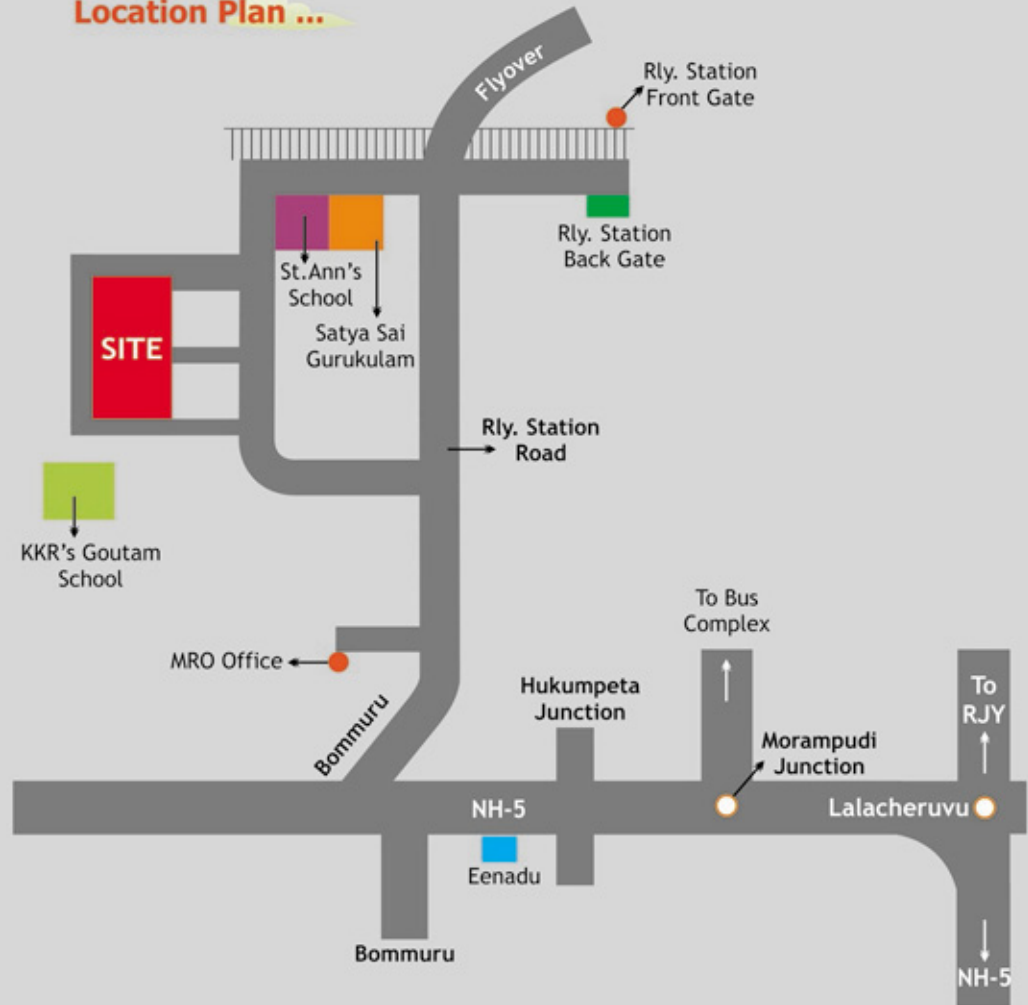
DESIGN CONCEPTS  
Architecture & Interior,  
Srinagar, Kakinada.  
Ph no : 2387979.

### Structural Engineer

#### **K.KAMESHWAR RAO**

Visakhapatnam.

### **Location Plan ...**



Note : This brochure is only a conceptual presentation of the project and not a legal offering. The Promoters reserve the right to alter and make changes in elevation, specifications and plans as deemed fit.