



APEX  
**THE KREMLIN**  
LUXURY REDEFINED  
2/3 BHK Apartments



Presents



APEX  
**THE KREMLIN**

LUXURY REDEFINED

2/3 BHK Apartments

\* All facts and figures are only depictive in nature and end product may differ and these should not be held as a promise.

# About Apex Group

*Apex Group of companies* , started as Sachdeva Contructions Pvt. Ltd. was incorporated in the year 2003 with a mission of “*Turning Dreams into Reality.*”. Having almost a decade of experience in civil construction and contracting business, Apex Group is one of the largest players among the real estate developers of the nation. It is headed by Mr. Satnam Singh Sachdeva. Since its inception, the group has always strived for the quality standards, customer oriented approach, robust engineering, non-negotiable business ethics, and transparency leads to one of the most preferred brands in the real estate industry. It has received several quality certifications including ISO 9001-2000 in 2007. With its head office at Ghaziabad (U.P.), Apex Group Of Companies has successfully accomplished many residential and commercial projects of large magnitude with “On Time Deliveries.”



# Our Other Projects



**Apex Athena, Sec-75 Noida**



**Apex The Florus, Vasundhra, Gzb**



**Apex Acacia Valley, Vaishali, Gzb**



**Apex Green Valley, Vaishali, Gzb**



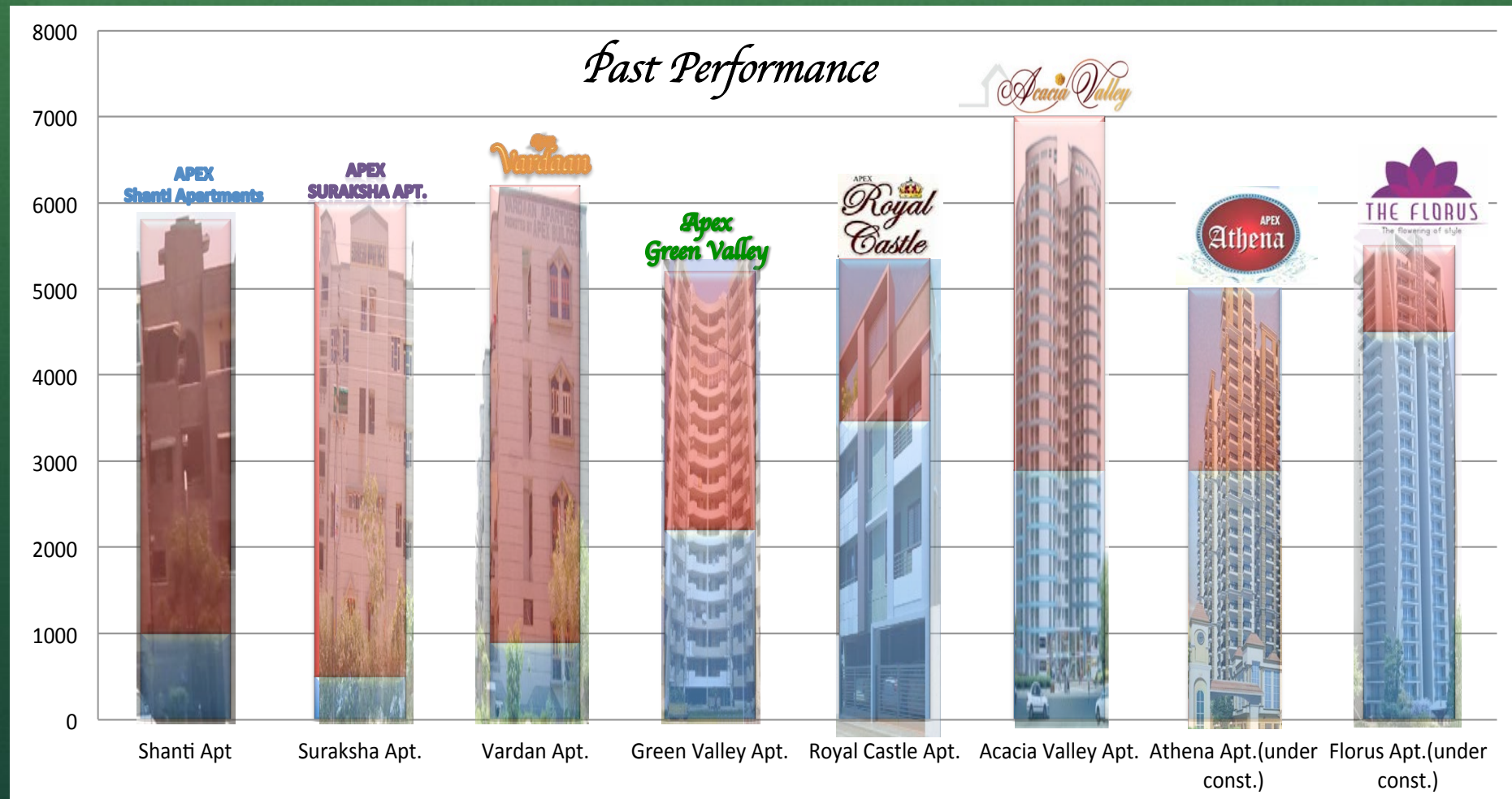
**Apex Vardan Apt., Indirapuram, Gzb**



**Apex Royal Castle, Indirapuram, Gzb**



# Our Past Speaks For Itself

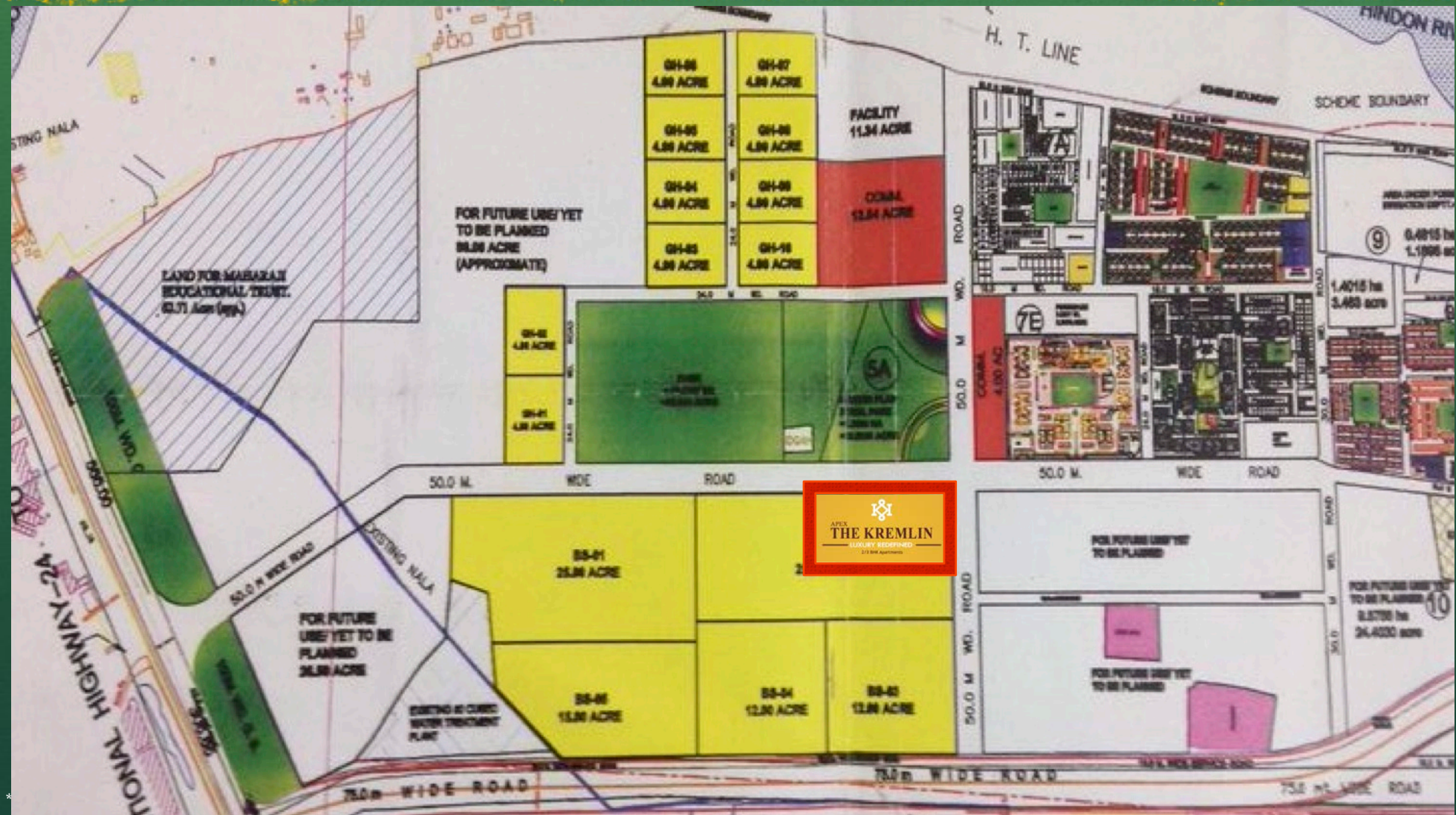


\* All facts and figures are only depictive in nature and end product may differ and these should not be held as a promise.

# APEX THE KREMLIN

Apex The Kremlin is a project which aims to bring the Russian Luxury for its residents in a well connected area of Indirapuram Extension (Siddhartha Vihar). This project boasts of following features which makes this project stand apart from the regular lot of projects offered by developers.







# Futuristic Elevation

(With Russian Theme)



A House is a matter of pride for every person, hence we create structures worthy of your residency and which make you feel special.

# Proximity To Metro



With a metro station under construction just 900 mtrs apx. (Walking Distance).  
From the project location, its highly connected to the whole of NCR.



# Plot Facing 40 Acres of Park Area.



The Plot faces a huge park measuring 40 acres, providing a pristine view to the Kremlin residents.



# Proximity to Indirapuram



Project is in close proximity to mall capital of NCR, Indirapuram, Ghaziabad.



# Connected To Major Highways.



Project is connected to Major Highways Like NH-24 and Faridabad- Noida-Ghaziabad Expressway.



# Excellent Location



The Kremlin is located at the best possible location at the central point of NOIDA, GHAZIABAD and DELHI.



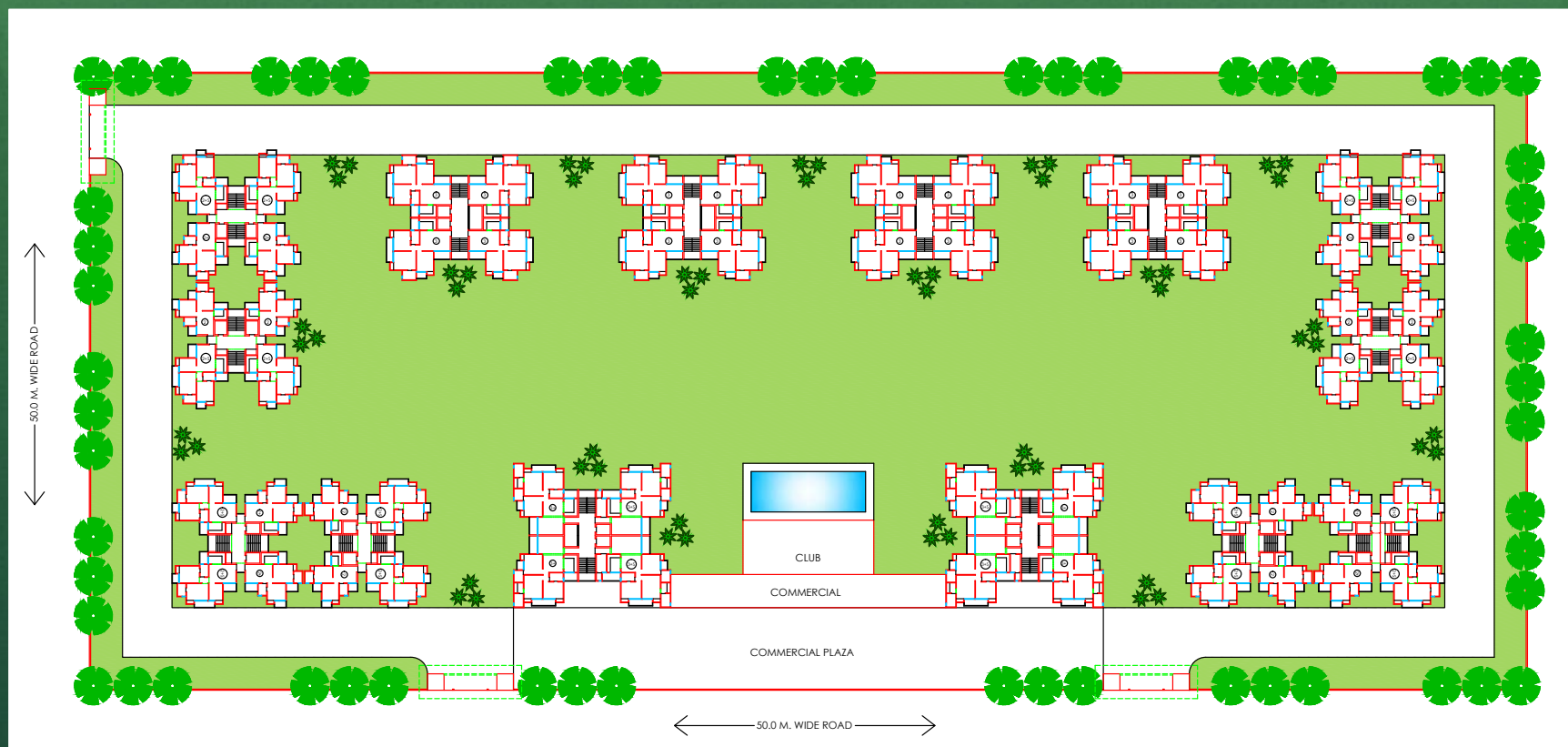
# 100% Ganga Water



The Project is supplied with 100 % of Ganga water scheme water



# A Plot Measuring 7 Acres.

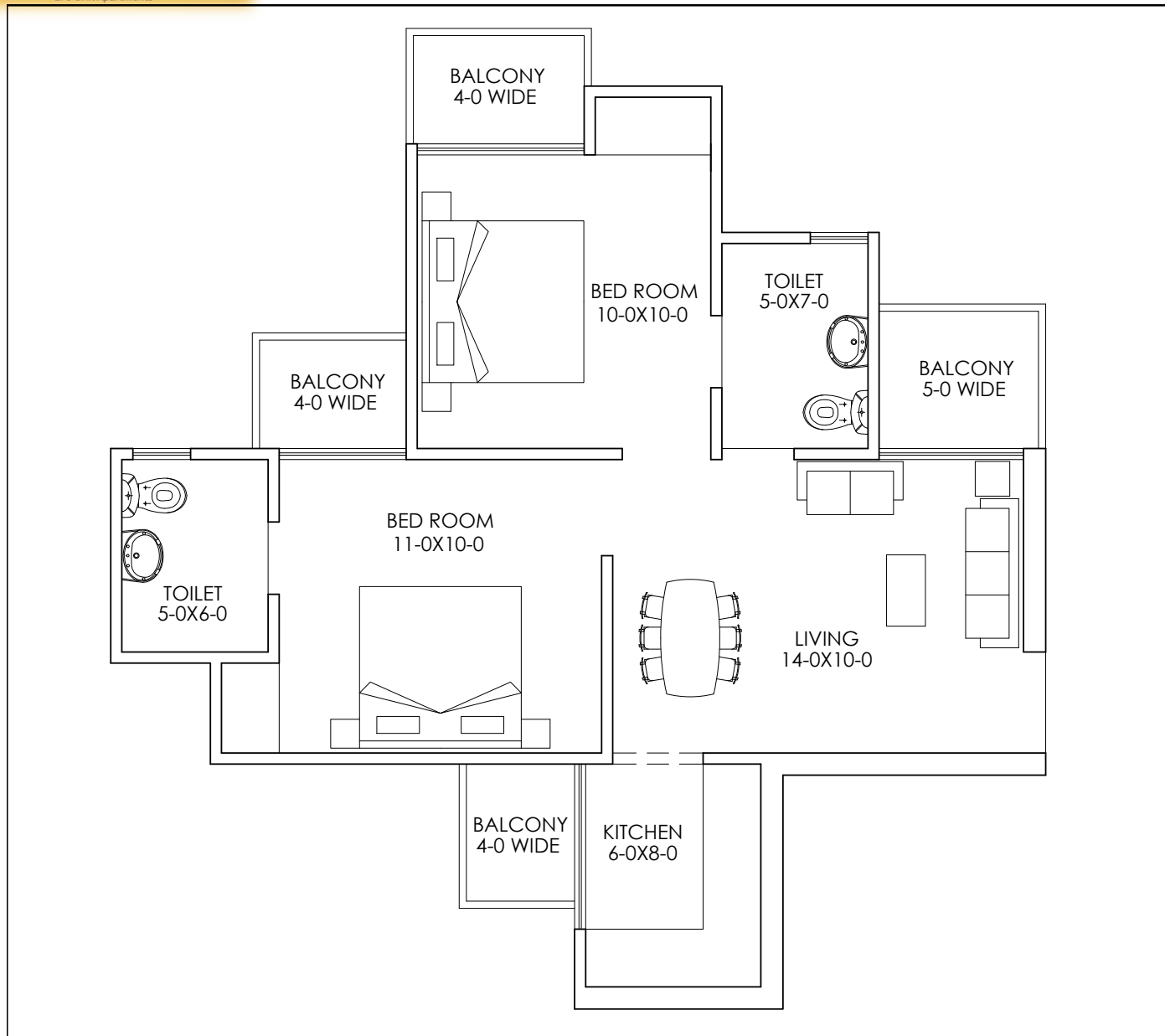


A Huge Campus of 7 Acres with spacious tower placements with 1.5 Acres of central green. Serviced By Two 50 mtr Roads.



# Various Flat Sizes Available For Apex The Kremlin Are:





**TOTAL AREA FOR ONE UNIT TYPE-2:-**

UNIT AREA	= 535 SQ.FT.
CIRCULATION AREA	= 110 SQ.FT.
BALCONY AREA	= 91 SQ.FT.
CUPBOARD AREA	= 15 SQ.FT.
FIRE STAIR AREA	= 40 SQ.FT.
MACHINE & MUMTY AREA	= 08 SQ.FT.
TOTAL UNIT AREA	= 801 SQ.FT.
<b>BUILT UP AREA</b>	<b>= 641 SQ.FT.</b>
<b>SUPER AREA</b>	<b>= 814 SQ.FT.</b>

**PROJECT:-**

GROUP HOUSING FOR  
**APEX KREMLIN**  
PLOT NO.-BS-2  
SIDDHART VIHAR, GHAZIABAD

**DRG. TITLE:-**

TWO BED ROOM (TYPE-2)

SCALE:-1:50

DRG. NO.:-02

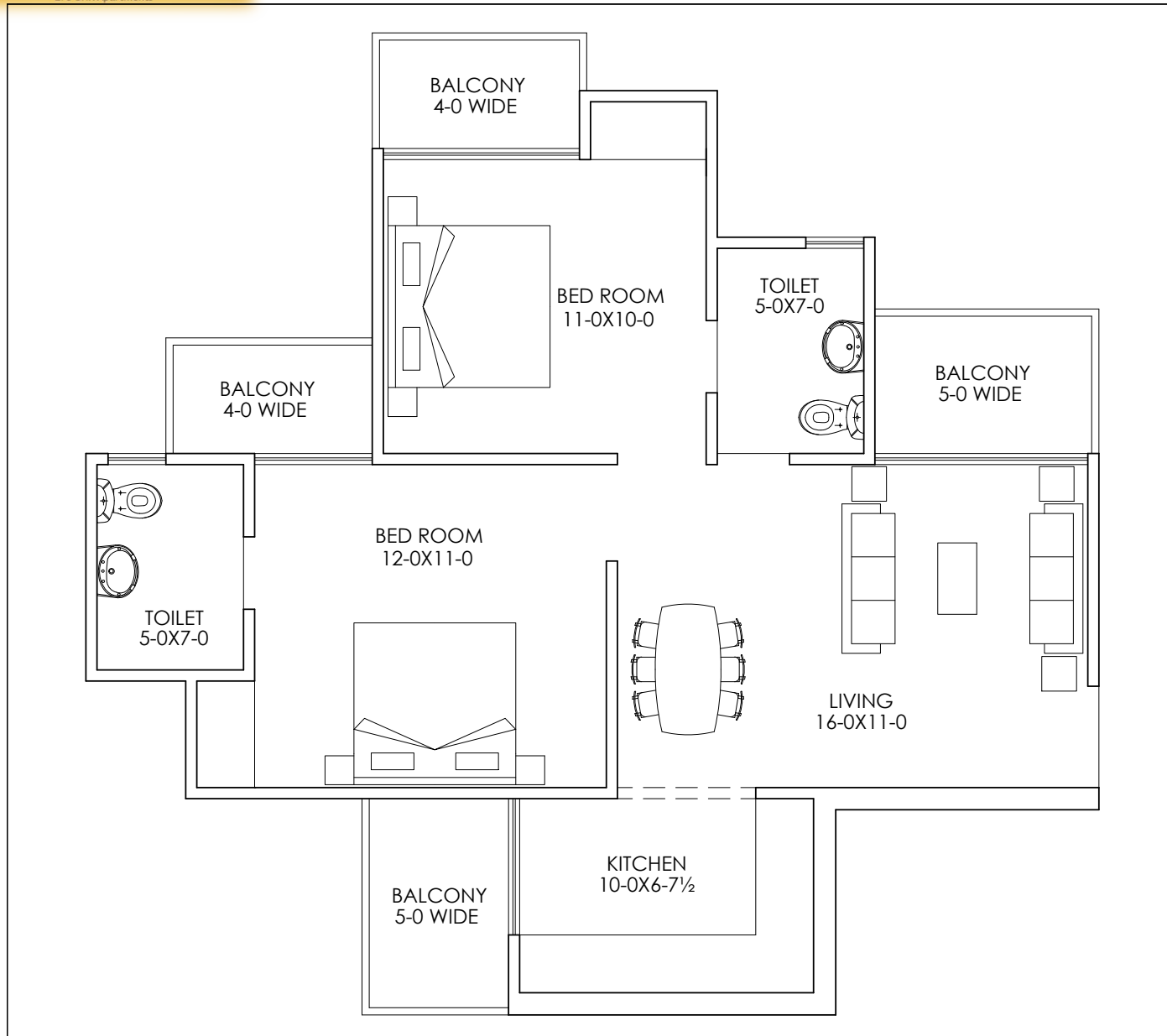
DLT.BY.:-Mukesh

DATE:-05/08/2014

**ARCHITECTS:-**

**ANDLEYS ASSOCIATES PVT. LTD.**  
ARCHITECTS ENGINEERS PLANNERS  
39 HOUSING SOCIETY N.D.S.E.-I NEW DELHI- 110049





**TOTAL AREA FOR ONE UNIT TYPE-2+ :-**

UNIT AREA	= 630 SQ.FT.
CIRCULATION AREA	= 110 SQ.FT.
BALCONY AREA	= 130 SQ.FT.
CUPBOARD AREA	= 18 SQ.FT.
FIRE STAIR AREA	= 40 SQ.FT.
MACHINE & MUMTY AREA	= 08 SQ.FT.
TOTAL UNIT AREA	= 936 SQ.FT.
<b>BUILT UP AREA</b>	<b>= 778 SQ.FT.</b>
<b>SUPER AREA</b>	<b>= 988 SQ.FT.</b>

**PROJECT:-**

GROUP HOUSING FOR  
**APEX KREMLIN**  
PLOT NO.-BS-2  
SIDDHART VIHAR, GHAZIABAD

**DRG. TITLE:-**

TWO BED ROOM (TYPE-2+)

SCALE:-1:50

DRG. NO.:-03

DLT.BY.:-Mukesh

DATE:-05/08/2014

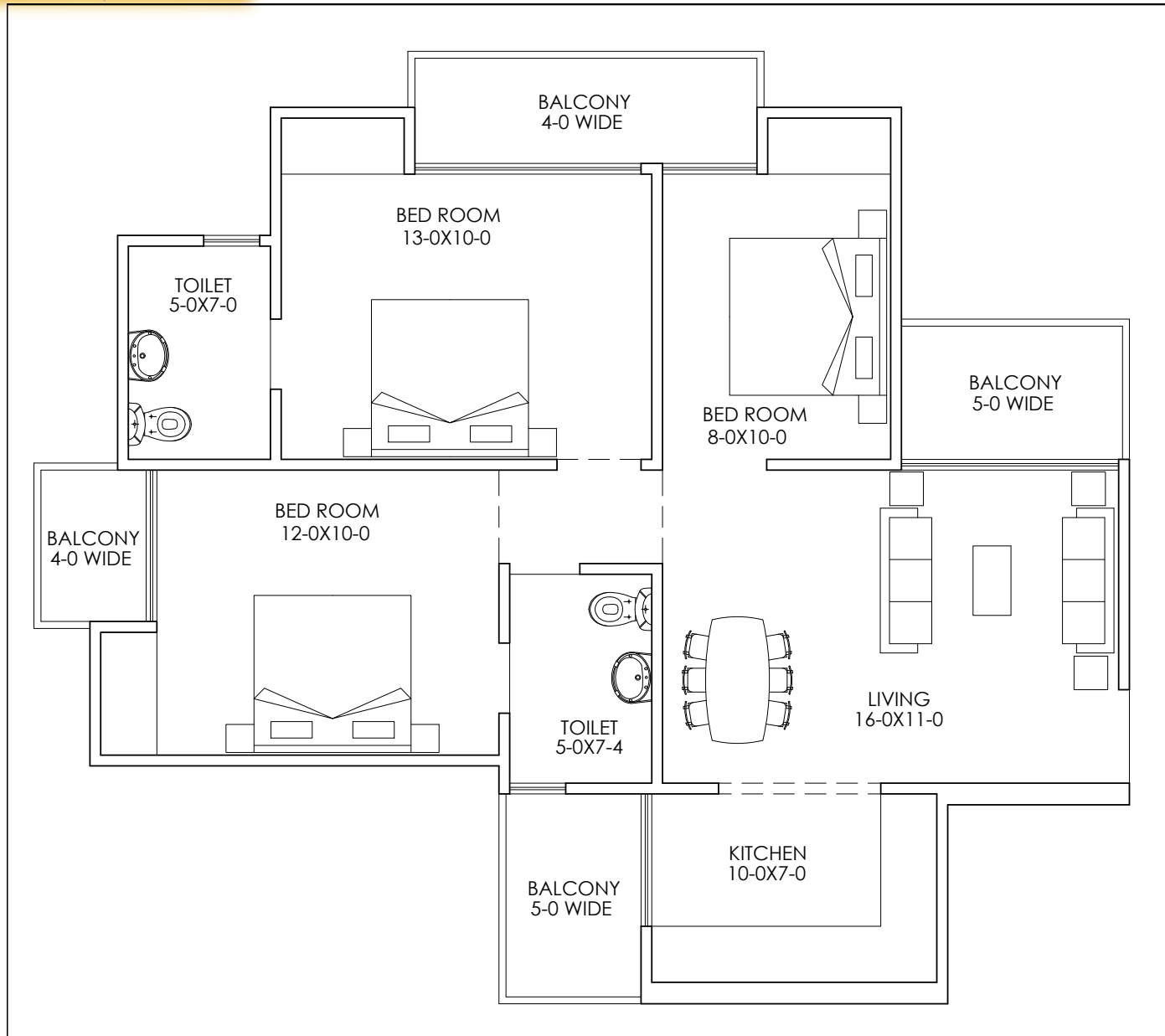
**ARCHITECTS:-**

**ANDLEYS ASSOCIATES PVT. LTD.**  
ARCHITECTS ENGINEERS PLANNERS  
39 HOUSING SOCIETY N.D.S.E.-I NEW DELHI- 110049





APEX  
**THE KREMLIN**  
LUXURY REDEFINED  
2/3 BHK Apartments



**TOTAL AREA FOR ONE UNIT TYPE-2+S:-**

UNIT AREA	= 747 SQ.FT.
CIRCULATION AREA	= 110 SQ.FT.
BALCONY AREA	= 145 SQ.FT.
CUPBOARD AREA	= 18 SQ.FT.
FIRE STAIR AREA	= 40 SQ.FT.
MACHINE & MUMTY AREA	= 08 SQ.FT.
TOTAL UNIT AREA	= 1068 SQ.FT.
<b>BUILT UP AREA</b>	<b>= 910 SQ.FT.</b>
<b>SUPER AREA</b>	<b>= 1156 SQ.FT.</b>

**PROJECT:-**

GROUP HOUSING FOR  
**APEX KREMLIN**  
PLOT NO.-BS-2  
SIDDHART VIHAR, GHAZIABAD

**DRG. TITLE:-**

TWO BED ROOM + STUDY (TYPE-2+)

SCALE:-1:50

DRG. NO.:-04

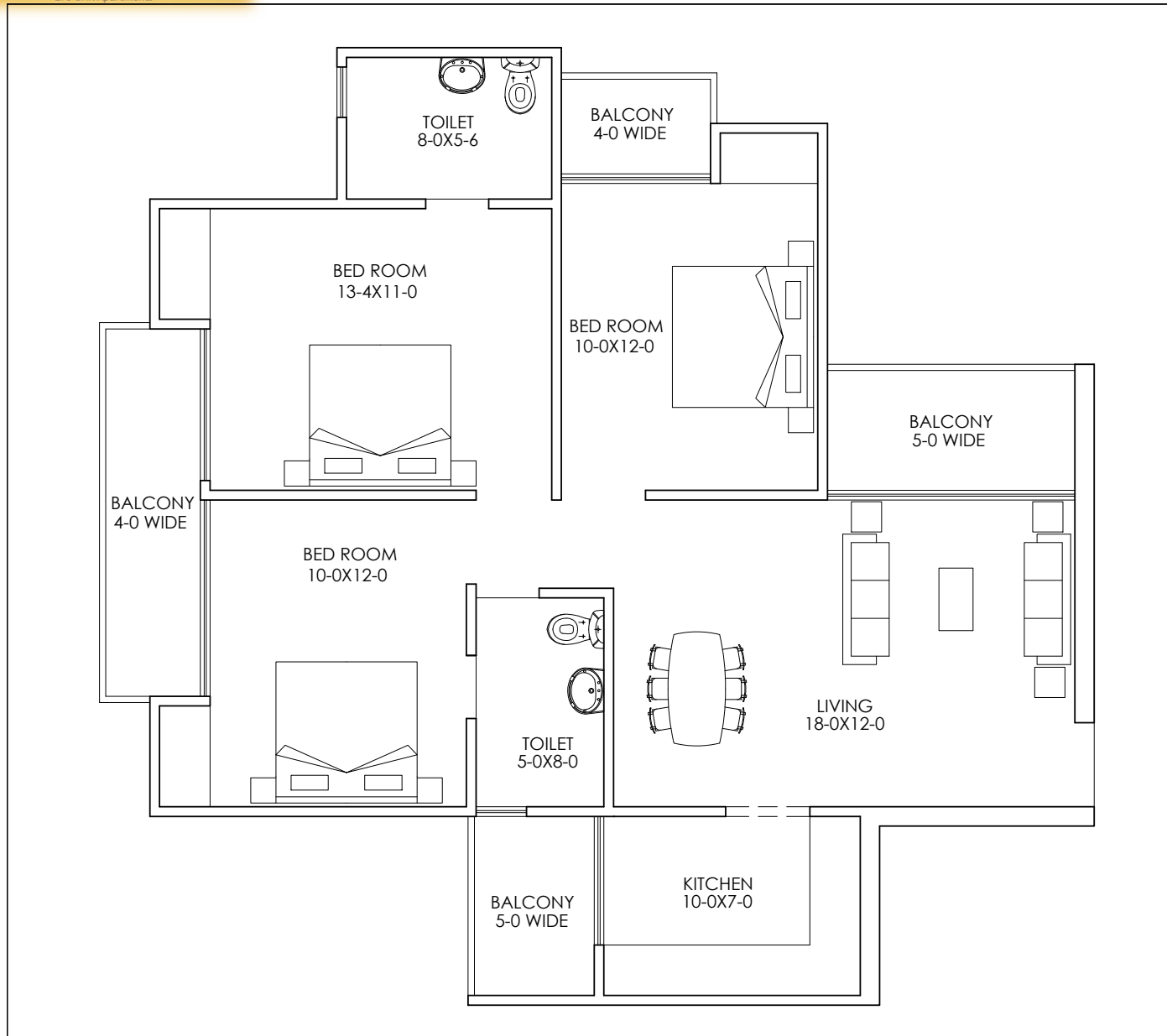
DLT.BY.:-Mukesh

DATE:-05/08/2014

**ARCHITECTS:-**

**ANDLEYS ASSOCIATES PVT. LTD.**  
ARCHITECTS ENGINEERS PLANNERS  
39 HOUSING SOCIETY N.D.S.E.-I NEW DELHI- 110049





**TOTAL AREA FOR ONE UNIT TYPE-3:-**

UNIT AREA	= 869 SQ.FT.
CIRCULATION AREA	= 100 SQ.FT.
BALCONY AREA	= 170 SQ.FT.
CUPBOARD AREA	= 27 SQ.FT.
FIRE STAIR AREA	= 40 SQ.FT.
MACHINE & MUMTY AREA	= 08 SQ.FT.
TOTAL UNIT AREA	= 1214 SQ.FT.
<b>BUILT UP AREA</b>	<b>= 1066 SQ.FT.</b>
<b>SUPER AREA</b>	<b>= 1354 SQ.FT.</b>

**PROJECT:-**

GROUP HOUSING FOR  
**APEX KREMLIN**  
PLOT NO.-BS-2  
SIDDHART VIHAR, GHAZIABAD

**DRG. TITLE:-**

THREE BED ROOM+TWO TOILET (TYPE-3)

SCALE:-1:50

DRG. NO.:-05

DLT.BY.:-Mukesh

DATE:-05/08/2014

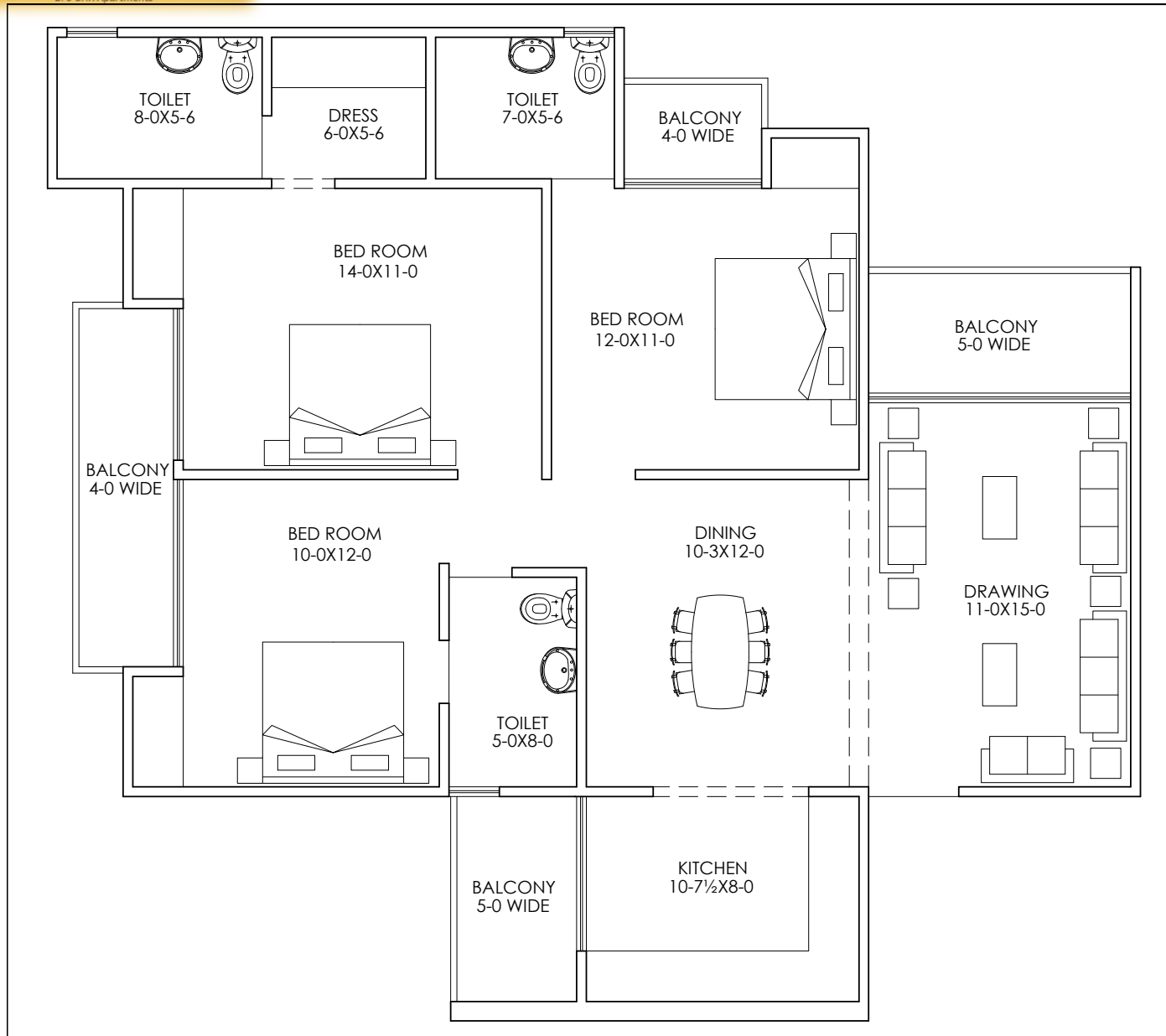
**ARCHITECTS:-**

**ANDLEYS ASSOCIATES PVT. LTD.**  
ARCHITECTS ENGINEERS PLANNERS  
39 HOUSING SOCIETY N.D.S.E.-I NEW DELHI- 110049





APEX  
**THE KREMLIN**  
LUXURY REDEFINED  
2/3 BHK Apartments



**TOTAL AREA FOR ONE UNIT TYPE-3+ :-**

UNIT AREA	= 1057 SQ.FT.
CIRCULATION AREA	= 140 SQ.FT.
BALCONY AREA	= 174 SQ.FT.
CUPBOARD AREA	= 27 SQ.FT.
FIRE STAIR AREA	= 40 SQ.FT.
MACHINE & MUMTY AREA	= 08 SQ.FT.
TOTAL UNIT AREA	= 1432 SQ.FT.

**BUILT UP AREA = 1273 SQ.FT.**

**SUPER AREA = 1598 SQ.FT.**

**PROJECT:-**

GROUP HOUSING FOR  
**APEX KREMLIN**  
PLOT NO.-BS-2  
SIDDHART VIHAR, GHAZIABAD

**DRG. TITLE:-**

THREE BED ROOM+THREE TOILET (TYPE-3+)

SCALE:-1:50

DRG. NO.:-06

DLT.BY.:-Mukesh

DATE:-05/08/2014

**ARCHITECTS:-**

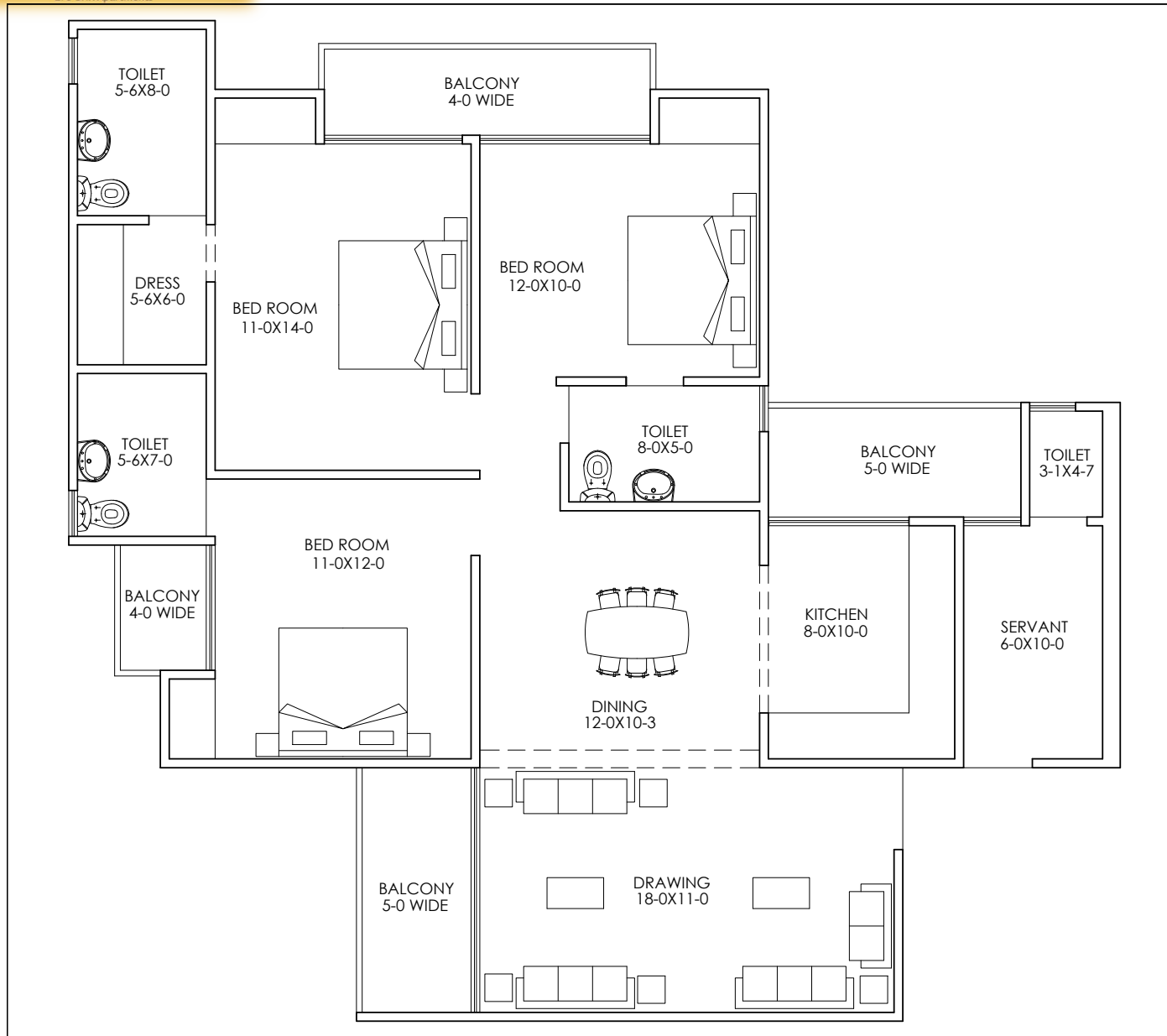
**ANDLEYS ASSOCIATES PVT. LTD.**  
ARCHITECTS ENGINEERS PLANNERS

39 HOUSING SOCIETY N.D.S.E.-I NEW DELHI- 110049





APEX  
**THE KREMLIN**  
LUXURY REDEFINED  
2/3 BHK Apartments



**TOTAL AREA FOR ONE UNIT TYPE-3+S:-**

UNIT AREA	= 1175 SQ.FT.
CIRCULATION AREA	= 140 SQ.FT.
BALCONY AREA	= 186 SQ.FT.
CUPBOARD AREA	= 27 SQ.FT.
FIRE STAIR AREA	= 40 SQ.FT.
MACHINE & MUMTY AREA	= 08 SQ.FT.
TOTAL UNIT AREA	= 1576 SQ.FT.
<b>BUILT UP AREA</b>	<b>= 1388 SQ.FT.</b>
<b>SUPER AREA</b>	<b>= 1763 SQ.FT.</b>

PROJECT:-

GROUP HOUSING FOR  
**APEX KREMLIN**  
PLOT NO.-BS-2  
SIDDHART VIHAR, GHAZIABAD

DRG. TITLE:-

THREE BED ROOM+SERVANT (TYPE-3+S)

SCALE:-1:50

DRG. NO.:-07

DLT.BY.:-Mukesh

DATE:-05/08/2014

ARCHITECTS:-

**ANDLEYS ASSOCIATES PVT. LTD.**  
ARCHITECTS ENGINEERS PLANNERS  
39 HOUSING SOCIETY N.D.S.E.-I NEW DELHI- 110049



# Thank You

For Joining Us In The Journey Towards Ultimate Luxury.



\* All facts and figures are only depictive in nature and end product may differ and these should not be held as a promise.