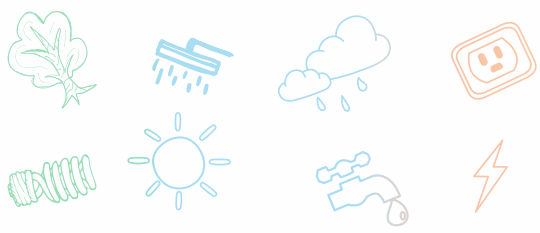




**Amaranthine**<sup>KUMARI</sup>



Kumari Builders & Developers is the fastest growing real estate company in Bangalore committed to build homes for life. Superior Quality Detail and Perfection are the standards that KBD demands throughout its project. With each project, KBD continue to raise the bar of affordable luxury living consistently, providing unparalleled customer experience and setting landmark in affordable luxury living.



# Amaranthine

KUMARI

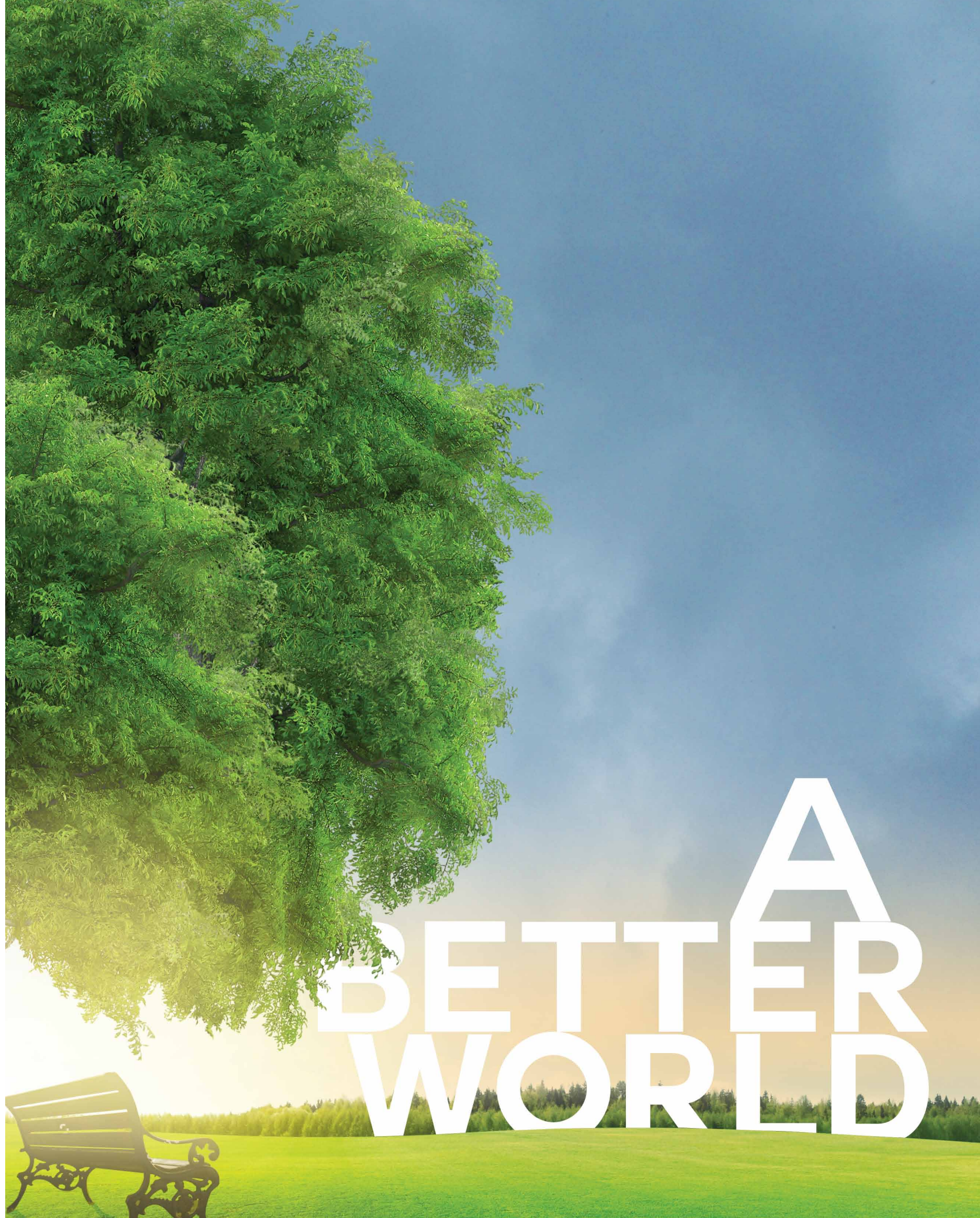
Kumari Builders & Developers presents Amaranthine to make savings a part of your lifestyle. At Amaranthine we have followed a clear direction right from beginning, the aim to reduce, reuse and recycle and that's one of the many factors that makes it a futuristic project. Amaranthine embraces nature and utilizes green technologies including solar panels, roof gardens and grey water recycling systems for effective energy, water and waste management.





For a greener you and me.

At a stage where the world today is gravitating towards "green buildings" programmed to care for the environment and occupants alike, Amaranthine made sure no stone left unturned to make it a complete sustainable ecosystem. The future-ready initiatives by Amaranthine have made the project one of the very few platinum rated projects in Bangalore by Indian Green Building Council





The starting point of the planning for Amaranthine was principles of sustainability and natural convenience. Cutting-edge sustainability features appear throughout the master plan and each apartment design ensures that your energy requirements are minimised and water- consumption is optimised. These measures directly translate into savings on utility bills and a healthy living environment, ensuring you do your bit for the environment as well. At Amaranthine we offer quality living space that also makes you a saviour by saving the four most essential elements of life – Water, Energy, Health & Time.





## Because it means everything

Reusing and recycling water supplies is a key part of reducing the pressure on our water resources and the environment and these are the key principles of our Integrated water-recycling system. Amaranthine's water management system is one of the most complex design problems we have solved. It delivers a higher quality of water than standard systems. All the water that is supplied to your house is reused and recycled after necessary purification processes and supplied back.

# SAVE WATER



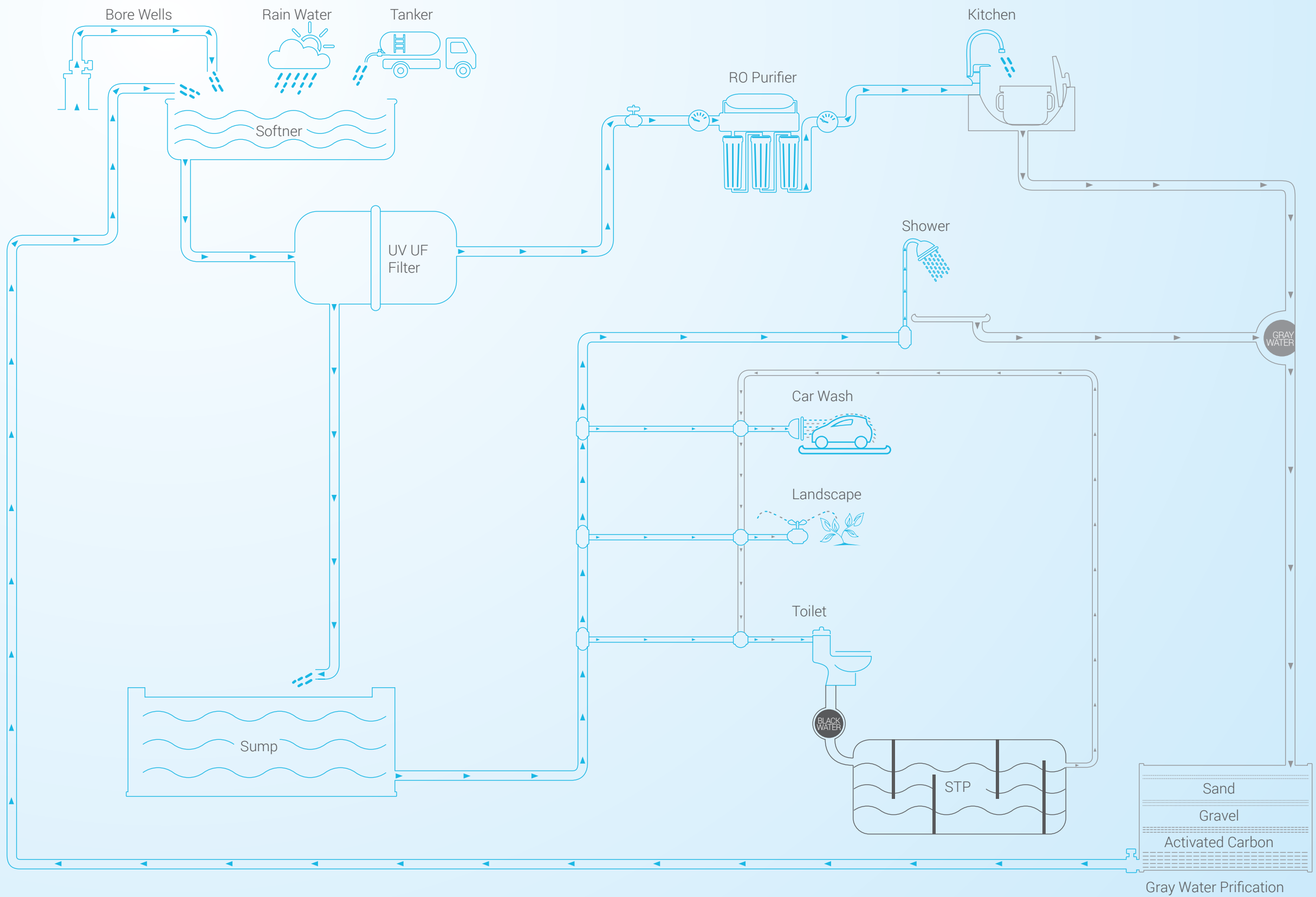


# BE THE <sup>WATER</sup> SAVIOUR!

Every drop counts and we aim to save that. The purification process purifies the water so well, that there is no need of individual RO at homes.

The advanced STP gives 90% pure water. By this process you not only save water, but you also save money because the tanker bills are reduced up-to 80%. The technique of rain water harvesting too is 100% efficiently used as to reduce the usage of water from other resources. It may seem like a simple activity but unbelievably it saves 50,000 litres of water in a day. We believe 'water is precious but so are you, that's why we save it for you'.





A central water softening plant conditions a variety of different water sources and pipes soft water to all taps. Drinking water is conditioned in a centralised RO and piped to every kitchen, reducing the cost and the need for any personal water purifier.





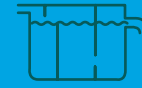
**100%**  
Recycled water



**100%**  
Efficient usage of  
harvested rain water



**80%**  
Reduction in  
water tanker bills



**90%**  
Pure water through  
Advanced STP



# Savings



**50,000**  
Litres of water  
saved every day



**Rs.18,740/-**  
Saved in water  
per apartment

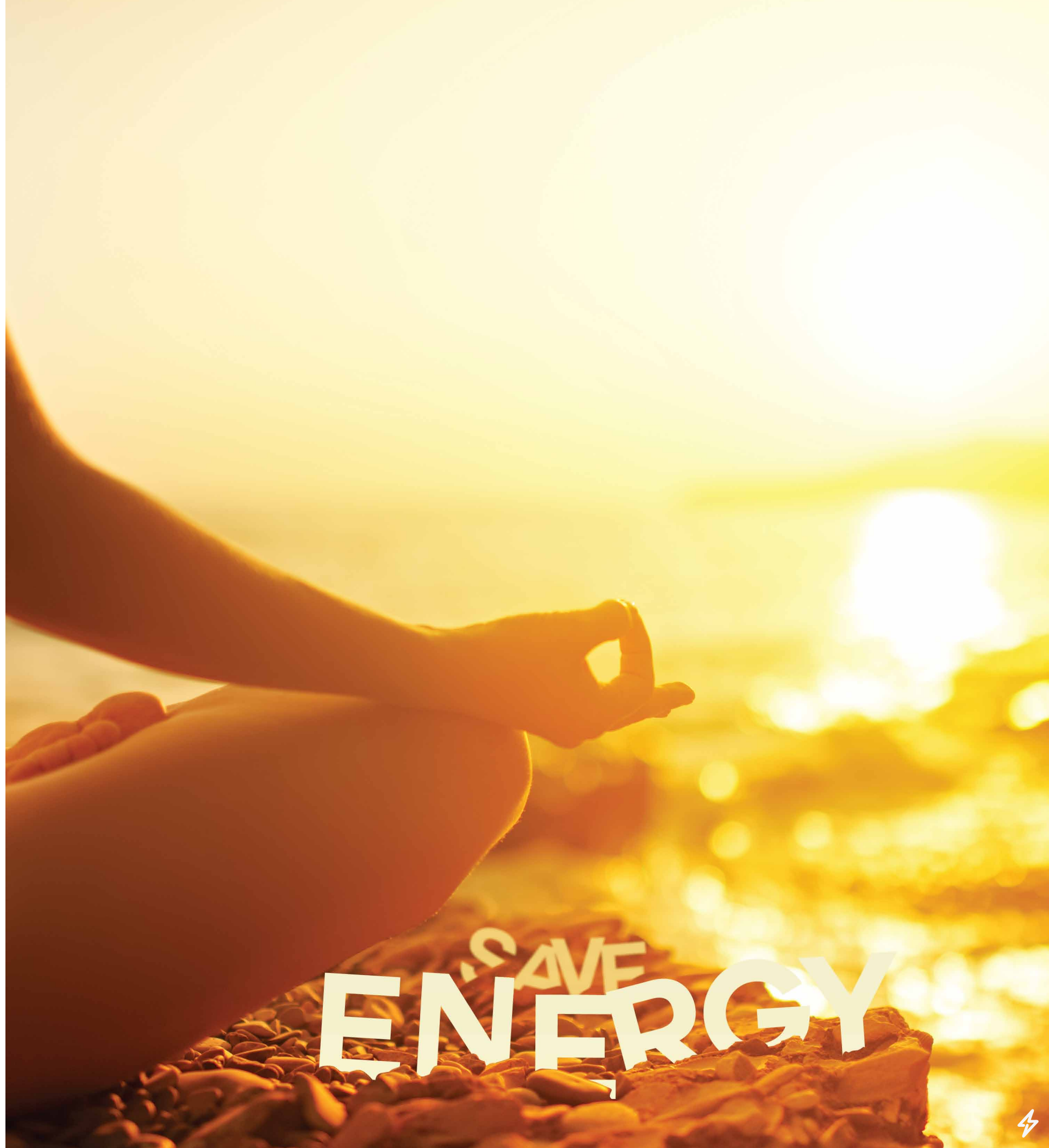


**0**  
Requirement for  
Individual RO units



## Because the light saved, is the life saved

At Amaranthine, we don't just aim to give you a better lifestyle, but also make you a better citizen for the environment. The energy-saving measures we have adopted in Amaranthine helps in minimising the impact on the environment to the best extend possible. The design includes a range of energy saving materials and fittings to efficently use the energy to provide heating and lighting in the project. The additional measures such as extra insulation, high energy performing windows, the savings have been trebled.

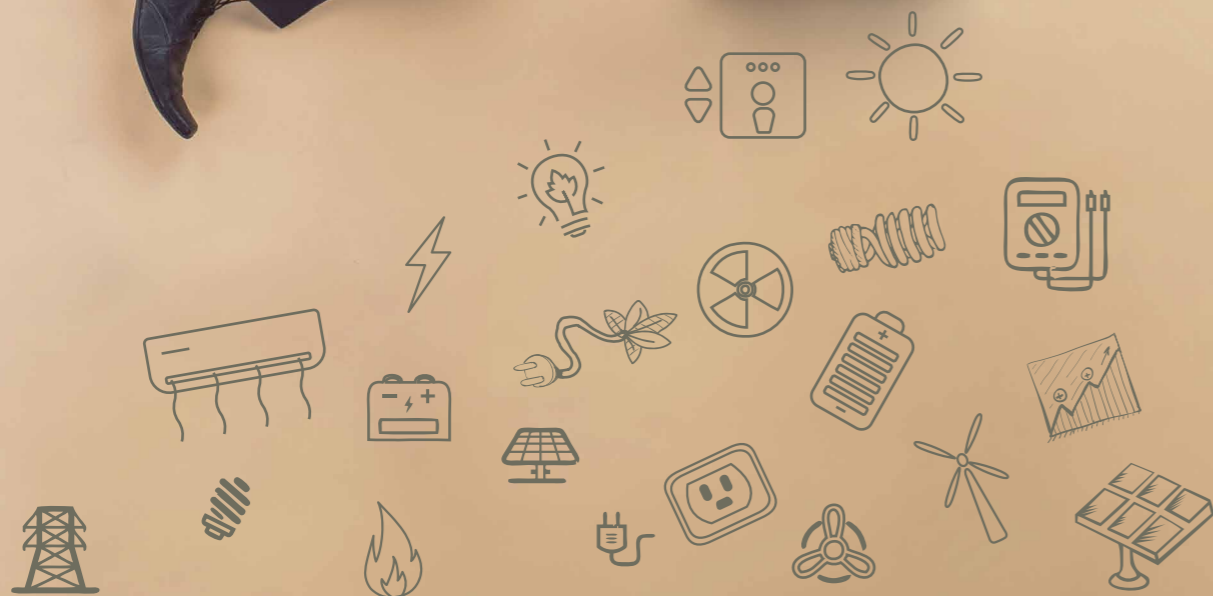




# BE THE <sup>Energy</sup> SAVIOUR!

With us, you need not even worry about your electricity bills because we have made it very feasible. All the electricity used in apartment, gym, party halls etc. is 100% from solar energy. The lifts too are gear-less hence consuming 25% less power. The numerous ways to reduce both carbon footprint and recurring energy costs has been adopted in Amaranthine, making you a energy saviour.

The ventilation and cooling techniques used in Amaranthine has helped us to eliminate the requirement for wasteful artificial ventilation and cooling. The usage of AAC blocks enables to get sound proof rooms, fire resistant walls and humidity free walls. At Amaranthine we have brought together a lot of features to ensure the most comfortable and eco-friendly lifestyle by lighting up your life so bright that it never fades away.





**100%**  
Free & green energy  
used for lighting



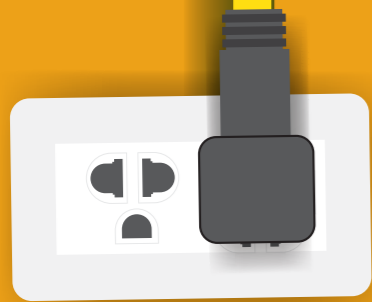
**80%**  
Of heat stopped from  
entering in by specially  
insulated windows from  
saint-gobain



**70%**  
Reduction in A/c usage



# Savings



**45%**  
More insulation by  
AAC blocks than  
normal blocks



**25%**  
Less power used  
By gear-less lifts



## Because health is wealth

At Amaranthine Healthy Living is about making healthy choices every day; healthy choices that keep us fit physically, mentally and spiritually.

The scientific evidence on the many links between housing and health has grown substantially in recent decades. Hence we have a home designed, constructed and maintained in a way that supports the health of residents. This is an integrated, systems level approach that considers the people living in the home, the structure, and the potential health hazards to prevent disease in the home.





# BE THE <sup>Health</sup> SAVIOUR!

At Amaranthine, health isn't constrained to the gym facility or fitness centre, health has been one of the major considerations from the construction stage itself. Proving it is not challenging by the use of our AAC blocks which is made of non-toxic ingredients helps in avoiding health hazards, as it does not exude gases, unlike the normal cement blocks. But it's not just these; our usage of low VOC paints too portrays our care for you. These paints help to reduce the concentration of contaminations in the ozone layer, ground water and landfills. Even when the paint is fresh, there is no strong odour hence the space is ready to be occupied quicker.

The water supplied at other areas of the house is also softened and passed through UV filter which deactivates bacteria. And with all these healthy features and facilities, just by living in Amaranthine you become a saviour of health.

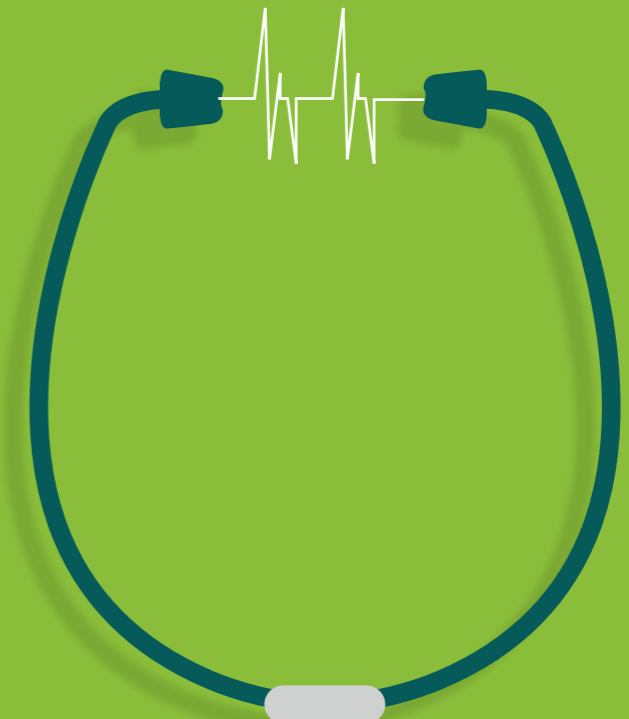




**low-VOC**  
paint helps to reduce  
allergy-causing toxins



**AAC blocks**  
are Made of non-toxic  
ingredients and Does  
not exude gases.



# Savings



**RO unit**  
supplies pure drinking  
water for drinking  
and cooking



**AAC blocks**  
helps prevent  
condensation and  
problems related  
to mildew



## Because we don't have much of it

Time is money and money is time, so when you have to spend an extra hours commuting to work or dropping kids to school you are essentially losing money. This time could be better spent on yourself or your family. Your children will appreciate you helping them with their homework or cheering them on at their football game. You will also have more time to get ready and catch a little more much-needed sleep. At Amaranthine apart from the location advantage that you have, there are a lot of basic needs that it being taken care so that you don't have to spend time again on that, thereby saving the most precious thing in the world.







# BE THE <sup>Time</sup> SAVIOUR!

One of the most basic needs for a family is that of LPG and cable connections.. Hence, to cope up with that Amaranthine with its centralised system, gives gas pipe connections at every home. Not only this, we also have provided fiber to home technology for voice and data, which means uninterrupted speedy internet so that you don't waste time waiting for the pages to load. At your home at Amaranthine, you can use different DTHs' without using any wiring or antennas. Here again, you need not waste time waiting for the cable connection to be set-up, making you a saviour of time by all means.

The major area where your time is saved the most is the location of Amaranthine. With its prime location behind Eco-space you can never get late to office, nor will you ever have to leave home hours before in-order to reach office on-time. Everything from offices to malls to schools to hospitals is in your reach, saving a lot of your time because we understand you don't have much of it and don't want to waste it.





### OFFICE

Embassy TechVillage	2 Kms
Cessna Business Park	2 Kms
Salarpuria Wallmart Lab	2 Kms
Salarpuria Touch Stone	2 Kms
RMZ Ecospace	2.8 Kms
Accenture	2.8 Kms
Bosch	3 Kms



### SHOPPING

Grand City Super market	500 mtrs
Decathlon	1.8 Kms
Big Bazar	2.8 Kms
Souls space sprit Bellandur	3.2 Kms
Brand Factory	3.5 Kms



### SCHOOLS

Gear International School	50 mtrs
Chaitanya PU College	500 mtrs
Sapthagiri Vidya Mandir	1.8 Kms
New Horizon Gurukul School	2 Kms
Geetanjali Olympaid School	2.1 Kms



# Savings



### HOSPITALS

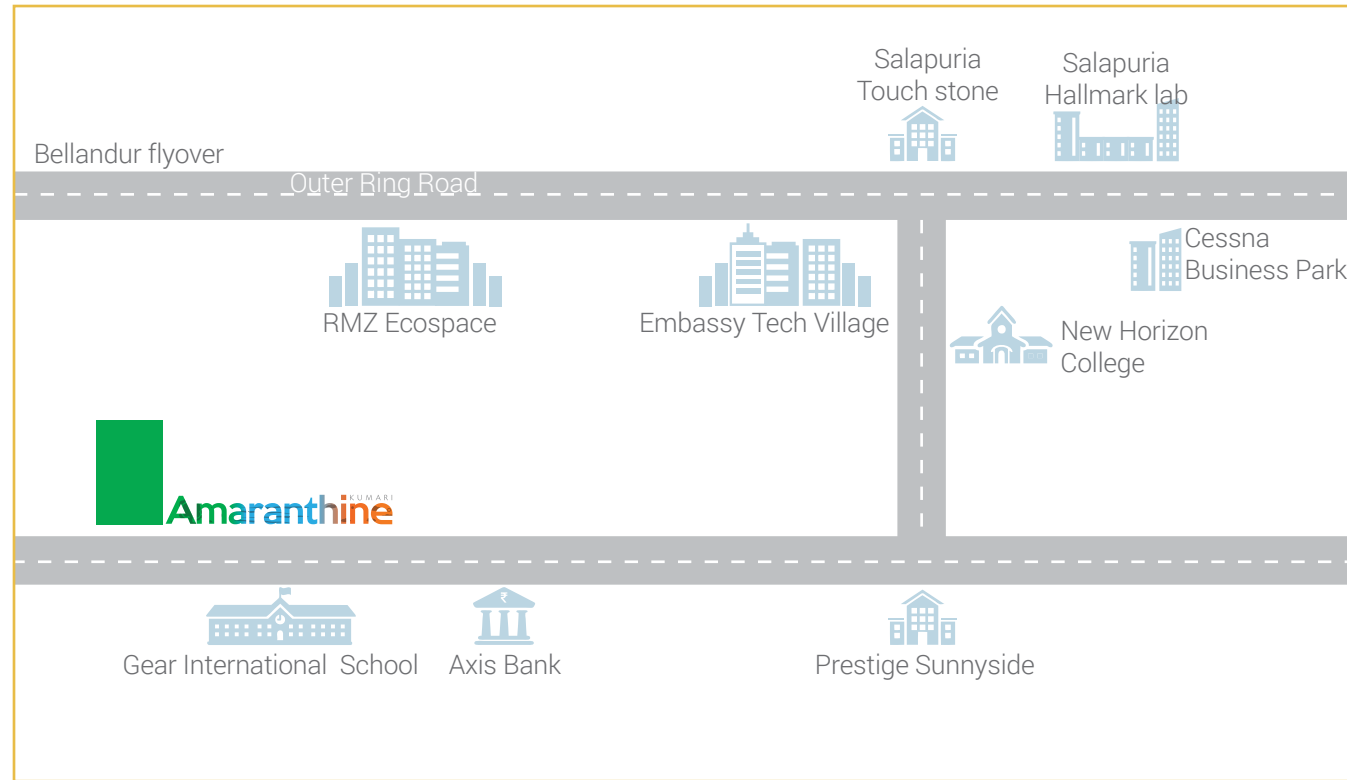
Sakra World Hospital	3 Kms
Dr. Levine Memorial Hospital	5 Kms
Devi Eye Hospital	10.5 Kms



### PROMINENT LOCATIONS

Bellandur	2 Kms
Marathalli	3.8 Kms
HSR Layout	7.5 Kms
Sarjapur Road	8 Kms
Electronic City	10 Kms

# LOCATION MAP



# AMENITIES



Meditation Room



Gym



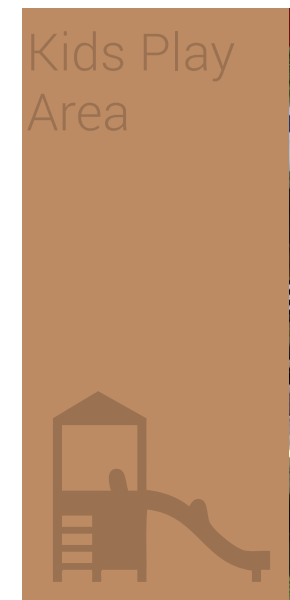
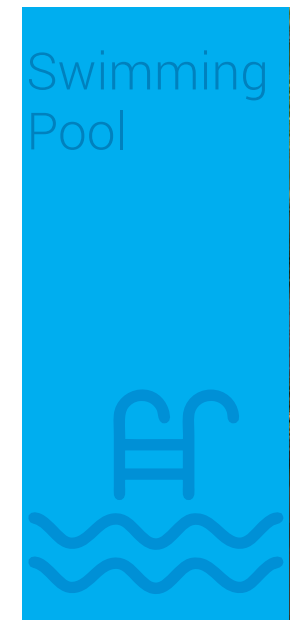
Snooker



Table Tennis



Multi Purpose Party Hall



# GREEN ENVELOPE

The envelope on three sides that acts as insulator and keeps building cool  
Clay & fly-ash brick walls with high performance glass windows

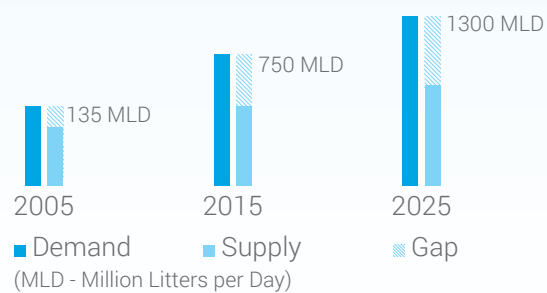


100%

**INCREASE**

in demand supply gap for water in Bangalore.

Unless addressed with effective measures, water problem may lead to evacuation in Bangalore in 10 years.

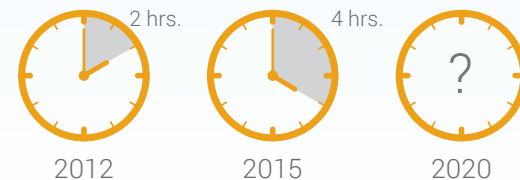


2

**FOLD**

increase in power cut in Bangalore past 5 years.

Due to decreased monsoons and other climatic changes there is acute decrease in hydro electricity production from these plants



3

**TIMES**

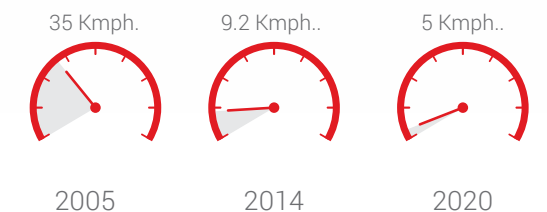
polluted is the indoor air when compared to the outside air.

560

**HOURS**

spend In Traffic by Bangaloreans last year

With the number of vehicles increasing on road the average vehicle speed also decreased drastically.





Kumari Builders and Developers  
#1197, 1st Floor, 22nd Cross, 24th Main  
Parangipalya, HSR Layout, Sector 2  
Bangalore - 560102, Karnataka, India.  
Call us: 7676 088 888  
[www.kumaribuilders.com](http://www.kumaribuilders.com)

[www.clearpicture.co.in](http://www.clearpicture.co.in)

NOTE: This brochure is having only conceptual Presentation of the Project and not a Legal offering the promoters reserve the rights to make changes in plans, specifications and elevation as deemed fit.