



DHEERAJ REALTY

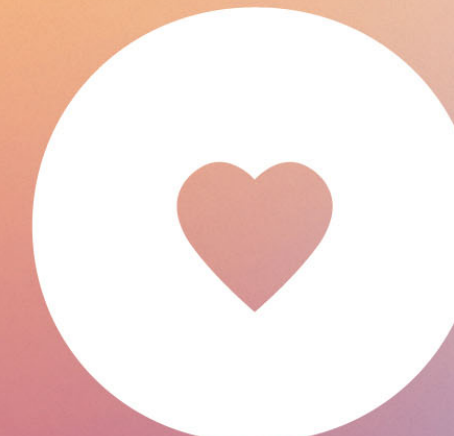
9th Floor, TCG Financial Centre, Plot No. C-53,
G Block, Bandra Kurla Complex, Mumbai 400 051
T: +91 22 6636 9182 | www.dheerajrealty.com

SALES OFFICE

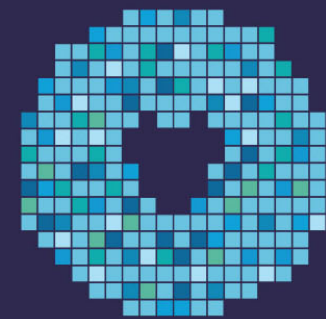
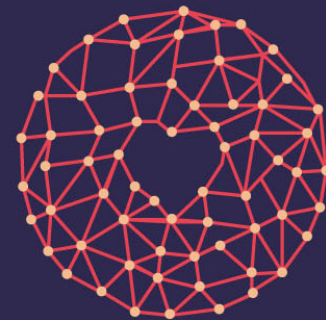
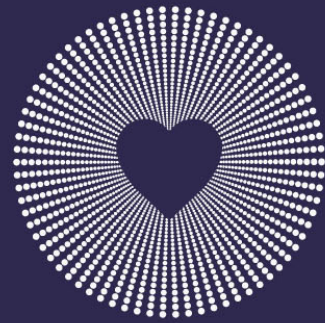
ONENESS, Link Road, adjoining Sailee Hospital,
Near Don Bosco Signal, Borivali (W), Mumbai 400 092
T: +91 22 6105 4294 | oneness@dheerajrealty.com
www.onenesshomes.com

Disclaimer:

The information contained in the print and electronic advertisement including all photographs, visuals, elevations, pictures, images, details, specifications, conceptual designs, dimensions, furniture, illustrations, fixtures, artefacts, amenities, facilities, etc., are strictly provided for representation purposes only and manifests the proposed development that may be undertaken by the company and are subject to approval from competent authorities and are not to be considered literally and shall not form a part of the standard contents of the agreement for sale of apartment. The company reserves the right to change and/or modify the same at their sole discretion.



ONENESS



MY BORIVALI. MY HOME.

There's something about Borivali that spells home. One of those places that feel right, the moment you lay eyes on them. Miles of Generous greens. Acres of unexplored open spaces. A culture as extensive as its history. And a neighbourhood bubbling with excitement. It's a little slice of paradise up North of Mumbai. And a place many communities proudly call home. Pure at heart, yet brimming with a modern lifestyle. Here's celebrating Borivali and its million little surprises. All of which have been brought together, at ONENESS.



The suburb of landmarks
gets a proud new one.

Introducing
ONENESS.



Rising majestically above the city's notable skyline, stand 4 towers of unparalleled luxury. ONENESS is defined by its exclusive location, architecture, amenities and services. Outside, you are minutes away from exploring the nature trails at Sanjay Gandhi National Park with family, or taking time off for yourself at the Pagoda. From shopping bags to jogging tracks to weekend revelries, your hands will be full. And mind enriched, constantly. Inside, a paradise of amenities will set into motion a beautiful relationship between resident and home. Manicured gardens. A 36,000 ft. clubhouse. Swimming pool and spa. A party hall and business cafe. Multiple sports courts. Essentially, the works. It's a landmark set to create history. The pride follows naturally.



Meet your expectations from
the good life, right around the corner.

There's no question about it. Borivali is a community delight. You're close to the Western Express Highway that connects you to the beautiful city of Mumbai. You're minutes away from the domestic and international airports. Look closer home, and you'll find industrious business centres all around you. Borivali has always been a multi-dimensional suburb. And with ONENESS at the heart of it, there's no reason to not fall in love.



- ♥ SWAMI VIVEKANAND INTERNATIONAL SCHOOL ♥ BORIVALI BIRYANI CENTRE ♥ APEX HOSPITAL
- ♥ SANJAY GANDHI NATIONAL PARK ♥ KANHERI CAVES ♥ VAZIRA NAKA ♥ GORAI BEACH
- ♥ DON BOSCO HIGH SCHOOL ♥ KARUNA HOSPITAL

A woman in silhouette is jogging on a hillside at sunrise. Her hair is in a ponytail and blowing in the wind. The sun is low on the horizon, creating a bright glow and lens flare. In the background, a cityscape is visible under the warm light of dawn. A white circular graphic element is positioned behind the woman's head and shoulders.

A jog at sunrise.

A dip in the eve. And a star-studded soirée at night.

Yes, landmarks are made of these.

At ONENESS, they aren't just called landmark homes as an expression. We've truly fashioned our gated community to include all the luxuries of a world-class landmark. Spend quality time with family, or some much-needed time by yourself, there's something to plunge into, every beautiful day.

Attention.

You may need a breath or two to take in everything we have on offer.

We believe you shouldn't have to look too far for everyday luxuries. Which is why, you'll find everything for you and your loved ones the moment you step outside the door. From a swimming pool and jogging track to a squash court and kids play area, there's a world of activities you can test your fitness levels in. While your little ones spend the day at the day care centre, you could try your hand at a round of snooker or the half basketball court. And to unwind, may we interest you in a relaxing corner specially reserved for the spa, steam and sauna. Here, business and pleasure walk amicably hand-in-hand, as we host an assortment of spaces to throw parties, business conferences and private dinners. For an amazing time outdoors, simply look within.



Spa, Steam & Sauna



Half Basketball Court



Meditation Lawn



Swimming Pool

Services

Convenience Store
Drivers' Room
Wi-Fi Zone
Car Washing System (6 Blocks)
CCTV in Common Area



Kids Play Zone

Leisure

Two 20-seater Mini Theatres
Landscaped Garden
Decorative Paved Compound
Grand Air Conditioning Entrance Lobby
Banquet Hall for Parties
Intellectual Hub Library
Moonlight Floating Bed
TV Lounge
Business Café
Crèche



Two 20-seater Mini Theatre



Gymnasium

Sports and Fitness

Gym
Swimming Pool
Snooker Room
Cricket Net
Table Tennis Room
Two Squash Courts
Skate Boarding
Jacuzzi, Spa, Steam and Sauna
Temperature-controlled Swimming Pool
Lawn Tennis Court
Kids Play Area
Indoor Games
Family Pool
Yoga Room
Jogging Track
Half Basketball Courts
Adventure Playground
Aerobics Room



We've thought of
everything.

You think of ways to enjoy it all.

Just as ONENESS stands proud in the midst of a bevy of comforts on the outside, we haven't spared any details on the inside either. Plush fittings and elegant furnishings, all set within a grand floor-to-ceiling height of 11 feet, are just some of the luxuries you can look forward to inside every home. Can't wait to move in, can you?

If it is luxury you want, it is luxury that you'll get.

Within the confines of your home, lies a space that's capacious and airy. Here, every conceivable comfort you can imagine, can be designed to your artistic needs. The tastefully appointed residences are furnished with vitrified flooring in all rooms. For your culinary experiments, a modular kitchen with chimney and hob stand pre-fixed in every home. Soak yourself in a calming bathroom that's adorned with branded CP fittings. Video door phones are standard in all residences for ultimate safety and security. And all our homes come Wi-Fi enabled, which means connecting with the world outside becomes a whole lot simpler. Come, step inside. Your paradise awaits.



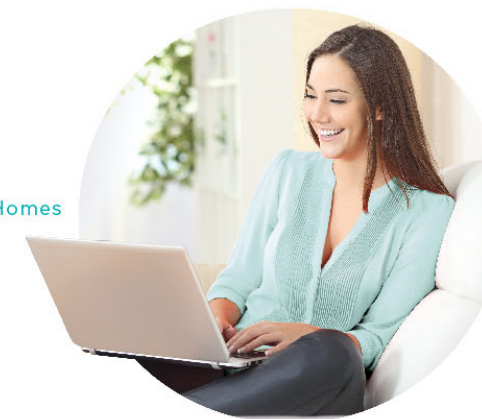
Branded CP Fittings



Modular Kitchen with White Goods



French Windows



Wi-Fi Enabled Homes



Video Door Phones

Amenities

Premium Vitrified Flooring in all Rooms, Modular Kitchen White Goods - Refrigerator, Built-in Oven, Hob & Chimney, Washing Machine, Water Purifier Provision for AC Premium Bathroom Fittings with Boiler

OTHER FACILITIES

Wi-Fi Enabled Homes
Audio-Video Door Phone
STP Plant
Rainwater Harvesting



The visionary at the heart of our blueprint.

One of India's foremost talents in architecture, Padma Bhushan awardee, architect Hafeez Contractor lends his mastery to yet another world-class residential space. It's his vision that will draw a smile upon every resident the moment they step inside the royal gates of ONENESS. Having spent a valuable amount of time on research and design, he captures the vibrant pulse of Borivali and catapults it into the realms of extravagance. Every floor and walkway. Every gaming room and garden. Perfected by a vision that stands for pure refinement.

Dheeraj Legacy.

We took our first steps towards crafting our realty future way back in 1978. And honestly, we feel we have come a long way. We have learnt many lessons and altered many perceptions. Our approach has always been simple and uncomplicated. We strive to provide luxurious living spaces with an unequivocal commitment to delivery excellence and customer satisfaction.

This dual-rooted focus has brought us the trust and attention of a valuable clientele. It has also given us the confidence to propel ourselves towards new and more ambitious projects. Today, we stand proud with our array of world-class projects across multiple locations.

We understand your dreams and have found in us the ability to crystallize them into magnificent real estate creations. Our partnerships with reputed national and international contractors, architects and vendors enables flawless delivery of these fine creations. Along with a strong commitment to regulatory compliance, we also ensure the highest standard of eco-friendliness across all the projects.



Entertainment
Raghuleela Mall
Behind Poisar Bus Depot
Mumbai
Maharashtra

Thakur Mall
Western Express
Highway



Restaurants
Borivali Biryani Centre
RM Bhattad Road
Borivali West

Aura Veg Restaurant
New Link Road
Borivali West



Shopping
Moksha Plaza
SV Road
Borivali West

Fashion Street
Borivali Station



Nature
Sanjay Gandhi National Park
Western Express Highway
Borivali East

Gorai Beach
Gorai, Borivali West

Find
the best of
everything
you **love.**