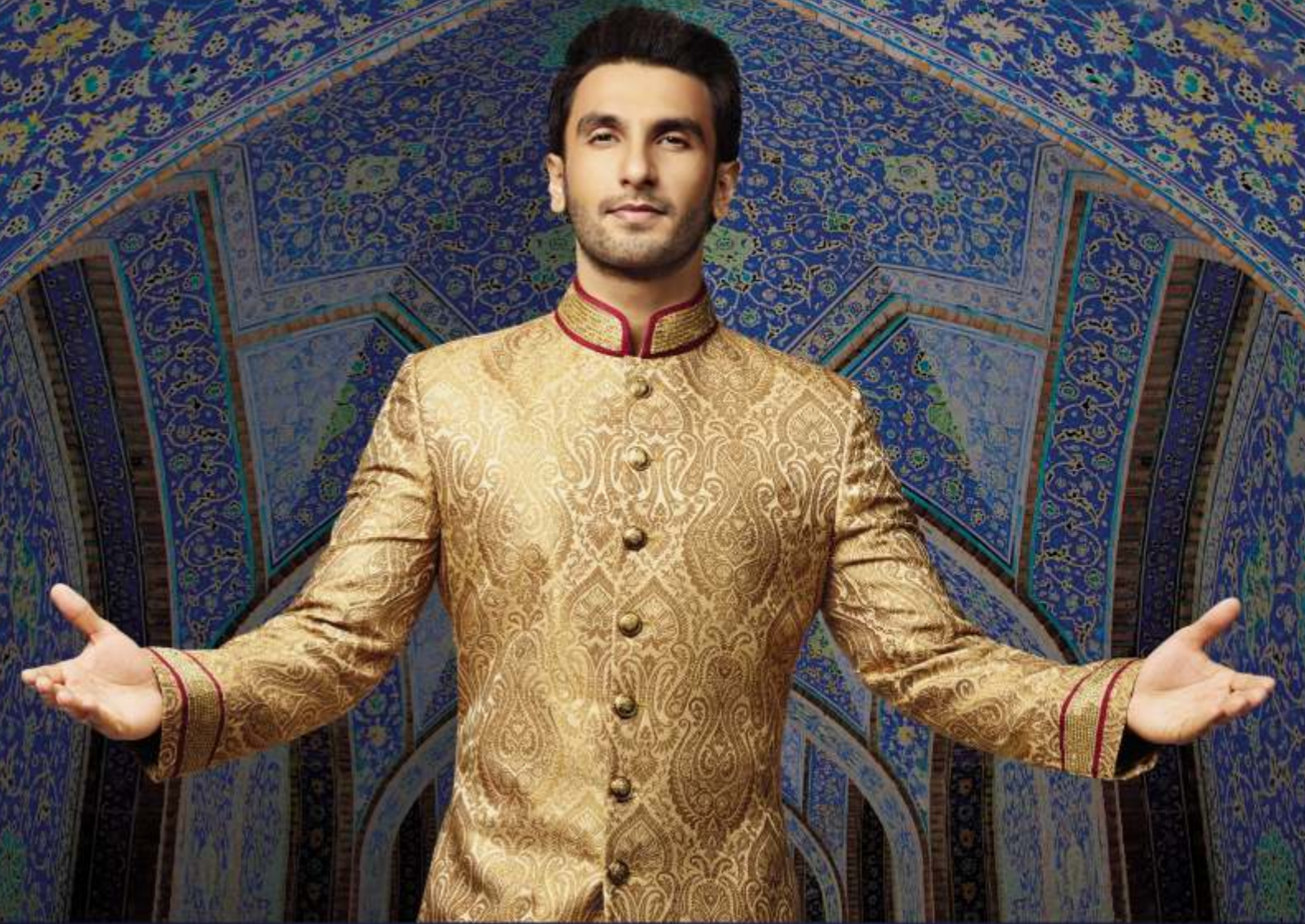


**ANCIENT PERSIAN ARCHITECTURE
MEETS CONTEMPORARY LUXURY LIVING.**

www.asl.net.in



A Project by
ARIHANT
SUPERSTRUCTURES LTD.
CONTINUING STABILITY

CLAN
+you

Call: 022 4129 2222

Site Office: Behind Sector 35, Rajanpada, Kharghar - Navi Mumbai - 410 210.
Corporate Office: 302, Persepolis Building, Plot No. 74, Sector 17, Vashi, Navi Mumbai.
Email: sales@asl.net.in

Disclaimer: The brochure and its content(s) are only for advertisement purpose and should not be considered as a part of the agreement. The developer reserves the right to change, revise and make any modifications, additions, omissions and alterations in the scheme as a whole or any part thereof at their sole discretion.

thoughttrains



ARIHANT CLAN
AALISHAN

A GRAND LIFE
KHARGHAR ANNEXE.



WELCOME TO PERSIAN ARCHITECTURE INSPIRED RESIDENCES.

Persian-style architecture instantly evokes an image of royalty, luxury and awesomeness. Most of us dream to live an ultramodern lifestyle with all luxuries, but only few achieve. Persian-styled architecture at Arihant Aalishan accomplishes this goal exceptionally by ushering in luxury and royalty.

Arihant Aalishan features a host of royal indulgences inspired by the glorious Persian nobility. It is a home to first of its kind experiences like Hammam – The Persian Spa, The Sufiyana – The Lounge & Café, The Durbar – The Double Height Entrance Lobby, Pairi Daeza - The Persian Garden, all planned to recreate Persian Styled Living.

Welcome to a grand life. The Arihant Aalishan life.



**DISCOVER A HOST OF
ROYAL INDULGENCES
INSPIRED BY
THE GLORIOUS
PERSIAN NOBILITY.**



THE HAMMAM SPA

Persian Spa with Jacuzzi, Steam and Sauna



THE SUFIYANA

Lounge & Café in Clubhouse



THE DURBAR

Double Height Entrance Lobby



PAIRI DAEZA

The Persian Garden

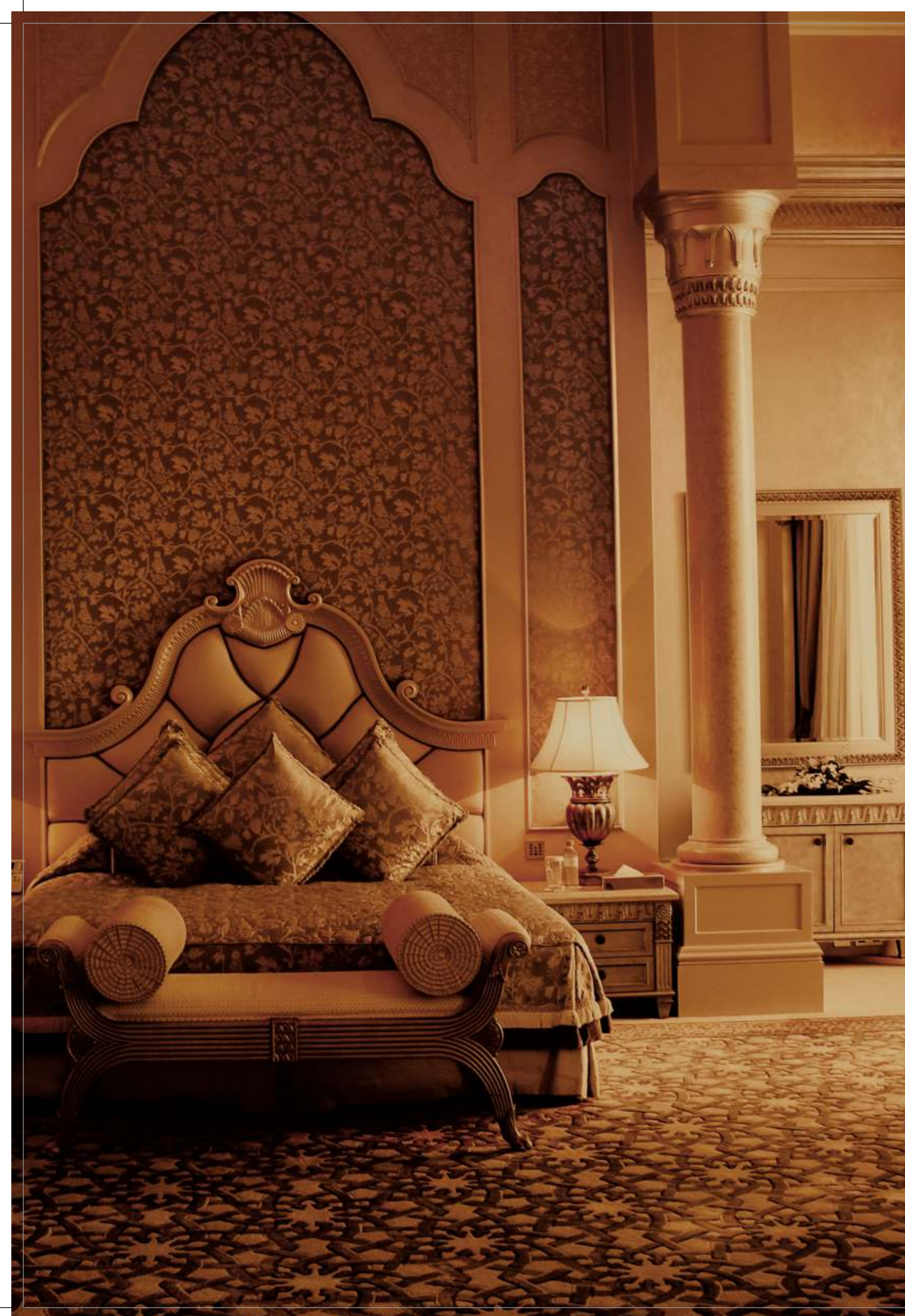
THE BEST OF
HISTORICAL ROYALTY
& CONTEMPORARY LUXURY
COME TOGETHER
TO CREATE A GRAND LIFE.



ARIHANT CLAN
AALISHAN

A GRAND LIFE

KHARGHAR ANNEXE.



PERSIAN ARCHITECTURE. REGAL INDULGENCES. AND A LIFE THAT RECREATES MAJESTIC LIVING.

PROJECT HALLMARKS

BIG-SIZED STUDIO, 2, 3 & 4 BHK RESIDENCES

53 STOREYED TOWER WITH PERSIAN ARCHITECTURE

3 MAGNIFICENT TOWERS - ZEENAT, BARAZ & KAVEH

DOUBLE-HEIGHT ENTRANCE LOBBY, INSPIRED BY PERSIAN ARCHITECTURE

PROPOSED SUPERMARKET WITHIN THE PREMISES

HIGH-SPEED ELEVATORS

24X7 VIGILANT SECURITY SYSTEM

VIDEO DOOR SECURITY SYSTEM

5 LEVEL CAR PARKING

INNOVATIVE FIRE ESCAPE CHUTE FOR SELF EVACUATION

KHARGHAR

A FUTURE MEGACITY WITH THE COMFORT AND CONVENIENCES OF THE WORLD

A biggest and leading city in Navi Mumbai, Kharghar, is blessed with green surroundings, beautiful hill views & open space making it a soothing location to live.

Its serene setting lets you relax and its well-connected city life makes you at ease.

Adjacent to conveniences like major highways, hospitals, educational institutes & many more, Kharghar truly is about to become the future megacity in Navi Mumbai.

FUTURISTIC DEVELOPMENTS

UPCOMING NAVI MUMBAI CORPORATE PARK - 1.5 KMS.

KHARGHAR VALLEY GOLF COURSE - 2 KMS.

SECTOR 35, METRO STATION - 0.5 KMS.

CENTRAL PARK - 2 KMS.



ARIHANT CLAN
AALISHAN



A GRAND ADDRESS TAKING SHAPE AMIDST NAVI MUMBAI'S GRAND LANDMARKS

LOCATION ADVANTAGES

- LOCATED AMIDST THE GREEN AND SERENE ENVIRONS
- ENTERTAINMENT CENTRES LIKE 'UTSAV CHOWK' AND 'SHILP CHOWK' NEARBY
- REPUTED EDUCATIONAL INSTITUTES IN CLOSE PROXIMITY
- WELL CONNECTED WITH THE MUMBAI-PUNE HIGHWAY
- MARKET AREAS AND OTHER CONVENIENCES LIKE MALLS, MULTIPLEXES, KHARGHAR RAILWAY STATION, ETC. AT A SHORT DISTANCE

**EXPERIENCE
THE GRANDEUR
OF ROYAL LIFESTYLE.
REDEFINING YOUR
WAY OF LIFE.**

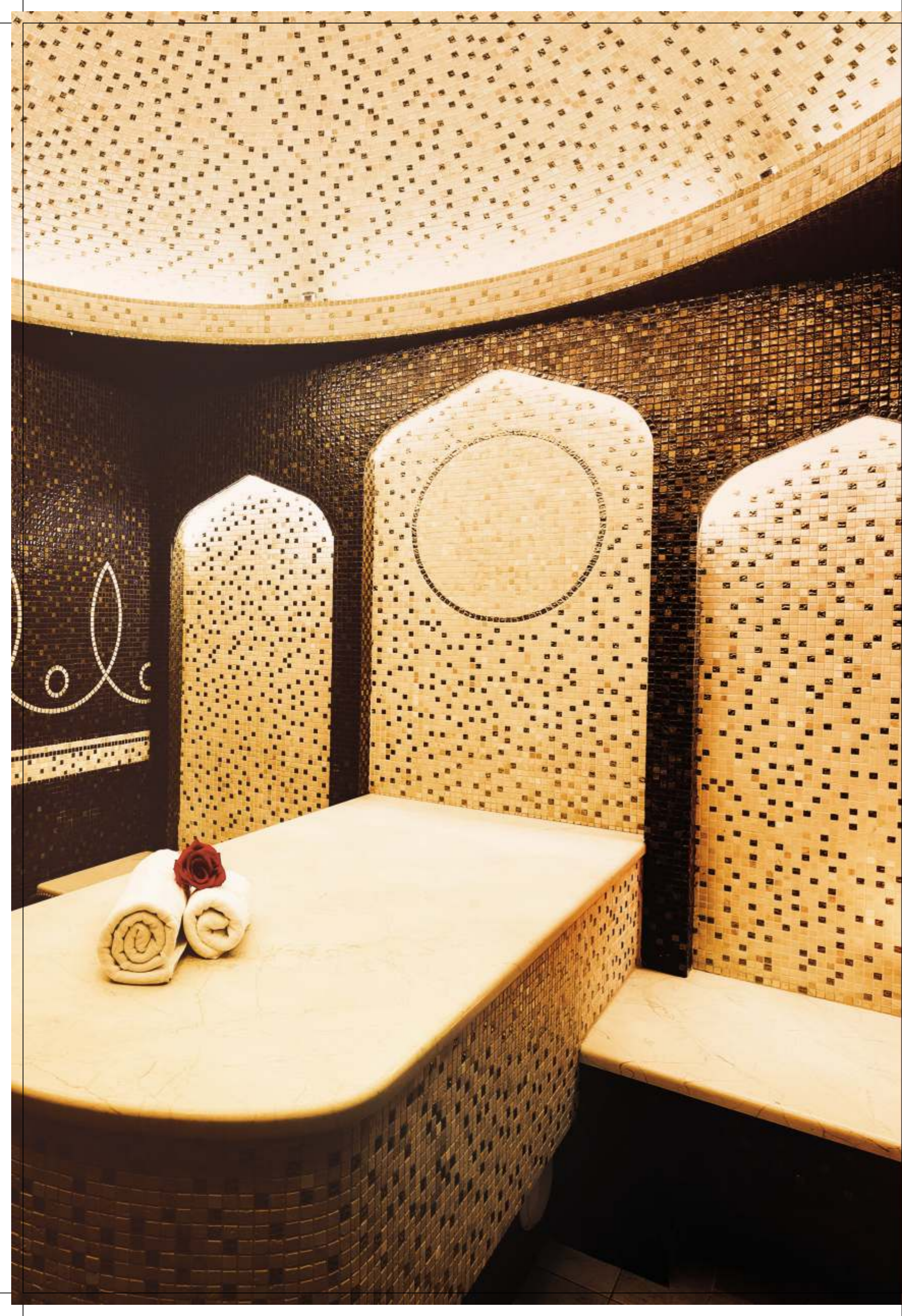


**LIFE IS A JOURNEY
TOWARDS HAPPINESS,
LET'S ENJOY IT
EVERY MOMENT.**



**EXOTIC CLUB LIFE EXPERIENCES
WITH PLENTIFUL INDULGENCES**





**INHALE THE HAPPINESS,
EXHALE THE STRESS AND
LET THE
REJUVENATION BEGIN.**

RECREATION AND REJUVENATION FEATURES

YOGA AND MEDITATION CENTRE

REFRESHING SWIMMING POOL WITH SEPARATE KIDS POOL

UNISEX AROMA SPA WITH JACUZZI

AEROBICS CENTRE

HI-TECH GYMNASIUM



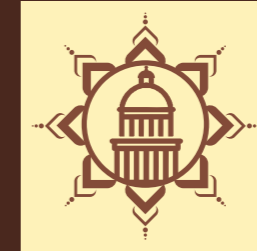
**STRIKE THE STRESS,
SCORE THE SMILES AND
WIN THE HEARTS OF
YOUR LOVED ONES.**

INDOOR SPORTS ARENA

INDOOR SPORTS CLUB WITH CHESS, BILLIARDS & CARDS ROOM

BADMINTON & SQUASH COURT





**SPEND SOME TIME
DOING YOUR
FAVOURITE THINGS.**

ENTERTAINMENT & KNOWLEDGE CENTRE

MINI THEATRE

LIBRARY WITH VARIED COLLECTION OF ENCYCLOPAEDIA

BUSINESS LOUNGE WITH WI-FI CONNECTIVITY

**CELEBRATE YOUR DAYS
AT A WORLD OF
HOLISTIC HEALTH
AND WELLNESS.**



**DESIGNER LANDSCAPES
INSPIRED BY PERSIAN LANDSCAPING**



**EACH DAY BRINGS
MANY SURPRISES,
HERE WE MAKE THEM
AWE-INSPIRING.**

PLAY AREA & ENTERTAINMENT CENTRE

CHILDREN'S OUTDOOR PLAY AREA

RAIN DANCE ARENA WITH WATER FOUNTAIN



**STUDY NATURE,
STAY CLOSE TO THE LIFE,
AND INTRODUCE
YOURSELF TO THE NEW YOU.**

SERENE LANDSCAPES

PAIRI DAEZA - THE PERSIAN GARDEN WITH SIT-OUTS

DESIGNER LANDSCAPED GARDEN WITH
HERBAL BOULEVARD & ZEN GARDEN

LANDSCAPED PARTY AREA

SENIOR CITIZEN'S GARDEN WITH PERGOLA SIT-OUTS

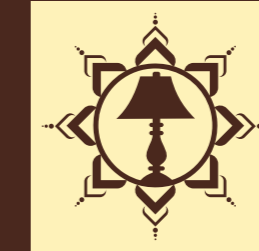


**EXPERIENCE GRANDNESS OF
PERSIAN ARCHITECTURE WITH
BEST-IN-CLASS AMENITIES.**



LUXURIOUS APARTMENT FEATURES





A GRAND LIFE OF ROYAL EXPERIENCES AND ULTRAMODERN LUXURIES WELCOMES YOU.

LUXURIOUS APARTMENT FEATURES

VITRIFIED TILE FLOORING IN ALL ROOMS (800 MM X 800 MM)

MODERN KITCHEN WITH WATER PURIFIER GAS HOB & CHIMNEY

GRANITE TOP KITCHEN PLATFORM WITH DOUBLE BOWL SINK AND SERVICE PLATFORM WITH FULL HEIGHT TILES UPTO BEAM LEVEL

BATHROOM WITH BATHTUB, BASIN COUNTER, GLASS PARTITION, PREMIUM QUALITY CP FITTINGS AND BRANDED SANITARY WARE

MOULDED PANEL MAIN DOOR AND BATHROOM DOOR

FRP DOORS FOR BATHROOMS

UPVC SOUND RESISTANCE FRENCH WINDOWS

LUSTER/VELVET TOUCH PAINT WITH POP ON ALL WALLS



**ELEVATE YOUR
PRESENT DAY LIFE WITH
FUTURISTIC INDULGENCES
AND FACILITIES.**



**ULTRAMODERN TOWER FEATURES
& UTILITIES**



**LET YOUR LIFESTYLE MAKE AN
EVERLASTING IMPRESSION
ON YOUR GUESTS.**

ULTRAMODERN TOWER FEATURES

HI-SPEED ELEVATORS

24X7 VIGILANT SECURITY SYSTEM

VIDEO DOOR SECURITY SYSTEM

5 LEVEL CAR PARKING

INNOVATIVE FIRE ESCAPE CHUTE FOR SELF-EVACUATION

CHILDREN'S CRÈCHE



Artist's Impression

ARIHANT CLAN AALISHAN AT A GLANCE

PROJECT HALLMARKS

BIG-SIZED STUDIO, 2, 3 & 4 BHK RESIDENCES

3 MAGNIFICENT TOWERS - ZEENAT, BARAZ AND KAVEH

DOUBLE HEIGHT ENTRANCE LOBBY INSPIRED BY PERSIAN ARCHITECTURE

THE KOLUP - GRAND CLUB INSPIRED BY THE PERSIAN LUXURY

PROPOSED SUPERMARKET WITHIN THE PREMISES

LOCATION ADVANTAGES

LOCATED AMIDST THE GREEN AND SERENE ENVIRONS

UPCOMING NAVI MUMBAI CORPORATE PARK - 1.5 KMS.

KHARGHAR VALLEY GOLF COURSE - 2 KMS.

SECTOR 35, METRO STATION - 0.5 KMS.

CENTRAL PARK - 2 KMS.

ENTERTAINMENT CENTRES LIKE 'UTSAV CHOWK' AND 'SHILP CHOWK' NEARBY

REPUTED EDUCATIONAL INSTITUTES IN CLOSE PROXIMITY

CONNECTED WITH THE MUMBAI-PUNE HIGHWAY

MARKET AREAS AND OTHER CONVENIENCES LIKE MALLS, MULTIPLEXES, KHARGHAR RAILWAY STATION,
ETC. AT A SHORT DISTANCE

STATE-OF-THE-ART CLUBHOUSE

RECREATION AND REJUVENATION FEATURES

YOGA AND MEDITATION CENTRE

REFRESHING SWIMMING POOL WITH SEPARATE KIDS POOL

UNISEX AROMA SPA WITH JACUZZI

AEROBICS CENTRE

HI-TECH GYMNASIUM

INDOOR SPORTS ARENA

INDOOR SPORTS CLUB WITH CHESS, BILLIARDS & CARDS ROOM

BADMINTON & SQUASH COURT

ENTERTAINMENT & KNOWLEDGE CENTRE

MINI THEATRE

LIBRARY WITH VARIED COLLECTION OF ENCYCLOPAEDIA

BUSINESS LOUNGE WITH WI-FI CONNECTIVITY

DESIGNER LANDSCAPES INSPIRED BY PERSIAN LANDSCAPING

PLAY AREA & ENTERTAINMENT CENTRE

CHILDREN'S OUTDOOR PLAY AREA

RAIN DANCE ARENA WITH WATER FOUNTAIN

SERENE LANDSCAPES

PAIRI DAEZA - THE PERSIAN GARDEN WITH SIT-OUTS

DESIGNER LANDSCAPED GARDEN WITH HERBAL BOULEVARD & ZEN GARDEN

LANDSCAPED PARTY AREA

SENIOR CITIZEN'S GARDEN WITH PERGOLA SIT-OUTS

LUXURIOUS APARTMENT FEATURES

VITRIFIED TILE FLOORING IN ALL ROOMS (800 MM X 800 MM)

MODERN KITCHEN WITH WATER PURIFIER, GAS HOB & CHIMNEY

GRANITE TOP KITCHEN PLATFORM WITH DOUBLE BOWL SINK AND

SERVICE PLATFORM WITH FULL HEIGHT TILES UP TO BEAM LEVEL

BATHROOM WITH BATHTUB, BASIN COUNTER, GLASS PARTITION,

PREMIUM QUALITY CP FITTINGS AND BRANDED SANITARY WARE

MOULDED PANEL MAIN DOOR AND BATHROOM DOOR

FRP DOORS FOR BATHROOMS

UPVC SOUND RESISTANCE FRENCH WINDOWS

LUSTRE/VELVET TOUCH PAINT WITH POP ON ALL WALLS

ULTRAMODERN TOWER FEATURES & UTILITIES

HI-SPEED ELEVATORS

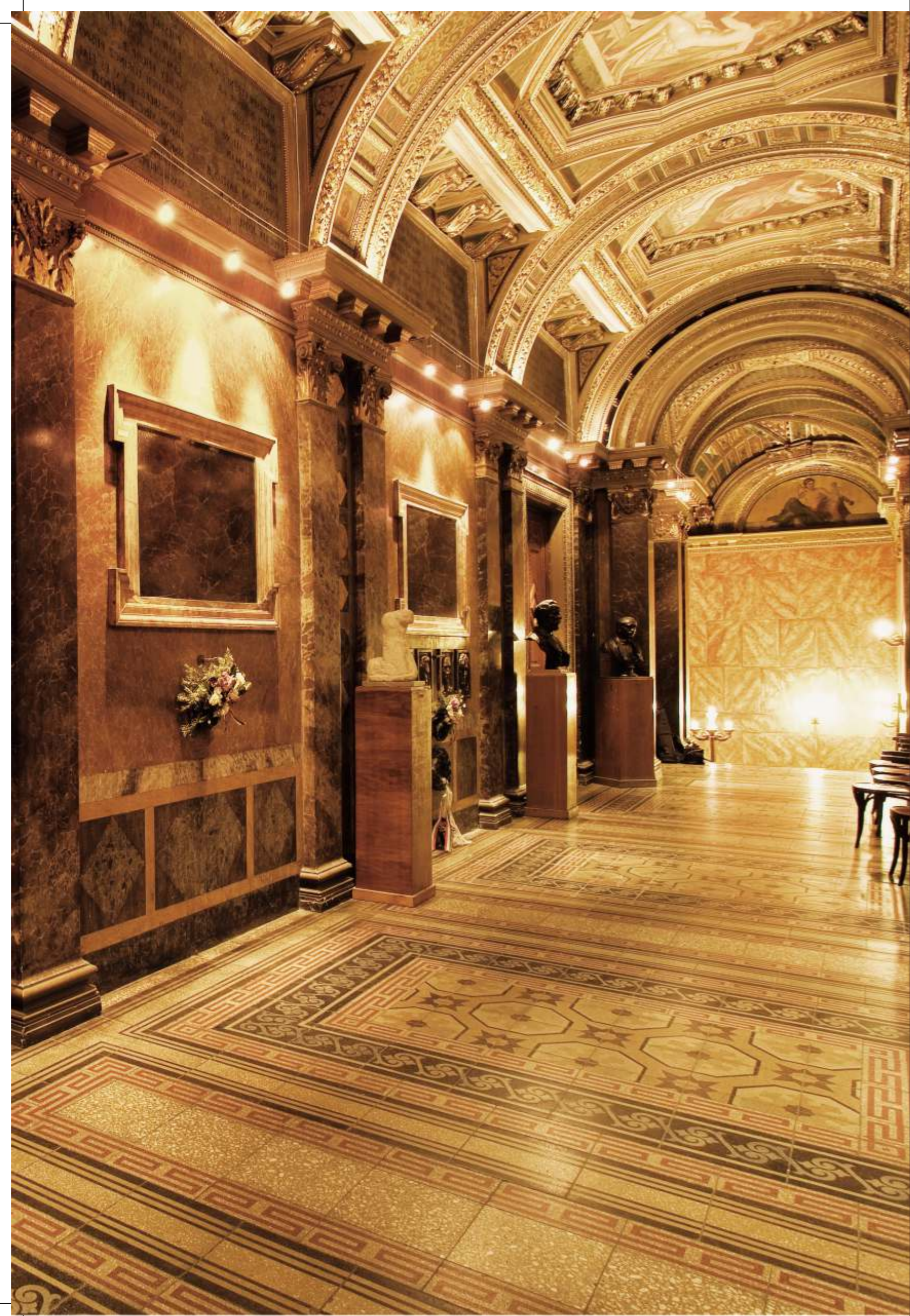
24X7 VIGILANT SECURITY SYSTEM

VIDEO DOOR SECURITY SYSTEM

5 LEVEL CAR PARKING

INNOVATIVE FIRE ESCAPE CHUTE FOR SELF-EVACUATION

CHILDREN'S CRÈCHE



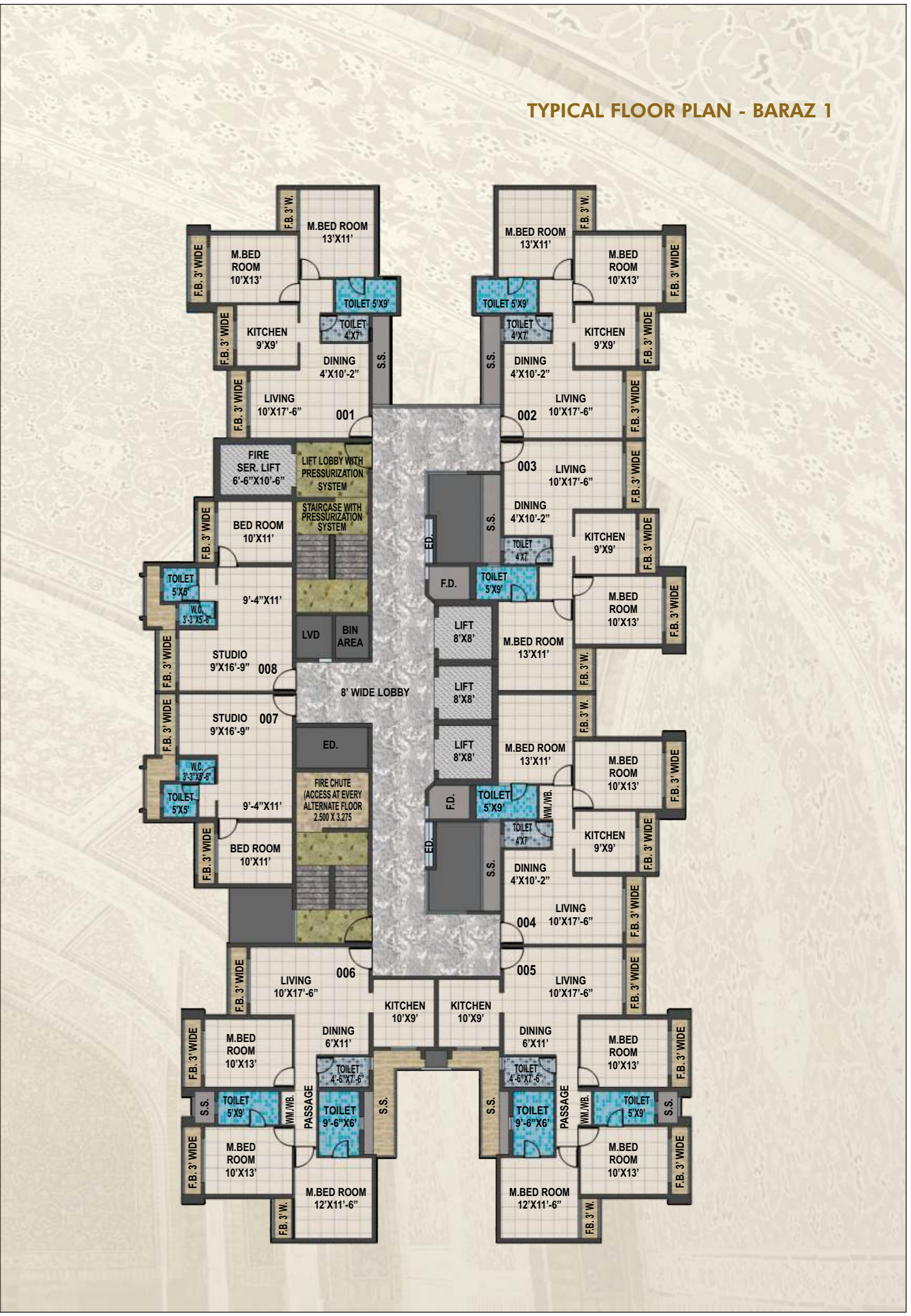
**EXPERIENCE PERSIAN ARCHITECTURE
INSPIRED RESIDENCES,
PLANNED IN A VERY MODERN
& UNIQUE WAY.**

FLOOR PLAN

MASTER LAYOUT PLAN



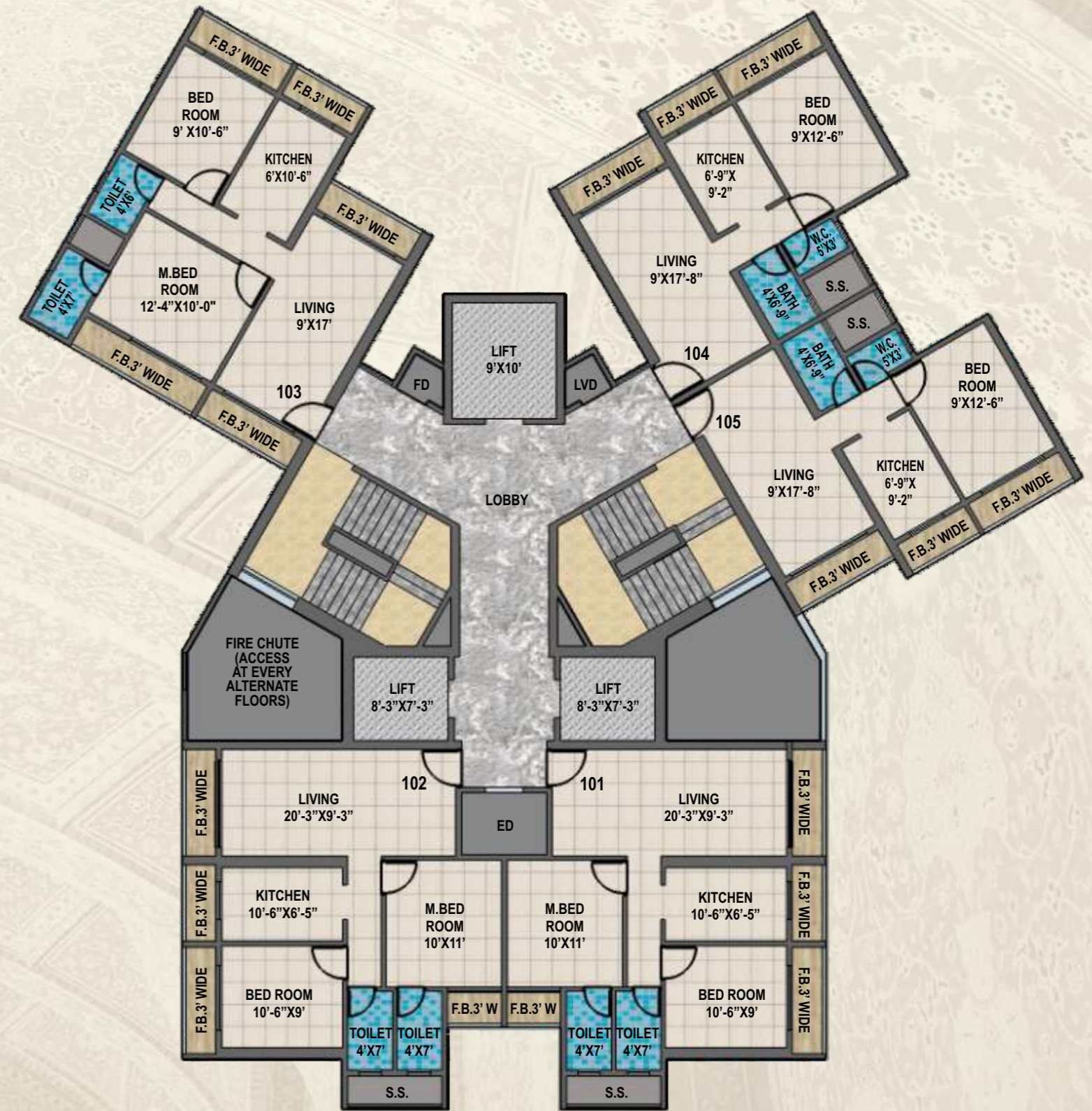
TYPICAL FLOOR PLAN - BARAZ 1



TYPICAL FLOOR PLAN - ZEENAT



TYPICAL FLOOR PLAN - KAVEH



1 BHK FLAT LAYOUT PLAN WITH FURNITURE - KAVEH



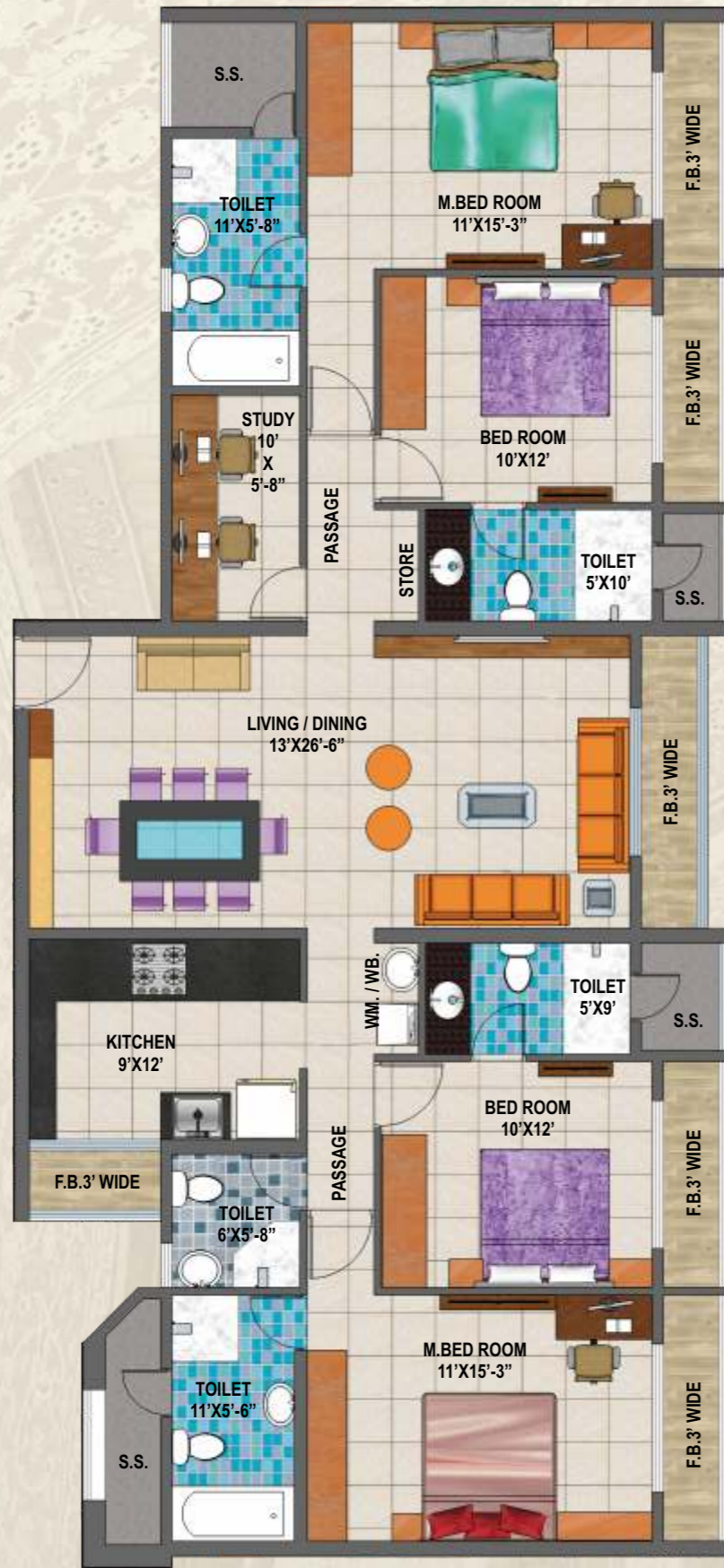
2 BHK FLAT LAYOUT PLAN WITH FURNITURE - KAVEH



2 BHK FLAT, TYPE 2, LAYOUT PLAN WITH FURNITURE - KAVEH



4 BHK FLAT LAYOUT PLAN WITH FURNITURE - ZEENAT



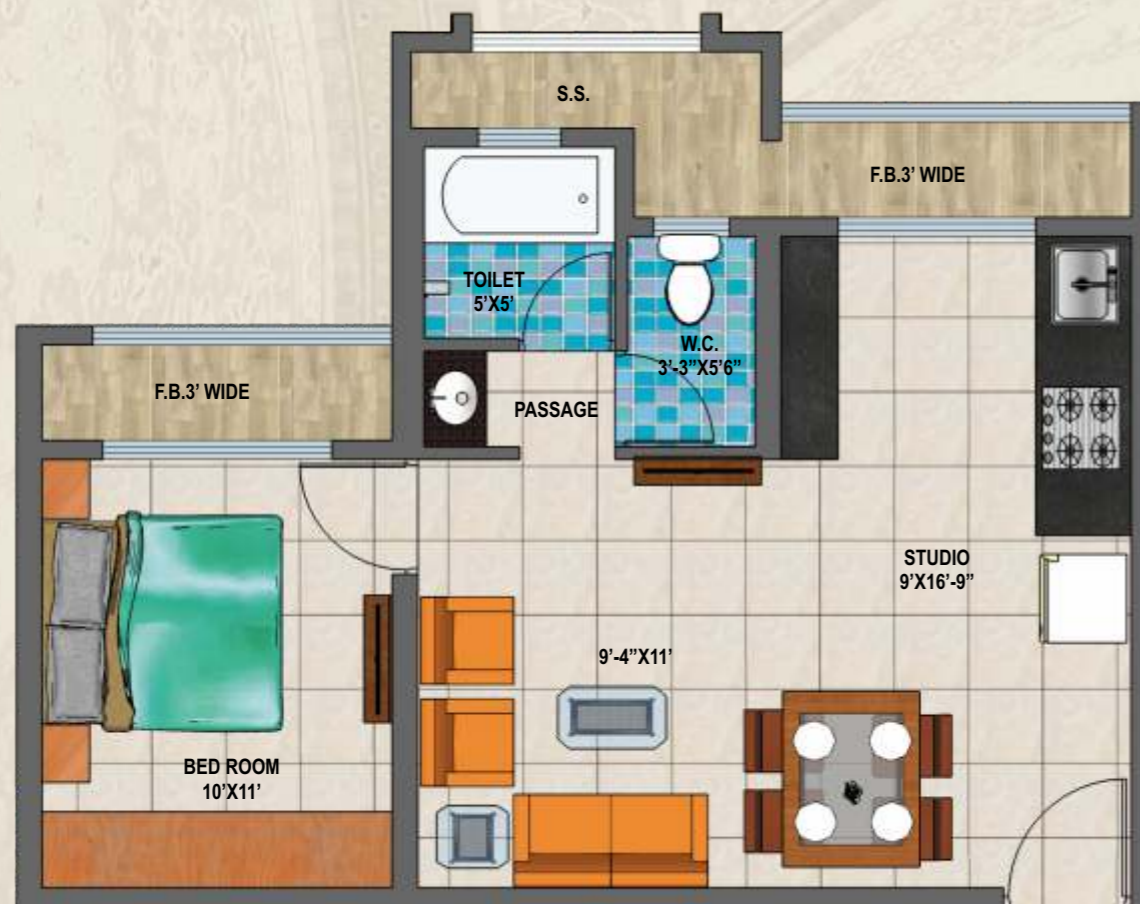
3 BHK FLAT LAYOUT PLAN WITH FURNITURE - BARAZ



2 BHK FLAT LAYOUT PLAN WITH FURNITURE - BARAZ



STUDIO APARTMENTS LAYOUT PLAN WITH FURNITURE - BARAZ



OUR OTHER PROJECTS

ARIHANT AAROHI

Kalyan - Shil Road
1 & 2 BHK - 194 Flats

ARIHANT ANMOL

Badlapur (E)
1 & 2 BHK - 665 Flats

ARIHANT ARSHIYA

Khopoli - Nr. Khalapur Toll Naka
1, 2 & 3 BHK - 1605 Flats

ARIHANT AMISHA

Taloja - Nr. Panvel
1 & 2 BHK - 456 Flats

ARIHANT ANSHULA

Nr. Taloja Phase II, Navi Mumbai
1, 2 & 3 BHK - 488 Flats

ARIHANT ANAIKA

Nr. Taloja Phase II, Navi Mumbai
1, 2 & 3 BHK - 316 Flats

ARIHANT AMODINI

Kharghar Extension - Taloja
2 BHK - 126 Flats

ARIHANT AKANKSHA

Palaspe - Panvel
Studio Apts, 2, 3 & 4 BHK - 2018 Flats