

Godrej | PROPERTIES



GODREJ INFINITY

KESHAVNAGAR, PUNE

IN PARTNERSHIP WITH

OXFORD GROUP
A Promise!



LIVE A PRIVILEGED LIFE AT **KESHAVNAGAR, PUNE**

Where dreams take the front seat.
Where pampering yourself doesn't call for an occasion.
Where, smart living ensures peace of mind.

Welcome to a world of Privileged Living. Welcome to Godrej Infinity.



GODREJ INFINITY

KESHAVNAGAR, PUNE

PHASE – 1

- PRE-LAUNCHED IN 2015
- CHOSEN BY 500 FAMILIES AS THEIR DREAM HOME
- ALL PROJECT APPROVALS RECEIVED
- CONSTRUCTION TO BEGIN IN MAY 2016

NOW ANNOUNCING

PHASE 2

WITH AN ENHANCED LIFESTYLE
AND PRIVILEGED LIVING

GODREJ INFINITY AT A GLANCE



LIFESTYLE OF
CONVENIENCE

A strategic location that lets you reach anywhere in the city with ease.



PRIVILEGED
LIVING

Homes that exude elegance and freshness.



LIFESTYLE
PARTNERS

Privileges that offer delightful experiences.



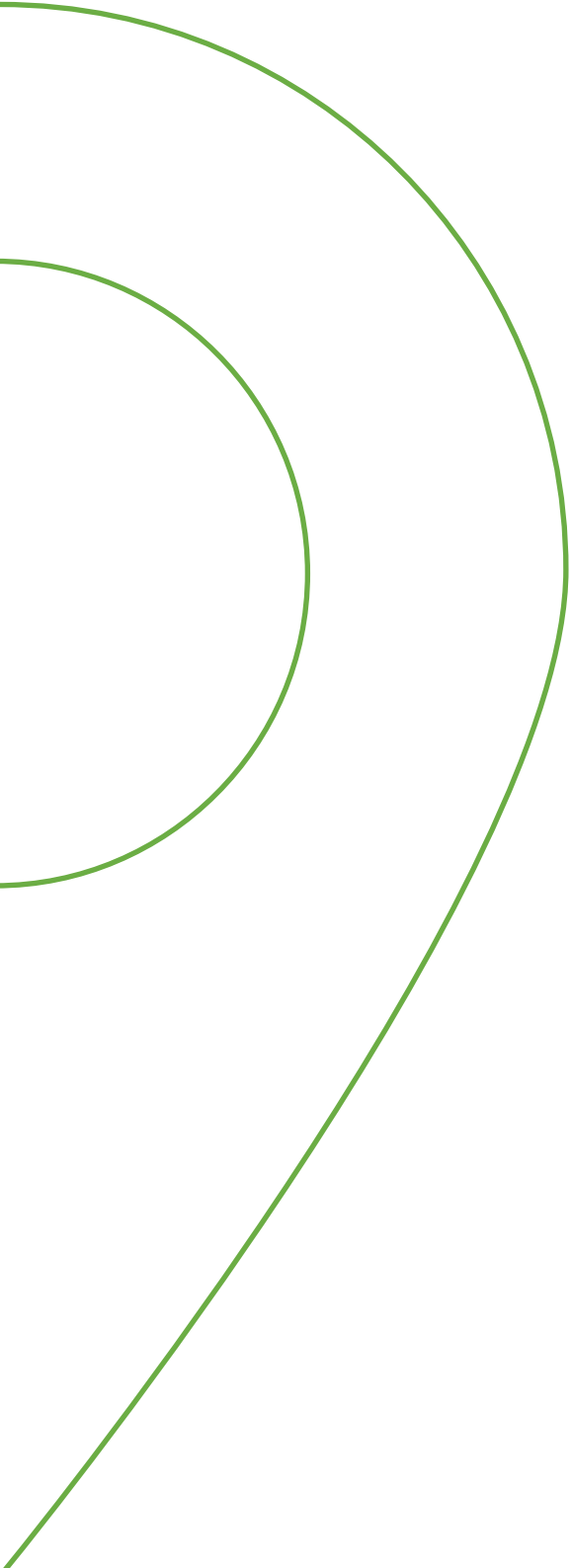
RELAXING
GREENS

Resplendent greenery spread over 2 acres.



PERFECT
CLUB LIFE

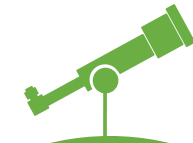
A state-of-the-art clubhouse with all facilities under one roof.



LIFESTYLE OF **CONVENIENCE**

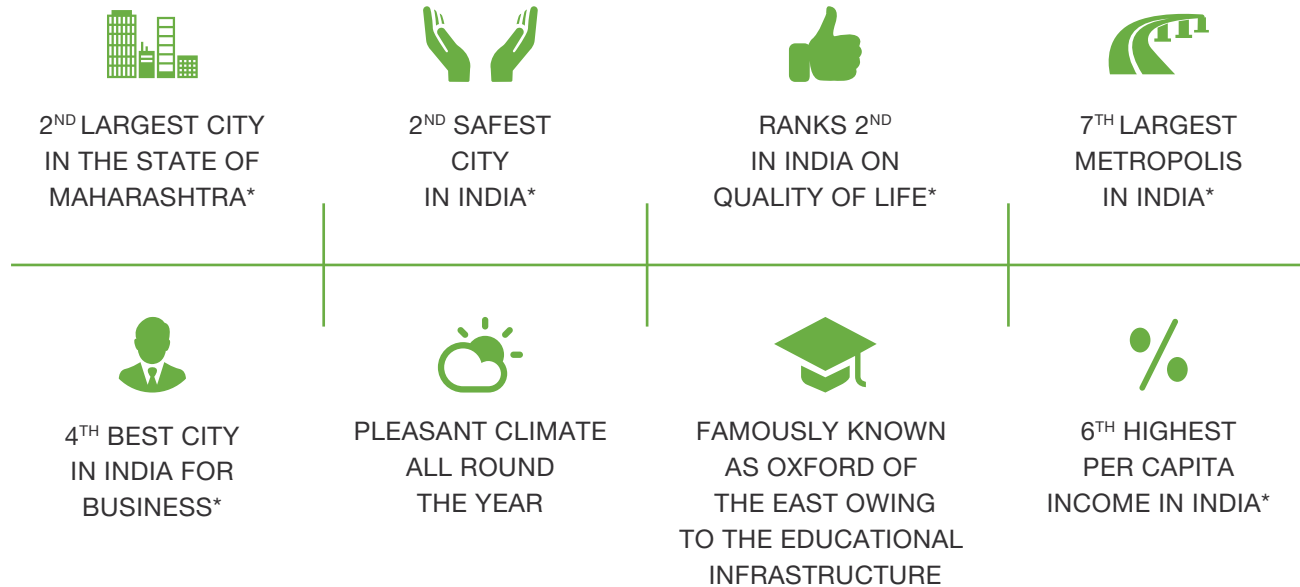
PUNE - THE SMART CITY WITH A SMART LIFE

Pune, one of the major cities of Maharashtra State has seen manifold growth in recent years. From a quiet city to a rapidly growing IT hub of Western India, Pune has transformed itself into the most lucrative destination when it comes to real estate and investment.



SMART VISION
—
TO MAKE PUNE
THE MOST LIVEABLE
CITY IN INDIA

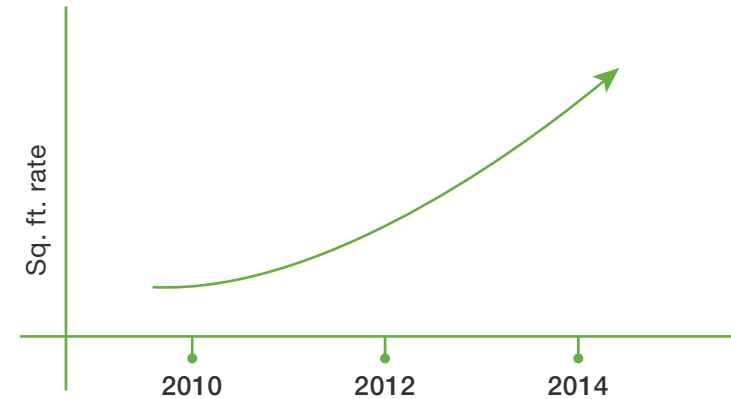
THE ADDRESS OF A GROWING FUTURE



*Sources: Please refer to page no. 33

COME TO THE GROWTH CENTER IN **PUNE- KESHAVNAGAR**


Keshavnagar is today one of the most rapidly developing destinations in Pune. Located by the Mula Mutha River, Keshavnagar has seen exponential growth since its initial years of development. Moreover, the upcoming bridge that is sanctioned to be built over the Mula-Mutha river will connect Keshavnagar to Kharadi. This will help in creating great demand for housing in Keshavnagar and make it the best choice for investment in today's scenario.




LOCATION MAP – KESHAVNAGAR, PUNE


A serene and growing locality in Pune, Keshavnagar promises excellent connectivity.




-  EDUCATIONAL INSTITUTES
 - Orbis School – 1.5 Kms
 - Serra International Pre-school – 3.1 Kms
 - Eon Gyanankur School – 4.5 Kms
 - Pharmacy College – 5 Kms

-  IT / COMMERCIAL
 - Eon IT Park – 3.5 Kms
 - World Trade Centre – 3.5 Kms
 - Zensar IT Park – 3.5 Kms
 - Magarpatta IT Park – 3.5 Kms

-  HOSPITAL
 - Columbia Asia Hospital – 3 Kms
 - Rakshak Hospital – 5 Kms
 - Noble Hospital - 6 Kms
 - Sahyadri Hospital - 6 Kms

-  SHOPPING MALL
 - Amanora Town Centre – 3 Kms
 - Seasons Mall – 3 Kms
 - Nitesh Hub - 4.5 Kms
 - Inorbhit Mall - 6.5 Kms
 - Phoenix Market City – 7 Kms

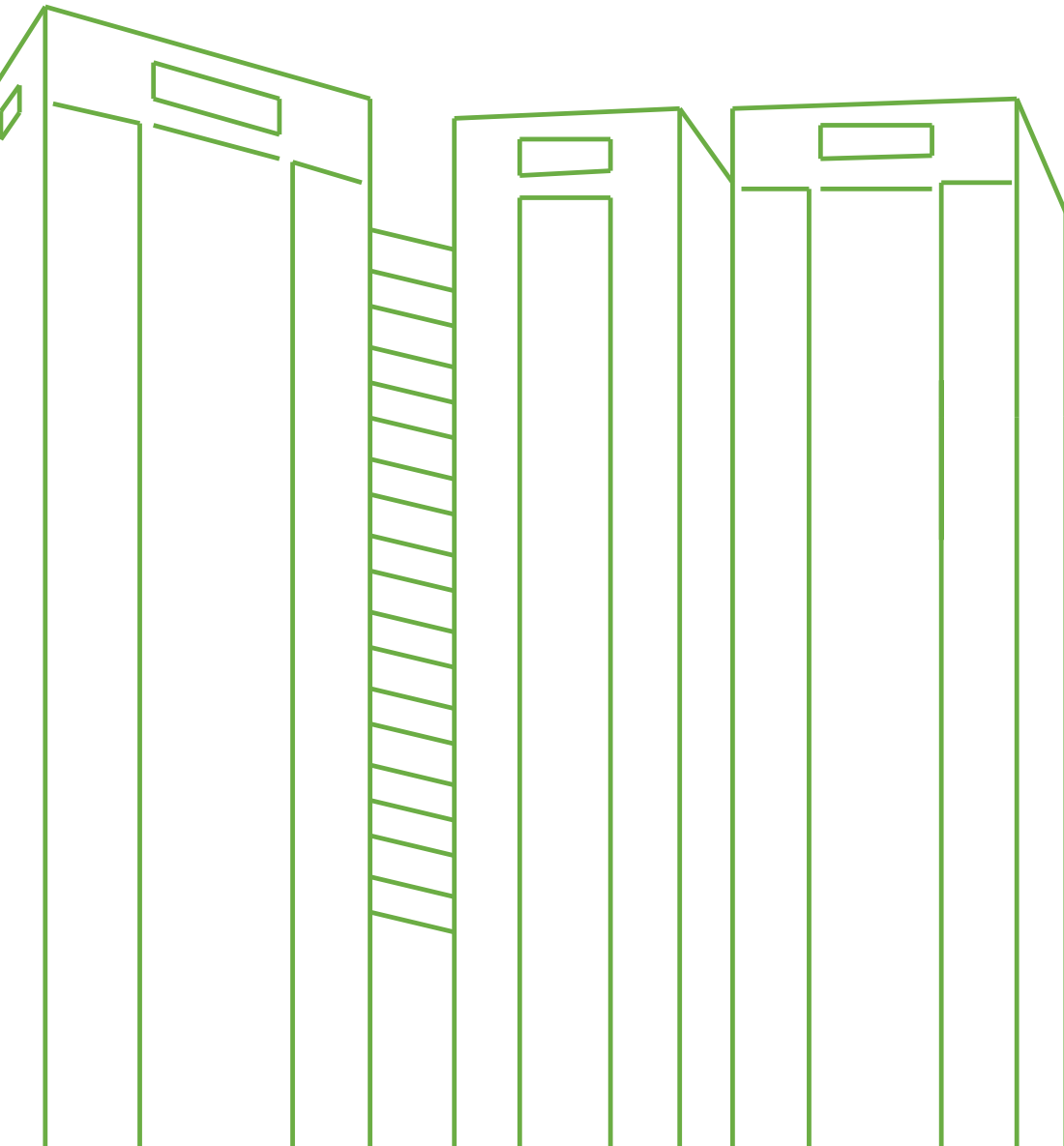
 **SANCTIONED BRIDGE ON MULA MUTHA RIVER THAT CONNECTS KESHAVNAGAR TO KHARADI**

-  HOTELS
 - Radisson Hotel – 3.5 Kms | Westin Hotel - 4.5 Kms

 PUNE RAILWAY STATION - 8.5 Kms

 PUNE INTERNATIONAL AIRPORT - 10.5 Kms

- KHARADI - 3.5 Kms
- MAGARPATTA CITY - 3.5 Kms
- KALYANI NAGAR - 5 Kms
- KOREGAON PARK - 5.5 Kms
- HADAPSAR - 6 Kms



PRIVILEGED **LIVING**

NOW ANNOUNCING, **PHASE 2 AT GODREJ INFINITY**



PRIVILEGED LIVING AT GODREJ INFINITY - PHASE 2



SIGNATURE TOWER

- 28 storied tallest tower in Godrej Infinity
- 270 degree view
- 3 BHK signature air-conditioned homes
- Exclusive Club Concierge services
- Smart homes with home automation
- Modular kitchen with cabinets
- Kitchen chimney
- Kitchen hob
- Luxurious washroom with Jaquar shower panel
- Laminated wooden flooring in master bedroom
- Italian marble flooring in living room & kitchen
- Power back up through inverter
- Piped gas connection
- RO water purifier
- Solar water heating system

Configuration: (Carpet area)
3 BHK 1025-1109 sq.ft



ETERNITY TOWER

- 2 BHK premium air-conditioned homes
- Smart homes with home automation
- Modular kitchen with cabinets
- Kitchen chimney
- Kitchen hob
- Power back up through inverter
- Piped gas connection
- RO water purifier
- Solar water heating system

Configuration: (Carpet area)
2 BHK 806-866 sq.ft.

NOW ELEVATE YOUR LIFESTYLE WITH SPA, SPORTS ACADEMY AND CLUB CONCIERGE AT YOUR DOORSTEP

ELEGANT SPACES WITH **SMART LIVING**

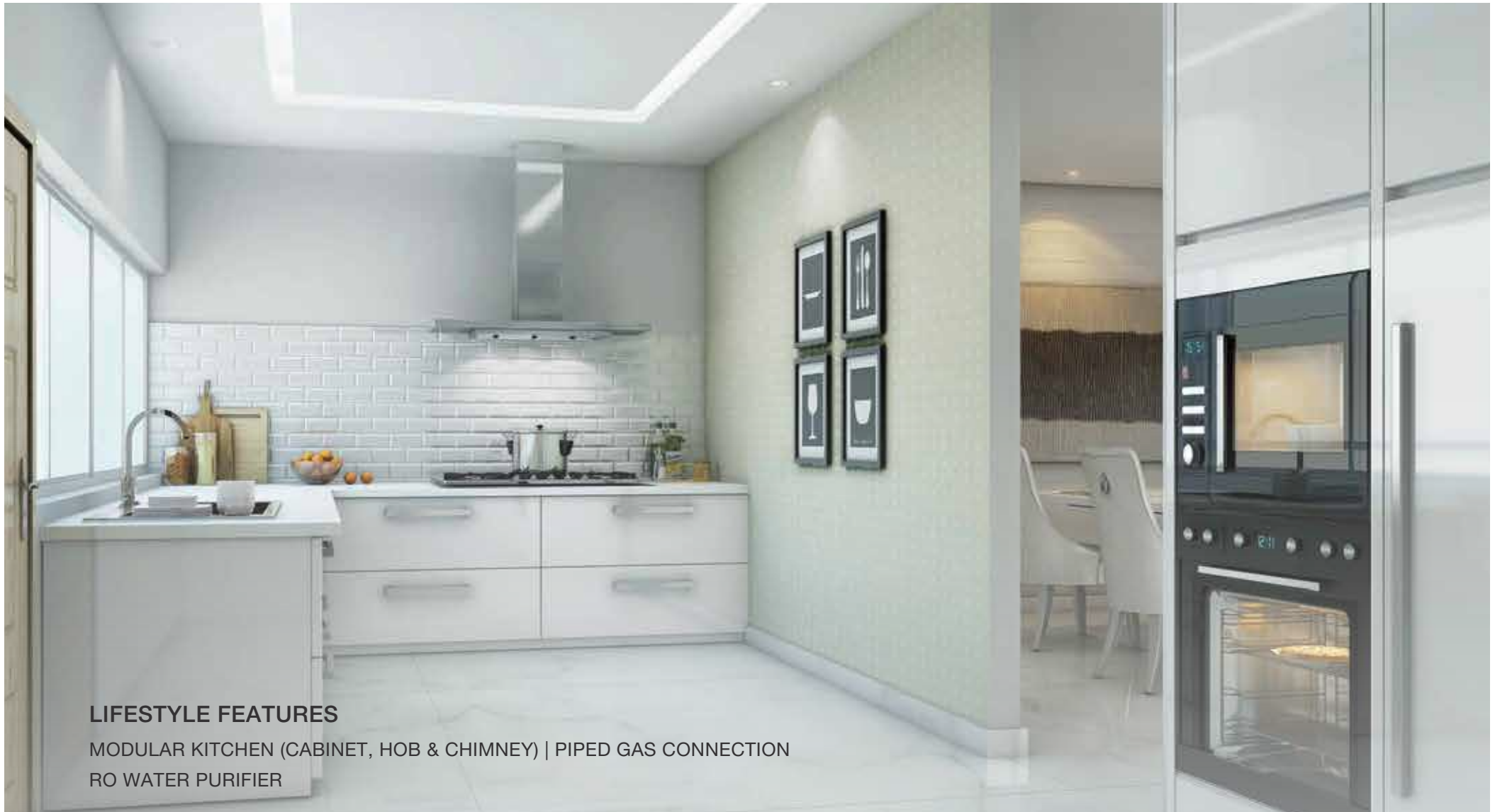


LIFESTYLE FEATURES

ITALIAN MARBLE FLOORING IN LIVING ROOM (SIGNATURE TOWER)

AIR-CONDITIONED HOMES | HOME AUTOMATION | POWER BACK-UP THROUGH INVERTER | VIDEO DOOR PHONE

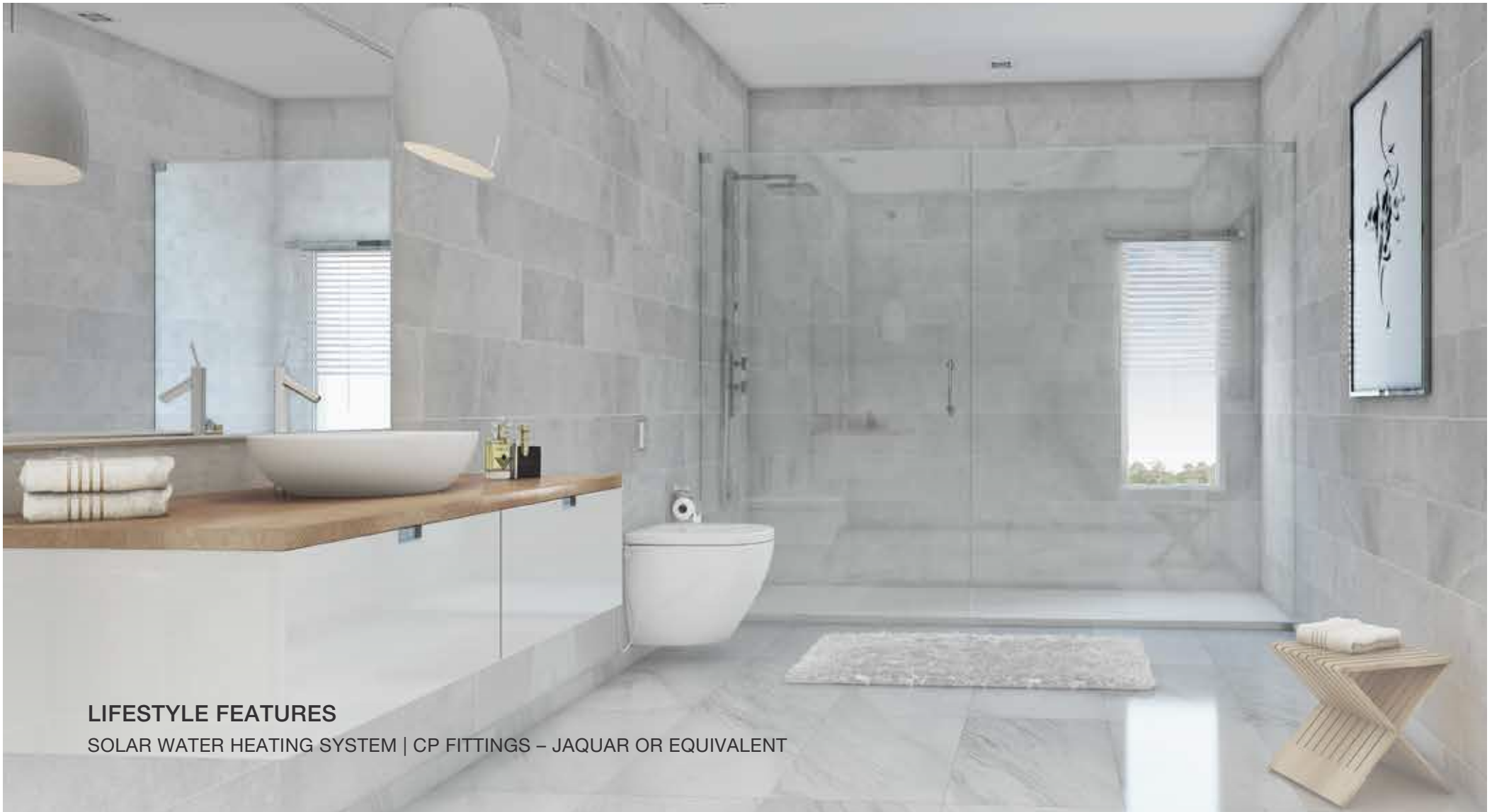
A PERFECT PLACE FOR **THE BUDDING MASTERCHEF IN YOU**



LIFESTYLE FEATURES

MODULAR KITCHEN (CABINET, HOB & CHIMNEY) | PIPED GAS CONNECTION
RO WATER PURIFIER

DESIGNER BATHROOM FOR **A FRESH NEW START OF THE DAY**



LIFESTYLE FEATURES

SOLAR WATER HEATING SYSTEM | CP FITTINGS – JAQUAR OR EQUIVALENT

A PERSONAL SPACE THAT OFFERS **THE PERFECT COMFORT**



LIFESTYLE FEATURES

LAMINATED WOODEN FLOORING (SIGNATURE TOWER) | AIR-CONDITIONED HOMES
HOME AUTOMATION | UPVC WINDOW WITH MOSQUITO NET

MASTER LAYOUT PLAN



- 01 Club House
- 02 Outdoor Yoga Meditation Zone
- 03 Jogging Track / Walking Track
- 04 Children's Play Area
- 05 Outdoor sit-outs
- 06 Tennis Court
- 07 Acupressure Walkways
- 08 Senior Citizens Zone
- 09 Cycle Track
- 10 Amphitheatre
- 11 Swimming Pool
- 12 Kids Pool
- 13 Party Lawn
- 14 Pavilion
- 15 Water Body
- 16 Sand Pit
- 17 Party Deck
- 18 Community Greens
- 19 Convenient Shopping
- 20 Outdoor Board Games

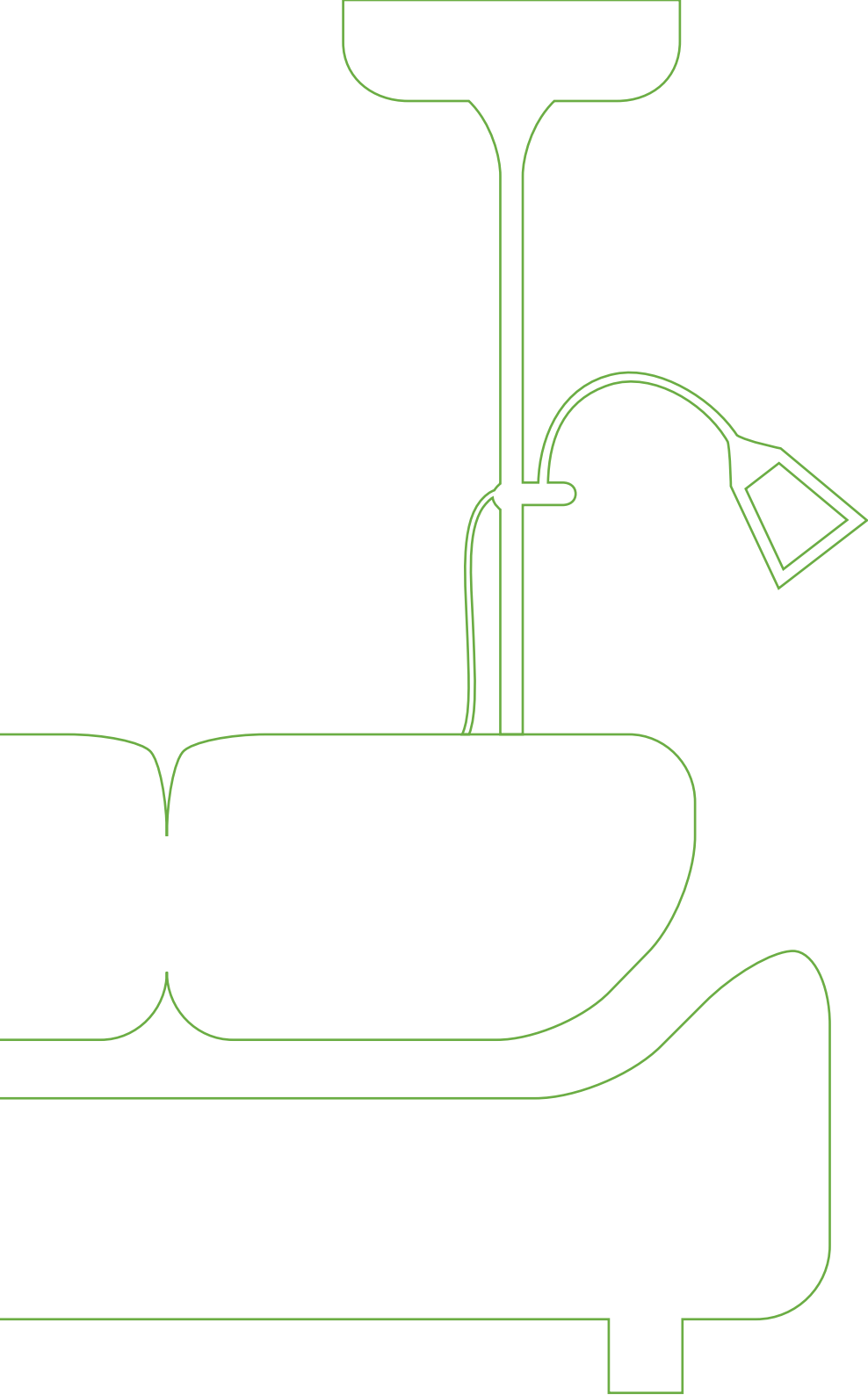
43 acre residential development | Grand entry through 6 lane boulevard | More than 50% green and open spaces
 Clubhouse with unique design and roof top greens | IGBC Silver – Green Pre-certified

MASTER LAYOUT PLAN (PHASE 1 & 2)



- 01 Club House
- 02 Outdoor Yoga Meditation Zone
- 03 Jogging Track / Walking Track
- 04 Children's Play Area
- 05 Outdoor sit-outs
- 06 Tennis Court
- 07 Acupressure Walkways
- 08 Senior Citizens Zone
- 09 Cycle Track
- 10 Amphitheatre
- 11 Swimming Pool
- 12 Kids Pool
- 13 Party Lawn
- 14 Pavilion
- 15 Water Body
- 16 Sand Pit
- 17 Party Deck
- 18 Community Greens
- 19 Convenient Shopping
- 20 Outdoor Board Games

Phase 2
Tower 1 - Signature
Tower 3 - Eternity



LIFESTYLE **PARTNERS**

EXPERT GUIDANCE FOR YOUR **PASSION IN SPORTS**



SPORTS PRO ACADEMY BY DEAN GILCHRIST

Sportspro is an Australian, family owned company that was founded in 1995 by Managing Director, Mr. Dean Gilchrist (elder brother of Adam Gilchrist). Certified trainers along with state-of-the-art training methodologies will help you and your family enjoy various sports and maintain a healthy lifestyle.



PAMPERING THAT **WAS NEVER SO REFRESHING**



FOUR FOUNTAINS SPA

Luxury spa service at your convenience to refresh and rejuvenate your senses.

A PRIVILEGED LIFE **AT YOUR BECK AND CALL**



CLUB CONCIERGE SERVICE

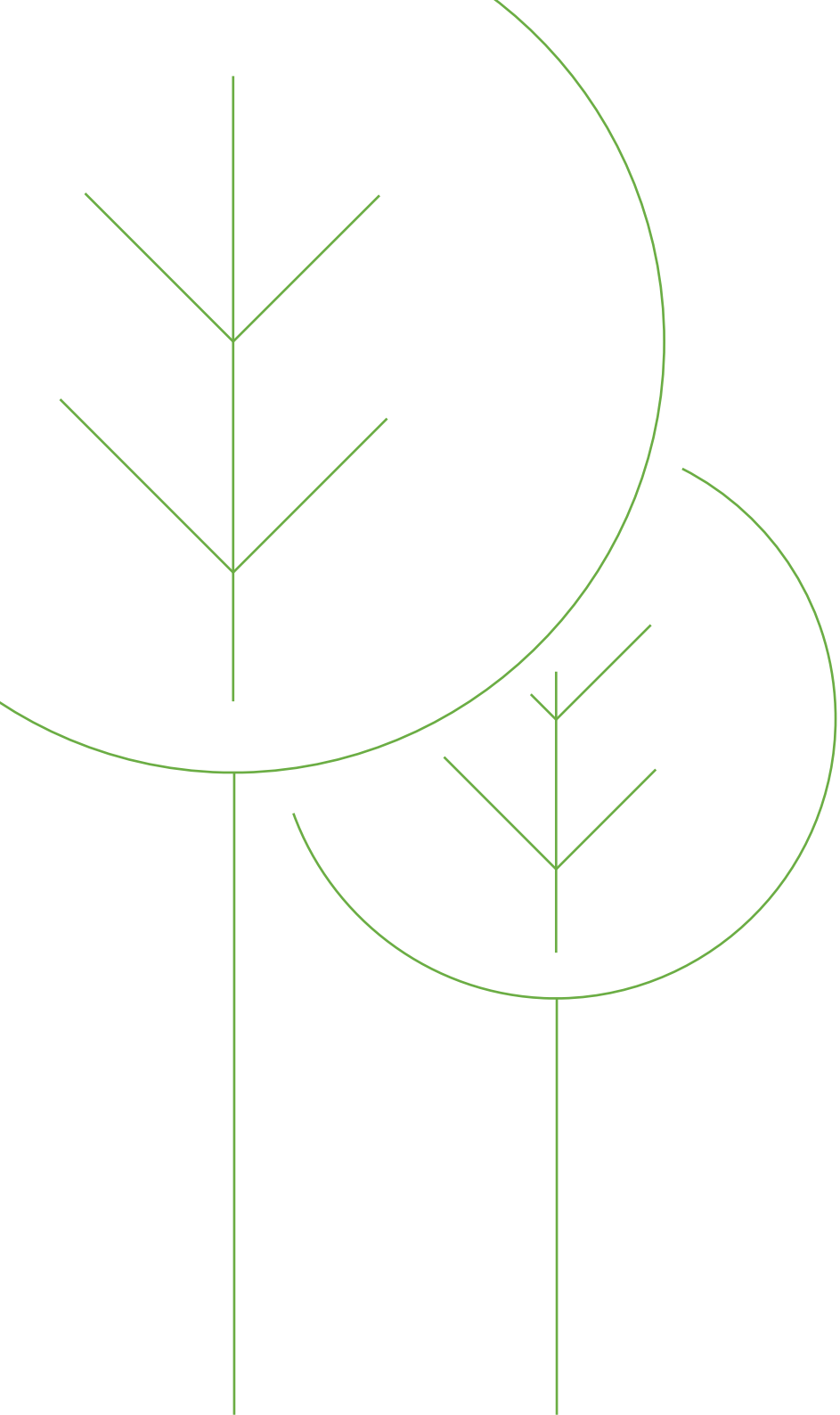
Charter a plane or go yachting, surprise your beloved anytime you choose – think and it will be done. At Godrej Infinity, enjoy infinite privileges with Club Concierge and turn your every aspiration into an experience.

HOME AUTOMATION

A revolutionary way of controlling your lights, fans, Ac's and other appliances from anywhere in the world.

Imagine a home where you always enter a pre-cooled room in summers, and a home where you never fret about leaving something switched on.

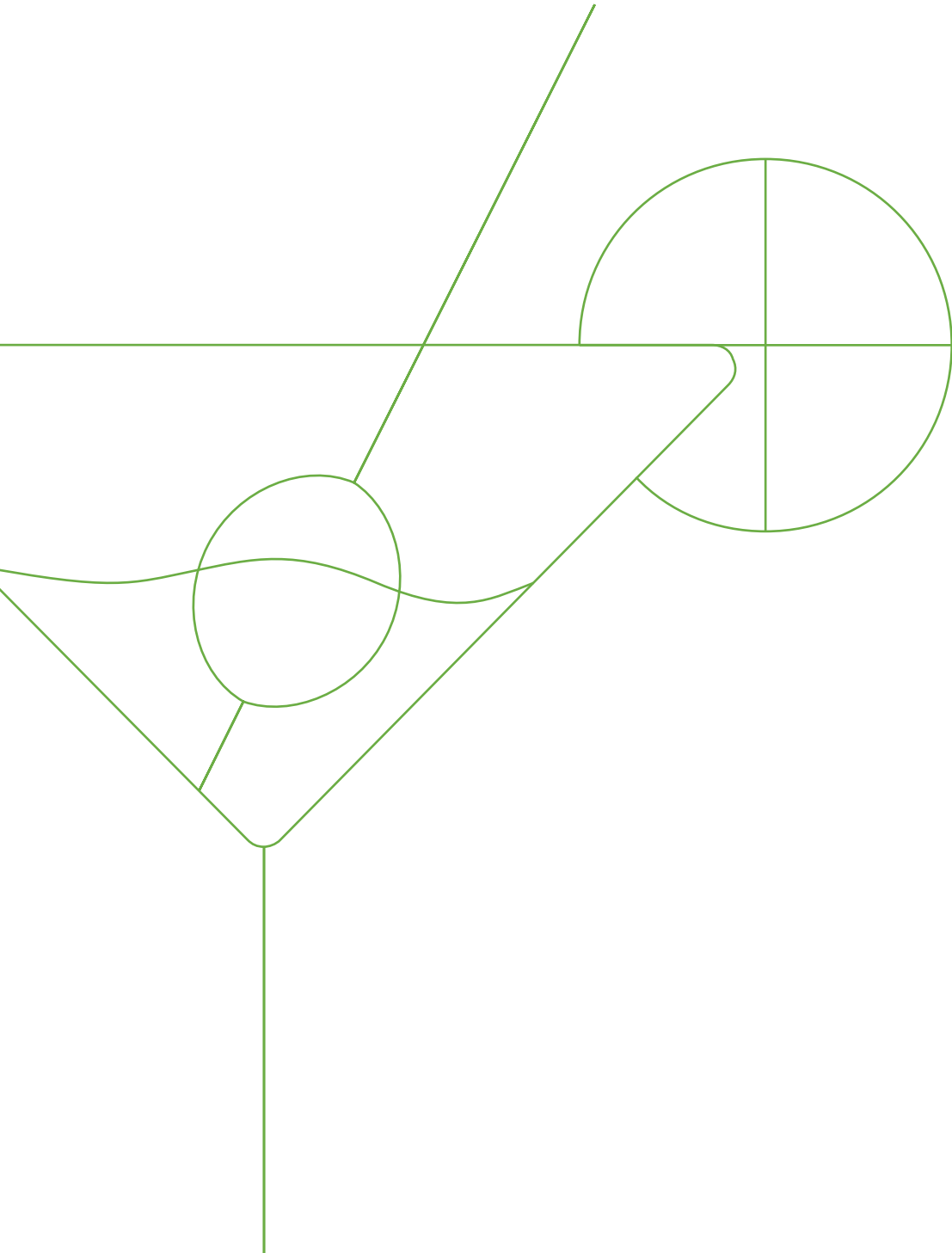




RELAXING **GREENS**

CENTRAL GREENS OVER 2 ACRES
THAT INSPIRES **A HEALTHY LIFE**





PERFECT **CLUB LIFE**

A STATE-OF-THE-ART CLUBHOUSE WITH SWIMMING POOL
ALL EXPERIENCES WAITING FOR YOU UNDER ONE ROOF



AVENUES FOR RECREATION & REJUVENATION



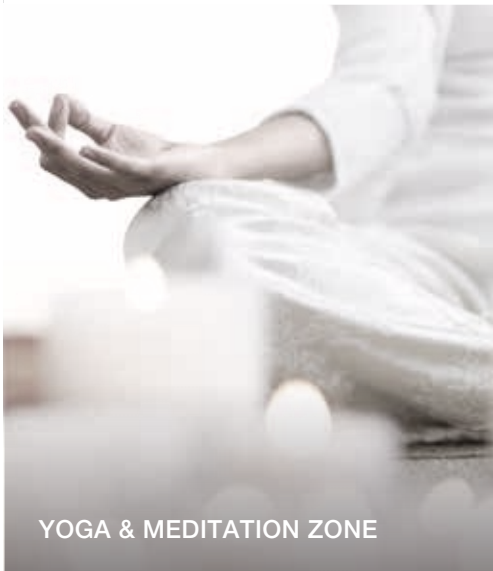
TABLE TENNIS



KIDS' PLAY AREA



POOL TABLE / BASKETBALL COURT



YOGA & MEDITATION ZONE

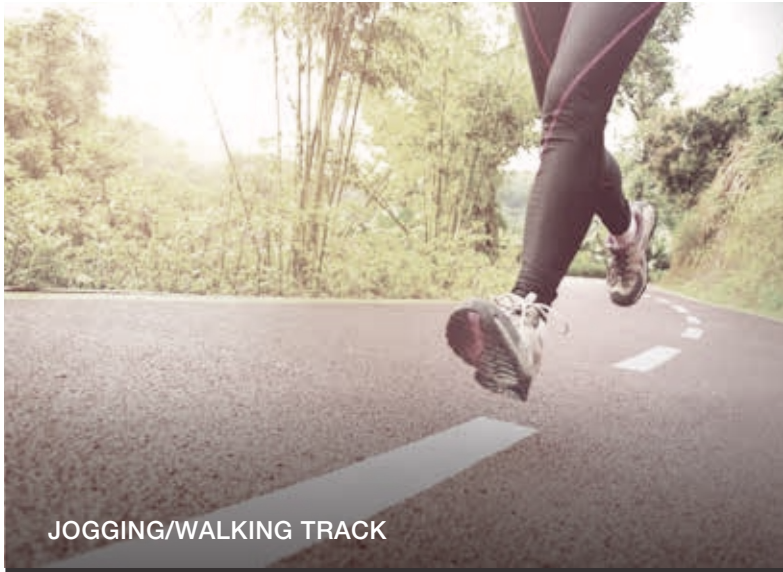


PARTY DECK



MULTIPURPOSE SPACES

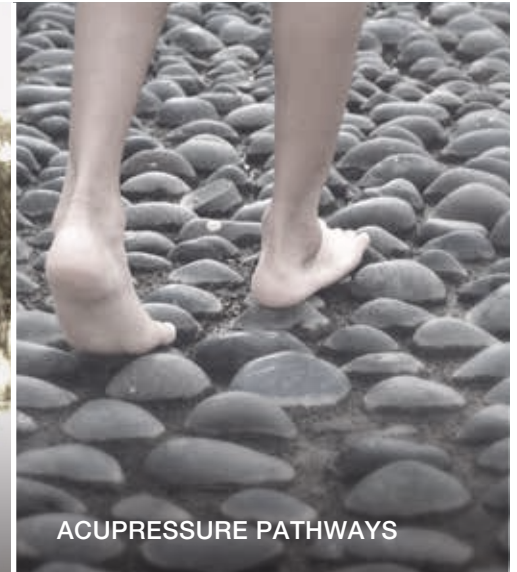
A JOYOUS LIFE AT **HEALTH & LEISURE CENTRES**



JOGGING/WALKING TRACK



WATER BODIES



ACUPRESSURE PATHWAYS



AMPHITHEATRE



PAVILION



SENIOR CITIZEN AREA

SUSTAINABLE **ECO-FRIENDLY** DEVELOPMENT



IGBC SILVER
PRE-CERTIFICATION



RAINWATER
WATER HARVESTING



SOLAR
ENERGY



GREEN
PLANTATION



GODREJ PROPERTIES IN PUNE

Godrej Properties in Pune began its journey a decade ago aiming at redefining the real estate scenario. Since inception, an array of legacy projects have been delivered thereby, establishing trust and credibility.



Area developed & delivered:
1.4 mn sq. ft. in
residential & commercial development



Area under development:
6.3 mn sq. ft. in
residential development

OTHER ONGOING PROJECTS - RESIDENTIAL



GODREJ HORIZON
NIBM ANNEX, PUNE

- Area – 5.1 lakh sq. ft.
- Phase 1 delivered on time
- Phase 2 nearing possession



GODREJ PRANA
UNDRI, PUNE

- Area - 23 lakh sq. ft.
- Construction in progress

COMPLETED PROJECTS - COMMERCIAL



GODREJ MILLENNIUM
KOREGAON PARK, PUNE



GODREJ CASTLEMAINE
BUND GARDEN, PUNE



GODREJ ETERNIA
SHIVAJI NAGAR, PUNE

COMPLETED PROJECTS - RESIDENTIAL



GODREJ SHERWOOD
SHIVAJI NAGAR, PUNE

TWO DECADES OF EXCELLENCE

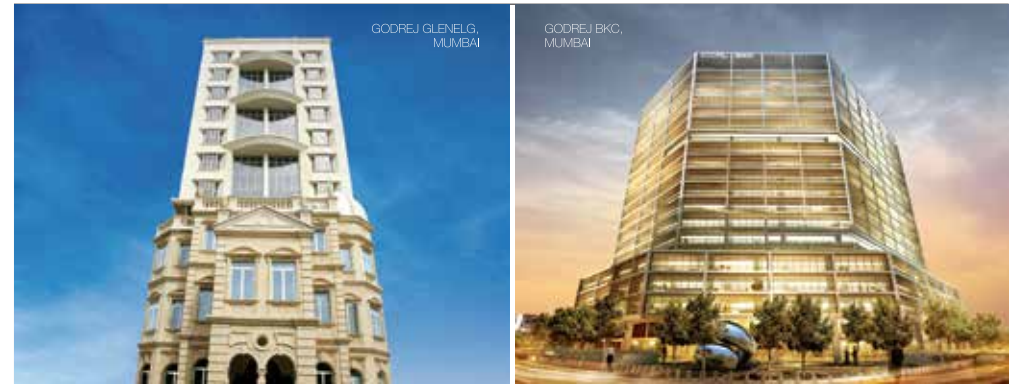
Godrej Properties brings the Godrej Group philosophy of innovation, sustainability, and excellence to the real estate industry. Each Godrej Properties development combines a 119-year legacy of excellence and trust with a commitment to cutting-edge design and technology. Godrej Properties is currently developing residential, commercial and township projects spread across approximately 10.67 million square meters (115 million square feet) in 12 cities.

RESIDENTIAL PROJECTS

Godrej Garden City	Ahmedabad
Godrej 17	Bengaluru
Godrej Woodsman Estate	Bengaluru
Godrej Platinum	Bengaluru
Godrej Gold County	Bengaluru
Godrej Palm Grove	Chennai
Godrej Frontier	Gurgaon
Godrej Summit	Gurgaon
Godrej Oasis	Gurgaon
Godrej Aria	Gurgaon
Godrej Prakriti	Kolkata
Godrej Platinum	Kolkata
Godrej Alpine	Mangalore
Godrej Bayview	Mumbai
Planet Godrej	Mumbai
Godrej Platinum	Mumbai
Godrej Riverside	Mumbai
Godrej Serenity	Mumbai
Godrej Waldorf	Mumbai
Godrej Edenwoods	Mumbai
Godrej Hill	Mumbai
Godrej Anandam	Nagpur
Godrej Horizon	Pune
Godrej Sherwood	Pune

COMMERCIAL PROJECTS

Godrej Eternia	Chandigarh
Godrej Genesis	Kolkata
Godrej Waterside	Kolkata
Godrej Coliseum	Mumbai
Godrej BKC	Mumbai
The Trees	Mumbai
Godrej Castlemaine	Pune
Godrej Eternia	Pune
Godrej Millennium	Pune



SOURCES

2ND LARGEST CITY IN THE STATE OF MAHARASHTRA

(Source: <http://www.worldlistmania.com/list-largest-cities-maharashtra/>)

2ND SAFEST CITY IN INDIA

(Source: http://www.business-standard.com/article/current-affairs/ahmedabad-safest-city-in-india-for-women-travellers-114030600519_1.html)

RANKS 2ND IN INDIA ON QUALITY OF LIFE

(Source: <http://www.siliconindia.com/news/general/10-Best-Indian-Cities-to-Live-In-nid-144909-cid-1.html>)

4TH BEST CITY IN INDIA FOR BUSINESS

(Source: <http://www.rediff.com/money/slide-show/slide-show-1-indias-21-best-cities-for-business-bangalore-tops-/20131023.htm#4>)

6TH HIGHEST PER CAPITA INCOME IN INDIA

7TH LARGEST METROPOLIS IN INDIA

(Source: <http://worldpopulationreview.com/world-cities/pune-population/>)

