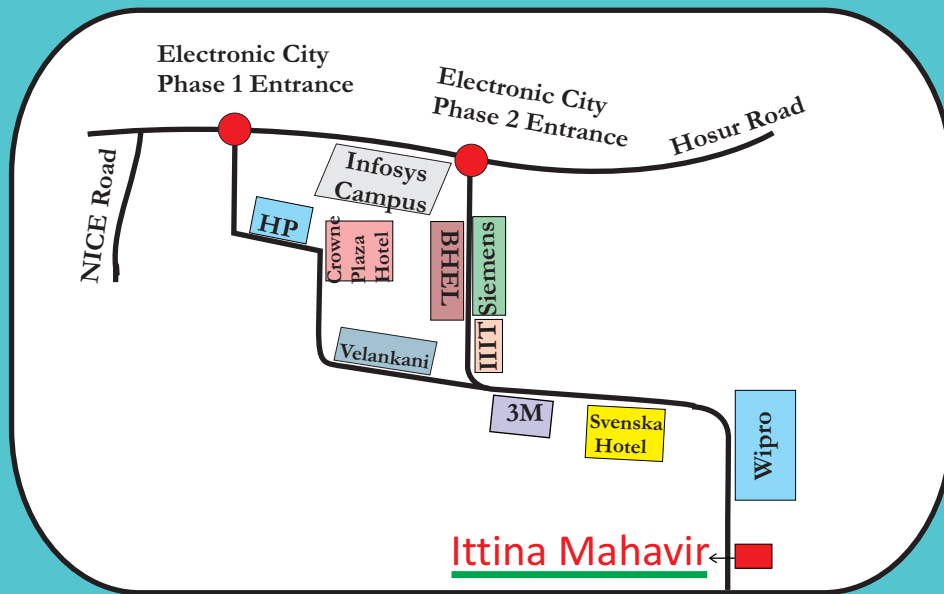




Route Map



Ittina Mahavir



Ittina Properties Pvt. Ltd
380, Ittina Centre
16th Main, 3rd Block
Koramangala, Bangalore 560035



Tel: +91 80 4131 4888
Fax: +91 80 6696 5073
Mob: +91 97439 98111
E-mail: sales@ittinagroup.com

Electronic City
ittinamahavir.com

Layout Map



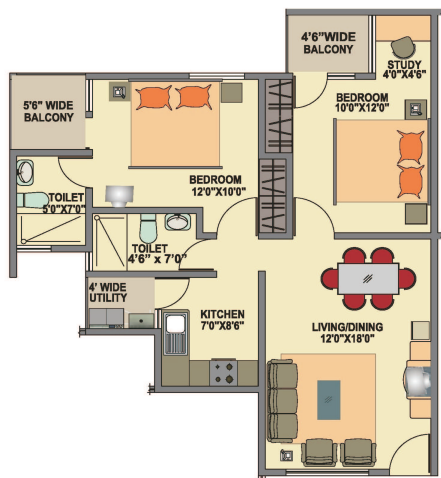
2 bedroom apartment



Unit : 2 Bedroom
 Living Area : 787 Sq.Ft.
 Super Built-up Area : 867 Sq.Ft.

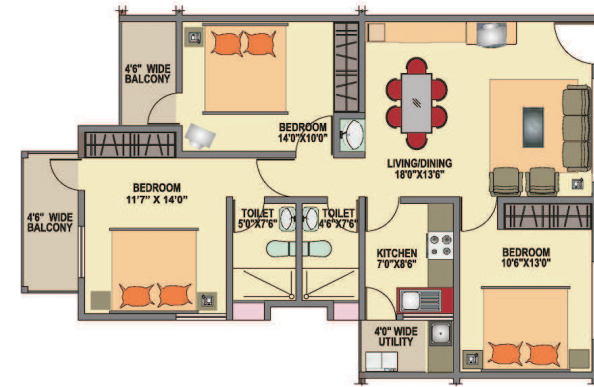
Flat nos.

B block : 305 to 505
 306 to 506
 115 to 515
 116 to 516
 C block : 105 to 505
 106 to 506

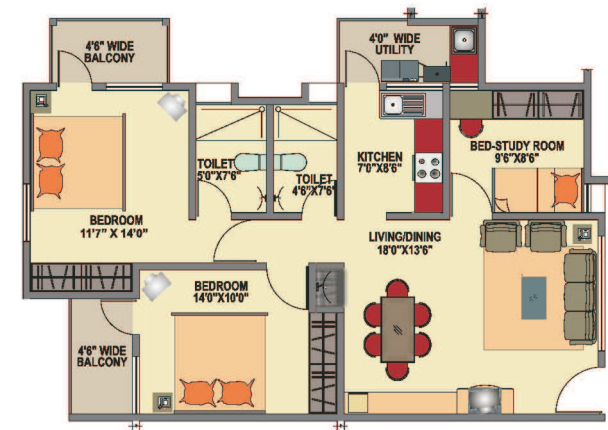


Unit : 2 Bedroom
 Living Area : 832 Sq.Ft.
 Super Built-up Area : 919 Sq.Ft.

3 bedroom apartment

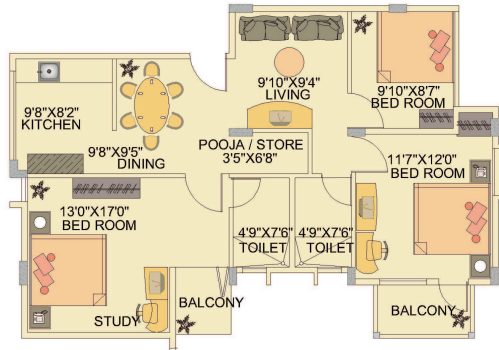


Unit : 3 Bedroom
 Living Area : 1072 Sq.Ft.
 Super Built-up Area : 1159 Sq.Ft.

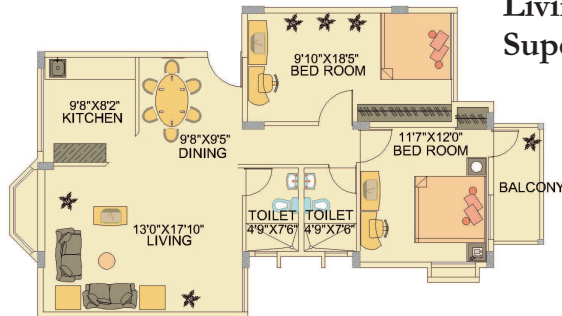


Unit : 3 Bedroom
 Living Area : 1016 Sq.Ft.
 Super Built-up Area : 1103 Sq.Ft.

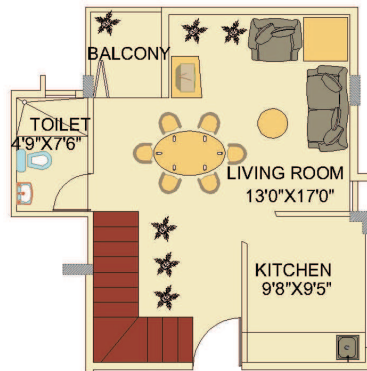
Combination types



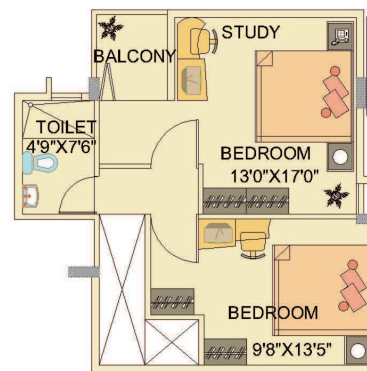
Unit : 3 Bedroom
 Living Area : 943 Sq. Ft.
 Super Built-up Area: 1143 Sq. Ft.



Unit : 2 Bedroom
 Living Area : 962 Sq. Ft.
 Super Built-up Area : 1175 Sq. Ft.



Unit : 2 Bedroom Duplex Unit
 Living Area : 962 Sq. Ft.
 Super Built-up Area : 1150 Sq. Ft.



Combination types



Unit : 1 Bedroom Unit
 Living Area : 734 Sq. Ft.
 Super Built-up Area : 814 Sq. Ft.
 Flat nos.

B block : 105 to 205
 106 to 206

Unit : 1 Bedroom Unit
 Living Area : 488 Sq. Ft.
 Super Built-up Area : 568 Sq. Ft.

Flat nos.

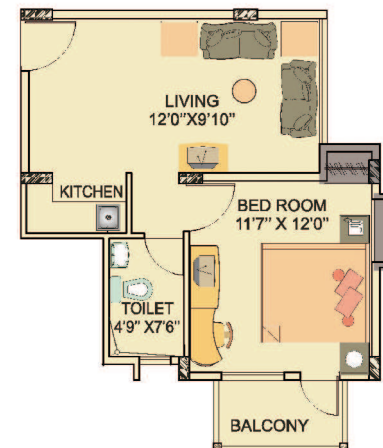
B & P block : 106 to 506
 107 to 507
 110 to 510



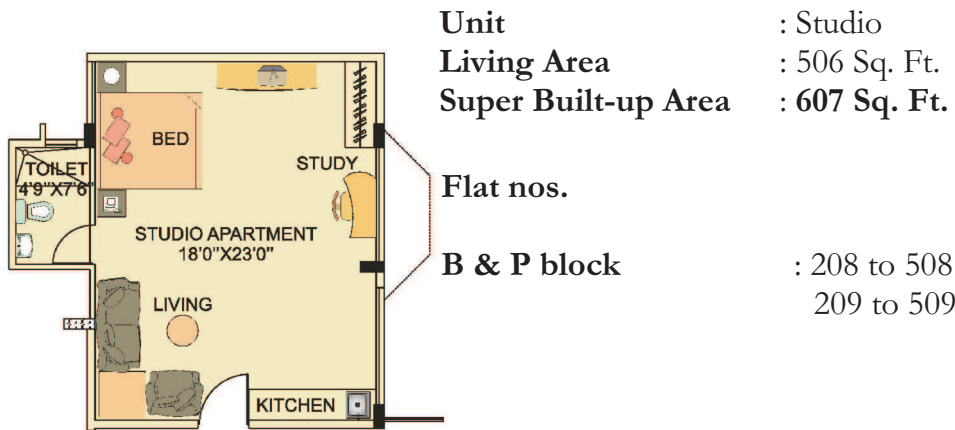
Unit : 1 Bedroom Unit
 Living Area : 488 Sq. Ft.
 Super Built-up Area : 589 Sq. Ft.

Flat nos.

B block : 102 to 502 112 to 512
 103 to 503 113 to 513
 108 to 508 118 to 518
 109 to 509 119 to 519
 C block : 102 to 502 108 to 508
 103 tp 503 109 to 509



Studio apartment



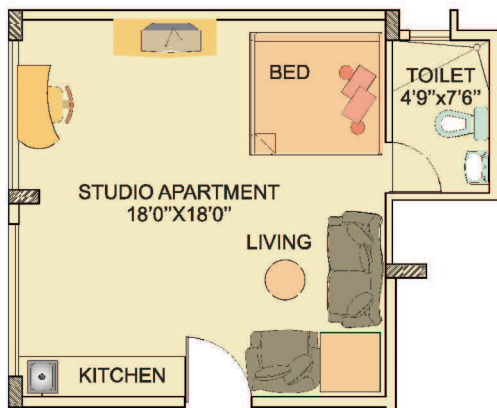
Unit : Studio
 Living Area : 488 Sq. Ft.
 Super Built-up Area : 589 Sq. Ft.

Flat nos.
 B & P block : 108, 109



Unit : Studio
 Living Area : 506 Sq. Ft.
 Super Built-up Area : 586 Sq. Ft.

Flat nos.
 B : 201 to 501
 210 to 510
 211 to 511
 220 to 520
 C : 201 to 501
 210 to 510



Studio apartment

Unit : Studio
 Living Area : 474 Sq. Ft.
 Super Built-up Area : 575 Sq. Ft.

Flat nos.

A & P block : 102 to 509
 105 to 505
 112 to 512
 115 to 515



Unit : Studio
 Living Area : 488 Sq. Ft.
 Super Built-up Area : 568 Sq. Ft.

Flat nos.

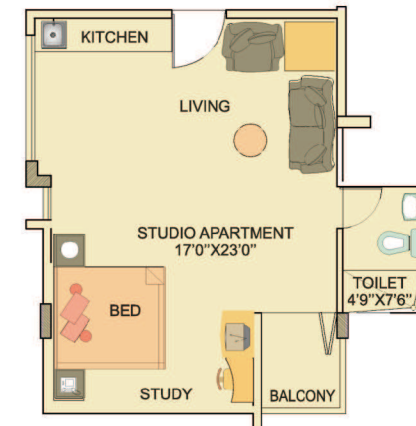
B : 110, 111
 C : 110, 101



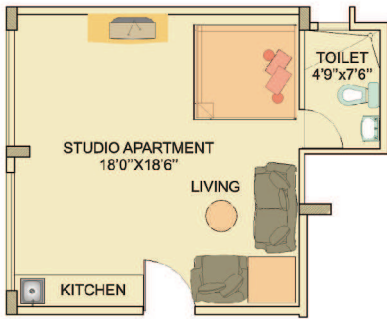
Unit : Studio
 Living Area : 474 Sq. Ft.
 Super Built-up Area : 554 Sq. Ft.

Flat nos.

B : 104 to 504
 107 to 507
 114 to 514
 117 to 517
 C : 104 to 504
 107 to 507

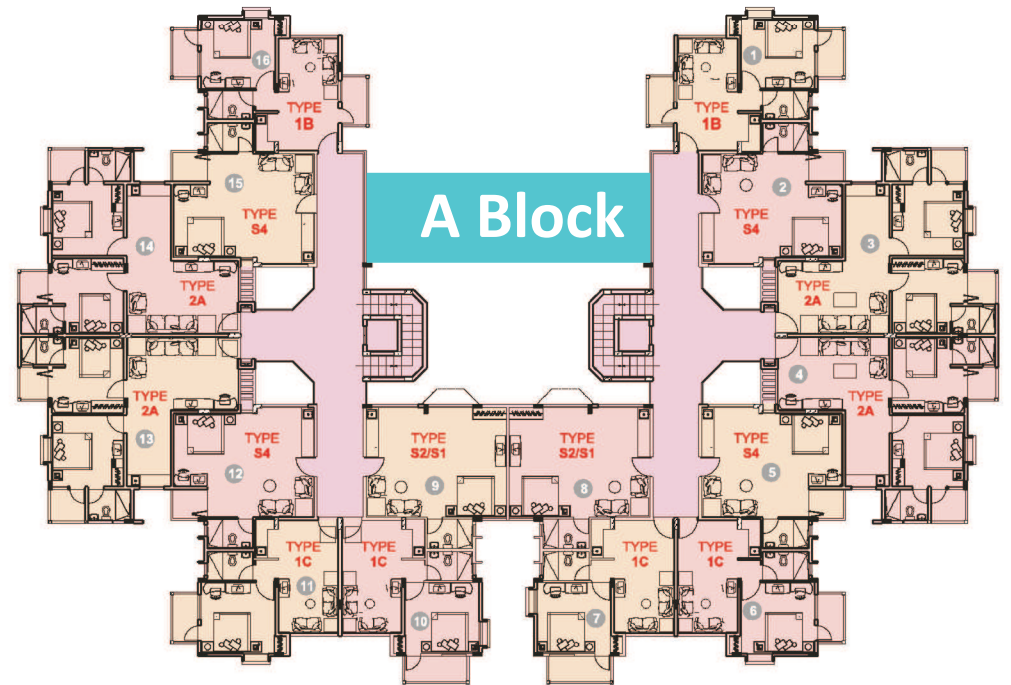
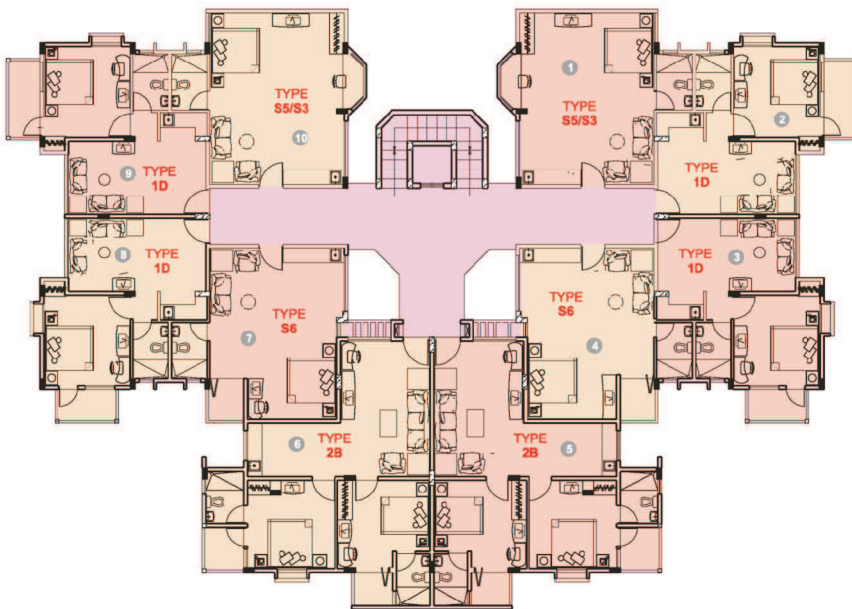
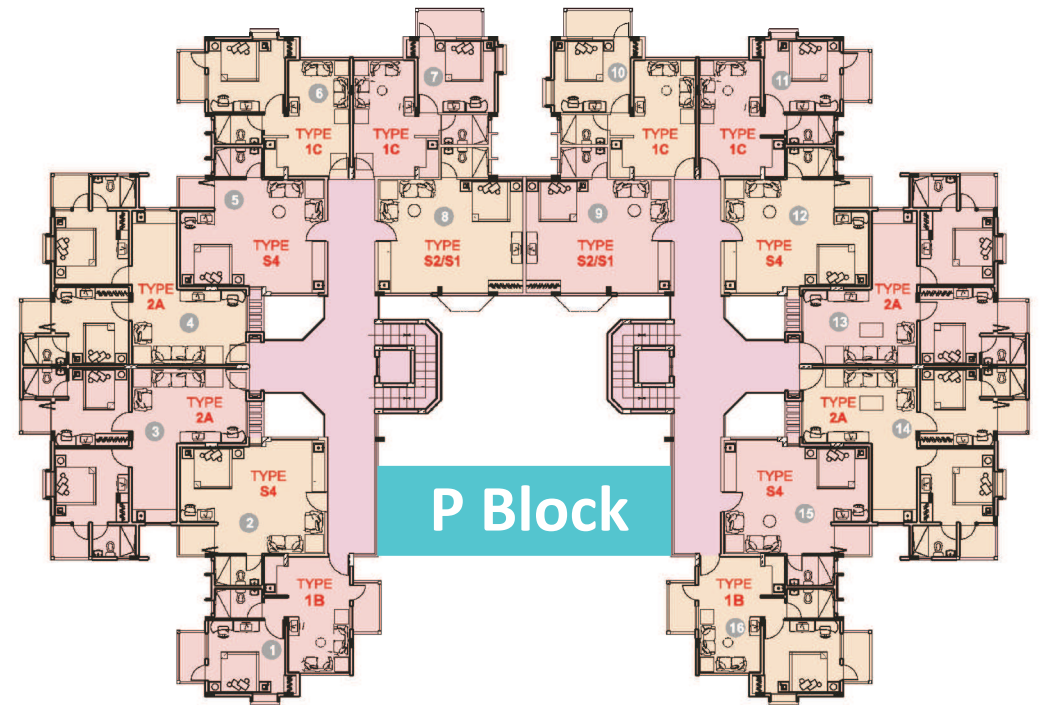


Studio apartment

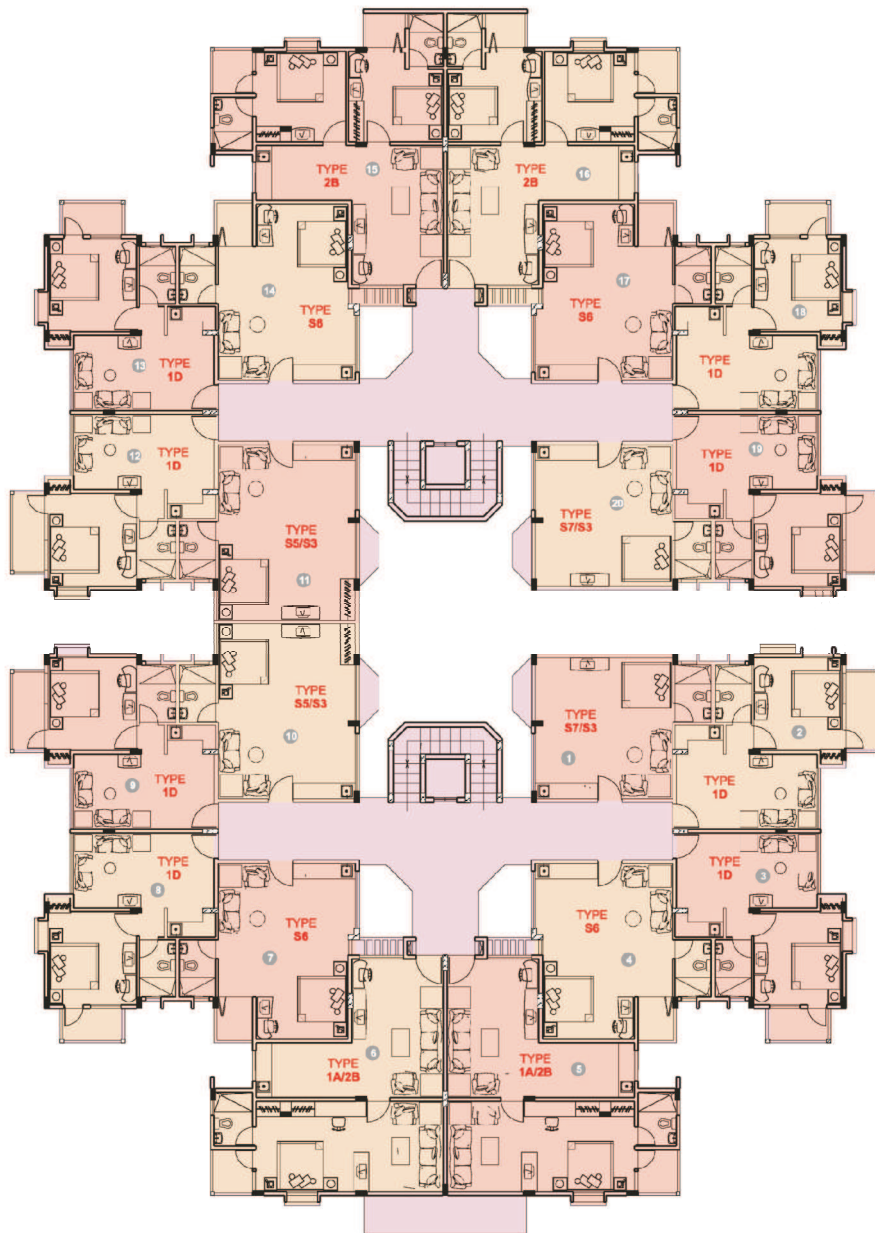


| | |
|---------------------|--------------------|
| Type | : S7 |
| Unit | : Studio Apartment |
| Living Area | : 404 Sq. Ft. |
| Super Built-up Area | : 408 Sq. Ft. |
| Flat nos. | |
| B | : 101, 120 |

B Block Plan



Typical Block Plan



Amenities

Fully Equipped Gym Intercom Badminton Court

Club House with indoor games Swimming Pool Jogging Track

Recreational Park Childrens Play Area

Shopping Arcade and Coffee Shop Open Air Theatre

24 Hour Water Supply 24 Hour Security

Basketball Court 2 Elevators per Block

Sewage Re-cycling Plant Toilets facilities for Drivers in Basement

Mechanized Car Wash Facility

Basement Parking for Residents and external parking for visitors

Specifications

| | |
|------------------|--|
| SUPER STRUCTURE | RCC framed structure and concrete block walls. |
| MASONRY | External 8" concrete block walls. Internal 4" thick concrete solid block walls. |
| FLOORING | Vitrified flooring of size 2'x2' for Hall, Bedroom, Kitchen and Balcony. Ceramic tiles of size 16"x16" for utility areas. Anti-skid tiles of size 1'x1' for toilet flooring. |
| DADOING | Premium quality glazed ceramic tiles up to 7'-0" height tiles of size 8"x12" and 12"x16" for border tiling and up to 2'-0" above Kitchen counter. |
| DOORS & WINDOWS | MDF Door Shutter [Skin type-Malaysian Magnaforms] with Teak wood panelled frame with matching hardware fittings for Main Door/Entrance door. Bedroom and Kitchen doors of Honne / Salwood frame with MDF door shutters. Toiler doors of Honne / Salwood frame with OST flush shutter. Toilet doors of Honne / Salwood frame with commercial flush shutter. Three track powder coated aluminum sliding Windows with safety grills and mosquito net shutters from Fenesta or Jindal. |
| KITCHEN COUNTER | Granite top, counter with stainless steel sink from faber or equivalent. |
| TOILET FIXTURES | Hindware or Parryware or equivalent sanitary ware and Jaquar or equivalent C.P.Fittings |
| PAINTING | Washable oil bound distemper for internal walls and ceilings and Weather shield Apex paint for external walls from Asian Paints. |
| ELECTRICAL | Anchor or equivalent electric wiring, Italia or equivalent modular switches, Telephone and TV points in living and all bed rooms. |
| POWER SUPPLY | 3-bedroom - 1.5 kVa 2-bedroom - 1.25 kVa 1-bedroom/studio - 1 kVa |
| BACKUP GENERATOR | Astand-by generator supports lighting of common areas, water pumps in the event of power failure, it also supports one point in each flat. |
| WATER SUPPLY | Continuous water supply through bore wells. PVC lines for sewerage disposal and concealed GI lines for water supply. Provision for Aquaguard point in kitchen. |
| COMMON AREAS | Granite flooring for lobby and staircases for all floors. |

Notes

