



A Project by
B. D. Constructions Pvt. Ltd.



B. D. Constructions Pvt. Ltd. is an eminent developer, engaged in the construction of residential apartments and commercial properties.

Aurus is a distinctive residential-cum-commercial project of 31 two-bedroom apartments and 14 road facing shops located in Baner on the Mumbai-Bangalore highway service road at Veerbhadra Nagar, one of Pune's fastest growing areas.

A promising location that combines the charm of the present with the promise of the future - of growth, development and high appreciation in real estate values.

Aurus boasts close proximity to all conveniences of daily life with shopping, medical facilities, schools, etc. all in the vicinity. A big advantage is that Aurus is in the very heart of Pune's burgeoning IT district.

Aurus is brought to you by an experienced team of professionals committed to building quality, brick by brick. We understand your needs and have made serious efforts to fulfil them.

Welcome to Aurus.



Building View

Specifications

RCC Structure

- Earthquake Resistant

Kitchen

- Granite Kitchen Platform With S.S. Sink
- Designer Wall Tiles Above Cooking Platform Upto Lintel Level
- Electrical & Plumbing Provision For Water Purifier

Flooring

- Vitrified Flooring In All Rooms
- Anti-skid Flooring For Terrace And Toilet

Doors & Windows

- Laminated / Molded Main Entrance Door
- Waterproof Flush Doors In Every Room With Elegant Handle & Lock Set
- Powder Coated Aluminum Sliding Windows With Mosquito Net
- M.S. Safety Grill For All Windows
- Granite / Marble Door Frame For Toilets
- Wooden Door Frame For Main Door & Bedrooms

Toilets

- Branded Sanitaryware
- Concealed Plumbing
- Branded CP Fittings
- Designer Wall Tiles Upto Lintel Level
- Electrical & Plumbing Provision For Water Heater & Exhaust Fan

Electrical

- Concealed Copper Wiring
- Branded Modular Switches
- Telephone & TV Points In Living & Master Bedroom
- AC Points In Living & Master Bedroom

Painting

- Internal Walls In Oil Bound Distemper
- External Walls In Acrylic Paint

Amenities

- Decorative Compound Wall
- D. G. Backup For Lifts And Common Areas
- Signature Entrance Gate With Security Cabin
- Landscaped Garden
- Play Area For Children
- Adequate Parking
- Well Laid Out Internal Roads
- Rain Water Harvesting
- PMC Water Supply and Drainage

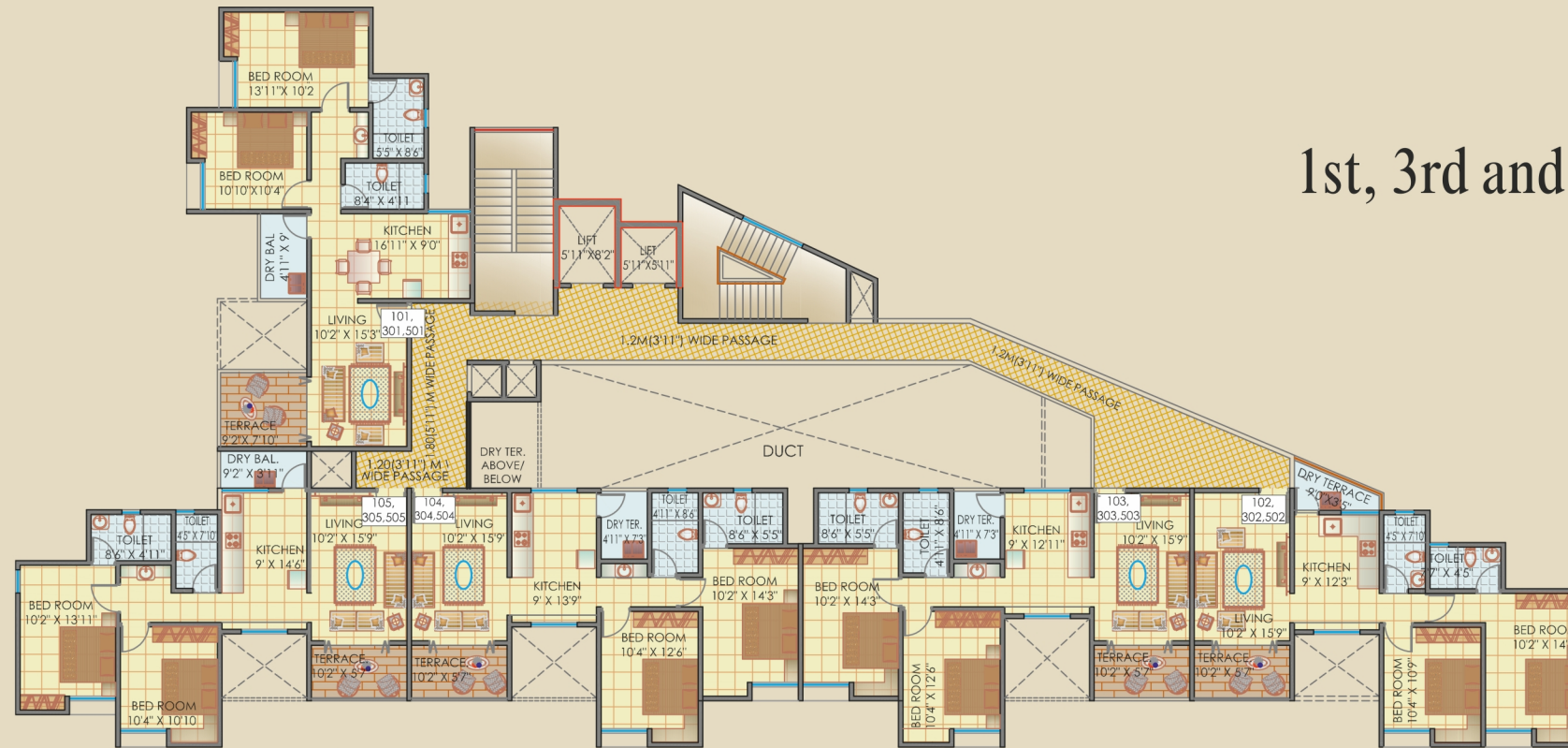


Note: Images are for representation purpose only.

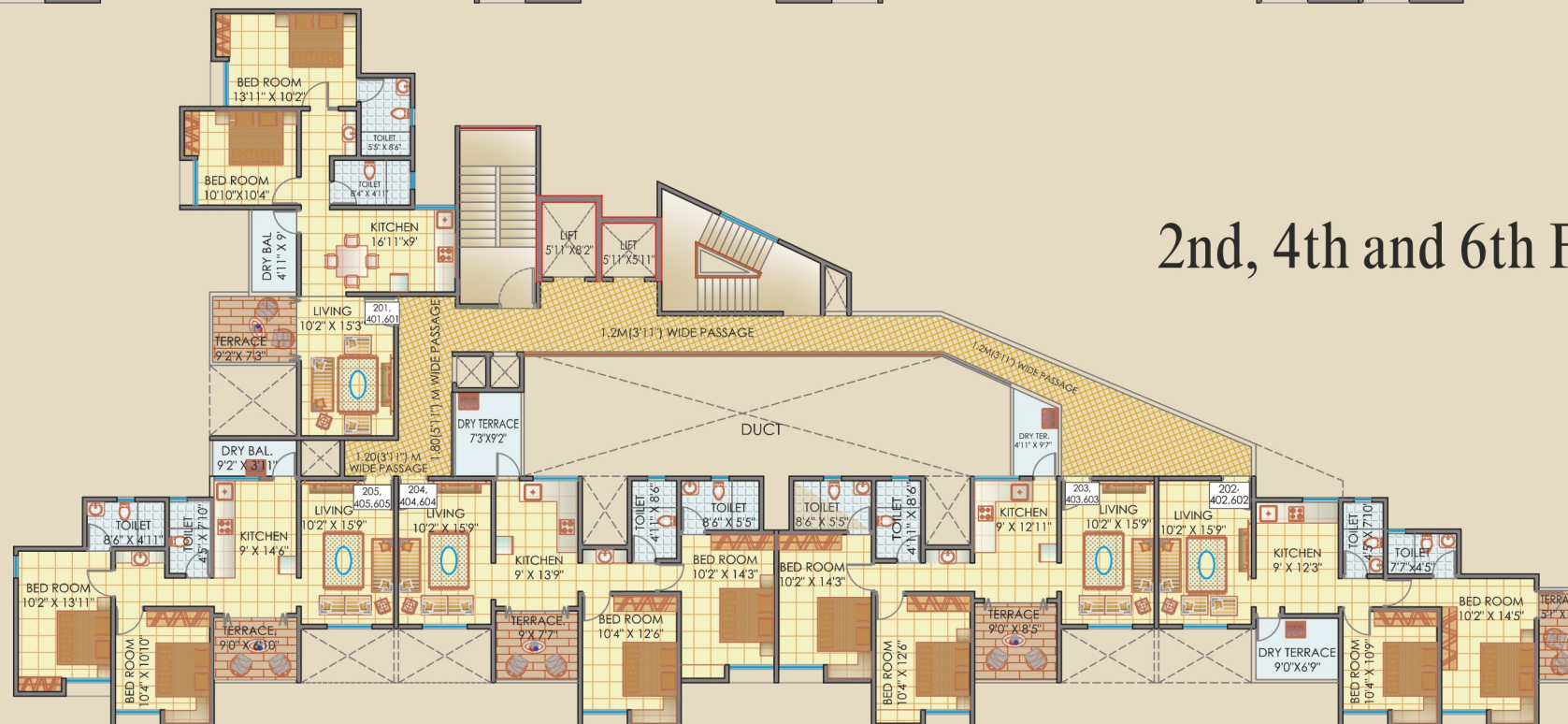


Side View



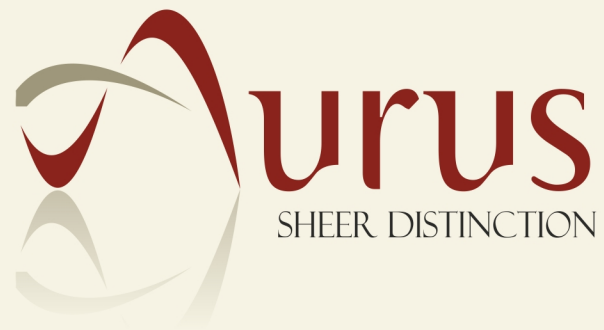


1st, 3rd and 5th Floors



2nd, 4th and 6th Floors





Site Address

Survey No. 90, Gate No. 3, Veerbhadra Nagar,
Service Road, Mumbai - Bangalore Highway, Baner, Pune.

Credits

Architects

Fourth Dimension Architects Pvt. Ltd.

RCC Consultants

Hansal Parikh & Associates

sales@aurus-baner.com

www.aurus-baner.com



B.D. Constructions Pvt. Ltd.

502 - B, Poonam Chambers, A - Wing, Shivsagar Estate,
Dr. Annie Besant Road, Worli, Mumbai 400 018
Contact: 9730518666, 8390776773

Location Map

