

OFF BANASWADI RING ROAD



DeFINER PREMIUM your dream the affordable way....

Presenting 2.65 acres of uninhibited elegance at an affordable price. Nestled in nature's courtyard, merely a few kilometers away from Manyata Embassy Business Park, one of the largest operational Business Parks of India, is your dream abode. 175 (2 and 3 BHK) well ventilated 3 side open apartments with ample breeze and sunlight offer you an amalgamation of luxury, superior craftsmanship and aesthetic appeal. Located off Banaswadi, the most buzzing retail hub of Bangalore, DeFINER Premium is just a stone's throw away from the upcoming metro station and the six lane Outer Ring Road. They provide unhindered accessibility to different parts of the city. A parallel highway barely 2 km from DeFINER Premium would offer easier approach to BIAL (Bangalore International Airport). With a mission to infuse new meaning into urban living we are here with a perfect blend of superior lifestyle amenities and affordability.

ABOUT PROJECT


DeFINER PREMIUM



RCC Frammed structure ■ **STRUCTURE**
Concrete solid masonry structure

Large sized (800 x 800 mm) vitrified flooring for living/dining ■ **FLOORING**
Standard (600 x 600 mm) Vitrified flooring for bedrooms/kitchen/utility

OBD for internal ■ **PAINTING**
Exterior emulsion paint

Teak Wood door frame with BST shutter ■ **MAIN DOOR**

Sal/Hardwood door frames with OST shutters ■ **OTHER DOORS**

Aluminium/UPVC sliding windows with plain glass ■ **WINDOWS**

Granite kitchen platform with stainless steel sink with drain board ■ **KITCHEN**
2ft Cladding with glazed tiles above platform level

SPECIFICATIONS


DeFINER PREMIUM

- (Games: TT/Pool etc) ■
- Gymnasium ■
- Meditation room ■
- Provision for Unisex Salon ■
- Piped Gas Connection ■
- Party Hall ■
- Swimming Pool ■
- Children Play area ■
- Provision for Departmental Store ■
- 24 hour security ■
- Power Backup for each apartment ■
- Intercom ■
- Video Surveillance ■
- Rain Water Harvesting ■
- Sewage Treatment Plant ■
- Coffee Shop Guest Rooms in the Club house ■

AMENITIES

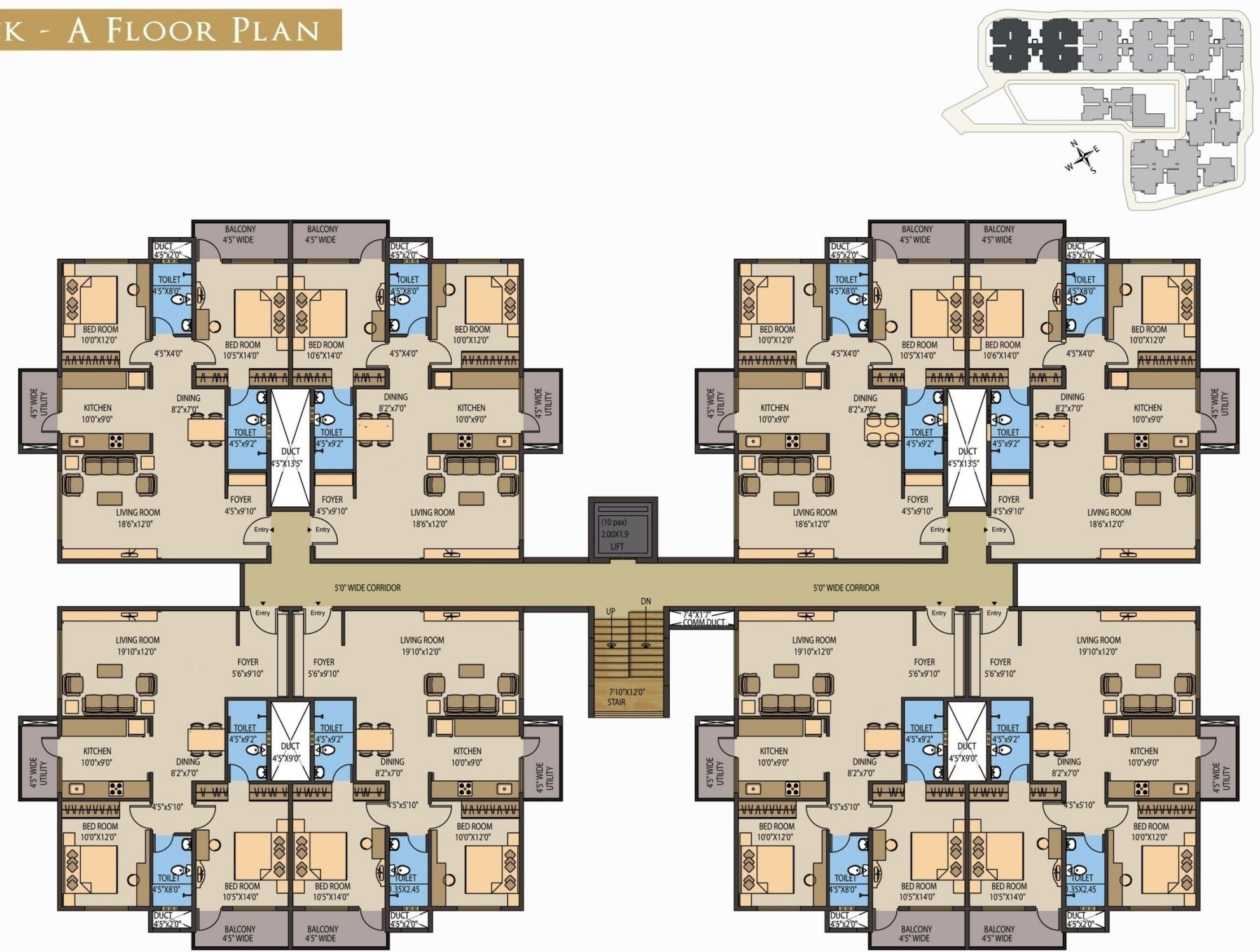
MASTER PLAN



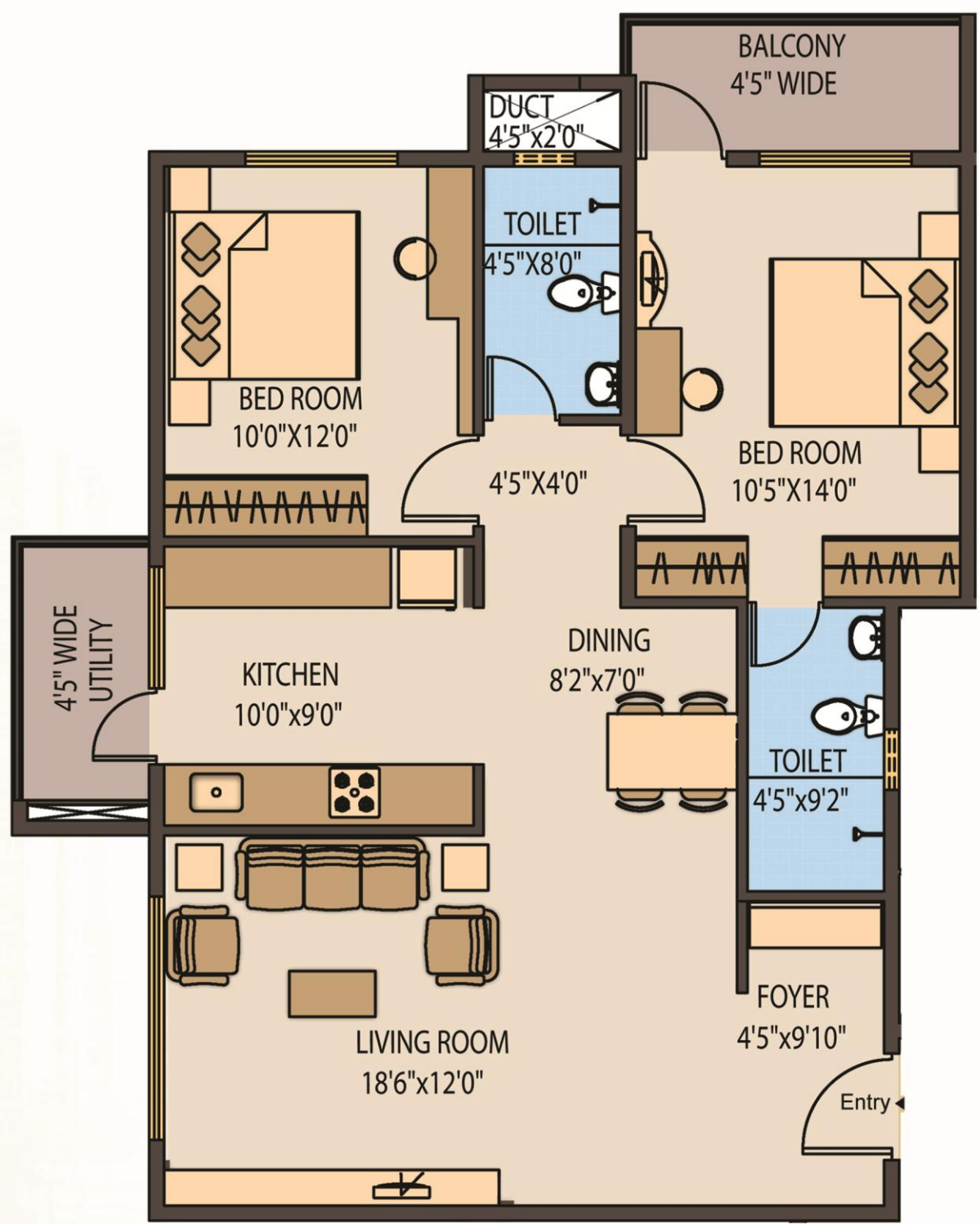
LOCATION MAP



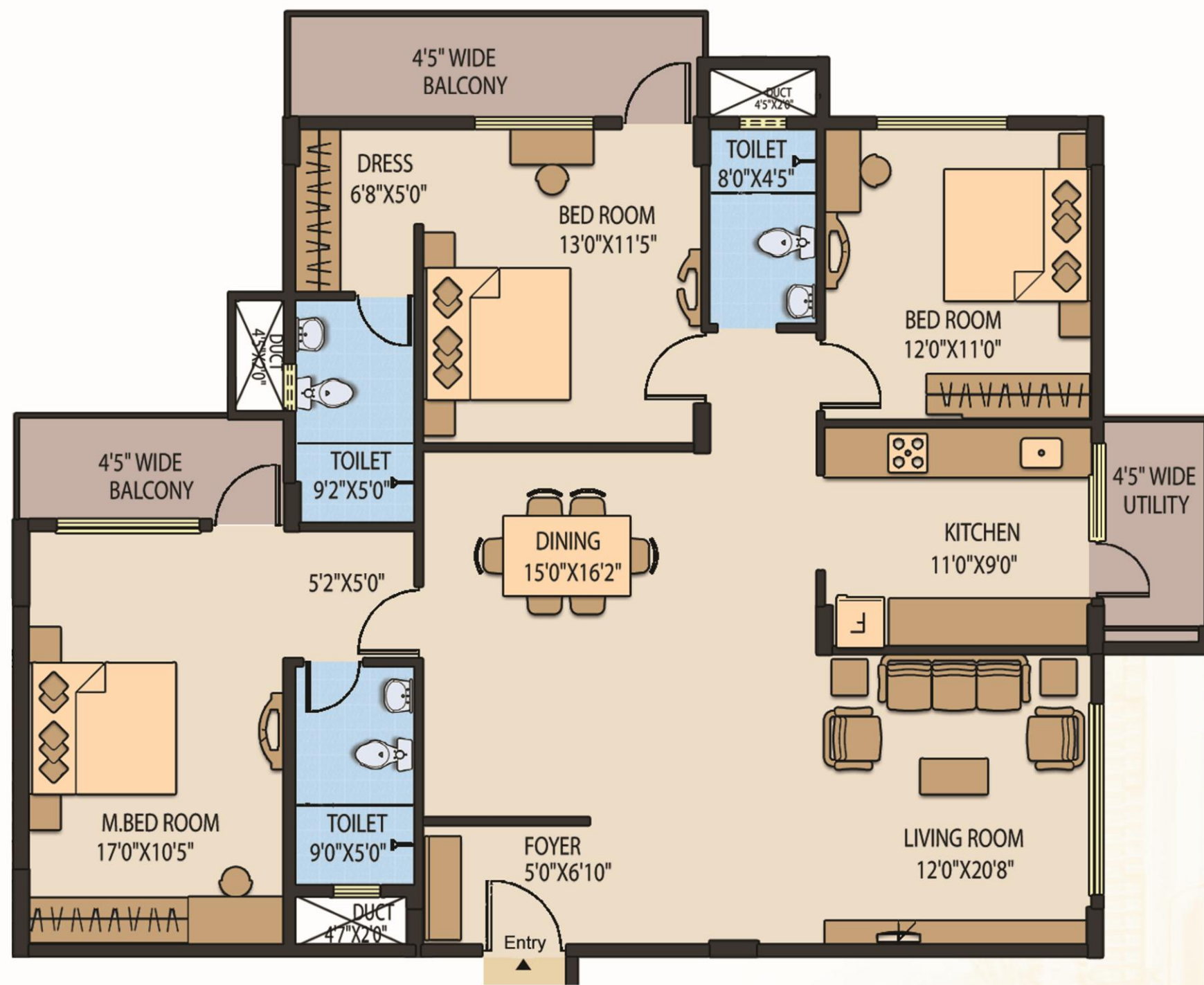
Block - A Floor Plan



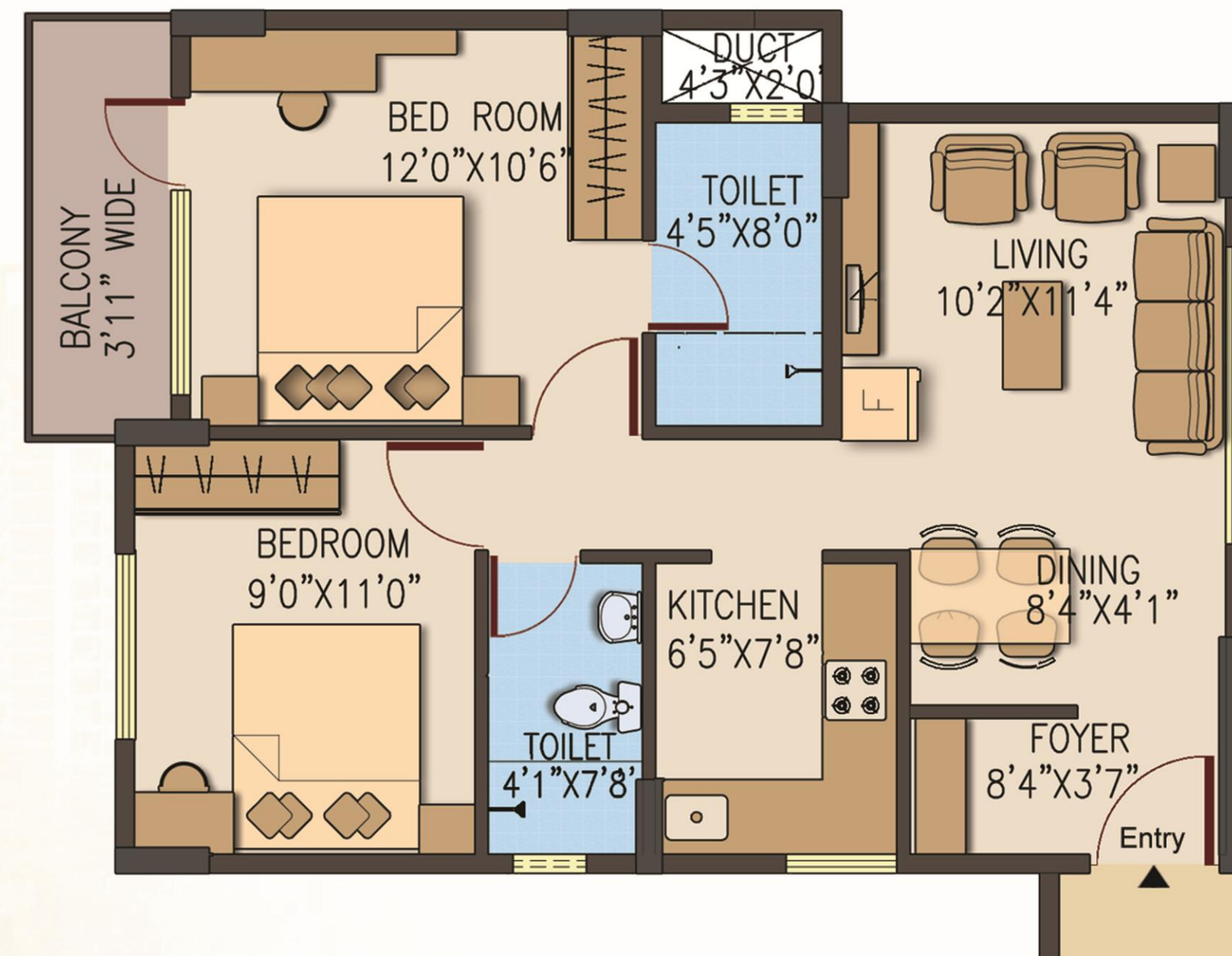
2 BHK

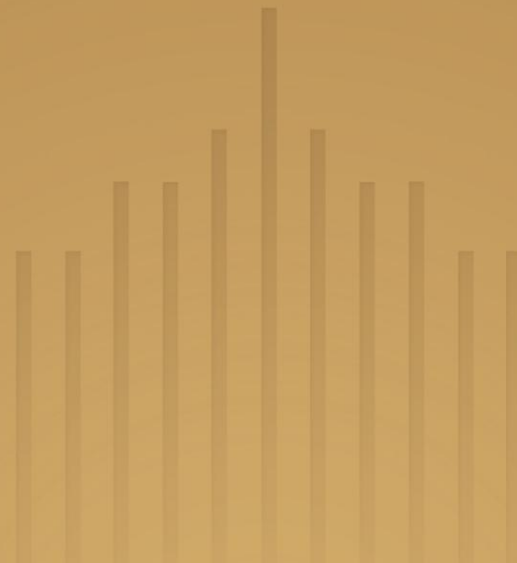


3 BHK



2 BHK





DEFINER VENTURES

NO. 501, 1ST FLOOR,
5TH CROSS, HMT LAYOUT,
R.T.NAGAR, BANGALORE – 560 032
+91 9980010261 / 2 +91 9900024821

www.definer.in

LEGAL ADVISERS: M/S KUSUMA ADVOCATES
ARCHITECTS : M/S V&A ASSOCIATES

DECLARATION