

We add the 'Spring'
to your steps!



Dhonor



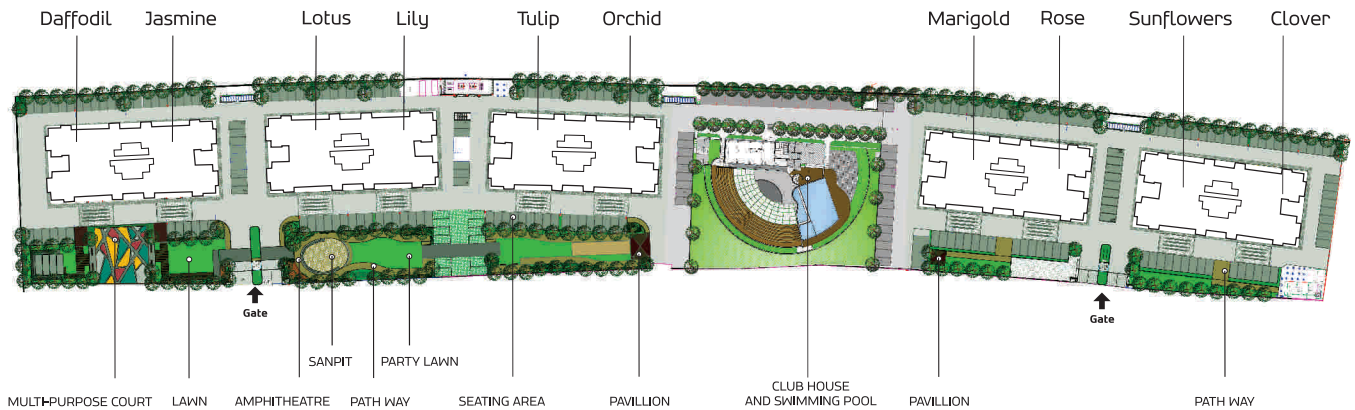
1, 2 & 3 BHK Healthy Home

Healthy living begins with a healthy, natural lifestyle. There are few who realise this and strive to live as close to Nature as possible. However, living in the midst of nature would necessarily mean compromising on the comforts of town-life. You cannot have the best of both lives at the same time.

Or can you?



Layout



Now, beautifully blending together the conveniences of modern life and the health benefits of living close to nature, Pride Purple Group and Rainbow Housing Co. have made the impossible possible by creating Park Springs, a 2 & 3 BHK apartment project in Dhanori-Lohegaon road, for those who wish to live healthy.

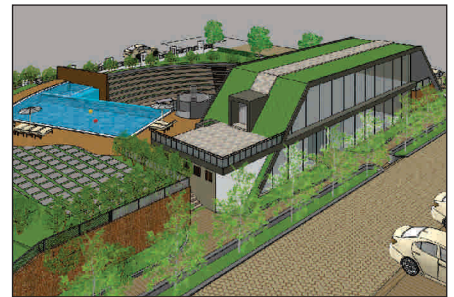
You name it - You have it



Apart from healing gardens, Park Springs is also furnished with the best of amenities, to help you live life to the hilt.

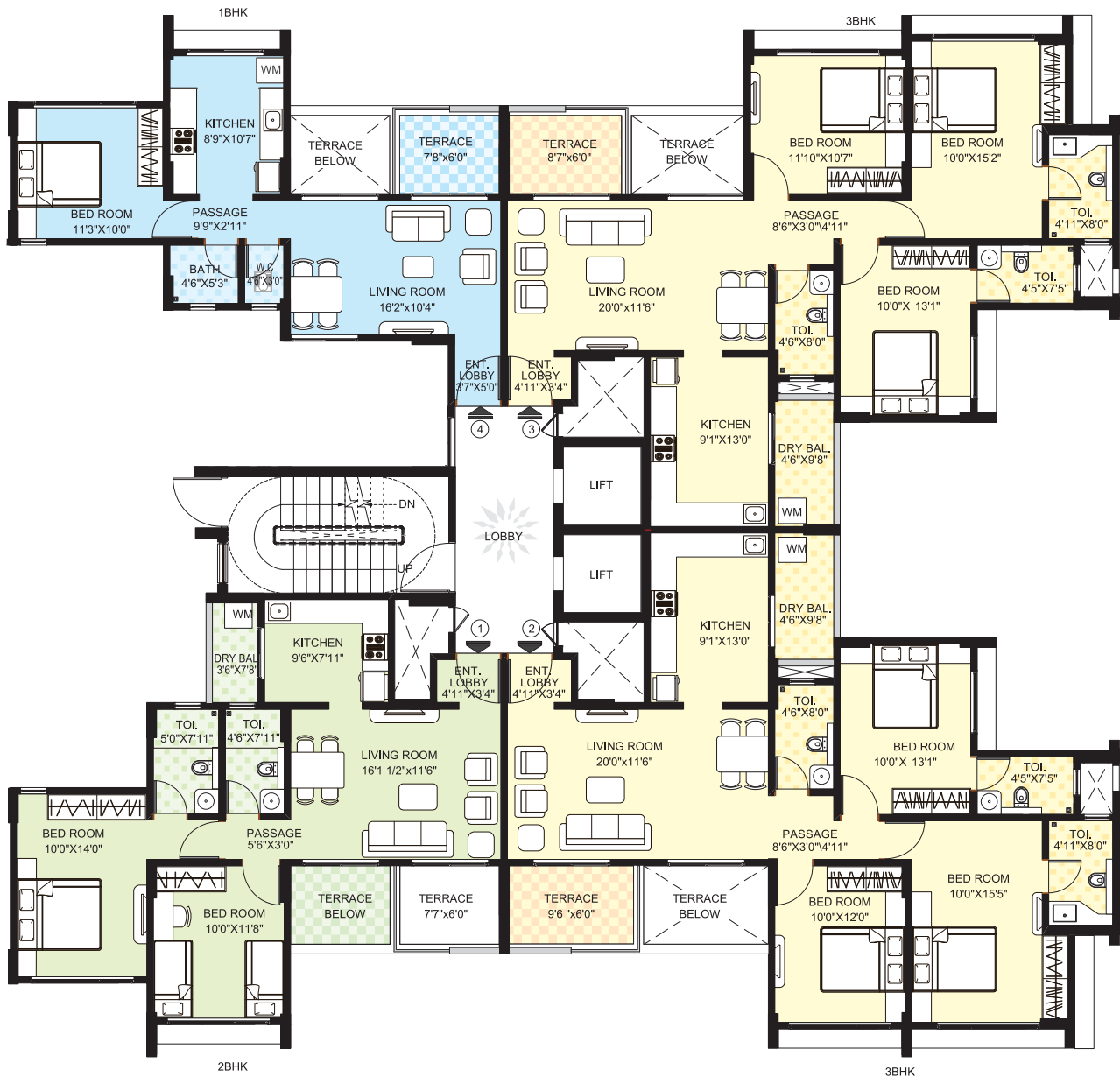
- Club house
- Gymnasium
- Swimming pool
- Party lawn
- Children's play area
- Piped gas system
- Genset back up for common areas
- Intercom phone
- Automatic lifts
- Fire fighting systems
- Sewage treatment plant
- Rain water harvesting
- Designer entrance lobby
- Concrete / Paved internal driveways

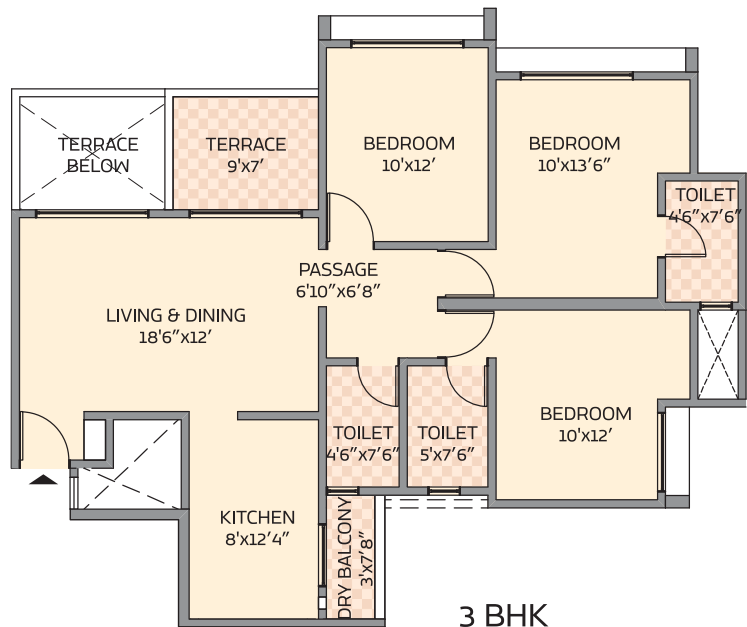
A quick look at the specifications-



- 2' X 2' vitrified flooring
- Jaguar make / equivalent C.P. fittings
- Anchor Roma / equivalent electrical fittings
- Modular kitchen with chimney hob
- Provision for :
 - a. Washing machine in dry balcony
 - b. Water purifier
 - c. Exhaust fan in toilets
 - d. Inverter
 - e. A.C. in master & children's bedroom
- Hindware / Cera / equivalent sanitary ware

- a. Wall hung EWC in toilets
- b. Counter wash basin in toilets
- Doors with laminate on both sides
- Internal doors with mortise locks
- Concealed GI plumbing
- Internal OBD paint & external acrylic paint
- Powder coated aluminum sliding windows with mosquito mesh
- M.S. safety grills for windows
- Antiskid flooring for attached terraces
- Granite / marble sill for windows
- Polycab / Finolex / equivalent electrical wires

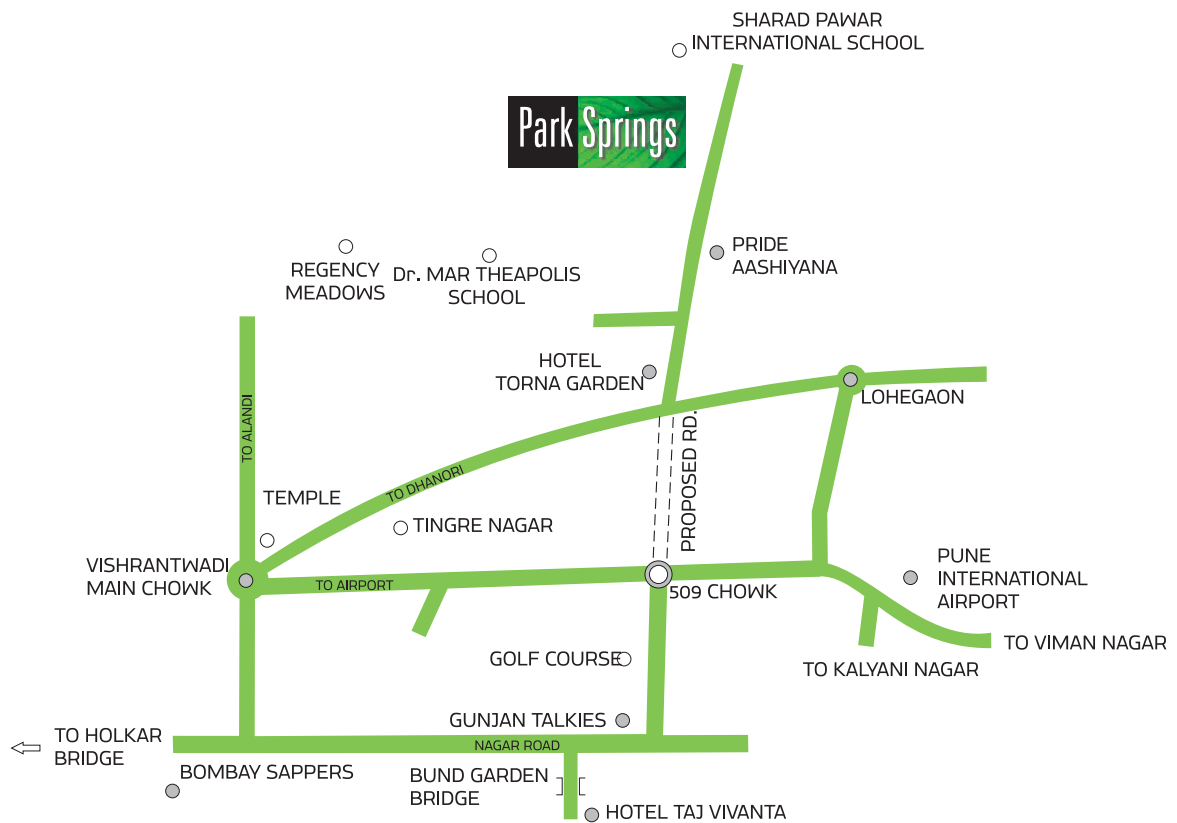




3 BHK

3 BHK- 1360 sq. ft.

Location Map



Credits

Architect : Abhikalpan Architects & Planners

R. C. C. Consultant : G.A.Bhilare Consultants Pvt. Ltd.

Electrical Consultant : Consolidated Consultants & Engineers Pvt. Ltd.

Plumbing Consultant : Amit Infrastructure Consultants

Landscape Architects : Design Terra

_____ Project by _____



Pride Purple Group & Rainbow Housing

Park Springs: Survey No. 284, Dhanori-Lohegaon road, Pune - 411 032

•Tel: +91-99231 80000, +91-99234 80000 • www.pridepurplegroup.com

Member CREDAI, Pune