



N I C H E

MAJESTIC VILLAS...



N I C H E

MAJESTIC VILLAS...

Night View



About Majestic Villa

In the high sky of Pune city we are creating a NICHE a privileged abode for the deserved ones, we are bound to deliver an above premium product for extraordinary life & living.

Majestic villa is a state of the art project intended to give the grandeur of space to the user. There are three villas in this project - Royal (6661 sq.ft.), Regal (6497 sq.ft.) and Imperial (7213 sq.ft.) Majestic villa is designed keeping in mind the concept where each user will have an unique opportunity to shape your living space according to your tastes and values. It provides you with a living experience that is distinct and exclusive. From the entrance lobby to the car park, from the terrace to the landscaped gardens, Majestic villa enthralls. It will hold you and your guests spellbound.

The bungalows in the city of Pune - will dazzle, decked with the brilliance of individual homes each a signature of the owner's identity, values and tastes.



Extraordinaire Appeal

Majestic villa is a seismic resistant, termite resistant structure that has been constructed with the best that technology offers. All three villas at Majestic villa will be subjected to stringent third party checks by Quality Consultants. Materials being used in this project are inspected by professional laboratories.

Kitchen Features



- ▲
 - Modular kitchen
 - Granite platform
 - Lower and upper cabinets
 - Water purifier

- ▶
 - Imported tiles in all bathrooms
 - Dry & wet areas separated by glass partition
 - All sanitary fittings - jaguar or equivalent

Bathroom Features



Amenities

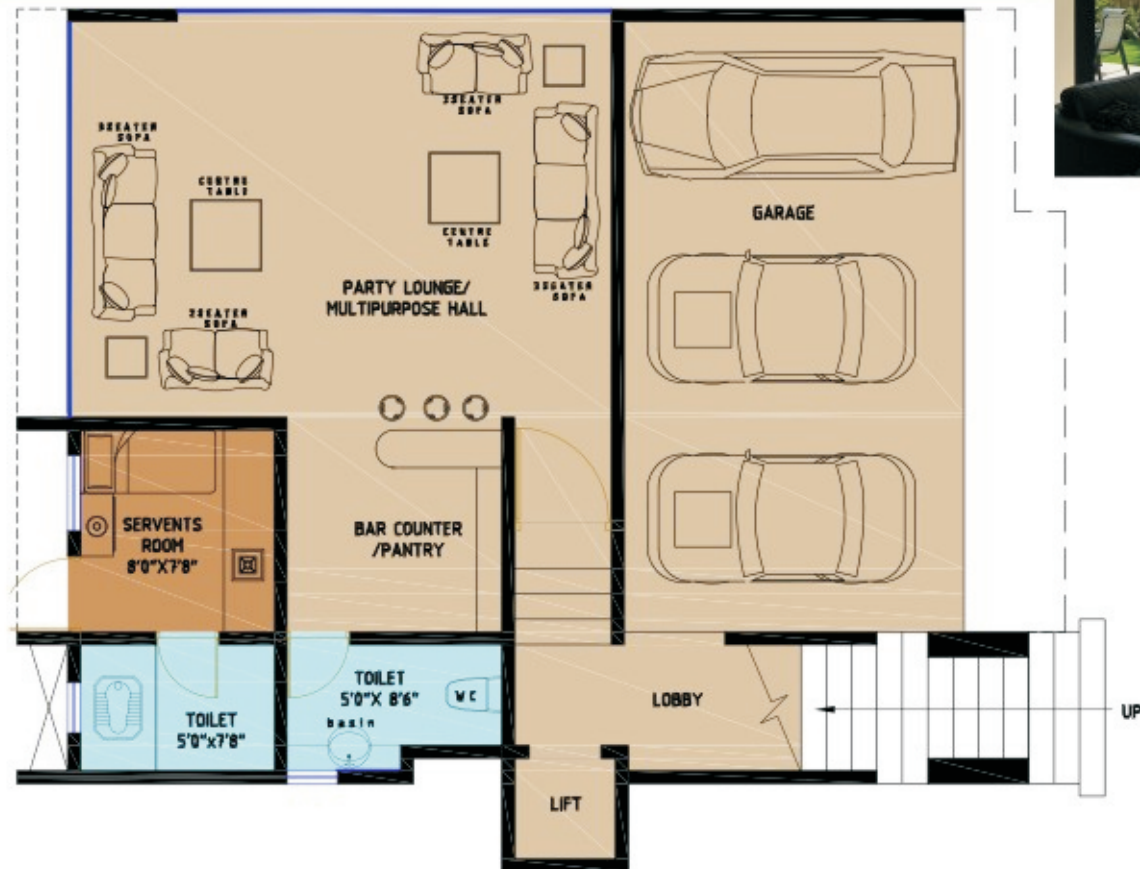
- Entrance lobby and living area - Imported marble.
- Multipurpose hall - Rustic wooden look tiles 60x60cm.
- Servant room - 60x60 vitrified tiles.
- Outside parking area - Vitrified paving tiles 200x200 mm.
- All Toilets, powder room - Full height digital ceramic tiles 30x60 cm.
- All terraces and dry balconies - 60x60 cm wooden look rustic tiles.
- Kitchen - 60x60 cm rustic tiles.
- Drawing room - Imported marble.
- Guest bed - 80x80cm vitrified tiles.
- Master room - Wooden look tiles.
- Children bed room and family space - 80x80 cm vitrified tiles.
- Master bed at third floor - 80x80 cm vitrified tiles.
- All doors solid wooden with veneers
- All windows aluminum with electroplating with glass.

- Modular Kitchen with ceramic tile dado upto full height with top and bottom cabinets and granite platform.
- All sanitary wares /CP fittings from Jaguar/ equivalent.
- Plumbing system modern PEX System of piping. With booster pumps to create water pressure in all bathrooms.
- All bathrooms with dry and wet areas separated with modern glass shower enclosures.
- Storage type water heaters of adequate capacity.
- Electricals - All wiring concealed copper, with adequate points for all utilities, air cons, internet with legrand switches.
- Legrand / equivalent home automation system.
- Internal paint/ External paint - Asian/equivalent Paints.
- Energy saving led lighting in common area.
- Inventor Back up for each villa /Common Areas.
- Lift, Johnson/equivalent
- 6 Air Conditioner

MAJESTIC VILLAS



Lower Ground Floor Plan



Ground Floor Plan



First Floor Plan



Second Floor Plan



Site Map



Office : F-3, First Floor, Sacred World, Wanowrie, Pune - 411 040.
Ph: 020 26806994/3 | Cell : +91 9850223434
www.nicheconstructions.com | www.nicheconstructions.co.in
info@nicheconstructions.com

Site Address : Plot no. 29, Sr. no. 29, Dhanjibouy Society,
Behind Bizzbay Market, Opposite Clover Palaside, NIBM Road, Pune.

Credits



vision for space

www.vispaarchitects.com

www.imagineext.in

Note: The Plans, Specifications, Amenities, Number of Units, Number of floors, Area subject to change without any prior notice. The rights of certain changes are reserved by the developers. * Photographs in the brochure are only indicative.