



The aura of happiness

A Project By :





0%

Interest


0% व्याजदरात
निसर्ग संपन्न वातावरणात
आपल्या स्वप्नातील
रो हाऊस

*The big beautiful sky smiles from above,
And sounds of laughter fill the air,
Happy as the yellow spring morning,
I beam with pride for I stay here!*

Prepare yourself for a fantasy ride because everything you see in and around Pinecrest looks straight out of a fairytale. Happy kids and singing birds meet you at the gate and garden blooms bow down in your honor. It's the aura of this place that you would want to hold on to for the rest of your life! Join us while we take you on a spectacular journey called Pinecrest.

Pinecrest
The aura of happiness





*On the fresh mowed lawn amidst the lush green trees,
I sit quietly watching the birds and flowers greet,
There is urgency in the way they meet,
As if love struck but separated by the simmering summer heat.*

Becoming landscapes and striking flower beds are a given at Pinecrest but what sets it apart is the calm lake that exudes an air of rustic elegance. Hugging the hills sitting coyly beneath the azure skies, the lake stands testimony to Pinecrest's inclination to put nature in the center stage. And to give you company in this blissful surroundings, there would be hundreds of migratory birds who are as eager to soak in the views as you are.





*When was the last time we felt this close,
When our hearts reached out before our hands did,
When we could speak endlessly through our silence,
Just enjoying the pink solitude of sylvan ambience!*

Don't be surprised if you crave to be alone at Pinecrest because everything here is designed to bring people closer. A sense of calm prevails over you allowing more happiness and contentment. Needless to say, you are more inclined to spend time with the ones you truly love indulging in idyllic family moments that complete the canvas of love.





Pinecrest

The aura of happiness

Endowed with nature's goodness, Pinecrest comes across as an endless stretch of luxury homes pampered by spectacular views and tree lined avenues. There are more than **165 Row houses** to choose from though it wouldn't matter where you stay since each one is a masterpiece in its own right. Sitting on a sprawling **10.5** acres of land, Pinecrest is the finest example of pure rustic bliss.





GYMNASIUM



JOGGING TRACK



INDOOR GAMES



SENIOR SITOUT AREA



BASKET BALL COURT

SWIMMING POOL



GREATER AMENITIES, GREATER JOY

Leisure Features

Club House
Gymnasium
Indoor Games
Swimming Pool
Children Play Area
Badminton Court
Basket Ball Court
Amphitheatre
Party Lawn
Jogging Track
Senior Sitout Area

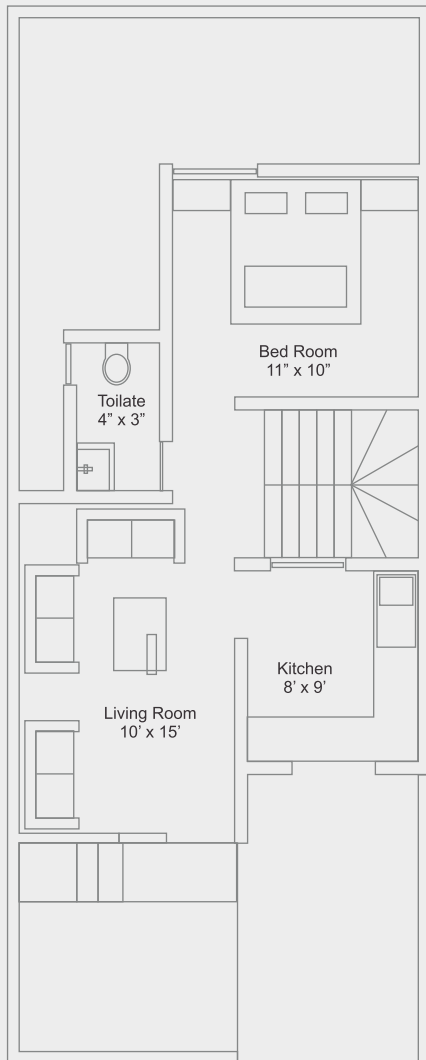
General Features

Elegant Entrance Gate
Security Cabin
Home Security Solution
Ample Parking Space
Rain Water Harvesting
Designer Landscape
Sewage Treatment Plant

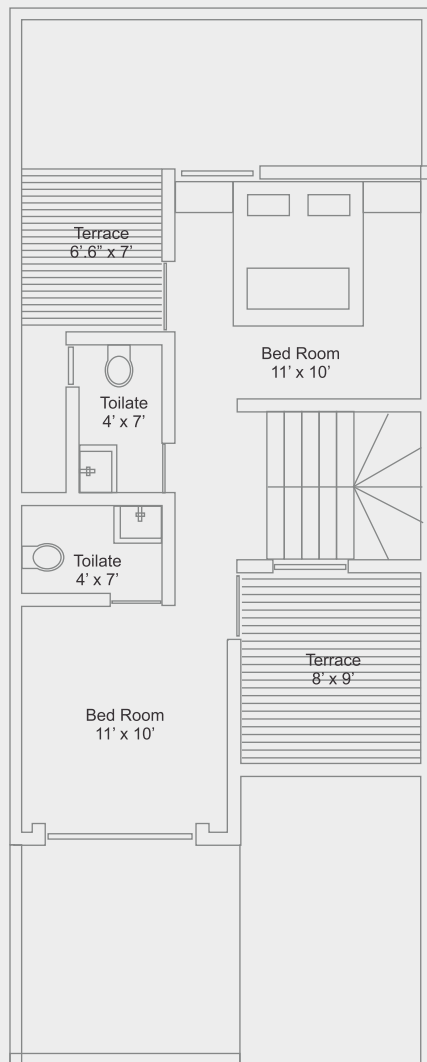
Pinecrest

The aura of happiness

GROUND FLOOR PLAN



FIRST FLOOR PLAN





SPECIFICATIONS

STRUCTURE

RCC frame structure of superior quality designed for earthquake safety

INTERNAL FINISH

Waterproof putty finish coating
Pleasing shade of oil bound distemper

EXTERNAL FINISH

External sandfaced plaster
Acrylic waterproof cement paint

KITCHEN

Granite Kitchen platform with SS sink,
4' High Designer glazed tiles.
Provision for water purifier, exhaust fan

FLOORING

32" x 32" branded vitrified tiles in all rooms
Antiskid tiles for terrace and balcony

WINDOWS

Powder coated aluminum sliding windows with mosquito net
Granite window frame, MS safety grills

DOORS

Main Door
Elegant designer door with night latch
Bedrooms
Laminated flush door (both sides)
Toilets
Granite frame with water proof flush door

ELECTRICAL

Concealed wiring with modular switches
Cable TV, telephone point provision in living & master bedroom
Provision for inverter (basic wiring)

BATHROOM

Concealed internal plumbing
Jaquar C.P. fittings
Hot & Cold mixer
7' High designer 18" x 12" tiles
Provision for geyser & exhaust fan

CAR PARKING

Covered Car Parking

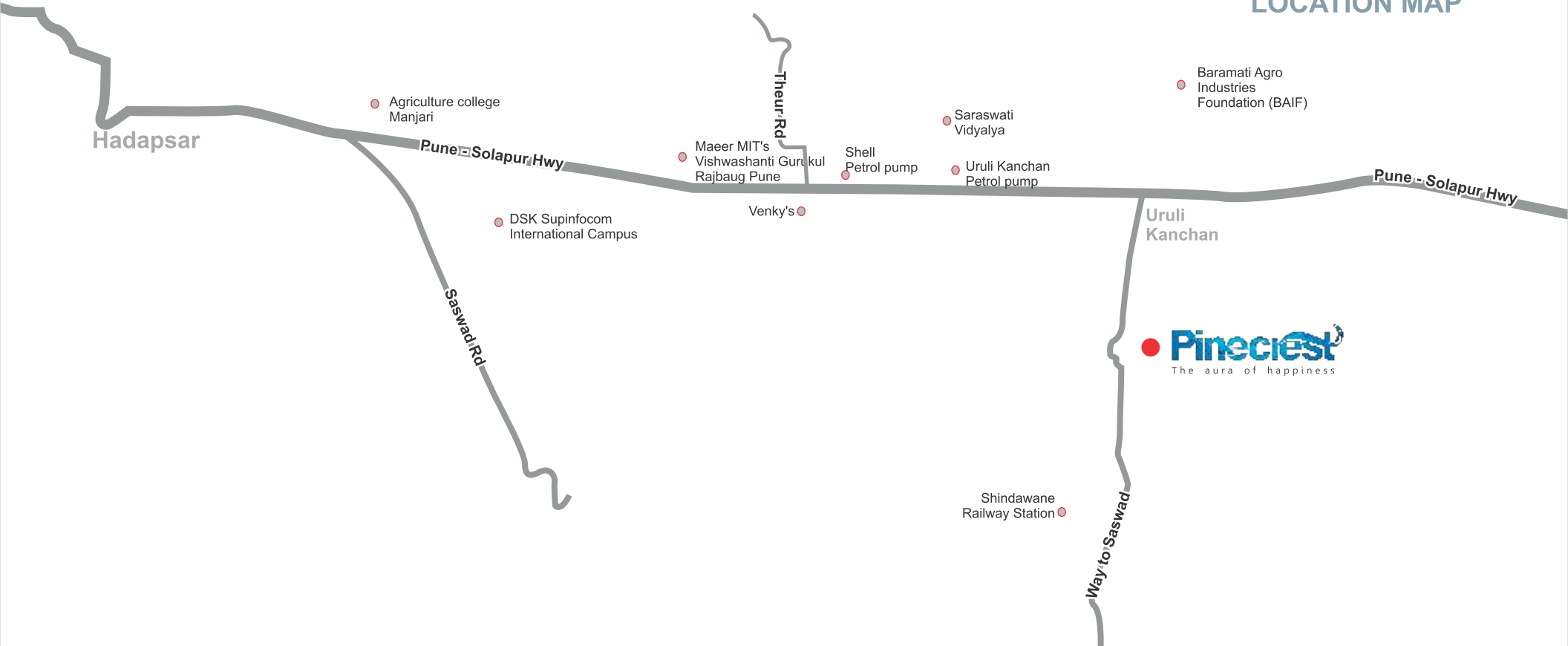
EXTERNAL AREA

Paving block / concrete road

YOUR VILLA ADORNED WITH
MODULAR KITCHEN WITH CHIMNEY | SHOWER PANEL



LOCATION MAP



Head Office :

E 19, Ganesh House, Near Nisarg Mangal Karyalay,
Markety Yard, Pune - 411 037.

Tel.: 020-24263340

Web : www.elloradevelopers.com



Site Add.:

Gat No. 751, 752, Near Talav, Shindawane Gaon,
Near Pune Solapur Highway, Urli Kanchan, Pune 412202

Call : 84110 51155, 84110 61155

E-mail : info@elloradevelopers.com

Credits

Architect

Arcon Associates

RCC Consultant

S.S. Kulkarni

Legal Advisor

Pankaj Bhandari