

NEELKANTH



G r e e n s

A health-scaped project



Welcome to Neelkanth Greens, welcome to the organic life. Where you are one with nature. Nestled amongst the scenic Yeoor Hills of Thane and spread across 14 acres of lush greenery, Neelkanth Greens truly epitomises a green lifestyle. Here contemporary architecture and modern amenities are intelligently grafted with the environment. So that you can live a comfortable and refined, yet green lifestyle.

The Neelkanth Greens strives to give you a modern yet affordable lifestyle, that comes complete with a yoga centre, lotus pond, botanical garden, vegetable garden, hammock area, club house and more importantly the peace and tranquillity of the hills. Besides, it's just 2 mins walking distance from a huge eleven acre park.

Yet another symbol of the Neelkanth Group's commitment to creating value and delivering quality. For over 70 years the Neelkanth Group, earlier known as Velji Harkha Patel and Sons, has been known to create landmarks, be it the Airport runway, KLM Airlines Hotel, Mumbai's Tardeo AC market or the Neelkanth Woods and Neelkanth Gardens.

Just like any other Neelkanth project this one too is built as a community, much more than mere houses. Where you have the liberty to choose from an array of specifications to suit your lifestyle.

This is Neelkanth Greens, where nature is your home.



This is an artist impression of Neelkanth Greens complex

COMMON COMPLEX AMENITIES

- Health-scaped podium garden with edible, medicinal, aromatic and various other flowering / non-flowering plants
- Amphitheater
- Toddlers play area
- Children's play area
- Jogging track
- Artificial water bodies
- Landscaped lawns
- Acupressure pathway
- Tree-house
- Seating areas for senior citizens
- Rain water harvesting
- Sewage treatment plant





BUILDING AMENITIES

- Earthquake resistant design
- Well decorated and ergonomically designed entrance foyer
- One wheel chair / first-aid kit / stretcher lift in each building for medical emergency
- Fully furnished society office





IN - FLAT AMENITIES

- Vitrified / equivalent tile flooring in all rooms
- Granite top kitchen platform with stainless steel sink and ceramic tiles up to 2 ft. height above platform
- Designer ceramic tiles for toilet
- Main entrance door – solid flush type with one side laminated with decorative beading & S.S. fittings
- Concealed wiring with adequate power points, wiring for cable TV, telephone & internet connection
- Concealed plumbing with good quality C.P. fittings
- Colour sanitary ware with quality plumbing fittings
- Geysers
- Ceramic tiles dado in bathroom up to door height
- Colour anodized / powder coated aluminum windows with tinted glass
- External grill / railing for bedroom and living room as per architect design
- Intercom security system
- Acrylic paint in all rooms
- Solar water heater
- Generator backup for two tubelights & one fan in living area



CLUB HOUSE AMENITIES

- Swimming pool with deck / children pool
- Jacuzzi
- Multi-purpose hall / badminton court
- Squash court
- Pool tables
- Table tennis / carrom room
- Air-conditioned state-of-the-art gymnasium
- Yoga / meditation room
- Massage room
- Terrace garden





*Close from everything you want,
Far away from everything you don't.*

LAYOUT PLAN



COMPLEX DETAILS

Neelkanth Palms complex comprises of 3 towers with multiple wings.

PHASE – I SOLD OUT

Classique

A Wing – Stilt + 16 floors

B Wing – Stilt + 15 floors

C Wing – Stilt + 14 floors

PHASE – II SOLD OUT

Royale

A Wing – Podium + Stilt + 21 floors

B Wing – Podium + Stilt + 19 floors

C Wing – Podium + Stilt + 17 floors

PHASE – III

Heritage

A Wing – Podium + Stilt + 27 floors

B Wing – Podium + Stilt + 27 floors

C Wing – Podium + Stilt + 27 floors





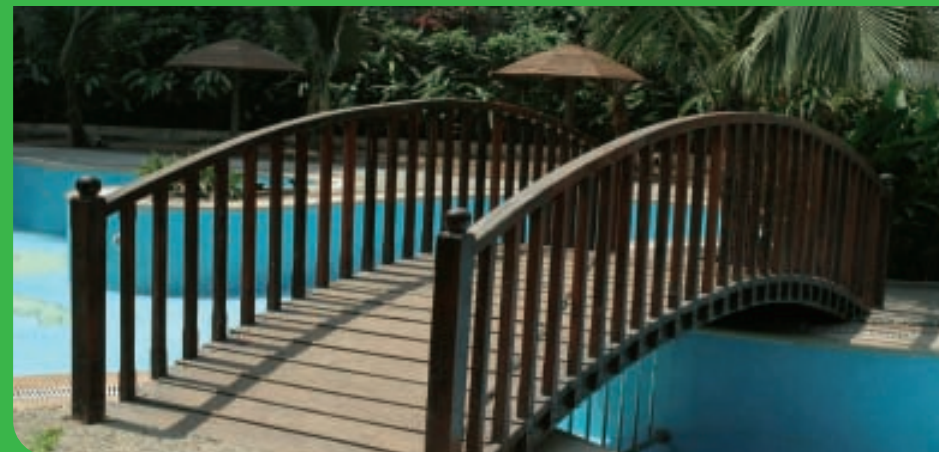
BUILDING AMENITIES

- Earthquake resistant design
- Well decorated and ergonomically designed entrance foyer
- One wheel chair / first-aid kit / stretcher lift in each building for medical emergency
- Fully furnished society office



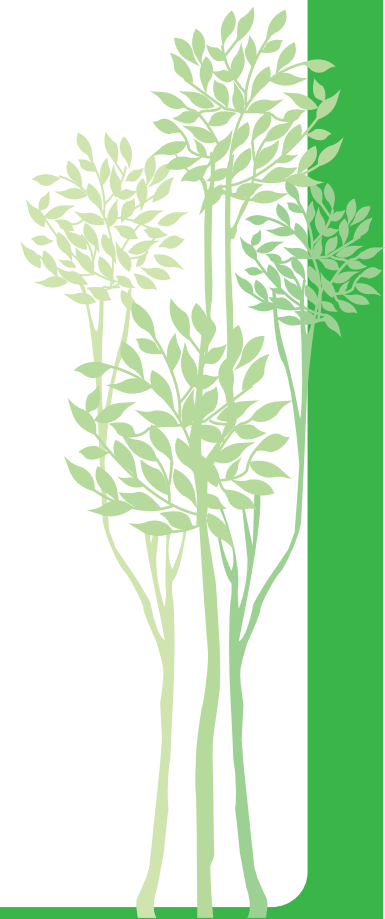


Actual Photographs



COMMON COMPLEX AMENITIES

- Club House
- Mound Lawn
- Jogging Track
- Resting Pavilion
- Zen Foundation
- Amphitheatre
- Fitness Plaza
- Water Fall
- Lawn
- Slide
- Pool
- Jacuzzi
- Tennis Court
- Cricket Pitch





CLUB HOUSE AMENITIES

- Swimming pool
- Multi-purpose hall / Badminton Court
- Squash court
- Snooker and pool tables
- Table tennis / carrom room
- Air-conditioned state-of-the-art gymnasium
- Yoga / meditation room
- Massage room

Actual Photograph



Actual Photographs



is your home



Site address: Next to Neelkanth Woods, near Tikuji-ni-Wadi, Manpada, Ghodbunder Road, Thane (W) - 400 610.
Tel.: 022 2584 1327/28/29, Mob.: 95942 46456



Site address: Nr. Tatvagyan Vidyapeeth and Cinemax Multiplex, Ghodbunder Road, Thane (W) - 400 610.
Tel.: 022 2589 9900



Corporate office address: Fine House, 5th floor, Anandji Lane, M. G. Road, Ghatkopar (E), Mumbai - 400 077.
Tel.: 022 2102 1080, E-mail: sales@neelkanthgroup.com, Website: www.neelkanthgroup.com