



Make The
Right Move



Cosy

Customized Living



Studio Apartments

Pashan, Pune



About

KUL KUBE

Presenting KUL KUBE Cosy...Customized...Living.

We are offering you 350 sq.ft. carpet area studio apartments conceptualized tailor made for your needs. Be it a cosy home or a convenient office KUL KUBE excels in both. Right sized spaces that efficiently let you in your own mood and avatar. It also comes loaded with KUL's trademark commitment to superior standards. It assures greater value on your investment.

KUL KUBE is located at Baner-Pashan Link Road, one of the most sought after residential destinations in town. It shares excellent connectivity to Aundh, Hinjewadi Info-Tech Park, Mumbai-Pune Expressway & all the prime landmarks in the western corridor of Pune. It also offers instant access to the lifestyle essentials like schools, colleges, hospitals, shopping malls and entertainment centres.



About

KUL KUBE Features

PROJECT FEATURES

- ❖ Adequate security features
- ❖ Additional plethora of amenities made available by the popular Symphony Club adjoining the KUL KUBE.
- ❖ Elegant entrance lift lobby.
- ❖ Two lift for each Building.
- ❖ Generator backup for lift, common lighting & pumps.
- ❖ Ample Parking

INTERIOR SPECIFICATIONS

FLOORING

- ❖ Vitrified tiles in entire flat with matching skirting.

DOOR AND WINDOWS

- ❖ Main door with ply jams and internal flush doors.
- ❖ Three track powder coated aluminum window with safety grills.

KITCHEN

- ❖ Black granite kitchen platform glazed tile dado of '2" height with S.S. sink.
- ❖ Provision for exhaust fan in kitchen

ELECTRICAL

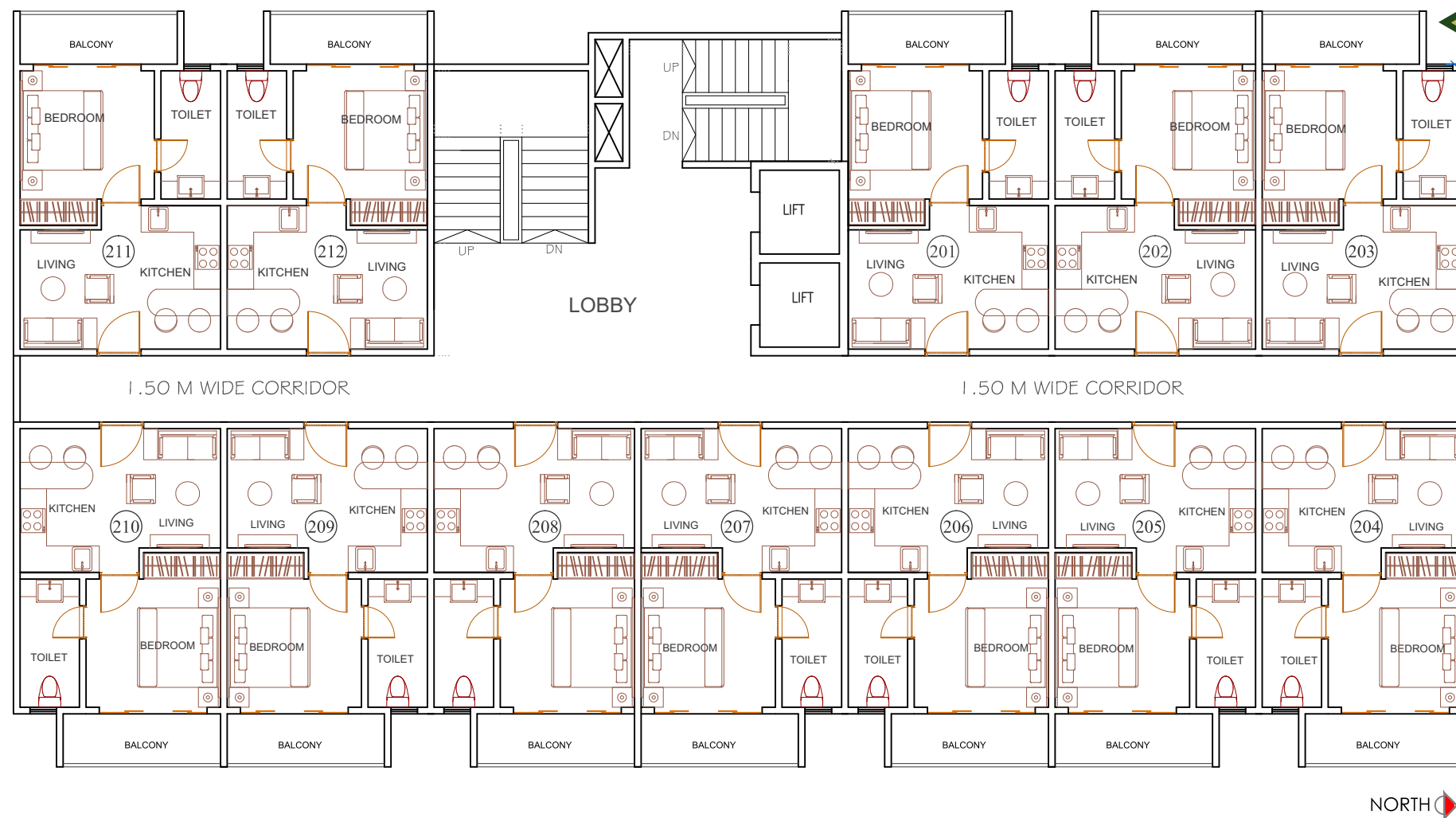
- ❖ Branded switches with a concealed copper wiring with M.C.B. control.
- ❖ Provision for T.V. & Telephone in living & bedroom.

TOILET

- ❖ Antiskid tiles flooring & glazed tiles dado upto 7' height.
- ❖ Concealed plumbing with hot & cold mixer unit.
- ❖ Provision for exhaust fan in toilets.

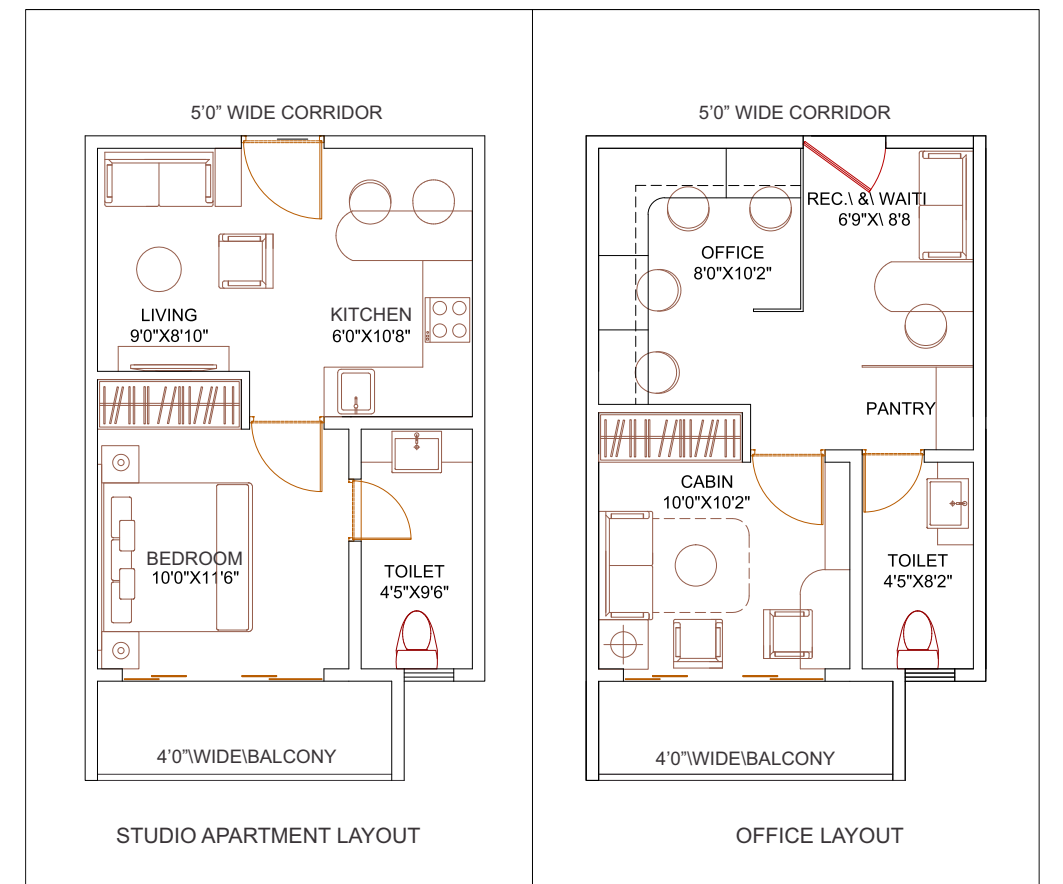
PAINTS

- ❖ Plastic emulsion paint in pastel shades (internal Paint) & acrylic Paint (externally).



Typical Floor Plan

Typical Unit Plan of office / residence layout





Advantage

KUL KUBE



About

KUL



Kumar Builders herald a legacy of trust and commitment. Having secured a place of pride over decades of experience in the real estate industry and numerous landmark projects across all four major cities in India, at Kumar Builders we build a simple promise. We cater to customers from all walks of life. And strive to bring even more into the family of Kumar Builders. After all, we don't just build homes. We build trust.

We Build Communities

KUL goes beyond creating landmarks of excellence and quality structures that are a benchmark for the industry. KUL aims to give back to the society and contribute its mite to make quality housing a reality for the masses and the underprivileged. Usefulness to Society is a characteristic that is ingrained in KUL's ethos and the company will leverage its four decades of experience in the industry to achieve its objective. The company already has a value system that cares for its workers and employees health and safety. KUL is today in the process of creating mass housing projects across the country and wishes to extend its influence in this sector.

For bookings and enquiries

73870 89993

or e-mail at sales@kul.co.in

Site Address : Symphony Club, Pashan Baner Link Road, Pune

KUMAR URBAN DEVELOPMENT LTD.

RESIDENTIAL | RETAIL | IT PARKS | TOWNSHIPS | EDUCATION

HEAD OFFICE : KUMAR BUSINESS CENTER, BUND GARDEN, PUNE 411 001

Tel : 020 - 4000 6000 | Website : www.kul.co.in



Disclaimer
The Plans, specifications, images and other details herein are only indicative and the Developer / Owner reserve its right to change any or all of these in its discretion subject to grant of approval from relevant authorities. This printed material does not constitute an offer, an invitation to an offer and/or commitment of any nature between the Developer/Owner and the recipient. The Developer's/Owner's website(s) and other advertising and publicity material include artist's impression indicating appearance of completed development. No warranty is given that the completed development will comply in any degree with such Artist's impressions. Cost, designs and facilities and/or specifications may be subject to change without notice.