

# || Sarvanga Sampurna Homes ||



2 & 3 BHK Apartments @ Baner

Explore the happiness within...

om bhaskayaya namah





**S**ara, the name in itself demonstrates beauty and charisma. Architecturally its a masterpiece, perfectly ventilated to transform your home into an oasis of colour and beauty. Large windows distribute the radiant natural light and fresh air, giving you a better view of the surroundings. The refreshing design has done away with the excess passages inside the house, that restricts movement, allowing you to breathe fresh air and appreciate lush landscapes with your family. Ample open space studded with greenery creates an enveloping yet open effect that welcomes you in.

**U**nwind and relax with a mug of coffee, cherishing the beauty inside out. Sara has produced for you and your loved ones a charismatic home, that is serene and comfortable.

2 & 3 BHK Apartments @ Baner







# Sara

Sara will always remind you of an exhilarating and a splendid journey of life. Located next to an urbane area, Baner, Sara is convenient accessibility and close proximity with IT Parks and day-to-day conveniences thrown together. A stroll around the chic neighborhood brings you to a tete-`a- tete with an elegant, self sufficient world with pristine beauty.

The provenance also takes care of the suave denizens of Sara with reputed hospitals, health clinics and schools in the vicinity.

At Sara you'll be gifted with true world class perfection and comfort. Sara is a concoction of comprehensive thoughts and transcendental results. Priding in a self sufficient cosmopolitan neighborhood, Sara promises every day to be a soiree.





# Sara

**W**alk into Sara and one of the first things you'll notice is humongous space and colossal beauty. With an array of unique and flamboyant 2 & 3 BHK apartments, the place is downed with gusto. Its said that a home is where the heart is! Your heart will definitely pound in a place where you can saunter on lush green gardens, gormandize on homemade food in sumptuous kitchens and spike up your evening. So arrive at Sara and get ready to be dazzled! Its not for the less-satisfied. Its for those who yearn for more!

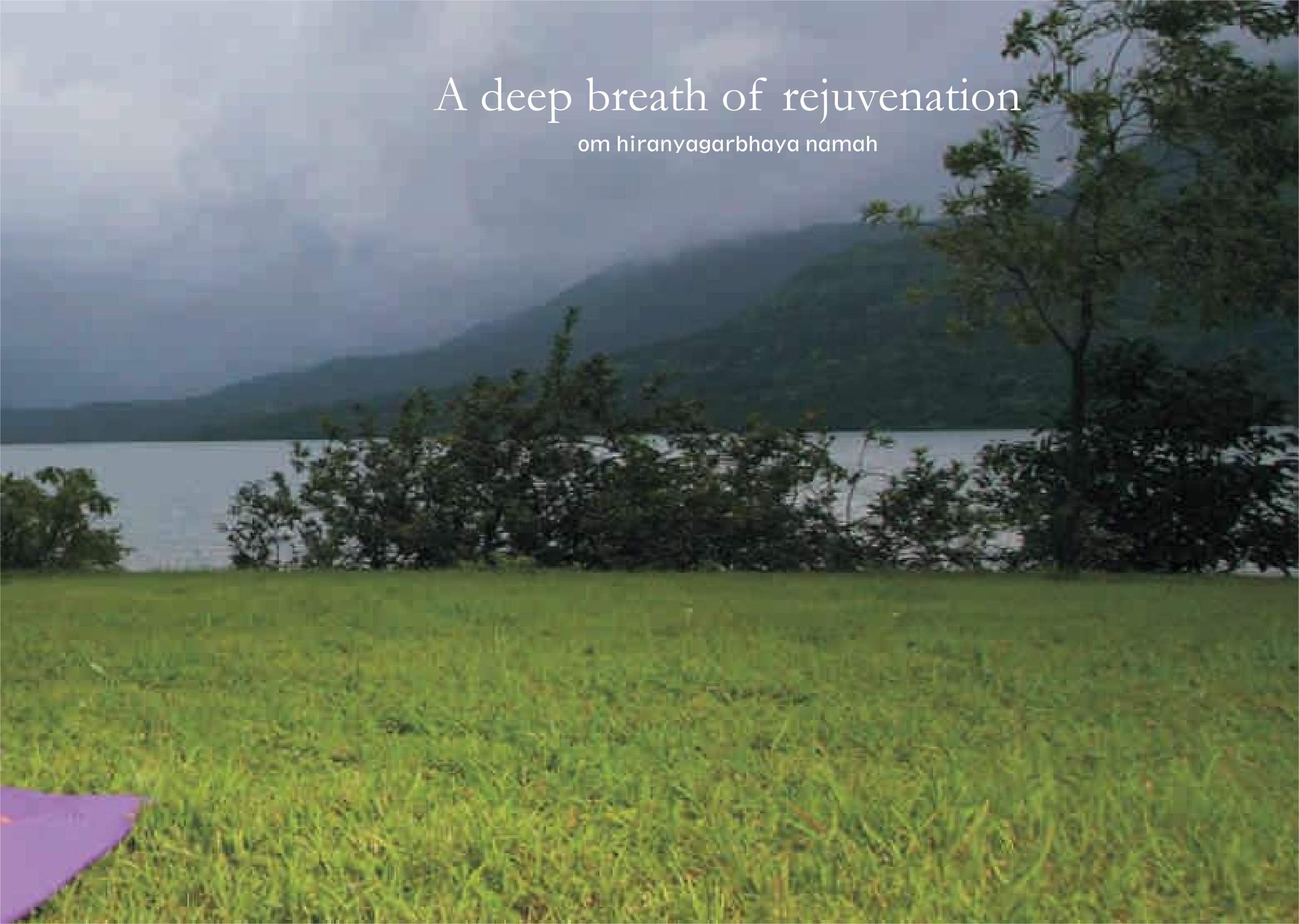






A deep breath of rejuvenation

om hiranyagarbhaya namah





## Amenities

- ✦ Yoga and meditation hall
- ✦ Jogging track
- ✦ Children's play area and pit
- ✦ Designer landscaped garden
- ✦ Multipurpose hall
- ✦ Reading / Study room
- ✦ Indoor games
- ✦ Sit outs
- ✦ Grand entrance lobby
- ✦ Two lifts for each building
- ✦ Common smoke detector
- ✦ Fire fighting system for each building
- ✦ Ample lighting for common areas
- ✦ Provision for solar system
- ✦ Pest control at the time of possession
- ✦ Well Paved internal roads

## Specifications

### RCC

- Earth quake resistant structure

### Brickwork

- 4" internal and external 6" thick

### Plaster

- External sandfaced & internal neeru finish

### Doors

- Decorative main door
- Good quality internal flush doors
- 2 track powder coated aluminum doors for terraces
- Marble door frames for toilets

### Windows

- 3 track powder coated aluminum windows with mosquito net, safety grills & marble sill

### Kitchen

- Granite kitchen platform with stainless steel sink
- Designer wall tiles
- Provision for exhaust fan
- MCB & ELLB circuit breaker

### Toilets

- Concealed plumbing
- Designer glazed tile dado
- Provision for geysers & exhaust fan

### Flooring

- 2x2' vitrified flooring
- 12"x12" antiskid tiles in toilets and terraces
- Washing place / dry balcony
- Arrangement for washing machine & washing place

### Electrification

- Concealed electrification
- Anchor Roma or equivalent switches
- Adequate electrical points in every room

### Painting

- Internal oil bound distemper
- External water proof cement paint

## Landscape Features

"Landscape for all" - Designed functional spaces for all the age groups.

- Temple,
- Acupressure pathway,
- Story telling plaza,
- Newspaper reading spaces
- Gathering place
- Expression wall

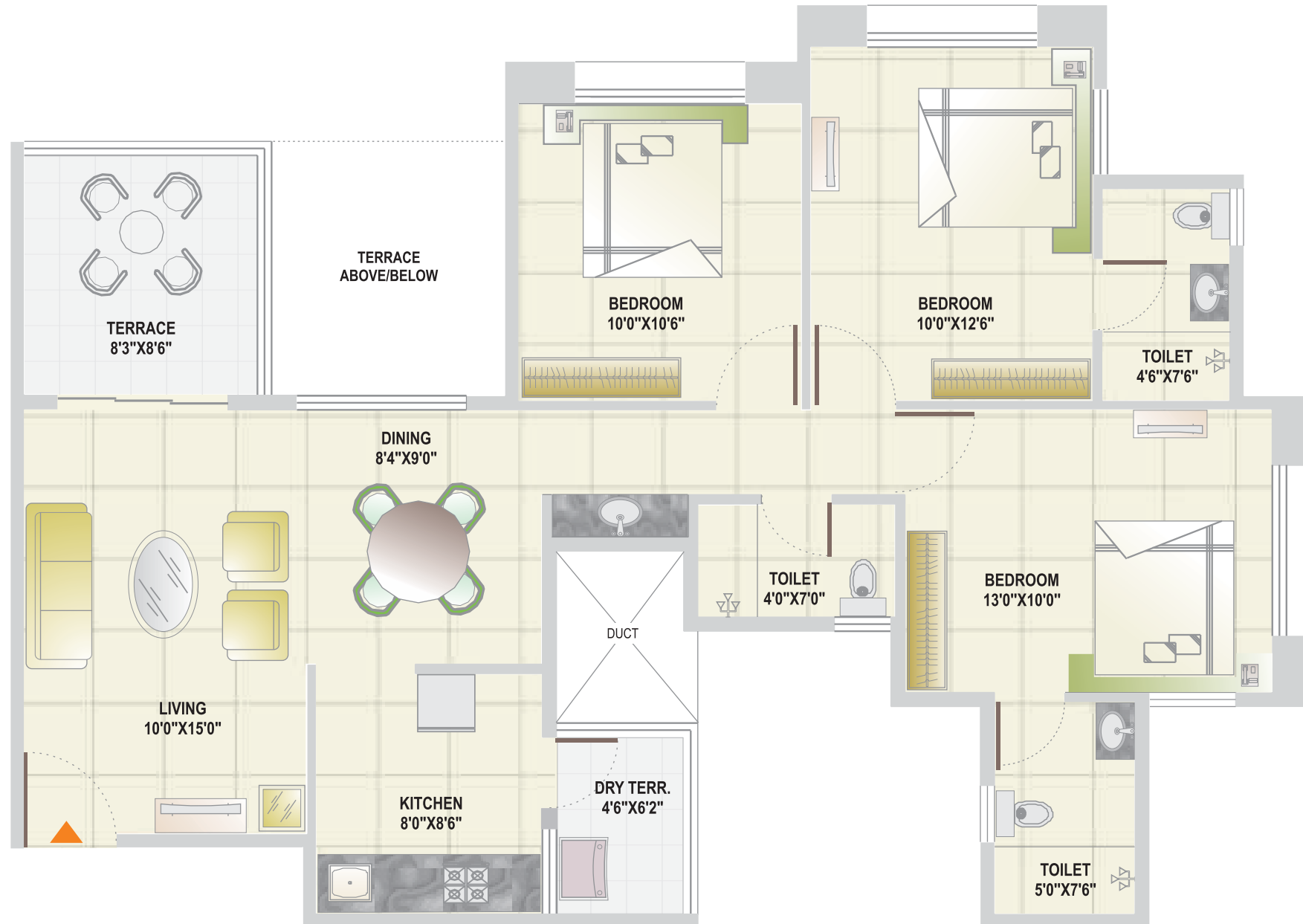
Green to hard paved ratio is worked out to enhance the actual usage pattern of landscaped area.

Interface of water with green space creates a relaxing and refreshing environment throughout the day.

Maximized pedestrian pathways and yoga lawn promotes healthy environment.

Fire safety tender access is ensured throughout the housing.

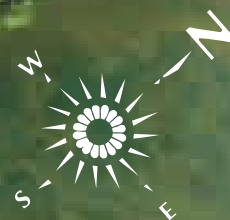




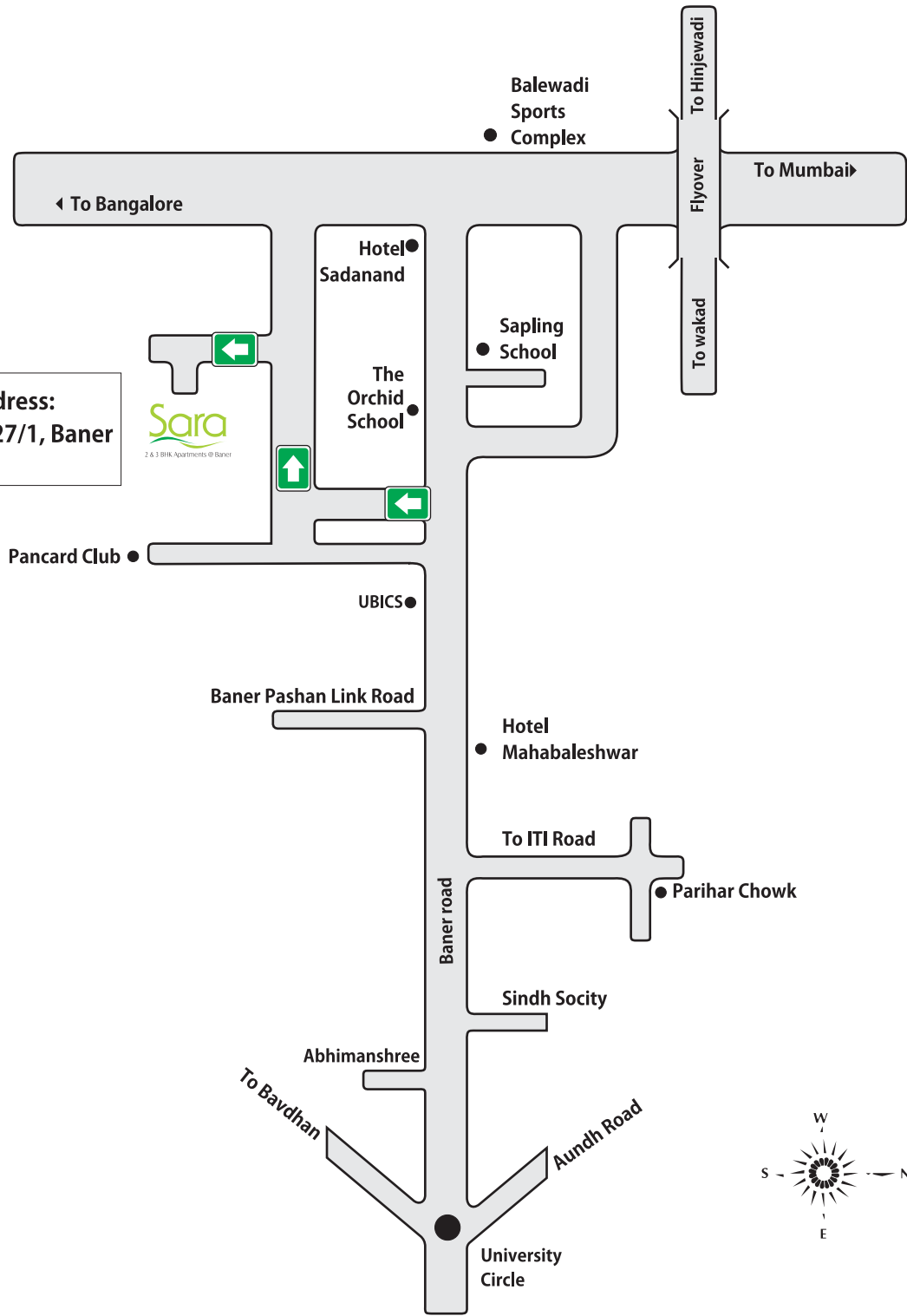
Type 3 BHK



Type 2 BHK



Site Address:  
Sr. No. 27/1, Baner  
Pune



LOCATION MAP

MAP NOT TO SCALE



### For Bookings:

Call: 91-97307 80808 / 91-98606 40000 [www.arpl.in/sara](http://www.arpl.in/sara) • sms: arpl to 54646

A Sarvanga Sampurna Project by:



501, Karan-Tej Bonita, VD Deshmukh Path (CRISIL Lane),  
off Ghole Road, Shivajinagar, Pune 411005  
**Tel. : 91-20-25533040/25533050 Fax: 91-20-25520440**  
**Email: sales@arpl.in**



1196/b, Shrishti Chambers, First Floor,  
Office No.2, Ghole Road, Pune 411005.  
**Tel.: 91-20-225510311 Fax: 91-20-255100313**  
**Email: parthdev@vsnl.net**

Note : The images and material contained in the Brochure are conceptual illustrations. Only the Actual Agreement (to be entered into between the flat purchaser and the developers), shall be binding on the Parties and the actual layouts, and specifications of the individual flat and any amenities to be provided, stated therein shall be final and conclusive of the agreed terms, offered to the Purchaser by the Developer. The Developer reserves all rights to make alterations, modifications, and changes in the sanctioned plan, layout specification, flats/units, elevations, designs, and amenities that will be made available in the project.