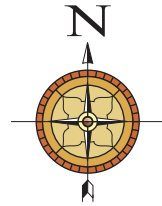


Location Map



Neighborhood

Vega city Mall	- 100 Feet
Infosys	- 0.5 Km
Shoppers Stop	- 0.5 Km
Jayadeva Hospital	- 1.0 Km
Appollo Hospital	- 0.5 Km
Wockhardt Hospital	- 0.5 Km
Honeywell	- 1.0 Km
IIMB	- 1.0 Km
Jayanagar	- 4.0 Km
MG Road	- 5.0 Km

Site Address

Dollars colony, BTM Layout, Bangalore

Visit our website

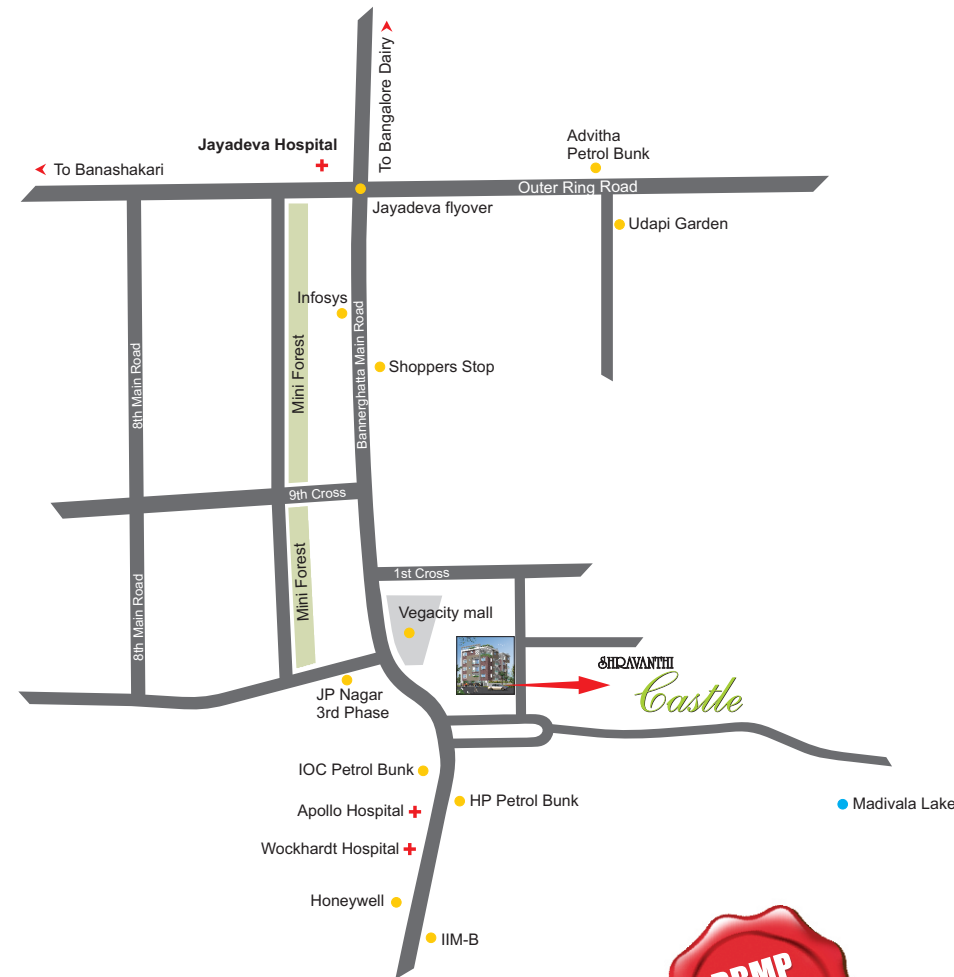
<http://www.shravanthigroup.com>

E-mail: enquiry@shravanthi.in

Corporate Office:

SHRAVANTHI SHELTERS
Promoters ■ Builders ■ Developers

'Shravanthi Chambers', # 290/41, 38th Cross,
10th Main, 5th Block, Jayanagar, Bangalore - 560 041.
www.shravanthigroup.com
Telefax: 22445889 / 42181588
Mobile: 98459 41217 / 98459 41214



SHRAVANTHI
Castle

Architect



Structural
PERI STYLE
Rajajinagar, Bangalore.

CREDAI
BENGALURU

Disclaimer: Furniture layout shown in the brochure is indicative of how the unit may be used, No furniture, landscape, amenities or accessories show in the visual are provided with the apartments. All floor plans, layout plans, building elevations, specifications, dimension, boundaries, design, height, number of floors, measurement, location and amenities are indicative and are subject to change as per the discretion of the company or subject to changes by Competent Authority. Revision, Alternation, Modification, Addition, Deletion, Substitution or Recast if any may be necessary. Amenities as depicted are proposed to be part of New Town, DLF BTM Extn. Subject to terms and Conditions.

SHRAVANTHI
Castle

SPACE...
DESIGNED BY YOUR DREAMS



Know Shravanthi Shelters

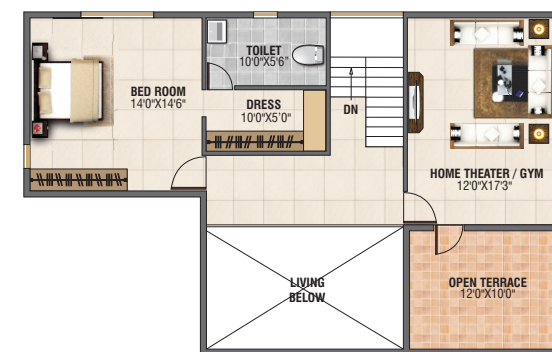
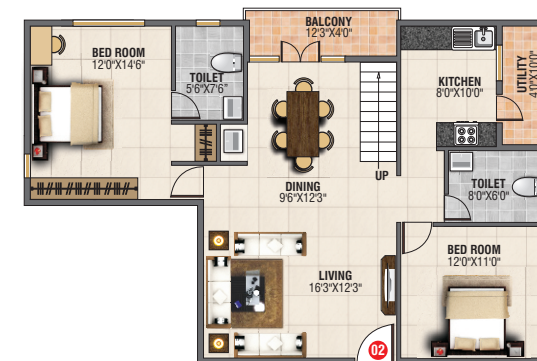
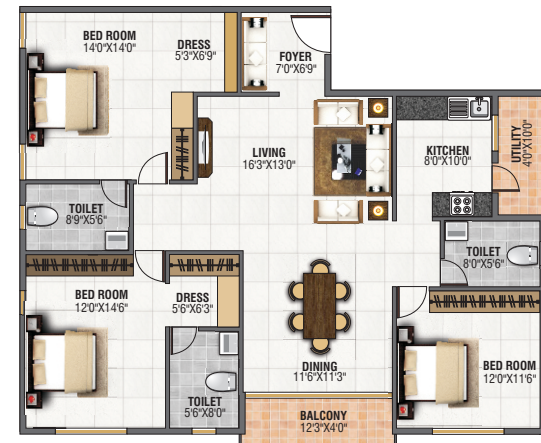
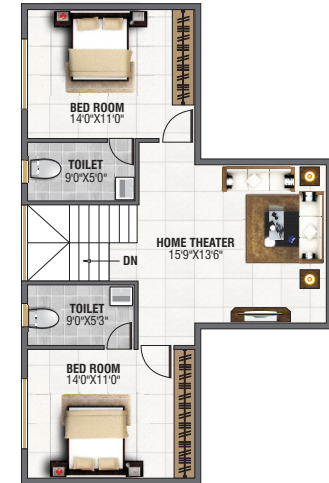
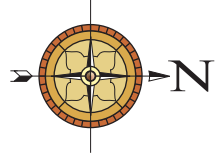
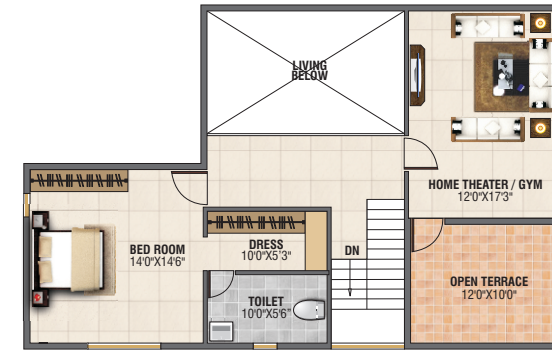
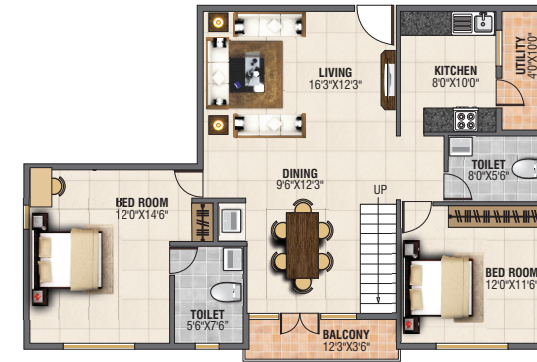
When designed thoughtfully, space can be converted from nothing to places that stay in your heart. **Shravanthi Castle** is one such place.

Shravanthi Shelters Is a leading real estate company based in Bangalore, which over the years has gained reputation and won accolades in property development. we have developed approximately 2 million square feet of real estate and executed several international standard projects.

Our team of competent and creative architects and engineers are committed to building the future, creating new standards of quality living. We offer you a variety of choices in residential property. From smaller apartments to larger homes, We have something for everybody. We provide high quality, high value housing solutions of the finest architectural standards through our focus on strong project execution and a customer centric approach. Our vision has prompted us to create a living environment that lets you live your life in peace and integrity.

At **Shravanthi Castle**, homes are more than homes; it is a nurturing space where life blooms in tranquility. A world unto itself, Richmond Pride is self-contained, offering you world-class amenities that give you a lot of recreational options. The facilities inside the complex, its ambiance & the location make it an exceptional living space.







SPECIFICATIONS:

Structure:

RCC frame structure with concrete block masonry walls.

Flooring:

Italian Florentine marble for Living & Dining,
Vitrified tiles / Granite for Kitchen & Bedroom,
Vitrified tiles for Bathroom & Utility,
Engineered wooden flooring for the master bedroom.

Doors & Windows:

Entrance door in teak wood panels - Bedroom and toilet doors to be in flush shutter of approved make - UPVC windows of approved make.

Painting:

Internal painting-Royal touch emulsion paint of approved make(Jotun/ Asian/Berger) and External painting-Weather shield coat of approved make.

Kitchen:

Modular kitchen of a approved reputed brand with a provision for refrigerator.

Utility:

Granite counter with stainless steel sink provided,
Provision for washing machine, dryer, dishwasher and iron board.

Toilet fittings & Accessories:

Ceramic glazed tiles dado up to 7'0" height,
Hot & cold mixer unit of ISI make or equivalent for shower in all the toilets,
Provision for geyser & exhaust fan.

Lift:

6 Passenger Lift of Standard make.
Elegant Lift lobbies with cladding up to the lintel level on Lift side wall.

Hardware:

Hardware for doors shall be brushed finish of approved make
Main door shall be provided with multi locking system.

Plumbing and Sanitary :

Sanitary fittings - EWC with concealed cistern of Duravit / Kohler or equivalent make,
Plumbing fixtures- Jaquar or Equivalent,
Counter top basins or counter sunk basins,
Pipes- PVC pipes with pressure tested plumbing.

Electrical:

One TV point in the living room & in Master bedroom,
Telephone points in main bedrooms & Living area.

CCTV:

CCTV & Video door phone system.

Intercom System:

Intercom facility from each apartment to security room & to other apartments.

SHRAVANTHI *Castle*

GROUND & FIRST FLOOR TYPICAL FLOOR

TYPE 1 : (3 BHK + 3 TOILETS)

TYPE 2 : (3 BHK + 3 TOILETS)

SECOND FLOOR – DUPLEX

TYPE 1 : (3 BHK + 3 TOILETS + HOME THEATER / GYM
+ ATTACHED OPEN TERRACE AREA)

TYPE 2 : (3 BHK + 3 TOILETS + HOME THEATER / HALL

TYPE 3 : (3 BHK + 3 TOILETS + HOME THEATER / GYM
+ TERRACE GARDEN

