



Builders & Developers

SLS Developers

Sy No. 74/4, 73/2, 74/2 & 74/6, Horamavu, Bangalore

Ph. : 96324 03966, 96324 03977

Website : www.slsdevelopers.com



Architects

Aslam Architects & Interior Designer Pvt. Ltd

Bengaluru - 560 001, Tel: 22259342

E-mail: aslam2006@gmail.com

Hyderabad - 500 082. Ph: 040-66665141, 66665402.

E-mail: aslam2006@gmail.com

Structural Engineers

D. Srinivas & Associates

Designed by FMV : +91- 9246542471 www.fmv.org

NATURE ABODE

Note: This brochure is only a conceptual presentation of the project and not a legal offering. The promoters reserve the right to make changes in the elevation, plans and specifications as deemed fit.

YOUR GATEWAY TO A WHOLE NEW LIFESTYLE

Spread over 5 acres and 16 guntas of verdant greenery, 'SLS Spencer' villas are the personification of grace and beauty. Built on vastu compliant plots, each villa comes with its own cozy little garden and an attitude to boot.



SLS
Spencer



AMENITIES :

- Swimming pool
- Club House
- Gymnasium
- Kids Play Area
- Park (Landscaped garden)

‘SLS Spencer’ villas are situated close to Banaswadi Junction of Outer Ring Road at Horamavu and is one of the most picturesque areas of the city. A place where the chirping of birds is a chorus to the whispering trees, where the gold of the sunset is a lovely counterpoint to the moon-washed nights and pristine-pure days.



A large open space within the gated community is entirely given over to a landscaped garden and children's playground. Where a variety of equipment like swings and see-saws are planned.

A PICTURE OF BEAUTY



LEISURE PLEASURE



Swimming Pool

... A CLUB HOUSE TOO

- Gymnasium
- Multi purpose Hall
- Indoor games





LAYOUT PLAN

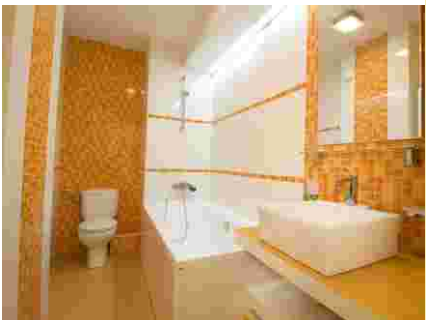
LAKESIDE PARADISE !
NEED WE SAY MORE

Gated community with round-the-clock security. And what's more - located on the periphery of a scenic lake.



SLS
Spencer

EAST FACING STREET VIEW



Ground Floor Plan



First Floor Plan



Second Floor Plan



TYPICAL
EAST FACING
UNIT

Area Statement

	Total (Sft)	Garden/Terrace (Sft)
Ground Floor	1137	-
First Floor	1008	49
Second Floor	577	424
Total	2722	473



WEST FACING STREET VIEW



Ground Floor Plan



First Floor Plan



TYPICAL
WEST FACING
UNIT

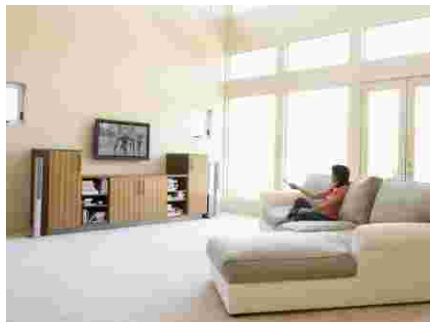
Area Statement

	Total (Sft)	Garden/Terrace (Sft)
Ground Floor	1122	-
First Floor	1016	44
Second Floor	647	343
Total	2785	387

Second Floor Plan



NORTH FACING STREET VIEW



Ground Floor Plan



Second Floor Plan



First Floor Plan



TYPICAL
NORTH FACING
UNIT

Area Statement

	Total (Sft)	Garden/Terrace (Sft)
Ground Floor	1263	-
First Floor	1061	53
Second Floor	560	468
Total	2884	521



SOUTH FACING STREET VIEW



Ground Floor Plan



First Floor Plan



Second Floor Plan



TYPICAL SOUTH FACING UNIT

Area Statement

	Total (Sft)	Garden/Terrace (Sft)
Ground Floor	1306	-
First Floor	1150	63
Second Floor	619	498
Total	3075	561





STRUCTURE

R.C.C. framed structure with Porotham clay brick / Cement concrete solid blocks.

FOYER / LIVING / DINING / FAMILY

Superior quality vitrified flooring and skirting.
Walls / ceiling are painted with Premium emulsion.

BEDROOMS

Laminated Wooden flooring.
Walls / ceiling are painted with Premium emulsion.

TOILETS

Superior quality ceramic tiles for flooring and walls up to false ceiling height.
Premium emulsion paint for ceiling.
Kohler/Jaguar or equivalent fittings.
High quality fittings for all doors.



SPECIFICATIONS

KITCHEN

Superior quality ceramic tile flooring and dado tiles 2 feet above the granite platform.

STAIRCASE (INTERNAL)

Superior quality granite treads and risers.
SS railing.

BALCONIES / UTILITY AREAS

Superior quality ceramic tile flooring and skirting.
External walls painted with external paint.

JOINERY / DOORS

Frame made of Akshay wood or Equivalent.

SHUTTERS

Main Door Shutter : Akshay wood & all internal doors shutters are made of Moulded panel door shutters.

WINDOWS

UPVC or Equivalent.

FITTINGS

High quality fittings for all doors.



THE IDEAL LOCATION FOR YOU AND YOUR FAMILY



SLS Spencer is situated amidst sylvan greenery. An oasis of peace and serenity, yet, most vital locations are nearby, such as a host of schools and colleges, dhabas and restaurants, shops and malls - while the hot spots of the city are close by !

PRETTY CLOSE TO IT ALL

Located in Horamavu beside Agara Lake

Near to Banaswadi Junction of Outer Ring Road

