



SOBHA PALLADIAN

Facing HAL Aerodrome, Yemalur Main Road
Off Old Airport Road, Bangalore - 560037.
www.sobha-palladian.com

SOBHA DEVELOPERS LTD.

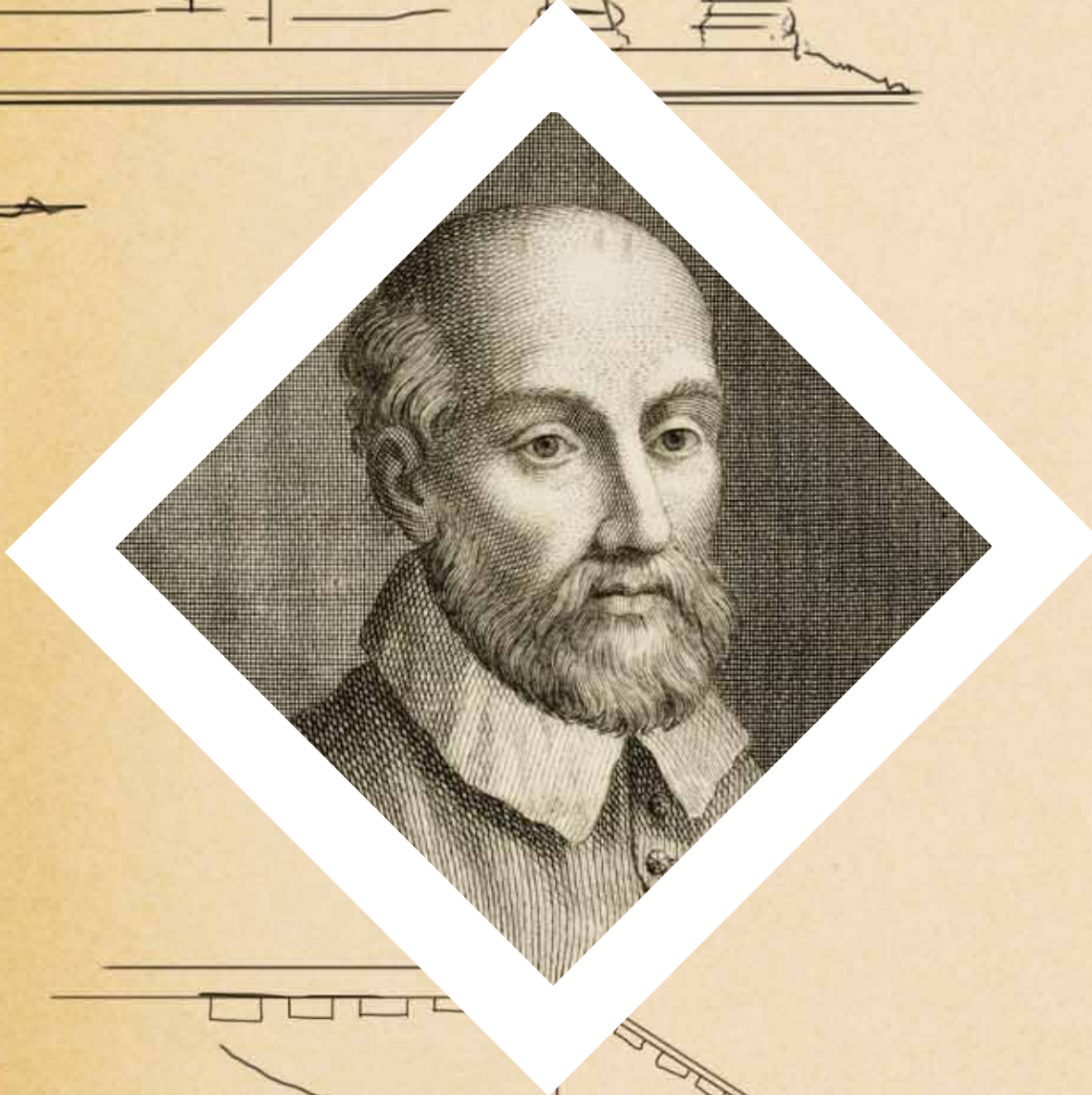
Sarjapur - Marathahalli Outer Ring Road (ORR)
Devarabisanahalli, Bellandur Post
Bangalore – 560103.
Tel : +91 80 43490000
Fax : +91 80 49320444
Email: marketing@sobha.com
www.sobha.com



EXPLORING SOBHA PALLADIAN

- 1 | The Inspiration
 - 7 | The Masterpiece
 - 13 | The Neighbourhood
 - 25 | Indulgences
 - 39 | The Residence
 - 49 | Architectural Plans
 - 61 | Specifications
 - 65 | The Sobha Story
-

The Inspiration



Andrea Palladio

1508-1580

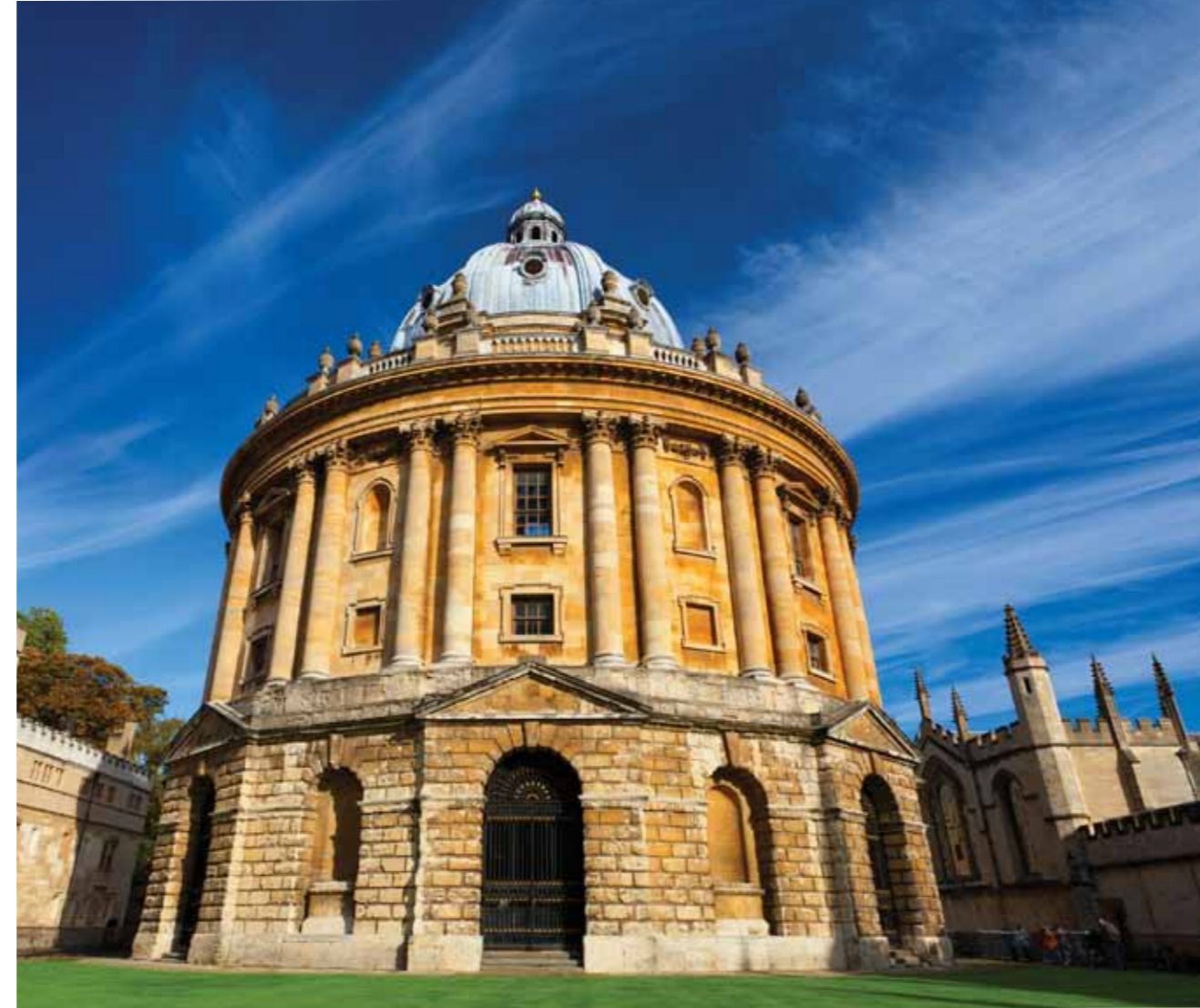
- Lived in : Venice, Italy
- Built : Villa Barbaro
Villa Capra "La Rotonda"
Basilica Palladiana
Church of San Giorgio Maggiore
- Wrote : The Four Books of Architecture
(I Quattro Libri dell'Architettura)

Andrea Palladio's works have inspired countless architectural marvels all over the world. Many believe that Palladio was the single most influential person in the development of Western Architecture. As an architect, he firmly believed in maintaining balance, proportion and harmony in all his projects.

At Sobha, we have always been inspired by such influential people and try to incorporate their ideas and philosophies in our own works. As a reverence to Palladio, we at Sobha are building an iconic landmark that will be based on harmony and symmetry – the fundamental principles of architecture, as defined by this great architect.



Chiswick House, London. Built in 1729.



The Radcliffe Camera, Oxford. Built in 1749.



The Temple of the Four Winds, Castle Howard, North Yorkshire. Built in 1738.



Infosys Global Education Centre, Mysore. Built in 2002.

Palladio's style of architecture is so distinct and definitive that a building designed in such a manner clearly conveys it to be one of influence and power. Over the years, a great number of buildings have included Palladio's grand columns and intricate arches in their designs. Many of these buildings are of immense social and political importance.

Masterpieces

The Global Education Centre in Mysore is a landmark constructed by Sobha for Infosys Technologies. The building, especially the façade, has been inspired by the works of Palladio and is considered to be an architectural masterpiece.

The Masterpiece



104 Sketches.
258 Expressions.
797 Man-hours.
One Architectural Marvel.

Design

Sobha Palladian has been built keeping in mind Palladio's principles of balance and proportion. The clubhouse here has been designed with great intricacy and has an elaborate façade. The façade has a huge portico lined with majestic pillars that make it a true reflection of Palladian architecture. This sophisticated design gives an impression of exquisite grandness and lends a regal touch to Sobha Palladian.

Sobha Palladian is a home for those influential members of society who have earned their glory, their success and their luxuries. And it is understandable that such distinguished individuals would like to share their neighbourhood with those of equal stature. These are those powerful and successful individuals who have achieved triumph in life and deserve to reside in a home that is nothing less than a masterpiece.











Persona

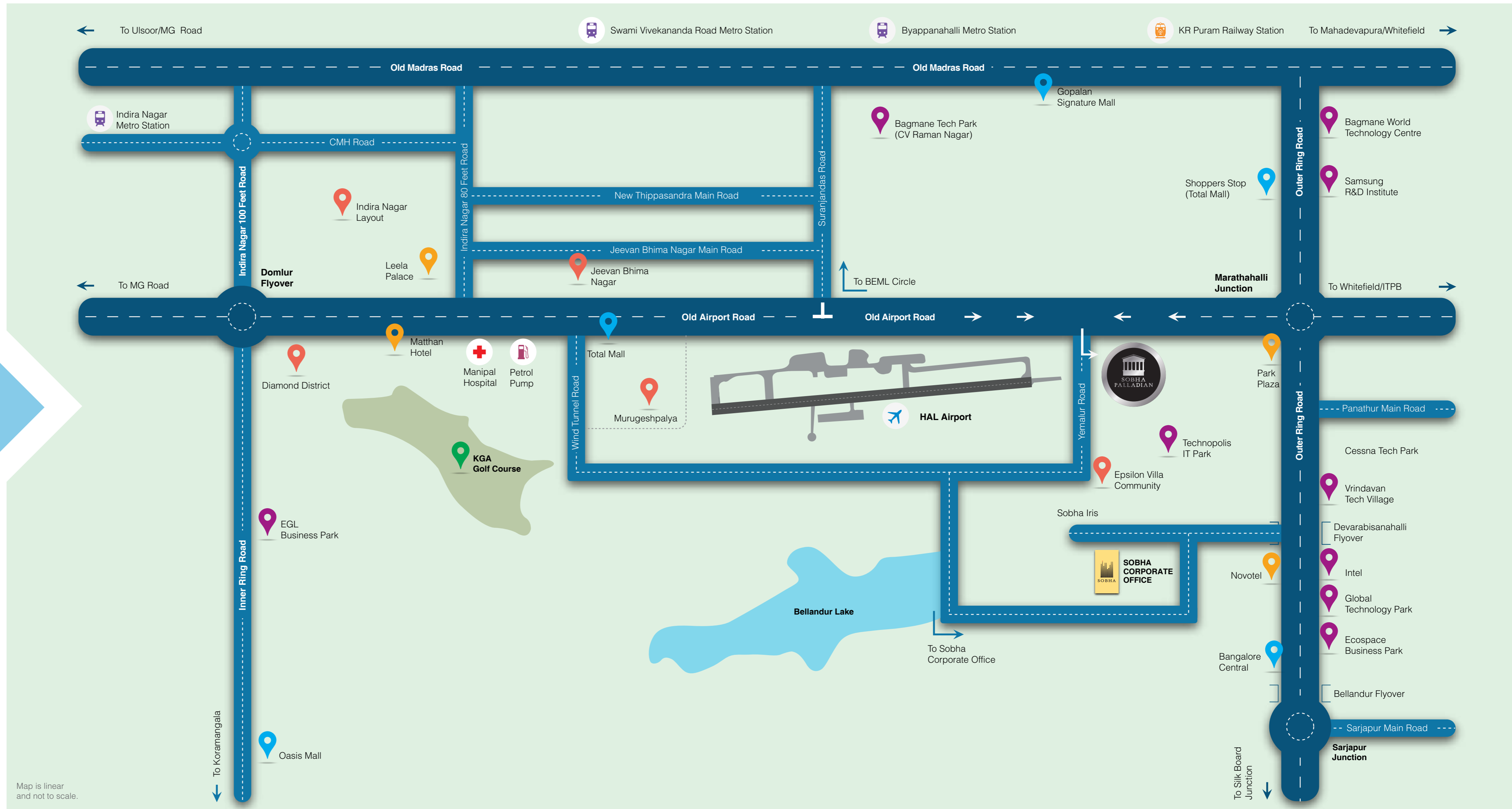


The Neighbourhood

Sobha Palladian is situated just 100 metres off the famous Old Airport Road, facing the HAL Aerodrome, a prestigious landmark in Bangalore. It is not many who can boast of living in such a prominent neighbourhood that is close to all the premium places you'd like to visit. This architectural masterpiece is situated amidst the heart of the city, yet nestled in 5.25 acres of serene lush greenery, which makes it an immensely desirable and peaceful place to stay. This wonderful location and beautiful surroundings truly complement the architectural wonder that is Sobha Palladian.

Location

-  HOSPITAL
-  PETROL PUMP
-  AIRPORT
-  METRO STATION
-  RAILWAY STATION
-  LOCALITY
-  WORKPLACE
-  HOTEL
-  SHOPPING & ENTERTAINMENT
-  LEISURE





Bagmane Tech Park

A premium corporate office complex which houses offices of Motorola, Texas Instruments, Cognizant Technology Solutions, Volvo, LinkedIn and many other big corporations.

6.6 Km, 14 Min



ITPB (Formerly ITPL)

This is one of India's largest technology parks and includes offices of major corporate giants like Tata Consultancy Services, Accenture, General Electric, Dell, IBM, Intel, Oracle and many others.

9.2 Km, 20 Min



Cessna Tech Park & Ecospace Business Park

These two corporate office complexes located very close to each other house offices of Ernst & Young, Citigroup, Thomson Reuters, Societe Generale and a few others.

4 Km, 7 Min



EGL

A famous office complex located on the inner Ring Road which includes offices of multinational companies like Yahoo, Dell, McAfee, IBM and many others.

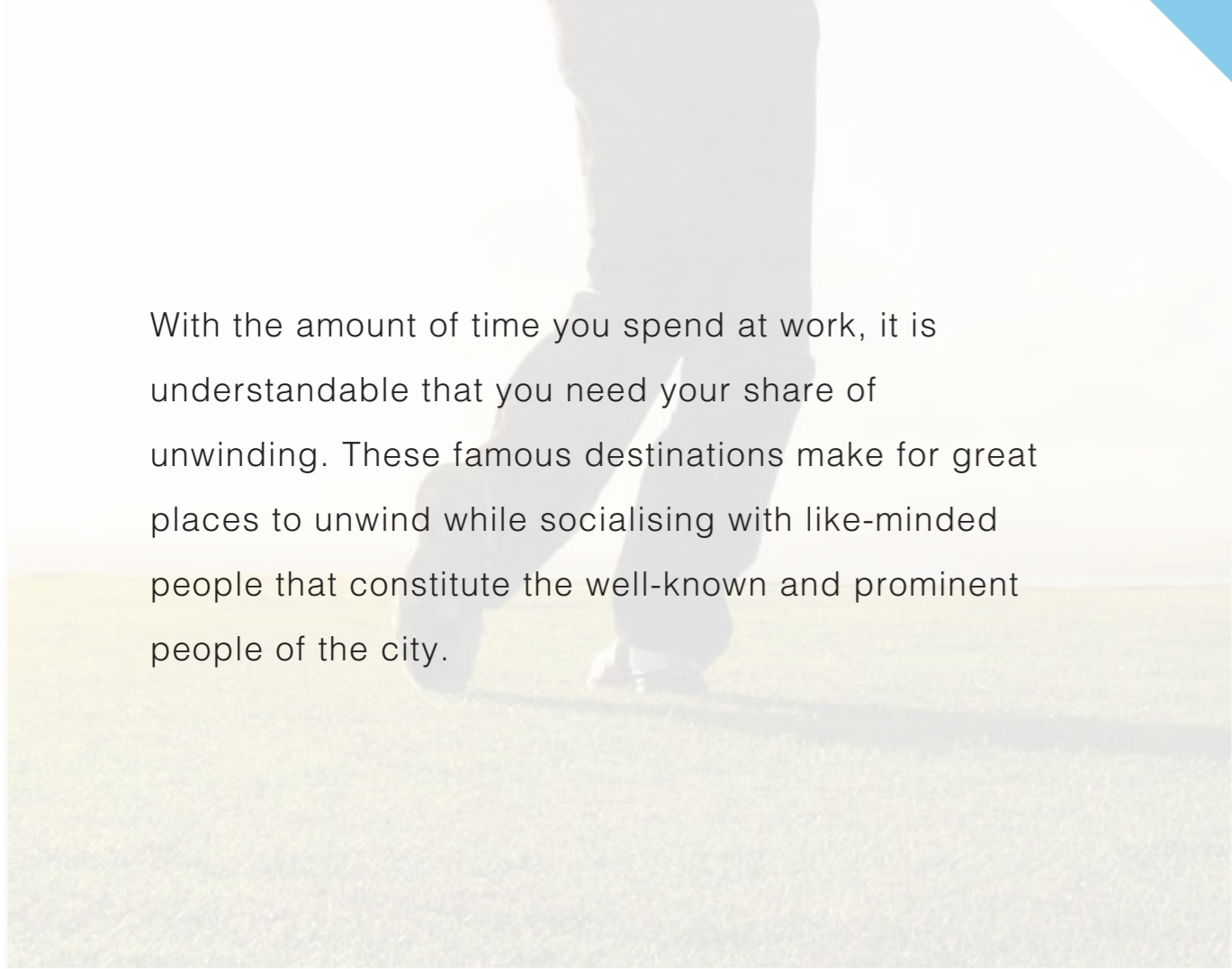
6.5 Km, 14 Min



Workplaces

Work can be exhausting, but travelling need not be. With major business parks located at close and almost equal distances from Sobha Palladian, you need not spend hours travelling every day, wherever your office might be.





Leisure

With the amount of time you spend at work, it is understandable that you need your share of unwinding. These famous destinations make for great places to unwind while socialising with like-minded people that constitute the well-known and prominent people of the city.

Bangalore Club

One of the oldest and most exclusive clubs in the city known for its colonial architecture and a host of facilities.



12 Km, 24 Min



KGA Golf Course

An 18 hole, 7228 yard course which is one of South India's most popular golf courses.



6.2 Km, 13 Min

Indira Nagar Club

It hosts many literary and cultural activities and includes a few sports facilities as well as a library.



6.7 Km, 15 Min



UB City

Bangalore's largest commercial complex includes a shopping mall, serviced apartments and corporate offices.



12 Km, 24 Min



Leela Palace

Designed like a king's palace, the imperial touch gives it an aura of unmistakable grandness.



4.6 Km, 8 Min



Vivanta By Taj MG Road

An urban relaxation hotel which is known for its mix of classic and contemporary elements.



8.9 Km, 17 Min



Oberoi

Winner of a number of hospitality awards, it is well known for its exceptional service.



8.9 Km, 17 Min

Zuri

A modern business hotel with a refreshing style and warm hospitality.



9.6 Km, 22 Min



Dining

Be it going out with family, friends or business acquaintances, we know you prefer to dine at the most exquisite restaurants and hotels in town. These uber luxury hotels, which are known internationally for their hospitality and superb cuisine, are merely a short drive away from your luxury condominium.





Shopping & Entertainment

Shopping and recreation are an important part of a family's lifestyle. And going out for shopping can be quite time-consuming at times, especially if you have a shopaholic in the house. But at least going there and coming back won't be, because of the nearness of these prominent shopping destinations to Sobha Palladian.



Indira Nagar High Street

This is the place to go for the latest trends in fashion and the most exotic cuisines in some gourmet restaurants.

5.4 Km, 10 Min



Brigade Road

Probably Bangalore's busiest shopping street, this is also one of the oldest and most well-known destinations for food, fashion and everything in between.

7.8 Km, 15 Min



Phoenix Market City

It houses stores of almost all major retail brands and is spread over 11 acres with a special outdoor eating area and lots of open space.

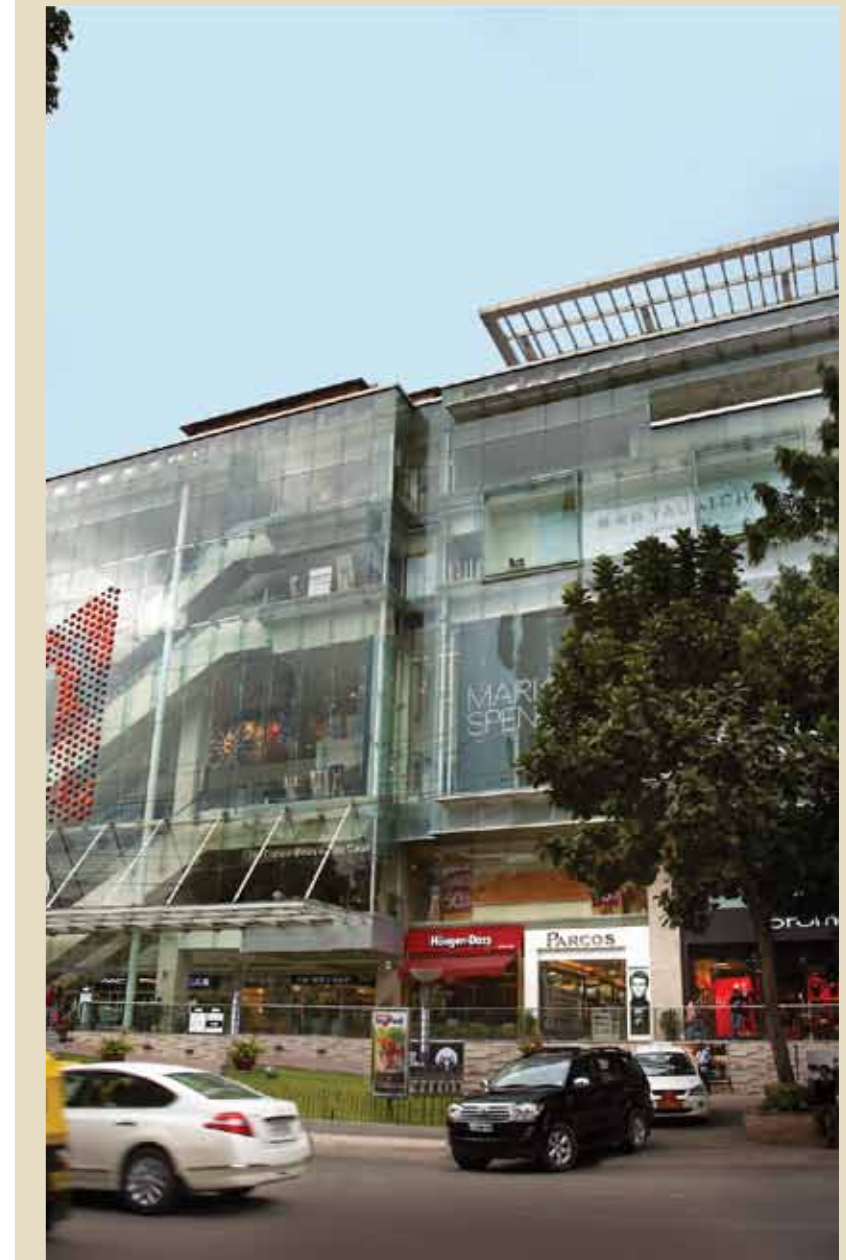
7.3 Km, 16 Min



1 MG Road

Named after its prestigious address on Bangalore's most famous street, this is a shopping mall that hosts the most prestigious international and national brands, and totally lives up to its illustrious name.

8.9 Km, 17 Min



Indulgences

Balnea is a Super Luxury Clubhouse built in the typical style of Palladian architecture. Its façade is intricately designed with a spacious portico lined with majestic pillars. The clubhouse has an area of 9500 sft and includes all modern amenities and luxuries that you'd want to indulge in.



Balnea





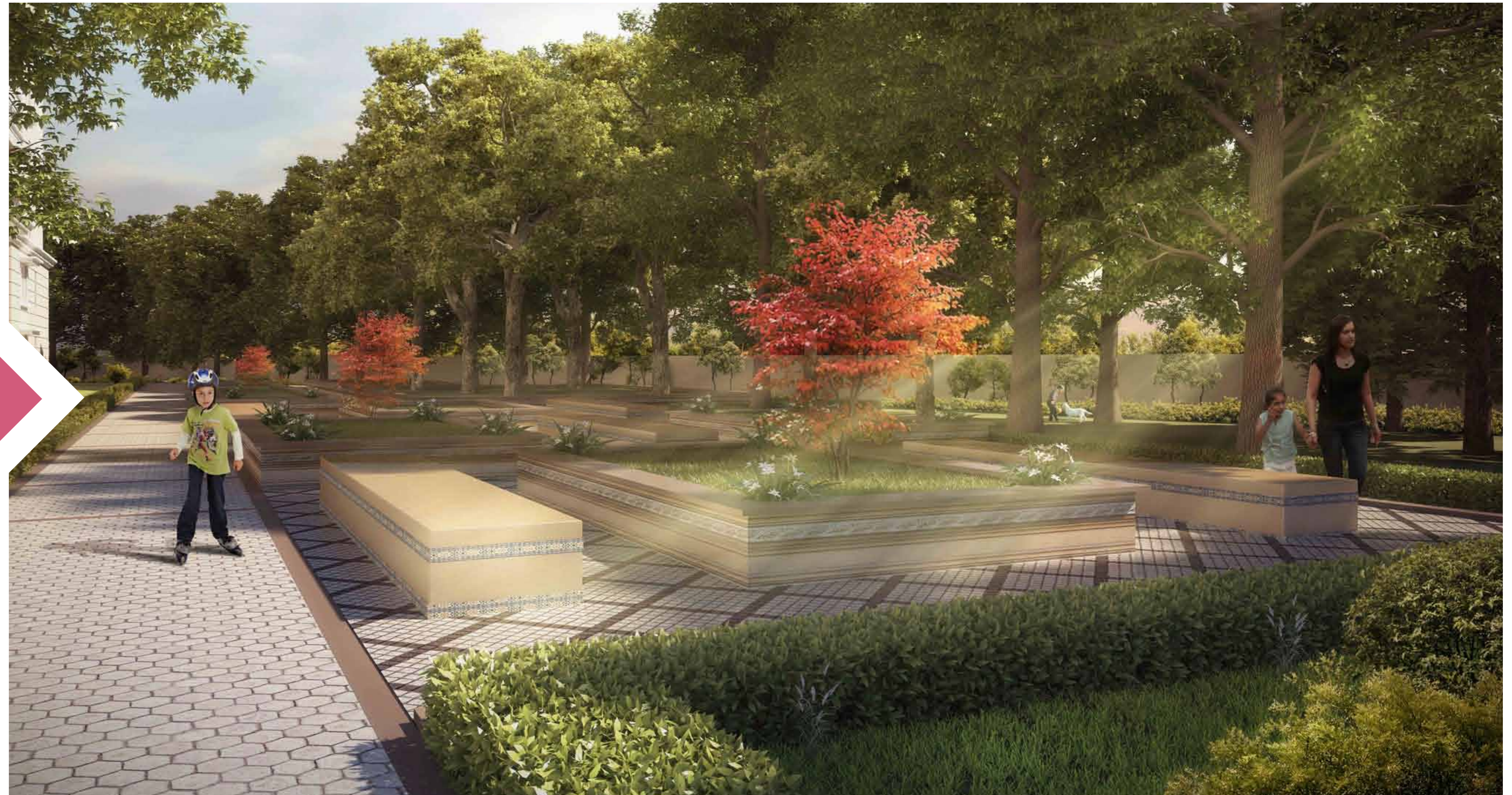
Rejuvenation

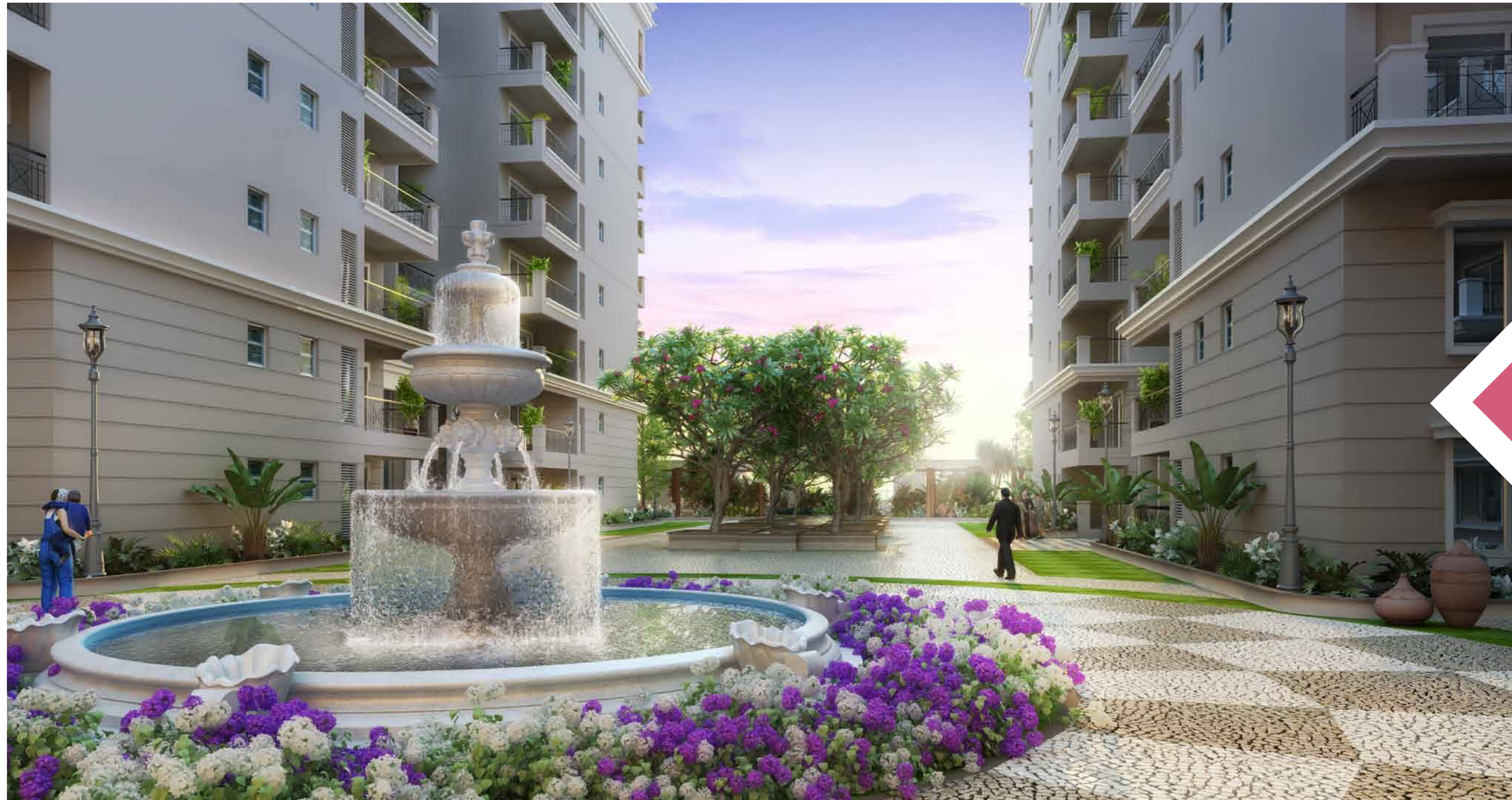


Workdays can get quite hectic at times and leave you feeling stressed out. Simply taking a dip in the large swimming pool at Sobha Palladian will revitalise you and free you from all the tensions of the day.

There's nothing like taking a walk among the trees as you breathe in the fresh, clean air in the large Tree Court at Sobha Palladian. You can stroll leisurely over here as you let your thoughts flow freely. This will help you clear your mind and be greatly beneficial for your mental and physical health. You can also take a seat here and enjoy the beautiful view, the pure air and the green surroundings.

Relaxation





Vitality

There are some walks that are relaxing and some that mean business. The Central Walkway is an apt place to discuss your thoughts with like-minded people who can value your ideas. Here you can share your elaborate plans and ideas with those who possess the power to bring them to fruition.





Tranquility

The sound of flowing water is enormously soothing, especially when you've had a long day at work. You can spend time in the evenings at the Fountain of Tranquility to relax yourself and clear your mind.





You can have a ball of a time playing a range of sports or simply take a break and unwind at one of these places.

Recreation

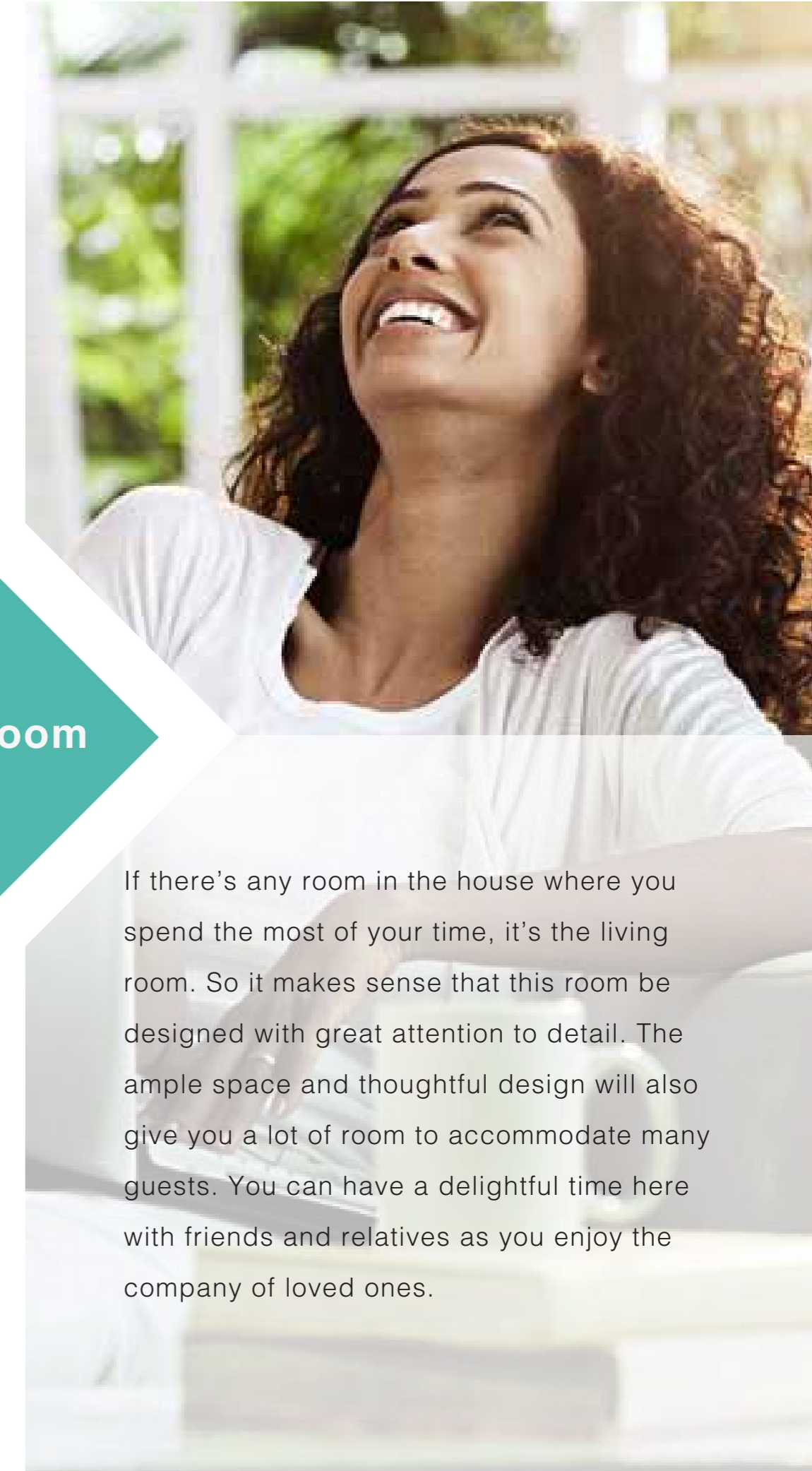


- Table Tennis
- Foosball
- Pool Table
- Squash Court
- Indoor Badminton
- Gymnasium
- Multipurpose Hall
- Reading Lounge
- Children's Play Area

The Residence



Living Room



If there's any room in the house where you spend the most of your time, it's the living room. So it makes sense that this room be designed with great attention to detail. The ample space and thoughtful design will also give you a lot of room to accommodate many guests. You can have a delightful time here with friends and relatives as you enjoy the company of loved ones.

Candle-light dinners, intimate conversations and intense discussions. Those few precious moments in the day when everyone in the family gets together on one table and exchanges thoughts and feelings. The Dining Area is the heart of the home and so has been designed in such a manner as to facilitate maximum space and room so that your family can always cherish the time they spend here.

Dining Area





Family Area



The spaciouly designed Family Area in Sobha Palladian is large enough for the entire family to settle in comfortably. You can spend quality time here with your spouse and kids, enjoying your leisure times together. The adjoining balcony is also a great place to relax with your family and enjoy the enthralling view of Sobha Palladian's architectural beauty.

At Sobha Palladian, we've ensured luxury in every corner of the house. The kitchen being one of the most important places had to be thoughtfully designed so as to give you lots of space to cook just the way you want or experiment with different styles of cuisine. With its spacious design and perfect finishing, cooking will definitely be a pleasurable experience.

Kitchen



Architectural Plans

Master Plan



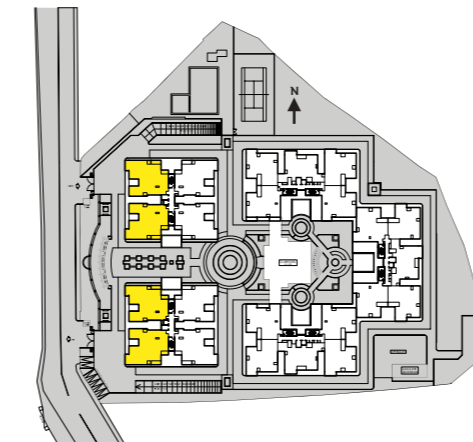
Land area : 5.25 acres
 Structure : B+G+8 Floors
 No. of Blocks : 5 Blocks
 Type of Units : 3&4 BHK
 SBA Range : 3 BHK 2268-2666 sft
 4 BHK 2689-3277 sft



- 1 Entrance Gateway
- 2 Entry to Basement
- 3 Swimming Pool & Changing Room
- 4 Transformer Yard
- 5 Tennis Court
- 6 Children's Play Area
- 7 Tree Gardens
- 8 D.G. Yard
- 9 STP & OWC
- 10 Lawn Area
- 11 Central Plaza
- 12 Clubhouse Entrance
- 13 Water Body with Tree Canopy
- 14 Central Walkway
- 15 Exit from Basement
- 16 Exit Gateway
- 17 Grand Entrance Architecture
- 18 Visitors' Car Park



Key Plan

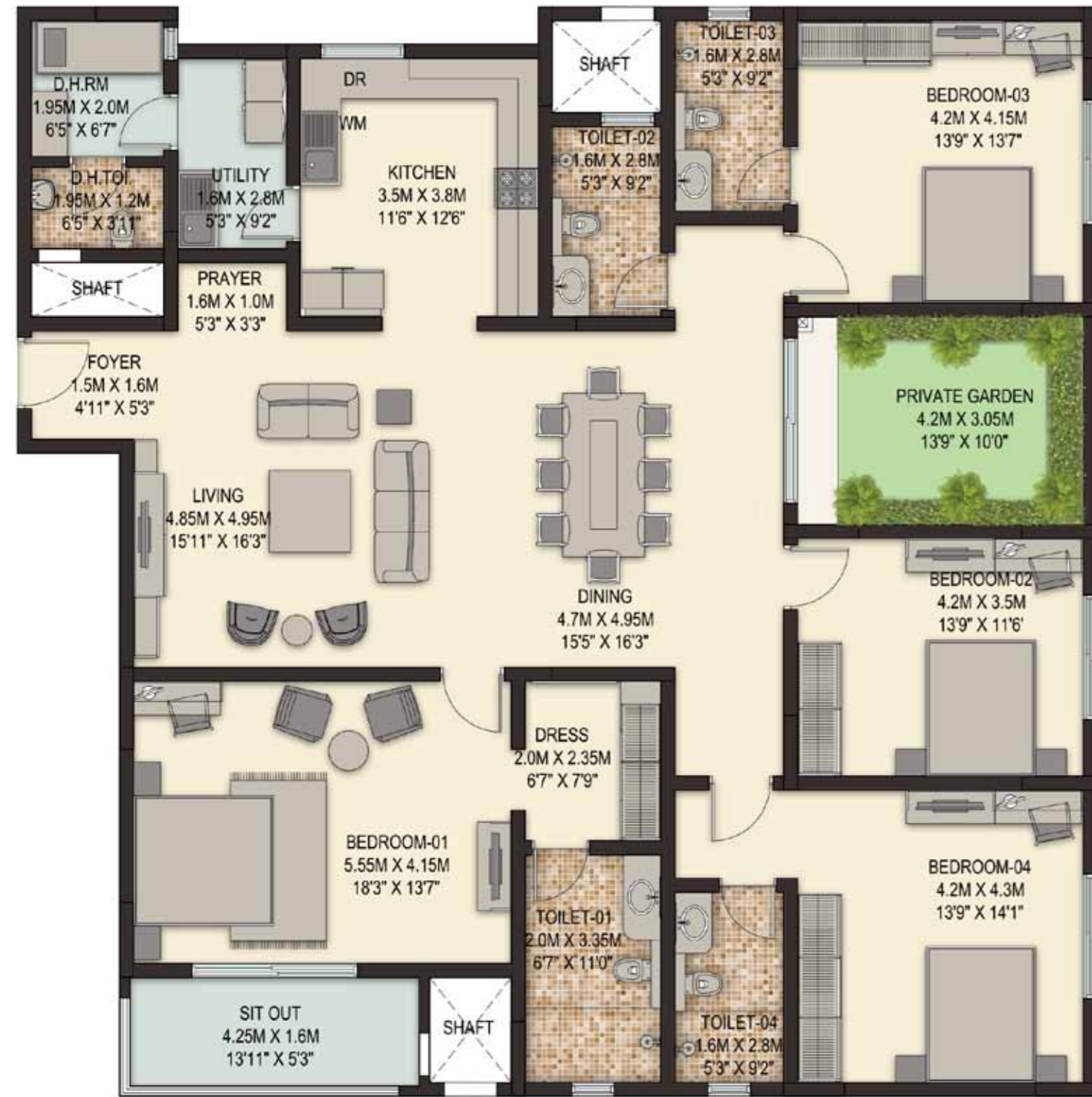


A2

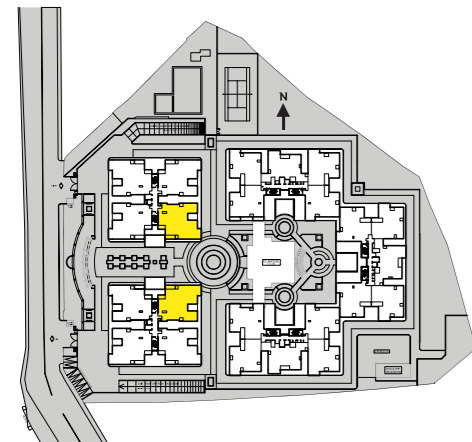
4 BHK
 SBA: 3252 sft

Features

- Master Bedroom with Dressing Area and a spacious Sit Out.
- Separate room for domestic help
- Kitchen and Utility Room
- 4 Luxurious Bedrooms
- Private Garden
- Prayer Room
- Living Room
- Family Room
- Dining Area
- Foyer



Key Plan

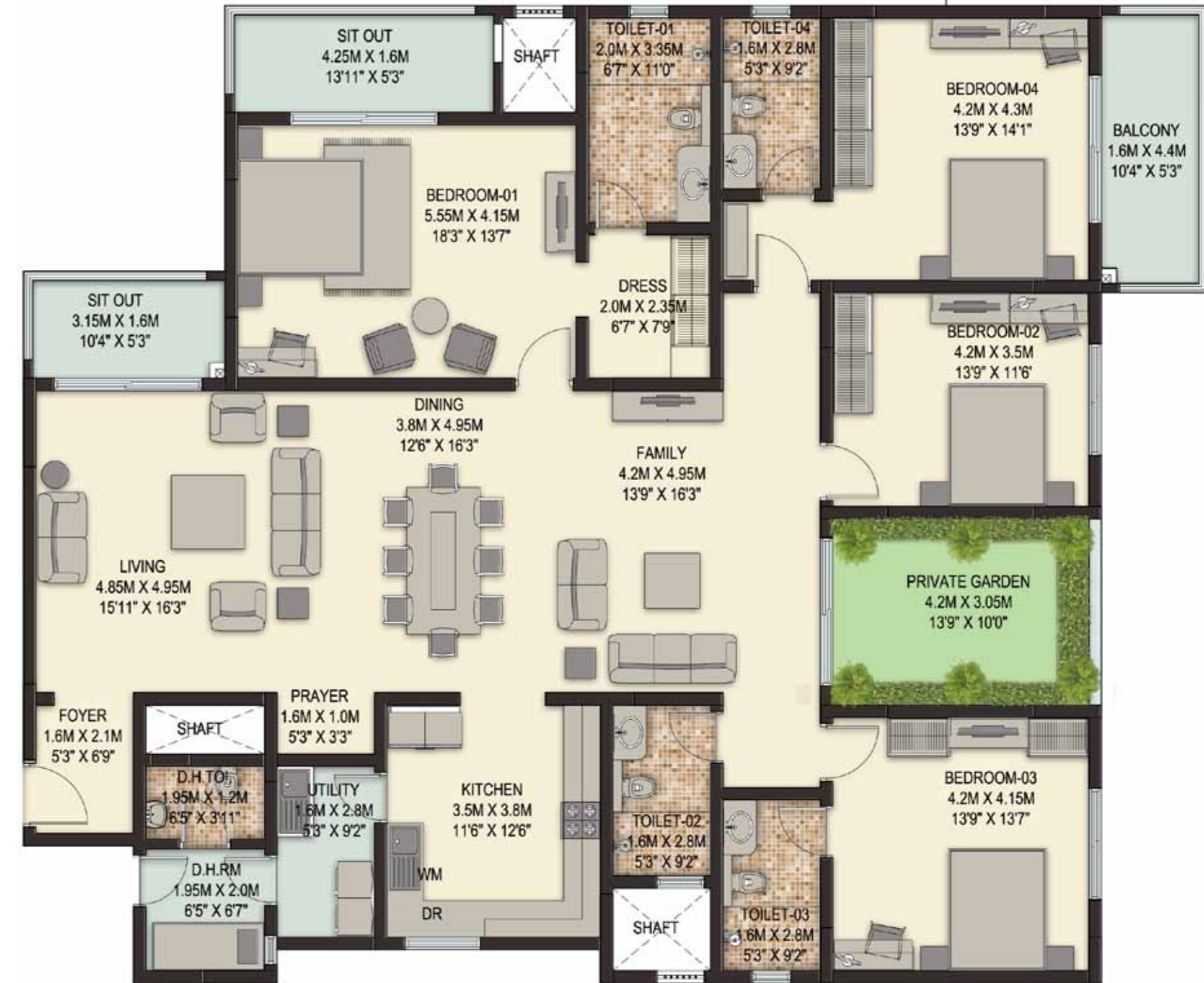


B

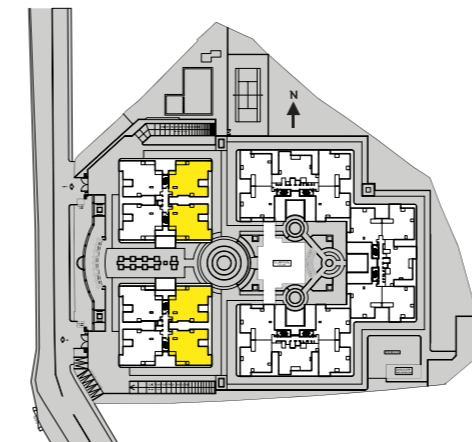
4 BHK
SBA: 2849 sft

Features

- Master Bedroom with Dressing Area and a spacious Sit Out
- Separate room for domestic help
- Kitchen and Utility Room
- 4 Luxurious Bedrooms
- Private Garden
- Prayer Room
- Living Room
- Dining Area
- Foyer



Key Plan

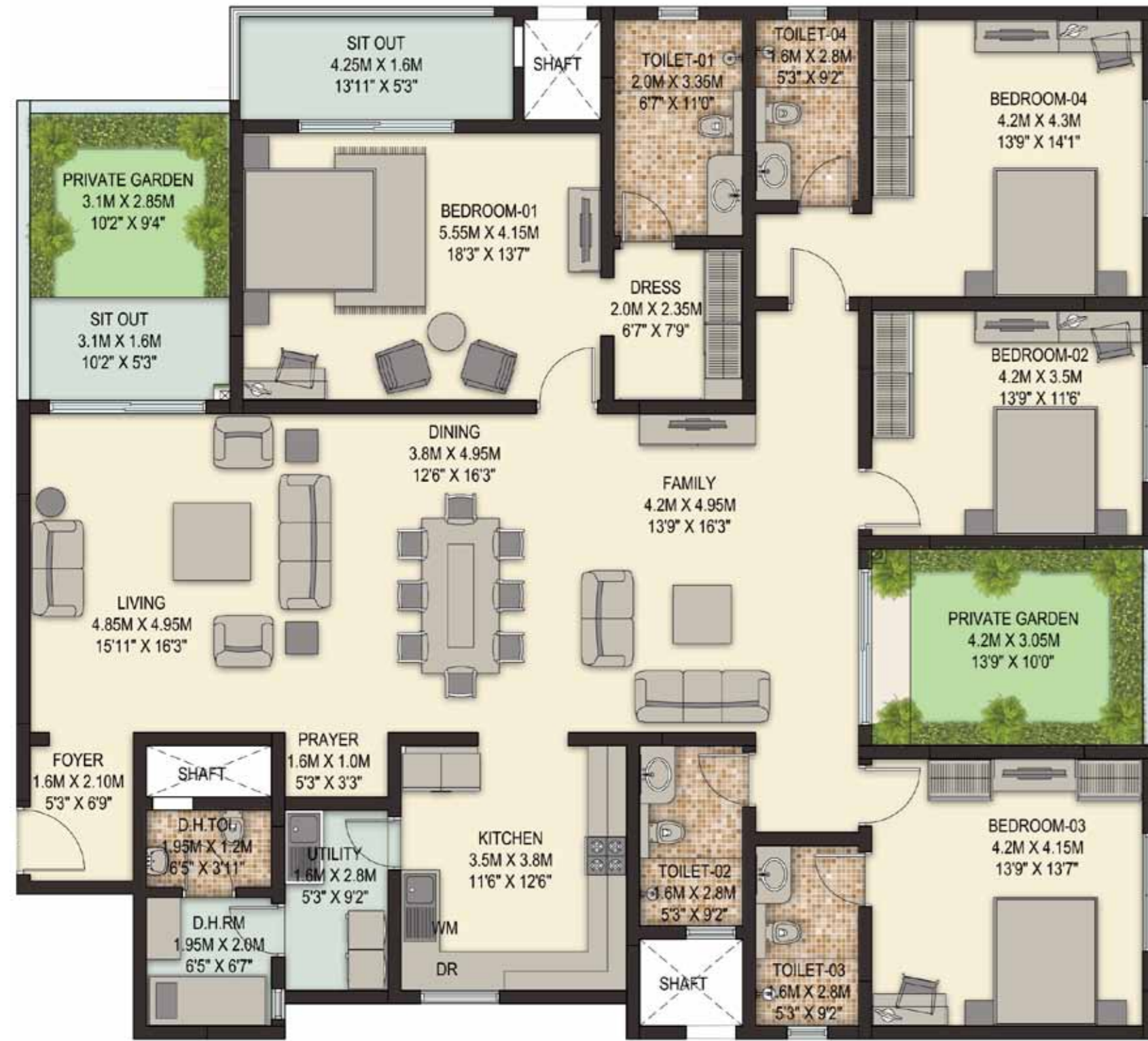


B2

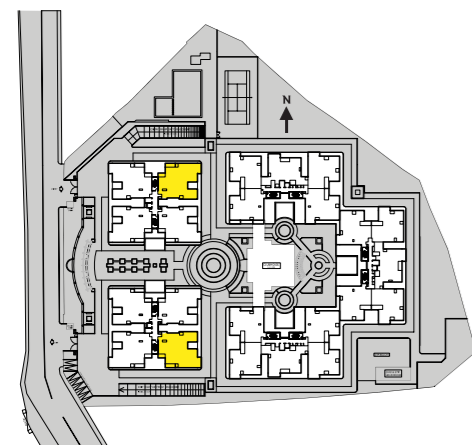
4 BHK
SBA: 3260 sft

Features

- Master Bedroom with Dressing Area and a spacious Sit Out
- Separate room for domestic help
- Kitchen and Utility Room
- 4 Luxurious Bedrooms
- Private Garden
- Prayer Room
- Family Room
- Living Room
- Dining Area



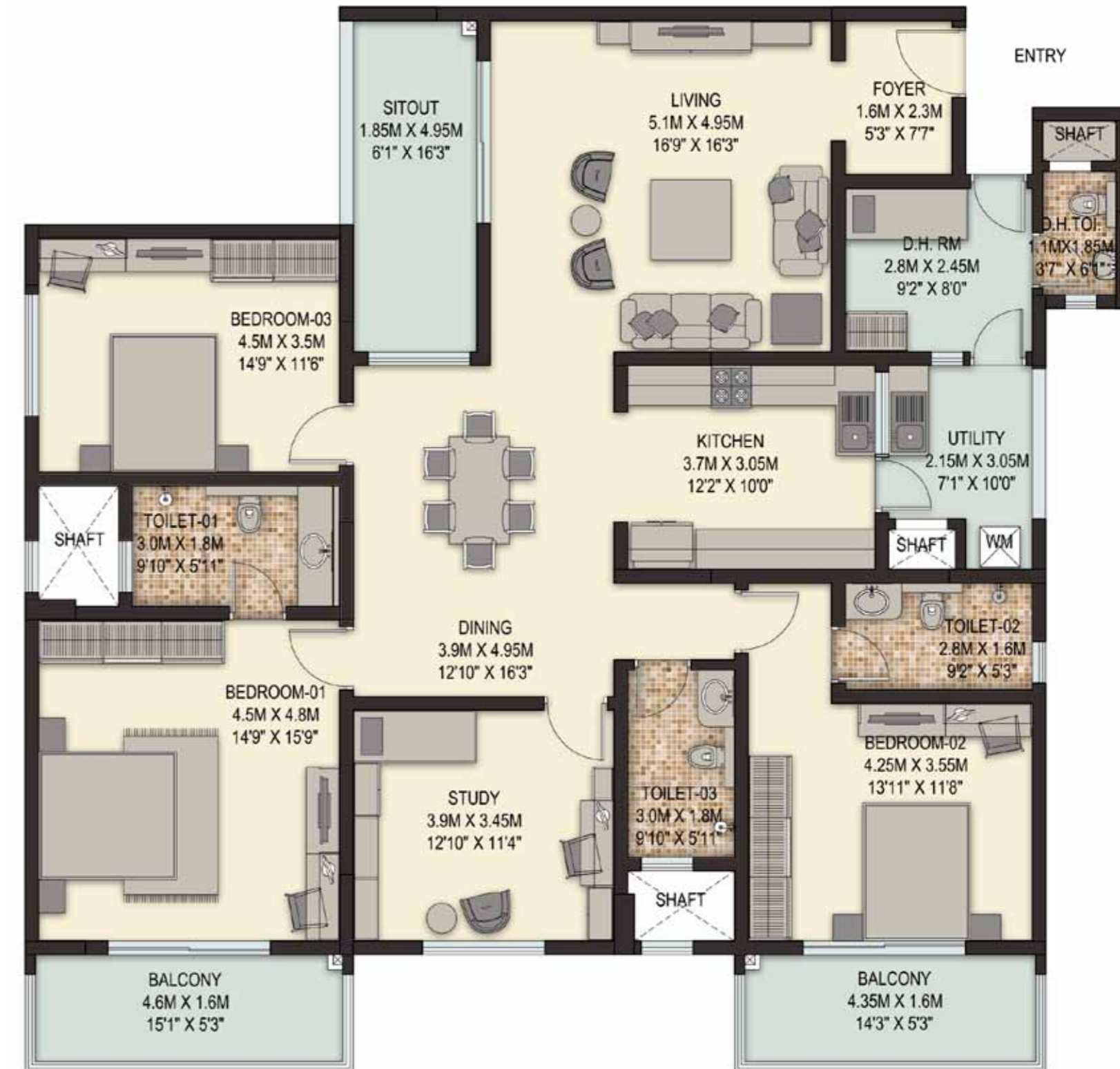
Key Plan



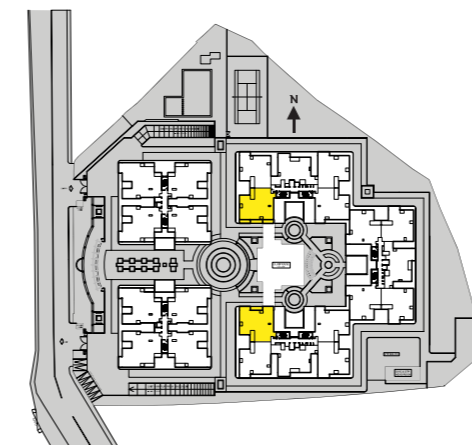
4 BHK
SBA: 3197 sft

Features

- Master Bedroom with Dressing Area and a spacious Sit Out
- Family Room with a huge Private Terrace
- Sit Out with a large Private Garden
- Separate room for domestic help
- Kitchen and Utility Room
- 4 Luxurious Bedrooms
- Prayer Room
- Living Room
- Dining Area
- Foyer



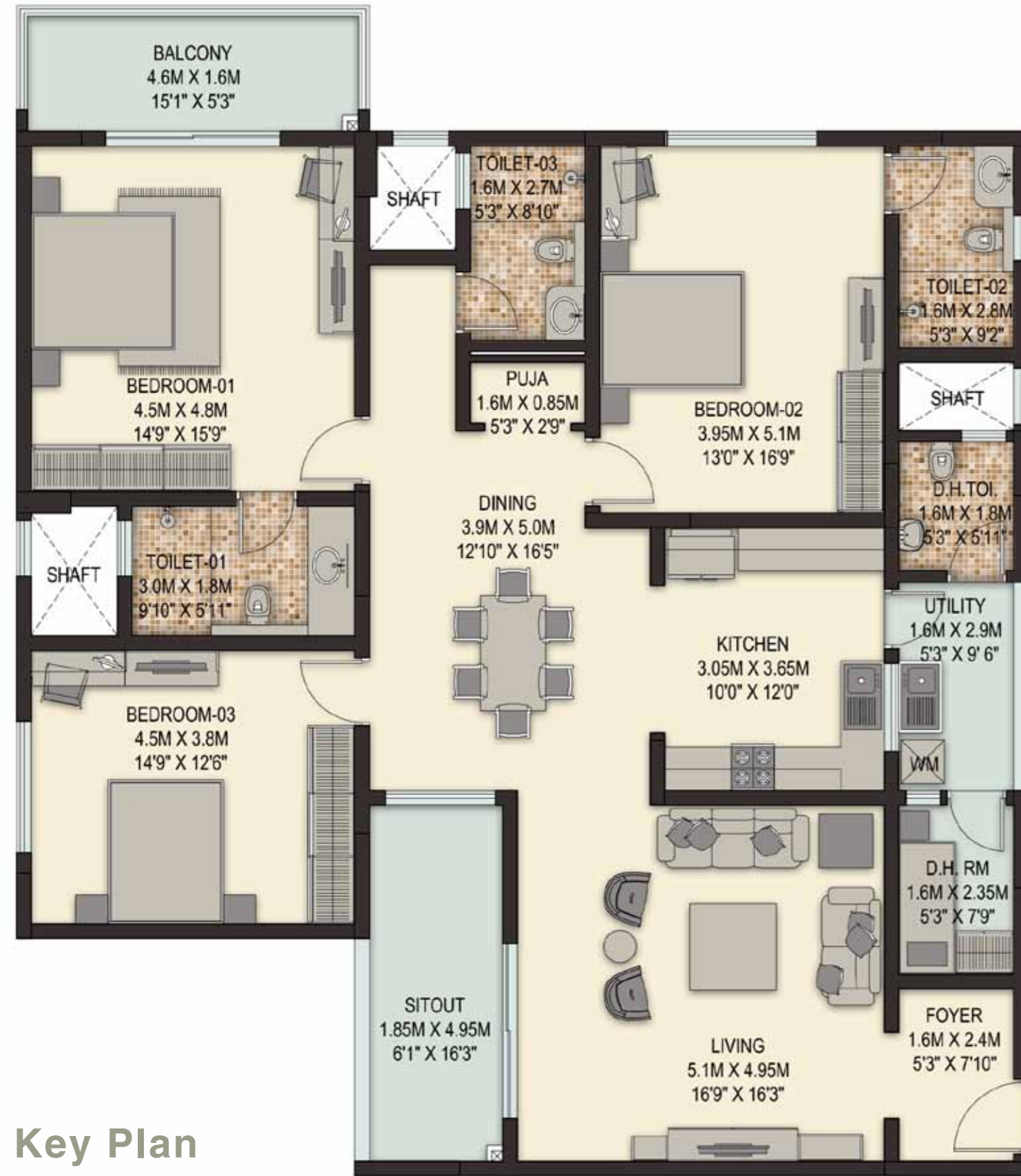
Key Plan



3 BHK
SBA: 2666 sft

Features

- Living Room with a spacious Sit Out
- Separate room for domestic help
- Kitchen and Utility Room
- 3 Luxurious Bedrooms
- Study Room
- Dining Area
- Foyer



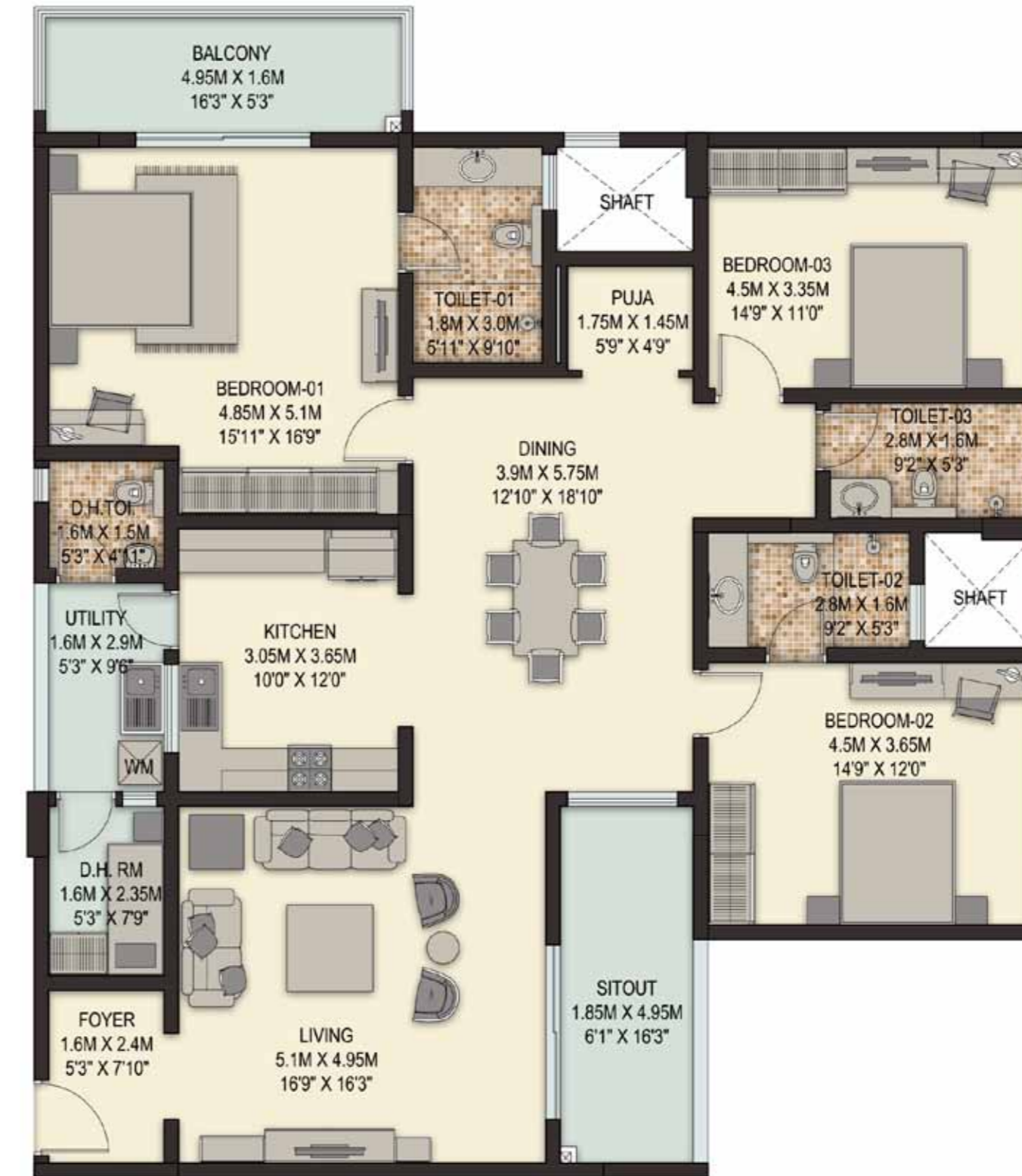
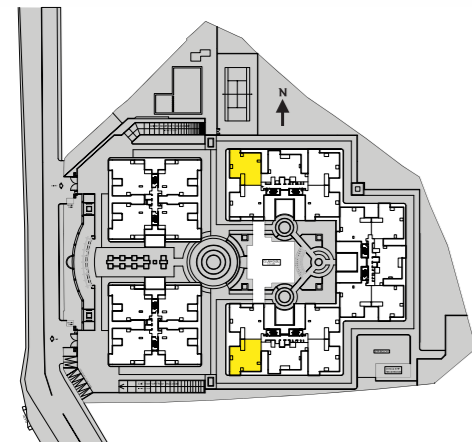
F2

3 BHK
SBA: 2392 sft

Features

- Living Room with a spacious Sit Out
- Separate room for domestic help
- Kitchen and Utility Room
- 3 Luxurious Bedrooms
- Prayer Room
- Dining Area
- Foyer

Key Plan



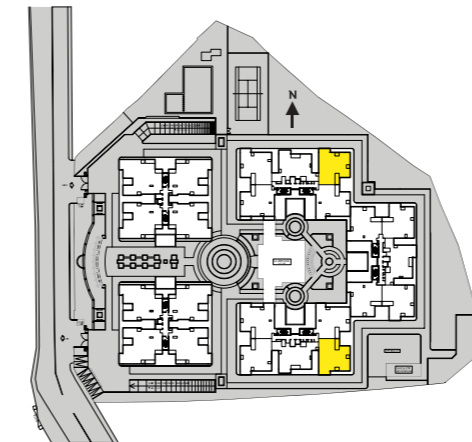
H2

3 BHK
SBA: 2408 sft

Features

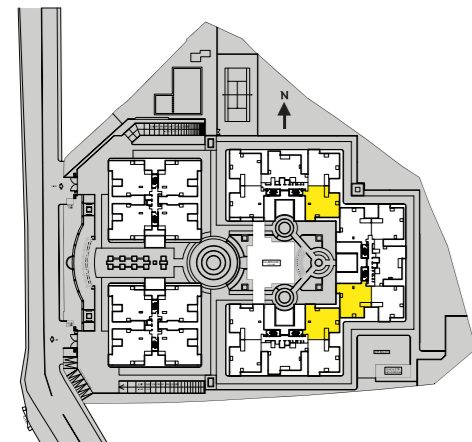
- Living Room with a spacious Sit Out
- Separate room for domestic help
- Kitchen and Utility Room
- 3 Luxurious Bedrooms
- Prayer Room
- Dining Area
- Foyer

Key Plan





Key Plan

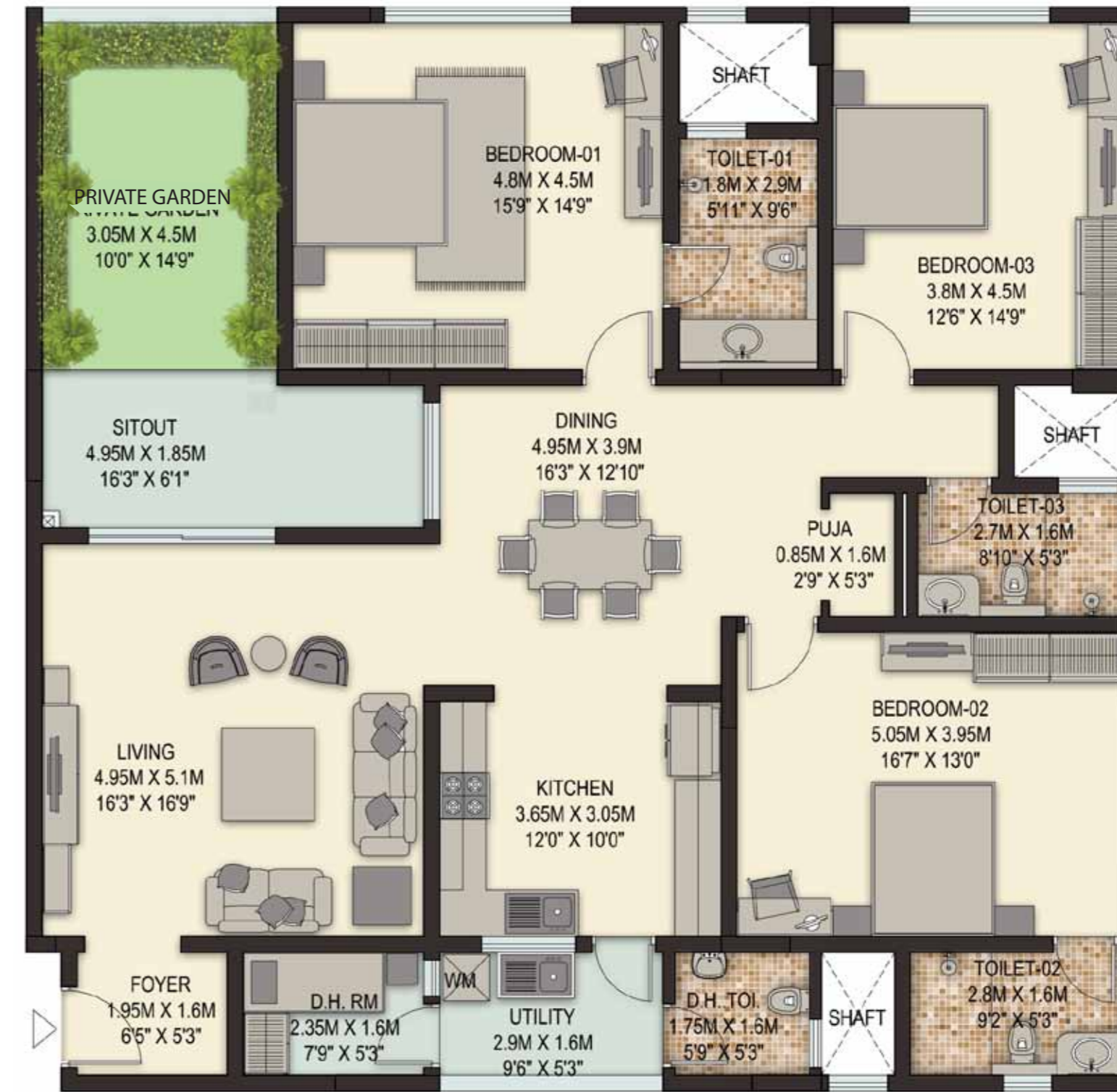


J2

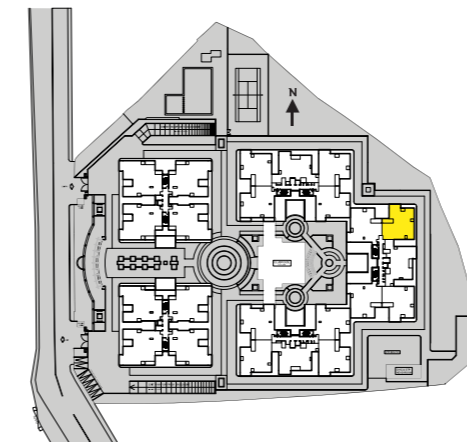
3 BHK
SBA: 2547 sft

Features

- Living Room with a spacious Sit Out
- Separate room for domestic help
- Kitchen and Utility Room
- 3 Luxurious Bedrooms
- Prayer Room
- Dining Area
- Foyer



Key Plan



3 BHK
SBA: 2321 sft

Features

- Spacious Sit Out with a large Private Garden
- Separate room for domestic help
- Kitchen and Utility Room
- 3 Luxurious Bedrooms
- Prayer Room
- Living Room
- Dining Area
- Foyer

Specifications

205 EXCLUSIVELY DESIGNED 3&4 BEDROOM CONDOMINIUMS.

STRUCTURE

- Basement + Ground + 8 storied RCC structure.

CAR PARKING

- Covered car parks in basement level.

FOYER/LIVING/DINING

- Superior quality natural / engineered stone slab / vitrified tile flooring and skirting.
- Plastic emulsion paint for walls and ceiling.

BEDROOMS

- Superior quality laminated flooring and skirting / equivalent flooring for master bedroom.
- Superior quality vitrified tile flooring and skirting in other bedrooms.
- Plastic emulsion paint for walls and ceiling.

TOILETS

- Superior quality anti-skid ceramic tile flooring.
- Superior quality ceramic wall tiling up to false ceiling.
- False ceiling with grid panel.
- Granite vanity counters in all toilets

- except domestic help's toilet.
- Shower partition in master toilet.

KITCHEN

- Natural / engineered stone slab / vitrified tile / ceramic tile flooring.
- Superior quality ceramic wall tiling from floor to ceiling soffit.
- Plastic emulsion paint for ceiling.

BALCONIES/UTILITIES

- Superior quality anti-skid ceramic tile flooring and skirting.
- Granite coping for parapet / mild steel handrail.
- Plastic emulsion paint for ceiling.
- All walls external grade textured paint.

DOMESTIC HELP ROOM

- Superior quality ceramic tile flooring.
- Plastic emulsion paint for walls & ceiling.

STAIRCASE

FIRE EXIT STAIRCASE

- Concrete treads & risers.
- Textured paint for walls.
- Plastic emulsion paint for ceiling.
- MS handrail.

COMMON AREAS

- Vitrified tile / granite flooring.

- Superior quality ceramic wall tiling up to ceiling.
- Plastic emulsion for ceiling.
- Granite coping for parapet/MS handrail.

JOINERY

MAIN DOOR / BEDROOM DOORS

- Frame – timber.
- Architrave – timber.
- Shutters – with both side masonite skin.

TOILET DOORS

- Frame – timber.
- Architrave – timber.
- Shutters –with outside masonite and inside laminate.

OTHER DOORS / WINDOWS

- All other external doors to be manufactured in specially designed aluminium extruded frames and shutters with panels.
- Heavy-duty aluminium glazed sliding windows and french windows made from specially designed and manufactured sections.

LIFTS

- Total of 10 elevators of reputed make (2 per block)

ELECTRICAL WORKS

- Split A/C provision in living room and all bedrooms.
- BESCOM power supply: 10 kw 3 phase supply for 3 bedroom unit, 12 kw 3 phase supply for 4 bedroom unit.
- Standby power of 3 kw for apartments and 100% power backup for common area facilities.
- Exhaust fans in kitchen and toilets.
- Television points in living, family, all bedrooms and domestic help room.
- Telephone points in all bedrooms, living and family room.
- Intercom facility from security cabin to each apartment.

PLUMBING & SANITARY

- Sanitary fixtures of reputed make in all toilets.
- Chromium plated fittings of reputed make in all toilets.
- 25 litre capacity geysers in all toilets.
- 15 litre capacity geyser in domestic toilet.
- Stainless steel single bowl sink with drain board in utility.

Specifications



The Sobha Story

SOBHA DEVELOPERS. PASSION AT WORK.

With three decades of experience in creating resplendent interiors of palaces and masterpieces in the Middle-East, Mr. P.N.C. Menon founded Sobha Developers in 1995 with a clear vision to transform the way people perceive quality. Today, Sobha, a ₹20 billion Company, is one of the largest and only backward integrated real estate players in the country.

Since inception, the company has always strived for benchmark quality, customer centric approach, robust engineering, in-house research, uncompromising business ethics, timeless values and transparency in all spheres of business conduct, which have contributed in making it a preferred real estate brand in India. In 2006, Sobha went public through its initial public offering, an event that created history when the issue got oversubscribed a record 126 times.

Headquartered in Bangalore, Sobha is primarily focused on residential and contractual projects. The company's residential projects include presidential apartments, villas, row houses, luxury and super luxury apartments and plotted developments along with amenities such as clubhouses, swimming pools and shopping complexes. In all its residential projects, the company lays a strong emphasis on environmental management, water harvesting and high safety standards. As for contractual projects, the company has constructed a wide variety of structures for corporates including corporate offices, convention centres, software development blocks, multiplex theatres, hostel facilities, guest houses, food courts, restaurants, research centres and clubhouses. Some of Sobha's prestigious corporate clients include Infosys, Taj Group, Dell, HP, Timken, Biocon, Institute of Public Enterprises (IPE), Bosch, Hotel Leela Ventures and others.

Sobha's superior execution ability is one of its core strengths. As of 30th June 2013, Sobha has completed 85 real estate projects and 230 contractual projects covering about 56.38 million square feet of area. The company currently has 45 ongoing residential projects aggregating to 26.79 million square feet of developable area and 18.90 million square feet of saleable area, and 40 ongoing contractual projects aggregating to 11.41 million square feet of area. Sobha has made a footprint in 23 cities and 13 states across India.

The backward integration model is one of the key competitive strengths of Sobha. This literally means that the company has all the competencies and in-house resources to deliver a project from conceptualisation to completion. Backward integration includes an interiors division, a metal works and glazing factory, and a concrete products factory. Sobha has also diversified into retail business with spring mattresses under the brand name 'Sobha Restoplus'. More than 27 variants of mattresses are produced by the mattress division on state-of-the-art machinery of American and European pedigree.

The company has also set up Sobha Academy, a training centre that offers world-class training in building construction with state-of-the-art facilities.

Sobha is a process driven organisation and is amongst the first companies in the industry to obtain the ISO 9001 certification. The company has also received the OHSAS 18001:2007 and ISO 14001:2004 certifications for Environmental, Health and Safety Management Systems.

The company believes that for the overall well-being of the society, a comprehensive and sustainable development of rural India is a must. It is in this context that Graamasobha, a unique social developmental programme was initiated by the company in 2006 in two grama panchayaths in Palakkad district of Kerala. The programme covers verticals like education, health, employment, water, sanitation and housing besides various social empowerment measures.

Sobha has been honoured with over 100 prestigious awards by various institutions of repute. These include 'Most Reliable Builder Award' by CNBC, 'Top Indian Real Estate Company' by Dun & Bradstreet, 'India's Top 10 Builders Award' by Construction World, 'Best Building Award' by CIDC, 'Best Office Space Design' by GIREM, 'Best Annual Report in Real Estate Worldwide' by LACP, 'Muthiah Kasi Award for Value Engineering' by INVEST and 'Employer of the Year Award' by Realty Plus, amongst many others.

Multiple laurels have also been showered on the founder and Chairman Emeritus, Mr. P.N.C. Menon, which include 'Pravasi Bharatiya Samman Puraskar' conferred by the Government of India and 'Lifetime Achievement Award for Real Estate' by NDTV. Mr. Ravi Menon, Chairman, has been honoured with the 'Pathfinders Award for Most Enterprising CXO' by Realty Plus. The Vice Chairman & Managing Director, Mr. J.C. Sharma, has been voted 'Asia's Best Property CEO' by Institutional Investor Magazine.

Sobha is an organisation where quality meets excellence, technology meets aesthetics and passion meets perfection.

BEST INDIAN COMPANY IN REAL ESTATE

Dun&Bradstreet
(D&B) Corporate Awards



THE MOST RELIABLE BUILDER

CNBC Awaaz Real Estate
Awards 2012 (voted by consumers)



Sobha Elite awarded Best Residential Project in the Mid Segment (₹35 lac-₹1 crore) with 70% or more completion at the city level
By CNBC Awaaz Real Estate Awards 2012

Muthiah Kasi Award 2012 for the best Value Engineering Organisation in construction and infrastructure segment in India
By INVEST

Vice Chairman and Managing Director, Mr. JC Sharma voted as the "Top CEO" in the Property category in the Asia ranking
By Institutional Investor magazine

Sobha Developers Ltd. ranked as the top company in "Asia's Best Investor Relations (2012) Survey" in the Property category
By Institutional Investor magazine

Cherian Palathra Award 2012 to Mr. PNC Menon, Chairman, Sobha Developers for outstanding contribution and exemplary service to the society
By Mr. Cherian Palathra, President of All Kerala Gold and Silver Merchants Association (AKGSMA)

Employer of the Year Award in Real Estate Category
By Realty Plus

Star Realty Lords of the Land-Realty Mogul
By Planman Media

Mother Teresa Special Award for Corporate Citizen-2011
By Loyola Institute of Business Administration (LIBA)

Young Achievers Award to Mr. Ravi Menon, Vice Chairman, Sobha Developers
By Real Estate Awards

Special Recognition to Mr. PNC Menon for "Dedicated Service to Civil Engineering and the Construction Industry"
By Civil-Aid Techno Clinic Pvt. Ltd.

Accolades

A Sobha home has to go through 1662 Quality Checks. Maintaining such a high quality of construction has earned us many accolades over the years. The past year was especially delightful for us, as we received a number of awards from media houses as well as other institutions. Some of these awards were also decided by public voting, which only proves our customers' belief in us as a quality builder of great reputation.



Media Coverage

The media has actively tracked our illustrious growth over the years. From landmark projects to corporate achievements, journalists and reporters have enthusiastically covered our story of architectural glory, quality construction and passion for detail.

Sobha Developers Net Rises 11% to ₹50 crore

MUMBAI Bangalore-based Sobha Developers on Thursday reported 11% rise in consolidated net profit at ₹50 crore for the quarter ended June. Consolidated net sales for the quarter rose 7% to ₹461 crore, the company said. Net profit for the quarter rose 46%, excluding profit on account of land monetisation in the previous year. During the quarter, the company sold 0.92 m sq ft of new space against 0.84 m sq ft a year ago. Average sales realisation rose to ₹6,548 per sq ft against ₹5,737 a year ago. "The unbilled revenue as of June 30, 2013, is ₹19.70 billion (₹1,970 crore), out of which we expect a minimum of ₹5.11 billion (₹511 crore) to be recognised during the next three quarters," said Sobha Developers MD JC Sharma.

'Taking all stakeholders into confidence will go a long way'

The real estate sector has been a hot topic in the news lately. The government has been taking various steps to regulate the sector and ensure transparency. The industry has been reacting to these changes and trying to adapt to the new environment. It is important for all stakeholders to work together to ensure a healthy and sustainable growth for the sector.

Sobha wins ₹168-crore deals from Dell, Bosch

Bangalore Sobha Developers has bagged Rs 168 crore worth of contractual development work for office spaces in Bangalore, from PC manufacturer Dell and European automotive major Bosch. While Dell's new office space is coming up in the city's IT hub of Whitefield, Bosch is developing new office spaces in Adugodi. "Both projects on which work has already begun, will be completed next year," said J.C. Sharma, MD, Sobha Developers. At the end of the just concluded April to June first quarter, the developer had 40 ongoing contractual projects aggregating to 11.41 million sq ft of space valued at Rs 720 crore. "About 65% of this contractual business is dedicated to contractual work for Infosys," said Sharma. At the end of the quarter, the company sold 0.92 million sq ft of new space compared to 0.84 million sq ft in the corresponding period last year.

Sobha founder Menon commits half his \$600m wealth to charity

BANGALORE: The founder of Bangalore-based real estate major Sobha Developers, P.N. Menon, has pledged half his personal wealth to charity. Menon is estimated to have a net worth of over \$600 million. Just last month, Wipro chairman Azim Premji transferred Rs 12,500 crore worth of personal shares to his not-for-profit trust Azim Premji Foundation. Taking the trust's shareholding in Wipro to 18.5%, the Warren Buffett Bill Gates initiative, 'Giving Pledge', places Premji among those around the world who have committed half their wealth to philanthropy through Premji's spokesperson. Menon has committed that much. Menon spends most of his time in Dubai where he has business interests. Menon told local weekly Arabian Business that he has plans to open educational institutions in India and Oman. "Once you make all of the money, I don't think you should keep all of it for your family. A large portion of it should go to society. I have decided that 50% of mine should go to society," he was quoted as saying. Menon told Arabian Business: "I'm lucky to have made my money. After a certain point in time, money cannot make a difference in your life. I feel that it's not even called charity, it's about accountability and the responsibility to society." P.N. Menon is a philanthropist and a social worker. He has been involved in various social welfare activities. He has also been a member of the National Council of Educational Research and Training (NCERT). He has also been a member of the National Commission for Women (NCW). He has also been a member of the National Commission for the Backward Classes (NCBC). He has also been a member of the National Commission for the Scheduled Castes (NCSC). He has also been a member of the National Commission for the Scheduled Tribes (NCST). He has also been a member of the National Commission for the Minorities (NCM). He has also been a member of the National Commission for the Disabled (NCD). He has also been a member of the National Commission for the Elderly (NCE). He has also been a member of the National Commission for the Women (NCW). He has also been a member of the National Commission for the Backward Classes (NCBC). He has also been a member of the National Commission for the Scheduled Castes (NCSC). He has also been a member of the National Commission for the Scheduled Tribes (NCST). He has also been a member of the National Commission for the Minorities (NCM). He has also been a member of the National Commission for the Disabled (NCD). He has also been a member of the National Commission for the Elderly (NCE).

Sobha Developers net profit up 11.3%

Mumbai: Bangalore-based Sobha Developers Ltd on Thursday said net profit for the June quarter rose 11.3% to ₹50.1 crore from the year-ago period. Revenue increased 6.78% to ₹463 crore. "The company performed credibly well during the first quarter, especially in Bangalore, Chennai and Thrissur. Notwithstanding a slowing economy and sliding rupee, there was a sustained momentum," said J.C. Sharma, vice-chairman and managing director. The company launched two new projects in Bangalore in the June quarter. In the September quarter the company is planning to launch three new residential projects in Bangalore, Kozhikode and Mysore. Shares of Sobha Developers Ltd fell 0.35% to 281.65 on BSE, while the benchmark Sensex closed up 0.7% at 18,789.34. UNNIKRISHNAN S.

If you are in real estate, you need to be a national developer

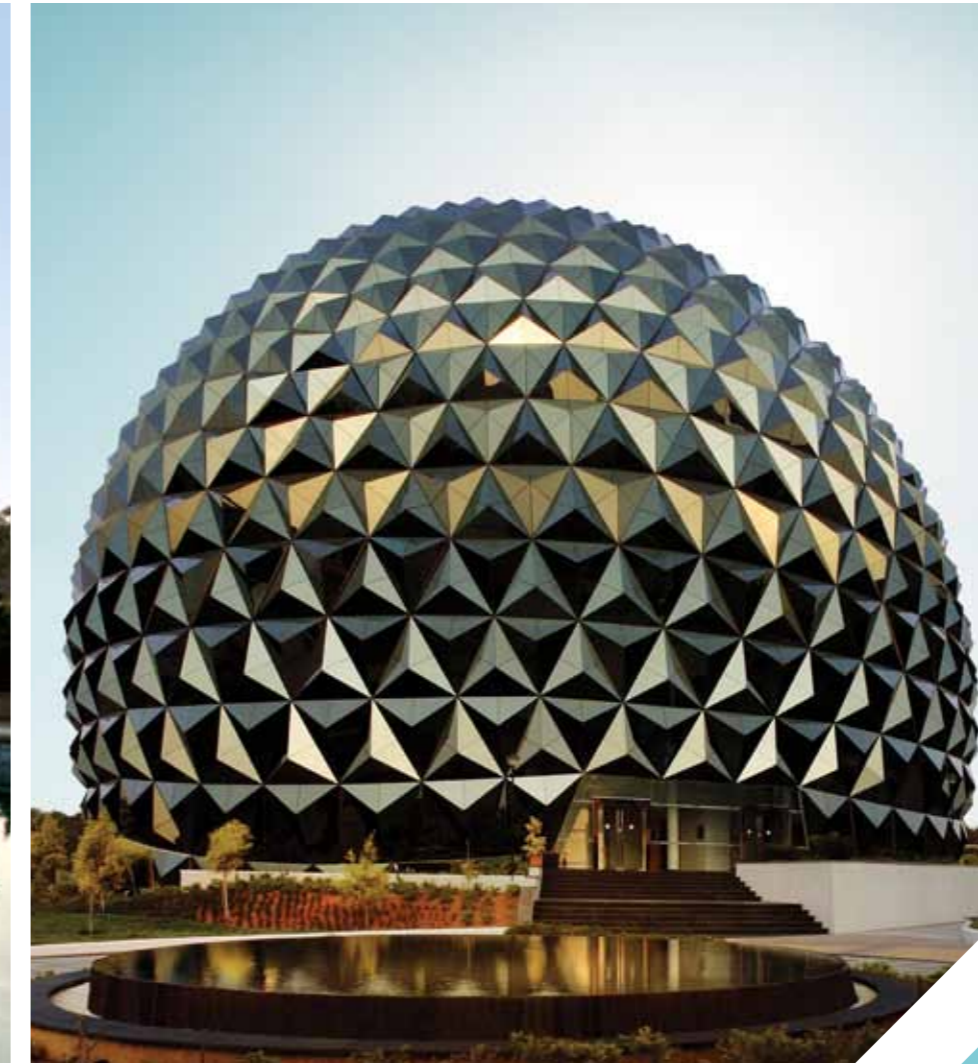
PHC MENON/SOBHA GROUP
By MADHURIMA NANDY
The real estate industry is witnessing a paradigm shift. National developers are emerging as the dominant force in the market. This is due to various reasons, including the need for large-scale infrastructure, the growing demand for quality housing, and the increasing competition from international players. National developers have the resources and expertise to undertake large-scale projects and provide high-quality services to their customers. They also have the ability to leverage their brand and reputation to attract investors and customers. This is why, if you are in real estate, you need to be a national developer.



Infosys SDB 4, Mysore



ADAMUS, Bangalore



Infosys Multiplex, Mysore

Sobha has built many great buildings over the years, which include corporate offices as well as residential projects. Our customers have always been greatly pleased with our work and especially impressed by our quality of construction.

Construction Marvels



Sobha Lakeview Clubhouse, Bangalore



Sobha City, Thrissur, Kerala



Infosys Office, Bangalore

“Sobha Developers have built exceptionally high quality campuses for us and always delivered within agreed schedules. They have built more than 14 million sft of space for us since 1999 and we are deeply satisfied with their services.”

Narayana Murthy

Chairman & Chief Mentor
Infosys Technologies Limited