

Builders & Developers:



SAI MYTHRI
DEVELOPERS

Site Address: Sy. No. 21/1
Nyanappanahalli Village, BTM 4th Stage
Near Saibaba Temple, Bangalore 560 076

Sole Marketing Agency:



#99, 2nd Main, MICO Colony
BTM 2nd Stage, Bangalore 560 076
Phone: +91 80 4120 0111/222
E-mail: sales@saiproperties.com

Chandru: 99004 14414
Murthy : 99002 32425
Babu : 98450 77533

Visit us at: www.saiproperties.com

THIS COMMUNICATION IS CONCEPTUAL IN NATURE AND NOT BY ANY MEANS A LEGAL OFFERING. THE DEVELOPERS-PROMOTERS RESERVE THE RIGHT TO CHANGE, DELETE OR ADD ANY SPECIFICATION, PLANS, IMAGES MENTIONED HEREIN. THESE IMAGES ARE INDICATIVE IN NATURE

concept, design & execution by: ragdes - 98450 74047



Every morning heralds a day of hopes





Spread the
happiness,
all day



Sprinkle your
day with
rays of hope

The sustainer of all life on earth, source of motivation to poets, deified character of importance in mythologies, the star with an unlimited supply of energy, how lucky we can be to be on this planet. Drawing inspiration from this phenomenon, we have aptly christened our project as SUNSHINE.

With the first ray of the sun, begin your day full of hopes and aspirations. Compliment your thoughts and motivate your actions in the environment that you live in. List out your ideas of what a home should be. Compare it with our list of offerings. We wouldn't be surprised if you are surprised.

Feature for feature, matching your needs with our offerings, SUNSHINE, located at Nyanappanahalli village, Arekere, off Bannerghatta Road, is the toast of every connoisseur of good living.



Sai
Sunshine



Colour your cozy lifestyle in sunshine

Bannerghatta Road is one stretch that is dotted with corporates (including the IT industry), ultra-modern hospitals, international schools, star hotels, and heritage spots like the Meenakshi Temple.

This road is one of the very important arterial of Bangalore, IT capital of the country. While the road itself is commercially active, the project, 1.5 km in the interiors, offers much sought-after peace and tranquility.

PROXIMITY

3 Km. from J.P. Nagar Junction, 8 Km from Jayanagar 4th Block, 2 Km from IIM, Bangalore and Meenakshi Temple, 10 Km from Electronic City, Located in the AREKERE, BTM 4th Stage BDA Layout.

NEAR BY EDUCATIONAL FACILITIES

Sree Chaitanya School, Sherwood High, Ryan International School, PSBB, BGS National Public School, Brigade School and Delhi Public School.

NEAR BY HOSPITALS

Apollo, Fortis, Jayadeva and Sagar Hospital

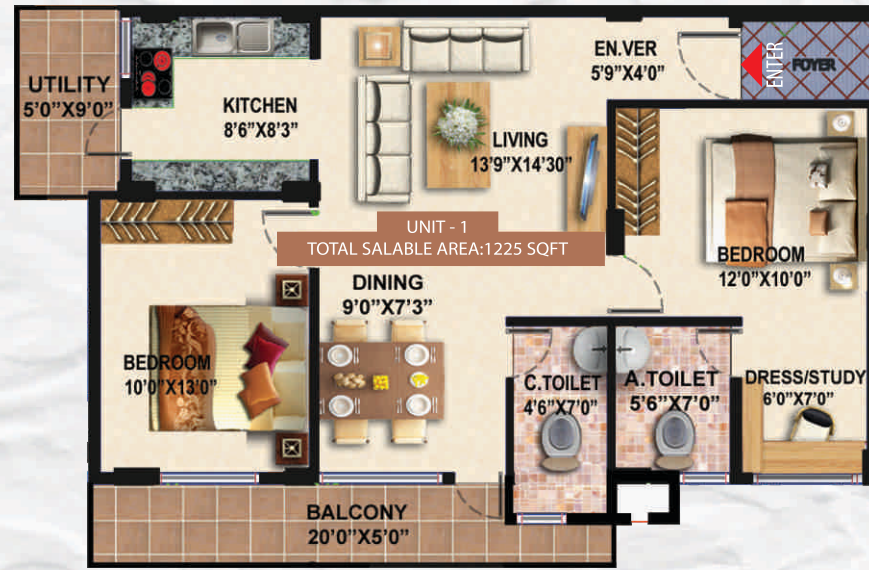
NEAR BY SHOPPING CENTRES

Meenakshi Mall, Gopalan Mall, upcoming Vega City Mall, Big Bazaar, Bangalore Central, Shoppers Stop, Upcoming Galleria Mall.



Total Land Area	: 41,382 Sft
Total No of Blocks	: 3 Blocks
Total No of Apartments	: 88 Nos
Total Number of Floors	: Parking + Ground + 3floors
Type	: Luxury Apartments

TYPICAL FLOOR PLAN



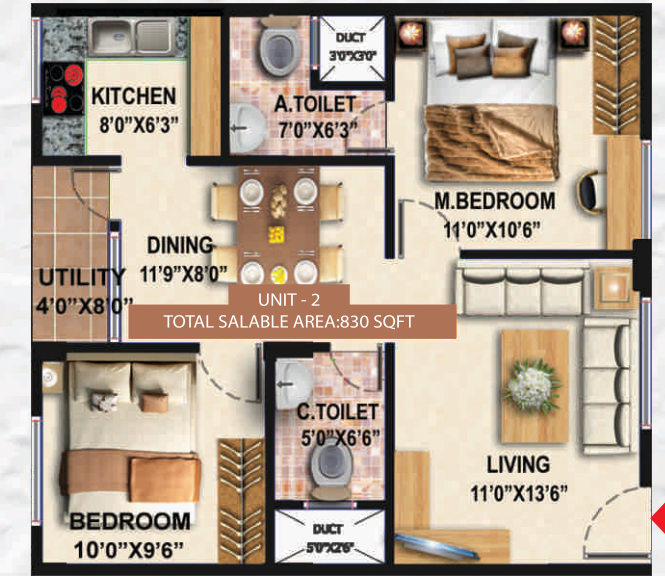
2 BHK - Area:1225 Sft, West Facing



3 BHK - Area:1795 Sft, North Facing



2 BHK - Area:1100 Sft, West Facing



2 BHK - Area:830 Sft, West Facing

INDIVIDUAL FLOOR PLAN - BLOCK - A

INDIVIDUAL FLOOR PLAN - BLOCK - B



3 BHK - Area:1585 Sft, North Facing



3 BHK - Area:1365 Sft, East Facing

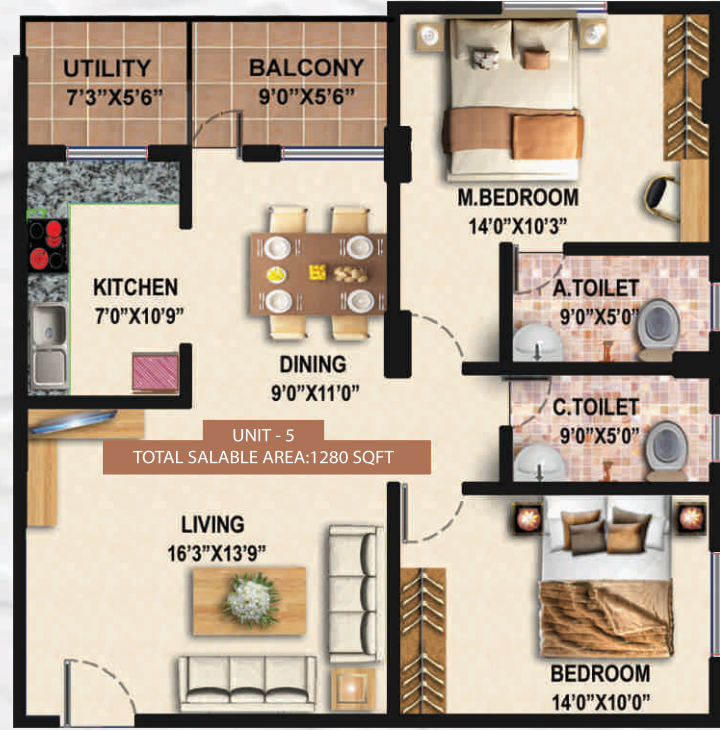


2 BHK - Area:1195 Sft, North Facing



3 BHK - Area:1350 Sft, North Facing





2 BHK - Area:1280 Sft, North Facing



2 BHK - Area:1050 Sft, East Facing



3 BHK - Area:1630 Sft, West Facing



2 BHK - Area:1200 Sft, West Facing

INDIVIDUAL FLOOR PLAN - BLOCK - B

INDIVIDUAL FLOOR PLAN - BLOCK - C



2 BHK - Area:1145 Sft, East Facing



3 BHK - Area:1350 Sft, East Facing



3 BHK - Area:1560 Sft, North Facing



2 BHK - Area:1345 Sft, North Facing



3 BHK - Area:1415 Sft, North Facing



3 BHK - Area:1540 Sft, East Facing



2 BHK - Area:1325 Sft, East Facing



2 BHK - Area:1365 Sft, East Facing



INDIVIDUAL FLOOR PLAN - BLOCK - C



2 BHK - Area:1275 Sft, East Facing



3 BHK - Area:1530 Sft, East Facing



STILT CAR PARKING



S P E C I F I C A T I O N S

RCC Frame Structures

- Concrete 6”/4” Solid block masonry
- Elegant entrance lobbies with anti skid tiles
- Car parking

Doors and Windows

- Main door frame - Teak
- Main door shutter - Teak
- Internal doors - Block board with paint finish
- French windows - UPVC clear float glass
- Windows - Aluminium with clear float glass
- Toilet ventilators are aluminium luvars

Flooring

- Vitrified flooring in living and dining, bedroom and kitchen
- Anti skid tile flooring for balcony and utility

Electrical

- Fire resistant electrical wire of Anchor / equivalent make
- Elegant modular electrical switches of Anchor / Havells make
- Telephone and Television points in living and bedroom

Lift

- 6 passenger lift of reputed make OTIS / KONE / JOHNSON or equivalent make

Toilet fittings and accessories

- Ceramic glazed tiles up to 7 feet
- Sanitary ware - Cera, Parryware or Hindware

Fittings

- CP fitting Jaguar, continental make or equivalent
- Plumbing concealed in medium class CPVC / PVC pipes
- All external plumbing waste water pipes and storm water drains combination of PVC and stoneware pipes

Kitchen

- 20 mm Black granite platform, and stainless steel sink
- 2 feet glazed ceramic tiles above granite platform
- Provision for washing machine and gas connection in utility area

Painting

- Interior - Asian Emulsion paint
- Exterior - Asian weather proof paint
- Main door - Melamine polish
- All other doors - Synthetic enamel paint
- MS grills and railings - Synthetic enamel paint

Power Back up

- Generator for common areas, lifts, pumps and 100% back-up for all the flats
- 3 KVA for 2 BHK & 5KVA for 3 BHK flats

A M E N I T I E S

- Swimming Pool
- Toddlers Pool
- Jogging Track
- Indoor Games
- Fully Equipped Gym
- Children's Play Area
- Senior Citizen Kiosk
- Multi Purpose Hall
- Round the Clock Security
- 100% Power Back-up
- Vaastu Compliant
- Rain Water Harvesting
- Landscaped Garden
- Yoga/Meditation Hall



Dive in for a
Splash of fun

