

Prosperity Now Has A Name

Sharada
Myria

1|2|3 BHK PROSPEROUS HOMES
at Sinhagad Road

Exclusive
1|2|3 BHK FLATS
AT SINHAGAD ROAD



A Project By





Introduction

- ✚ Tune in to the music of chirping birds. Bask in twilight in your terrace. Feel the wind blowing in your hair. Chat with your children. Invite your childhood friends. Enjoy the soothing greens, pollution free air, flowing breeze, relaxed body and rejuvenated mind. Celebrate every moment of togetherness. Create your own space where you can weave your own world of love, trust, happiness and harmony. This earth, wind, sky, breeze, clouds, hills, greenery is your own slice of life. It's our gift to you.
- ✚ An exclusive residential opportunity at a location that is truly unique and exceptionally well connected. Claim it and go on counting your blessings forever.
- ✚ Sharada Myria is full of
 - Comfort & Happiness.
 - Health & Fitness
 - Indoor Games & Sports
 - Nature & Eco-Friendliness
 - Privacy & Security

- ✚ Pune city is currently one of the best IT & Education hubs in India. The climatic conditions & the scenic beauty of environment along with lively atmosphere make Pune an ideal destination for your dream home.
- ✚ Sharada Group brings to you an exceptional state of the art residential project named **"Sharada Myria"**. These homes are ideally designed to match your requirements. They are compact & elegant.
- ✚ Convenience & added comforts like school, hyper market, malls, multiplex & restaurants nearby.
- ✚ Located in the heart of hills, surrounded by picturesque view, away from the crowded roads & pollution.
- ✚ Sharada Myria is sited at Dhayri-Kirkatwadi on Sinhagad Road. The location is best suited for residential projects. With Hinjewadi IT Park & Bio Tech Parks in close vicinity & Mumbai-Pune Expressway being very close, Sharada Myria becomes an ideal destination and hot property.
- ✚ Sharada Myria is a project of compact & elegant homes. It is well crafted scheme for those who seek comfort, convenience, style & elegant way of living.

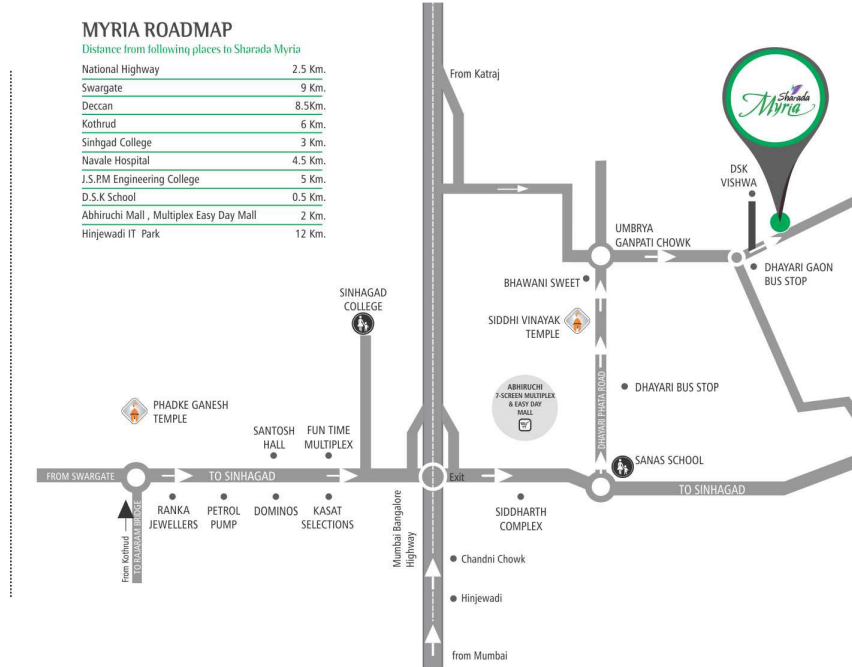




Advantages of Myria

- ✚ Close to Pune-Mumbai expressway.
- ✚ Well connected to main parts of the city.
- ✚ Closely connected to MNC's & IT giants in Hinjewadi.
- ✚ Panoramic views of hills & streams.
- ✚ Flexible choices of various types in 1, 2 & 3 BHK's.

Location Map



Site Add.:- Sharada Myria, Gate No.74, Near Dsk Vishwa, Dhayari Phata, Off Sinhgad Road
Pune-411024

Designed Revell - 93706 38154

Location Benefits

- 🚏 Dedicated bus service
- 🏥 Polyclinic
- 🎒 DSK School
- 💈 Saloon
- 💄 Beauty Parlor
- 🎬 Abhiruchi Multiplex
- 🍽 Themed restaurants nearby
- 🛒 Easy Day super market very close by
- 🏡 Daycare
- 🏥 Hospital

Specifications

STRUCTURE

- Earth Quake resistant R.C.C. frame structure, wall & ceiling.
- All External & Internal walls will in fly ash bricks/blocks.
- External walls finished with sand faced plasters.
- Internal wall & Ceiling finished with smooth coating of Gypsum / Neeru

DOORS & DOORFRAMES

- Elegant main door with lamination and premium quality fittings
- All internal flush doors with oil paints and standard door fittings
- Wooden door frames with moulding patti for main door and bedrooms
- Granite door frame for w.c./bath

WINDOWS

- Powder coated Aluminum sliding windows with mosquito net and safety grills
- Granite / marble window seal

FLOORING

- Vitrified tiles in entire flat
- Anti-skid ceramic tiles for toilets.
- Ceramic tiles for terraces

KITCHEN

- Black Granite platform with stainless steel sink
- Glazed dado up to 7 ft. height over kitchen platform
- Provision for exhaust fan and water purifier
- Sufficient points with adequate power points

TOILETS

- Designer glazed dado tile up to 7 ft. height
- Concealed Plumbing with branded C.P. fittings
- Hot & Cold mixer units for toilets
- Branded Sanitary Fittings
- Provision for exhaust fan & Geyser

ELECTRICAL

- Concealed Electrification
- T.V. & Telephonic points in hall & master bedroom
- Provision for split A.C. in master bedroom
- Provision for Broadband

PAINT

- External walls with cement paint
- Internal walls with oil bond distemper

OTHERS

- Provision for washing machine with waterline and drain in dry balcony
- Anti Cockroach trap for nahani traps

Amenities



○ **Health & Entertainment**

- ✚ Gymnasium
- ✚ Yoga Hall
- ✚ Club House
- ✚ Landscape around Building
- ✚ Community Hall

○ **Eco Friendly Systems**

- ✚ Sewage Treatment
- ✚ Rain Water Harvesting
- ✚ Water Purifier in every kitchen
- ✚ One Solar Water Connection

○ **Sports**

- ✚ Table Tennis
- ✚ Pool
- ✚ Basket Ball Post
- ✚ Chess
- ✚ Carom
- ✚ Cards

○ Security & Safety

- ✚ Intercom Connectivity
- ✚ Security Cabin
- ✚ DG Backup for Lifts & Common Areas

○ Nature & Landscape

- ✚ Landscape Garden
- ✚ Acupressure Path
- ✚ Garden Benches
- ✚ Entrance Features
- ✚ Water Bodies

○ Other Amenities

- ✚ Grand Entrance Gate
- ✚ Fire Fighting System
- ✚ Furnished Entrance Lobby
- ✚ 2-Level Car Park
- ✚ Toddler Zone
- ✚ Stretcher Lift
- ✚ Bus Pickup Point



Sharada Myria Layout



The project is split into 2 wings. “A” wing & “B” wing
Each wing has 8 flats on each floor; both the wings are at 10 storey.

1 BHK



- 1) ALL DIMENSIONS ARE IN SFT.
- 2) ONLY WRITTEN DIMENSIONS ARE SUBJECT TO CHANGE.
- 3) DO NOT SCALE THIS DRAWING.

(THIRD FLOOR) ODD FLOOR

BUILDING 'A' UNIT 308 | 1 BHK

FLAT NO.	CARPET AREA	TERRACE	SALEABLE AREA
A-308	473	72	708.50
	IN SFT.	IN SFT.	IN SFT.

1 BHK

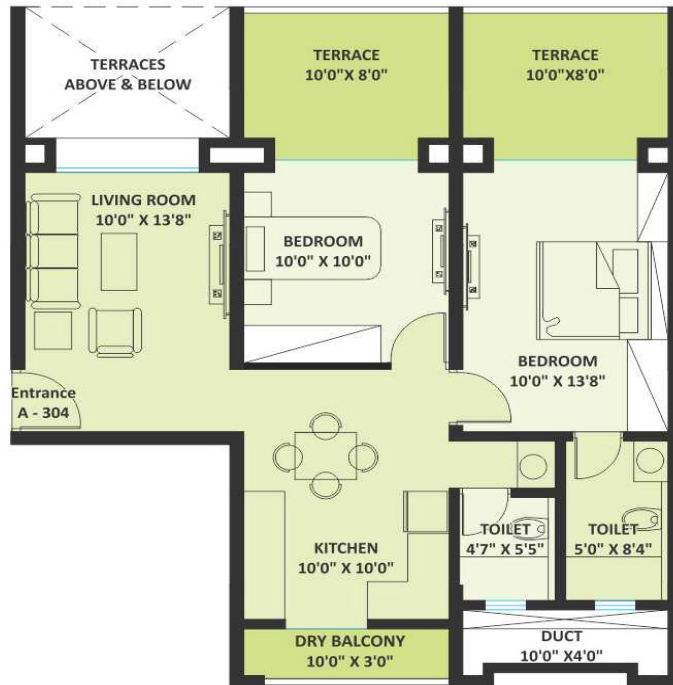


Prosperity Now Has A Name



11/213 BHK PROSPEROUS HOMES
AT SINHAGAD ROAD

2 BHK



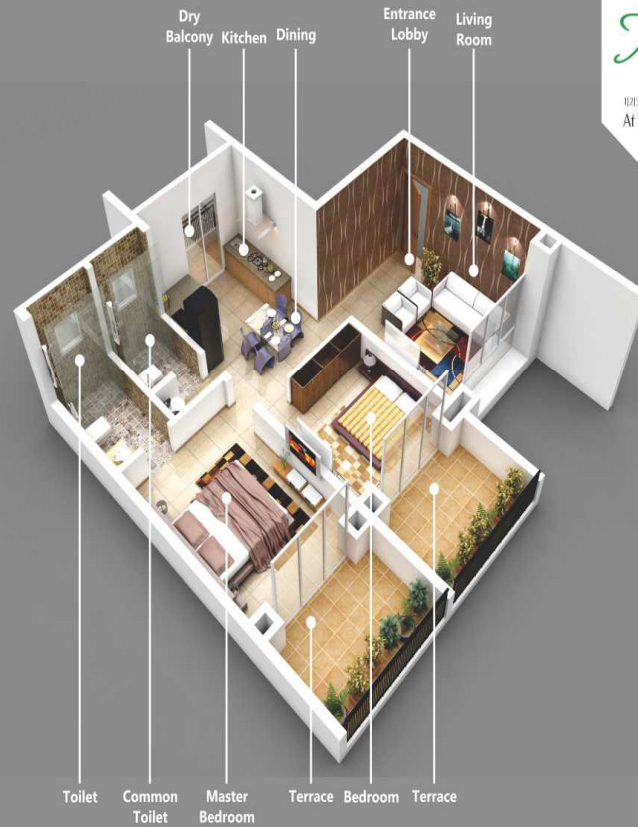
- 1) ALL DIMENSIONS ARE IN SFT.
- 2) ONLY WRITTEN DIMENSIONS ARE SUBJECT TO CHANGE.
- 3) DO NOT SCALE THIS DRAWING.

(THIRD FLOOR) ODD FLOOR

BUILDING 'A' UNIT 304 | 2 BHK

FLAT NO.	CARPET AREA	TERRACE	SALEABLE AREA
A-304	619	72	898.30
	IN SFT.	IN SFT.	IN SFT.

2 BHK



Prosperity Now Has A Name



1071 BHK PROSPEROUS HOMES
AT SINHAGAD ROAD

3 BHK



- 1) ALL DIMENSIONS ARE IN SFT.
- 2) ONLY WRITTEN DIMENSIONS ARE SUBJECT TO CHANGE.
- 3) DO NOT SCALE THIS DRAWING.

(SECOND FLOOR) EVEN FLOOR

BUILDING 'A' UNIT 202 | 3 BHK

FLAT NO.	CARPET AREA	TERRACE	SALEABLE AREA
A-202	953	211	1513.20
	IN SFT.	IN SFT.	IN SFT.



FLOOR PLANS



2ND FLOOR PLAN



3rd FLOOR PLAN



Scheme Approved by five Banks:-





A Project By



SHARADA ERECTORS PVT. LTD.

Sharada Centre, 11/1 Erandwane, Off. Karve Road, Pune-411004

Tel No: 020-25464728 Mobile: 9822548000. Email:sales@sharadagroup.com

www.sharadagroup.com

Contact Us

Head Office

Sharada Group, Sharada Centre, 11/1 Erandwane, Near Nalstop,

Pune-411004

Phone: 020 – 25464728.

E-mail: sales@sharadagroup.com

Site Office:

SHARADA MYRIA

GAT NO.74, Near DSK Vishwa, Dhayari Phata

Off Singhagad Road, Pune-411024

For Booking Contact: +91 72760 44455 | +91 72760 44466