



OLYMPIA

rise to life

2, 2^{1/2} & 3 BHK Luxurious Homes
WAKAD





Everything about Olympia is special. Out of the ordinary. A welcome break from the typical. It's a shift from the routine to the refined, from the common to the luxurious.

Enjoy the rarity of expansive living – in spacious 2, 2.5 & 3 BHK apartments designed as per Vaastu Shastra. Let the wide windows and cross ventilation refresh the senses, while you experience the luxury of quality specifications and fine finish. Above all, revel in the joy of recreation and rest – in homes embellished with scenic surroundings and top-of-the-line amenities for relaxation, fun and fitness.



Towering

blend of form & functionality



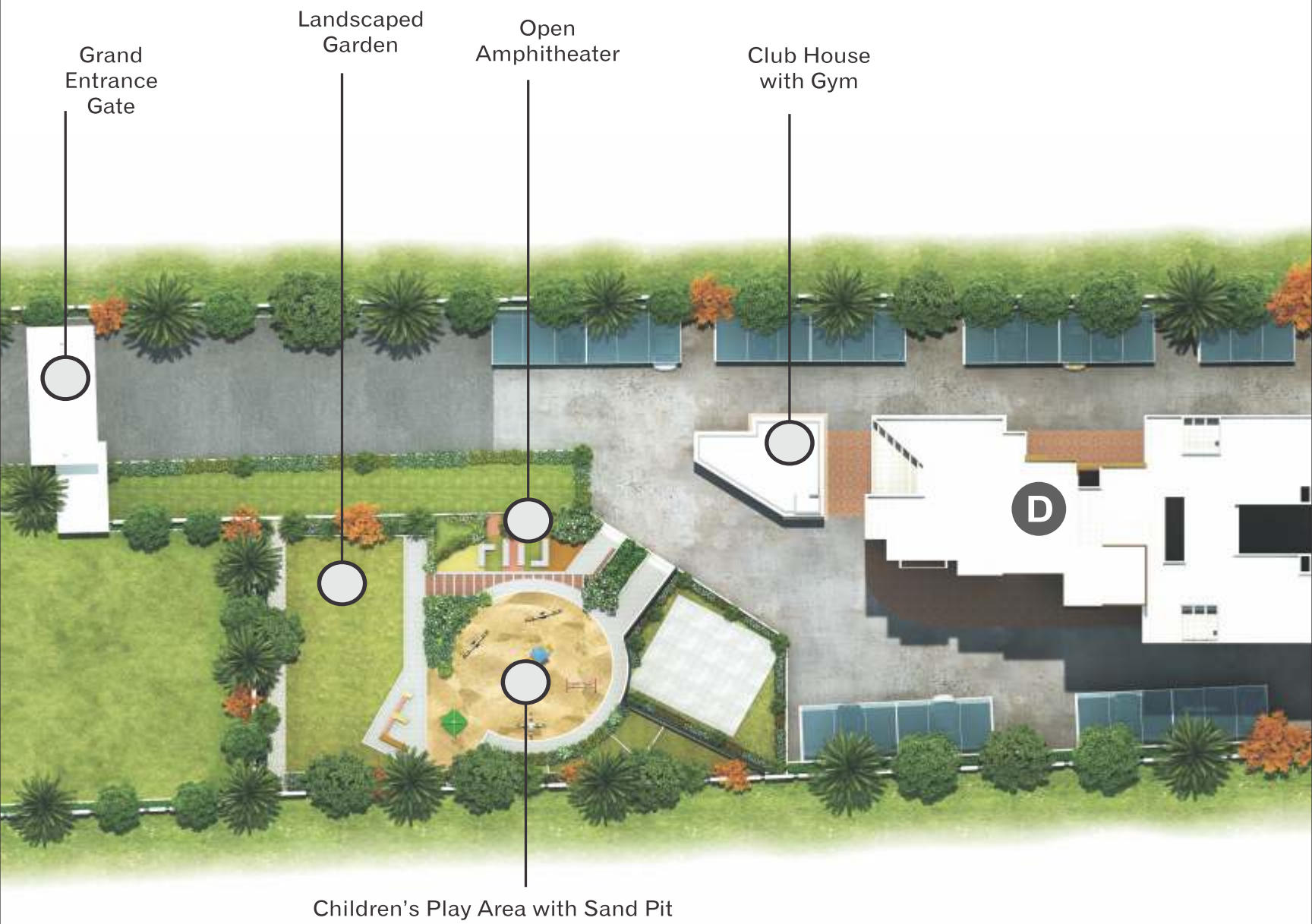
Soothing

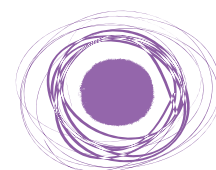
balm for the senses

The ambience of Olympia is quiet and peaceful. It's a haven of tranquility where you can enjoy cool, fresh breezes, feast your eyes on panoramic views and indulge in a luxurious setting that pampers your senses.









OLYMPIA



Enchanting

avenues for health and happiness

Olympia strives to create more than just comfortable homes – a healthy lifestyle. That's why a full range of top-notch amenities have been planned. From gardens to gym, jogging track to barbeque zone and so much more, Olympia encourages residents to make exercise and outdoor activities an integral part of life. Come and find fitness at Olympia.



Elevating your style quotient

Olympia's towering elevation is a tribute to your good taste. Attractive and sprawling, with each wing coloured in a different shade, Olympia will stand out in the fast-growing environs of Wakad with its impeccable planning as per Vaastu, spacious style and eye-catching architecture.





Refreshing

body and soul

A splash pool for babies offers the perfect recreation for your little ones. Watch them make friends with other children, splash each other and gurgle with joy as they exercise their young muscles in cool, refreshing water. No doubt, your child will demand to be taken to this 'water park' every day! What's more, there's also a sandpit and play area to ensure your children get a good dose of health and happiness at Olympia.

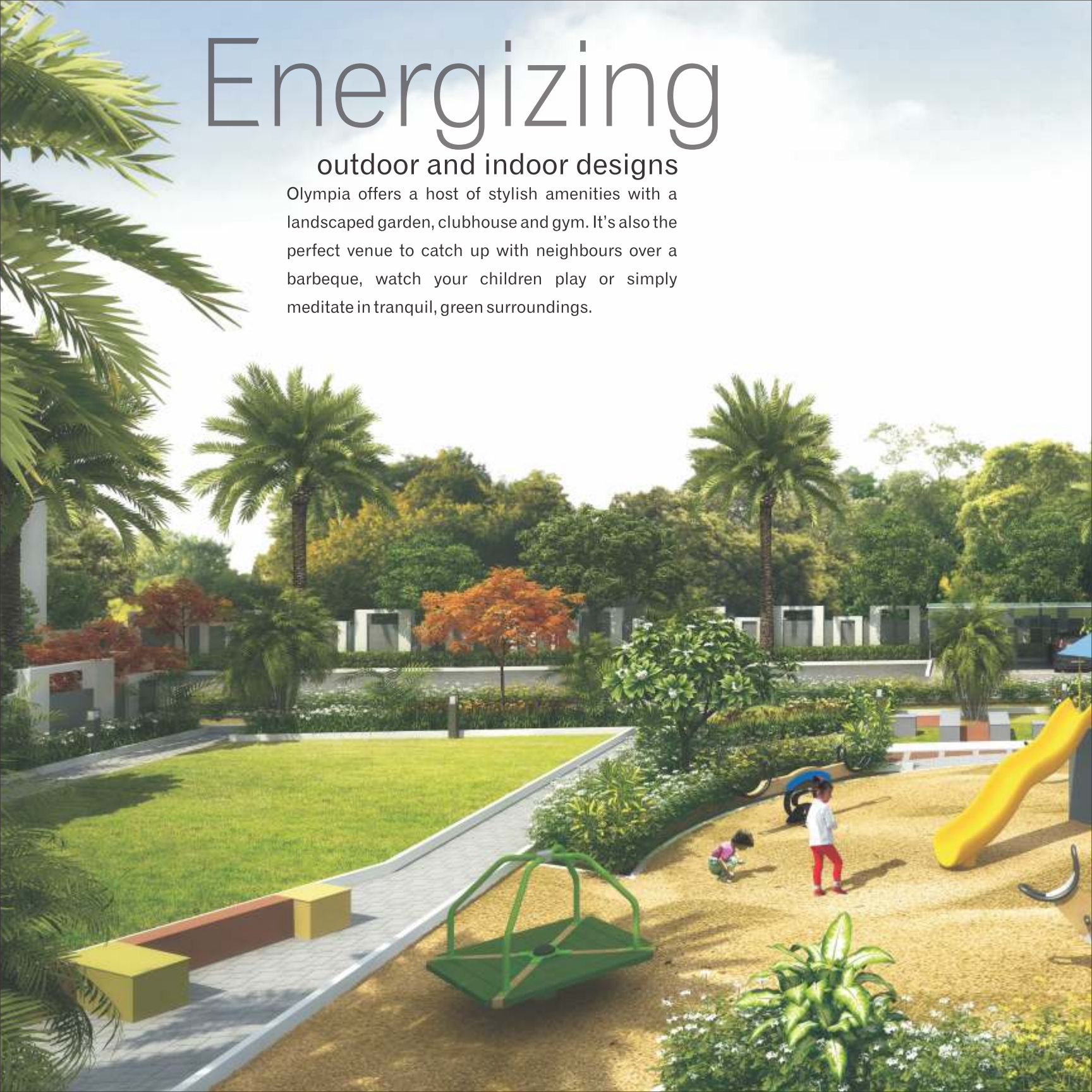




Energizing

outdoor and indoor designs

Olympia offers a host of stylish amenities with a landscaped garden, clubhouse and gym. It's also the perfect venue to catch up with neighbours over a barbeque, watch your children play or simply meditate in tranquil, green surroundings.





CREDITS

ARCHITECT
VK:a Architecture

R.C.C. CONSULTANT
Hansal Parekh

LEGAL ADVISER
Jitendra Pawar

VAASTU CONSULTANT
Dr. Raviraj Vastu

MARKETED BY
Jai Ganesh Services

STRATEGY CONSULTANT
Filament Communique

A project by



Sr. No. 121/3, New Mumbai - Pune Highway, Old Ramanand Mangal Karyalay,
Bhumkar Chowk, Wakad, Pune - 411 057.

Call: 020 - 6060 6048/9 | www.olympiawakad.com





Welcoming in style

The entrance lobby greets you with style and elegance – setting the mood for the rest of the project. It's your introduction to the gracious design and aesthetic planning that make Olympia a treat for all senses. Enjoy the grand architecture and decorative tiling, the elegant façade and attractive stairs – they'll all lead you to an experience you'll be proud to flaunt – and love to come home to.



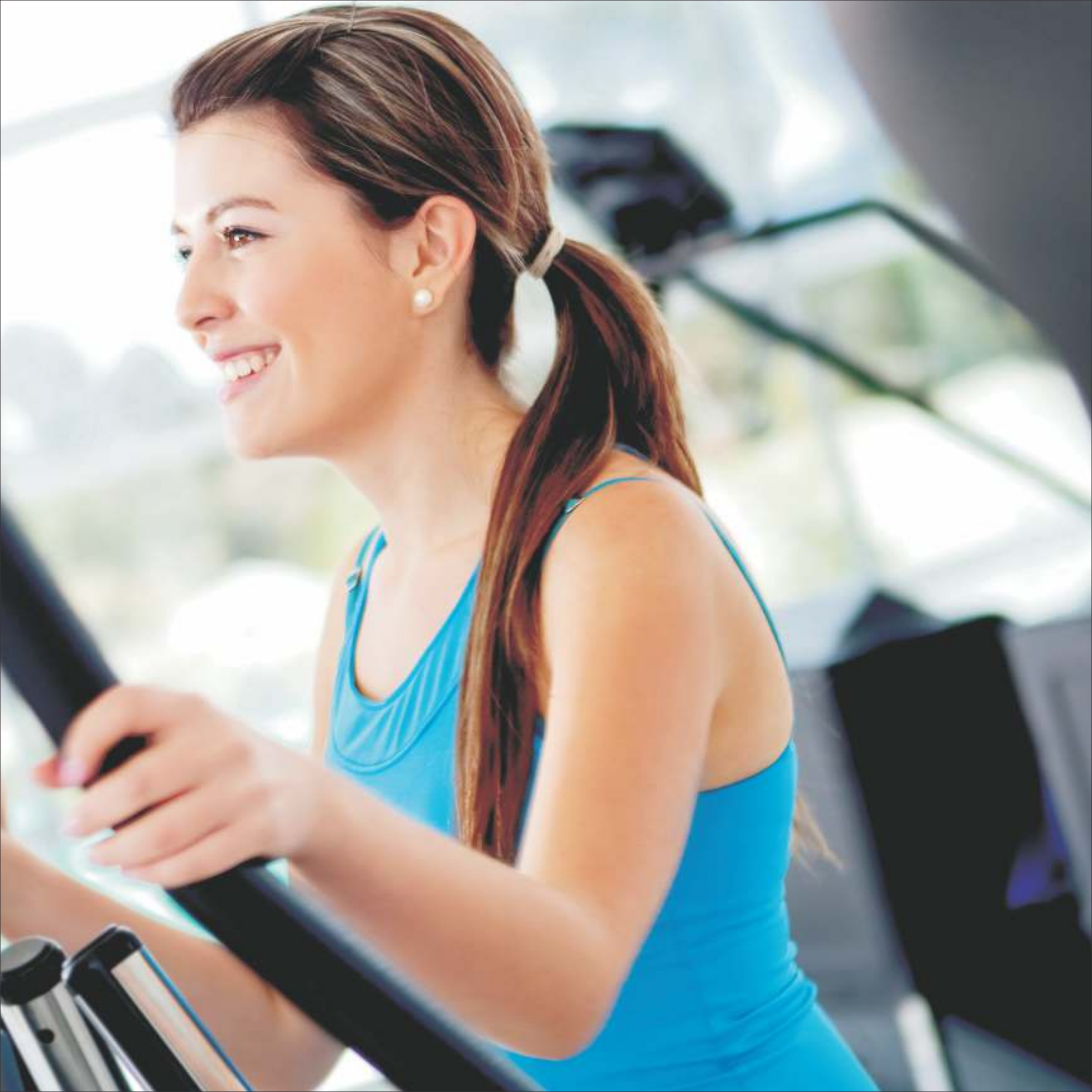


Facilitating

fitness of body and mind

Just visit the Olympia gymnasium with its state-of-the-art equipment and you'll be tempted to make workouts a daily habit. Burn calories, tone muscles and discover new levels of fitness at the gymnasium and other amenities.





Calming

spaces for yoga & meditation

The location and design of Olympia promises residents a haven of tranquil bliss. The ideal ambience to escape the noise and pollution of the city, soothe tired nerves and discover revitalizing peace. Meditate on your scenic terrace, do yoga under open skies or simply enjoy a quiet chat on the lawn with your neighbours – peace of mind guaranteed!



amenities

- Beautifully designed & illuminated landscaped garden
- Baby splash pool
- Mp4 theater
- Ample parking for each flat
- Solar heating system for hot water
- Rain water harvesting
- Senior citizens zone
- Decorative main gate with security cabin
- Attractive entrance lobby
- Individual name plates at entrance
- Automatic/Hydro-pneumatic water level controller
- Staircase and landings finished with decorative tiles
- Automatic on/off light system on stairs
- Fire-fighting system (as per PCMC requirements)
- Multipurpose club house with gym & yoga
- Layout as per Vaastu Shastra
- Earthquake resistant RCC framed structure
- Visitor's car parking area
- Intercom facility
- Children's play area with sand pit
- Jogging track
- Power back-up for common lights in parking, staircase, lift and water pumps





Inviting

ambience of bliss

Every Olympia home is an invitation. To discover warmth and happiness, pleasure and prosperity. Meticulously designed as per Vaastu, the apartments are east-west facing, with rooms that are especially spacious and airy. The specifications and fittings are chosen with care to create a setting for a classy home – and above all, an elegant, luxurious lifestyle.





specifications

FLOORING

Vitrified 2' x 2' tile flooring in all rooms

WALLS

Gypsum finished internal walls

DOORS

Attractive main door with night latch, safety chain and peep hole Internal doors of hot pressed finish with good quality fittings Granite/Marble door frames

WINDOWS

Powder coated aluminum sliding windows and granite frames

KITCHEN

L-shaped granite kitchen platform with SS sink

TOILETS

7' high dado of printed ceramic tiles

Doors with powder coated aluminum section and Bakelite sheets

Concealed plumbing

Hot & cold mixer of Kohler or equivalent make

ELECTRICAL

Concealed copper wiring with cable & phone point in master bedroom

Ample electrical points

AC point in bedrooms

Provision for exhaust and geyser in bathroom

Provision for washing machine in dry balcony

Provision for oven, mixer, water purifier and exhaust in kitchen

PAINTS

Premium quality paint for internal & external walls





Luxurious 2 BHK



Luxurious 2.5 BHK



Luxurious 3 BHK
Type Lifestyle



Luxurious 3 BHK
Type Majestic



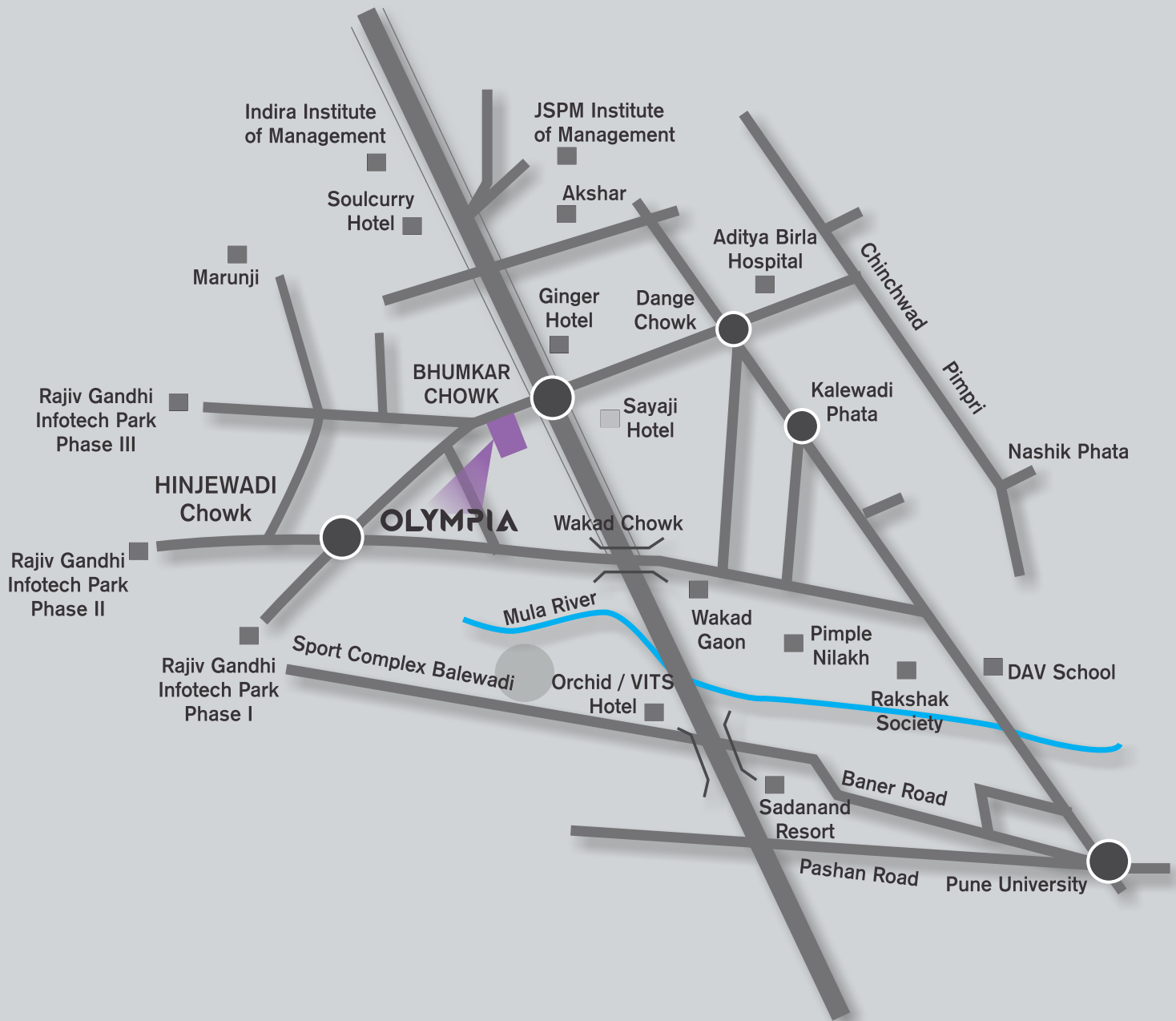
Illuminating

the way to a superior lifestyle

Olympia invites you to discover a contemporary lifestyle in the lap of modern comfort. With spacious, well-planned homes embellished with the finest amenities, green expanses and scenic landscaping. It's a whole new way of life, a bright new world of class and convenience. Make it yours today.







KEY DISTANCES:

SCHOOL & COLLEGES: 5 MINS. | HINJEWADI IT PARK: 5 MINS. | MUMBAI - PUNE EXPRESSWAY: 10 MINS.

ADITYA BIRLA HOSPITAL: 10 MINS. | MALL & MULTIPLEX: 15 MINS. | PIMPRI - CHINCHWAD: 15 MINS.

RAILWAY STATION: 15 MINS. | PUNE UNIVERSITY: 20 MINS. | SAHARA INTERNATIONAL STADIUM: 20 MINS. | AIRPORT: 35 MINS.

The image features a solid purple background. In the lower half, there is a large, abstract graphic consisting of several concentric, slightly irregular circles. The innermost circle is a lighter shade of purple and contains the word "OLYMPIA" in a bold, white, sans-serif font. The surrounding circles are made of thin, overlapping lines in various shades of purple, creating a sense of depth and movement.

OLYMPIA