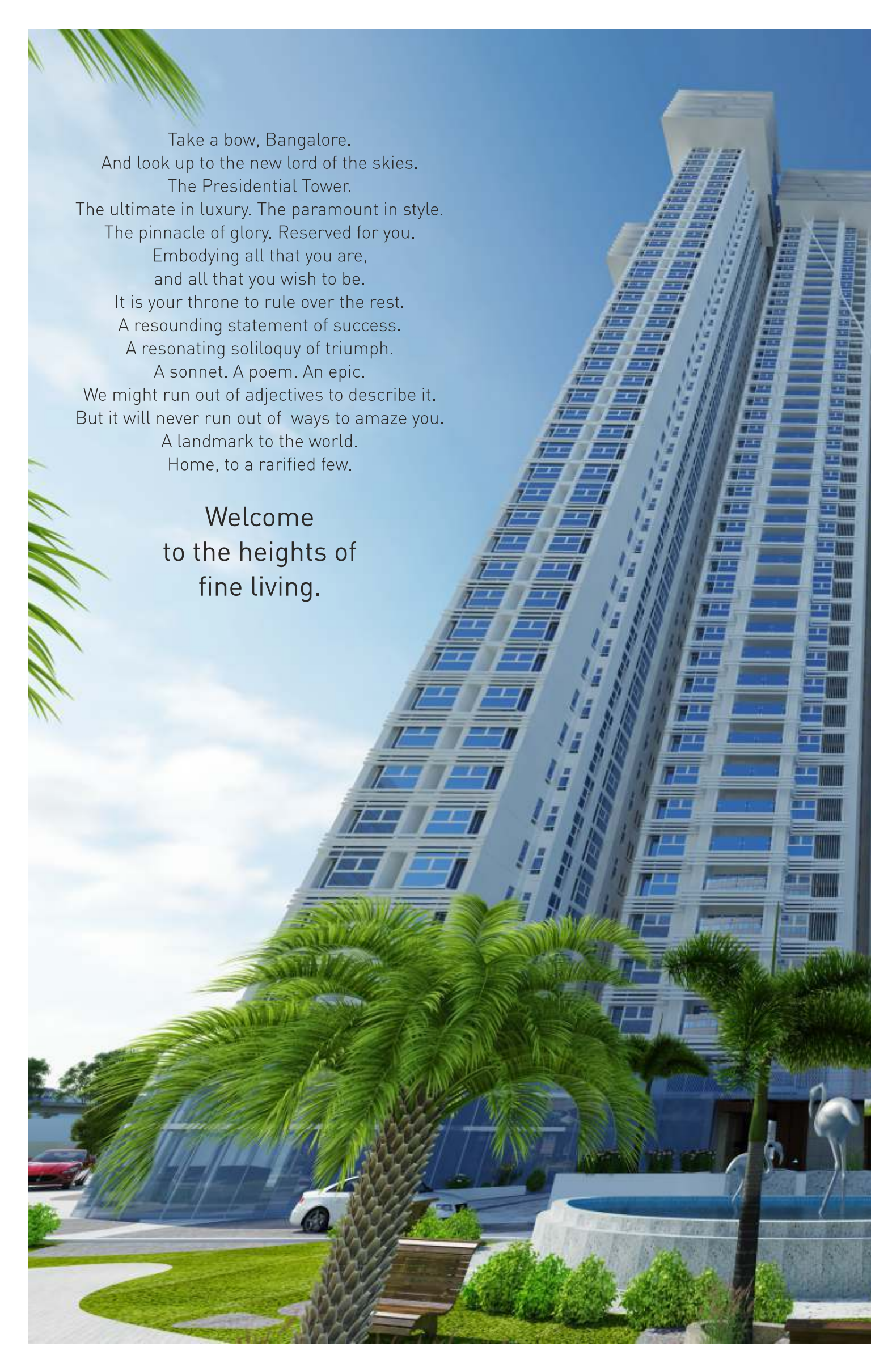




PRESIDENTIAL  
TOWER



50 Levels of Luxury  
at South India's Tallest Tower.



Take a bow, Bangalore.  
And look up to the new lord of the skies.  
The Presidential Tower.  
The ultimate in luxury. The paramount in style.  
The pinnacle of glory. Reserved for you.  
Embodying all that you are,  
and all that you wish to be.  
It is your throne to rule over the rest.  
A resounding statement of success.  
A resonating soliloquy of triumph.  
A sonnet. A poem. An epic.  
We might run out of adjectives to describe it.  
But it will never run out of ways to amaze you.  
A landmark to the world.  
Home, to a rarified few.

Welcome  
to the heights of  
fine living.





# LOOK DOWN UPON THE WORLD. BECAUSE YOU CAN.

Living in the tallest residential tower in Bangalore is bound to have its privileges.

For one, when someone asks you,  
“Where do you live?”

Just point in the direction and they'll know.

Towering an imposing 50 stories from ground up,  
Presidential Tower lives up to its name.

Guaranteed view from the top, no matter  
which floor you are on.

# EVERY KING DESERVES A THRONE. HERE'S YOURS.

When you are at the helm of your life, how can your home be far behind?

At Presidential Tower, we have ensured that your home is the pinnacle of splendor you desire it to be. Crafted by some of the best minds in the industry, it oozes a sense of class and style that you've witnessed only in the movies.

Just 4 apartments per floor, open from all sides and well ventilated, spacious, reflecting artistic and aesthetic sensibilities, this is the way you were meant to live your life. After all, a person who requires no introductions should live in a home of equal reputation.







# A ROYAL ABODE. IN A DISTRICT OF POWER.

Manhattan of Bangalore. That's the moniker Yeshwatpur has adopted. Who are we to argue? After all, it does play host to some of the rich and famous visitors at its luxury hotels like The Sheraton and Taj Vivanta. And with the World Trade Centre and Orion Mall orchestrating the power play of commerce.

This locality does not seek validation. What it needs, though, is a crown jewel. That is exactly what Presidential Tower is. And if you don't claim your rightful place in it, who else can?

WTC/ Orion Mall



Taj Vivanta



Yeshwantpur Metro Station



## Towards Tumkur

Metro Rail	: 200 mtrs
Outer ring road	: 600 mtrs
School	: 200 mtrs
Hospitals	: 1 km
Malls 7 Hotels	: 1 km
MG Road	: 10 km
Malleshwaram	: 2.5 km
Sadasshivnagar	: 5 km



# LOCATION



**LEGEND :**

- 01. MAIN ENTRY/EXIT
- 02. SECURITY KIOSK
- 03. VISITOR'S CAR PARKING
- 04. DROP OFF PLAZA
- 05. WATER FEATURE WITH FRAME WALLS
- 06. HALF BASKET BALL COURT
- 07. TENNIS COURTS (2)
- 08. SAND PIT WITH CLIMBING WALL
- 09. REAR DROP OFF ZONE
- 10. SPILL OUT AREA
- 11. WATER FEATURE
- 12. LANDSCAPE CUT-OUTS
- 13. GIANT CHESS
- 14. LUDO
- 15. SNAKE AND LADDER
- 16. HOP SCOTCH COURT
- 17. SEATING

 PAVILLION  
 LILY POND  
 TREE PLANTING  
 SHRUB PLANTING  
 LAWN MOUND

MASTERPLAN









# THE LANDSCAPE

The beautifully designed structure with its lusciously inviting curves is just half its beauty. The half that the world will consider revered. The finest of its features like the exquisite entrance plaza, the pebbled walkways, lush greenery, tropical landscaping, the pastel tones of canopy trees, the gurgling water bodies, and the aromatic plants that inhabit 85% of the total land area have only one purpose. And it is to indulge you.







● 85% open spaces

● Fountains

● Water bodies

● Large Swimming pool

● Temple Plaza

● Tennis courts

● Huge Amphitheater

● Hopscotch Court

● Tree-Lined Jogging Track

● Toddler's Park with Grand Parents joy viewing area

● 3 Feature-Rich Clubs



# A ROYAL WELCOME. FOR SOMEONE WHO DESERVES NOTHING LESS.

Wooden ceilings, walls embellished with Italian marble, exquisite modern art masterpieces. Welcome to the annals of majesty. A privilege preserved for a select few. For those who rise above the rest. Every time you walk through these corridors of power and prestige, you will be reminded of your supremacy. After all, it is your destiny to reign.



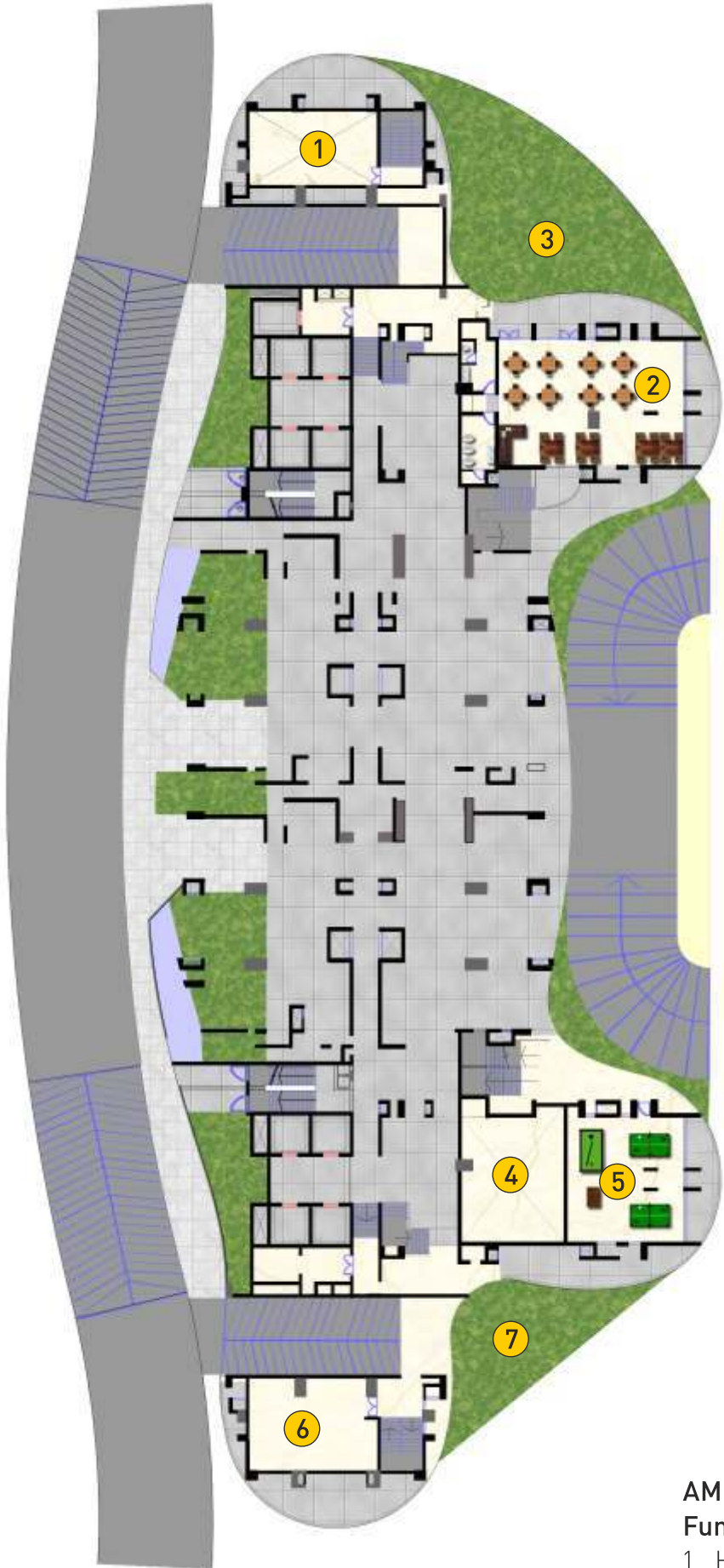


# THIS IS WHAT YOU SEE AT THE GROUND FLOOR

- 5 star Hotel standard lobby and lounge
- Drive into/walk into large volume landscaped entrance
- 3 tier security monitoring.
- Expansive meeting spaces in extensive Balinese landscaped environs.
- 4D Home Theater.
- Abundant space with lawn, to host 3 Parties at a time.
- Children's play area with lawn.
- Dance Studio.
- Golf Simulator.
- Games and recreation area
- Business center.
- World class gym with imported equipment.
- Squash court..
- Italian marble clad lift lobbies.



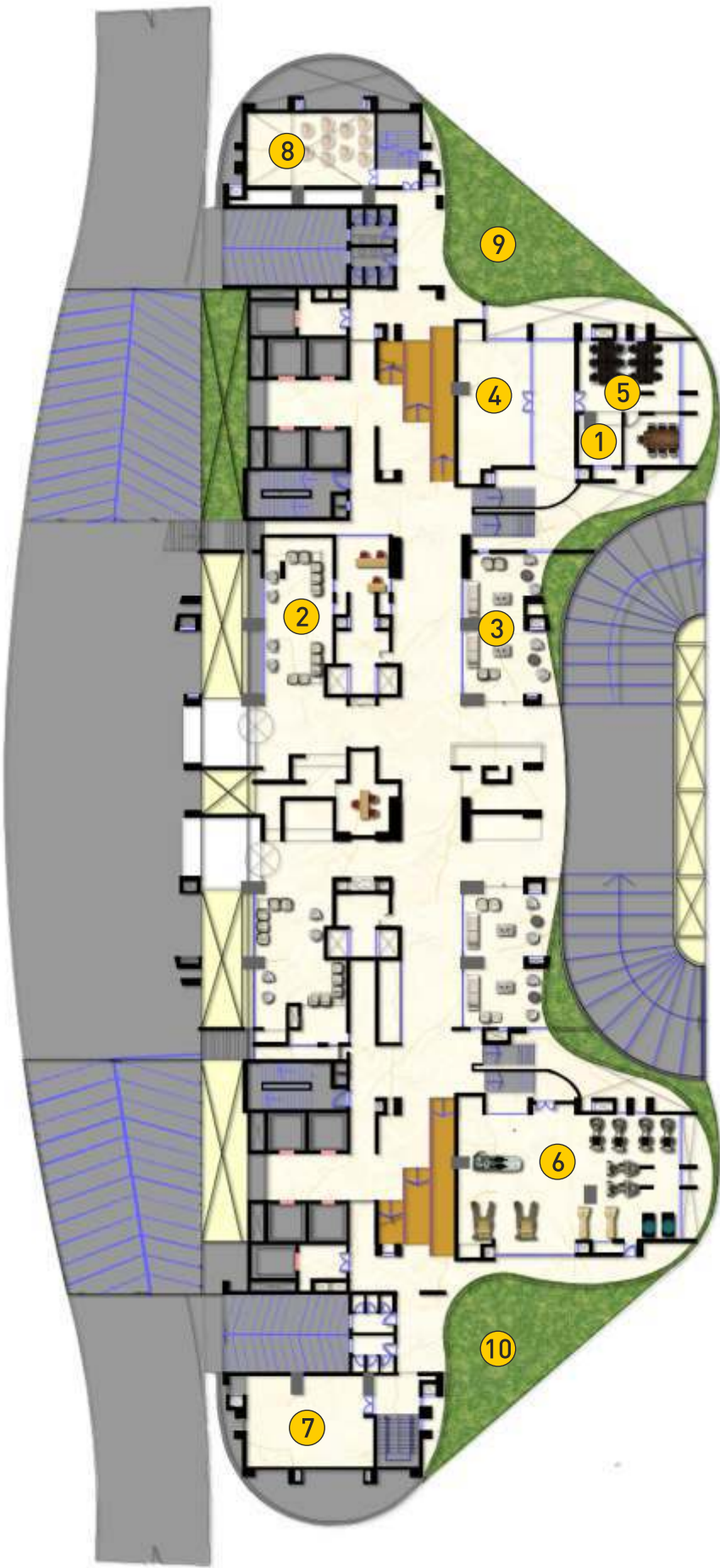
# GROUND FLOOR



- AMENITIES for  
Fun n Frolic on the Ground!**
- 1. HOME THEATRE
  - 2. PARTY SPACE
  - 3. PARTY LAWNS
  - 4. SQUASH COURT
  - 5. GAMES AREA
  - 6. GOLF SIMULATOR
  - 7. CHILDREN'S PLAY AREA



# FIRST FLOOR



- SPECIAL AMENITIES**
- 1. RECEPTION
  - 2. PUBLIC LOUNGE
  - 3. PRIVATE LOUNGE
  - 4. DANCE STUDIO
  - 5. BUSINESS CENTER
  - 6. GYM
  - 7. HEALTH CLUB
  - 8. HOME THEATER
  - 9. PARTY SPACE AT LOWER LEVEL
  - 10. KIDS ZONE AT LOWER LEVEL

# A HOME IN THE SKY. FOR THE MASTER OF MEN.

You are special. And you know it. The rich and powerful consider you rich and powerful. And you deserve much, much more than a humble abode. Presenting the Sky Villas at Presidential Tower. 16 Villas with unobstructed breathtaking views of the city.

A statement of luxury, grandeur and fine taste. Complete with your own personal elevator. Where walls aren't built to confine, but to inspire. Your abode. Flirting with the clouds.





## “VILLAS IN THE SKY”

5270 sft. to 7030 sft.

- Large glass facade for uninterrupted view of the city
- All spaces surrounded by landscaped zone.
- Bask in the sun drenched private space in the jacuzzi in master bedroom
- Two layered glass faced walls for best of views and sustainability.
- Centralized VRV system.

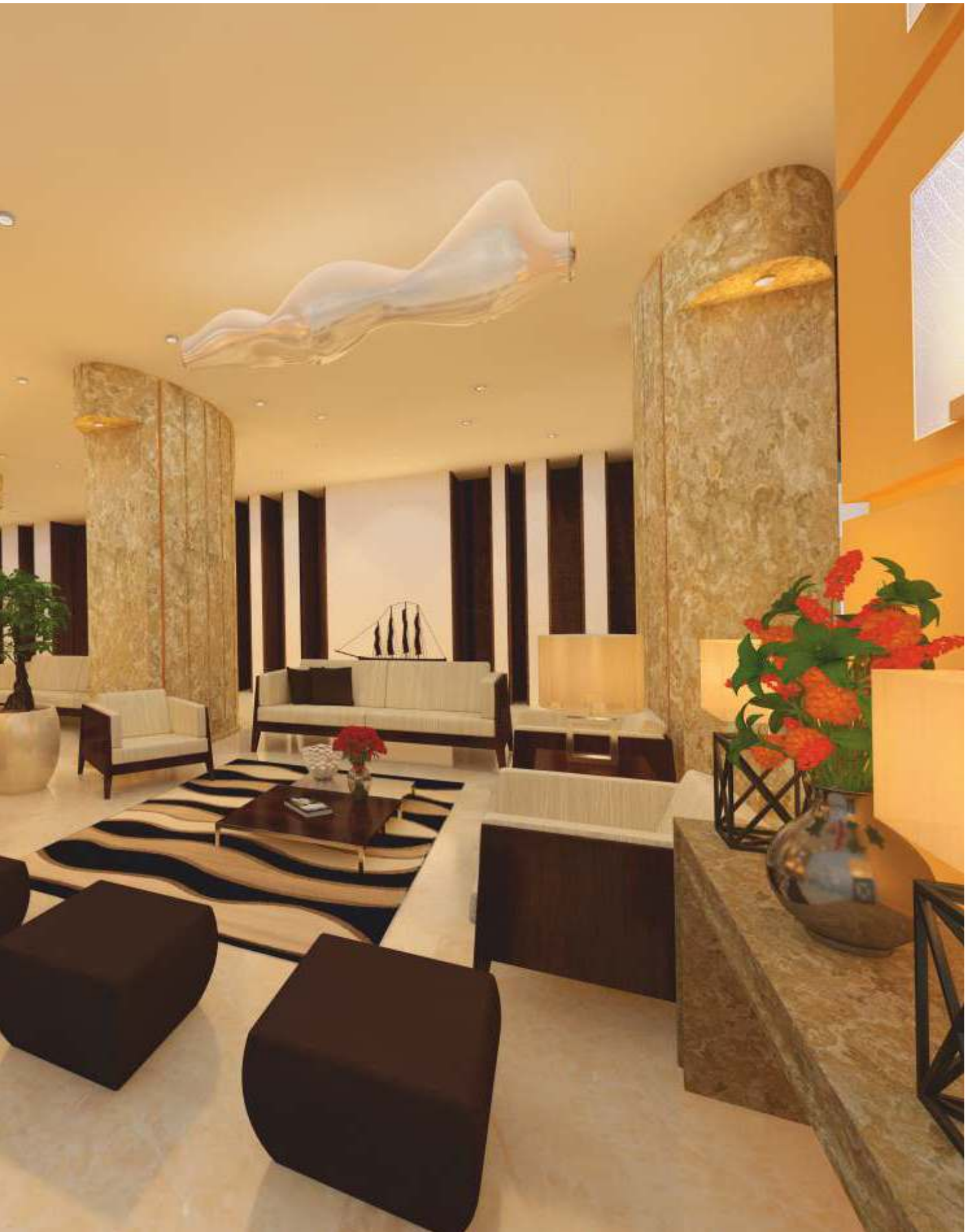








- The Presidential Tower features 2 blocks, The South Block and The North Block.
- 3 BHK units starting from 2310 sft.
- 4 BHK units starting from 3055 Sft .
- Sky Villas starting from 5270 Sft.



# TYPICAL FLOOR PLAN A BLOCK



## ATTRACTIVE OPTIONS TO CHOOSE FROM...

BLOCK - A TYPICAL FLOOR PLAN	UNIT NOS	TYPE	SALE AREA PER UNIT (SQFT)
BLOCK - PA			
REGULAR UNITS			
2 <sup>ND</sup> TO 45 <sup>TH</sup> FLOOR	01	3 BHK with Servant's room	2335
	02	3 BHK	2310
	03	4 BHK with Servant's room	3055
	04	3 BHK with Servant's room	2310
PREMIUM UNITS			
46 <sup>TH</sup> TO 49 <sup>TH</sup> FLOOR	PA 4601-PA 4901	4 BHK	5875
46 <sup>TH</sup> TO 47 <sup>TH</sup> & 48 TO 49 <sup>TH</sup> FLOOR	PA 4602 & PA 4802	5 BHK DUPLEX	7030
	PA 4603 & PA 4803	4 BHK DUPLEX	5330



# TYPICAL FLOOR PLAN B BLOCK



BLOCK - B TYPICAL FLOOR PLAN	UNIT NOS	TYPE	SALE AREA PER UNIT (SQFT)
BLOCK - PB			
REGULAR UNITS			
3 <sup>RD</sup> TO 45 <sup>TH</sup> FLOOR	01	3 BHK	2310
	02	3 BHK	2310
	03	4 BHK with Servant's room	3055
	04	3 BHK with Servant's room	2415
PREMIUM UNITS			
46 <sup>TH</sup> TO 49 <sup>TH</sup> FLOOR	PB 4601_ PB 4901	4 BHK	5690
46 <sup>TH</sup> TO 47 <sup>TH</sup> & 48 TO 49 <sup>TH</sup> FLOOR	PB 4602 & PB 4802	5 BHK DUPLEX	7030
	PB 4603 & PB 4803	4 BHK DUPLEX	5270

# HIGH END SPECIFICATIONS

- Beamless ceilings with very few columns
- Internal plastering with Gyproc from Saint Gobain for smooth surfaces
- Internal walls with Royale emulsion paint
- Main door 8' high with architrave
- Windows - Double Glazed units with bug screen
- High end engineered marble in Living, Dining, Bedrooms & Kitchen
- Hand rails – SS in Balcony with glass balustrade





- Vanity wash basins in toilets
- Imported Bathroom fixtures from Europe.
- Master Bath with exquisite shower panel and shower partition
- Dedicated space for walk in wardrobes
- Separate Servants room, with attached toilet.
- Large and deep decks attached to living rooms







# Your Home, Smart Home, Smart Living.

---



Wi-Fi Campus



Sensor Lighting in  
part of Basement,  
Corridors, Lifts &  
in all Toilets



Video Intercom  
Facility from  
Security Lobby



Home monitoring  
thru Tablet enabled  
IP camera in Living  
/Dining







A photograph of a modern building with a glass facade, partially obscured by a row of palm trees in the foreground. The scene is set during sunset or sunrise, with a warm, orange glow in the sky. In the foreground, there are several large, round, woven planters containing white flowers, and a row of palm trees. The building's glass reflects the sky and the surrounding environment.

# YOUR WISH. THE WORLD'S COMMAND.

Allow us to take you back to a time when 'Royal Treatment' wasn't just a word thrown around far too casually. And considering your stature in the society that you prevail over, it is not just a job, but a privilege to wait on you.

Our premium concierge services take care of your every need. Be it a dinner reservation, or a business trip, or just a weekend getaway, a touch of a button is all it takes. And in all fairness to you, that is all it should take.







NEW HEIGHTS OF LUXURY





# SKYPARK

A LITTLE SOMETHING.

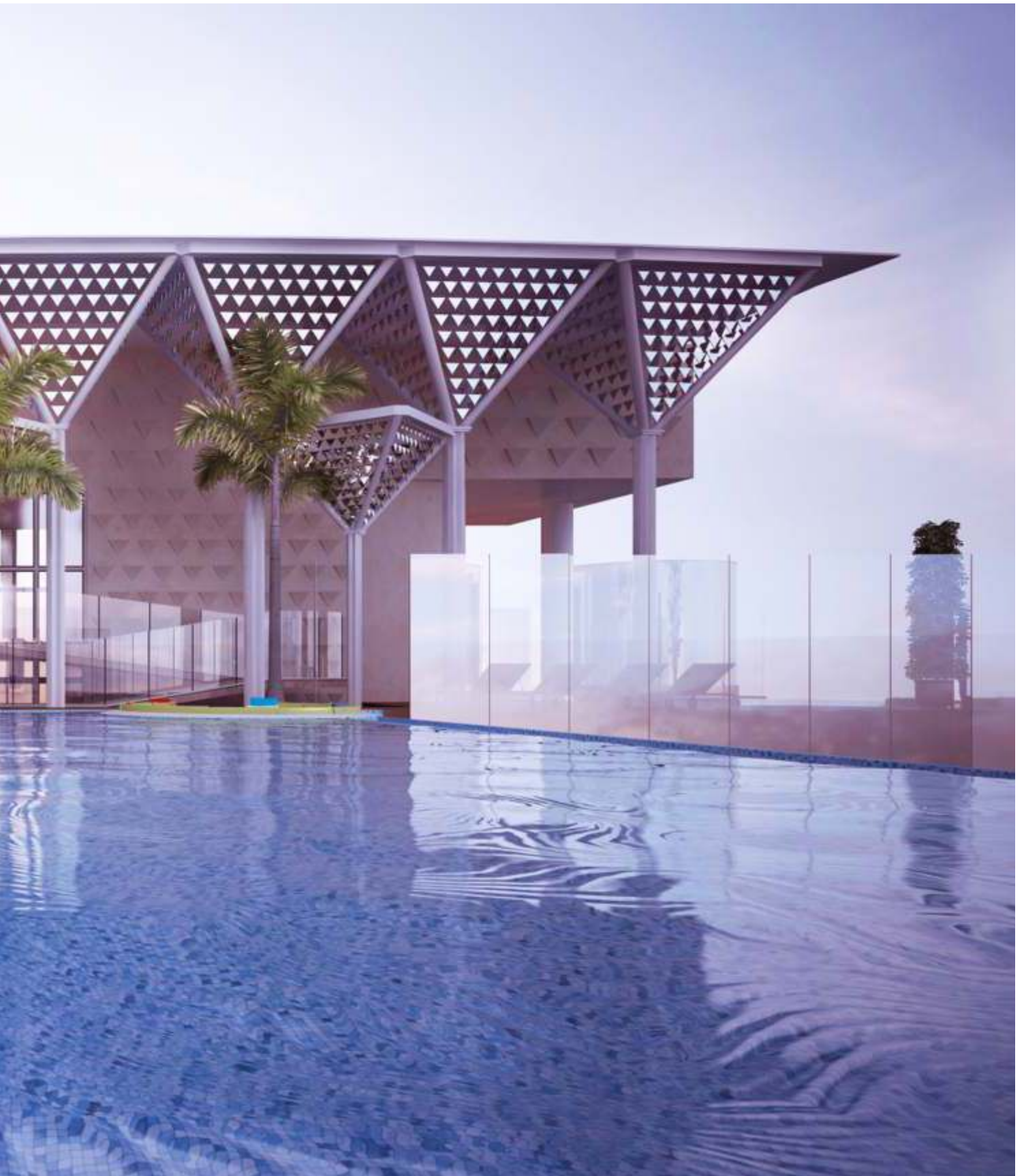
FOR SOMEONE WHO HAS EVERYTHING.



YOUR OWN URBAN PARADISE



For someone who has worked hard to get to where you are today, a few indulgences are welcome. So don't hold yourself back. Let your hair down. And proceed to the Sky Park where the finest pleasures in life await you. With an infinity pool, illuminated cylindrical bar counter, a stylish dance floor, Jacuzzi, health club, a viewing deck, roof top party area and so much more, this is life at its highest point.



# THE SKYPARK



## HIGHLIGHTS:



**INFINITY POOL** - Plunge in the highest pool in the south of India. Allows for lap lengths which cater to the health conscious, sprinkled with sunken seating for an unmatched experience.



**FUN POOL** - For the fun loving group and kids, a shallow depth pool with Jacuzzi tubs is ideal to unwind & have a blast.

**SKY BUFFET** - A dedicated space off the main party area, with discreet & well planned back of the house support for catering by external agencies. A dedicated buffet table for Sunday brunches to midnight parties

**DANCE FLOOR** - At the edge of the party space is a circular dance floor in safety glass that is designed to change color based on the mood and tempo of the users

**BAR COUNTER** - An illuminated cylindrical bar counter forms the focal point from the lift lobby with 360 degree bar counters. The multi level seating around the bar gives a varying user perception.

**BRIDGE GYM** - A linear gym housing exclusive gym equipment with a city view for every user. The unique shape reflects agility and slenderness which is a reflection of the desire for fitness.



**HEALTH CLUB** - A compact health club with the sky pool. Set around the fun pool there are dedicated cylindrical forms that house massage room, sauna and steam with proximity to change and shower areas. A Jacuzzi at the edge adds to the fun and health experience.





**MEDITATION ZONE** - A discreetly tucked away area having quiet and tranquility, is the meditation zone at the terrace. The area is open to sky and allows for individual use or for group yoga activities.

**TERRACE PARTY DECK** - Capitalizing on the unique position of its height and the panoramic city view, the terrace party zone is created to host special brunch parties or fashionable cocktail dinners. Outdoor furniture and seats in pavilions, marquees and tensile roofs enhanced with mood lighting add to the uniqueness of the terrace party. High quality outdoor furniture (moveable and fixed combination) adds style to the comfort.

**OUT DOOR DECK AND SEATING** - For all the users who just want to come up to the terrace and enjoy the sunset or the summer breeze, a large area in the central wing is provided for multipurpose activities. A few steps in the area allows for small performances or viewing a cricket match.

**VIEWING GALLERY** - A glass blob observatory that will be the highest elevated level in Bangalore. The Viewing gallery allows a panoramic view of up to 60km on a clear day and the fixed binoculars allow for viewing details of the horizon. The observation deck has the option of open to sky and a covered roof. The roof of the observation deck is lined with solar PV cells to generate electricity for the common areas of The Presidential Tower.

**HELIPAD** - A helipad meeting the international standards and giving the option for the jet setters to land on the building other than catering to the fire dept regulation for emergency use.



# THE ULTIMATE SETTING FOR SOCIAL GATHERINGS

Capitalizing on its towering height and commanding cityscape view, the Sky Park Roof-Top allows you to entertain your guests in a setting they are unlikely to forget. Direct access from the ground floor entrance lobby gives guests private admission to the terrace without disturbing any of the residents. A high degree of safety has been incorporated into the exclusive design with glass railing that does not compromise the stunning views.





Outdoor furniture and seating in pavilions and marquees, enhanced by mood lighting-add to the exclusivity of your terrace party.



Savor the aroma filled coffee and  
the experience that is a pure delight.













Great view to workout !









High Fliers, Live High !



Starlit Dinners







# LIFE. AS REAL AS FICTION.

It does not get any better than this.  
Lifestyle magazines will talk about it.  
Film stars will envy it.  
The world will be left gaping at it.  
Step aside, James Bond.

Bangalore's highest infinity sky pool  
at 151 metres above sea level is all yours.  
Take a dip. Swim to the edge.  
And survey the city that looks up to you.  
Read in novels. Seen in the movies.  
Yours to live.

Infinity Pool.  
Infinite Pleasures.













# WE HAVE A RESPONSIBILITY. AND IT IS TO SPOIL YOU.

We have literally gone to the ends of the earth to give you everything to live life to the fullest. But we couldn't stop ourselves with just that. We had to supersize it. The sprawling 60,000 sq. ft. Club Grand stands testimony to that. Complete with all the modern lifestyle amenities you can imagine, and then some more. True to its name, it lets you live the Grand Life, in style. After all, if you don't deserve to live it, who does?

## CHOOSE YOUR WAY TO INDULGE!

### Basement Floor

- Squash Court •Billiards Table •Large Gymnasium •Health Club

### Ground Floor

- Conference Room •Convenience store •Cyber Café •Beauty Parlor •Multipurpose Hall

### First Floor

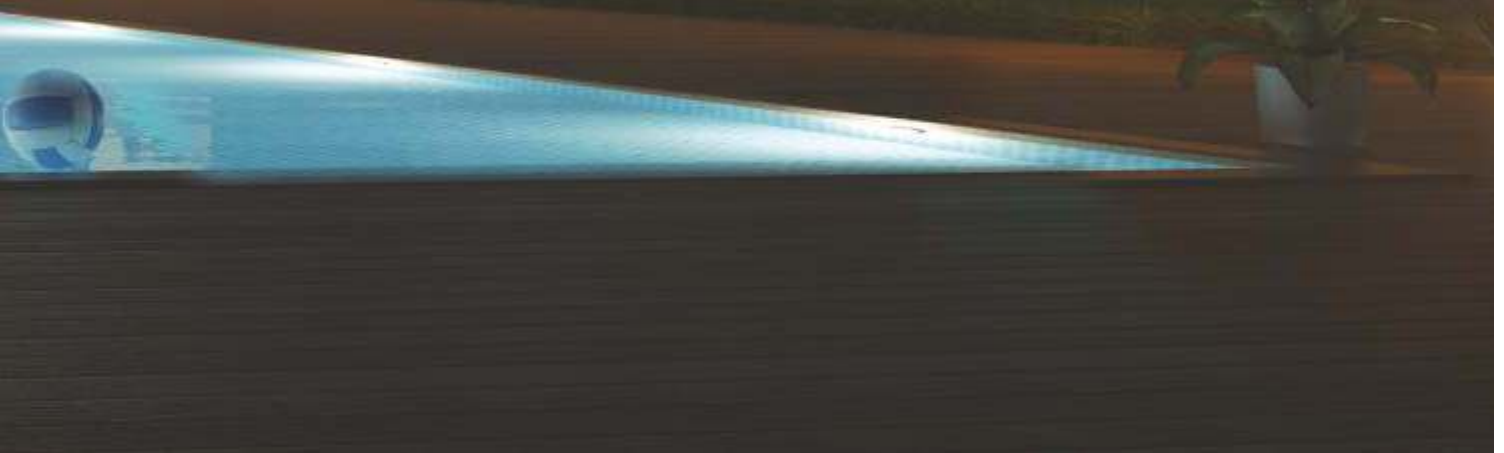
- Restaurant •Table Tennis •Mum's Zone •Kids Zone •Indoor Games
- Cards Room •Reading Room/Library

### Second Floor

- Home Theatre •Badminton •Guest Rooms

### Other Spaces

- Landscaped Terrace •Outdoor Pool



# INFRASTRUCTURE

Drive into the building through a well defined network of many ramps leading you to their respective parking bays. The facility of 3 car parks per unit is a feature that none of the other development in the city can boast about. The wide driveways, easy maneuverability, international safety and signage makes the drive effortless thru the 3 basements.

The unique feature of premeditated sunken landscape courts allows for the natural light to penetrate to the depths of the basements eliminating any perception of a deep and dark sub grade structure. Once parked, the residents access the plush lobbies at the north or the south block, through the respective lift lobbies. The lift lobbies in the 3 basements are worked with the landscape court on one side adding greenery and water elements to these spaces.







**Check out the other superlative features  
that enhance the living comfort!**

- Piped gas system
- Hydro pneumatic pressured water supply system
- High speed elevators that travel 3 m/sec
- Three level basement 1:3 car parking ratio
- Sophisticated fire fighting systems
- Home automation.
- Three levels of security
- Cauvery water supply
- Multiple outdoor sports facilities
- 100% power backup for apartments and all common facilities









# ENJOY LUXURIES, THE RESPONSIBLE WAY!!

## ECO-FRIENDLY LIVING @ THE PRESIDENTIAL TOWER

At PRESIDENTIAL TOWER, we are certain our constant endeavour to be eco-friendly will hold rich future dividends, not only for you but for the planet as well. In addition to green spaces, several modern innovations work in tandem towards a sustainable goal. These include

- Glazed windows to ensure natural light
- Natural fresh air ventilation, by design
- High Solar Reflex Index material on roof to reduce heat
- Recycling for waste reduction and management
- Recycled water used for landscape irrigation and flushing
- Natural rainwater collection to replenish the Ground-water table
- Electric Car Charging Stations
- Rainwater Harvesting System to conserve water
- User-friendly Features and Fixtures for the differently abled
- Efficient irrigation system
- Use of Low Volatile Organic Compound (VOC) paints for healthier indoors.
- Sufficient parking for visitors

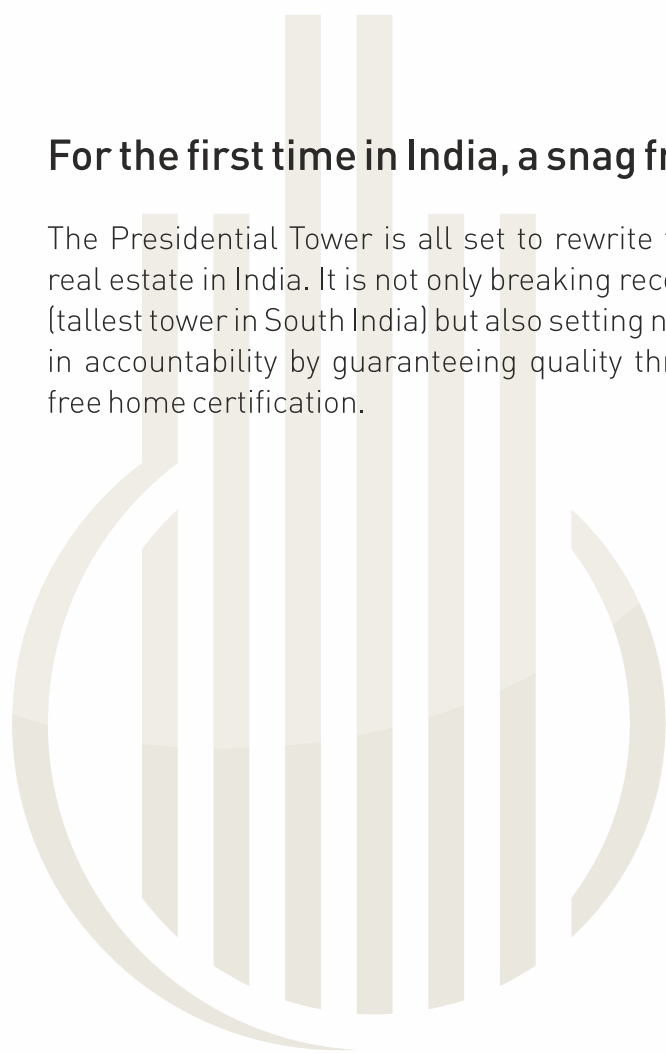
When you are at PRESIDENTIAL TOWER, you are doing your bit in keeping the planet as beautiful for future generations to enjoy.

# QUALITY:

## YOU DON'T HAVE TO TAKE OUR WORD FOR IT.

**For the first time in India, a snag free home.**

The Presidential Tower is all set to rewrite the history of real estate in India. It is not only breaking records in height (tallest tower in South India) but also setting new standards in accountability by guaranteeing quality through a snag free home certification.



# PRESIDENTIAL TOWER







# QUALITY INSPECTION CERTIFICATE

This is to certify that **Colliers** inspected the flat no. \_\_\_\_\_.

In the Building **The Presidential Tower** developed by **Golden Gate Properties Ltd.**, at **Yeshwanthpur, Bangalore.**

**Colliers** confirms that overall quality of work is satisfactory and complies with norms established by **Colliers** for quality snag free Finishes and workmanship Of Residential Unit\*.

Authorised signatory

Dated:

Colliers

# What Customers of Golden Grand have to say

## Harish Somanchi : Golden Grand - MB - 203

"I booked my flat in Golden Grand.. The entire process, right from the booking to registration, has been hassle free thanks to GG's staff. There has been significance progress at the site which includes a beautiful landscape, water body, tennis court etc. The apartments are spacious and very intelligently designed to give a very aesthetic feel inside the home. The project also acquired Cauvery water connection which is very good.

While Maple block was ready for possession long back, both Fern and Alpine blocks are nearing completion. It will be amazing to see a large lively community living a "Grand" Life here very soon. The location is the best of this project thanks to the upcoming Metro and the vicinity to neighboring locations such as Malleshwaram, my personal favorite!! "

## Rathindra Goswamy : Golden Grand - FB - 604

"We are very happy to have our own flat in Golden Grand. This project is truly unique and world class Architects & construction technology & easy connectivity + METRO RAIL STATION. Mainly landscaping with 84% open space and good number of visitor car parking spaces facility.

The best thing about this project is Eco-friendly Homes and a fully loaded Club House. Golden Gate Property's customer care service division is very efficient and good team like M. Krishnamurthy and others. We like to interact with these people and fully convinced. Hope this project will be one of the best modern condominiums in West Bangalore a signature project by Golden Gate Properties Ltd. "

## Miss Mary Hariette : Golden Grand - MC - 704

I, Miss Hariette, occupied the flat on 30th March 2013, as a first occupant. Initially, I was hesitant. In due course, many occupied the flats. "Golden Grand Apartments" is Grand in all the aspects. Here we are very secured and that makes us happy.

The staff are here round the clock waiting to help us with all smiles. When we request the Directors for any sort of help, they solve our problems immediately without any reservation and hesitation as an able officers.

Golden Grand Apartment has 13 acres of land. Only 15% is used for constructions. Remaining 85% is open to sky with all greenery, playing area, walkway, sit outs, beautiful fountains, temple, cricket field, gym, tennis court, etc....

Every Occupant can lead a Happy Healthy and Harmonious Life in Golden Grand Apartments.

Golden Grand Apartment is making us to lead a "Grand" Life here. And we get a "Golden" treatment from all the Directors, Executives, Staff, Security and laborer's. They are with all smiles to help us in need. I feel we are chosen to live here like prince and princess without Crown.

We the residents together Crown our apartment with Gold and Diamond for making us lead a royal life in Golden Grand Apartment's in Yeshwantpur."

## Prem Kumar A : Golden Grand - MA - 503

" I purchased a flat in Golden Grand apartment in March 2013 and since then I am very satisfied with the level of customer services which I have received. My queries are answered on time & appropriately and issues are getting resolved to my satisfaction. The best thing that I like about the place is the location & the landscaping outside. It is at a very prime place, accessible to all important parts of the city and with Metro station also nearby.

There is a lot of space which has been left for landscaping and from the plans that I have seen, they want to develop it in an unique fashion - looking forward to that. It has all modern amenities & will be a great place to live-in once all work is completed. "

## Amith Nag : Golden Grand - FB - 404

"I was one of the first few who booked a flat at Golden Grand, way back in 2006. It has been a very long wait, but I am happy that my flat FB-404 is finally almost ready for occupancy.

I would like to convey my appreciation to the CRM team (Mr. Krishnamurthy and others) who have always interacted with us politely, gave me clear details and updates and listened to our complaints patiently. The CRM team has made it easy for us flat owners. Now that we are nearing the completion of the project, hope this fine relationship continues, and future customers are equally happy. "

## Venkata Raghavendra Nandagiri : Golden Grand - MB - 303

"This Dusshera we have performed house - warming puja for our Apartment MB - 303 at Golden Grand. All through we were assured of the efforts from Golden Gate. We were also certain of the value proposition of the project in terms of:

a) Connectivity to Yeshwantpur Rly station, Metro, Majestic Bus Stand and the Airport.



- b) Proximity to various Malls and hospitals.
- c) Proximity to Kendriya Vidyalaya school, IISC where my children study.
- d) The overall features being provided by Golden Gate like piped - Gas facility, beautiful Landscaping, Cauvery water, etc.

Our dreams have now turned true and we thank Almighty for the Blessings. I would like to acknowledge the sincere and timely efforts from you and your team. Your friendly and at the same time professional approach is appreciated."

**Mr. V. Suresh Kannan & Mrs. Vijaya Suresh Kannan : Golden Grand - AA - 1108**

We have booked flat last March (2013) and they promised us to give by mid next year (2014) which they have fulfilled. We are happy with the progress and wish them success for all the projects upcoming.

**Mr. Girish D. Lalan : Golden Grand - MB - 1401**

I am very happy with Golden Gate CRM Team. They take care of all our concerns at site and office. I am very happy with the project. There is lot of open space, good ambience, very good open amphitheater. My grandson came from Singapore for my 'GruhaPravesh' and he really enjoyed here.

The gardens and landscaping are very beautiful. No project in Bangalore has such open space and greenery.

**Sashikumar M. R : Golden Grand - FA - 801**

"I am recording my appreciation about golden grand project and your endeavoring services. Golden grand project of GGPL was a unique and exclusive project. The execution has not diminished any of its features, like 3 way ventilation, minimum 15 feet separation between condos, unique skin wall provided for control of wind, dust and heat, 60 feet wide roads within the project and minimum of 300 feet distance between towers are unimaginable features of this project which cannot be found in any of the surrounding projects. As per Mr. Krishnamurthy of CRM team, he is a totally committed and client oriented person who has never said a no to any of my questions and resolved all my queries on the spot, this is a token of appreciation from my end for his enduring services."

**Siyaram Maurya & Renu Maurya : Golden Grand - FB 204**

"We feel very proud to own a flat in Golden Grand. Initially we had certain doubts about the completion and other factors, but after seeing "Maple" we are very happy and satisfied. It was worth waiting and investing in this project. The best thing about this project is its landscaping and structure which is so unique. The connectivity to all major areas is so simple and convenient. Their customer care people are very committed and supportive. We never face any problems with the team till date; we would like to extend our best wishes to them. We are looking forward to move in to our dream house as soon as possible."

**Shreesh G : Golden Grand - FB - 1003**

"Firstly I will be very much thankful to you & your team for excellent work done within a very short span of time. I very much appreciate your co-operation in giving us the opportunity of occupying our flat ASAP "

**Mr. S.A. Satish Kumar : Golden Grand - AA - 204**

The amphitheater and water bodies are so serene and calm especially in the evening. You don't feel like moving out from the place.

**Mr. Ankit Jain : Golden Grand - AA - 1003**

Great flats, with good build quality. In a great location and competitively priced.

**Thippaswamy: Golden Grand - FA - 903**

"Very happy to note the progress of Golden Grand in the last 2 years. All the best.

**Jayaprasad: Golden Grand - FA - 401**

"Initial delay in the project, but now moving at a fast pace. Please get the clubhouse ready at the earliest.



# THE TECHNOLOGY BEHIND

The Presidential Tower is a unique structure which has

- No internal beams
- Large clear floor plates

The structure is built using Aluminium formwork to give speedier construction and quality finishing.

## THE TEAM

**L Davies, London** – is the Designer of the Look, Feel and Visual appeal of the Project. The work of Llewellyn Davies-UK is backed by 50+ years of experience in UK and 75 other countries. Recognized universally as a brand leader in master planning and aviation design, the company now benefits from a network of offices in UK, Abu Dhabi and South Africa..



**Lateral Designs and Architectural Services**– is the Principal Architect for the Project. Lateral is an organization created by creative minds and one spirit - to provide the world with gregarious environments. Addressing the ever changing and complex influences of the contemporary requirements , using LATERAL thinking gives us the uniqueness and opportunity to generate contextual and parametric designs.



**Colliers International** – Colliers International will be the PMC consultant for the Project to ensure safe practices, quality focused methodology, proactive risk management. Colliers has expertise and specialization of a large technically qualified team that can manage every stage of a project's life-cycle: Pre-Construction, Construction & Post-Construction. Its multidisciplinary team has wide-ranging expertise in design and engineering disciplines and include Project Management Professional (PMP) certified professionals.



**Chetna Consultants** - The most reputed Structural Engineering Firm with 3 decades of experience from Bangalore.

**Dhruva Landscape Architects** – Established in 1998, Dhruv Associates is a reputed landscape consultancy services firm offering wide range of services to clients' within-real estate industry and outside. Dhruv offers landscape consultancy services from small layouts to large townships for residential, commercial, institutional projects. The Bangalore headquartered firm has local presence in other cities too, including Hyderabad and Chennai.





# 555

5 MILLION SQ.FT.  
COMPLETED.

5 MILLION SQ.FT.  
UNDER CONSTRUCTION.

5 MILLION SQ.FT.  
READY FOR LAUNCH.



**Call: +91 80 2347 3030 / 4299 5555**

**Email: enquiry@thepresidentialtower.com**  
**www.thepresidentialtower.com**

**Golden Gate**

**Golden Gate Properties Ltd.**

Golden Grand, Near Yeshwantpur  
Metro Station, Bangalore - 560022.

Project financed by  
 **JM FINANCIAL**

Member  
 **CREDAI**  
BENGALURU

**Join us:**



<http://www.youtube.com/user/GGPLVideos>



[www.facebook.com/GoldenGatePropertiesLTD](http://www.facebook.com/GoldenGatePropertiesLTD)

**DISCLAIMER:**

The plans, specifications, images (including stock images) and other details herein are only indicative and the Developer reserves the right to change any or all of these in the interest of the development. This printed material does not constitute an offer and/or contract of any type between the Developer and the recipient. Any purchaser of this development shall be governed by the terms and conditions of the Agreement for Sale entered into between the parties and no details mentioned in this printed material shall in any way govern such transactions.