



Make a wish 



Voila...

Yash Elina 

3 & 3.5 BHK Luxurious Apartments
Off Karve Road, Opp. Karishma Soc.



Large, Lavish And Luxurious

Your Dream home in Kothrud!

Nestled in the heart of Kothrud, Punekar's favourite residential destination, Yash Elina exudes luxury and finesse which is unmatched. Here's your chance to upgrade into a lavish apartment without going out to the city's fringes. We have planned and designed Yash Elina keeping in mind the lifestyle of a new age family.

The building elevation is made to blend with the modern city ambience yet emanating a charisma of the classical architecture. Optimum utilisation of horizontal and vertical spaces offers the residents spacious and well-laid out apartments, garden area, recreation avenues and good-sized common areas.

Yash Elina 





Plunge into pleasure



Rejuvenate

Vertical space is smartly utilised at Yash Elina ensuring luxury, rejuvenation and recreation avenues for the residents. Be it the gym & club house on 7th level or the beautiful landscape garden, play area, amphitheatre & plunge pool on the top terrace. You are assured of much pleasure and pride living here!

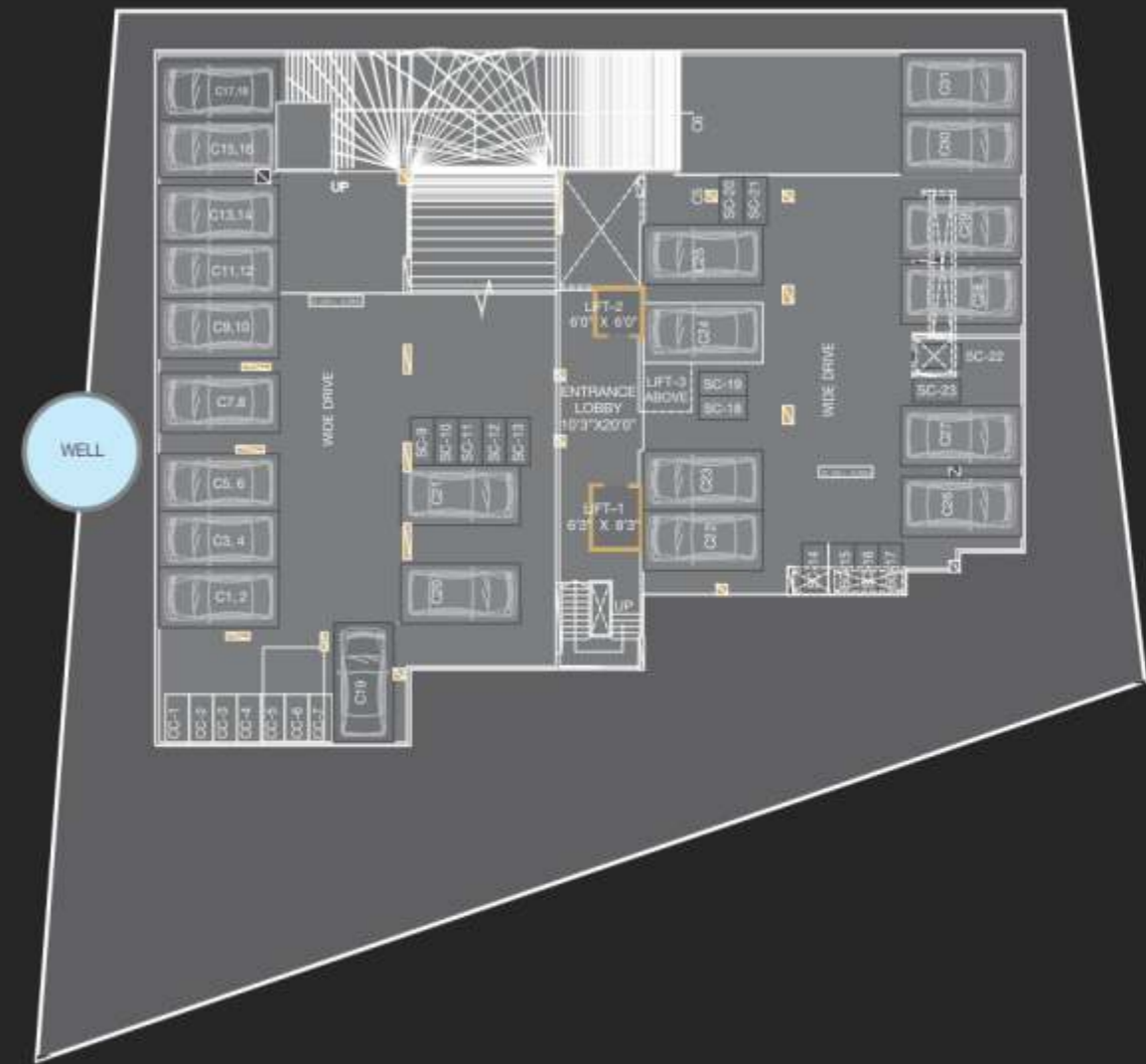
3BHK
Cut Section



3.5BHK
Cut Section



Basement
Floor Plan

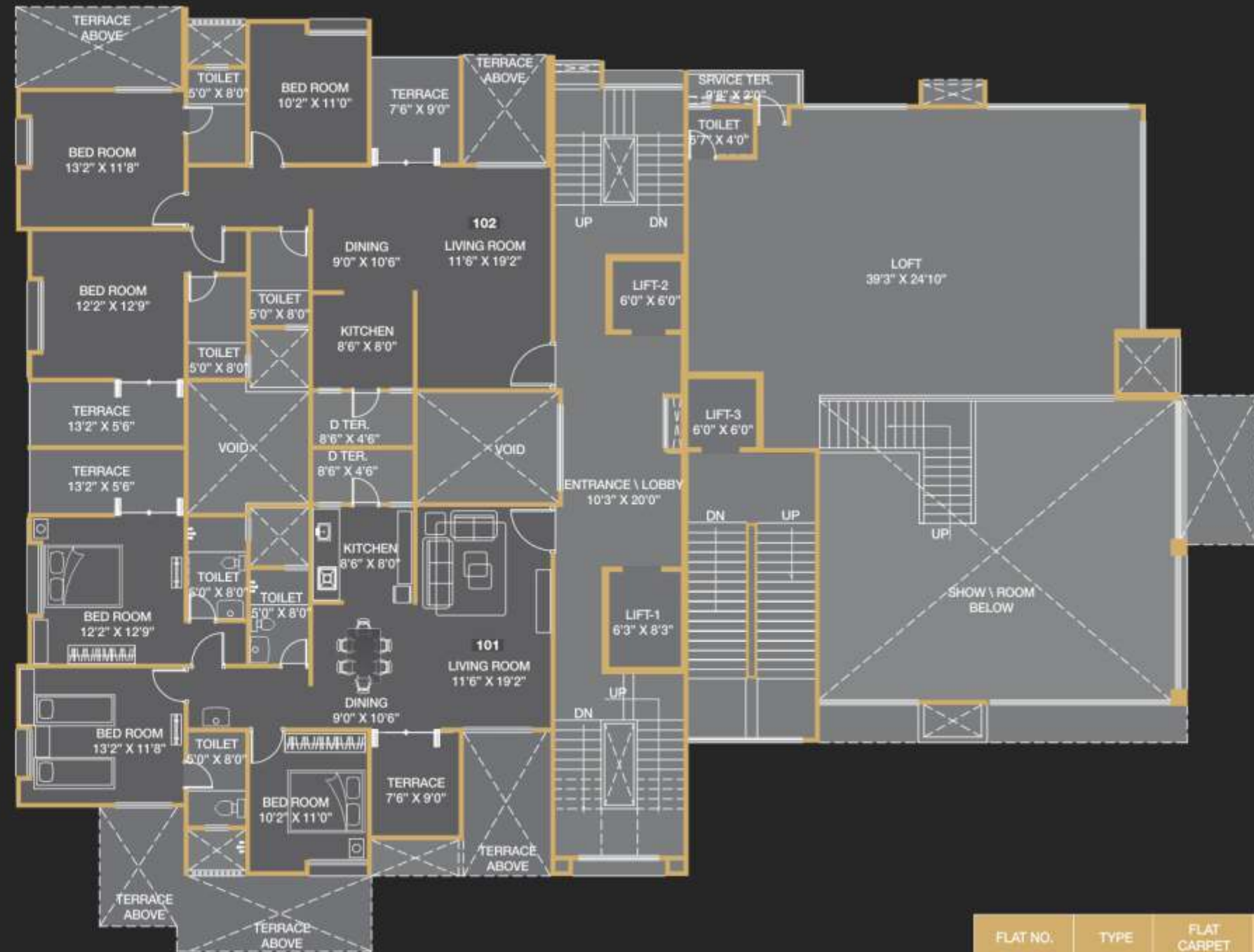


Ground Floor Parking
Floor Plan



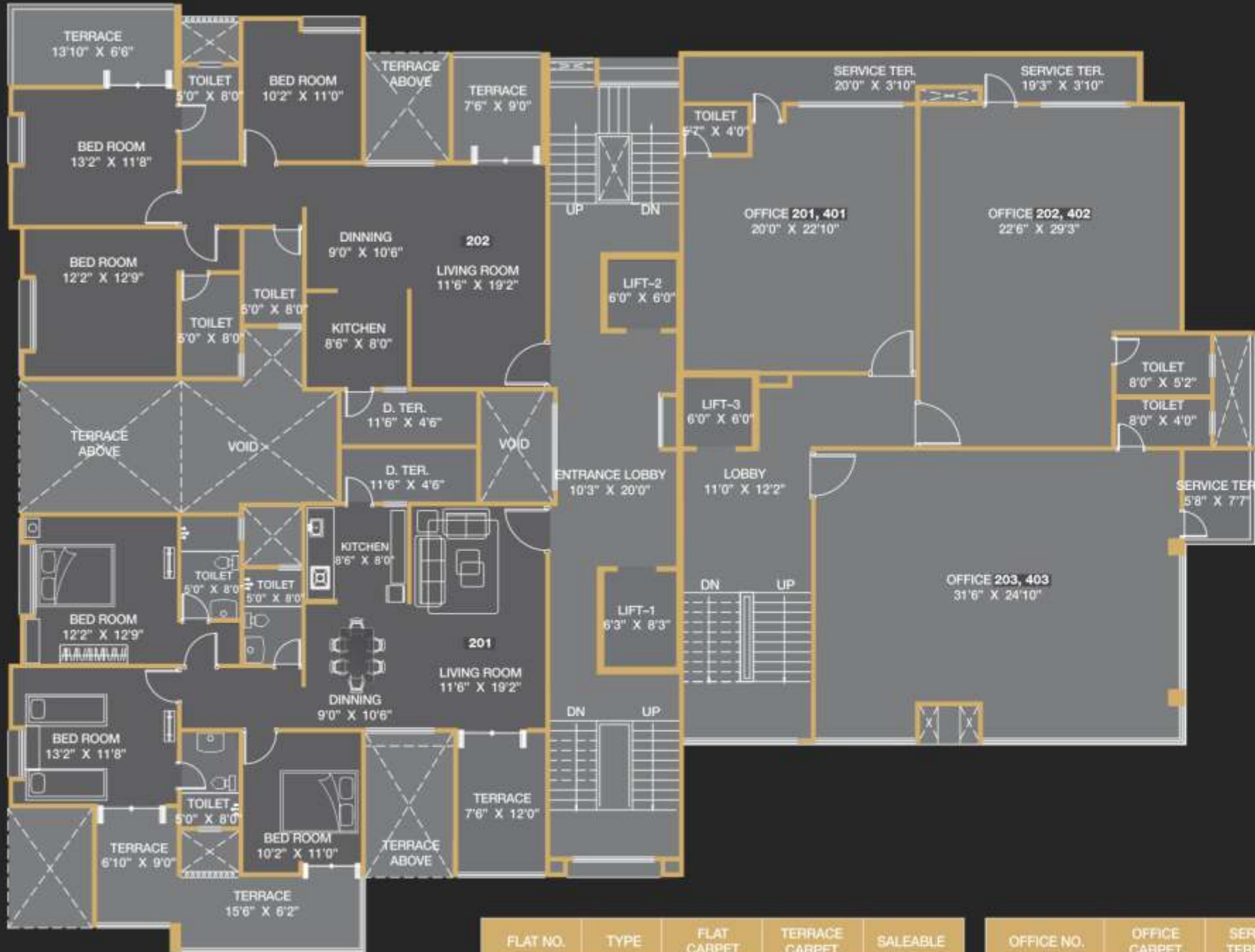
OFFICE NO.	OFFICE CARPET	LOFT	SALEABLE
SHOW RM - 101	1814	907.00	3673.00.00

1st
Floor Plan



FLAT NO.	TYPE	FLAT CARPET	TERRACE CARPET	SALEABLE
101	3BHK	1056.00	178.00	1,604.00
102	3BHK	1056.00	178.00	1,604.00

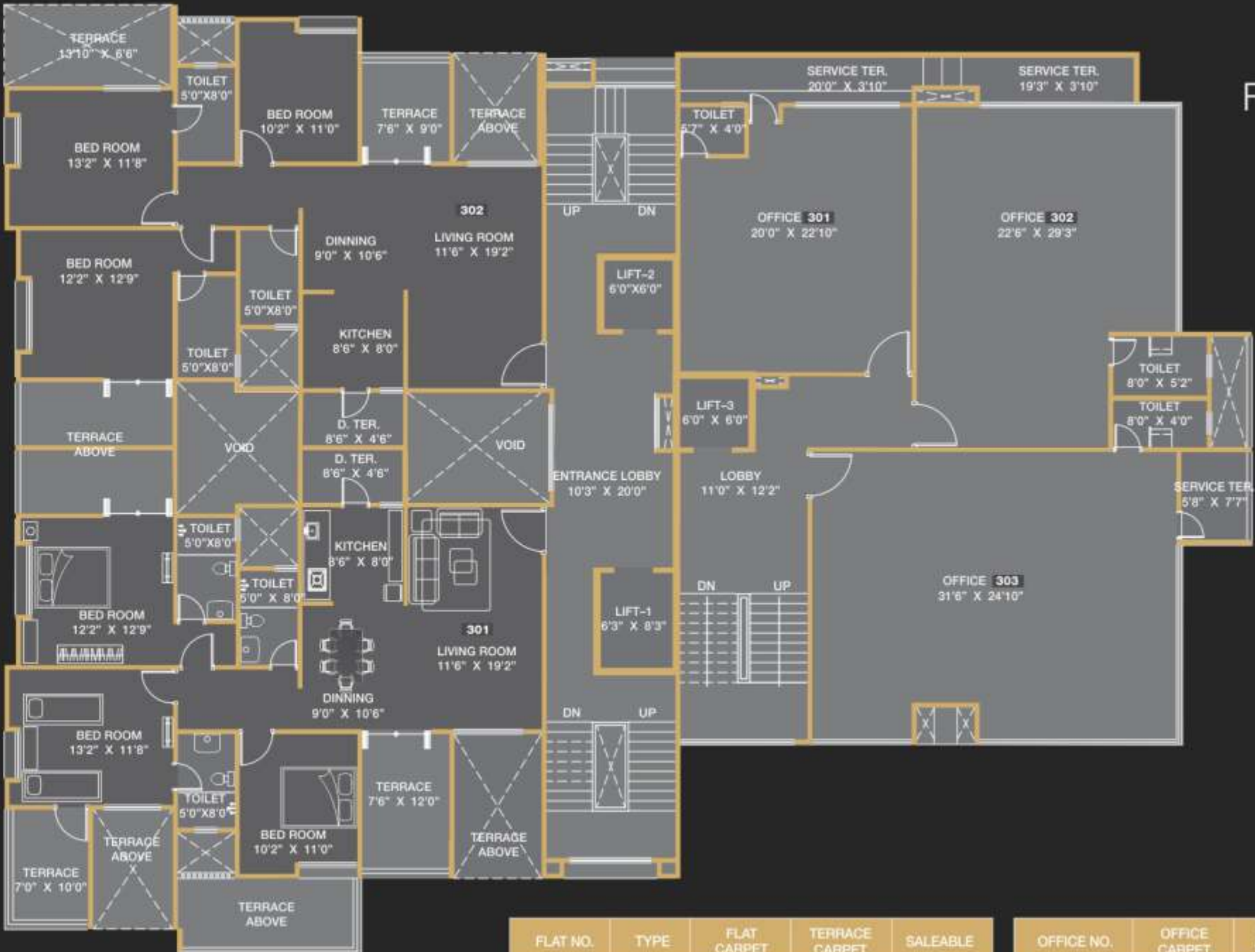
2nd & 4th
Floor Plan



FLAT NO.	TYPE	FLAT CARPET	TERRACE CARPET	SALEABLE
201, 401	3BHK	1058.00	308.00	1,776.00
202, 402	3BHK	1056.00	211.00	1,647.00

OFFICE NO.	OFFICE CARPET	SERVICE TERRACE	SALEABLE
201, 401	457.00	78.00	722.00
202, 402	643.00	65.00	956.00
203, 403	800.00	43.00	1138.00

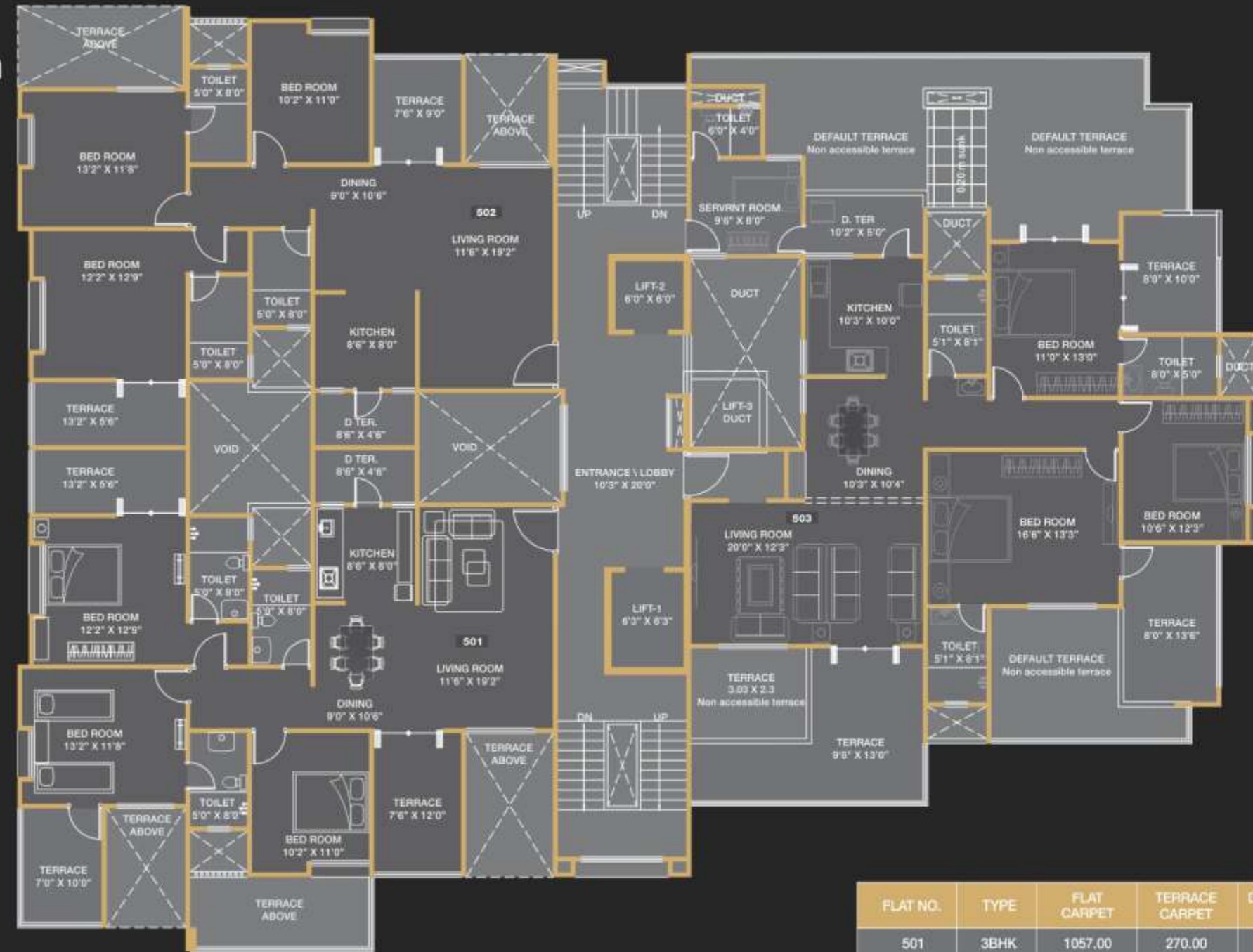
3rd
Floor Plan



FLAT NO.	TYPE	FLAT CARPET	TERRACE CARPET	SALEABLE
301	3BHK	1057.00	270.00	1,725.00
302	3BHK	1056.00	211.00	1,604.00

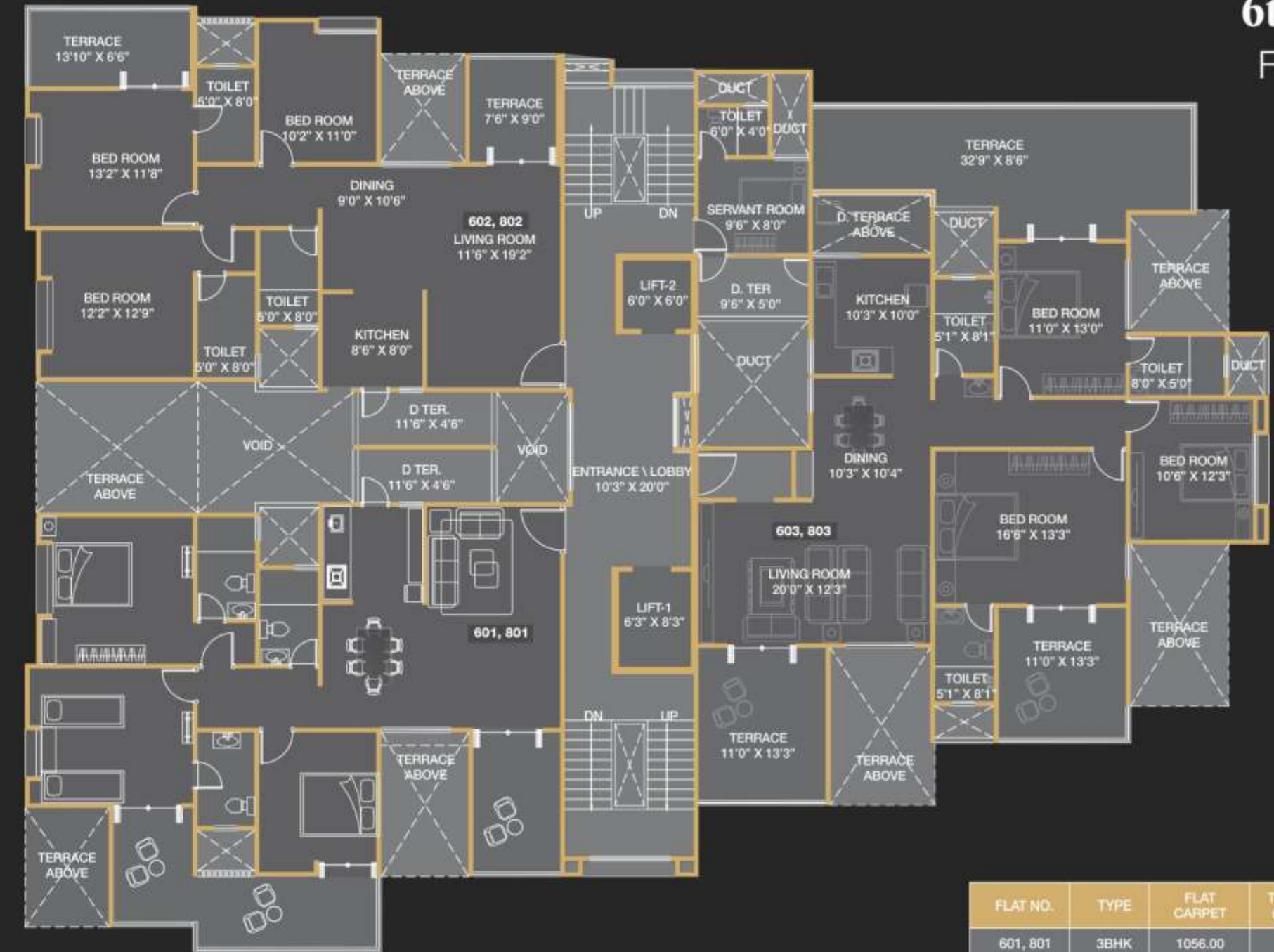
OFFICE NO.	OFFICE CARPET	SERVICE TERRACE	SALEABLE
301	457.00	78.00	722.00
302	643.00	65.00	956.00
303	800.00	43.00	1138.00

5th Floor Plan



FLAT NO.	TYPE	FLAT CARPET	TERRACE CARPET	DEFAULT TER. CARPET	SALEABLE
501	3BHK	1057.00	270.00	-	1,725.00
502	3BHK	1056.00	178.00	-	1,604.00
503	3.5BHK	1310.00	422.00	682.00	3,138.00

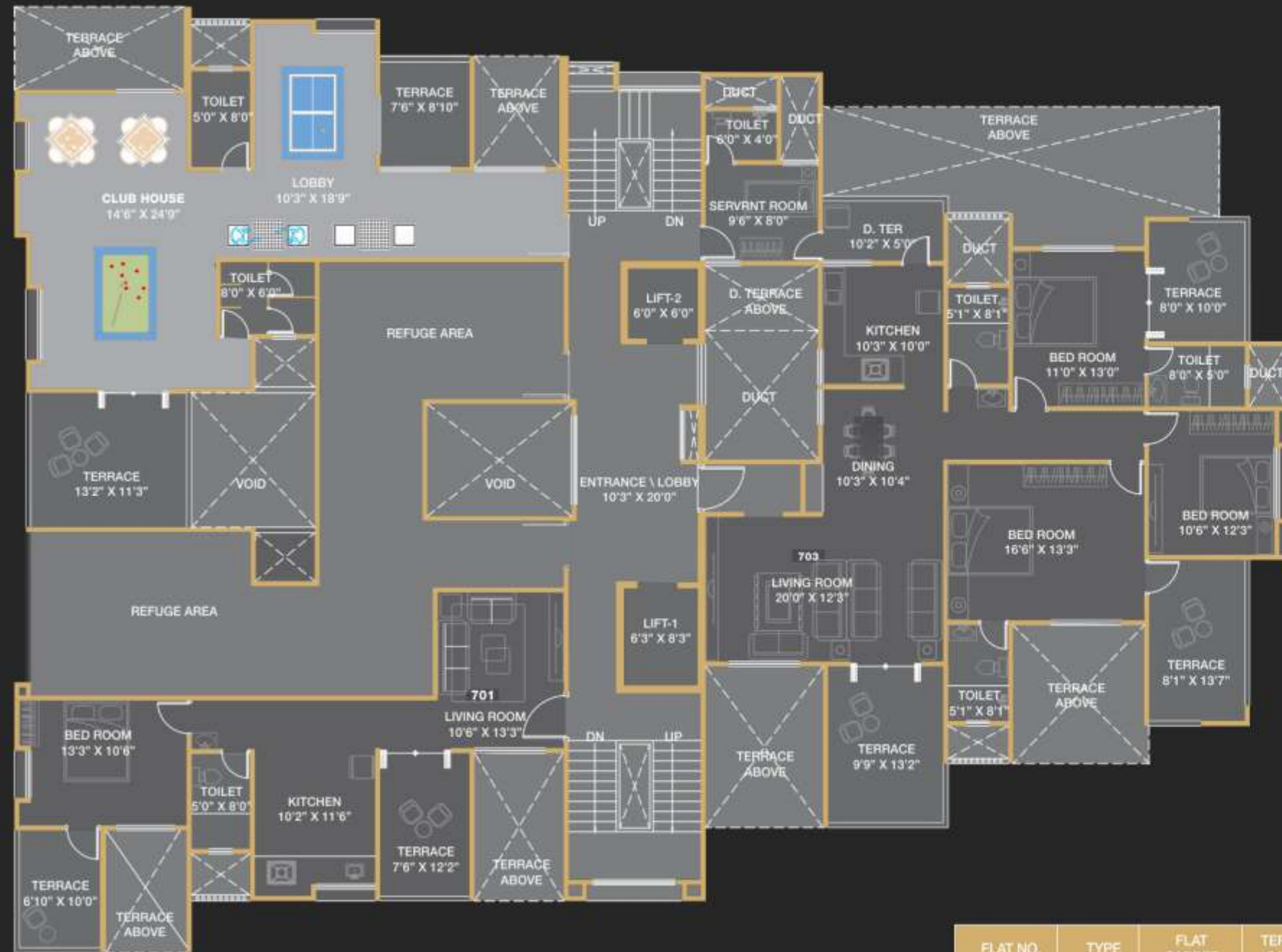
6th & 8th Floor Plan



FLAT NO.	TYPE	FLAT CARPET	TERRACE CARPET	SALEABLE
601, 801	3BHK	1056.00	308.00	1,776.00
602, 802	3BHK	1056.00	211.00	1,647.00
603, 803	3.5BHK	1310.00	616.00	2,504.00

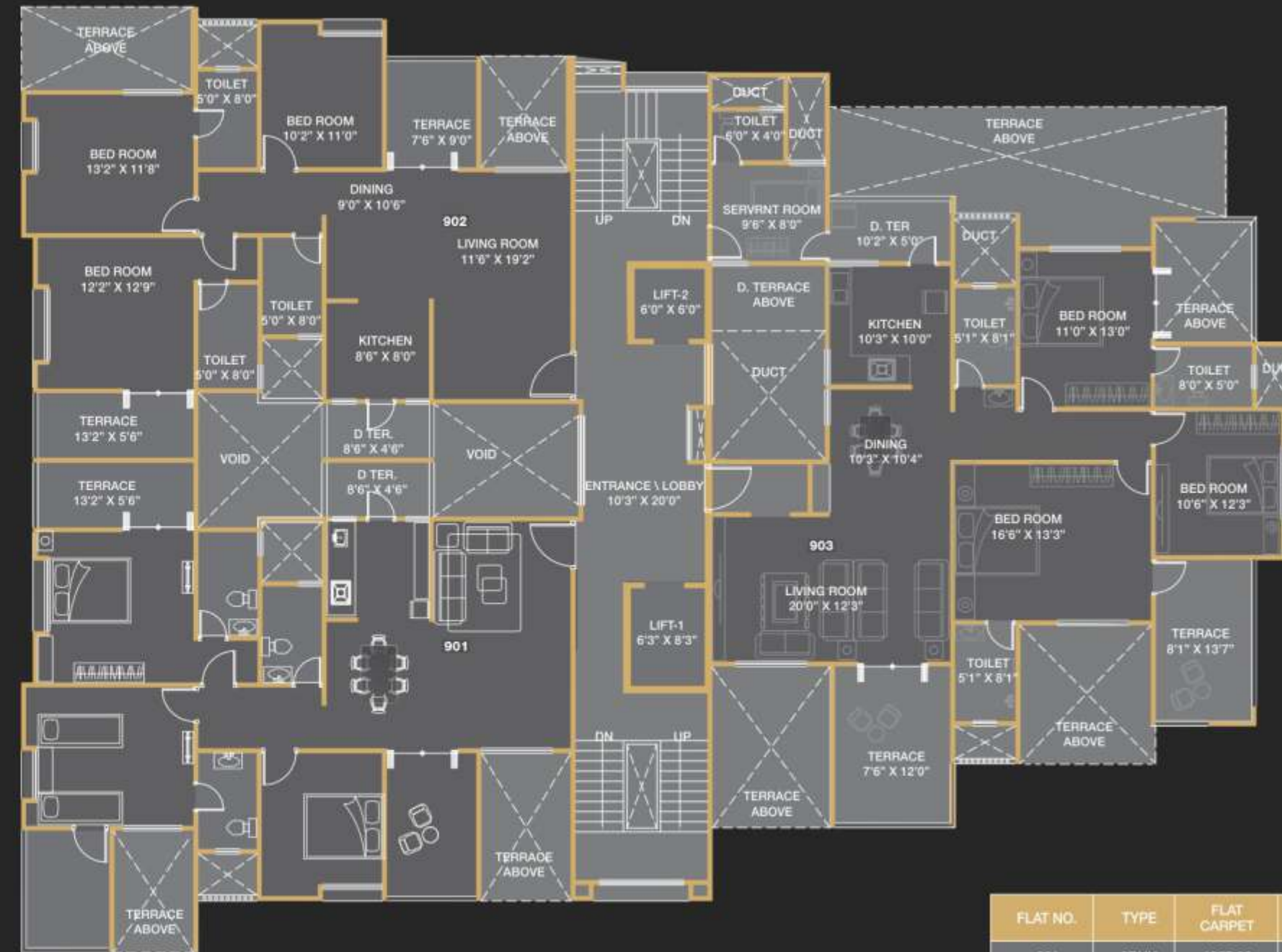


7th Floor Plan



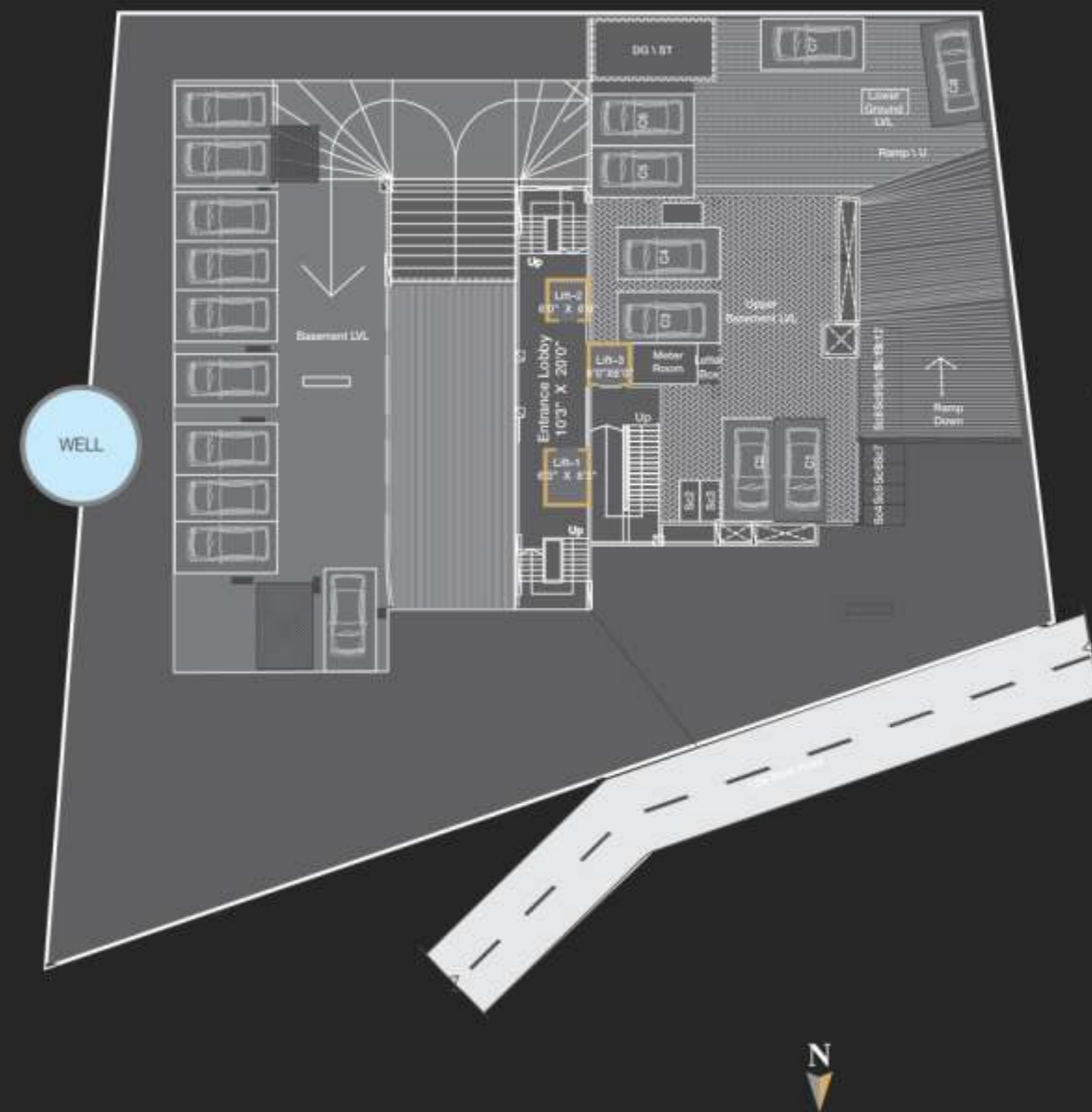
FLAT NO.	TYPE	FLAT CARPET	TERRACE CARPET	SALEABLE
701	1BHK	547.00	158.00	917.00
702	3.5BHK	1309.00	368.00	2,180.00

9th Floor Plan



FLAT NO.	TYPE	FLAT CARPET	TERRACE CARPET	SALEABLE
901	3BHK	1057.00	270.00	1,725.00
902	3BHK	1056.00	178.00	1,604.00
903	3.5BHK	1309.00	368.00	2,180.00

Lower Ground Floor Parking Floor Plan



Terrace Floor Plan



Amenities

GROUND LEVEL

- Elegant plush entrance lobby with exclusive entrance for residents
- Temple for prosperity
- Multilevel mechanized covered car parking
- Premium Quality solar panels
- Sit out with water body for cordial discussions
- Fragrance zone
- PMC compliant fire hydrant system
- Rain water harvesting
- Well illuminated pathways
- Trimix/designer paving block for internal pathway with decorative compound wall

SEVENTH FLOOR

- Yoga centre
- Fully air conditioned Club house and state of art gymnasium

TOP TERRACE

- Tantalizing plunge pool
- Secured children's play area with playing equipments
- Beautiful landscaped party lawn
- Mini Amphitheater



◀ LOCATION MAP

CREDITS

Architect : Jay Aeram

Structural Consultant : Sunil Mutalik & Associates

Legal Advisor : Adv. Uday Kulkarni

Interior Designer : Sanjay Newaskar

MEP Consultant : DM Engineering Consultant

Landscape Designer : Ajay Mehta

Site

"Yash Elina" S. No. 16/7, CTS No. 682, Opp. Karishma Society, Behind Maruti Mandir,
Off Karve Road, Kothrud, Pune - 411 038
Email: info@yashbuilder.com Website: www.yashbuilder.com

Call 9021192192 / 90110 77747 / 49 / 74, 020-2545 8000 / 8300



YASH PROMOTERS AND BUILDERS

Office : 205, 4th Dimension Above Manali Hotel, Mehendale Garage Road, Pune - 411 004



