



aayush

poornima



quality & beyond

Aayush Group is one of Mumbai's upcoming real estate developers, engaged in the construction of Residential apartments and Redevelopment projects around Mumbai and its Suburbs. Our buildings are sheer icons of impeccable infrastructure and impressive elevations matched with thoughtfully designed space. Established in 2010, the company already enjoys credit of several prestigious projects. We pride ourselves to be responsive to the ever-changing environment, fostering innovation and embracing emerging technology.

At Aayush, you are assured of professional & courteous service with high integrity in our dealings. We aim to provide an organized well-thought and value-added experience to our customers.

The Tagline "Quality & Beyond" reflects the company's main motive of creating lifestyle dream homes with high quality standards. We look beyond the obvious, to offer quality homes to our customers that enhance the way people work, live, learn and play. It is our vision to be not just an outstanding construction company but a company committed to transformational development.



Artist's Impression



Aayush Poornima is all about expression. One look at Aayush Poornima and you will feel the harmony at play. It blooms beautifully in the quiet, green neighbourhood of Swastik Park. It shoulders the elite Emerald Club, your new lifestyle club. And yes, we are giving a free family lifetime membership. It connects you to all major freeways and highways in just 5 mins. Visit us and you will see how it feels just right.

A HUB THAT CONNECTS

List the three most important things a property should have, and you're likely to hear: "location, location, location." That phrase has been in use at least since 1926, according to The New York Times, and is just as relevant in 2015 as it was then.

Aayush Poornima is perched in a safe green neighborhood with immediate access to public transit and Freeways. It's a 3 mins drive from Kurla station. Commute by car is a delight with immediate access to the highway and 5 mins drive to the new Chembur freeway. You can get anywhere in a short period of time.

- 50 metres from Eastern Express Highway
- 05 mins drive to Freeway
- 05 mins walk to Monorail
- 05 mins drive to SCLR
- 05 mins drive to Chembur / Kurla Station

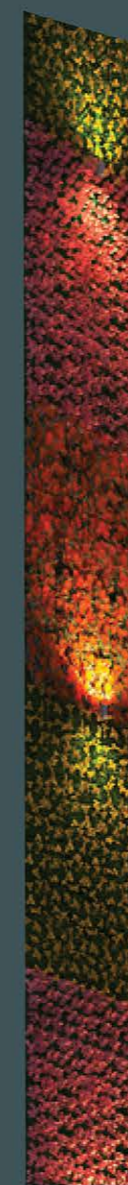




Artist's Impression

VERTICAL FLOWER BED

A 90 feet vertical wall of the prettiest flowers adorn the entire vertical wall, making it one of the most unique landscapes of Chembur. Aayush Poomima is your new beautiful nest.





FREE MEMBERSHIP TO EMERALD CLUB

SPORTS, FITNESS & LEISURE

- Gymnasium 🏋️
- Tennis Court 🎾
- Badminton Court 🏸
- Squash Court 🏸
- Swimming Pool 🏊
- Table Tennis 🏓
- Billiards & Pool Table 🎱
- White Lotus Spa 🛀

WINE & DINE

- Cinnamon - Indian Cuisine Restaurant 🍽️
- Paprika - Multi-Cuisine Restaurant 🍽️
- Adda - Cocktails & Mocktails 🍹
- Nook - Desserts 🍰

BANQUETS

- Imperial Banquet | Galaxy Banquet



3 BHK FLOOR PLAN

VASTU COMPLIANT

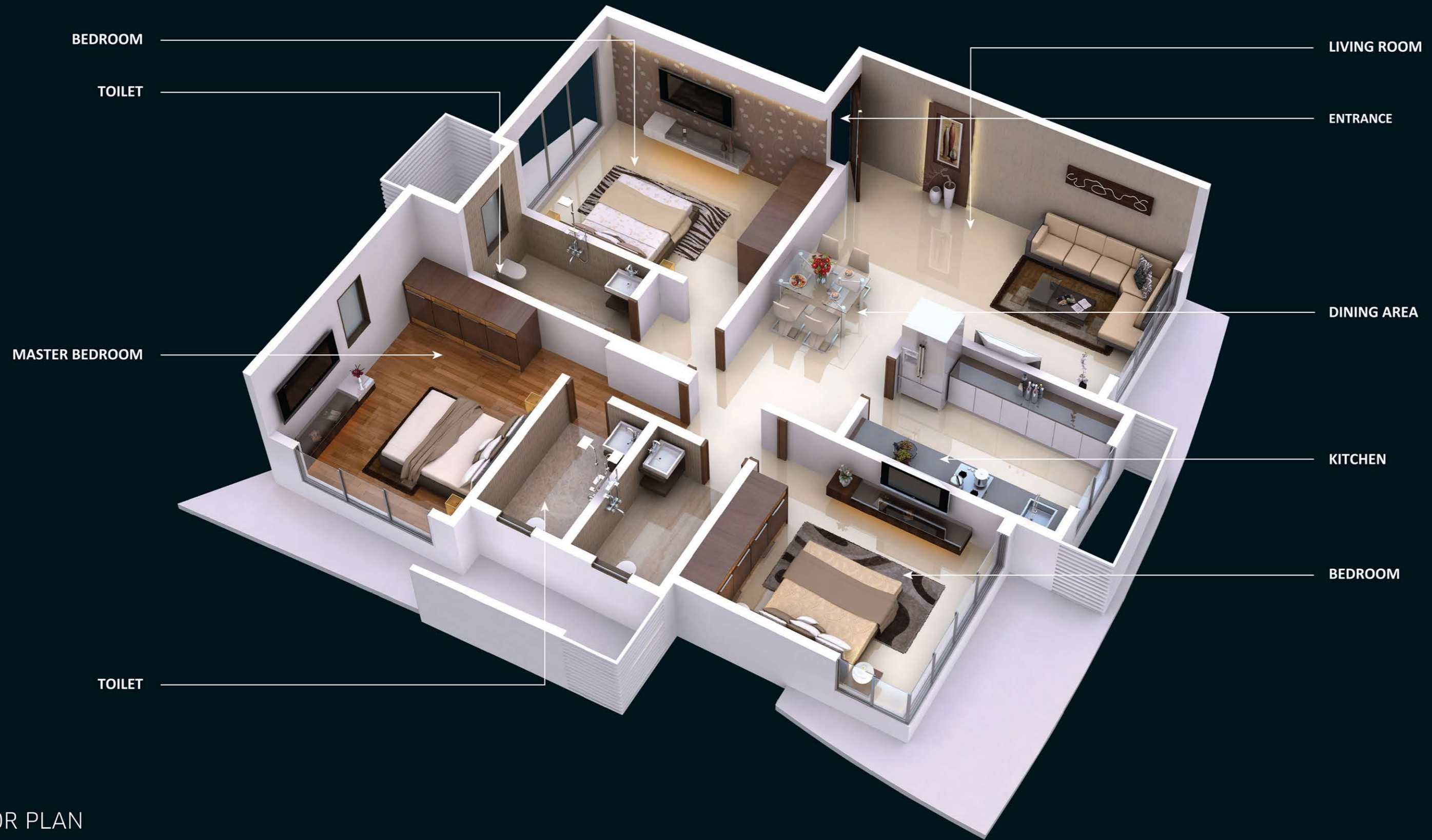
▶ IN



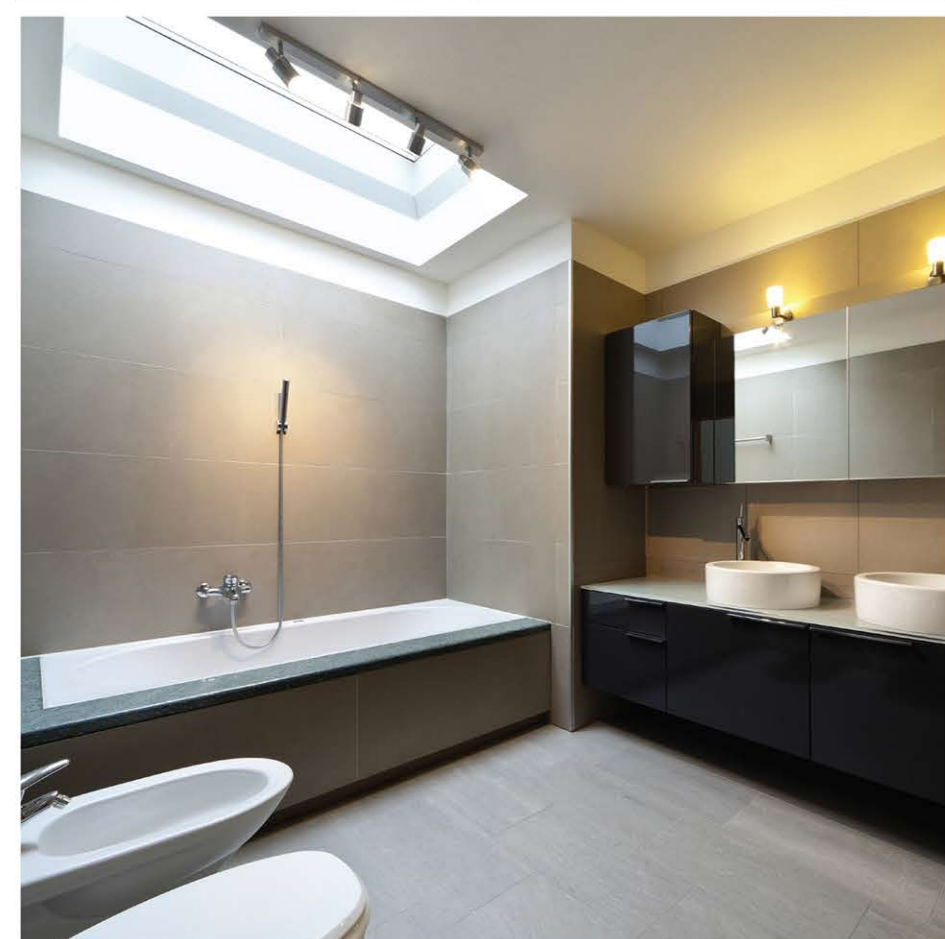
◀ OUT



TYPICAL
FLOOR PLAN
(Not so typical)



3 BHK
ISOMETRIC FLOOR PLAN



APARTMENT FEATURES

- Italian marble in the living room
- Natural lighting & optimum cross-ventilation
- Heavy section anodized aluminum sliding windows
- Wooden flooring in the master bedroom

KITCHEN FEATURES

- Fully modular kitchen with chimney
- Granite platform
- Full height ceramic tiled dado behind the chimney
- Scratch-resistant stainless steel sink with drain board
- Water purifier

BATHROOM FEATURES

- Anti-skid flooring
- Designer tile dado up to door height
- Premium sanitary fixtures & CP fittings of Jaguar / Equivalent make
- Naturally ventilated bathroom

SAFETY & SECURITY FEATURES

- Seismic-resistant structure
- 24 hours CCTV surveillance
- Advanced fire-fighting systems
- Sprinkler system
- Door eye & Biometrics security system

TERRACE GARDEN

VASTU COMPLIANT

NATURE'S LOUNGE

SPIRAL STAIRCASE

SKY TREAD



SKY YOG

SER. TOI.
4'6" x 4'0"

LOBBY

LIFT
6'3" x 7'0"

LIFT
6'3" x 7'0"

ACCUPRESSURE
WALKWAY

SKY GARDEN

UPPER TERRACE

LOWER TERRACE



Sky Garden



MAKING SKY THE BEST PLACE ON EARTH

SKY GARDEN

Be the breeze. Feel the gentle aroma of the flowers.
Unite with the Universe.

NATURE'S LOUNGE

Seat yourself in a space away from hectic schedules,
deadlines and the humdrum of daily life.

SKY TREAD

Come, enjoy Nature's treadmill in the sky. Take a brisk
walk or jog in the heavenly atmosphere of Sky Tread.

SKY YOG

Keep your body and soul in tune with yoga
and meditation. Stay healthy. Stay fresh.

ACUPRESSURE WALKWAY

Let the earthiness of the rounded-stone
paved walkway soothe your body and mind.
Live the feeling of a walk on the clouds.



LOCATION MAP



PROJECT TEAM



Developed By
Aayush Group



Architect
Jayendra Patel

Liasoning Architect
B.H. Wadhwa

Designing Architect
Hemant Talaty

RCC Consultant
Mr. K.H. Motwani

OTHER PROJECTS



"aayush saraswati"



"aayush aastha"



"aayush aangan"



A Project by

aayushTM
GROUP

Site Address: Aayush Poornima, 47, Swastik Park, Chembur, Mumbai - 400071, India.
Corporate Office: Shrikant Chambers, 2nd Floor, A-Wing, 215-218, Adjacent to R.K.Studio, Chembur, Mumbai - 400071.
T: +91-22-252 11 11 5/6 | W: www.aayushdevelopers.com | E: info@aayushgroup.com

The information in this brochure is indicative of the kind of development that is proposed. Subject to the approval of the authorities or in the interest of continuing improvement, the developers reserve the right to change the layout, plans, specifications or features without prior notice or obligation. The details, images, sketches and elevation contained in the leaflets/brochures or any other printed material, are only indicative and artistic imagination may not be exact or accurate, and the same does not form either a basis or part of the offer or contract. The area shown in the plan includes the column offsets and plaster thickness.