



1RK, 1BHK & 2BHK Apartments
with 29+Life Style Amenities, Talaja, PANVEL



Panvel- A Futuristic City

Why Panvel

- Futuristic Development
- Strategic location between Mumbai and Pune
- Infrastructure facilities, Wide roads
- Fast Railway System, Adequate Power Supply
- NMMT & BEST Transport
- State of the art Telecom Network
- Rail Terminal
- JNPT
- International Convention Centre
- MGM Hospital
- Amity University

Business Opportunities

- Infotech, Computer Hardware and Software Companies
- Industrial Establishments
- Logistic Services
- BPO & KPO Services
- Medical Services

Markets

- APMC (Asia's Largest Agri Market)
- Kalamboli Steel & Marble Market

Proposed Infrastructure Projects

- Navi Mumbai International Airport
- Navi Mumbai Rapid Transit System (Metro Rail)
- Sagar Sangam Water Transport Terminal
- NMSEZ
- Bharati Vidyapeeth Multi Speciality Hospital
- Trans Harbour Sea link

Corporate Citizens

Reliance (Dhirubhai Ambani Knowledge City), Siemens, L&T, SAIL, HUL, Great Eastern, RBI, UTI and IDBI. Syntel, Accenture, JP Morgan Chase, Mastek, Datamatics, CMC and many more reputed names.

Panvel: A futuristic city in the making is well connected by road, rail, air & sea and will be the commercial hub and centre of activity in the future. With infrastructure being developed by CIDCO (NAINA which will be larger than Mumbai), Panvel will be the most livable city of the future. Whether it is commerce or education, employment or entertainment, medical facilities or transport you will find it all here in Navi Mumbai which has been graded by National Geographic as the largest and best planned city development in the world.



Let your Dreams Flourish...

C.J.Group is proud to announce its novel offering in Taloja, Panvel- "Kalpavriksha". This novel property will have 1RK, 1 BHK & 2 BHK Apartments giving ample choice to its dwellers with regards to space. The Buildings having stilt + 3 floors are primarily designed to provide you luxury at an affordable price. The project boasts of many conveniences like elevators, gardens, swimming pool, shuttle bus etc. along with state-of-the-art amenities that add luxury to lifestyle.

Plans of Kalpavriksha are already sanctioned. This lovely project consists of 411 flats* spread over 5 acres* in pristine surroundings to give you a feel of returning to a relaxed atmosphere after a hard day at work.



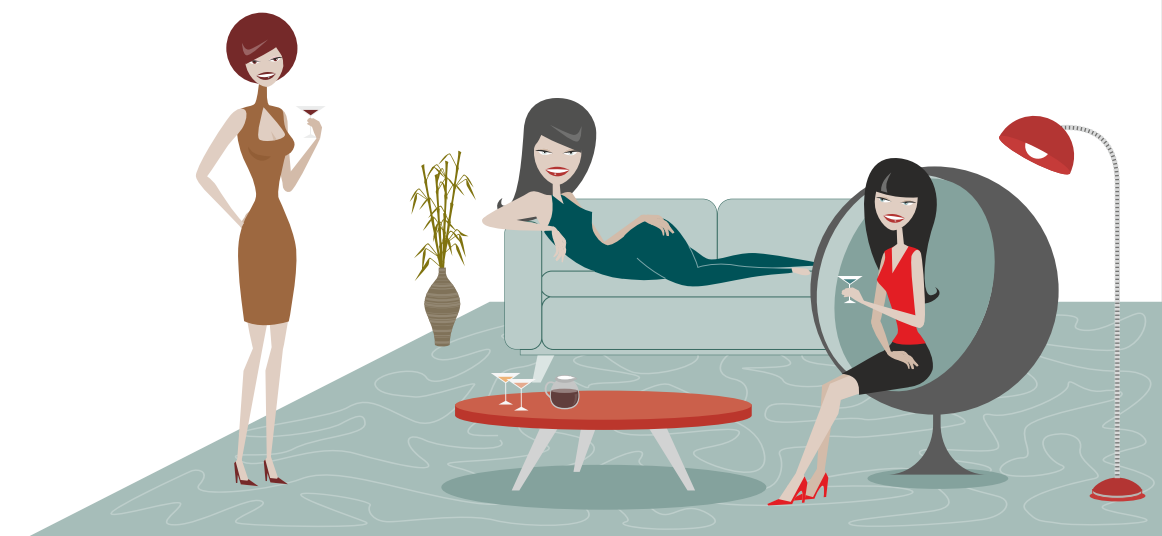
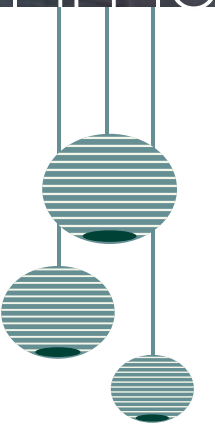


Looks That make you fall in love

The passionate side of life



Kalpavriksha is designed and planned by one of the best Architects and Planners. This Architecturally beautiful project boasts of aesthetics designs that make the elevations of the building a beauty you want to see everyday. Right from the lovely entrance gate to the beautiful swimming pool each and every aspect of Kalpavriksha has been designed to combine beauty with utility. So when you arrive at Kalpavriksha get ready to get enchanted.





Artists Impression

Green is better than Grey 

The greener side of life

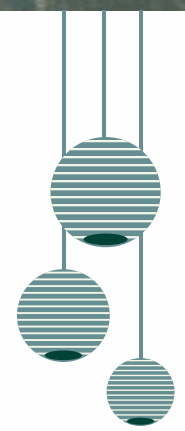


Artists Impression



Artists Impression

We at Kalpavriksha believe that the Green of Nature is way more beautiful than the Grey of Concrete and hence we have given special thought to develop the landscapes and Garden that will bring nature more close to you. So get ready to be welcome every morning with the lovely trees, the beautiful birds and pristine surroundings.



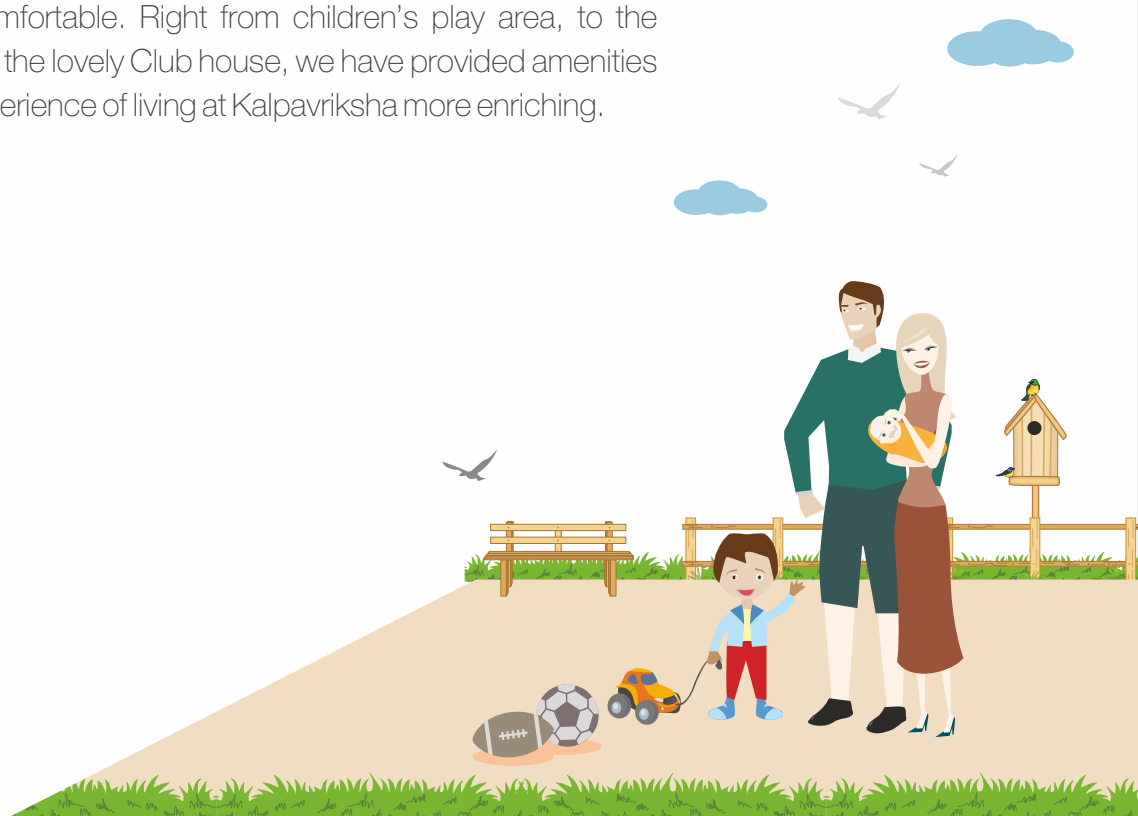


Where beauty meets utility

Comfort & Convenience



We at Kalpavriksha believe that a thoughtful planning is the foundation of beautiful design. At kalpavriksha we have taken special consideration of your needs and provided you with the best of Amenities and specifications that make your lifestyle more comfortable. Right from children's play area, to the nana-nani park or the lovely Club house, we have provided amenities that make the experience of living at Kalpavriksha more enriching.





Life is Here

Connecting you to Life



Artists Impression



Artists Impression

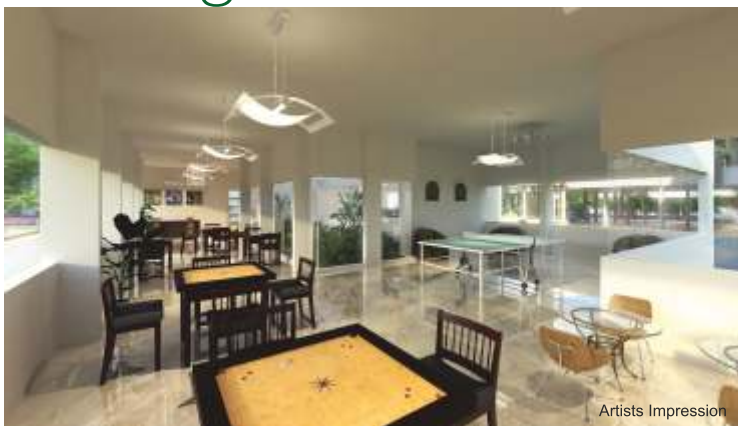
One of the most thoughtful and well planned project of Taloja, Kalpavriksha is sure to be the next happening place. Just 5 mins from proposed metro station, Kalpavriksha also provides great connectivity to Panvel & Khandeshwar railway station and Panvel bus stand which are just few mins away. And to top it all we are providing you with a shuttle bus for your daily needs. With educational institutes, shopping places and Airport in nearby vicinity, Kalpavriksha is surely a place you want to be at.



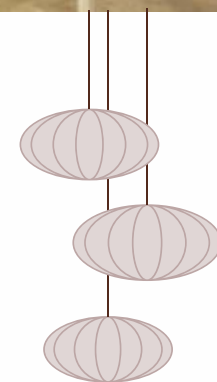


Work hard Play Harder

Thoughtful Amenities



Kalpavriksha has been designed keeping in mind the modern Indian who work hard and play harder. With its lovely external amenities like jogging track, Badminton Court, swimming pool, yoga and meditation court, we have provided a health club and gym where you can work it out or you can always come at the clubhouse and enjoy the lovely indoor games.



Isometric view



1 RK



1 BHK



2 BHK

Specification

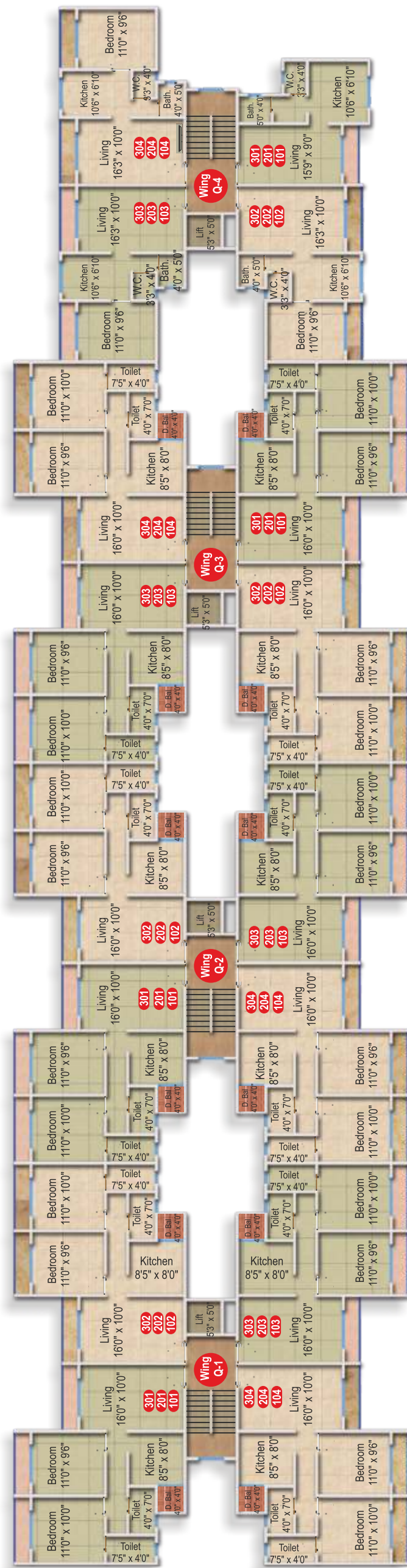
- Vitrified Flooring
- Dado Tiles In The Bathroom
- Granite Kitchen Platform
- Stainless Steel Sink In The Kitchen
- Dado Tiles Above Platform In Kitchen
- Green Marble Window Sill
- Internal Dry Distemper
- External Acrylic Paint
- Concealed Plumbing & Standard Bathroom Fitting With ISI Mark
- Concealed Electrical Wiring And Standard Electrical Fitting With ISI Mark
- Decorative Main Door With Standard Hardware Fittings
- Powder Coated Aluminium Sliding Windows
- 10 feet Clear height Approximately

Project Amenities

1. Designer Entrance Gate
2. Designer Entrance Lobby
3. Elevators in all wings
4. Shuttle Bus
5. Healthscape Gardens
6. Generator Backup for Elevators and Selective Complex Amenities



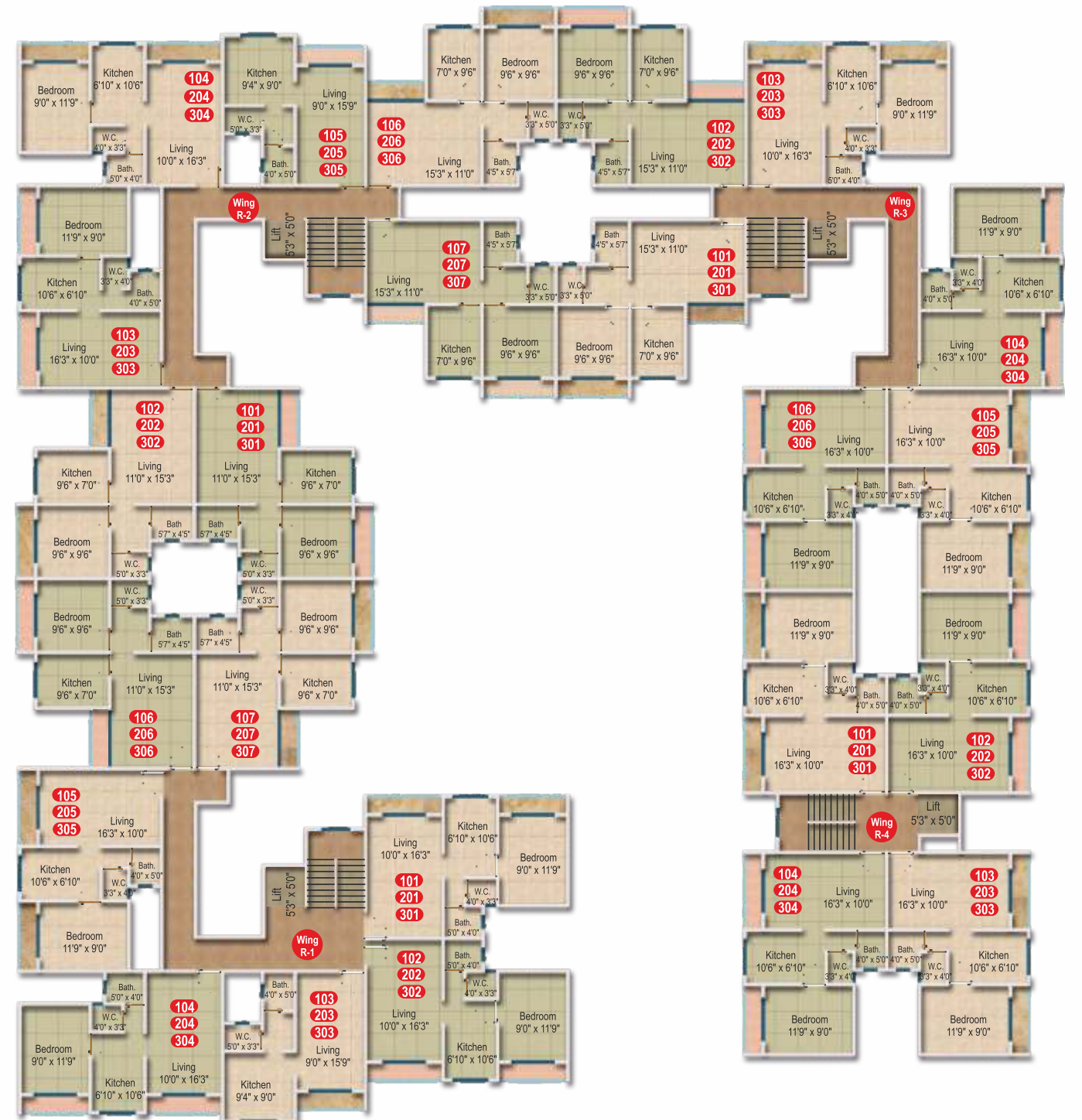
Building 1



TYPICAL FIRST, SECOND & THIRD FLOOR PLAN



Building 2



TYPICAL FIRST, SECOND & THIRD FLOOR PLAN



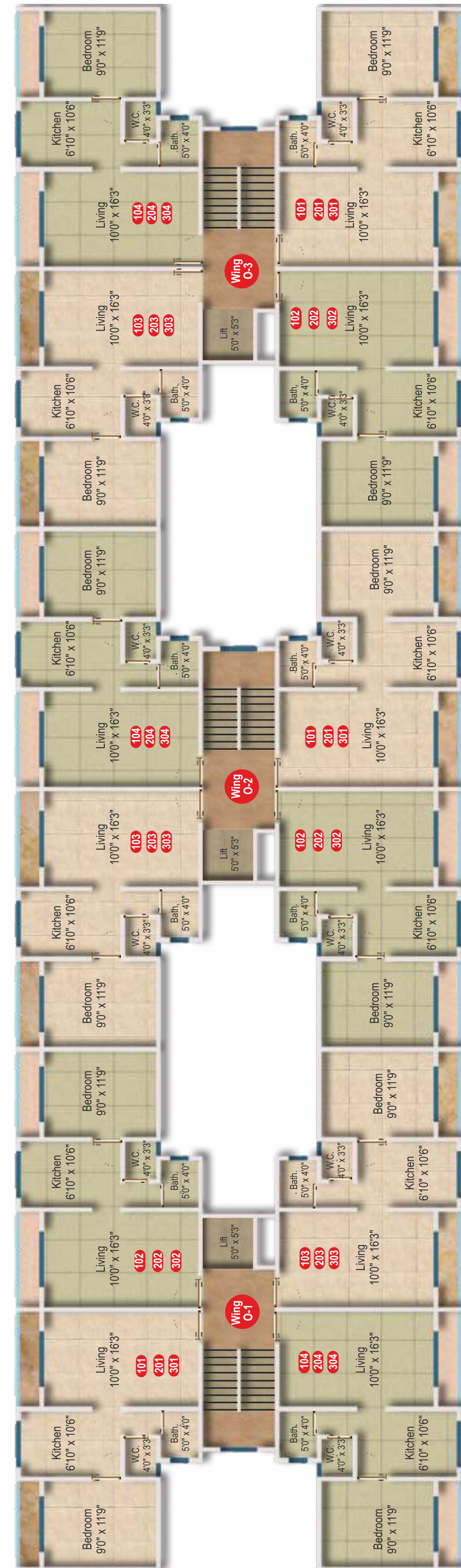
Building 3



TYPICAL FIRST, SECOND & THIRD FLOOR PLAN



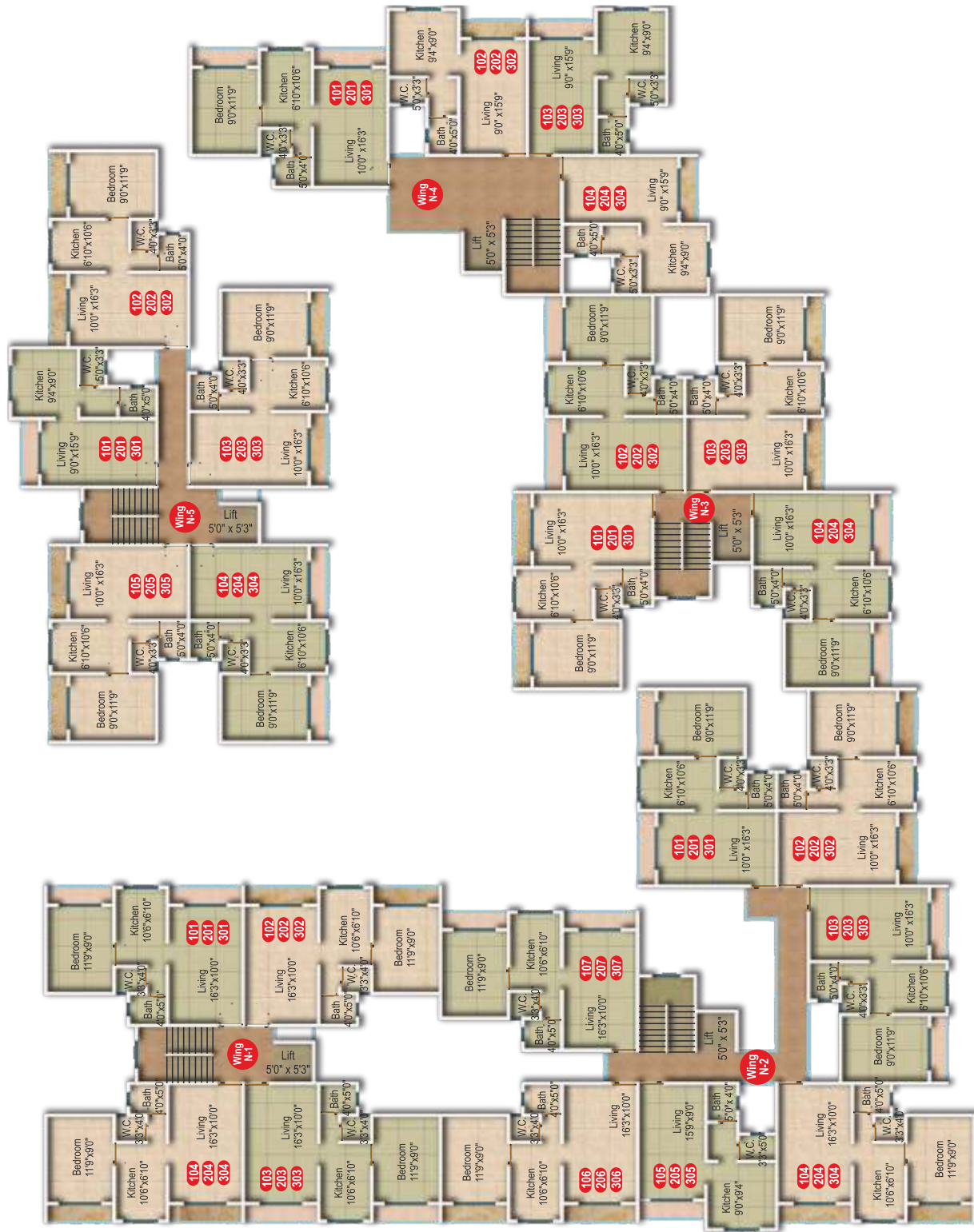
Building 4



TYPICAL FIRST, SECOND & THIRD FLOOR PLAN



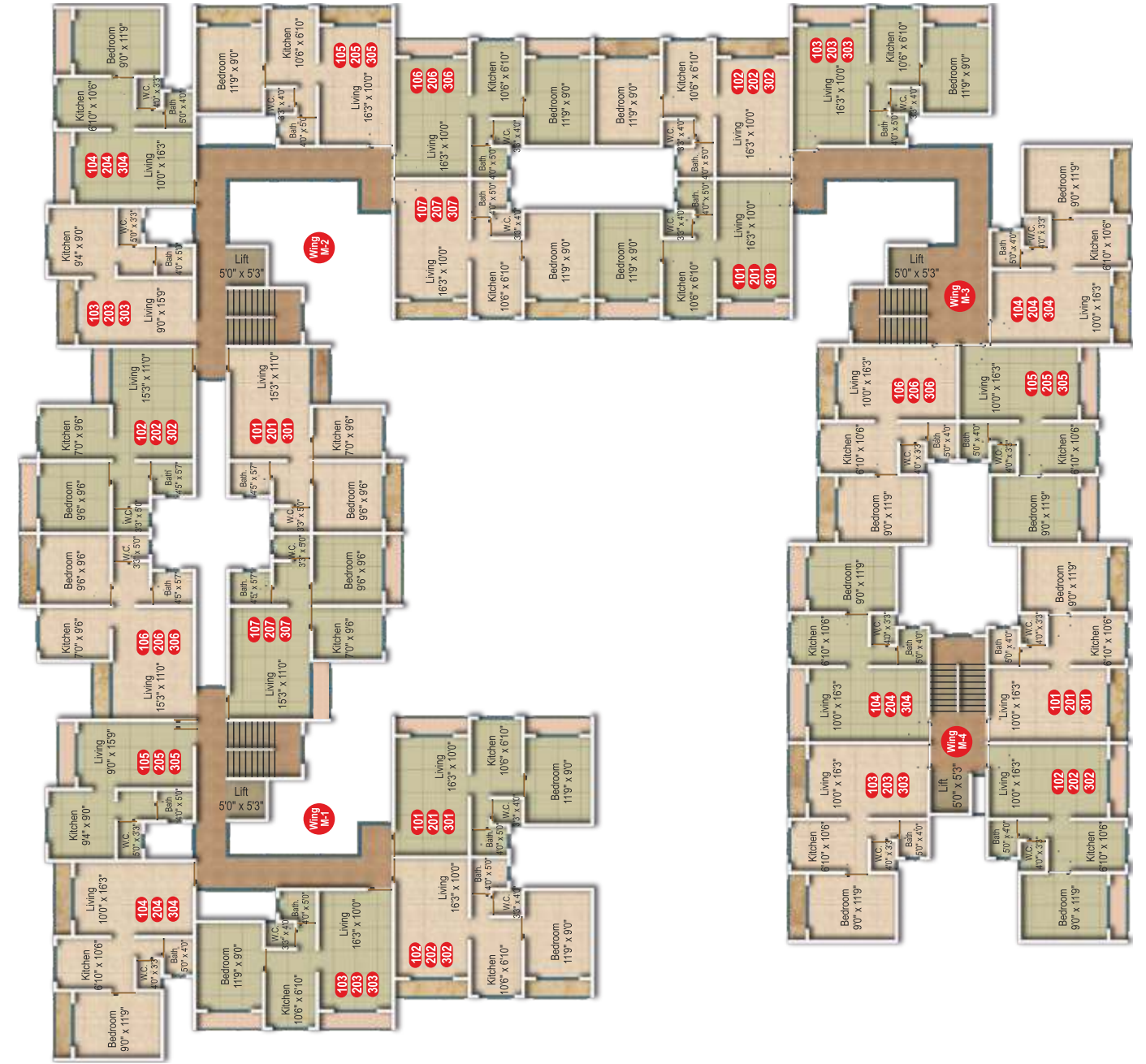
Building 5



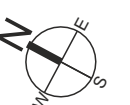
TYPICAL FIRST, SECOND & THIRD FLOOR PLAN



Building 6



TYPICAL FIRST, SECOND & THIRD FLOOR PLAN



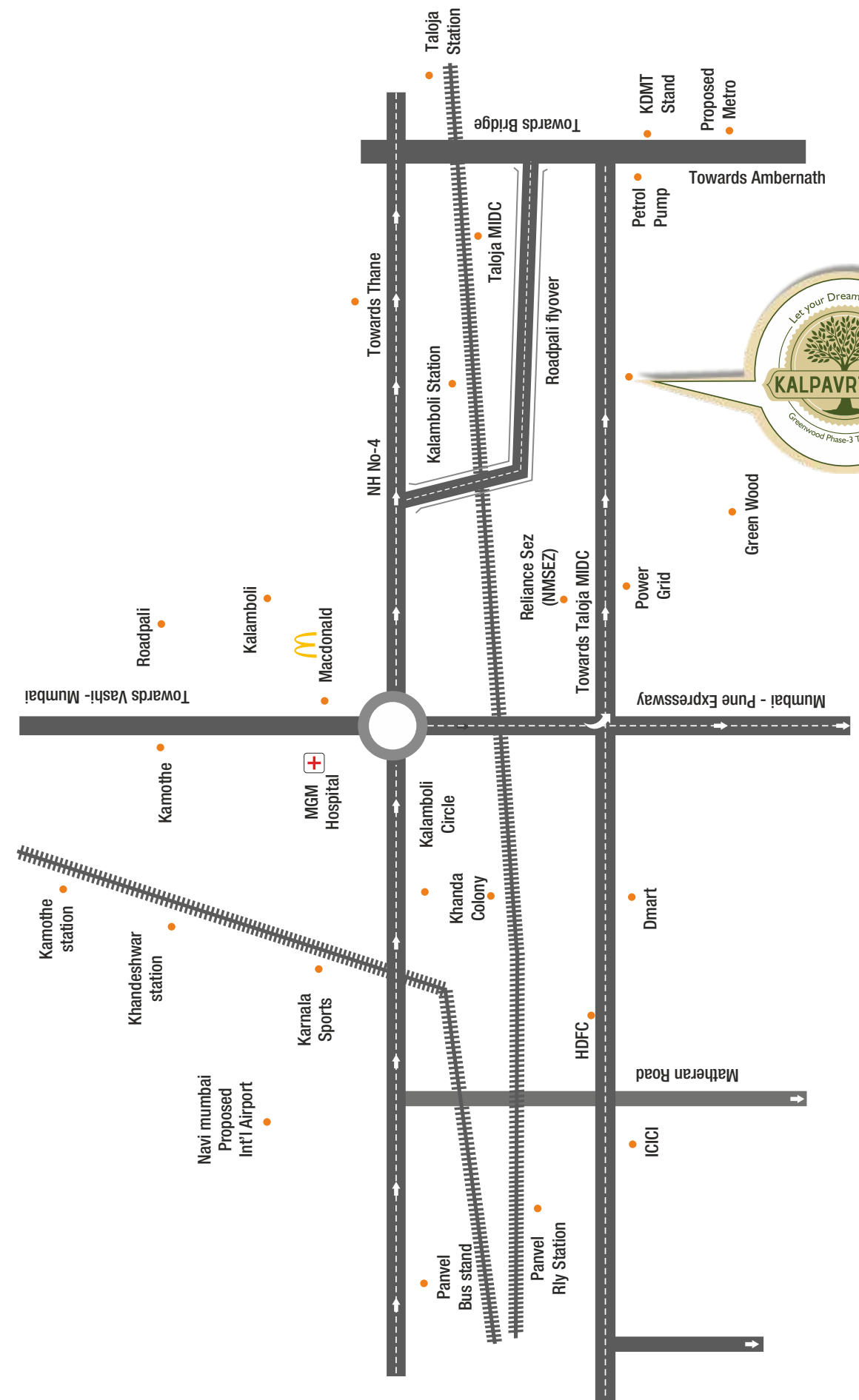
Layout Plan



External amenities:

- 1 Temple court garden
- 11 Yoga and meditation lawn
- 2 Health Club
- 12 Badminton Court
- 3 Indoor games (carom, chess, cards, table tennis)
- 13 Recreational Greens With Bench & Royal Palms
- 4 Gymnasium, Changing room facilities
- 14 Multi Purpose Hall
- 5 Society Office & Meeting Room
- 15 Individual Wing Entrance Lobby Area
- 6 Swimming pool with toddler pool
- 16 Open to Sky Green Space With Seating
- 7 Pool Side Seating
- 17 Oasis
- 8 Amphitheatre
- 18 Teen-Agers Hangout Corner
- 9 Landscaped Contemporary Garden Cum Plaza
- 19 Flower Bed Median with Street Lights
- 10 Children Play Area
- 20 Security Cabin
- 11 Senior Citizen's Park
- 10 Joggers track

Location Map



Distances

Proposed Metro Station	- 5 mins
Taloja Bus Stand	- 5 mins
Parvel Railway Station	- 15 mins
Parvel Bus Stand	- 15 mins
Khandeshwar railway station	- 15 mins
International Airport	-20 mins
D.A.V Public School	- 15 mins
Taloja Railway Station	- 10 mins
MGM Hospital	-15 mins
D-MART	-10 mins





Project by:



Ideating. Creating. Perfecting.
ISO 9001:2008 Certified Company

R.C.C Consultant

**SAMARTH AGARWAL
ADARSHILA CONSULTANTS**

Architect



architecture | landscaping | interiors

Site Address:

Survey No 5/2, 6/2D+3, 6/4, 6/4/1,
6/5, 41/2, 41/3 at village Hedutane,
MDR#6, Taloja, Taluka - Panvel,
Dist Raigad.

info@cjgroup.co.in | www.kalpavriksha.co

Corporate Office:

Acropolis Landmarks LLP
Bhoomi Landmark, 109, 1st Floor, Khanda Colony,
Plot No- 34/34A, Sector-17, New Panvel- 410206.
Ph. 022-2749 2008/9,

For Details : SMS "KALPA" to 56161