

PIONIER

# Lake Dew

RESIDENCY

FIND NATURE IN THE HEART OF THE CITY



INITIATING PHASE 2, THE NEXT STEP  
IN PIONIER'S EVOLUTION.

PREMIUM VILLA PLOTS THAT EXCEED EXCELLENCE



ACTUAL SHOT AT LOCATION



A large, mature tree with a thick trunk and dense green foliage dominates the left side of the frame. Its branches spread out over a paved area. In the background, a white gate with a small guardhouse is visible, flanked by red pillars. A sign on the right side of the gate reads "PIONIER Lake Dew RESIDENCY". The sky is clear and blue.

## THE NEXT PHASE OF SUCCESSFUL DEVELOPMENT

With the exceptional success of its first phase, Pioneer Lake Dew has now aimed to set its sights higher, regarding its property development plans in Bangalore. The promise of Phase 2 is to continue to grow on the promise of our success and continue to provide homes that try and illuminate the best, most progressive aspects of urban living.

Phase 2, pre-launching with 120 different plots, offers expertly planned townships that offer both great living and bountiful investment potential for people all over. Phase 2's ambition involves building on the first phase, which doubled its appreciation since its launch and provides even more lucrative opportunities for investment.

Approved by the BDA, Pioneer Lake Dew breathes rarified air amongst its' peers.

ACTUAL SHOT AT LOCATION



An aerial photograph of a swimming pool area. On the left, a large blue patio umbrella is partially open. Three people are relaxing on dark brown lounge chairs arranged in a row. The first person, a woman in a red dress, is lying down. The second person, a man in a white tank top and sunglasses, is sitting up and holding a drink. The third person, a woman in a striped dress and sunglasses, is lying down. Small black tables with drinks and towels are placed between the chairs. The pool deck is made of light-colored wooden planks. To the right of the deck is a swimming pool with blue mosaic tiles. An orange inflatable ring floats in the pool. In the background, there is a small planter box with green plants and a tree. The overall scene is bright and sunny.

## PROVIDING IDEAL LIVING SPACES

Lake Dew's emergent gated community will provide dream living spaces for homeowners by facilitating a nurturing environment that encourages communality, harmony, togetherness and comes equipped with top notch modern facilities to make your life as convenient as possible.

ACTUAL SHOT AT LOCATION





FULLY FEATURED  
CLUBHOUSE

**Vibe**  
Rejuvenate Yourself

VIBE is our state-of-the-art clubhouse that ensures Lake Dew residents are spoiled for choice when it comes to recreation, health and lifestyle.

ACTUAL SHOT AT LOCATION





Billiards Room



Multipurpose Gym



Yoga/Meditation



Restaurants (Dining)



Mini-home Theatre



Swimming Pool



Indoor Badminton Court



Kid's play area (Indoor)



Table Tennis



Tennis Court



Skating Rings



Open-air Amphitheatre



Basket Ball Court



Functional Training



Indoor Squash Court



Fishing Ponds



Office Room



Guests Rooms



Children's Pool



Steam Room



Barbeque Pavilion & Party Hall

# STATE-OF-THE-ART AMENITIES

- Lake Dew offers high-end, world class amenities that ensure all-round high quality of life and convenience for all our homeowners at all times:
- 24 hour security with a 12 ft. compound wall
  - Individual water connection with overhead tank
  - Underground electricity connection
  - Water drain with closed drain slabs and pavers
  - Tree-lined avenues
  - Asphalted roads
  - Lawn with landscaped parks
  - Rainwater harvesting for parks
  - Sewage system with sewage treatment plant
  - Floodlit synthetic tennis and basketball court

ACTUAL SHOTS OF AMENITIES





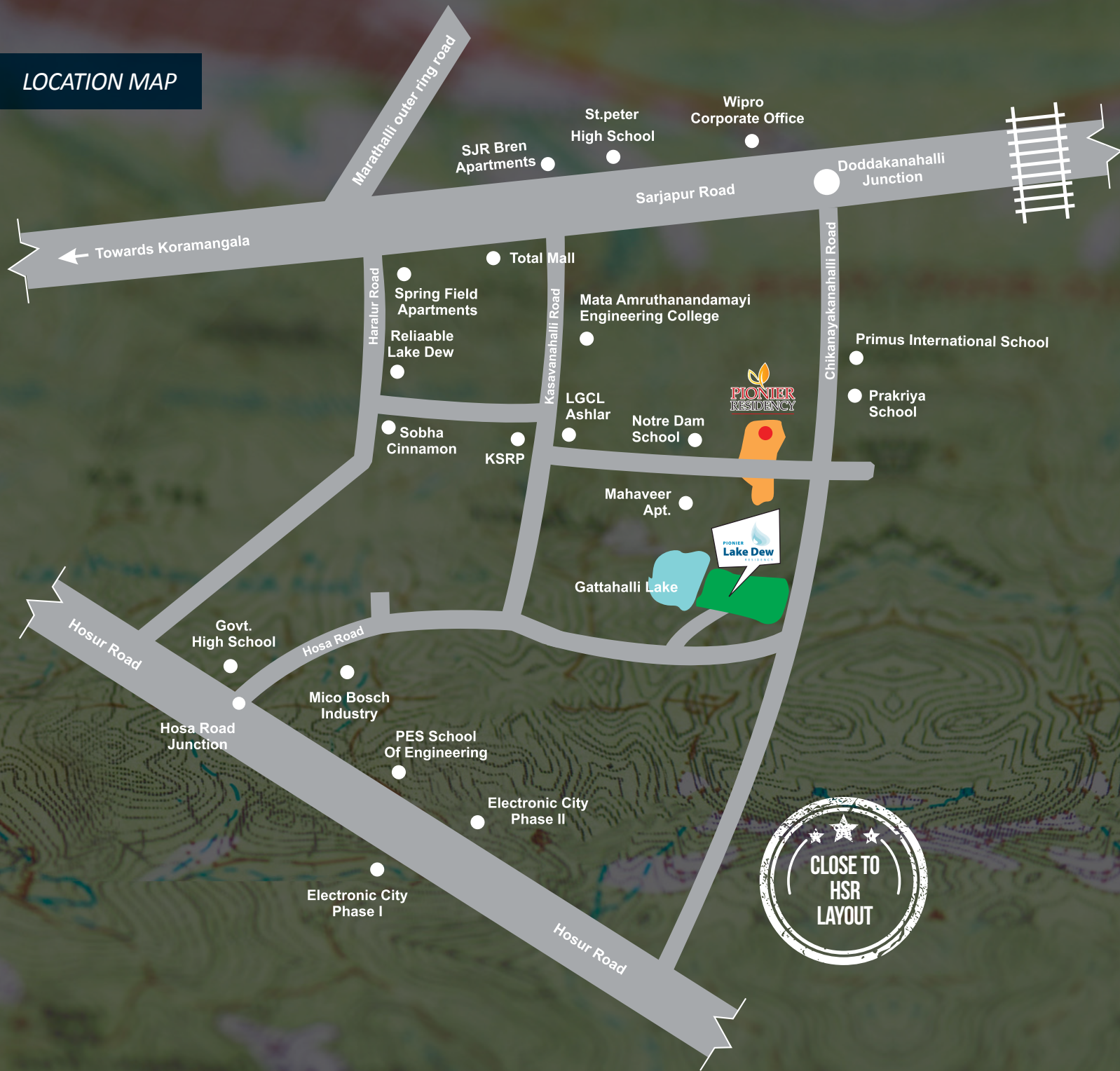
## MAXIMIZE OPPORTUNITY

*LIMITED BOOKING AVAILABLE.*  
Book as early as possible to avail the best Lake Dew  
has to offer and secure your dream home.

ACTUAL SHOTS AT LOCATION



LOCATION MAP



PROJECT  
ACCESSIBILITY

*THE PROPERTY IS IN CLOSE PROXIMITY TO THE PRIME LOCATIONS OF THE CITY.*

- HSR Layout - 15 mins
- Sarjapur Road - 8 mins
- Hosur Road - 10 mins
- Electronic City Phase II - 15 mins
- BIT - 5 mins
- Decathlon - 10 mins
- Wipro Corporate Office - 12 mins
- Total Mall - 15 mins
- Harvest International School - 10 mins
- Primus International School - 5 mins
- Prakriya School - 3 mins
- Narayana Hrudayalaya - 20 mins
- Sakra Hospital - 20 mins
- Apollo Hospital - 20 mins
- Iblur Junction (ORR) - 15 mins
- Amruthamayi Engineering College - 15 mins





Call: +91 8880 317 317 | [info@pionierdevelopers.com](mailto:info@pionierdevelopers.com)  
[www.pionierdevelopers.com](http://www.pionierdevelopers.com)

#48, 2<sup>nd</sup> Floor, I-Star Building, 100 ft. Ring Road, 4<sup>th</sup> Block Koramangala, Bangalore - 560 034