



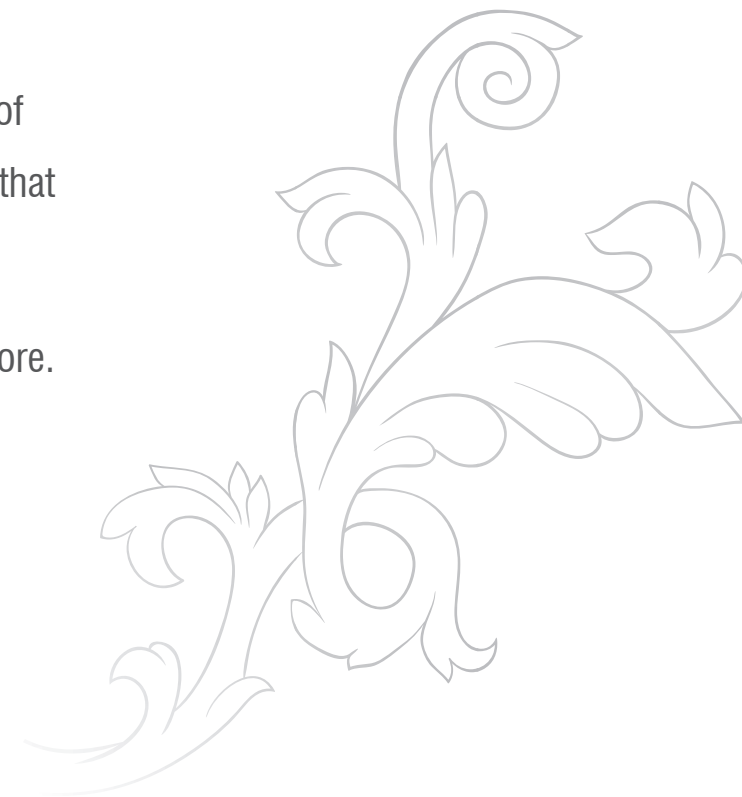


Quiet, idyllic, old-worldly...and yet blending seamlessly with the pace and glamour of the silicon city. Such a home is what Prestige Spencer Heights promises you.

Located on Spencer Road at Frazer Town, part of Bangalore's erstwhile Cantonment, Prestige Spencer Heights presents an enviable place to stay. An eminently accessible and much sought after location, exquisitely planned and crafted dwellings, and all the amenities that your lifestyle demands.

With spacious three bedroom luxury homes in a single tower of eighteen stories, Prestige Spencer Heights presents an address that will be coveted by all and owned only by a privileged few.

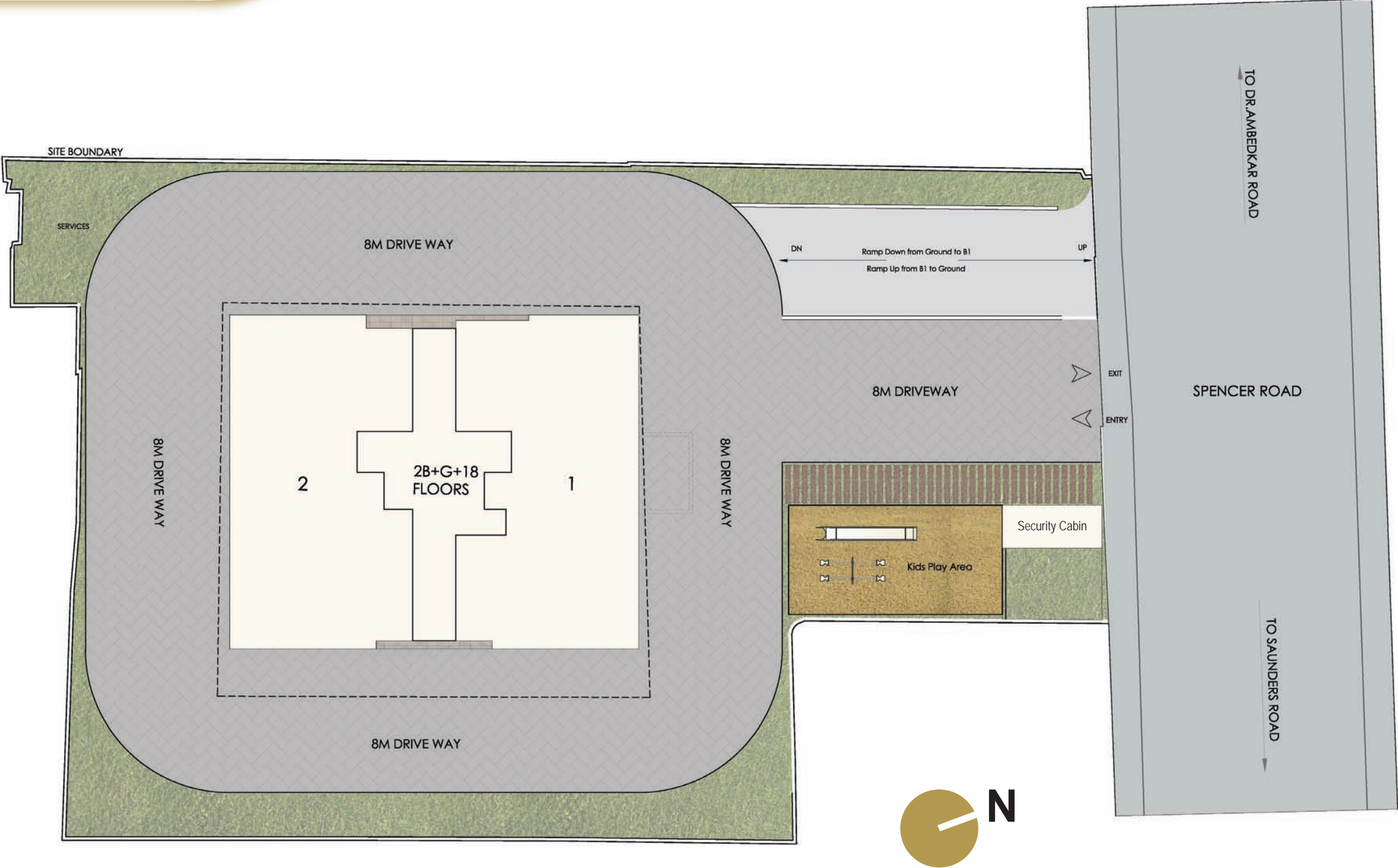
Read on and discover a home that has but few equals in Bangalore.



Exterior View



Site Plan



Entry View



Level 1 Ground Floor Plan



Lobby View



Artist's Impression

Living / Dining



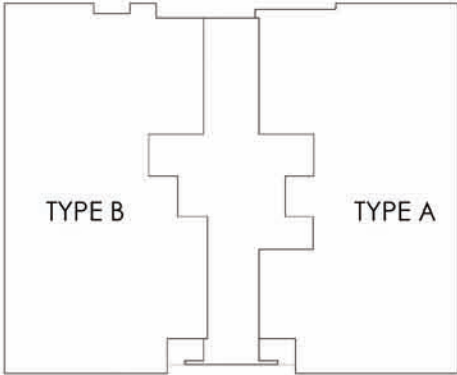
Artist's Impression

Level 2 to 18 Typical Floor Plan



TYPE B
AREA : 2387 SQ.FT

TYPE A
AREA : 2372 SQ.FT



KEY PLAN

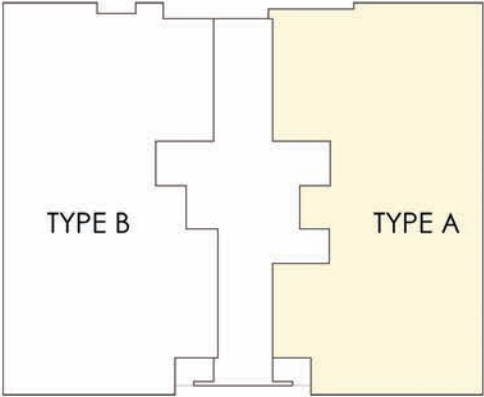


Kitchen View



Artist's Impression

Type A Typical Floor Plan
Levels 2 to 18



KEY PLAN



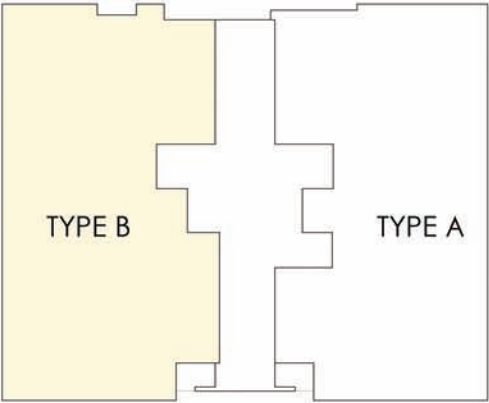
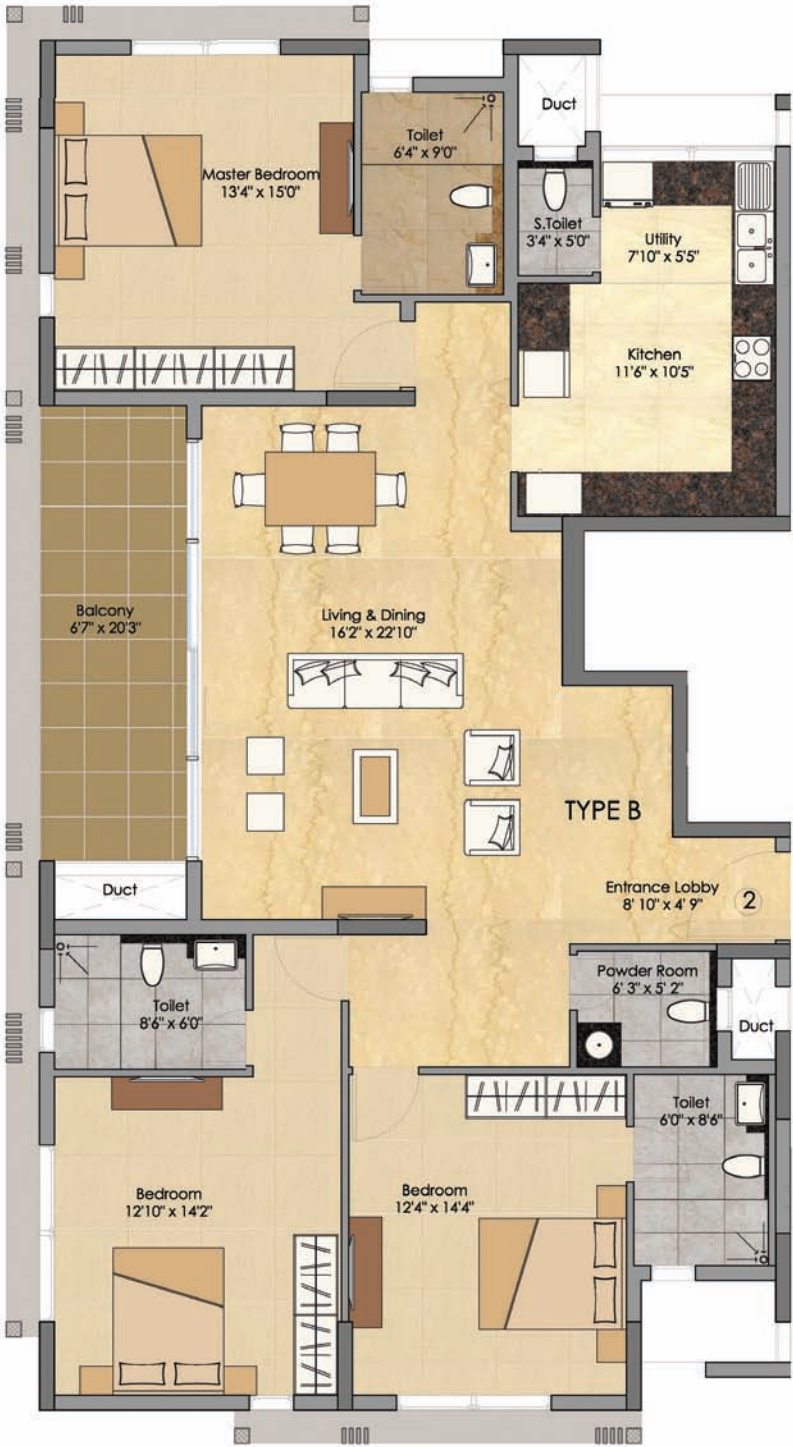
TYPE A
AREA : 2372 SQ.FT

Bedroom View



Artist's Impression

Type B Typical Floor Plan
Levels 2 to 18



KEY PLAN



TYPE B
AREA : 2387 SQ.FT

Level 19 Terrace Plan



Aerial View



Artist's Impression

Pool View

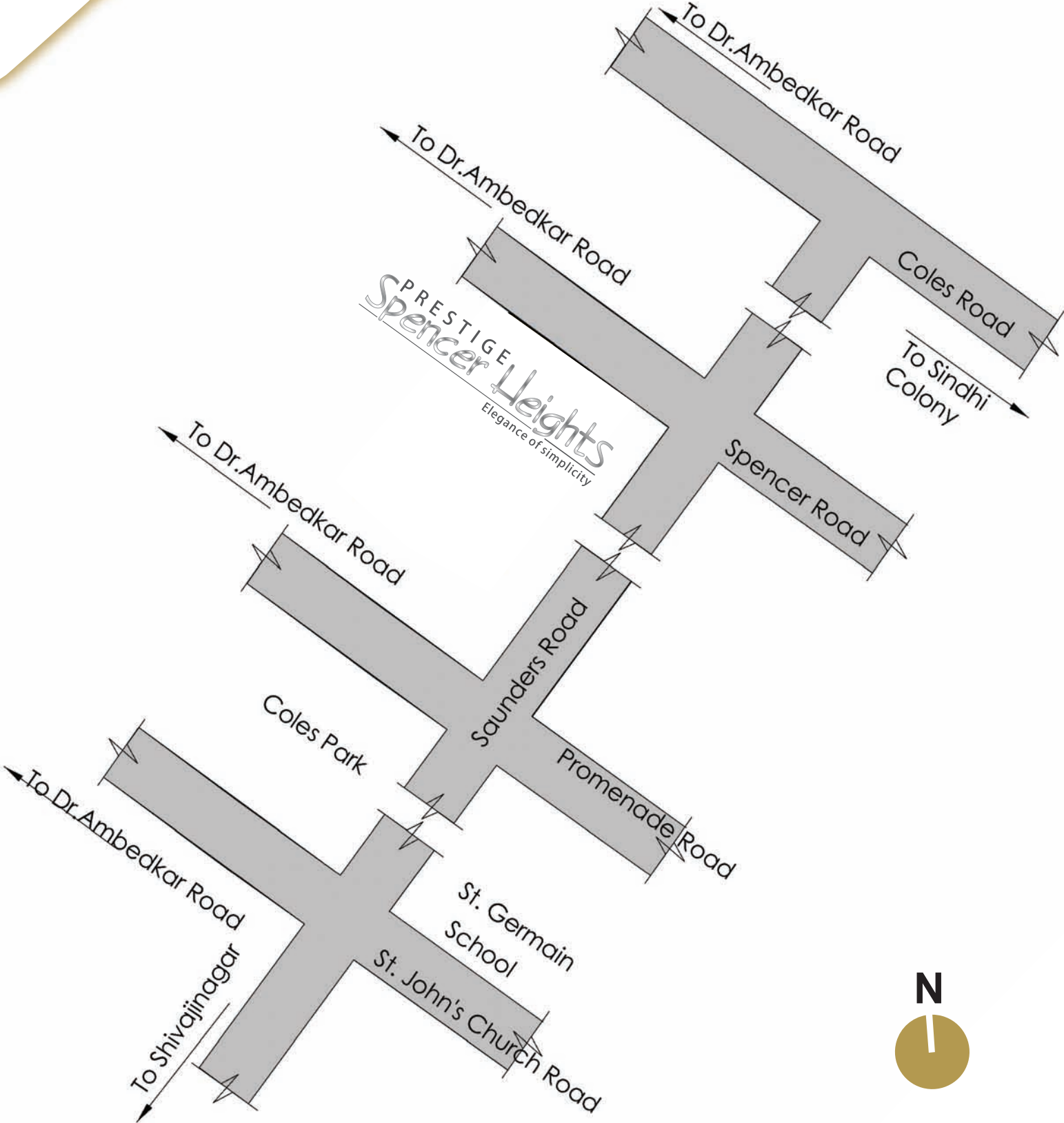


Artist's Impression

Night View



Location Map





Prestige Estates Projects Limited

‘The Falcon House’, No.1, Main Guard Cross Road, Bangalore - 560 001.

Ph: +91-80-25591080. Fax: +91-80-25591945. E-mail: properties@vsnl.com

www.prestigeconstructions.com

Follow us on



This booklet is conceptual and not a legal offering. The promoter reserves the right to change, alter, add, or delete any of the specifications mentioned herein without prior permission or notice.
The furniture shown in the plans is only for the purpose of illustrating a possible layout and does not form a part of the offering. Further, the dimensions mentioned do not consider the plastering thickness.