



GREEN
PARK

—KONDHWA—

RERA REGISTERED

IGBC GOLD PRE-CERTIFIED PROJECT

DESIGNED BY ARCHITECT HAFEEZ CONTRACTOR



KONDHWA GETS ITS FIRST LANDMARK- DESIGNED BY ARCHITECT HAFEEZ CONTRACTOR



MINDFUL LUXURY

For those who desire more than stature and pursue a life of substance, we have crafted homes that feel 'just right'. Mindful about your comforts, convenience and commitment. Nestled in the heart of the city, enveloped in the best of amenities, exquisite in style and caring for the environment, Greenpark is where indulgence meets elegance.

- 🕒 Thoughtfully designed & passionately built
- 🕒 Secured gated community
- 🕒 Host of amenities for your complete family
- 🕒 Vaastu compliant- Efficient layouts
 - 🕒 4BHK Grand with servant's unit
 - 🕒 3BHK Luxe with servant's unit
 - 🕒 2BHK Maxima

VANTAGE NEIGHBOURHOOD

Greenpark is centrally located in one of the Pune's most rapidly developing cosmopolitan locales and a fast-appreciating suburb- Kondhwa. Just a few kilometers from the bustling MG Road, it is well connected to the Railway Station, Airport as well as the established city centers. This makes Greenpark ideal for the quintessential urban dweller.



CONNECTIVITY

	KMS
Gera Junction	3.1
Pune- Bangalore Highway	4.7
Pune Camp	6.9
Swargate	7.7
Pune Railway Station	9.2
International Airport	16



SCHOOLS

M Kothari National School	0.6
Bishop's School, Undri	3.3
RIMS International School	3.4
Vibgyor School	3.9
Delhi Public School	4.6



INSTITUTES

Jamila Arif Fazlani College	1.5
Sinhagad College	2.2
NIBM	3.2
Bharati Vidyapeeth	6.0



EATERY AND CLUBS

	KMS
AL-ARABI	1.7
Jyoti Restaurant	2.1
Kalyan Bhel	3.1
ZK's (Zaheer Khan's Restaurant)	3.1
Corinthians Club	3.8



LANDMARKS

Kausar Bagh Masjid	2.0
ISKCON Temple	4.4
Ruby Hall Clinic	4.8
Katraj Jain Mandir	5.6
St Mary's Church	6.3



MALLS AND ENTERTAINMENT

Konark E-Square	1.2
INOX (Dorabjee Mall)	1.8
INOX (Fatima Nagar)	6.1
Kumar Pacific Mall	6.9



BESPOKE LUXURY

Greenpark! The name says it all. These apartments are placed within a setting of pristine beauty. With maximum possible open land and green space, every bit has been designed to bring inner harmony for you and your family, which is next to impossible to find elsewhere. Greenpark is yours for the asking.

- Grand entrance lobbies
- Large typical lobbies
- Superlative apartment layout with
 - Entry vestibules
 - Walk-in-wardrobes/ wardrobe niches
 - Plentiful light & cross ventilation
 - Subtle palette to blend with your taste
 - Decks with splendid city view

*The images are purely conceptual and not a legal offering

A LITTLE THOUGHT GOES A LONG WAY



AMENITIES

- Vehicle- free amenities space
- Amphitheater
- Jogging track
- Kids play area with Skating Rink
- Yoga & Meditation lawns
- Well appointed clubhouse with
 - Gymnasium
 - Multipurpose room & party lawn
 - Business corner with library
 - Indoor game room
 - Swimming pool with kids pool
 - Steam & massage room
 - Senior citizens relaxation area

SPECIFICATIONS

- Video door phone connected to building & complex security
- Powder coated engineered system windows with mosquito mesh
- Laminated glass railing for assured safety
- Wooden door frames
- HDF skin door shutters with Melamine polish
- Vitrified tile flooring in all rooms
- Matt finish flooring tiles for bathrooms & decks
- Branded bathroom fittings & fixtures
- Branded Modular Kitchen as per Apartment configuration

GREEN AMENITIES

- Solar lighting to parking levels
- Water recycling for gardening and flushing - STP
- Rain water recharging
- Waste management - OWC



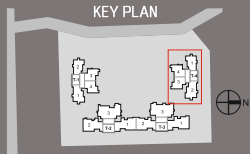
LEGEND

1. ENTRY/ EXIT AND SECURITY CABIN
2. CLUBHOUSE
3. ADULTS POOL
4. KIDS POOL
5. MULTI PURPOSE LAWN
6. OPEN AMPHITHEATRE
7. YOGA AND MEDITATION LAWNS
8. PLANTATION
9. KIDS/TODDLER PLAY AREA
10. SENIOR CITIZENS AREA
11. ENTRY TO BASEMENT
12. INTERNAL DRIVEWAY
13. LOBBY DROP OFF
14. PARKING
15. PEDESTRIAN PATH
16. JOGGING TRACK
17. PERGOLA WITH SEATING
18. CENTRAL LANDSCAPE PLAZA
19. SEATING
20. SKATING RINK
21. OUTDOOR GYM



MASTER LAYOUT

EVEN FLOOR

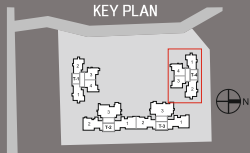


TOWER-4	TYPICAL EVEN FLOOR FLAT	RERA AREA (SQM)*	ENCLD AREA (SQM)	TERRACE / DECK (SQM)	UTILITY / DRY BALC (SQM)	TOTAL AREA (SQM)*
Series 1 Flats	201, 401, 601, 801, 1001, 1201, 1401	64.63	12.06	8.19	3.72	88.60
Series 2 Flats	202, 402, 602, 802, 1002, R, 1402	67.31	12.06	8.18	3.72	91.27
Series 3 Flats	203, 403, 603, 803, 1003, 1203, 1403	73.79	3.90	6.46	2.61	86.76
Series 4 Flats	204, 404, 606, 804, 1004, 1204, 1404	73.12	3.90	4.60	2.61	84.23

*(1 sq.m=10.764 sq.ft)

TOWER- 4 (2 BEDROOM APARTMENT)

ODD FLOOR



TOWER-4	TYPICAL ODD FLOOR FLAT	RERA AREA (SQM)*	ENCLD AREA (SQM)	TERRACE / DECK (SQM)	UTILITY / DRY BALC (SQM)	TOTAL AREA (SQM)*
Series 1 Flats	101, 301, 501, 701, 901, 1101, 1301	64.28	12.07	8.77	3.72	88.84
Series 2 Flats	102, 302, 502, R, 902, 1102, 1302	66.96	12.07	8.77	3.72	91.52
Series 3 Flats	103, 303, 503, 703, 903, 1103, 1303	73.16	3.90	4.60	2.62	84.28
Series 4 Flats	104, 304, 504, 704, 904, 1104, 1304	73.83	3.90	6.46	2.61	86.80

*(1 sq.m=10.764 sq.ft)

TOWER- 4 (2 BEDROOM APARTMENT)



2BHK APARTMENT LAYOUT -EVEN FLOOR



2 BEDROOM APARTMENT LAYOUT



2BHK APARTMENT 3D LAYOUT -EVEN FLOOR



2 BEDROOM APARTMENT 3D LAYOUT



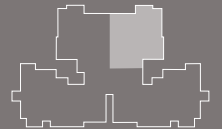
2BHK APARTMENT LAYOUT -ODD FLOOR



2 BEDROOM APARTMENT LAYOUT



2BHK APARTMENT 3D LAYOUT -ODD FLOOR



2 BEDROOM APARTMENT 3D LAYOUT



Artist's Impression



Artist's Impression



*Actual Photograph Shot On Location- Tower-2

ASSOCIATED BRANDS



CRAFTED BY INDUSTRY STALWARTS

Design Consultant: Ar. Hafeez Contractor is a world-renowned architect with prestigious national and international projects to his credit.

Construction Partner: Industry leaders, Bhate & Raje Construction Company Private Limited., have a strong reputation of consistently delivering qualitative and challenging projects for more than 20 years.

Structural Consultant: J+W consultants, stalwarts in structural design and are instrumental in changing the skylines of many cities.

MEP Consultant: S.N.Joshi Consultants Private Limited, is one of Pune's most trusted name in MEP services.



Since 1987, Capricorn Group has been a reputed player in the global real estate sector with expertise in land acquisition and construction. The Group's Strong presence in India, UK and UAE encompasses several successfully completed and ongoing ventures in prestigious residential, commercial and hospitality sectors.

Known for a holistic view of the real estate market, their credibility stems from ethical customer relationship, delivering quality project within time, building communities and nurturing investments for all the stakeholders.

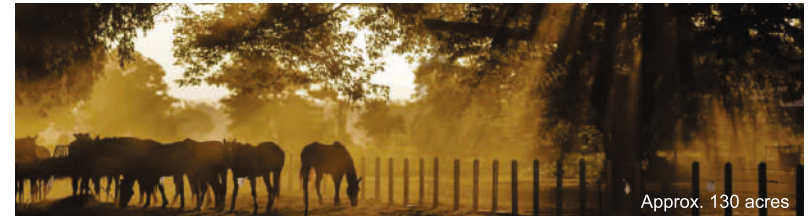
With over 700 acres of land across India, the Capricorn Group is poised for more successful ventures in the coming years.

VISION INDIA

MULSHI



URULI
KANCHAN



SHAHPUR





FOR SITE VISIT, KINDLY CALL

+91 774 100 5000

AND FOR MORE DETAILS, KINDLY LOGIN

www.capricorngreenpark.com

Site Address: Capricorn Greenpark, Sr.no. 25/2/2A, Behind HP Petrol Pump, Kondhwa (BK) Pune - 411 048,
E: sales@capricorngroup.co.in **I W:** www.capricorngroupindia.com

Corporate Address: Capricorn Group, 192 Dhole Patil Road, Pune-411001.
T: 020 66229000

RERA REGISTRATION NO.- P52100000501

Disclaimer: The e-brochure is purely conceptual and not a legal offering. The company reserves the right to add, delete or alter any details and / or specifications in its endeavor to make improvements as and when required.