



LUXURY APARTMENTS
THAT BUST THE
MOST PREVALENT
APARTMENT MYTHS.






MYTH #1

YOU NEVER GET
EVERYTHING YOU
WANT. YOU HAVE
TO COMPROMISE.



MYTH #2

NOWADAYS YOU
PROBABLY GET A
STUDIO APARTMENT
FOR 65 LAKHS.




MYTH #3

YOU CAN CHOOSE
JUST ONE THING.
EITHER LUXURY
OR VALUE.




MYTH #4

LOOK AT YOUR
FIRST HOME
AS A TAX
SAVING TOOL




MYTH #5

MARKETS ARE DOWN.
YOU SHOULD
PROBABLY WAIT
FOR A BETTER DEAL.



MYTH #6

CLUBHOUSE AND
POOL? IT WILL
DEFINITELY BE
ABOVE A CRORE.





LUXURY, VALUE,
LOCATION, PRICE,
DESIGN & PLANNING.
SIX IDEAS TO BUST MYTHS.

Presenting Orchard Square from Valmark- an ocean of tranquility, accessibility, convenience and value, taking shape at the heart of the IT and Corporate hub in JP Nagar 8th Phase. In fact some of your future neighbours are Oracle, Accenture, IIMB, Ryan International School, Fortis, Apollo, Royal Meenakshi Mall, Vega City Mall, etc. - just to name a few. On offer are some of the choicest 2 and 3 BHK apartments, executed by Valmark, a group obsessed with quality and timely execution. Spread over 3.25 acres of designer landscaping, Orchard Square busts those apartment myths easily with multitude of features and amenities that include a designer Clubhouse, Pool, Gym and the works. So, before compromising on your home buy, check us out. Rest assured, you'll be pleasantly surprised.



SUPERB LOCATION



OMG PRICE TAG



EASY ACCESSIBILITY



WOW LIFESTYLE

PRESENTING

Orchard
SQUARE

FAST TAKING SHAPE IN JP NAGAR 8TH PHASE



MASTER PLAN

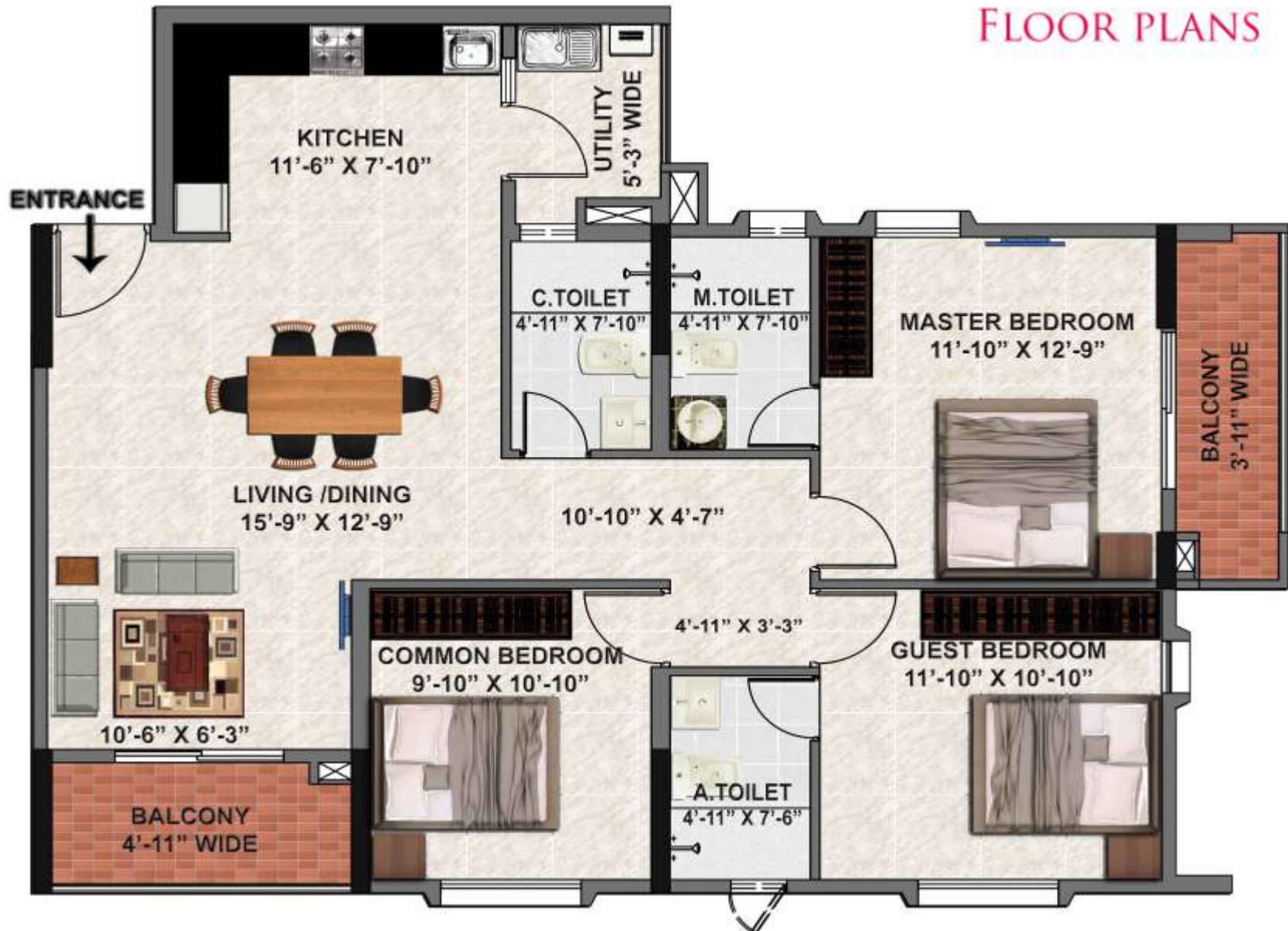


Note: This is a tentative master plan - may vary on finalization.

UNIT TYPE :- A1 & D1 (3BHK)

S.B.A:- 1455 SFT.

FLOOR PLANS



*DISCLAIMER : This Floor Plans are for illustrative purposes only and are intended to convey the concept and vision for the apartment. The promoter reserves right to make minor alterations based on Site conditions. The Measurements given are approximate & excluding plastering.



UNIT TYPE :- A2 & D2 (3BHK)

S.B.A:- 1408 SFT.



***DISCLAIMER :** This Floor Plans are for illustrative purposes only and are intended to convey the concept and vision for the apartment. The promoter reserves right to make minor alterations based on Site conditions. The Measurements given are approximate & excluding plastering.



UNIT TYPE :- A3 & D3 (3BHK)

S.B.A:- 1408 SFT.

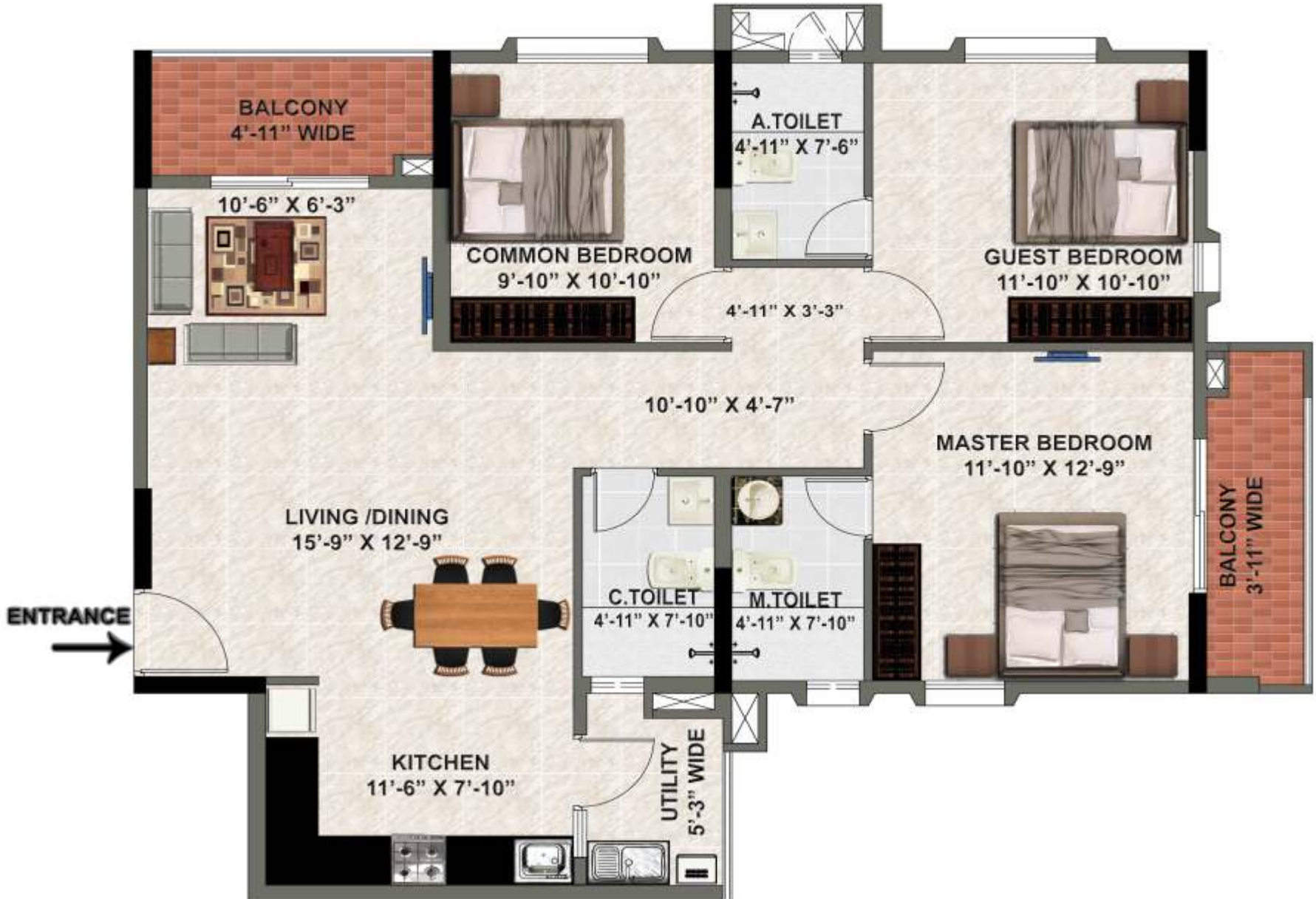


*DISCLAIMER : This Floor Plans are for illustrative purposes only and are intended to convey the concept and vision for the apartment. The promoter reserves right to make minor alterations based on Site conditions. The Measurements given are approximate & excluding plastering.



UNIT TYPE :- A4 & D4 (3BHK)

S.B.A:- 1455 SFT.



*DISCLAIMER : This Floor Plans are for illustrative purposes only and are intended to convey the concept and vision for the apartment. The promoter reserves right to make minor alterations based on Site conditions. The Measurements given are approximate & excluding plastering.



UNIT TYPE :- B1 & C1 (2BHK)

S.B.A:- 1042 SFT.



***DISCLAIMER :** This Floor Plans are for illustrative purposes only and are intended to convey the concept and vision for the apartment. The promoter reserves right to make minor alterations based on Site conditions. The Measurements given are approximate & excluding plastering.



UNIT TYPE :- B2 & C2 (2BHK)

S.B.A:- 1105 SFT.



***DISCLAIMER :** This Floor Plans are for illustrative purposes only and are intended to convey the concept and vision for the apartment. The promoter reserves right to make minor alterations based on Site conditions. The Measurements given are approximate & excluding plastering.



UNIT TYPE :- B3 & C3 (2BHK)

S.B.A:- 1105 SFT.

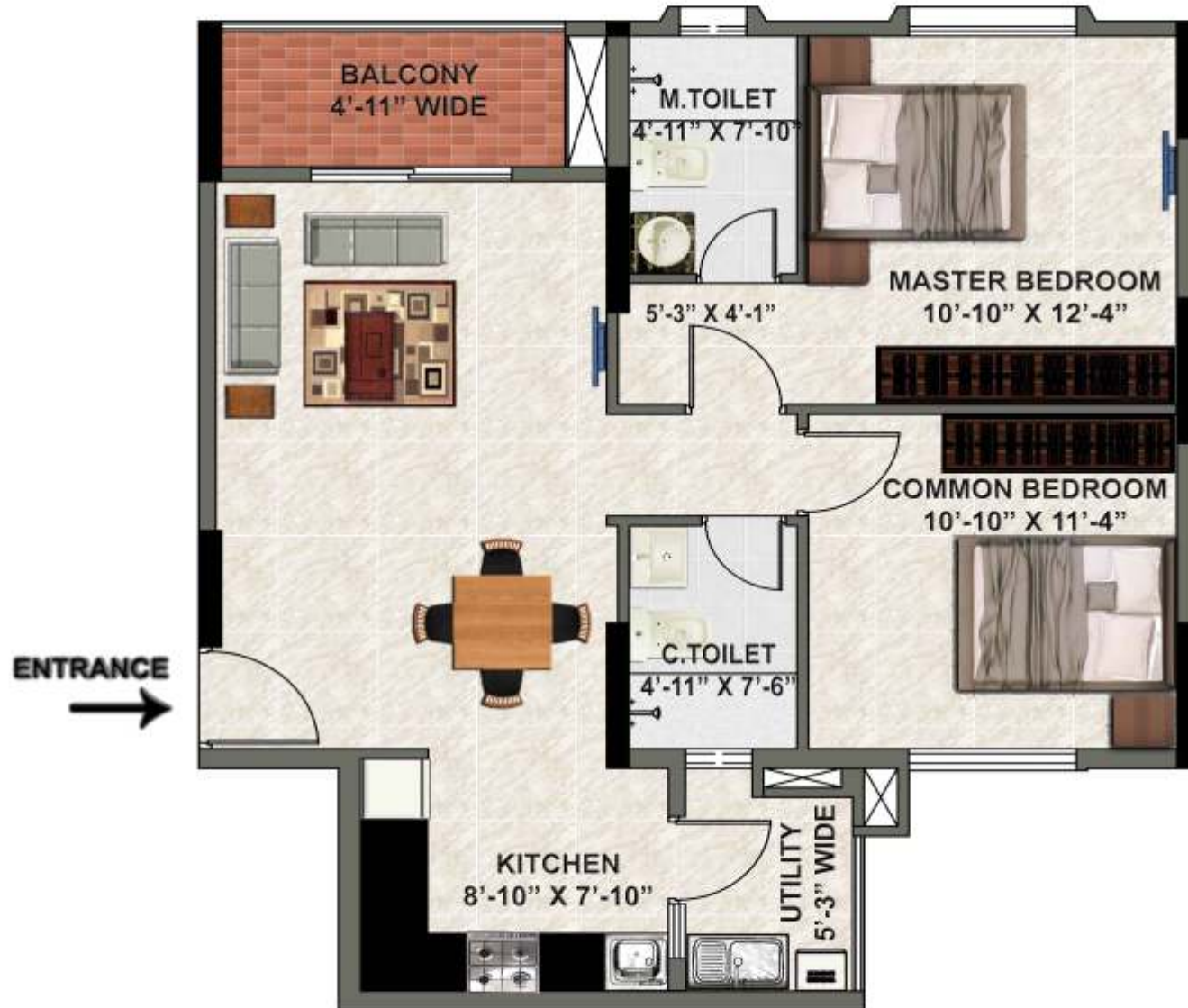


*DISCLAIMER : This Floor Plans are for illustrative purposes only and are intended to convey the concept and vision for the apartment. The promoter reserves right to make minor alterations based on Site conditions. The Measurements given are approximate & excluding plastering.



UNIT TYPE :- B4 & C4 (2BHK)

S.B.A:- 1042 SFT.



***DISCLAIMER :** This Floor Plans are for illustrative purposes only and are intended to convey the concept and vision for the apartment. The promoter reserves right to make minor alterations based on Site conditions. The Measurements given are approximate & excluding plastering.



valmark.in

SOUPED-UP AMENITIES

- Clubhouse
- Swimming Pool
- Sauna & Steam
- Multipurpose Hall
- Indoor Badminton Court
- Children's Play Area
- Lush Landscaping
- Visitors Parking
- Jogging Track
- Gym
- CCTV Security

ORCHARD SQUARE - A QUICK GLANCE

2 and 3 beds
1042 - 1455 sft

G+16 floors
272 units

Excellent
accessibility and
luxury amenities

₹ 65 lakhs
onwards



LOCATION MAP



Orchard SQUARE

88801 13200 | sales@valmark.in