





1,2 & 3 BHK HOMES



5 WINGS | 12 STOREY



WORLD CLASS AMENITIES



MULTI-LEVEL PARKING



CONVENIENT LOCATION



MOEF APPROVED PROJECT



Representative image

WHAT WE HAVE IN STORE FOR YOU!

- ◆ Multi-level basement parking
- ◆ Infinity swimming pool
- ◆ Kids pool
- ◆ Pool deck lounge
- ◆ Spa & Massage room
- ◆ Steam room
- ◆ Club House
- ◆ Fully Equipped Gymnasium
- ◆ Multi-Purpose Hall
- ◆ Jogging Track
- ◆ Amphitheatre
- ◆ Step Garden
- ◆ Outdoor Kids Play Area
- ◆ Senior Citizen’s Area
- ◆ Indoor Games Room
- ◆ Entertainment Zone
- ◆ Cricket Pitch
- ◆ Outdoor Chess
- ◆ Leisure Lawn
- ◆ Star Gazing Zone
- ◆ Vastu Compliant Design
- ◆ Yoga & Meditation Zone
- ◆ Dedicated Pet’s Play Area





MAP NOT TO SCALE

WELCOME TO A NEIGHBOURHOOD WHERE CONVENIENCE IS ALWAYS WITHIN YOUR REACH

Pride Panorama brings the best of all worlds to your doorstep. Whether you've got a flight to catch or a metro, nothing will ever be too far away. Schools, hospitals and even the business district is merely a short drive away. Welcome to a neighbourhood where convenience is always within your reach.

- ◆ 1.0 kms from Saki Naka Metro Station
- ◆ 2.3 kms from CSM International Airport
- ◆ 3.2 kms from Seven Hills Hospital
- ◆ 4.3 kms from Powai
- ◆ 4.7 kms from BKC Business District



Representative image



NOTHING WILL EVER BE TOO FAR AWAY

When it comes to living it is necessary that travelling be as close as possible when you are on a a run. When it comes to Pride Panorama nothing is ever too far away.



Representative image



AMENITIES

THERE'S SOMETHING FOR THE WHOLE FAMILY TO ENJOY

When you're looking for a house,
you're actually looking out for your family.
At Pride Panorama, there's something for everyone to enjoy.



Representative Image



INFINITY SWIMMING POOL

Representative image



KIDS SWIMMING POOL

Representative image



SPA & MASSAGE ROOM

Representative image



GYMNASIUM

Representative image



JOGGING TRACK

Representative image



KIDS PLAY AREA

Representative image



PETS PLAY AREA

Representative Image



POOL DECK AREA

Representative Image



SPECIFICATIONS

HOME IS WHERE THE ART IS

They say a home is what you make of it. At Pride Panorama, it means a world of homes brought alive with the finest craftsmanship and skilful detailing. Every home is a masterclass in elegant flooring and amply-spaced out living areas that capture your eyes in a glance. After all, when it comes to enjoying a home, there's enough beauty to marvel at for a lifetime.

Representative image

LIVING AND DINING ROOM

- ◆ ***Flooring*** - Amoled marble flooring
- ◆ ***Doors*** - Dual Laminated Wooden Doors with ironmongery
- ◆ ***Windows*** - Aluminium/UPVC Sliding Windows
- ◆ ***Security System*** - Intercom and Video Door Phone



Representative image

BATHROOM

- ◆ **Flooring and Walls** - Designer anti-skid ceramic tiles of Kajaria *
- ◆ **Water Closet** - Premium WC of TOTO/CERA*
- ◆ **Sink** - Wash Basin of TOTO/CERA*
- ◆ **WC Flushing System** - Schell/Geberit*



Representative image

KITCHEN

- ◆ **Flooring** - Vitrified Tiles
- ◆ **Counter Top** - Ceramic Dado tiles
- ◆ **Gas** - LPG piped gas
- ◆ **Alarm System** - Gas Leak Detector
- ◆ **Utilities** - Separate Utility area
(with provision for power and water supply)



BEDROOM

- ◆ ***Flooring*** - Amoled marble flooring
- ◆ ***Doors*** - Dual Laminated Wooden Doors with ironmongery
- ◆ ***Windows*** - Aluminium/UPVC Sliding Windows



Representative Image



FLOOR PLANS

ISOMETRIC 1 BHK



ISOMETRIC 2 BHK

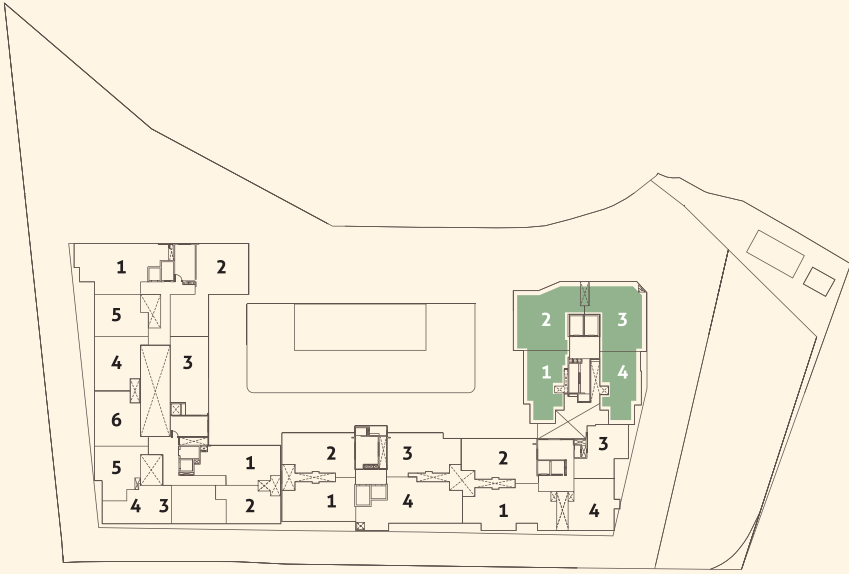


ISOMETRIC 3 BHK





WING A - TYPICAL FLOOR PLAN



WING-A APARTMENTS RERA CARPET AREA

Flat No.	Type	Sq. Mt.	Sq. Ft.
1	2 BHK	61.17	658.43
2	3 BHK	85.92	924.84
3	3 BHK	81.06	872.53
4	2 BHK	61.13	658.00



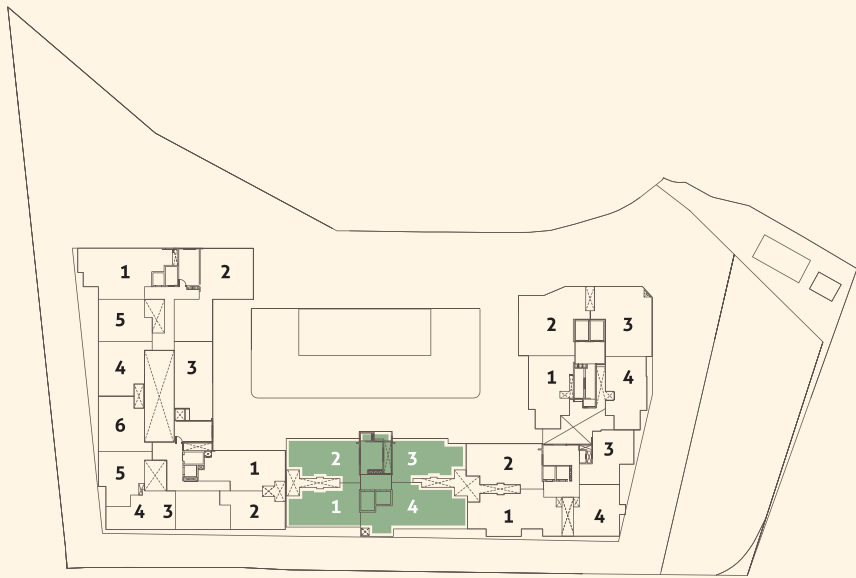
WING B - TYPICAL FLOOR PLAN



WING-B APARTMENTS RERA CARPET AREA			
Flat No.	Type	Sq. Mt.	Sq. Ft.
1	3 BHK	78.07	840.35
2	2 BHK	62.43	672.00
3	1 BHK	47.41	510.32
4	1 BHK	49.95	537.66



WING C - TYPICAL FLOOR PLAN



WING-C APARTMENTS RERA CARPET AREA			
Flat No.	Type	Sq. Mt.	Sq. Ft.
1	2 BHK	60.54	651.65
2	2 BHK	60.56	651.87
3	2 BHK	60.59	652.19
4	3 BHK	86.25	928.40

OTHER PROJECTS



Representative image

MUMBAI PROJECTS



PARK ROYALE



PRIME CORPORATE PARK

PUNE PROJECTS



THE SPIRES



PARK LANDMARK

BANGALORE PROJECTS



PRIDE PEGASUS



PRIDE CROSSWINDS VILLA



BROOKLYN



KINGSBURY PHASE I & II

OUR TEAM

Design Architect: Mandaviwala Qutub & Associates

Structural Engineers: JW Consultants

Landscape Architects: Kishore D Pradhan Architecture + Landscape

MEP Consultants: Engineering Creations Public Health Consultancy

Liaoning Architect: Space-age Consultants



BUILDING TOMORROW. TODAY.

The Pride Group has been a leader in developing state-of-the-art commercial and residential projects, having been consistently transforming cityscapes across Pune, Mumbai and Bangalore, since its inception in the mid-1990's. Bold contemporary designs, highest attention to detail, excellent engineering standards and uncompromised focus on ethics have enabled the Group to earn the distinction of being an innovative and reliable development firm.

We are committed to excellence in design, development, construction and selling residential and commercial spaces for the urban Indian citizen. Our sights are set on the future with a simple motto:

Building Tomorrow. Today.



Representative image



Site Address:

**Pride Panorama, CTS No 657, Mohili Village, Kurla (W)
Andheri - Kurla Rd, Saki Naka,
Mumbai, Maharashtra 400072**

Phone: 8095561000

Email: panorama@pridelifestyles.com

Website: www.pridepanorama.com

The project "Pride Panorama – Phase 1" is registered with MahaRERA under the project registration No. P51800034548 and can be viewed at <https://maharera.mahaonline.gov.in>

This advertisement does not constitute an offer. For details, please visit sales office/RERA website.

Plans for the project are subject to further approvals/modification from the concerned authority/ies and/or the Promoter.