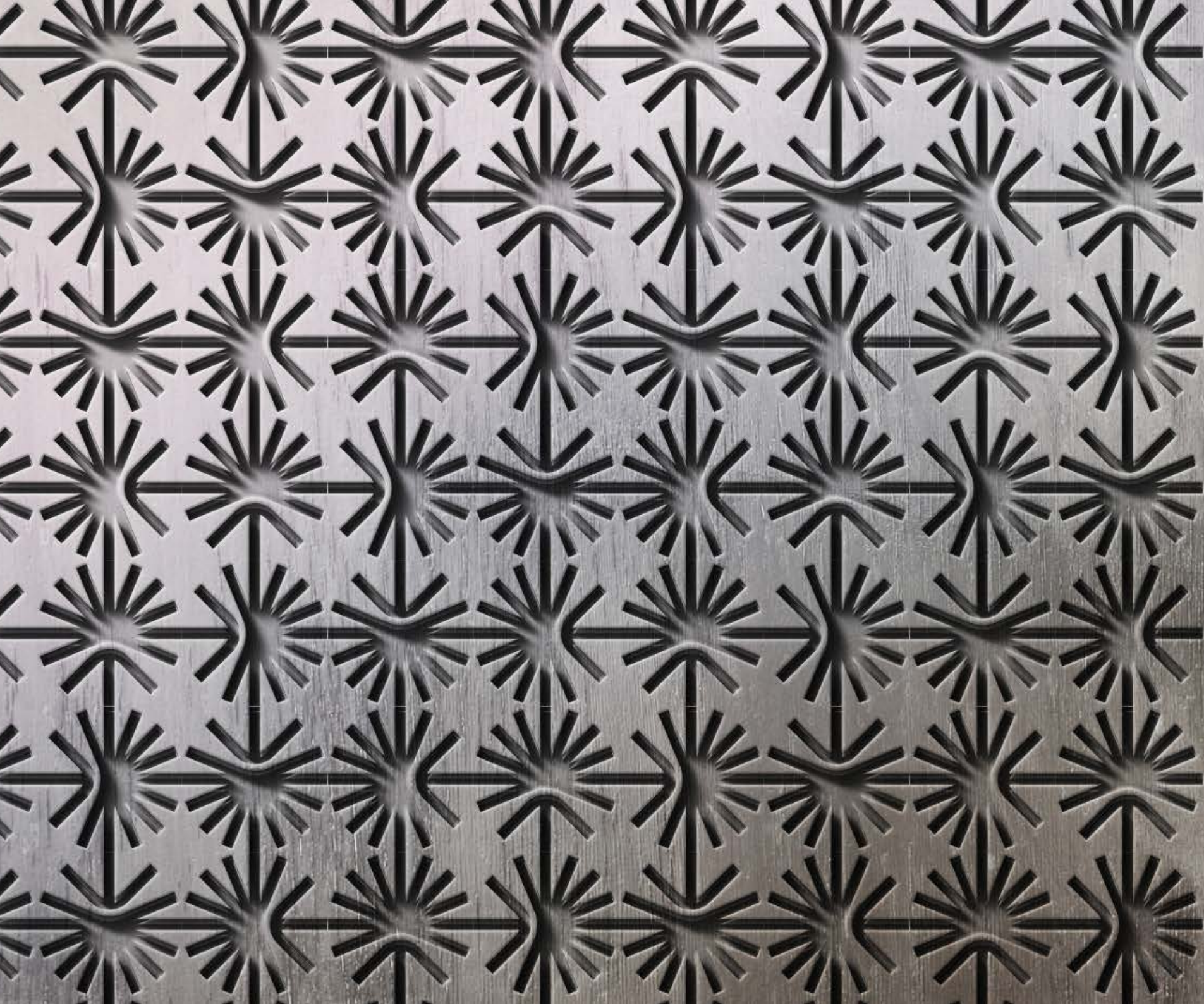




**YOU HAVE CHOSEN THIS MOMENT**





**It's not just an irrelevant accident in time that has led you here.**

Something was driving your mind to explore; to rise a step above the usual. Maybe it was a dream; or an unspoken aspiration; an ambition or a higher expectation.

Whatever be your drive, you have arrived here at an opportune moment in time.





Lifestyle of the Rising

## 2 BHK & 3 BHK Apartments, Rahatani

**DESIGNED TO REDEFINE LUXURY**

Four towers of **22 storeys**

Spread over five acres

**25,000 sq. ft.** open space

**24** exciting amenities

LEGACY LIFESPACES

Artist's impression for  
representative purpose only.  
Not for sale.





# Luxury is 'careful attention to the smallest of your needs'

**The smallest of your needs is a high  
priority for us.**

Delivering quality to the last detail is a  
matter of principle at Legacy Lifespaces.  
Every square foot is designed to deliver an  
optimum performance.

Artist's impression for  
representative purpose only.  
Not for sale.



## Luxurious Design

**Luxurious grand aura and entrance.  
Optimised utilisation of space and  
natural elements.  
Designer elevation.  
AC designer entrance lobby for each  
building.**



## High Quality of Construction

**Working towards the ideal of defect free and  
leakage free construction.  
Standard construction practices followed.**

## Low Maintenance Cost

**Water conservation through good management.  
Power conservation and reduced electricity bills  
with photovoltaic cells in common areas.**



## Legacy Highlights

**Strict adherence to legal requirements.  
Clean and transparent financial transactions.  
On-time delivery, always.**



# Dreams in concrete

Your moment of choice is here

Choice of **2 BHK & 3 BHK**

Multiple plans and sizes for **3 BHK**

**Sun and breeze** optimised spaces

**50%** apartments with a '**view of the amenities area**'



Artist's impression for  
representative purpose only.  
Not for sale.



**2 BHK**

832 sq. ft.



Artist's impression for  
representative purpose only.  
Not for sale.

2 BHK

832 sq. ft.



Artist's impression for  
representative purpose only.  
Not for sale.



**3 BHK**  
Royal  
1074 sq. ft.



Artist's impression for  
representative purpose only.  
Not for sale.



**3 BHK**

Royal  
1074 sq. ft.



Artist's impression for  
representative purpose only.  
Not for sale.



**3 BHK**  
Grand  
1141 sq. ft.

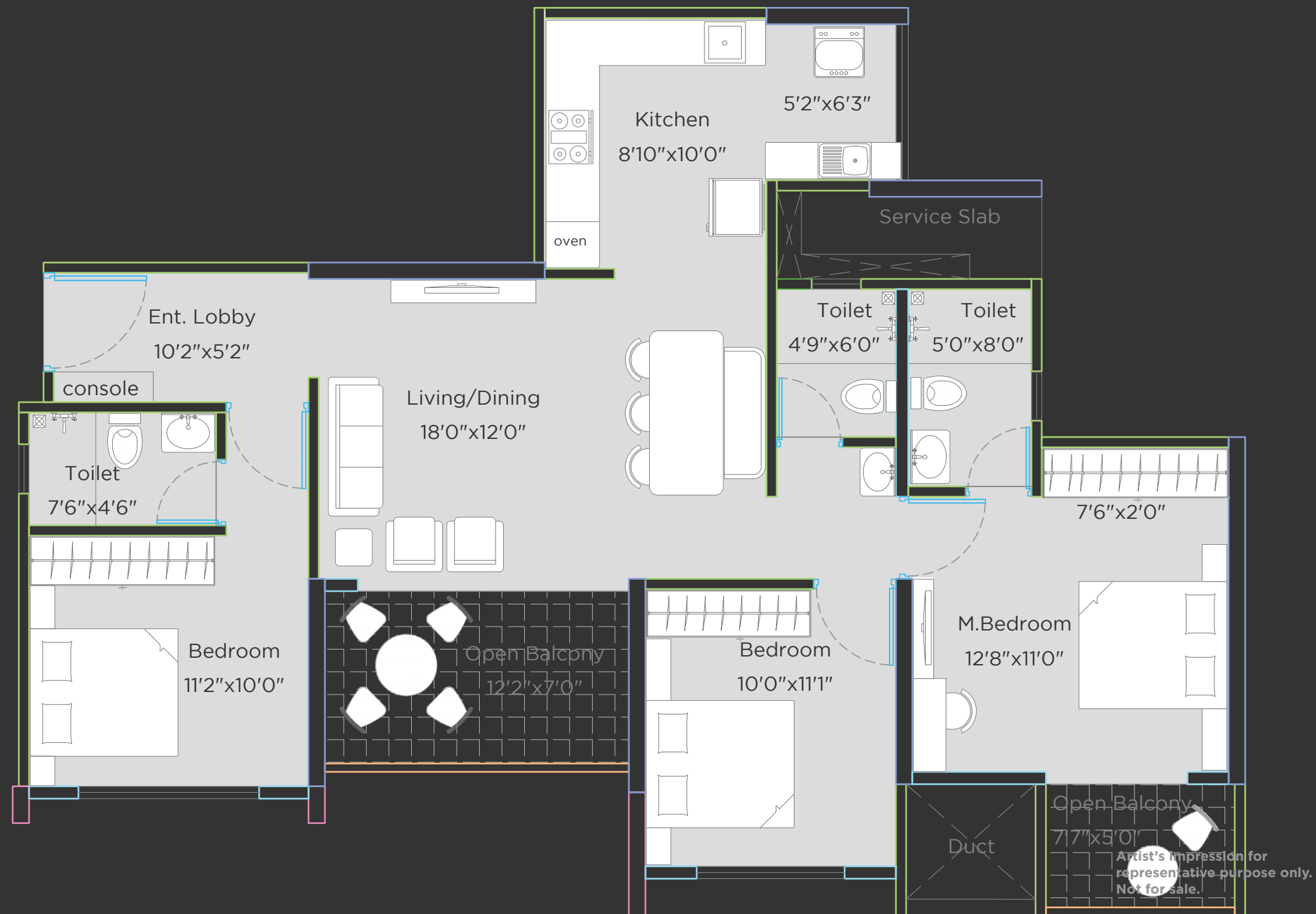


Artist's impression for  
representative purpose only.  
Not for sale.



# 3 BHK

Grand  
1141 sq. ft.





**3 BHK**  
Supreme  
1297 sq. ft.



Artist's impression for  
representative purpose only.  
Not for sale.



# 3 BHK

Supreme  
1297 sq. ft.





# Specifications

## Common areas

- Designer elevation
- Designer entrance lobby for each building
- Earthquake resistant RCC frame structure
- RCC mivan structure
- Security cabin with intercom facility
- Centralized Tata Sky DTH connection
- Individual branded lift with DG back up for each building
- Individual limited electrical DG back up to each apartment
- Rainwater harvesting
- Well planned Geberit plumbing & drainage system for water usage
- Weather proof acrylic good quality texture paint for external walls
- LED lights in common areas with DG Backup

## Apartments

- All RCC walls
- Gypsum-finish surface to inner walls in the entire apartment and gypsum finish in common lobbies
- Invisible grills for all windows except bathrooms & hall
- Concealed fire resistant copper wiring in all apartments
- Ample light points with branded modular sockets & switches **Havells/ Schneider/ Legrand / equivalent**
- T.V. point for master bedroom and living room
- A.C. points in all bedrooms
- Adequate electrical points for kitchen
- Provision for exhaust fan and electrical boiler electrical points in bathroom
- Provision of tap & electrical point for washing machine
- 800 X 1600 vitrified tiles with matching skirting in the entire apartment
- Designer dado 600 X 1200 tiles in bathroom up to lintel level & in kitchen above platform (height 2 feet)
- Ceramic tiles in terrace and utility area
- Good quality artificial granite/ granite window sills
- Designer laminated doors with wooden/ granite/ marble door frame
- Elegant both sided lamination main door with digital lock
- All internal doors with both sided laminates
- All door mortise locks for internal doors
- CPVC/ UPVC, SWR plumbing and branded sanitary ware
- CEP fittings of **Grohe/ TOTO/ equivalent brand**
- Sanitary ware of **TOTO/ American standard/ Duravit/ equivalent brand**
- Sliding 3 track system aluminium windows with mosquito mesh
- Two track sliding system aluminium windows in kitchen and louvres in bathrooms
- Video door phone with intercom facility

## Geberit Plumbing

**Low maintenance, concealed plumbing. Prevents leakage and seepage.**

## Invisible Grills

**Bird nets that don't obstruct your view.**

## Digital Locks

**Experience enhanced safety.**

## Rain Shower

**8" Grohe/equivalent brand shower for the feel of rain in your bathroom!**



An aerial photograph of a park featuring three circular playgrounds with wood chip flooring, each containing different equipment like slides, swings, and climbing structures. The playgrounds are connected by a winding path and surrounded by green grass and trees. Benches are placed along the path.

# Panorama of aspirations **24 thoughtful amenities to enrich your life**

**A panorama of 24 thoughtfully designed amenities that cater to all ages and different interests.**

From the health and sports enthusiasts to the nature lovers, and from the avid readers to the chatty souls, everybody will find a corner they can call their own.

Artist's impression for  
representative purpose only.  
Not for sale.



# Life's fulfilling moments

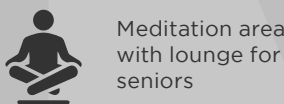
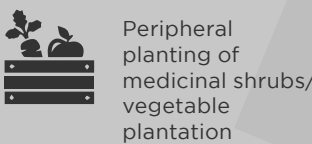
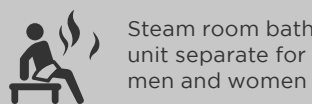
## Grand Aura



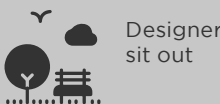
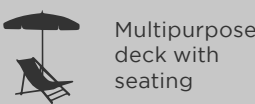
## Convenience zones



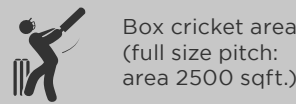
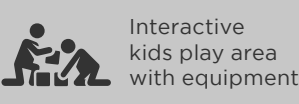
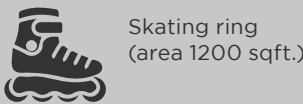
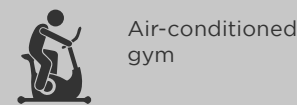
## Health is wealth



## Social life and entertainment



## Sports and play activities







Artist's impression for  
representative purpose only.  
Not for sale.



# Living at the centre of **‘convenience’**

**Sitting in the heart of PCMC, flanked by Pimpri and Pimple Saudagar on either side.**

Rahatani has an easy access to all facilities in Pimpri and Pimple Saudagar.



# Advantage Rahatani

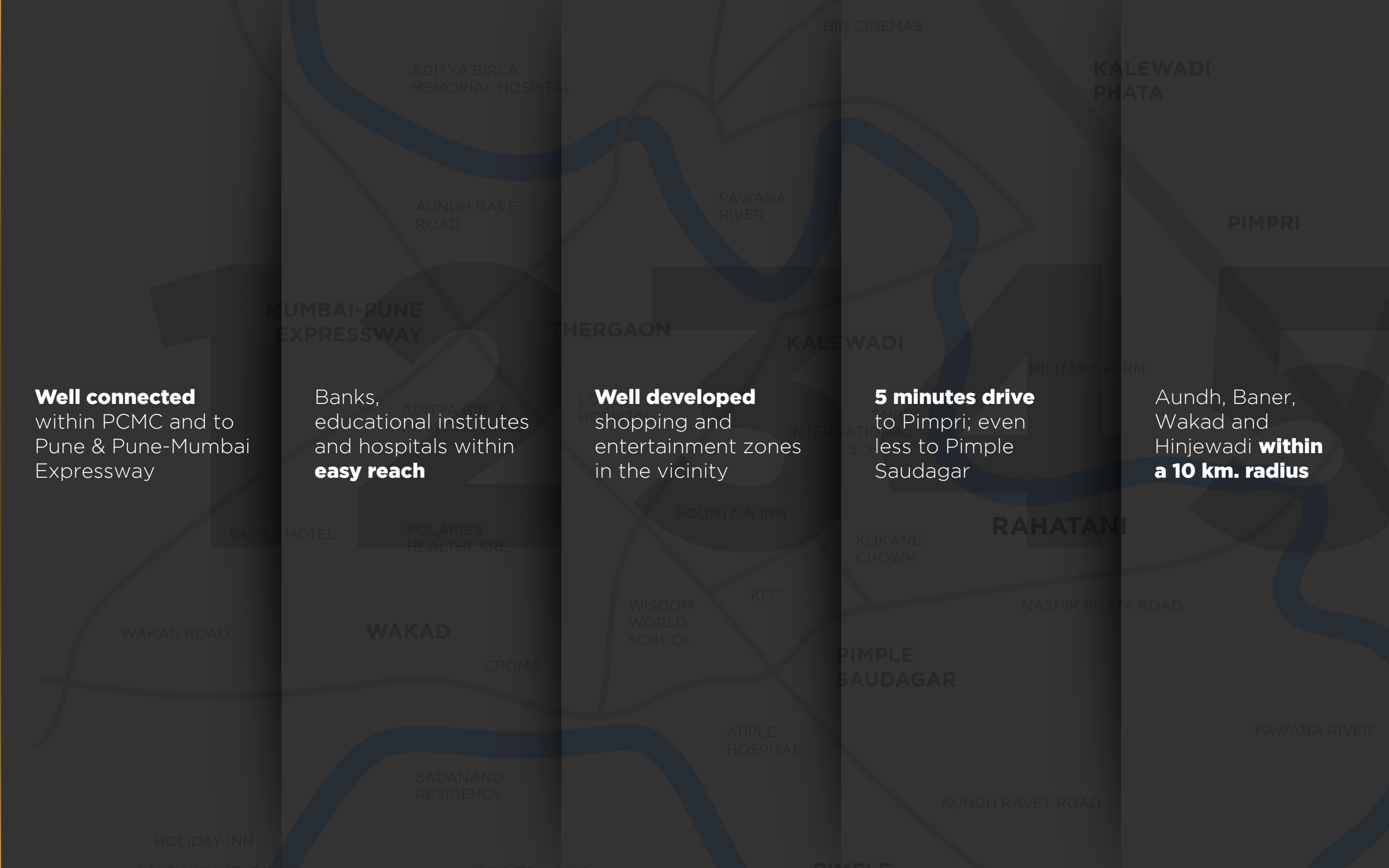
**Well connected**  
within PCMC and to  
Pune & Pune-Mumbai  
Expressway

Banks,  
educational institutes  
and hospitals within  
**easy reach**

**Well developed**  
shopping and  
entertainment zones  
in the vicinity

**5 minutes drive**  
to Pimpri; even  
less to Pimple  
Saudagar

Aundh, Baner,  
Wakad and  
Hinjewadi **within  
a 10 km. radius**





# The legacy of **Legacy**

With over 26 completed and on-going projects in PCMC, Legacy Lifespaces has delivered happiness to over 3000 families in the last fifteen years.

## Completed projects

- |                              |             |                        |             |
|------------------------------|-------------|------------------------|-------------|
| • <b>Twin Arcs A, B</b>      | - Punawale  | • <b>Legacy Bliss</b>  | - Hinjewadi |
| • <b>Twin Arcs C</b>         | - Punawale  | • <b>Legacy Crest</b>  | - Punawale  |
| • <b>Aqua Marina</b>         | - Ravet     | • <b>Legacy Aeon</b>   | - Baner     |
| • <b>Legacy Urbania</b>      | - Punalwale | • <b>Legacy Vista</b>  | - Rhatani   |
| • <b>Aqua Blue A &amp; B</b> | - Ravet     | • <b>Legacy Blends</b> | - Rahatani  |
| • <b>Aqua Mist</b>           | - Ravet     | • <b>Legacy Aspire</b> | - Rahatani  |
| • <b>Hastag</b>              | - Hinjewadi | • <b>Arena 29 A</b>    | - Rahatani  |
| • <b>Millennia A</b>         | - Punawale  | • <b>Arena 29 B</b>    | - Rahatani  |
| • <b>Millennia B</b>         | - Punawale  | • <b>Arena 29 C</b>    | - Rahatani  |
| • <b>Legacy Belezza</b>      | - Wakad     | • <b>Green Aura</b>    | - Ravet     |
| • <b>Legacy Aura</b>         | - Rahatani  |                        |             |

## On-going projects

- |                          |            |                          |             |
|--------------------------|------------|--------------------------|-------------|
| • <b>Millenia A</b>      | - Punawale | • <b>Legacy Eden</b>     | - Tathawade |
| • <b>Legacy Liva</b>     | - Punawale | • <b>Legacy Avenue</b>   | - Wakad     |
| • <b>Legacy-Ivy</b>      | - Punawale | • <b>Legacy Imperial</b> | - Kiwale    |
| • <b>Legacy Celestia</b> | - Wakad    |                          |             |





**‘Now’** is your  
decisive  
moment

Artist's impression for  
representative purpose only.  
Not for sale.





**Lifestyle of the Rising**

Call us @ **8888 77 00 22**



**Legacy Lifespaces**

Office No.406, 4th Floor, Rainbow Plaza,  
Shivar Chowk, Rahatani-411017.

**[presales@legacylifespaces.com](mailto:presales@legacylifespaces.com)**

+91-8888-77-0022  
020-46742000

**[www.legacy-k.in](http://www.legacy-k.in)**