

HAUTÈ  CAPITAL





Welcome to an era of Smart Commercial Spaces built for Smarter Entrepreneurs!

Placed in the buzzing, business-friendly locale of Baner, Bhansali's Hautè Capital features retail and commercial spaces that are smart, convenient, and rewarding! Coupled with the superior and distinctive design mark of Bhansali Group, this ultra-uber commercial complex is located within close proximity to major landmarks and promises nothing but entrepreneurial success.

Come witness the true reflection of smart spaces for smart entrepreneurs in this smart era.

TRUE REFLECTIONS FOR YOUR SPACE





About Bhansali Associates

With over 40 years of experience and 20 lakh square feet of construction, The Bhansali Group has made its mark in the premium real estate business in Pune. With 30 lakh square feet of construction in making, Bhansali associates have contributed to the growth of Pune's Skyline while providing affordable and desirable housing to customers. From residential or commercial projects, we have a prominent presence in Pune areas such as **FC Road, JM Road, Prabhat Road, Law College Road, Apte Road, Ghole Road, Tilak Road, Shashtri Road and Bund Garden among many others.**

Our proficient board of directors consist of civil engineers who understand the promise of delivering projects on and before time.

In addition to the 75 projects, we have strived to provide top-tier quality, relevant and up-to-date constructions that are a sense of refuge and comfort to buyers.



Our Mission

At Bhansali Associates, our mission is to create functionally efficient, best quality, and landmark projects to fulfill the needs of society. We also strive to ensure that our customers and service providers are delighted to deal with us because of our transparent, proactive, assertive, and friendly behavior, coupled with a win-win approach.

The Group always strives to beat deadlines, rather than meeting them through detailed planning, meticulous execution, and optimum technological support with the most stringent wastage control of all the resources: Material, Machinery, Manpower as well as Time.

It's our mission to design, build and market residential and commercial complexes of international quality. We wish to leave no stone unturned to fulfill the dreams of our customers in India & Overseas.

We are deeply committed to achieving new landmarks in property development – not just in Pune but across the India.



Our Vision

Our vision is to become one of the most respected and widely recognized realtors by delivering value through innovation. We consistently envision excellence in service through Customization of documentation Property Management.

Over the years we have built a strong reputation of trust. This trust has arisen as a result of adhering to our commitments and promises not only to our customers but also to our vendors, contractors, consultants, and employees.



Introducing

Hautè Capital

Business-Friendly Retail and Commercial Spaces Located In The Bustling Locale of Baner, Pune.

After years of delivering the most promising projects in the world of real estate, We, at Bhansali Associates are proud to announce an all-new retail and commercial project that is set in the heart of Baner, close to Jupiter Hospital **on 100 ft DP Road.**

At Hautè Capital, smart entrepreneurs have the most high-yielding opportunity to showcase their mantle, thanks to the ease of operating a successful business that's located in an impressive neighborhood that opens up a myriad of business offerings.

Our commercial and retail spaces are equipped with the right amenities and specifications that make running a successful business a whole lot easier. Furthermore, the ease of commuting is a given here at Hautè Capital.

Specifications

The master plan of the Hautè Capital integrates planning, landscape, and architecture, in perfect harmony to create the idyllic 21st-century workplace equipped with the most sought-after specifications.



Concealed Plumbing



POP Plaster to in Internal Walls



Electrical Wing Points



Vitrified Tiles Flooring



RCC Frame Structure



Amenities

Located in a business-friendly neighborhood that offers a multitude of opportunities, Hautè Capital features an exceptional working environment for global and local businesses with well-designed retail and commercial workspaces, enviable connectivity to Baner's hotspots and best-in-class amenities.

A modern, glass-walled conference room with a large wooden table, several black office chairs, and a large screen displaying a Windows logo. The room has a high ceiling with recessed lighting and a view of a city skyline through the glass walls. An orange vertical bar is on the left side of the image.

CRAFTING SPACES WITH VISION



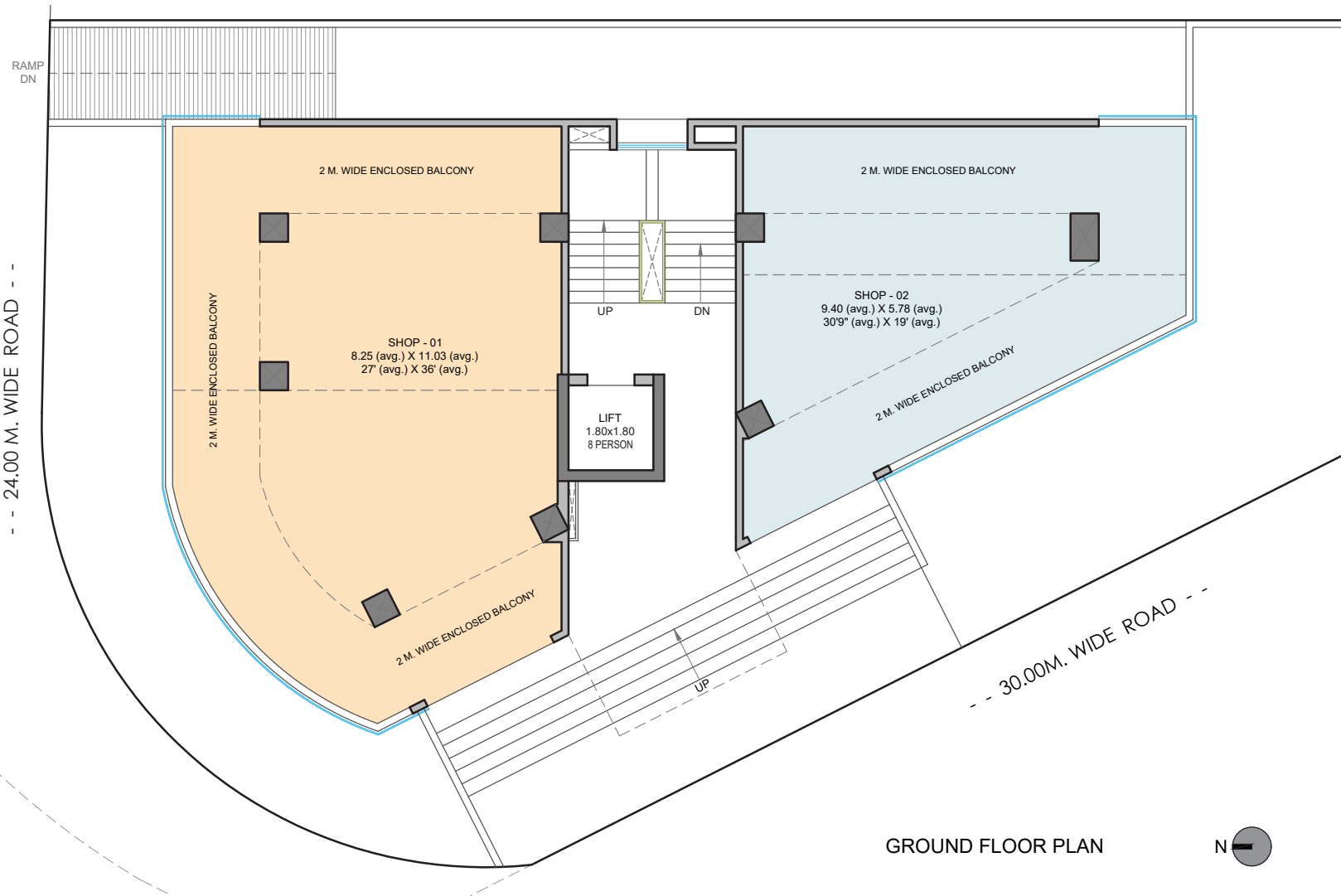
Businesses Made Smarter At Hautè Capital

The Design Supremacy: At Hautè Capital, we've produced a thoughtfully designed commercial ecosystem planned for maximum efficiency & productivity. Our fluidic architecture with impressively designed spaces brings out a more modern approach to each unit, and an it a lot easier to make the commute to work.

An Intuitive Office Space: With flexible layouts for different needs, our thoughtfully designed retail and commercial spaces are perfect for medium-sized companies, boutiques, small operational setups, call centers, etc.

The Ease of Business: Making our units a lot more budget-friendly, we're giving entrepreneurs the opportunity of choosing a smart workspace in order to enhance the ease of operating, commuting, accessibility, and the ease of doing business itself.

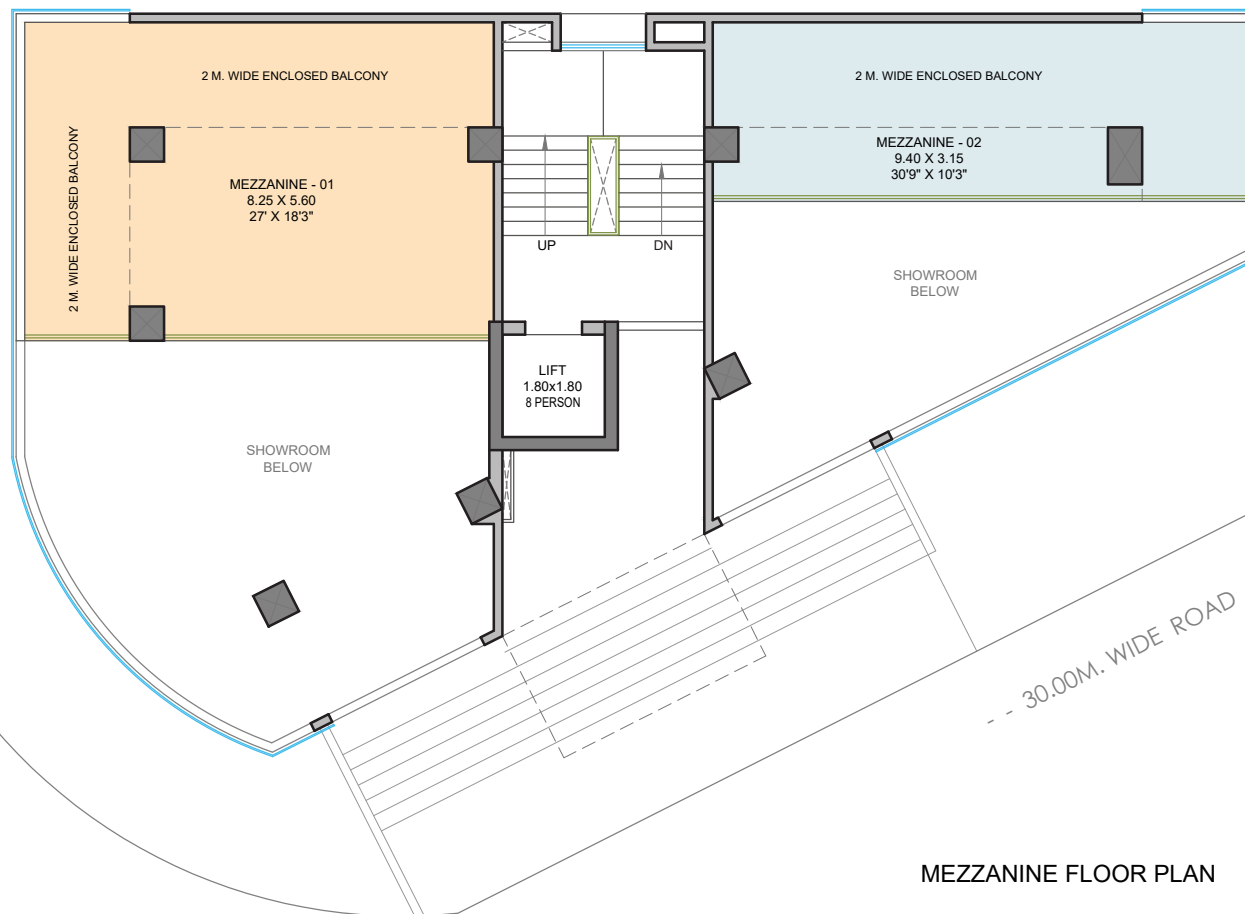
A Location That Steals The Show: With a location as good as this, the geographic economy, accessibility, and future growth of any business placed at Hautè Capital is on put on a fast track towards success. Located near Jupiter Hospital, Baner, the complex is well-connected to the rest of the city.



GROUND FLOOR PLAN



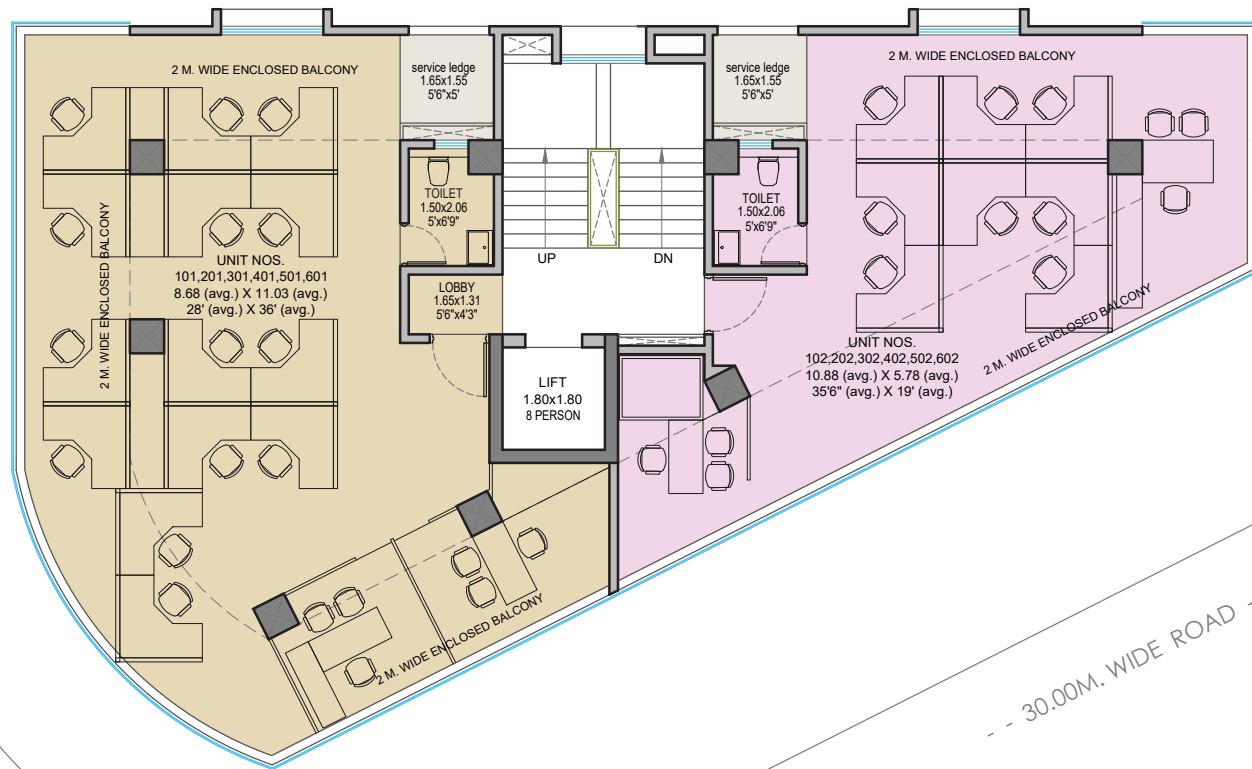
-- 24.00 M. WIDE ROAD --



MEZZANINE FLOOR PLAN

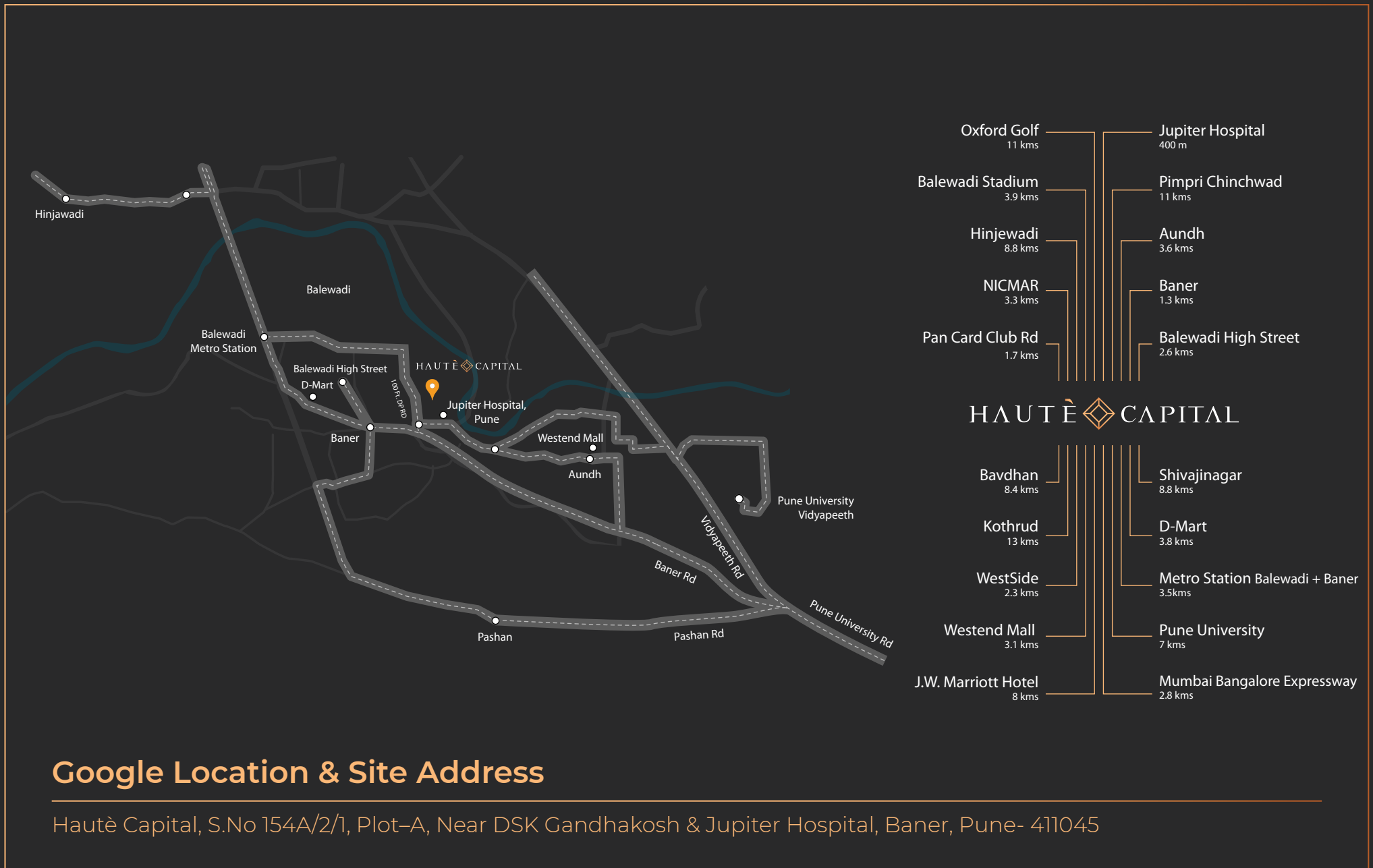


-- 24.00 M. WIDE ROAD --



TYPICAL 1ST TO 6TH FLOOR PLAN






Google Location & Site Address

Hautè Capital, S.No 154A/2/1, Plot-A, Near DSK Gandhakosh & Jupiter Hospital, Baner, Pune- 411045

Our Completed Commercial Project (At Pune Location)



A man in a dark suit, light blue checkered shirt, and dark tie is adjusting his tie. He is standing on a city street with a blurred background showing another person walking. The image is framed by a dark grey border with an orange vertical bar on the right side.


RISE
WITH
AMBITION
ABOVE
ALL

HAUTÈ CAPITAL

Project by



 Bhansali House, 4th Floor, J.M.Road, 1187/61, Shivajinagar, Pune- 05

 020-2553 5425 / 0227

 sales@bhansalis.in

 www.bhansalis.in / www.hautelife.in



The project has been registered via MahaRERA registration number : P52100033854