

Absolute Best In Hinjawadi

eonhomes

MAHARERA No. P52100048176
maharera.mahaonline.gov.in

R-3/1, Near Tech Mahindra,
Hinjawadi Phase III, Pune - 411 057

+91-20-4077 9999

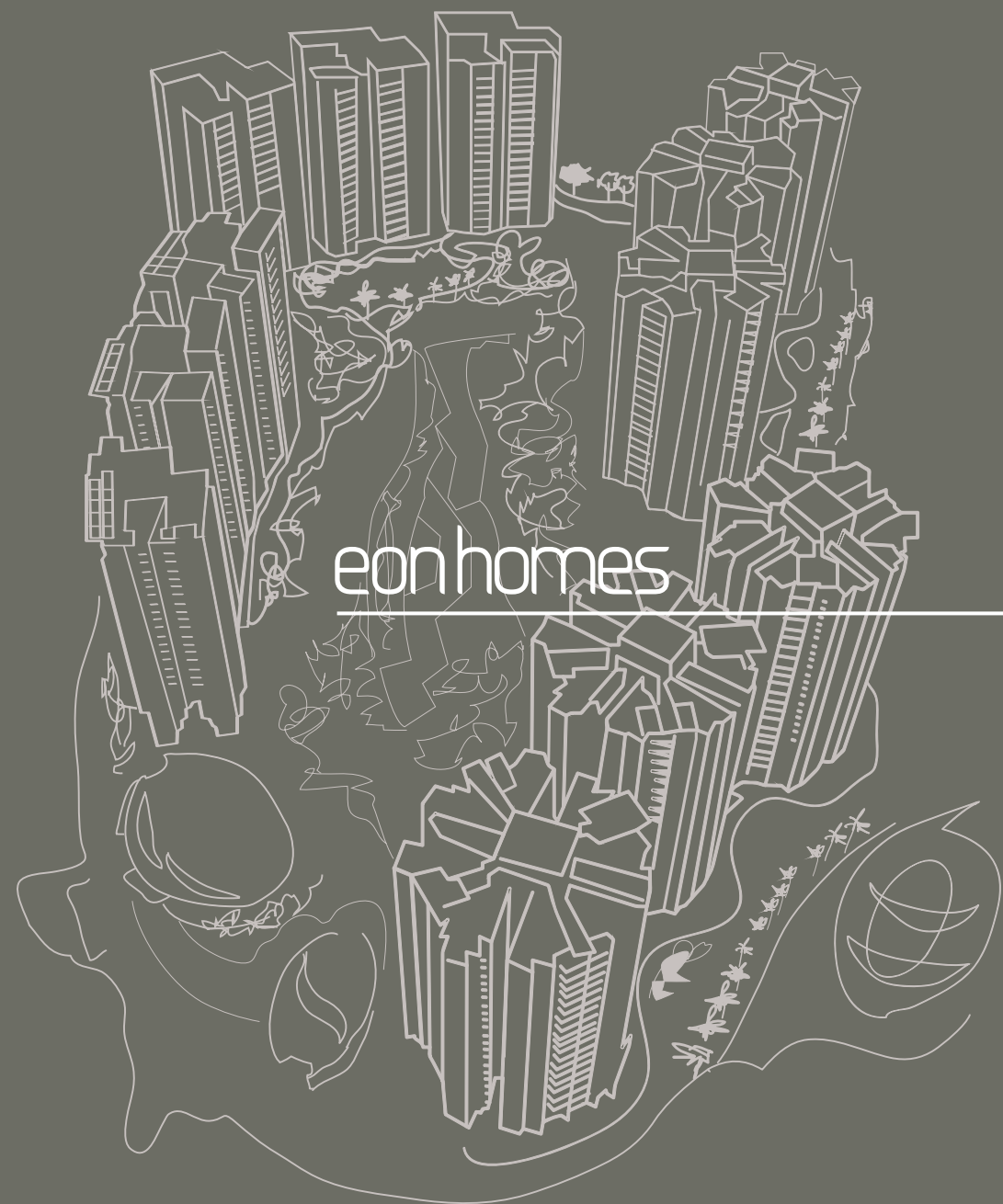
sales@eonhomes.com
www.eonhomes.com

Project by



eonhomes
TOWER - B2

The perspective images in this brochure are Artistic impressions /Schematic representations of the project. No furniture/s or accessories shown in the visuals are provided within the unit/tenement/apartment and is only an indicative of how the unit can be used. This viewer affirms that this viewer has not taken his/her decision to purchase/book by viewing these perspective images in this brochure. The company is not responsible for the action of viewer's booking/purchasing a unit relying on the perspective images in this brochure.



eon homes

HINJAWADI'S MOST VALUABLE CONDOMINIUMS

EON Homes promise the most dramatic
360-degree views imaginable from one of Hinjawadi's highest perches.

Each residence has been meticulously planned,
with gracious layouts, custom details, the finest finishes and the most dynamic views.

DEVELOPMENT OVERVIEW

TOWER B3

TOWER B2

TOWER B1

TOWER C1, C2, C3

TOWER A3

TOWER A2

TOWER A1

CLUBHOUSE

TOWER D1

TOWER D2

TOWER D3

STEP INSIDE
YOUR PRIVATE WORLD

EON HOMES, HNJAWADI PHASE III
22 ACRES | 12 TOWERS | TWO & THREE BEDROOM APARTMENTS

From sweeping views of Hinjawadi and Sahyadri Hills to sophisticated amenities at every turn, EON Homes offer upscale apartment living near the best of Hinjawadi.

The interconnected community living spread over 22 acres feature an array of convenient onsite amenities, including soft and hardscapes, open spaces, central garden, amphitheatre, jogging and cycling track, fitness centre, well-appointed clubhouse and shimmering pools.

EON Homes boast over acres of outdoor areas and exclusive amenities designed by an award-winning landscape architecture firm.

Flourishing gardens and social courtyards invite residents and their guests outside to relax, refresh and socialize in the ultimate urban oasis.

LOCATION

IN THE HEART OF
WHAT'S HAPPENING

GOOGLE MAP COORDINATES : **+18.578284** | **+73.688659**

Uptown Hinjawadi Phase III is a thriving, highly diverse neighbourhood with lively culture, global IT giants, upscale residences, fantastic shopping, entertainment, and dining.

All beckoning, imploring you to get up, get out, and enjoy one of the friendliest and most vibrant neighbourhood scenes in the city.

EON Homes is easily accessible from the Mumbai-Pune Expressway, through approach roads via Baner and Wakad.





PERFECT UNION OF SPACE PLANNING AND
MODERN DAY COMFORTS

Contemporary towers that stand tall against a backdrop of green hills create the perfect setting for your EON Home.

A lush landscape inspired by free-flowing lines in nature integrated with the architectural geometry perfectly complements the towers.

This project is a landmark development in the neighbourhood. Its contemporary facade and Interior spaces are uniquely angled to maximize light and the spectacular city and open views on all sides.



Architectural Rendition

LEGACY OF
CREATING FINEST HOMES

EON Homes come with a lineage of some of the finest names in the real estate development in Pune. Kasturi - who have given Pune fine landmark residences.

At EON Homes, we have put together the best talent in the industry to craft what would be a lifestyle par excellence in Hinjawadi. With consultants from across the globe working in sync to create an environment of bliss, you can rest assured that you will spend a lifetime of happiness at your EON Home.

CENTRAL LANDSCAPE COURTYARD



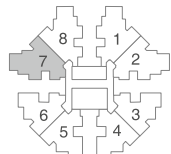
Architectural Rendition

NOTHING LESS THAN INFINITE THINGS TO DO

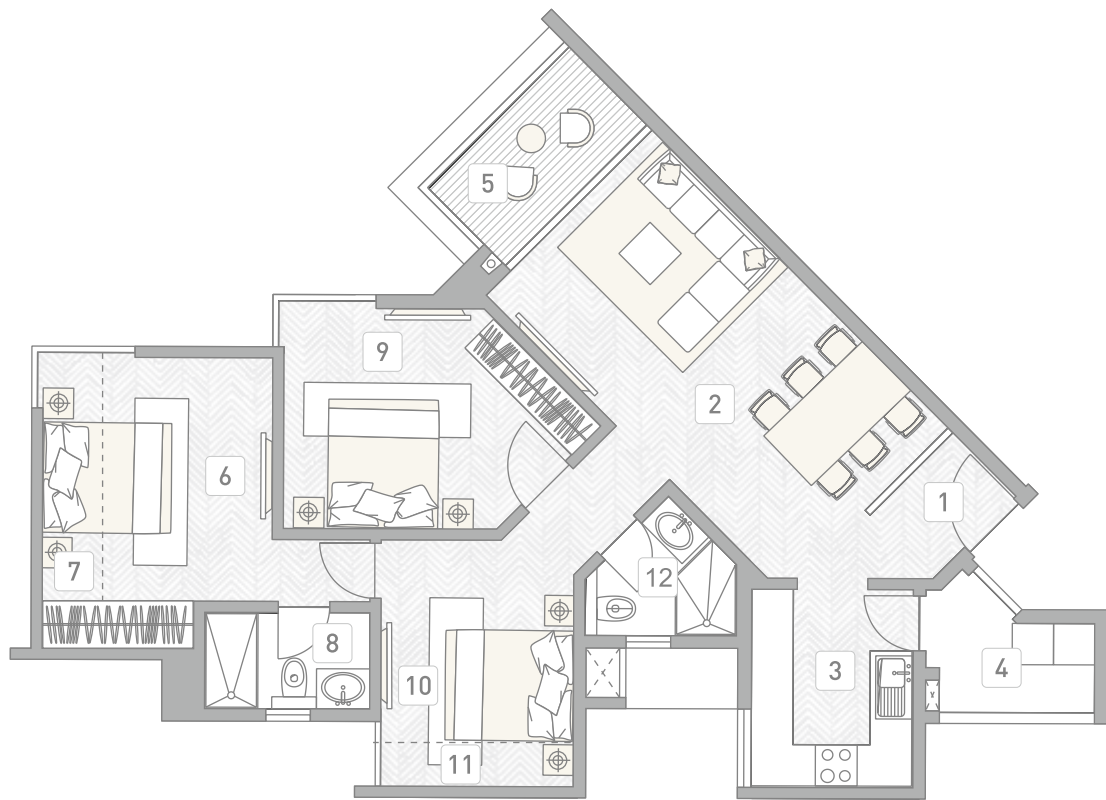
Step into your own exclusive green space that spans over an acre. Encompassing uniquely landscaped areas with amenities the whole family can enjoy, the garden offers an unprecedented opportunity to connect with nature right here in Hinjawadi.

The attention to detail carries throughout the outdoor amenities.

TYPICAL 3 BHK MINI COMFORT



TOWER B2



- 1

Lobby 1.70 x 1.30 meter
- 2

Living Room 3.40 x 6.10 meter
- 3

Kitchen 2.93 x 2.35 meter
- 4

Service Balcony 1.36 x 1.27 meter
- 5

Balcony 2.90 x 1.59 meter
- 6

Room One 4.23 x 2.54 meter
- 7

Enclosed Balcony 4.23 x 1.00 meter
- 8

Toilet One 1.44 x 2.35 meter
- 9

Room Two 3.20 x 4.61 meter
- 10

Room Three 2.78 x 2.80 meter
- 11

Enclosed Balcony 1.00 x 2.80 meter
- 12

Toilet Two 2.03 x 2.21 meter

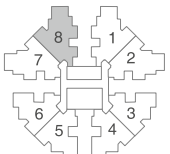
Carpet Area (in Sq.Mtr.)

Flat Area	Balcony / Terrace
76.29	12.70

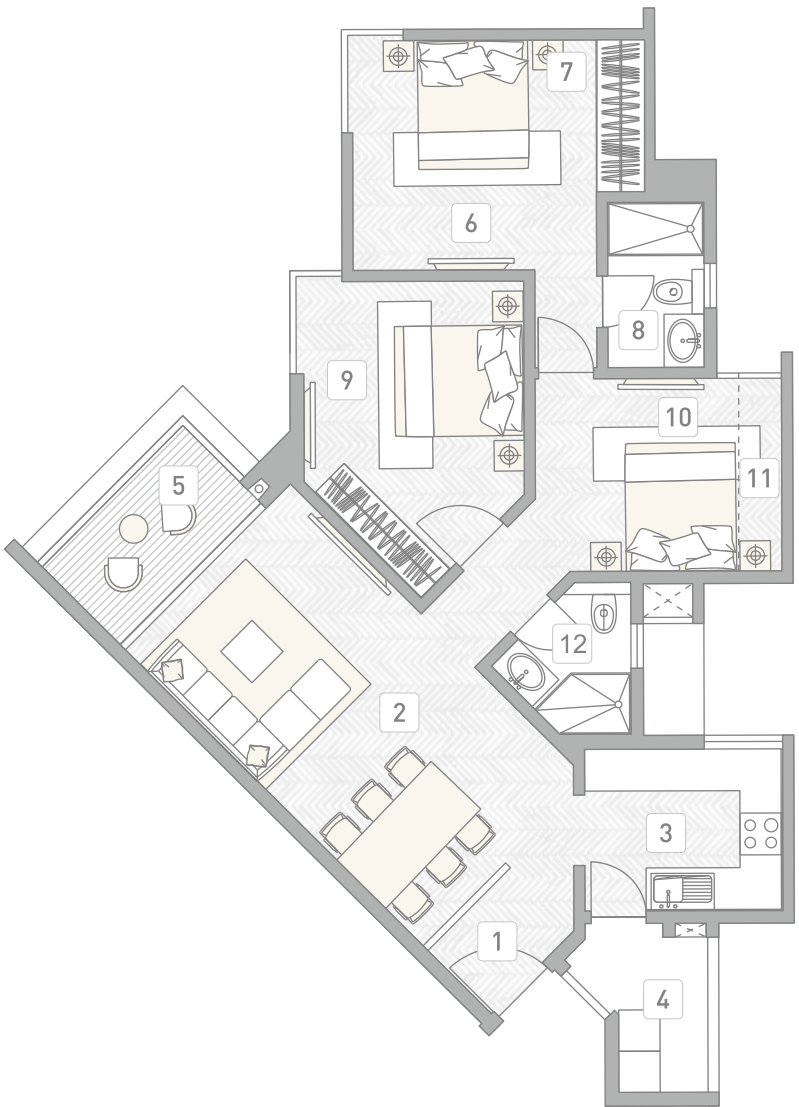
*Area mentioned above is approximate carpet area as per RERA



TYPICAL 3 BHK MINI COMFORT



TOWER B2



- 1

Lobby 1.70 x 1.30 meter
- 2

Living Room 3.40 x 6.10 meter
- 3

Kitchen 2.93 x 2.35 meter
- 4

Service Balcony 2.26 x 1.30 meter
- 5

Balcony 2.90 x 1.59 meter
- 6

Room One 4.23 x 2.54 meter
- 7

Enclosed Balcony 4.23 x 1.00 meter
- 8

Toilet One 1.44 x 2.35 meter
- 9

Room Two 3.20 x 4.61 meter
- 10

Room Three 2.78 x 2.80 meter
- 11

Enclosed Balcony 1.00 x 2.80 meter
- 12

Toilet Two 2.03 x 2.21 meter

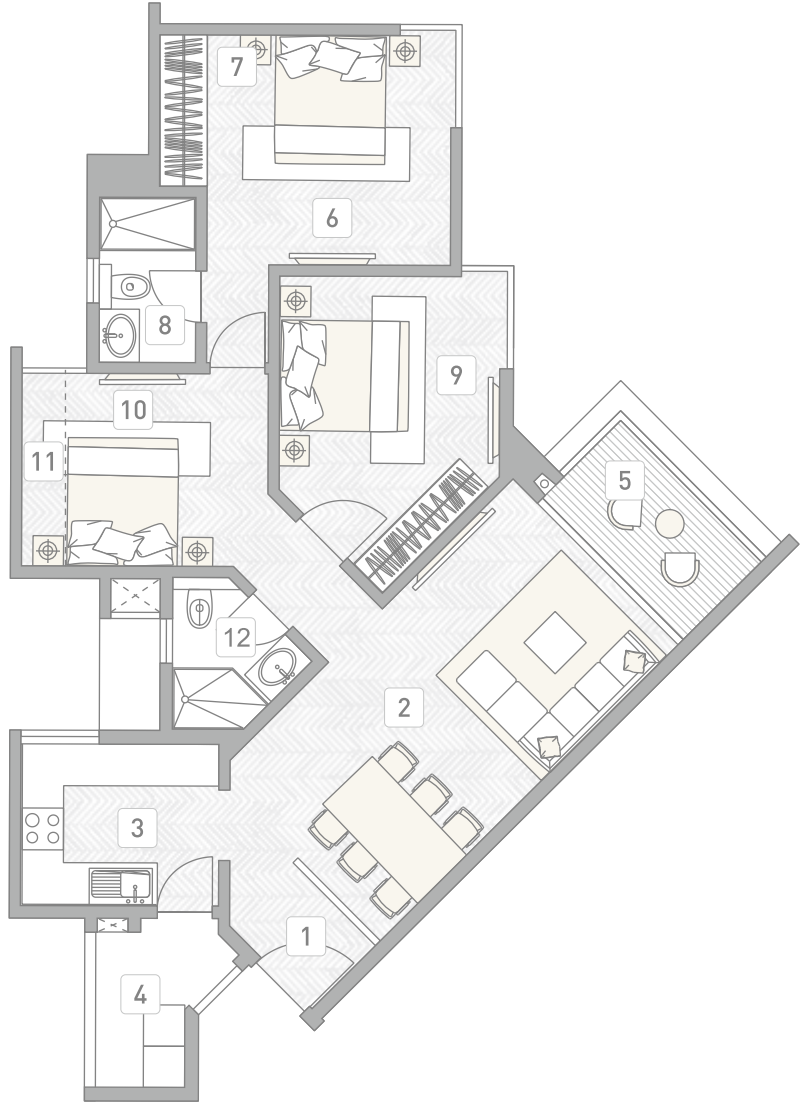
Carpet Area (in Sq.Mtr.)

Flat Area	Balcony / Terrace
76.29	14.13

*Area mentioned above is approximate carpet area as per RERA



TYPICAL 3 BHK MINI COMFORT



- 1 Lobby 1.70 x 1.30 meter
- 2 Living Room 3.40 x 6.10 meter
- 3 Kitchen 2.93 x 2.35 meter
- 4 Service Balcony 2.26 x 1.30 meter
- 5 Balcony 2.90 x 1.59 meter
- 6 Room One 4.23 x 2.54 meter

- 7 Enclosed Balcony 4.23 x 1.00 meter
- 8 Toilet One 1.44 x 2.35 meter
- 9 Room Two 3.20 x 4.61 meter
- 10 Room Three 2.78 x 2.80 meter
- 11 Enclosed Balcony 1.00 x 2.80 meter
- 12 Toilet Two 2.03 x 2.21 meter

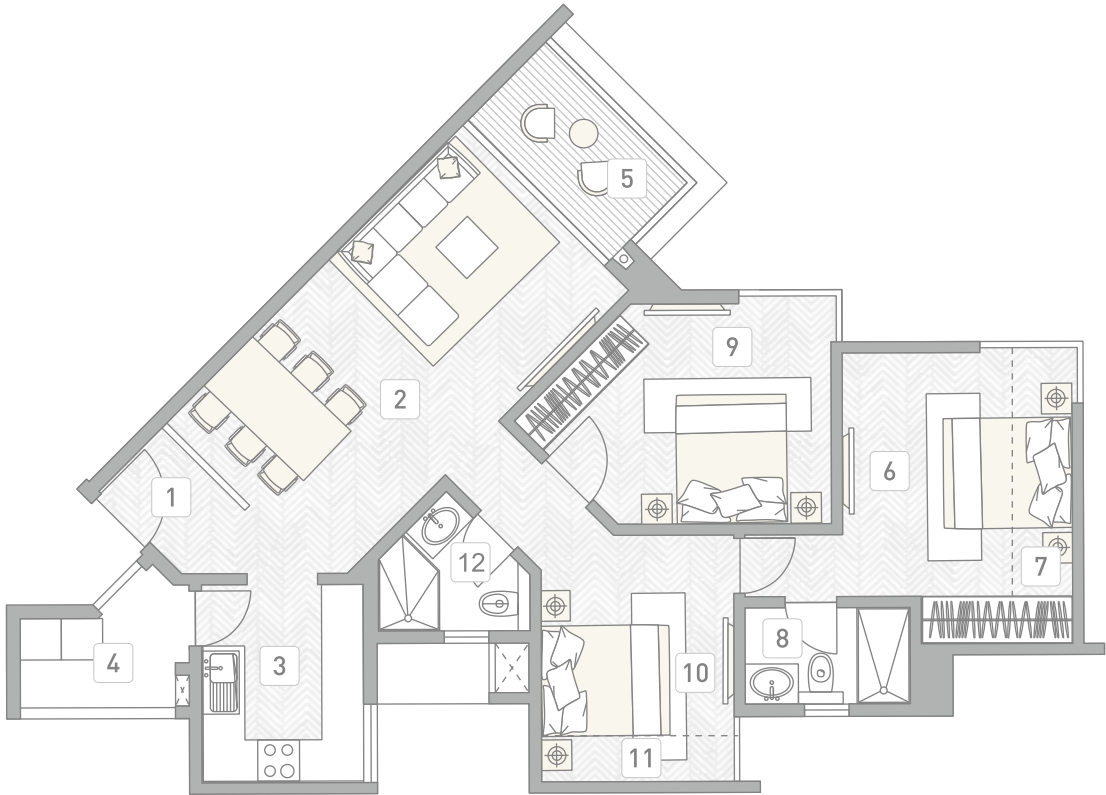


Carpet Area (in Sq.Mtr.)

Flat Area	Balcony / Terrace
76.29	14.13

*Area mentioned above is approximate carpet area as per RERA

TYPICAL 3 BHK MINI COMFORT



- 1 Lobby 1.70 x 1.30 meter
- 2 Living Room 3.40 x 6.10 meter
- 3 Kitchen 2.93 x 2.35 meter
- 4 Service Balcony 1.36 x 1.27 meter
- 5 Balcony 2.90 x 1.59 meter
- 6 Room One 4.23 x 2.54 meter

- 7 Enclosed Balcony 4.23 x 1.00 meter
- 8 Toilet One 1.44 x 2.35 meter
- 9 Room Two 3.20 x 4.61 meter
- 10 Room Three 2.78 x 2.80 meter
- 11 Enclosed Balcony 1.00 x 2.80 meter
- 12 Toilet Two 2.03 x 2.21 meter

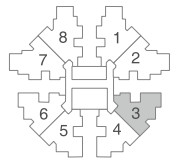


Carpet Area (in Sq.Mtr.)

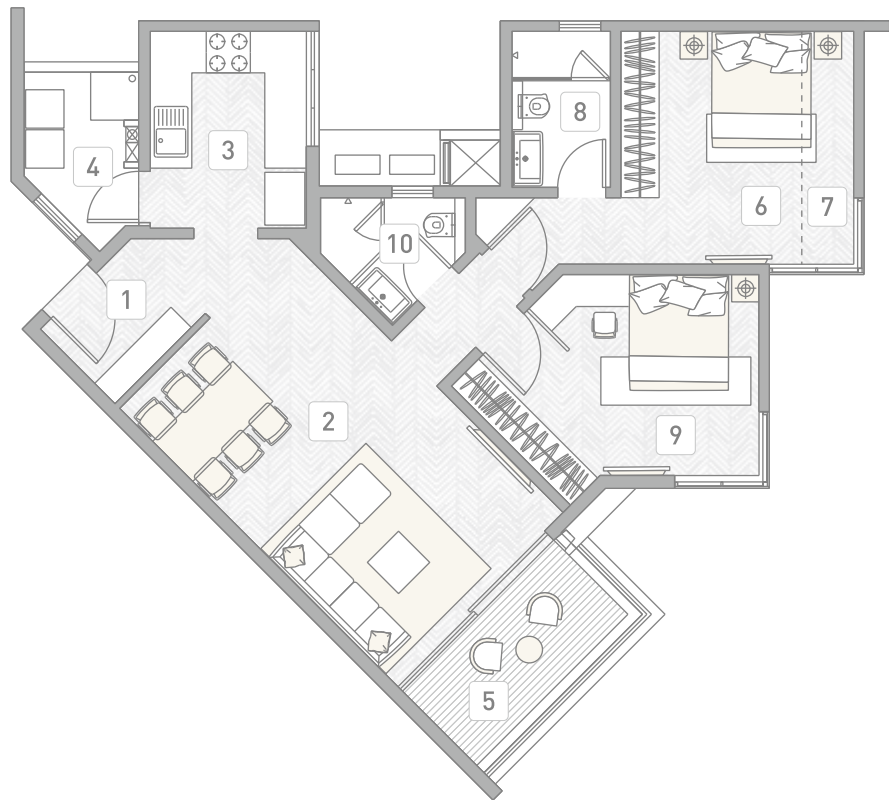
Flat Area	Balcony / Terrace
76.29	12.70

*Area mentioned above is approximate carpet area as per RERA

TYPICAL 2 BHK COMFORT



TOWER B2



- 1

Lobby 1.70 x 1.30 meter
- 2

Living Room 3.30 x 5.90 meter
- 3

Kitchen 2.44 x 2.95 meter
- 4

Service Balcony 1.13 x 1.17 meter
- 5

Balcony 2.90 x 1.60 meter
- 6

Room One 2.84 x 3.50 meter
- 7

Enclosed Balcony 1.00 x 3.81 meter
- 8

Toilet One 1.60 x 2.50 meter
- 9

Room Two 2.90 x 4.67 meter
- 10

Toilet Two 2.07 x 2.81 meter

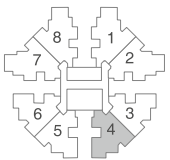


Carpet Area (in Sq.Mtr.)

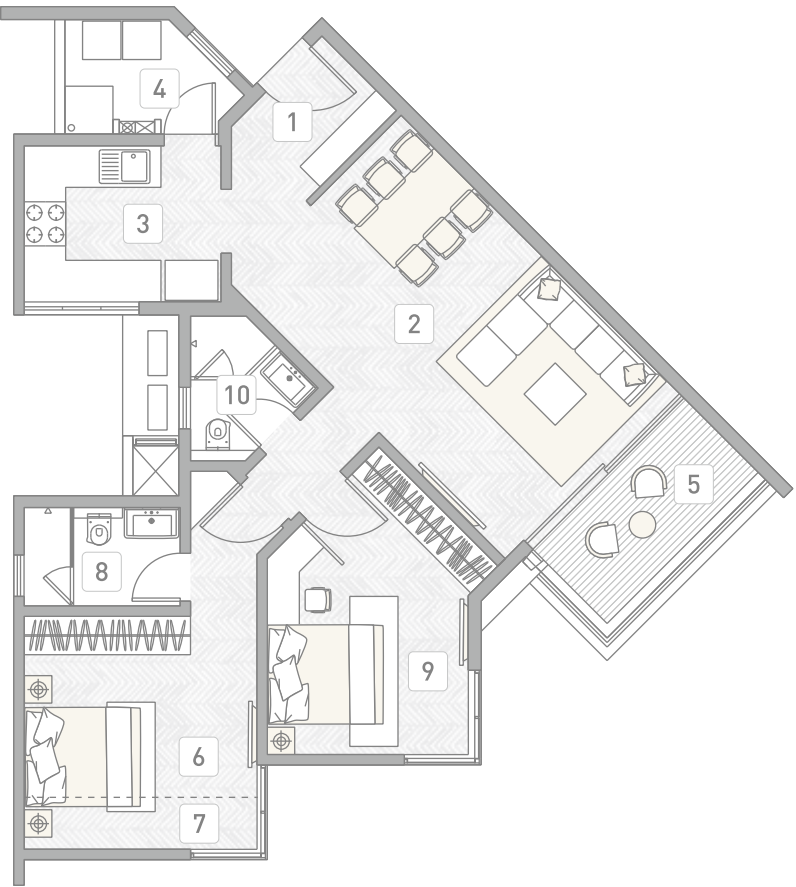
Flat Area	Balcony / Terrace
68.20	9.45

*Area mentioned above is approximate carpet area as per RERA

TYPICAL 2 BHK COMFORT



TOWER B2



- 1

Lobby 1.70 x 1.30 meter
- 2

Living Room 3.30 x 5.90 meter
- 3

Kitchen 2.44 x 2.95 meter
- 4

Service Balcony 1.46 x 1.37 meter
- 5

Balcony 2.90 x 1.60 meter
- 6

Room One 2.84 x 3.50 meter
- 7

Enclosed Balcony 1.00 x 3.81 meter
- 8

Toilet One 1.60 x 2.50 meter
- 9

Room Two 2.90 x 4.67 meter
- 10

Toilet Two 2.07 x 2.81 meter

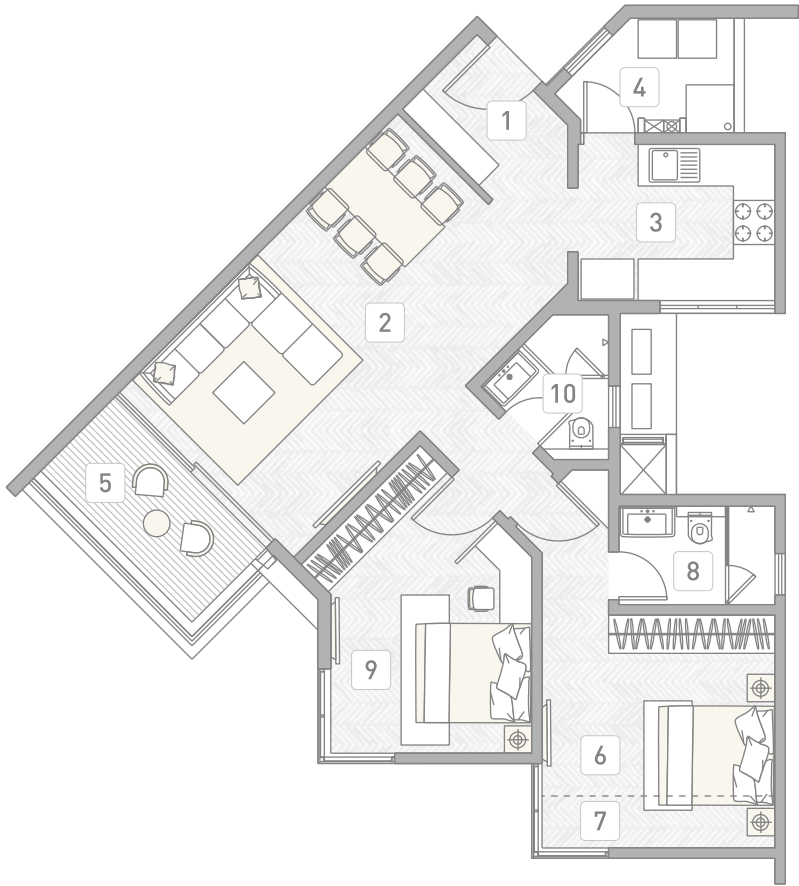


Carpet Area (in Sq.Mtr.)

Flat Area	Balcony / Terrace
68.20	9.78

*Area mentioned above is approximate carpet area as per RERA

TYPICAL 2 BHK COMFORT



- 1

Lobby 1.70 x 1.30 meter
- 2

Living Room 3.30 x 5.90 meter
- 3

Kitchen 2.44 x 2.95 meter
- 4

Service Balcony 1.46 x 1.37 meter
- 5

Balcony 2.90 x 1.60 meter
- 6

Room One 2.84 x 3.50 meter
- 7

Enclosed Balcony 1.00 x 3.81 meter
- 8

Toilet One 1.60 x 2.50 meter
- 9

Room Two 2.90 x 4.67 meter
- 10

Toilet Two 2.07 x 2.81 meter

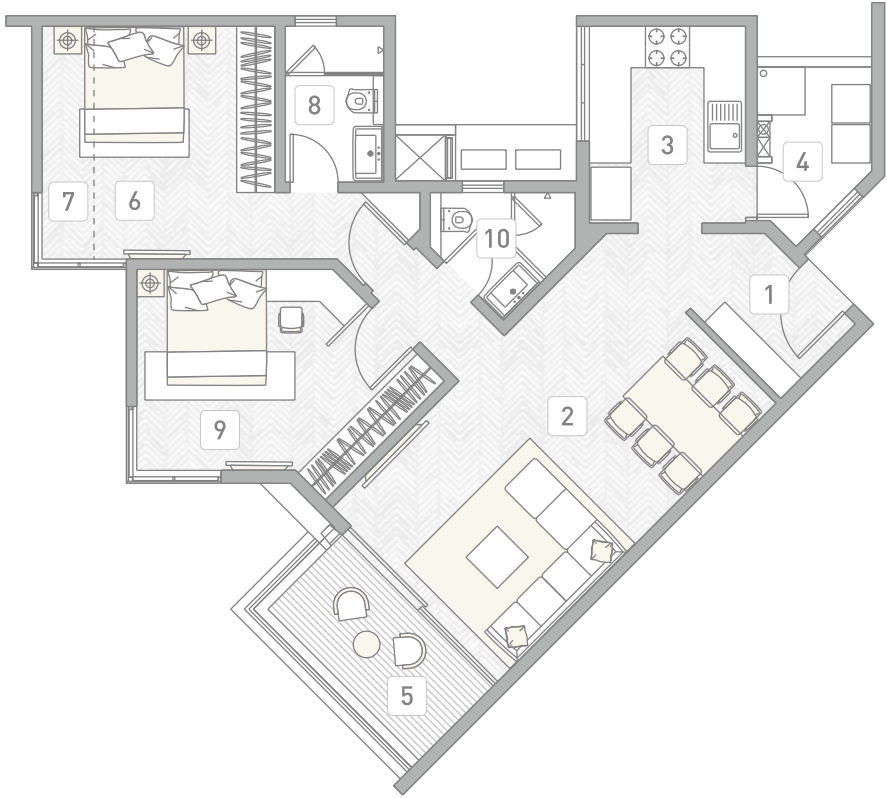


Carpet Area (in Sq.Mtr.)

Flat Area	Balcony / Terrace
68.20	9.78

*Area mentioned above is approximate carpet area as per RERA

TYPICAL 2 BHK COMFORT



- 1

Lobby 1.70 x 1.30 meter
- 2

Living Room 3.30 x 5.90 meter
- 3

Kitchen 2.44 x 2.95 meter
- 4

Service Balcony 1.13 x 1.17 meter
- 5

Balcony 2.90 x 1.60 meter
- 6

Room One 2.84 x 3.50 meter
- 7

Enclosed Balcony 1.00 x 3.81 meter
- 8

Toilet One 1.60 x 2.50 meter
- 9

Room Two 2.90 x 4.67 meter
- 10

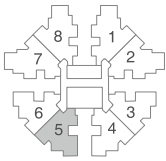
Toilet Two 2.07 x 2.81 meter



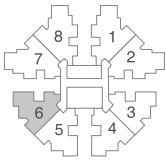
Carpet Area (in Sq.Mtr.)

Flat Area	Balcony / Terrace
68.20	9.45

*Area mentioned above is approximate carpet area as per RERA



TOWER B2



TOWER B2



Actual Show Suite Picture

INTERIORS THAT FEEL
LIKE HOME



All residences boast warm and modern interiors. Combining function, quality and style, it's the details that set these homes apart: high-end fittings, impeccable finishes and perfect space planning.

With an open-concept layout enhanced by floor-to-ceiling windows and stunning skyline views, it truly feels like you're on top of the world—and you are.

LARGE ATTACHED BALCONY AND SIT-OUT SPACES.

POLISHED PORCELAIN FLOORING

ALUMINIUM SLIDING DOORS AND WINDOWS

BRANDED ELECTRICAL FITTINGS

FALSE CEILING WITH CONCEALED LIGHTING

VENNER MELAMINE POLISHED DOORS WITH GERMAN HARDWARE



Actual Show Suite Picture



YOUR SPACE FOR
CULINARY JOY

Whether you believe that the kitchen is the heart of the home or not, you can't deny that it is a hub of activity. From cooking up our favourite meals and learning to bake with mum to doing homework with our children, hosting and entertaining friends, and using it as a place to converse over a steaming cup of tea. The kitchen is undoubtedly the most used room in the home and a place full of memories.

FULLY FURNISHED MODULAR KITCHEN WITH HOB, CHIMNEY AND WATER PURIFIER

WELL DESIGNED UTILITY AREA WITH PROVISION FOR WASHING MACHINE/DISHWASHER AND STORAGE SPACE

PIPED GAS CONNECTION



Actual Show Suite Picture

YOUR FAVOURITE
SPACE IN HOUSE FOR “ME-TIME”



While laying the bedrooms, we have ensured it reflects your style; incorporates your favourite materials, colours, and patterns; shines the right light; and maximizes space.

It is your favourite space in your home. After all, where else do you get to be yourself, completely and absolutely?

AIR CONDITIONING IN TWO BEDROOMS BY
DAIKIN, JAPAN

FULL HEIGHT CORNER WINDOWS FOR SUPERIOR LIGHT,
VENTILATION AND VIEWS

BATHROOM



SHOWER
YOUR STRESS AWAY



We all spend a lot of time in our bathrooms, so it's only right that we made them into a simply gorgeous place to be.

Your bathrooms at EON Homes comes fitted with shower cubicles, sleek vanity units and modern toilet designs to suit your style that features stunning sanitaryware, faucets, bathroom accessories and perfect lighting.

FULLY FURNISHED BATHROOMS INCLUDING BATH ACCESSORIES, SHOWER CUBICLES AND EXHAUST SYSTEMS

INTERNATIONAL BATHROOM FITTINGS AND FIXTURES

GERMAN PLUMBING SYSTEMS AND BATHROOM FITTINGS

SOLAR WATER HEATING SUYSTEM IN ALL BATHROOMS

ALUMINIUM FALSE CEILING SYSTEMS



Actual Show Suite Picture



Images for Representational Purpose Only

CLUBHOUSE

ENDLESS OPTIONS FOR AFTER-HOURS ENTERTAINMENT, RECREATION, MOVIE THEATRE, SPORTS BAR AND SNOOKER ROOM — JUST A FEW OF THE STYLISH SETTINGS FOR SOCIAL OCCASIONS YOU AND YOUR GUESTS WILL NEVER FORGET.

A WORLD OF PRIVATE AMENITIES AT YOUR DOORSTEP

With over every conceivable luxury, EON Homes recreational amenities are designed for getting the most out of every day, with more than plenty to do for the whole family.

- GYMNASIUM
- LAP POOL AND KIDS POOL
- EXECUTIVE FLEXIBLE WORKSPACE
- BADMINTON COURT
- SQUASH COURT
- SPORTS BAR WITH BILLIARDS ROOM
- AEROBICS/MEDITATION ROOM
- CINEMA THEATRE
- BANQUET HALL
- CAFETERIA

BASE BUILDING SPECIFICS

As a developer committed to continuously enhancing your living experiences, and security concerns, we spare no effort when it comes to the quality and detailing.

Experience a lifestyle that is the epitome of plush refinement.

UTILITIES

- Four high-speed auto elevators, including a stretcher elevator in Zone B
- 100% power back-up common areas & 1 KVA for apartments
- More than 2000* car parks below podium level
- Drivers' lounge and washrooms
- Sewage treatment plant
- Rainwater harvesting
- Ramps for the specially-abled
- Garbage chute

SAFETY

- International safety standards
- Multi-layered manual and electronic security
- Video door phone facility
- Video surveillance for the entire complex
- Fire fighting system

A close-up photograph of a woman's hands, wearing a grey sleeveless top, with her fingers interlaced to form a heart shape. The background is a soft, out-of-focus grey.

KASTURI CARE
Passion That Brings Absolute Care With It.

HOME CARE

Home Care keeps our commitment even after completing our creations. Our team at Home Care takes utmost care in nurturing your home even when you are not around. Under this, we provide maintenance services which include plumbing, electrical, painting and carpentry. Additionally, Home Care also offers services of seeking the appropriate customer for renting out your apartment, including all legal services required for leave and licence agreements.

We always become a part of what we build, and Kasturi's Home Care system keeps our commitment after that. Home Care provides our homeowners with a list of services that nurture their apartments, even when they are not at home.

We make sure that a like-minded community shares our passion. Hence, we also go to lengths to find them. Home Care offers such services as seeking the appropriate tenant for renting out our clients apartments. We believe that your home is not just your investment, but our responsibility too.

Our creations are not just buildings; they are beings that we always treat humanely. This is why we take utmost care in nurturing them in every way. Home Care has an array of systems designed solely for the regular overall maintenance of the projects we create.



Often deemed as one of the finest luxury real estate brands in Pune, Kasturi Housing is a name that promises nothing but the very best. Founded in 1999, it has successfully delivered over 2 million square feet of prime real estate and is developing another 2 million square feet for residential purposes. Our portfolio comprises highly luxurious and mid-segment living spaces and commercial developments such as IT buildings and built-to-suit workspaces.

Our landmark projects include:

THE BALMORAL ESTATE

Tucked amidst the swanky and sophisticated location of Baner, Pune, The balmoral estate is a collection of high-end luxury residences that now command the highest rate in western Pune and the highest rent per square feet in Pune.

ZERO-ONE

Home to Pune's passport office, leading IT companies, and numerous select F&B outlets – Zero-one is the one-stop destination that allows you to enjoy the benefits of an exclusive commercial&IT zone.

APOSTROPHE

A mid-segment residential development in Wakad, Pune, Apostrophe is well-known for the futuristic and international lifestyle. Decked with superior detailing and high—quality finishes, Apostrophe is pristine in every way.

EON HOMES

Absolute Best in Hinjawadi, Now Awarded India's Best. Set on a verdant 22 acres Campus at one of the most scenic locations in Hinjawadi, Phase III. This is a well-planned community of 12 Towers, with spacious and contemporarily designed apartments on each floor.

Eon Homes is a premium mid-segment residential development by Kasturi Housing. International Architects have designed the Development.



AWARDS & RECOGNITION

Celebrating our noteworthy accomplishments in the real estate sector, the Realty Plus Conclave and Excellence Awards, and the International Property Awards honoured Kasturi's capability and competence of providing the finest properties to our customers in the year 2017 and 2018, respectively. These awards are the testimonials of our hard work, and our aim to always be the best.



