



*More of life  
More of lifestyle*

# SUN, AIR, SPACE HOME



IMAGE ONLY FOR REPRESENTATION PURPOSE

A TIME TO EXPERIENCE  
AN EVOLVED WAY OF LIVING

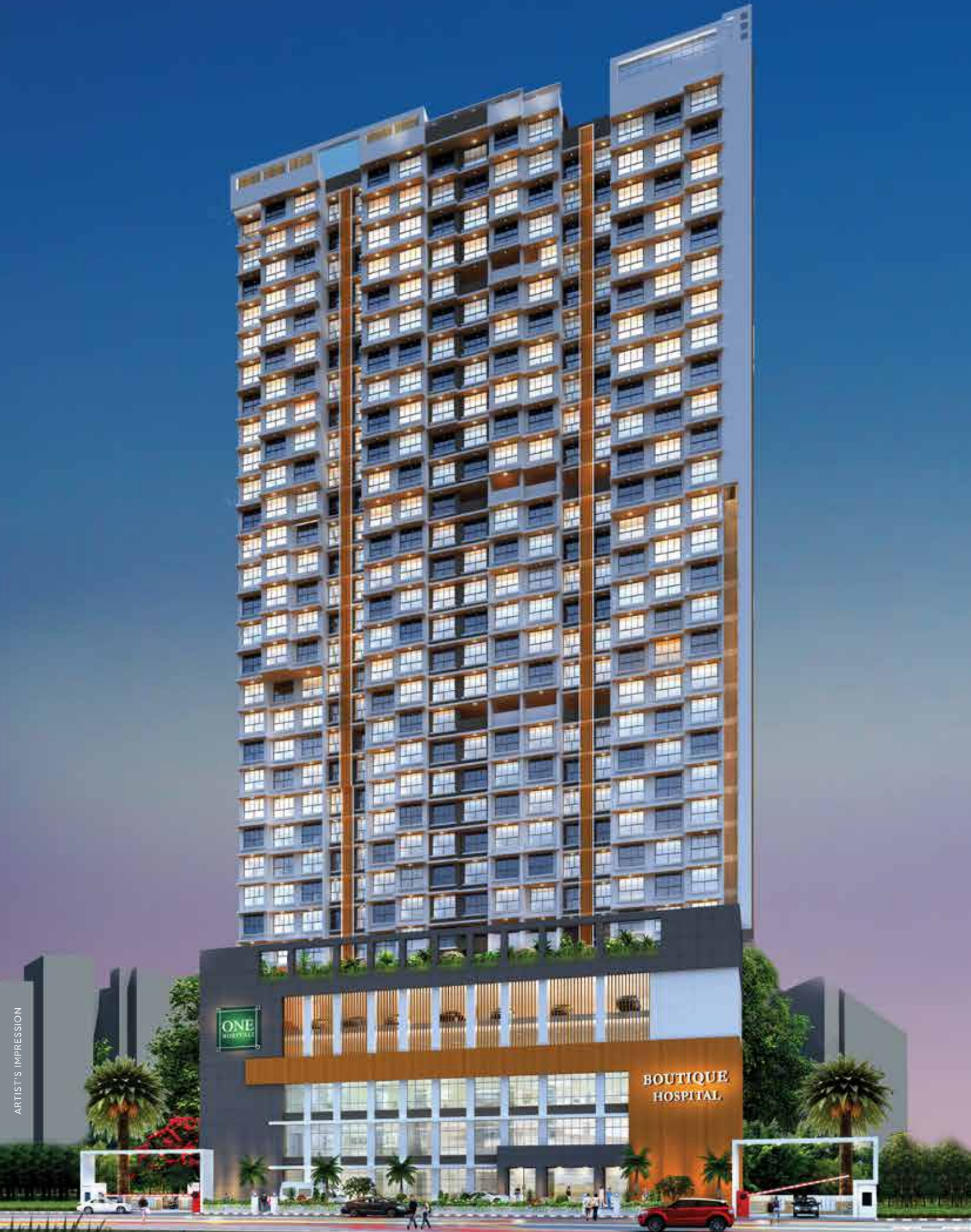
MORE IDEAS  
OF LIFE

AN OPPORTUNITY THAT WAS UNTHINKABLE

PRESENTING



**OSHO** Developers



# EXPERIENCE A NEW SPACE LIKE NEVER BEFORE

- 2 & 3 BHK Luxury Residences
- 31 Storey Standalone Tower
- Gated Community Living
- State-Of-The-Art Planning
- Zero Wastage
- Double Height Air-conditioned Lobby
- Expansive Lifestyle Amenities
- Excellent Location & Connectivity
- 3 Podium Parking
- Unobstructed view Views of Gorai Hills & City
- Infinity Pool
- Gymnasium
- Mini Theatre
- Children's Play Area
- 100 % Vastu Compliant
- Ample Parking Space



ONE

BOUTIQUE  
HOSPITAL

ARTIST'S IMPRESSION

# BORIVALI, MORE CONNECTED TO CITY & LIFE THAN ANYWHERE ELSE



## LOCATION ADVANTAGE

- Link Road 5 min\*
- Don Bosco Metro Station 5 min\*
- Borivali Railway Station 5 min\*
- Western Express Highway 10 min\*
- Gorai Creek 7 min\*
- Hospitals 5 min\*
- Banks 2 min\*
- Schools & Colleges 5 min\*
- Mall & Entertainment Hub 5 min\*
- Business Hubs 10 min\*
- Airports 40 min\*

\*Timings are subject to traffic conditions

SHOT FROM ACTUAL LOCATION

# EXPERIENCE THE ENDLESS VIEW

LINK ROAD

PAGODA

GORAI

DON BOSCO  
METRO STATION

CLICK HERE TO EXPERIENCE 360° VIEW



A woman with long dark hair, wearing a wide-brimmed tan hat and a grey, long-sleeved, button-up dress with a gathered waist, is sitting outdoors. She is smiling and looking down and to the right. The background is a blurred green landscape with trees and a building in the distance.

MORE  
HAPPINESS  
IN A  
PERFECTLY  
SHAPED WORLD

RECREATION LANDSCAPED



# MORE OF JOY & HEALTH, MORE THAN YOU ALWAYS IMAGINED

1. SWIMMING POOL
2. LANDSCAPED GARDEN WITH SIT-OUTS
3. GREEN WALKWAYS
4. SENIOR CITIZEN CORNER
5. FOUNTAIN
6. GAZEBO

# THE FINEST SPACE TO REBUILD YOURSELF

STATE-OF-THE-ART GYMNASIUM





IMAGE ONLY FOR REPRESENTATION PURPOSE

AN AZURE JOY  
AWAITS YOU

INFINITY SWIMMING POOL



IMAGE ONLY FOR REPRESENTATION PURPOSE

# BE THE ACTIVE & PEACEFUL YOU

YOGA & MEDITATION ZONE

# SPACES FOR THE YOUNG GUNS TO PLAY BIG

KIDS PLAY AREA



# EXPERIENCE STORYTELLING LIKE NEVER BEFORE

MINI THEATRE





ARTIST'S IMPRESSION

# BEAUTY THAT TRANSCENDS DESIRE

E-DECK GARDEN

# FINEST WELCOME THAT CASTS A FIRST IMPRESSION

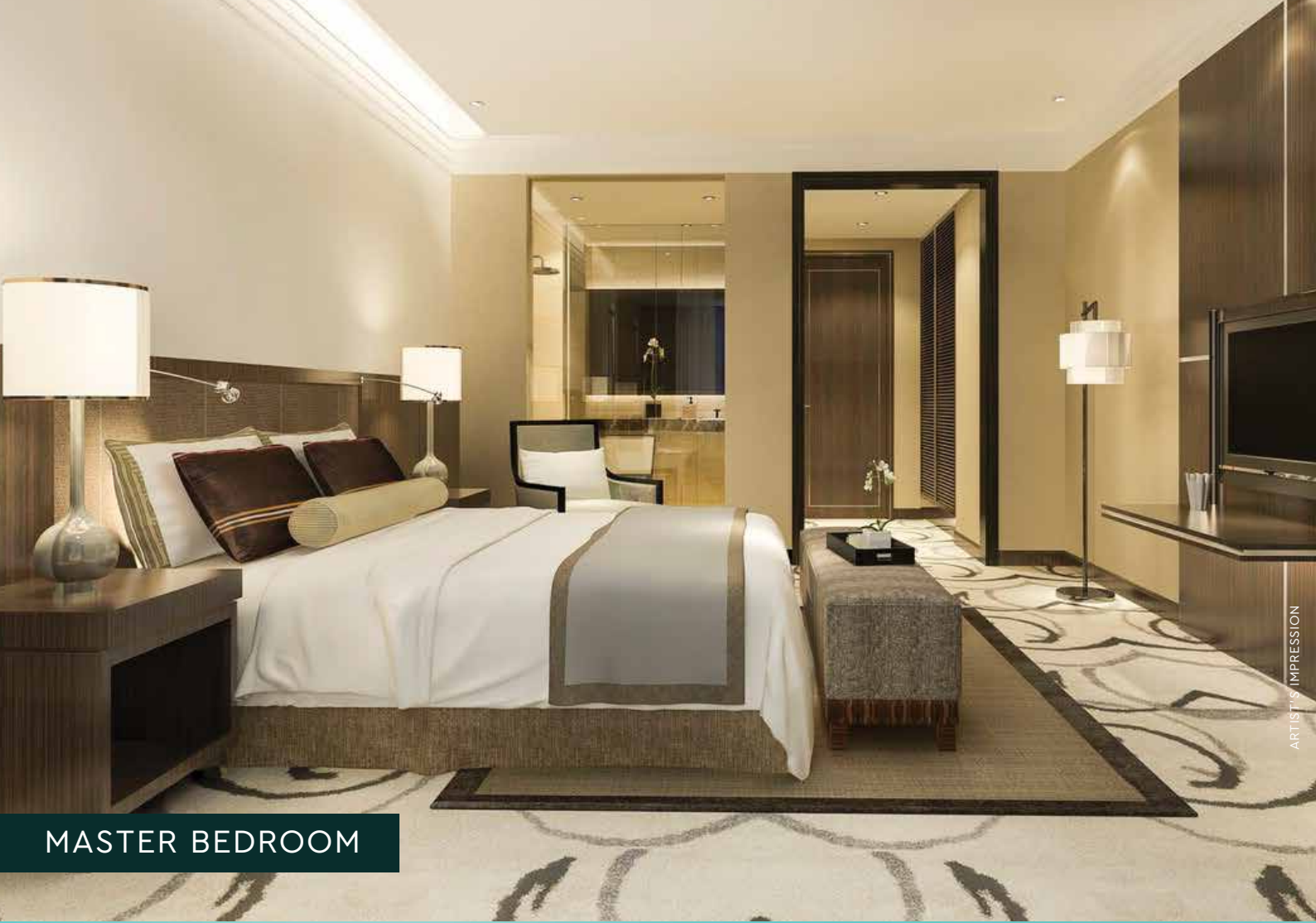
DOUBLE HEIGHT AIR-CONDITIONED  
GRAND ENTRANCE LOBBY



# AVENUE OF FUN, FAMILY & TOGETHERNESS

SPACIOUS VASTU COMPLIANT LIVING SPACES





MASTER BEDROOM

ARTIST'S IMPRESSION



MODERN KITCHEN LAYOUT

ARTIST'S IMPRESSION



BATHROOM

ARTIST'S IMPRESSION



BOUTIQUE HOSPITAL

ARTIST'S IMPRESSION

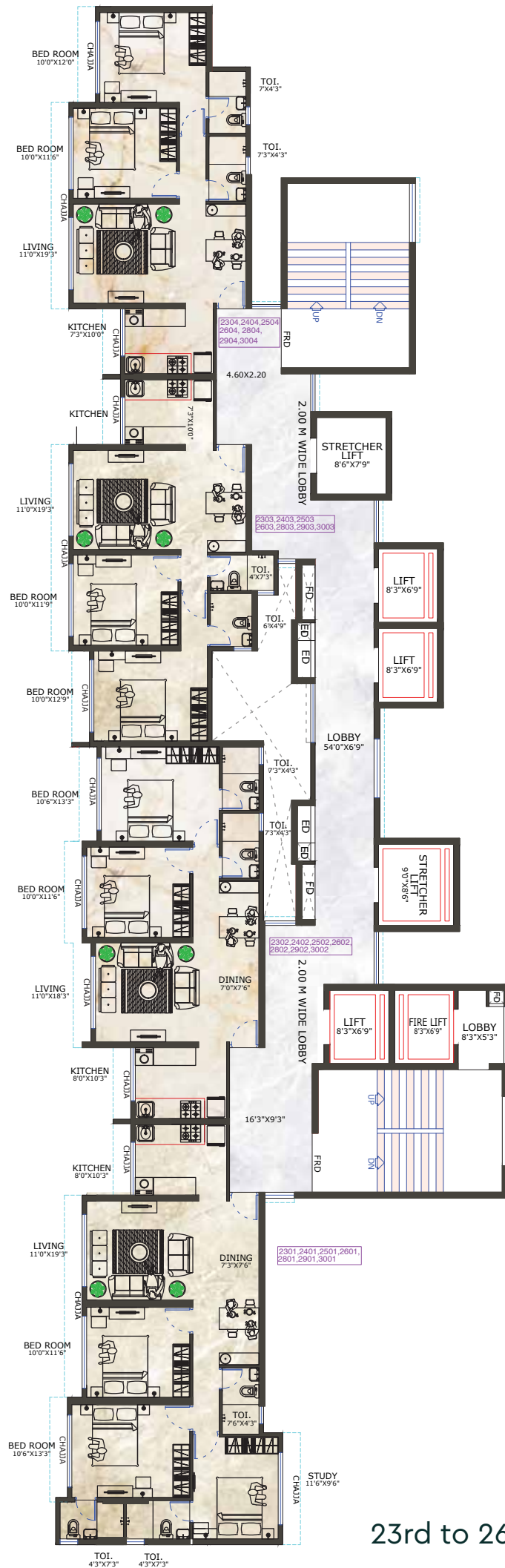




2 BHK  
615 to 870 Sq.ft.

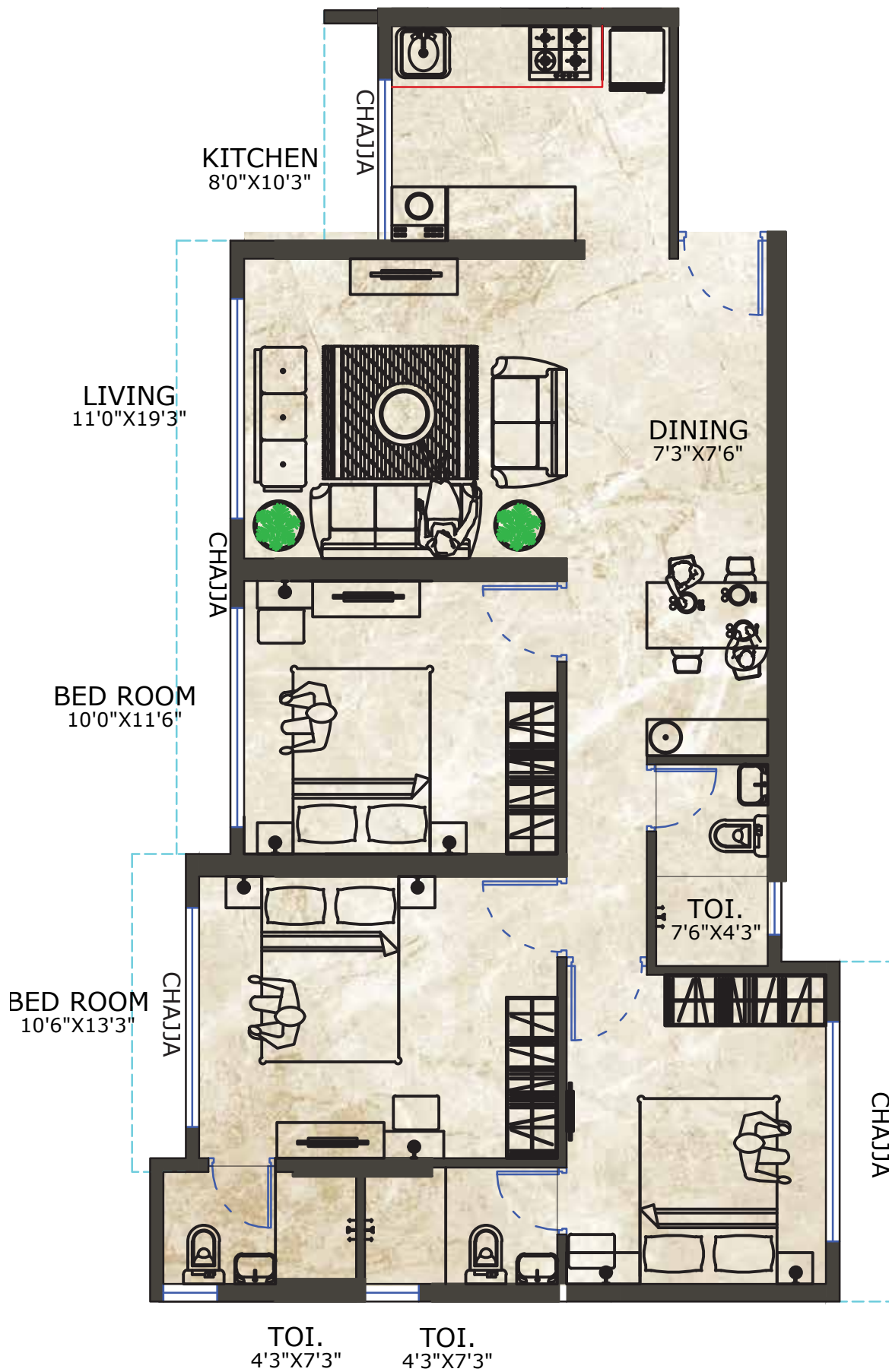


3 BHK  
785 to 1050 Sq.ft.



# FLOOR PLAN

23rd to 26th & 28th to 30th Floor



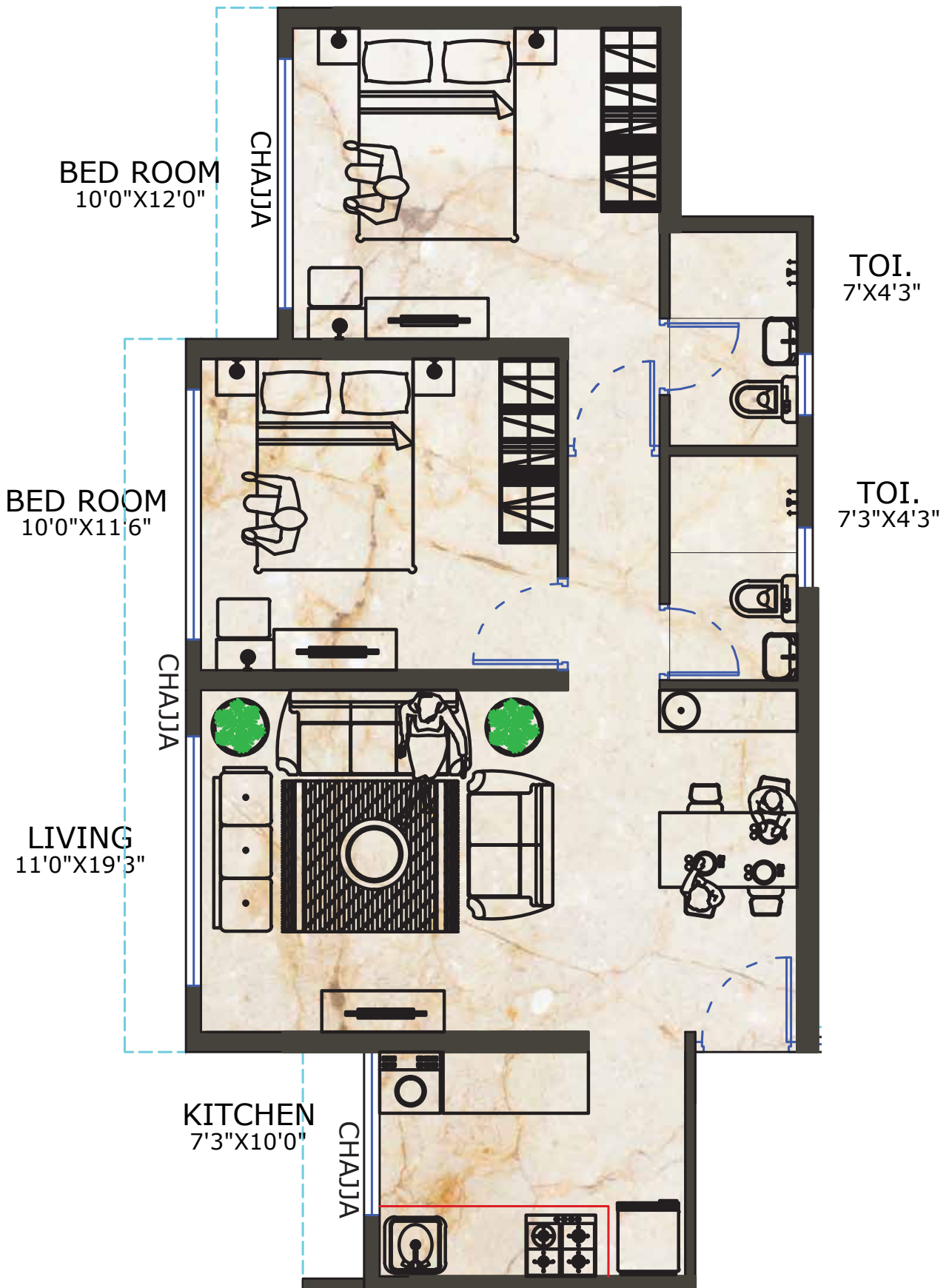
### 3 BHK UNIT PLAN



Flat No.	2001	2501	2601	2701	2801	2901	3001
Areas	785	870	870	1050	870	870	870







2 BHK UNIT PLAN



Flat No.	1704	2504	2604	2704	2804	2904	3004
Areas	615	645	645	645	645	645	645

ARTIST'S IMPRESSION



ONE  
BORIVALI

# SPECIFICATIONS

- Earthquake Resistant Structure
- Environment-friendly Construction
- Fire Fighting System
- CCTV in Common Areas
- Branded Modular Switches
- Concealed Wiring in Copper Conductor
- Generator Back-up for Lifts & Common Areas
- Smooth Plaster Finish Internal Walls
- Plaster Finish Exterior Walls with Acrylic Paint
- Vitrified Tiles in All Rooms
- Anti-Skid Ceramic Tiles for Flooring in Bathroom
- Moulded Shutter Main Door
- Powder-Coated Aluminium Windows
- Polished Granite Platform in Kitchen
- Stainless Steel Sink

# OUR LEGACY

The core beliefs of OSHO Developers is to manifest in an unending dedication to superior quality, finesse and detailed perfection.

The core of human living is Air, Space & Sun. And in our every planning these are the core of designing.

Each space shall give immense of Godliness interns if Air, Sun & Space for happier & healthier living.

Despite being highly sophisticated and high rise buildings with modern amenities we never forget the Mother Nature giving ample to humans. Our projects are combination of best of technology and still being with nature with ample of space, light, air and sun.

Welcome to world of happy and healthy living,  
welcome to ONE Borivali.

**OSHO** Developers

# DELIVERED PROJECTS

Tranquility

ASHWIN HEIGHTS

*Neel Kamal  
Heights*

  
ANKUR PALACE  
Palatial Living

## WORKING WITH THE BEST

Design Architect

 **TRIARCH DESIGN STUDIO**  
ARCHITECTS AND INTERIOR DESIGNERS

Consultanting Architect

Kalpesh Shah

Legal Advisor

  
**MARKAND GANDHI & CO**  
ADVOCATES & SOLICITORS

# OSHO Developers

Site Address: ONE Borivali, Ram Mandir Road, Babhai Naka, Borivali West, Mumbai – 400092  
Call: +91 74000 47833 / 34 / 35 | Email: [life@oneborivali.in](mailto:life@oneborivali.in) | Website: [oneborivali.in](http://oneborivali.in)

---

MahaRERA No.: P51XXXXXXXX | <http://maharera.mahaonline.gov.in>

---

Scan for Location



Disclaimer: This brochure is purely conceptual and does not constitute a legal offering. Developers reserves the right to add, delete, alter or modify any part of the offering described herein. Added elements showcased, including but not limited to images, plans and illustrations, are only indicative and / or conceptual and may not be provided by the Developer. The images shown here are only for representation purpose only.