

DISCOVER LIFE'S BEST CONNECT
IN THE HEART OF MUMBAI

 RUPAREL
PRIMERO
TILAK NAGAR - CHEMBUR



Artist's Impression



CONNECTING YOUR DREAMS VALUING YOUR EXPECTATIONS

Life is all about having a better connect with everything.

A connect that transforms your dream into reality. A nexus that bridges the gap between your wishes and wants. A link that joins your lifestyle with comforts & conveniences.

Now here's a world shaping up in Tilak Nagar, Chembur that meets your desire of owning a centrally located home fitting perfectly in your budget. A home that truly values your expectations while ushering you the pride of ownership.

Welcome to Ruparel Primero.

A true value home offering life's best connect in every sense.



Artist's Impression

CONNECT TO LIFE IN YOUR WORLD OF PRIVILEGES



Project Highlights:

- Magnificent G+ 18' Storey Tower with Unique Sky-lifestyle ('Proposed)
- 1 & 2 BHK Fully Furnished' Air-conditioned Homes
- Extravagant Health & Recreation Avenues on Rooftop
- Gated Security & Video-door Phones
- Strategically Situated Next to Santacruz-Chembur Link Road

CONNECT TO CONVENIENCES AT YOUR CENTRALLY LOCATED ADDRESS OF MUMBAI

Location Advantages of Ruparel Primero

Connectivity

- Santacruz-Chembur Link Road - 200 Mtrs
- Lokmanya Tilak Terminus – 800 Mtrs
- Tilak Nagar Railway Station – 1 Km
- Eastern Express Highway – 1 Km
- Chembur Monorail Station – 1.6 Kms
- Kurla Railway Station – 2.4 Kms
- Chembur Railway Station – 2.6 Kms
- Upcoming Metro(Amar Mahal) - 1.2 Kms
- Navi Mumbai, Central & South Mumbai- Easily Accessible

Prominent Landmarks

- Shoppers Stop – 750 Mtrs
- BKC – 3.5 Kms
- Phoenix Marketcity – 4.2 Kms
- R City Mall – 4.9 Kms
- International Airport – 9.4 Kms
- Domestic Airport – 9.9 Kms

Distance as per Google Map

LOCATION MAP

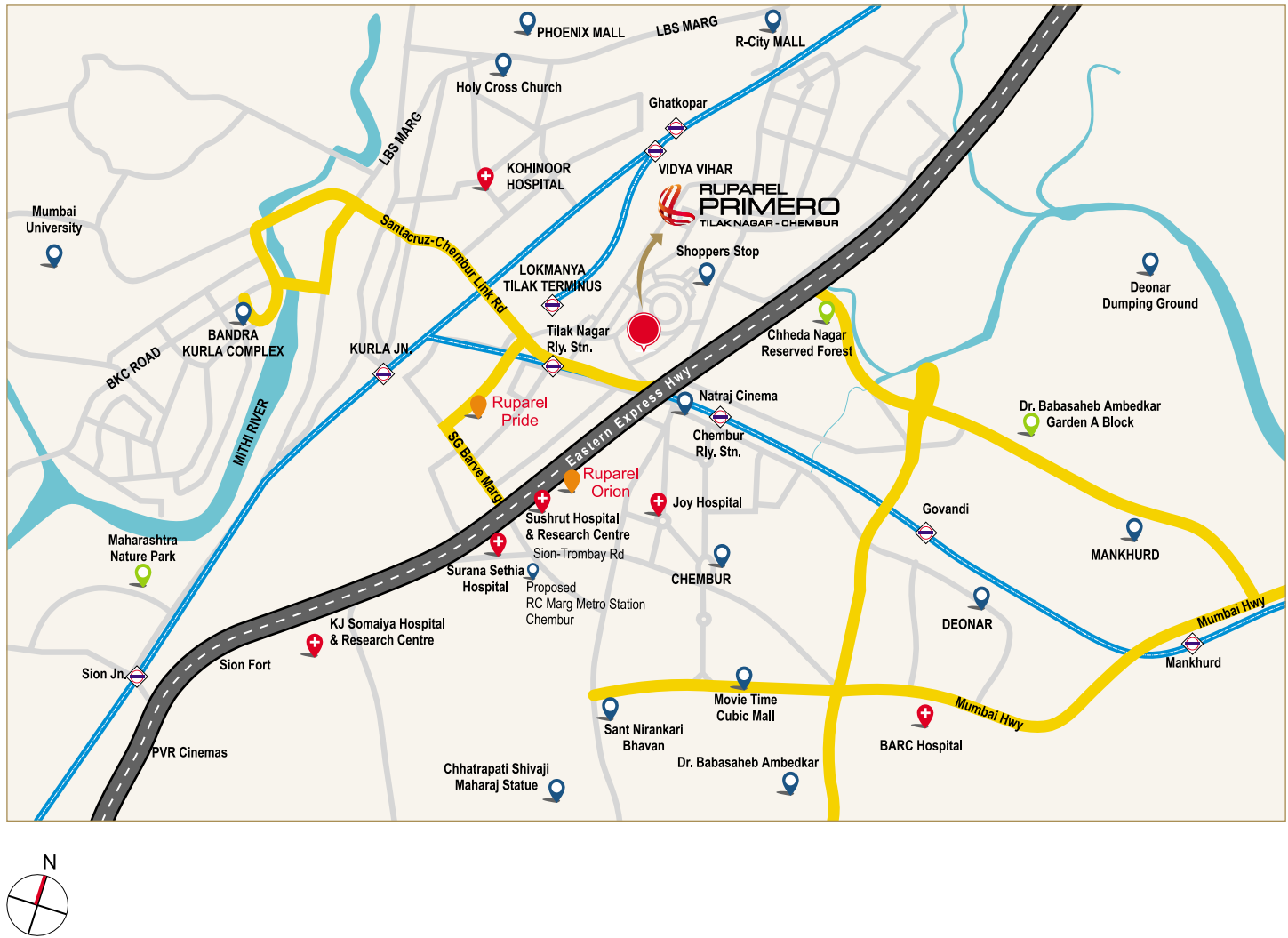


Image for representation purpose only

CONNECT TO CLASS LIVE IN THE OPTIMALLY DESIGNED SPACES

Exclusive Apartment Features

- Elegant Living Room & Bedroom with Imported Flooring
- Best-in-class Modular Kitchen
- Designer Bathrooms with Branded Sanitary Ware
- Video-door Phone Security



Image for representation purpose only



Image for representation purpose only



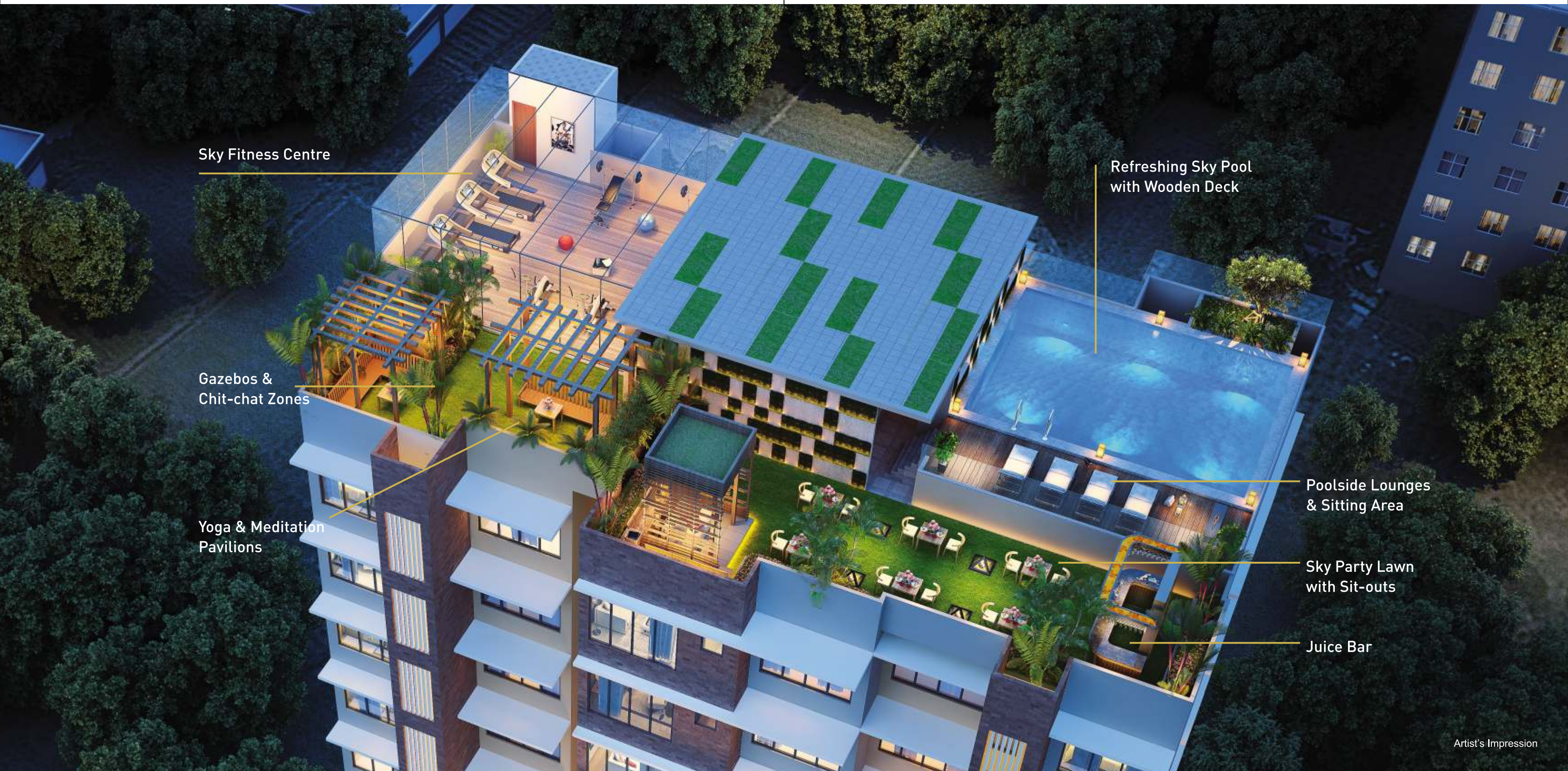
Image for representation purpose only



Image for representation purpose only

CONNECT TO SKY
USHERING A HIGH-LIFE
HEALTH & RECREATION

ROOFTOP
LIFESTYLE FEATURES



Sky Fitness Centre

Refreshing Sky Pool
with Wooden Deck

Gazebos &
Chit-chat Zones

Yoga & Meditation
Pavilions

Poolside Lounges
& Sitting Area

Sky Party Lawn
with Sit-outs

Juice Bar

CONNECT TO PLEASURES
UNDER THE AZURE SKY POOL

ROOFTOP SWIMMING POOL WITH
JUICE BAR, WOODEN DECK & LOUNGES



CONNECT TO SKY-PRIVILEGES
TO EXPERIENCE HAPPINESS
& WELL BEING

ROOFTOP WELLNESS & ENTERTAINMENT FEATURES



Fitness Centre



Yoga and Meditation



Sky Pool



Party Lawn



Gazebos

Images for representation purpose only

RUPAREL PRIMERO
AT A GLANCE

Project Highlights

- Magnificent G+ 18' Storey Tower with Unique Sky-lifestyle ('Proposed)
- 1 & 2 BHK Fully Furnished' Air-conditioned Homes
- Extravagant Health & Recreation Avenues on Rooftop
- Gated Security & Video-door Phones
- Strategically Situated Next to Santacruz-Chembur Link Road

Exclusive Apartment Features

- Elegant Living Room & Bedroom with Imported Flooring
- Best-in-class Modular Kitchen
- Designer Bathrooms with Branded Sanitary Ware

Sky Health & Recreation Features

- Refreshing Sky Pool with Wooden Deck
- Poolside Juice Bar, Lounges & Sitting Area
- Well-equipped Sky Fitness Centre
- Sky Party Lawn with Sit-outs
- Yoga & Meditation Pavilions
- Gazebos & Chit-chat Zones

THE CREATOR OF LANDMARKS AND LIFESTYLE

ONGOING PROJECTS (ALL PROJECTS ARE RERA COMPLIANT)



<p>RUPAREL SEA PALACE NERUL</p> <p>MahaRERA No. P51700005875</p>	<p>RUPAREL ARIANA PAREL</p> <p>MahaRERA No. P51900003250</p>	<p>RUPAREL ELAVIA DADAR (E)</p> <p>MahaRERA No. P51900009080</p>	<p>RUPAREL REGALIA SION (E)</p> <p>MahaRERA No. P51900009359</p>	<p>RUPAREL PRIDE NEHRU NAGAR, KURLA</p> <p>MahaRERA No. P51800020602 (Phase 1 till 16 storeys)</p>	<p>RUPAREL SKY GREENS KANDIVALI (W)</p> <p>MahaRERA No. P51800012513</p>	<p>RUPAREL PALACIO KANDIVALI (W)</p> <p>MahaRERA NO.: P51800013681 For Phase - I till 23 Storeys</p>
<p>RUPAREL NOVA PAREL</p> <p>MahaRERA No. P51900019946 For Phase - I till 19 Storeys</p>	<p>RUPAREL JEWEL PAREL</p> <p>MahaRERA No. P51900003058</p>	<p>RUPAREL IRIS MATUNGA (W)</p> <p>MahaRERA No. P51900005988</p>	<p>RUPAREL ORION CHEMBUR</p> <p>MahaRERA No. P51800004525</p>	<p>RUPAREL ELARA KANDIVALI (W)</p> <p>MahaRERA No. P51800014328</p>	<p>RUPAREL OPTIMA KANDIVALI (W)</p> <p>MahaRERA No. P51800013701 (For Phase I, Tower 1 & 2 till 22 Storeys & Tower 3 till 40 storeys)</p>	

An artistic rendering of various Ruparel high-rise apartment buildings at night, illuminated with blue, white, and yellow lights. The buildings are set against a dark sky and are surrounded by a dense green forest in the foreground.

Artists Impressions



THE ICON OF SUPERLATIVE LIFESTYLE

Established in the year 2000, Ruparel Realty, has been constructing numerous Residential & Commercial marvels that have carved a unique niche in the world of construction. The group is currently constructing 2 million sq.ft in the prime lands of Mumbai Metropolitan Region with 2.5 lakhs delivered sq.ft in Navi Mumbai Metropolitan Region.

The Group works with the top names in Real Estate like JW Consultants, Aakar Architects & Consultants, Eskayem Consultants, ACC and Skyway RMC to ensure timely completion of projects with no compromise in quality standards with latest construction technologies.

Since its inception the company has launched several projects, with notable developments like Ruparel Palacio, Ruparel Optima, Ruparel Ariana, Ruparel Iris, Ruparel Orion and Ruparel Sea Palace and many more. In the past 18 months, the group has acquired 30 acres land in Kandivali (west), 5 acres lands in Parel and other developments in Western and Central suburbs. With its mass presence across the most desired areas in Mumbai, the group is on the road of substantial success.

Ruparel Group believes in the right talent and spares no boundaries in hiring the best for the job. In the past 12 months the company has employed more than 100 best talents from various sectors with candidates working with the "Top 100 companies to work for in India." setting the best work culture and aiming to be the most desirable company to work for.

The group overwhelming success is marked by the finest financial institutions like L&T Finance, ICICI Bank, Axis Bank, HDFC and State Bank of India.

FLOOR PLANS