

WE WILL  
TAKE YOU TO  
HIGHER  
PLACE

# TELOSA

By Kinglife





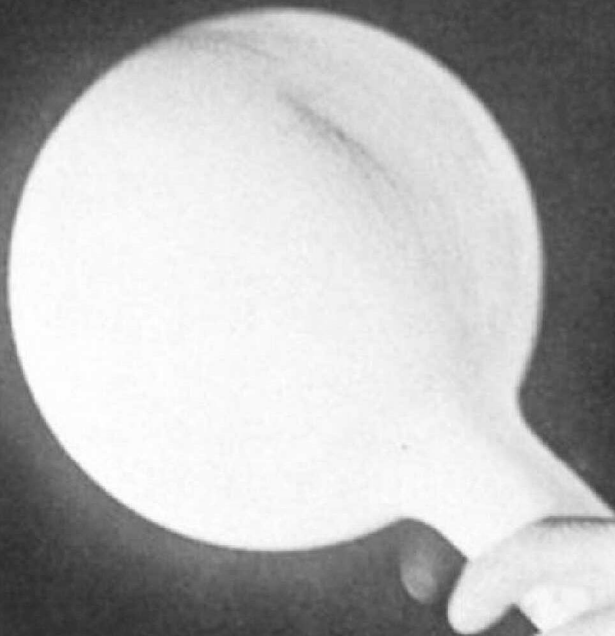


I DON'T CARE THAT THEY  
STOLE MY IDEA...

I CARE THAT THEY DON'T  
HAVE ANY OF THEIR OWN.

---

NIKOLA TESLA





# TELOSA

By Kinglife

Where luxury meets comfort Who doesn't cherish those tranquil mornings spent basking in the warm sunlight on their balcony with a steaming cup of coffee in hand? At Telosa, we understand the profound joy that moments like these bring. and we're here to turn it into your everyday reality.

Telosa isn't just a residence; it's a sanctuary of comfortable luxury, designed to create an exquisite living experience. We've masterfully woven together the generous expanse of spacious balconies with breathtaking views of the surrounding landscape. Whether you prefer to savor your morning coffee, host a memorable dinner, or simply relax with a good book, our balconies offer the perfect space and views.

But our commitment to exceptional living doesn't end there. Our spacious rooms are versatile and capable of functioning as your office, living area, or formal dining room. We've integrated all the facilities you need and gone one step further. Our rooms are designed for transformation, making it easy to create a family lounge, so you can truly make this space your own.

True grandeur isn't just about what you see; it's about what you feel. At Telosa, we've redefined luxury to encompass both the visual splendor and the daily experiences that make life truly extraordinary.

Welcome to Telosa, where luxury meets comfort. We can't wait to share this incredible journey with you to turn your dream into your address.



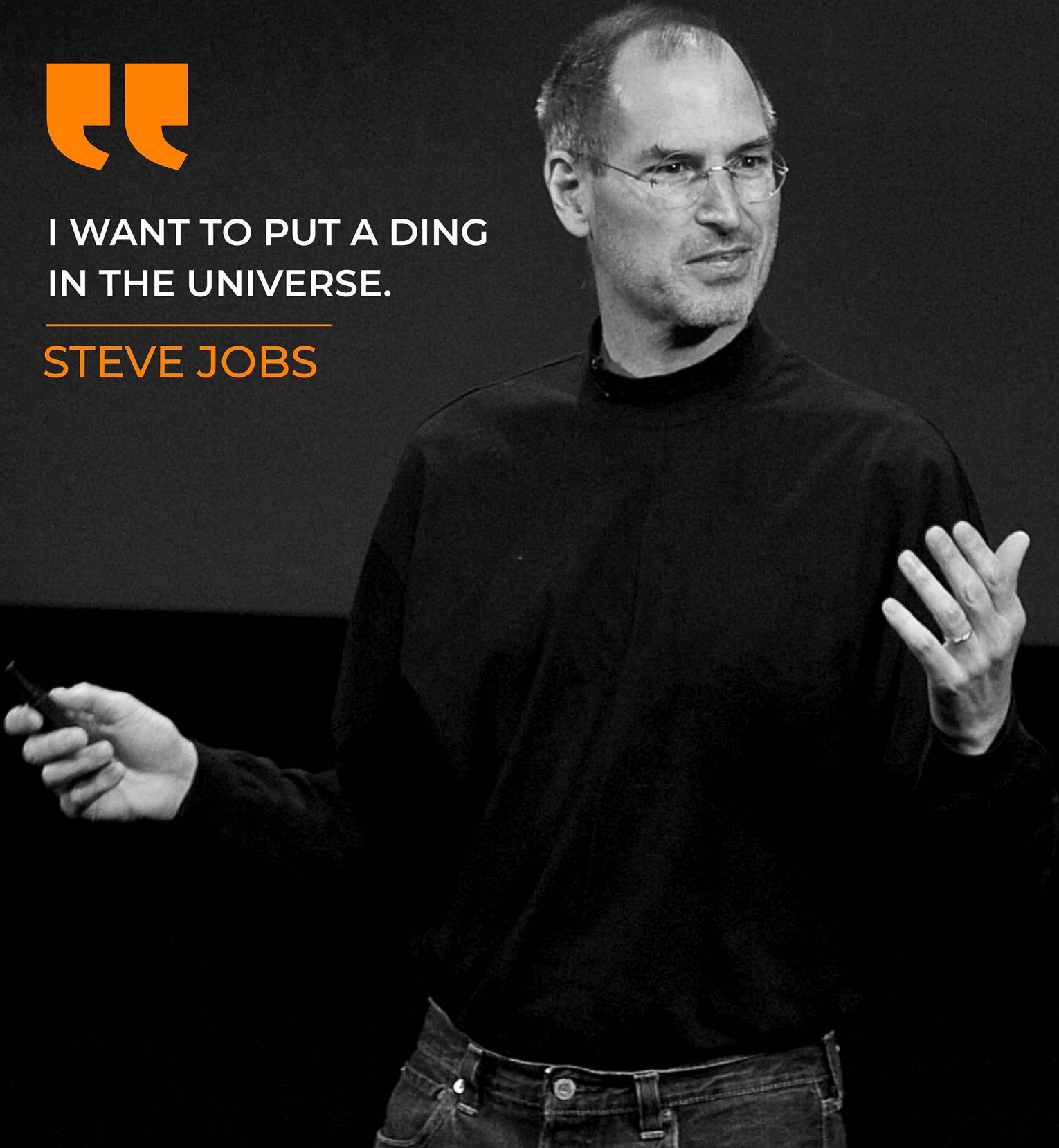




I WANT TO PUT A DING  
IN THE UNIVERSE.

---

STEVE JOBS





# ABOUT COMPANY

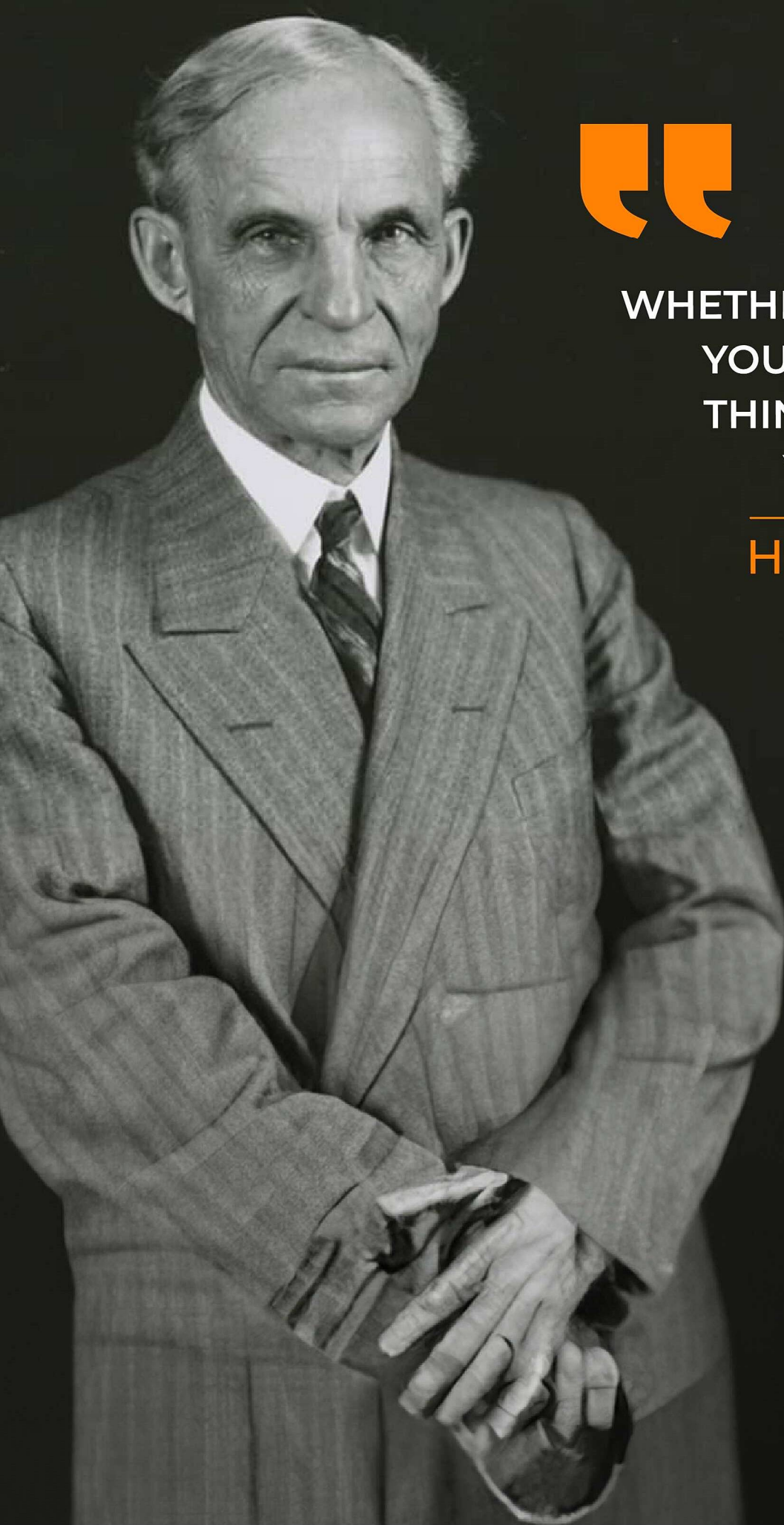
At Kinglife Infra, we are in the business of creating comfortable living spaces for people who have a taste for the sophisticated. With our properties located at some of the most premium locations, we ensure that an ambience of overall elegance and class is created. We leave no stone unturned in ensuring that your expectations are exceeded through an amalgamation of world-class quality construction, pristine finish, luxurious experience, and timely delivery of the projects.

With our state of the art design capabilities, we ensure that you get nothing but the best when it comes to creating a masterpiece of style.

Kinglife infra, with its headquarters in Bengaluru, is driven by the vision of Mr. Ambalal Patel, Mr. Muni. K and Mr. Bharat, all of whom have maintained a vision to create happy living spaces designed exquisitely for those who want nothing but the best. This belief, combined with deep-rooted values, robust engineering, transparency and timely delivery, makes Kinglife Infra the preferred partner of so many.







WHETHER YOU THINK  
YOU CAN, OR YOU  
THINK YOU CAN'T,  
YOU'RE RIGHT

---

HENRY FORD



# AMENITIES

---



Italian Marble in Living,  
Dining & Common Areas



Cauvery Water  
& Borewell Water



Wooden Flooring  
in All Bedrooms



Elevator –  
16 Passenger



Gym, Yoga  
& Meditation Room



24 Hrs.  
Power Backup



Windows by  
Fenesta/Equivalent



Stilt  
Car Parking



CCTV in  
Common Areas



Heated  
Swimming Pool



Video Door Phone  
& Intercom



Centralised  
Gas



Terrace Zen Garden  
& Barbeque Area



Centralised  
Hot Water



Grohe Fittings  
in All Bathrooms



Rain Water  
Harvesting



Gated  
Community

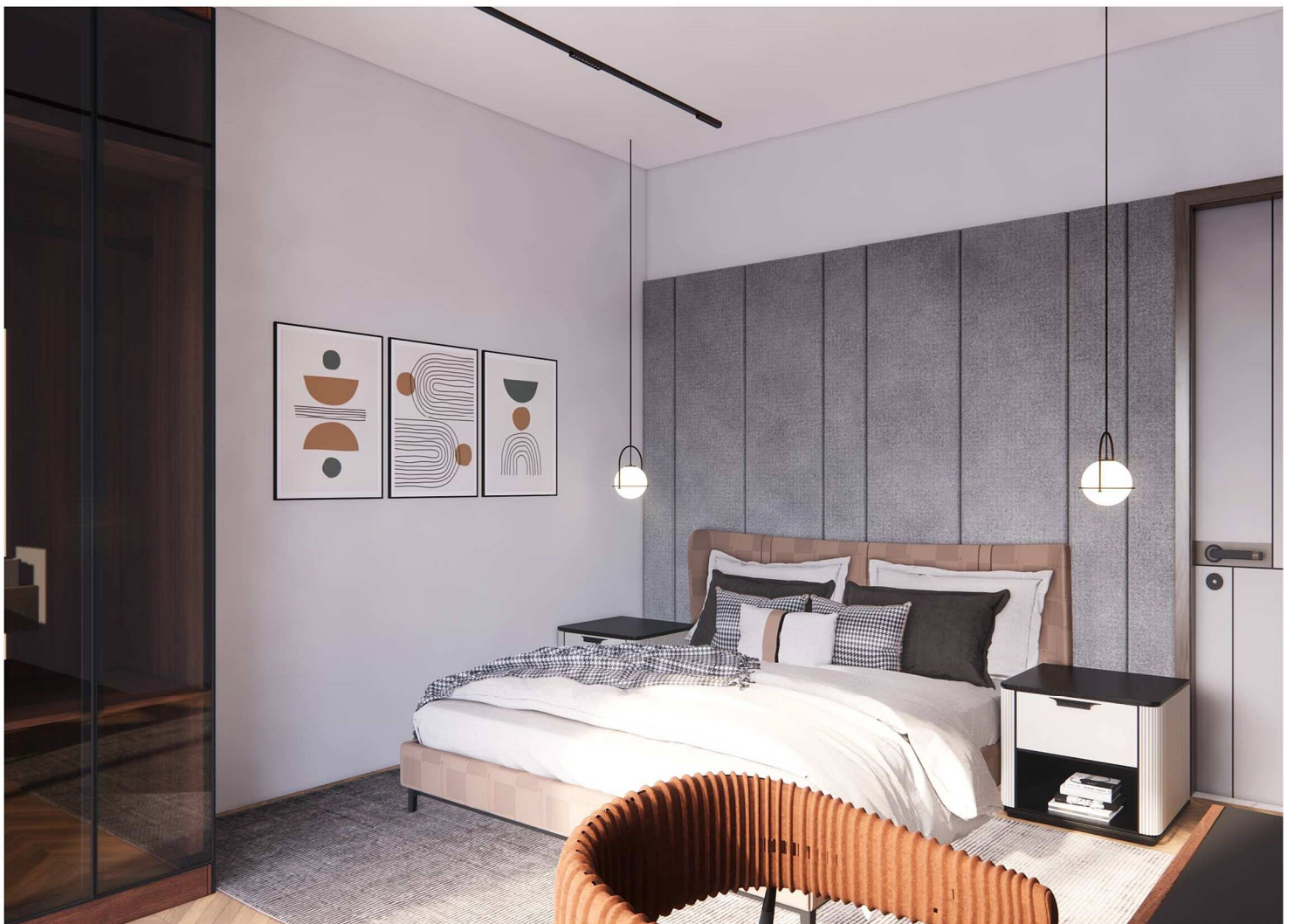


24 Hrs.  
Security



Fire  
Safety





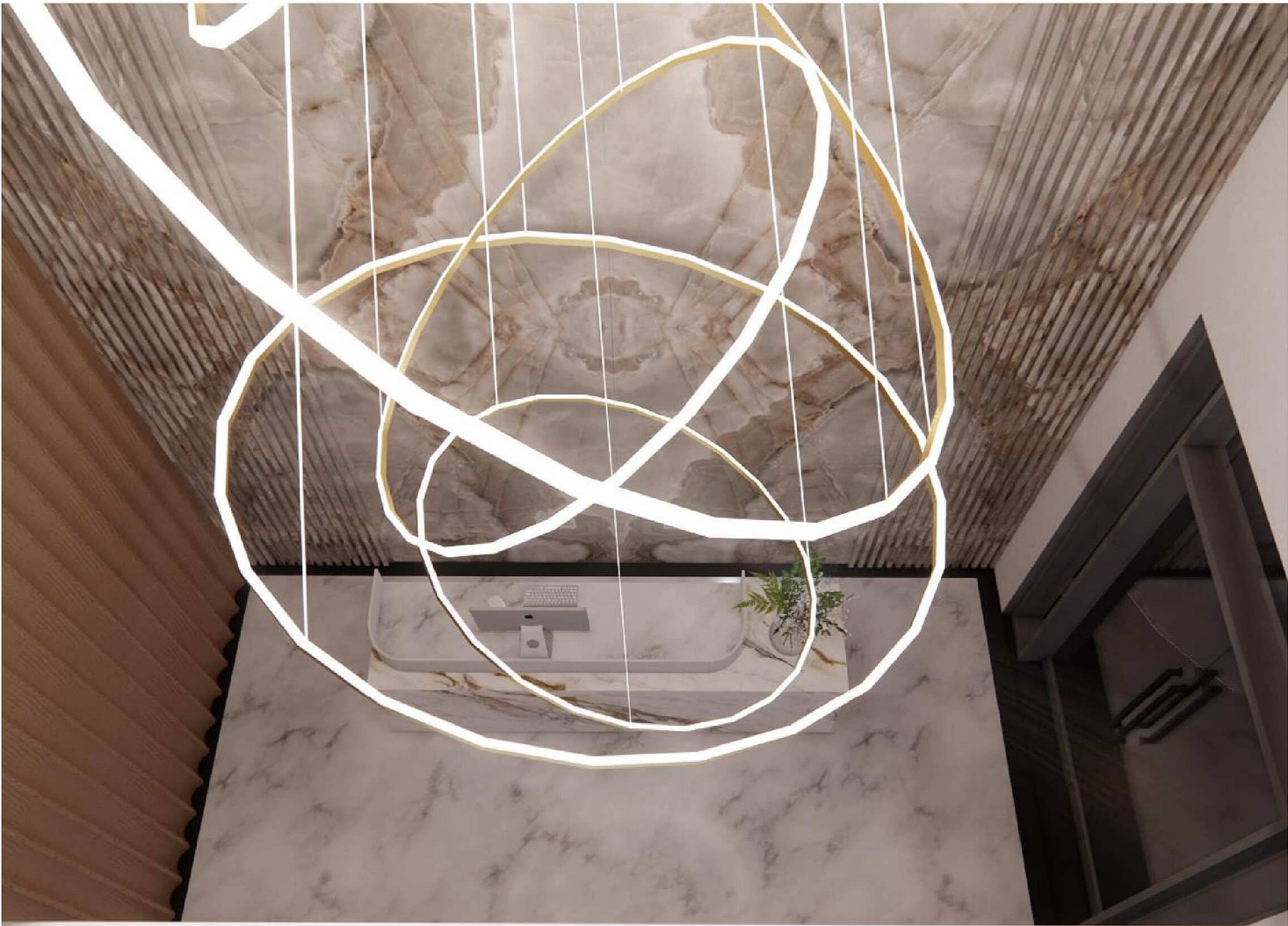






















# WHY TELOSA

---

Telosa is an exclusive luxury residential project located Koramangla, Bangalore, Offering just eight spacious apartments in a single tower. Each apartment boasts italian marble flooring, high-end finishes, and 100% power backup. The project's design follows vastu principles and features state of the art security systems. It offers a unique blend of urban convenience and custom-built exclusivity, with easy access to shopping, entertainment, healthcare, and education.

## Telosa Offers:

- Limited-time pricing incentives.
- Customization options for apartment interiors.
- Hassle-free buying process.
- Secure and serene living environment.
- Exclusive community of like-minded residents.
- Eight super spacious luxury aptment.
- Prime Koramangla Location.
- Vaastu-compliant design.
- State of the art security features.
- Italian marble flooring and high-end finishes.
- Exclusive and private living experience.



# NEAR LOCATION TO BEL-AIR

The Pleasure Of Living In A Good Location.

Located strategically in Koramangala, Telosa is close to all things important



**ST. JOHN'S**  
MEDICAL COLLEGE HOSPITAL

**manipalhospitals**  
LIFE'S ON



SVKM'S  
**NMIMS**  
Deemed to be UNIVERSITY

**DHULE**



**CHRIST**  
UNIVERSITY  
BENGALURU, INDIA

Declared as Deemed to be University under Section 3 of UGC Act 1956



**JYOTI NIVAS COLLEGE**  
Autonomous  
Bengaluru , Karnataka

**D<sup>+</sup>Mart**

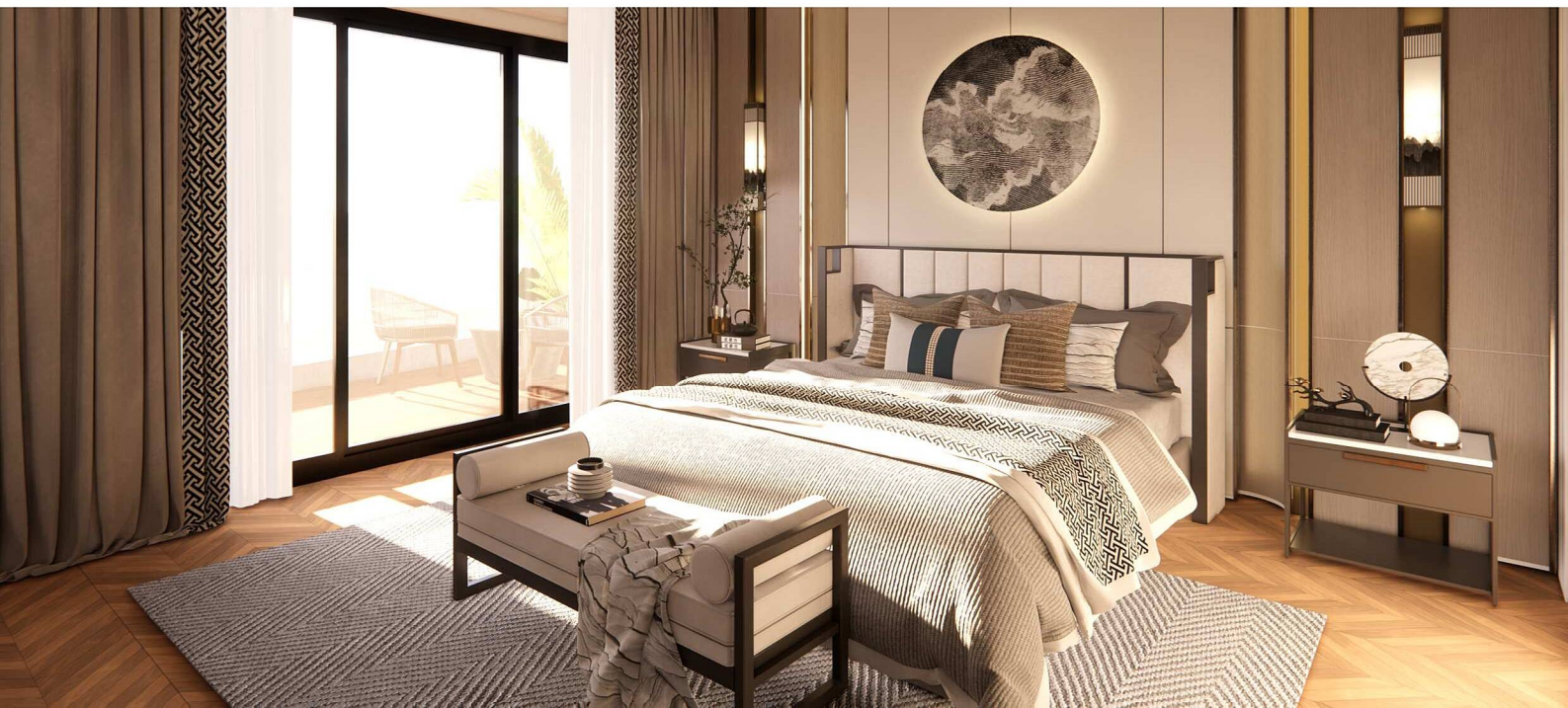




# SPECIFICATION

---

1. RCC Construction
2. UPVC With Toughened Glass Shutters
3. Italian Marble Flooring For Living And Dining Areas
4. Wooden Laminate Flooring In All Bedrooms- Pergo
5. Vitrified Tiles In Kitchen, Bathrooms & Utility Area- Nitco/ Kajaria/ Somany
6. Kitchen Dado In Vitrified Tiles- - Nitco/ Kajaria/ Somany
7. Granite Leather Finish Flooring In Common Lobbies And Granite Common Staircase
9. Bath Fittings- Kohler/ Equivalent
10. Sanitary Fittings- Kohler/ Equivalent
11. All Bathrooms With Vanity Counter
12. Vaastu Compliant Homes
13. Covered Stilt Car Parking With Ports To Charge Electric Vehicles
14. Schindler/Equivalent Elevator
15. Schindler / Equivalent Switches
16. 100% Power Back up DG Of Kirloskar/ Equivalent
19. Wires- Havells (non Smoke)
20. CPVC- Supreme/ Ashirwad





# STILT FLOOR





**Unit Details:**

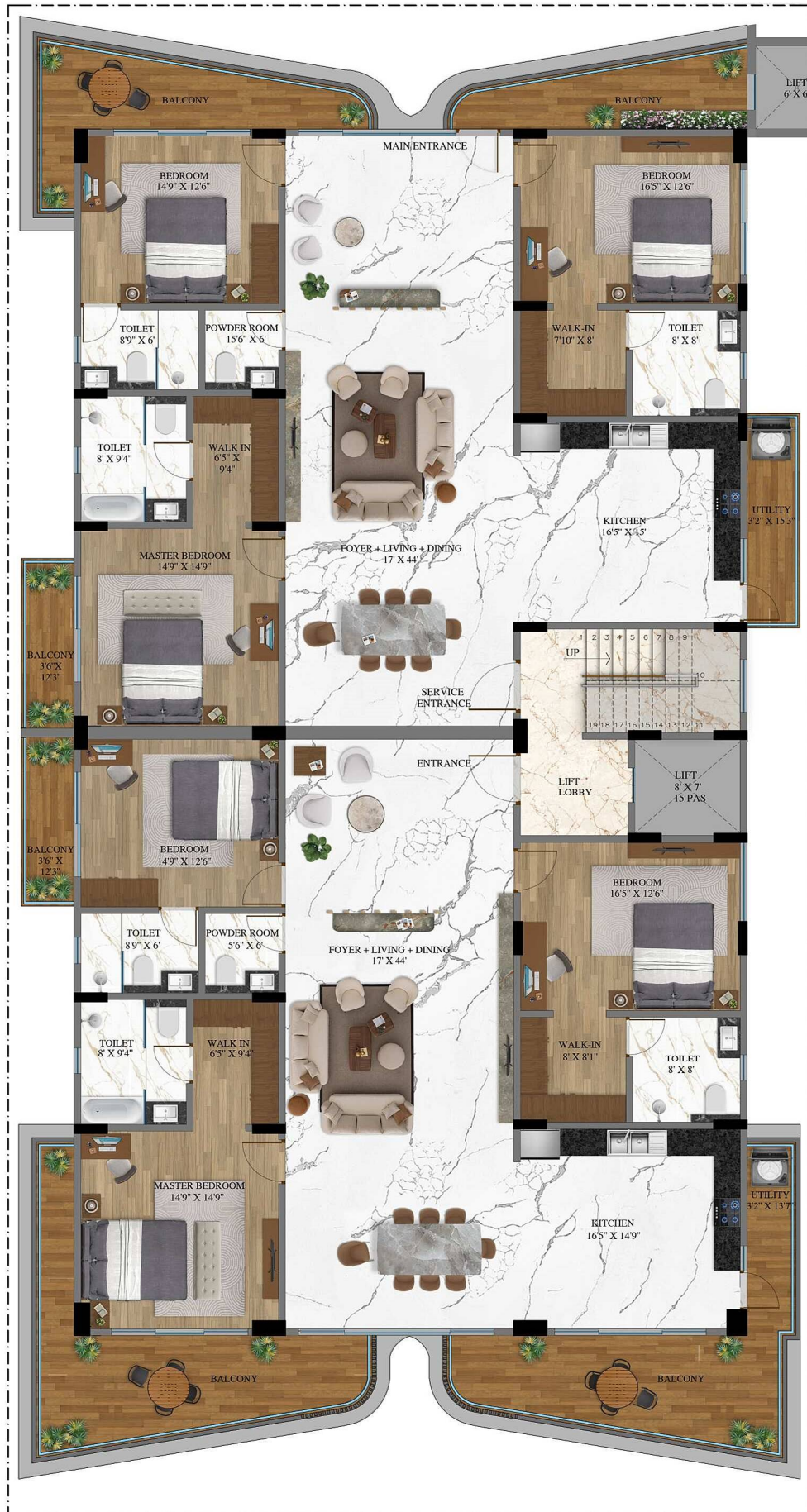
- Unit 1 (Left):**
  - BALCONY
  - BEDROOM 1: 14'9" X 12'6"
  - TOILET: 8'9" X 6'
  - POWDER ROOM: 5'6" X 6'
  - TOILET: 8' X 9'4"
  - WALK IN: 6'5" X 9'2"
  - MASTER BEDROOM: 14'9" X 14'9"
  - BALCONY: 4' X 12'6"
  - BEDROOM 1: 14'9" X 12'6"
  - TOILET: 8'9" X 6'
  - POWDER ROOM: 5'6" X 6'
  - TOILET: 8' X 9'4"
  - WALK IN: 6'5" X 9'4"
  - MASTER BEDROOM: 14'9" X 14'9"
  - BALCONY
- Unit 2 (Right):**
  - BALCONY
  - BEDROOM 2: 16'5" X 12'6"
  - WALK-IN: 7'10" X 8'
  - TOILET: 8' X 8'
  - KITCHEN: 16'5" X 15'
  - UTILITY: 4' X 15'6"
  - UP
  - LIFT LOBBY
  - LIFT: 8' X 7' 15 PAS
  - DOUBLE HEIGHT: 7'6" X 8'
  - TOILET: 8'4" X 8'
  - BEDROOM 2: 16'5" X 12'8"
  - KITCHEN: 16'5" X 14'9"
  - UTILITY: 4' X 15'
  - BALCONY

**Common Areas:**

- MAIN ENTRANCE
- FOYER + LIVING + DINING: 17'3" X 44'7"
- SERVICE ENTRANCE
- ENTRANCE

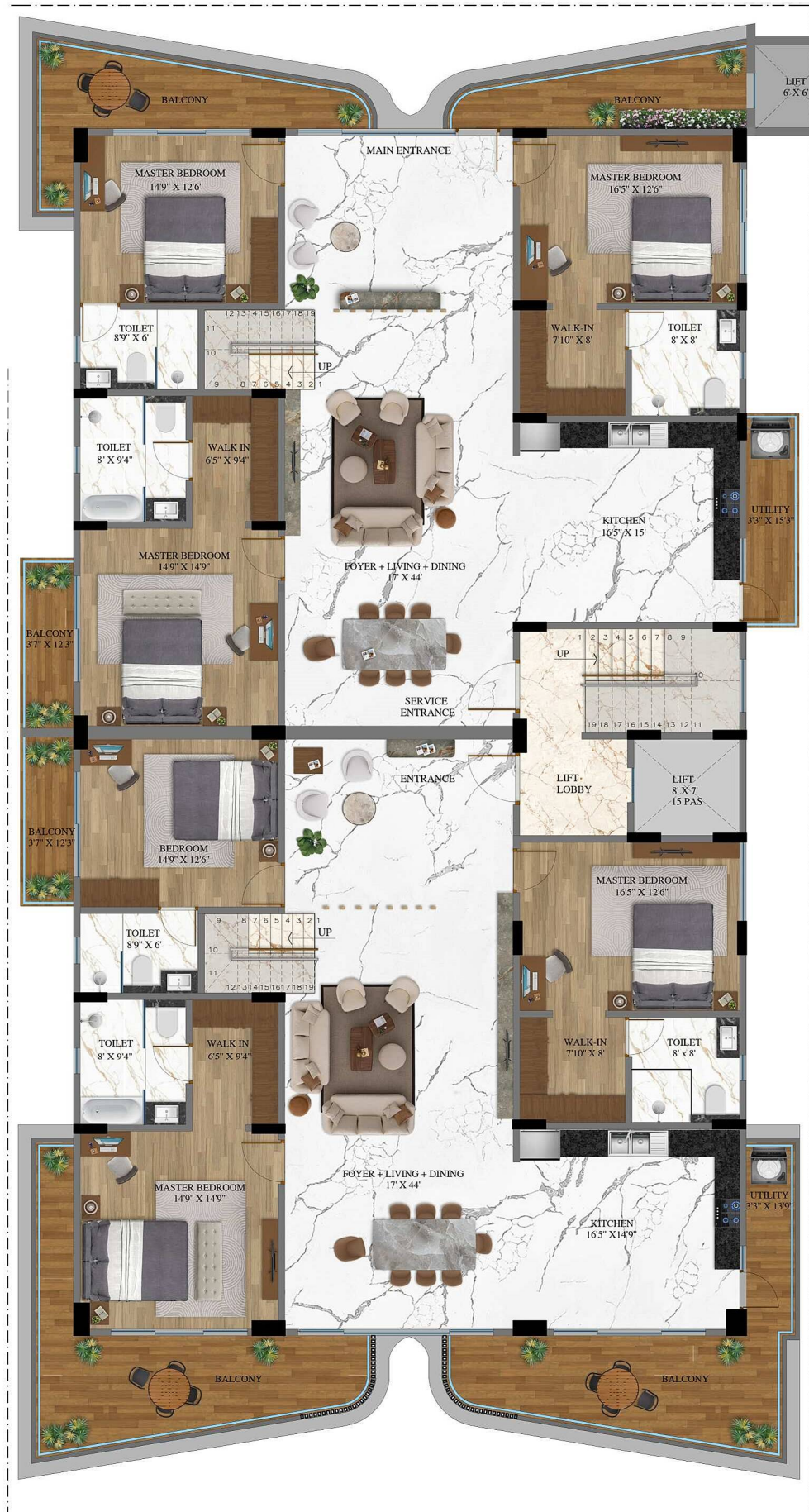


# SECOND AND THIRD FLOOR





# FORTH FLOOR

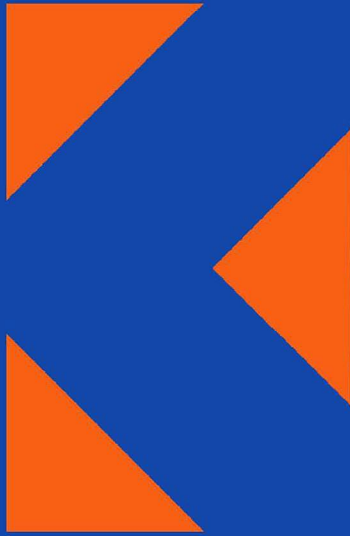




# TERRACE







**KINGLIFE**  
INFRA PVT LTD



**KINGLIFE**  
INFRA PVT LTD



**KINGLIFE**  
INFRA PVT LTD