



YOUR  
opulent  
abode



Shastri Nagar, Rd Number 1, Mitha Nagar, Goregaon (W)

# YOUR peaceful URBAN RETREAT

Step into a world where vibrant city life meets serene living. **PCPL OM Manikanta, an epitome of modern urban living, stands proudly in the heart of Goregaon West.** Discover the essence of sophisticated living with our thoughtfully designed residences. Each 2 and 3 BHK home is crafted with precision, blending quality materials, intelligent layouts, and timeless aesthetics.

OM Manikanta offers unparalleled convenience. Located in Shastri Nagar, Goregaon West, you are seamlessly connected to major transit hubs and key roadways, ensuring your daily commute is a breeze. Nearby, explore a host of shopping, leisure, and educational options, all within easy reach.

**Experience the perfect balance of connectivity and comfort at OM Manikanta. Join a community that values quality, comfort, and a refined lifestyle.**

# crafting memories

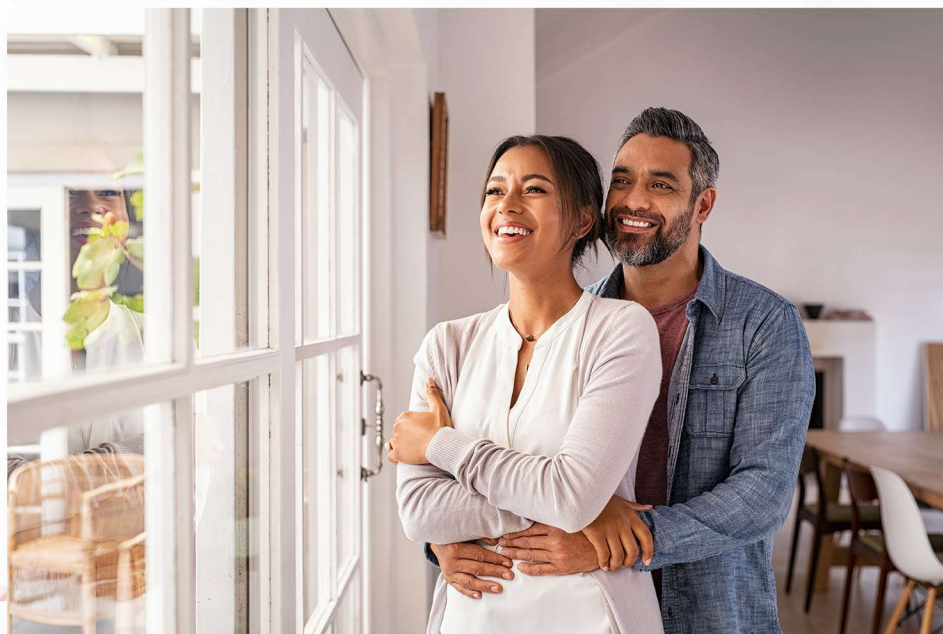
## IN THE LAP OF LUXURY



Pranav Constructions Limited (formerly known as Pranav Constructions Private Limited) embarked on its journey in 2003 with a small but visionary step. From its humble beginnings of handling individual projects, PCPL has rapidly grown into a reputable company, capable of managing multiple large-scale projects concurrently, while maintaining an unwavering commitment to quality and timely delivery.

Headquartered in Mumbai, where time is an invaluable commodity, PCPL has already completed and has ongoing projects, encompassing an impressive 10.42 lakh square feet, bringing joy to over 1040 families. Moreover, PCPL has committed to delivering an additional 19.58 lakh square feet of development.

PCPL has firmly established itself as one of the top redevelopers in Mumbai, dedicated to delivering every project on schedule. Their unwavering commitment to quality and customer satisfaction has earned the company the trust and loyalty of its customers.



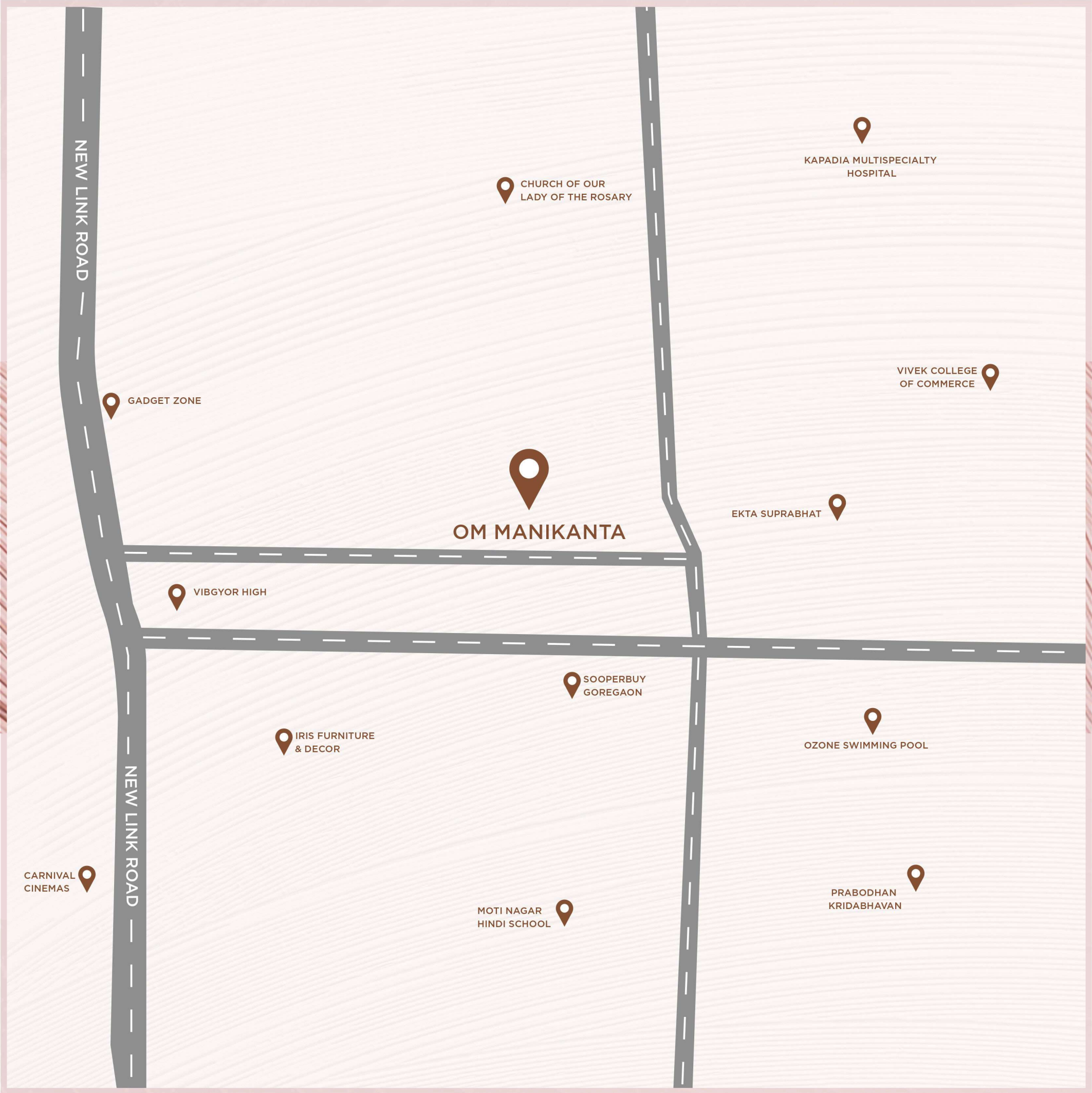
**PCPL**<sup>®</sup>  
REDEVELOPING HOMES  
REBUILDING COMMUNITIES

Experience vibrant living at PCPL OM Manikanta in Goregaon West. Located at Shastri Nagar, enjoy easy access to Goregaon Railway Station and Bangur Nagar Metro Station. Nearby, find S.V. Road, Mart, Goregaon Sports Club, and PVR Cinemas.

Top educational institutions include St. John's Universal School, Patkar College, and Vibgyor High School. For healthcare and banking, Kapadia Multispeciality Hospital, Suvidha Hospital, Indian Bank, and Cosmos Bank are close by.

**Discover comfort and connectivity at PCPL OM Manikanta in the heart of Goregaon West.**





NEW LINK ROAD

GADGET ZONE

CHURCH OF OUR  
LADY OF THE ROSARY

KAPADIA MULTISPECIALTY  
HOSPITAL

VIVEK COLLEGE  
OF COMMERCE

OM MANIKANTA

EKTA SUPRABHAT

VIBGYOR HIGH

SOOPERBUY  
GOREGAON

IRIS FURNITURE  
& DECOR

OZONE SWIMMING POOL

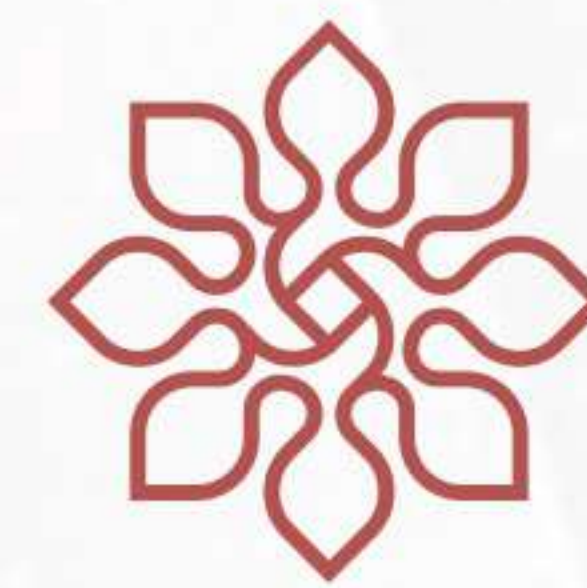
CARNIVAL  
CINEMAS

MOTI NAGAR  
HINDI SCHOOL

PRABODHAN  
KRIDABHAVAN

NEW LINK ROAD

# location salience



## TRANSIT

Goregaon Railway Station : 1.90 Km  
S.V. Road : 0.90 Km  
Western Express Highway : 2.90 Km  
Link Road : 0.65 Km  
Pahadi Goregaon Metro Station : 1.1 Km



## RECREATION

Bharat Ratna Rajiv Gandhi Garden : 0.50 Km  
Ganesh Maidan : 0.6 Km



## EDUCATIONAL BUILDING

St. John's Universal School : 1.50 Km  
Patkar College : 1.80 Km  
Vibgyor High School : 0.4 Km



## HOSPITALS

Kapadia Multispecialty Hospital : 1.00 Km  
Suvidha Hospital : 1.20 Km



## BANKS

Indian Bank : 1.20 Km  
Cosmos Bank : 1.10 Km

ELEGANCE  
IN EVERY DETAIL,

tranquillity  
IN EVERY MOMENT.



gymnasium

Elevate your fitness journey in our state-of-the-art gymnasium.

\*Images used for representation purpose only



## yoga area

Meditate in peace with tranquil views from the Meditation Deck.



## toddler's play area

A joyful haven for your little ones to explore and play.



## barbeque area

Create memorable moments at  
our outdoor barbeque area.

## foot pool

Relax and refresh in our  
serene foot pool.



\*Images used for representation purpose only

# society office

A dedicated space for community meetings and resident interactions.



# seating area

Unwind in our thoughtfully designed seating area.

\*Images used for representation purpose only

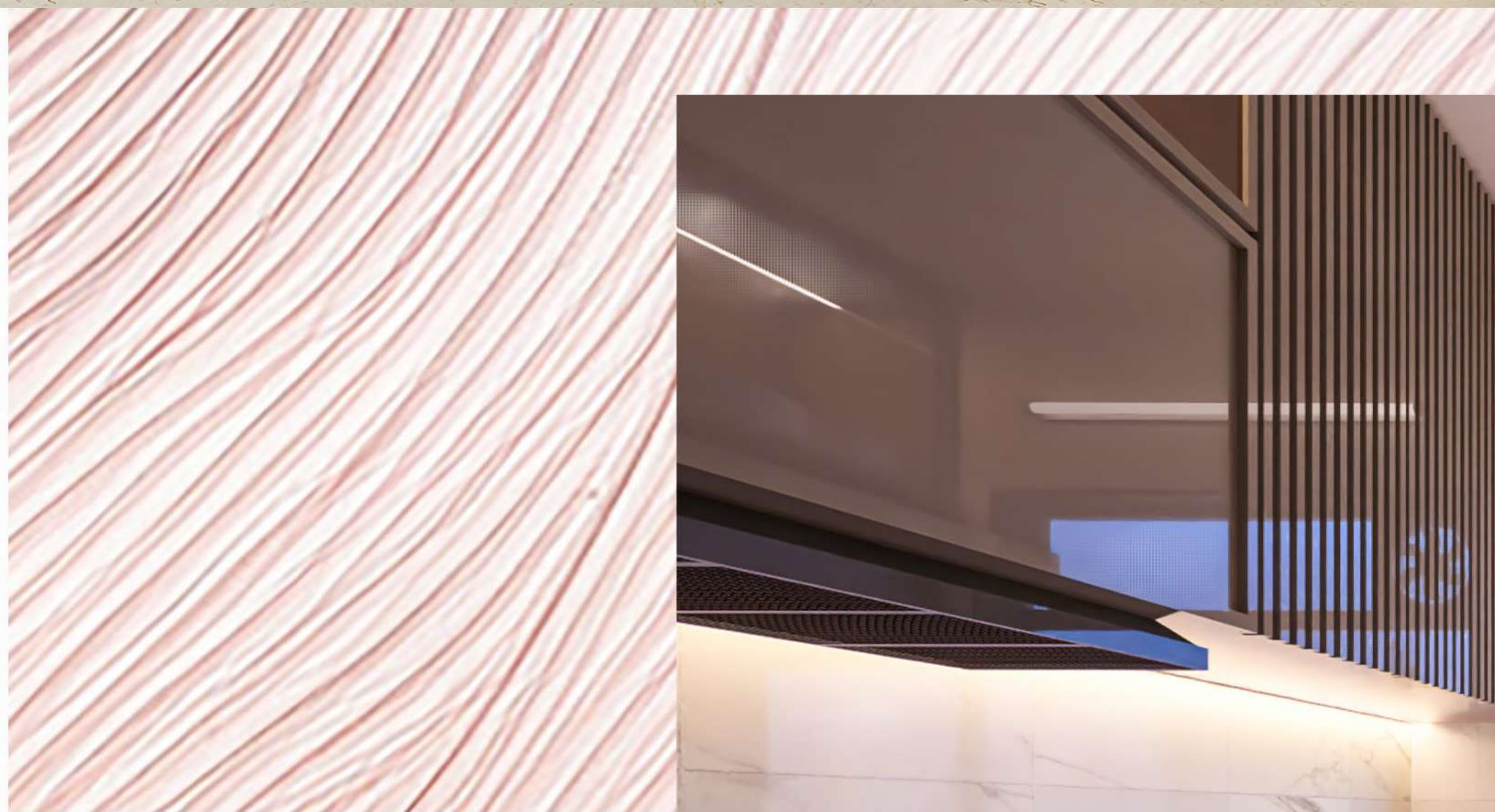
# RESIDENCES crafted FOR THE DISCERNING FEW



\*Images used for representation purpose only



# AN OASIS OF ELEGANCE

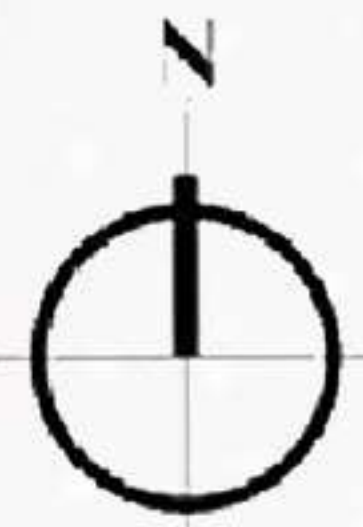


\*Images used for representation purpose only

# THE ULTIMATE urban retro

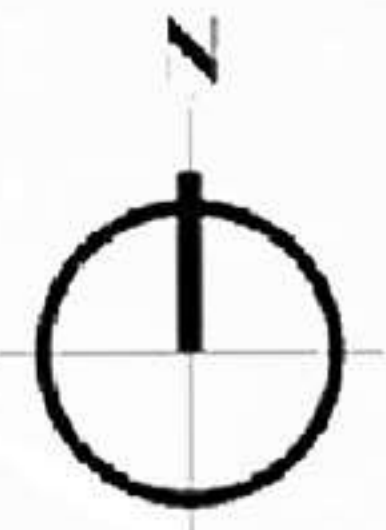
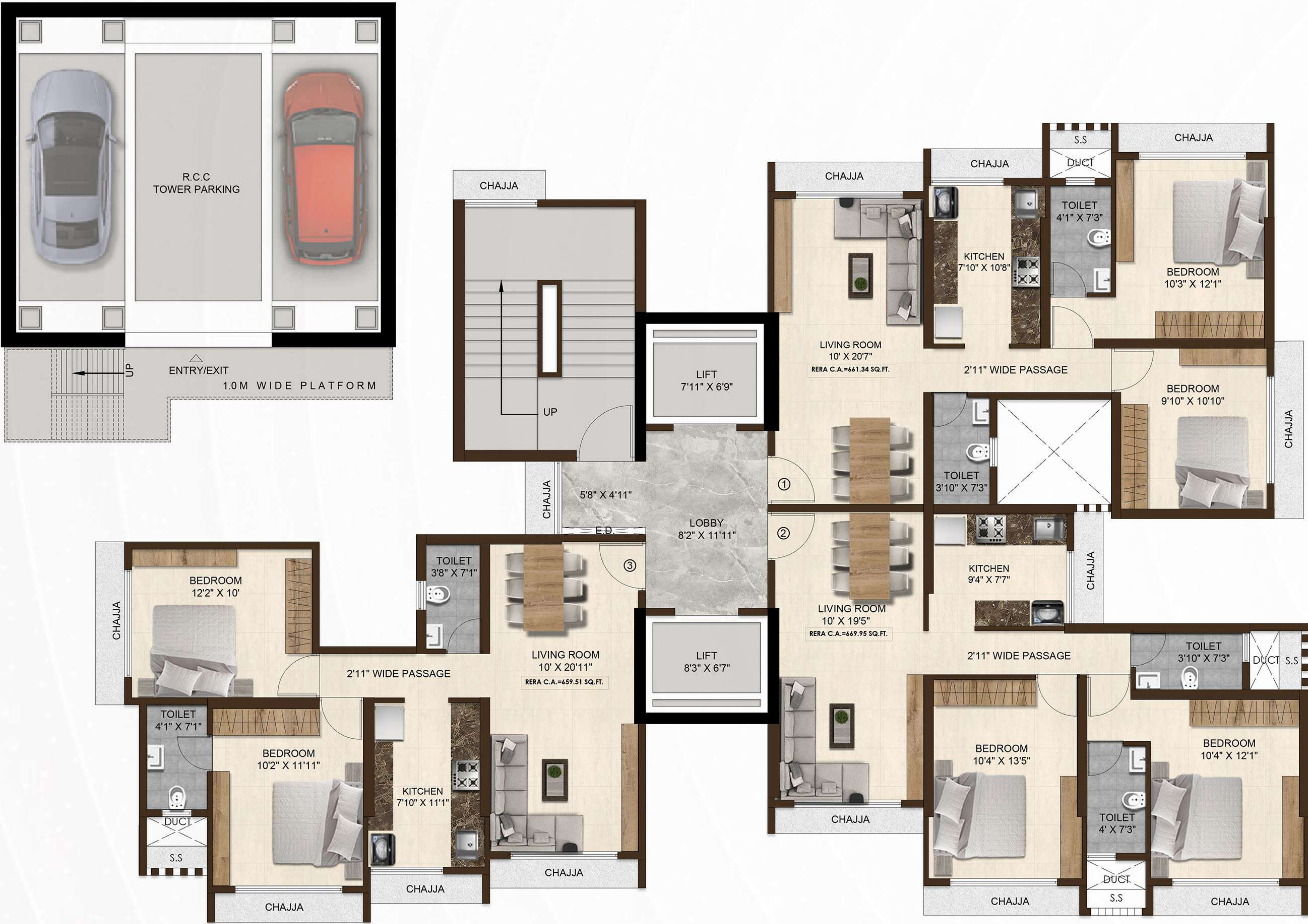
We strive to create a harmonious blend of comfort, convenience, and contemporary style in all our homes, ensuring that our customers enjoy a truly elevated living experience. Choose PCPL for homes that prioritize both style and functionality, ensuring that you enjoy a truly elevated living experience.

# ground floor plan



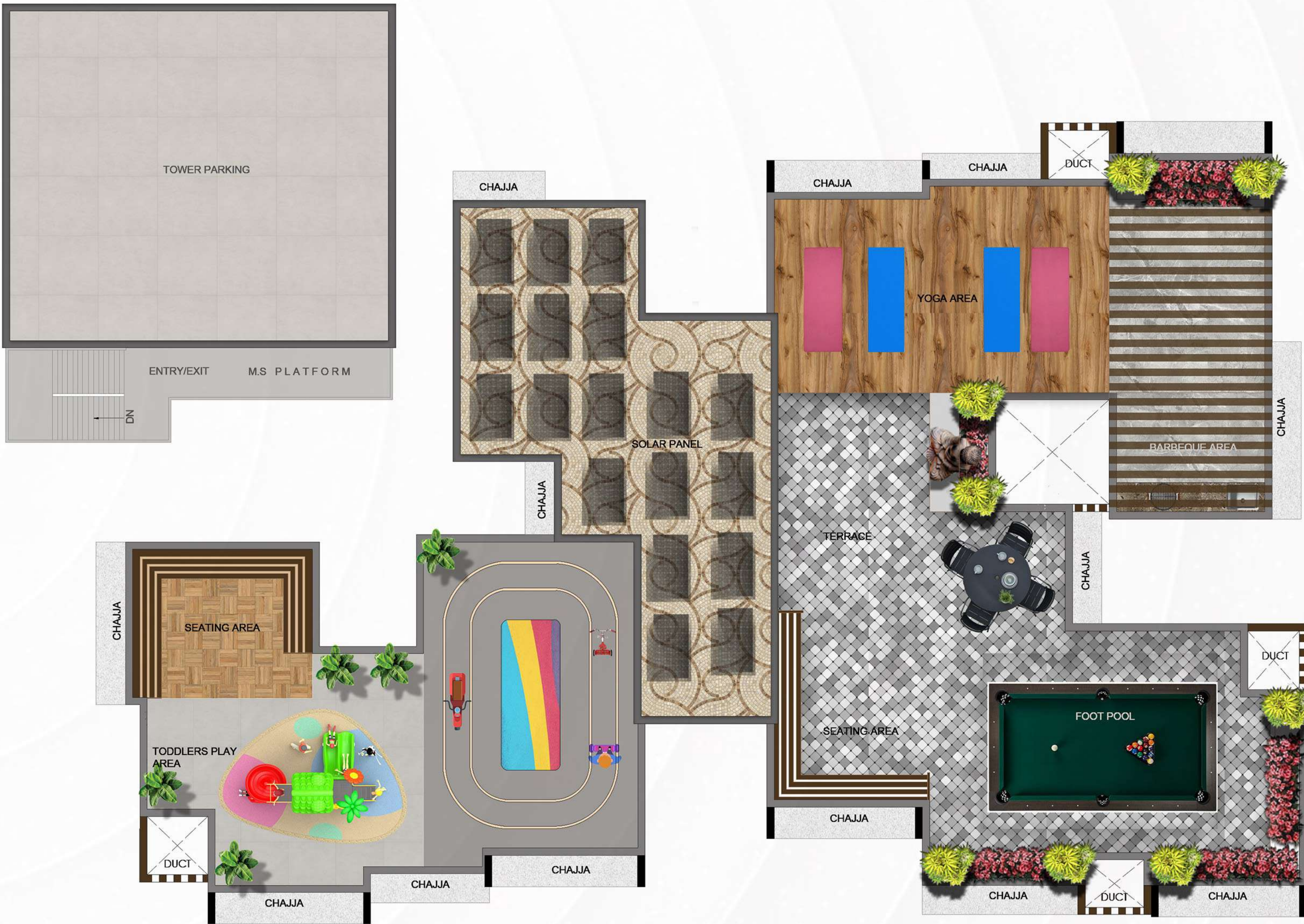
THE PLANS ARE SUBJECT TO CHANGE BY THE LOCAL AUTHORITIES.  
THE DRAWINGS ARE NOT TO SCALE

# typical floor plan



THE PLANS ARE SUBJECT TO CHANGE BY THE LOCAL AUTHORITIES.  
THE DRAWINGS ARE NOT TO SCALE

# terrace floor plan



THE PLANS ARE SUBJECT TO CHANGE BY THE LOCAL AUTHORITIES.  
THE DRAWINGS ARE NOT TO SCALE



PCPL<sup>®</sup>  
REDEVELOPING HOMES  
REBUILDING COMMUNITIES



At PCPL, our core expertise and focus lie in the redevelopment of buildings. As we are not capital intensive, our company's funds are not tied up in land procurement, allowing us to concentrate solely on delivering top-quality building redevelopment projects.





## **SMALL AND MID-SEGMENT PROJECTS**

At PCPL, we excel in developing small and mid-segment projects, focusing on creating spaces that balance intimacy and community. Our projects are designed with meticulous attention to detail and a commitment to quality, ensuring each apartment meets the highest standards. This approach allows us to deliver exceptional homes on time, every time, creating living environments that are both comfortable and elegant.



## **IN HOUSE ARCHITECTURAL TEAM**

The Company's in-house architects plan and design each project from inception, taking into consideration government rules and regulations as well as society's requirements. Additionally, they carefully assess the marketability of each flat to ensure that they meet the needs and preferences of potential buyers.



## **PERMISSIONS FIRST POLICY**

To mitigate risks and prevent any potential delays caused by changes in rules or market conditions during construction, we adopt a "permissions first" policy, ensuring that all necessary approvals are obtained before commencing any building work.



## **YOUNG TEAM**

PCPL prides itself on timely delivery of projects, thanks to a team of fully committed professionals that includes young and dynamic individuals from diverse backgrounds, as well as a team of trusted consultants and contractors.

YOUR  
opulent  
abode



For Enquiries : 022 6276 9927 / 77



[www.pranavconstructions.com](http://www.pranavconstructions.com)

Registered Office: 1001, DLH Park, 10th Floor, S.V. Road, Opp. Goregaon MTNL, Goregaon (W), Mumbai - 62.



This Project has been Registered with MahaRERA under name of "REDEVELOPMENT OF OM MANIKANTA CHSL",  
Registration No.: P51800077168 available on <https://maharera.mahaonline.gov.in>