



Sai Empire

LIVE WITH THE NATURE

AMBEGAON (KH)

WHEN YOU ARE LOOKING FOR PEACE
NATURE IS ALWAYS THE ANSWER



ACTUAL PHOTO

BEST LOCATION IN AMBEGAON (KH)



Sai Empire
LIVE WITH THE NATURE

A ray of light means hope, positivism.

It falls with tender density and gradually brightens up the whole world for us. Our eyes can touch the beauty of life, thus igniting the inner glow of our soul.

Sai Empire is such sacred light.

That gently caresses your life and adds a spectrum of vividly stunning shades to your persona.

Welcome to sai empire . The dawn of good life!





A Home that heralds the beginning of new way of Life





Sai Empire
LIVE WITH THE NATURE



Right Sized Homes



Sai Empire
LIVE WITH THE NATURE



2 BED HOMES

CARPET AREA
580.50 SQ.FT.

BALCONY AREA
123.00 SQ.FT.

CHARGEABLE AREA
950.00 SQ.FT.



2 BED HOMES



Right sized homes meet the needs of their occupants while promoting energy efficiency, adaptability and affordability.

Apartments that have been design with minimum passage areas, maximum natural lights and ample cross ventilation.

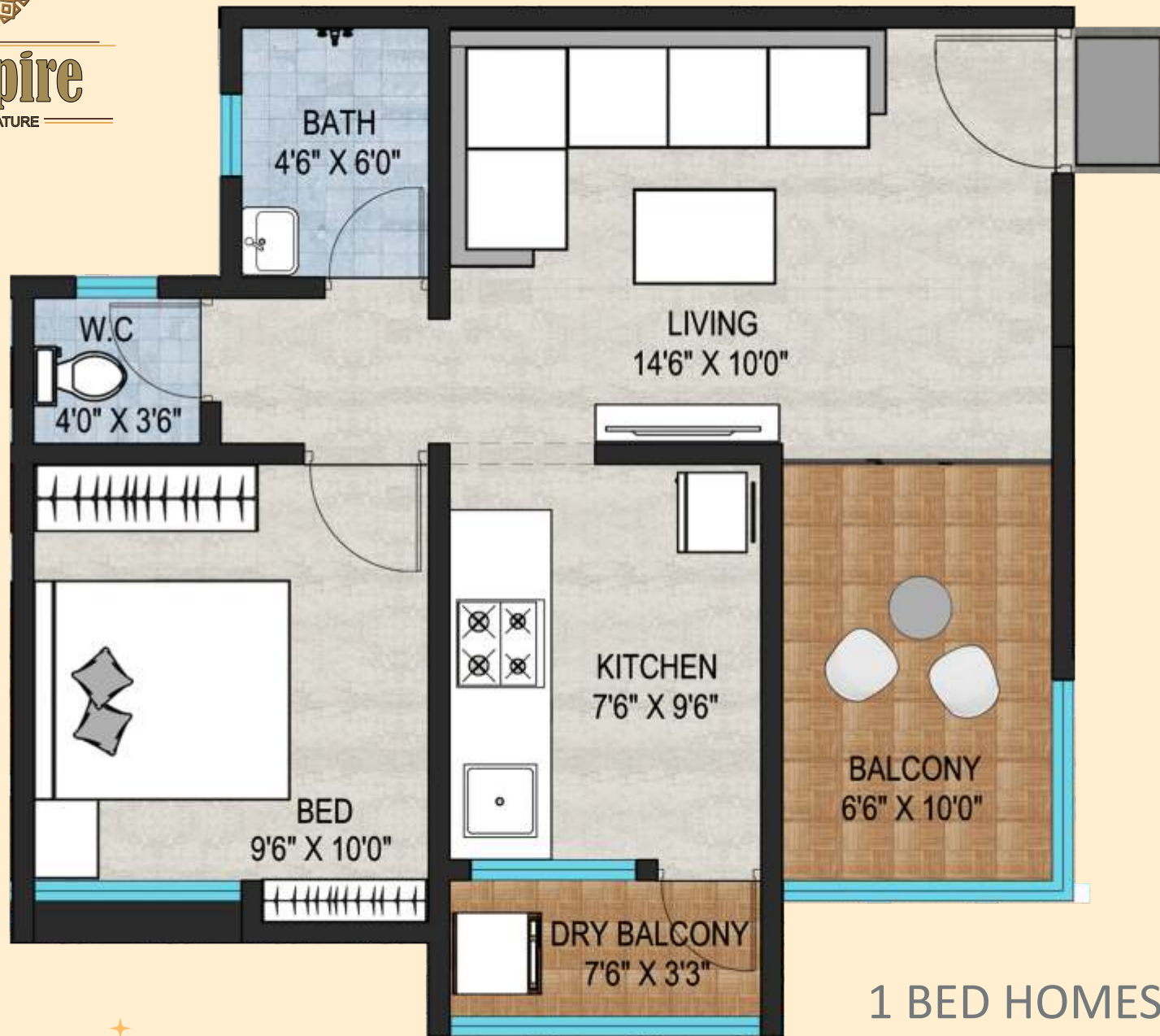
Right sized approach strives to improve “The places we called home ” in more sustainable manner.



Sai Empire

LIVE WITH THE NATURE

Right Sized Homes



1 BED HOMES

CARPET AREA
388.25 SQ.FT.

BALCONY AREA
89.50 SQ.FT.

CHARGEABLE AREA
645.00 SQ.FT.



1 BED HOMES



With all necessary furniture in place, these flats look like neat & tidy home. Kitchen comes with Dry balcony is very useful for working couples. Ample light & ventilation to kitchen means, your spouse will enjoy cooking in this Kitchen & food will be hygienic & yummy. Fresh air coming from windows will boost your spirit,
“ THANKS TO THE FRESH BREEZE COMING FROM THE WINDOWS.”



TYPICAL FLOOR PLAN FIRST TO EIGHT

FLAT TYPE	CARPET SQ.FT	BALCONY SQ.FT	BUILT.UP SQ.FT	CHARGEABLE SQ.FT	
1 BHK	388.25	89.50	477.75	645.00	
2 BHK	580.50	123.00	703.50	950.00	



CHILDRENS PLAY AREA



DECORATIVE ENTRANCE GATE



Enter the world of
Sai Empire
to experience real privilege.



SPECIAIOUS PARKING



Where
each day is
Rejuvenating



Sai Empire Club House is designed and crafted skilfully for the new age urbane lifestyle. Having is courtyard enriched with ample lifestyle features, it enhances the way of living of the inmates by making rejuvenation a part of their daily life.



Enjoy the **lifestyle** of **your dreams**

At the end of the day, what a soul desires from home is the inner calm and peace. Located in the beautiful location that's lavishly surrounded by the greens outside enwrapping the serene atmosphere inside, Mountain is a perfect place to begin Dream Life.







Where Live peace &
Serenity



Sai Empire

LIVE WITH THE NATURE

SPECIFICATION

ELECTRICAL

- Concealed electrical copper wiring.
- Modular switches of reputed brand.
- Adequate number of electrical points
- TV point in living room .
- AC point in Master bed rooms.
- E bike charging point in Parking

WINDOWS

- UPVC/Powder coated aluminum sliding windows with mosquito nets and M.S. Grill.
- Black granite window sills in photo frame style.

DOORS

- Large size Attractive main entrance door with both sides Veneer and wooden door frame.
- All bedrooms , terraces doors with both side laminated
- Toilet door frames in Black granite with Fiber door panels.
- Powder coated Sliding door for terrace

KITCHEN

- Black Granite kitchen platform with stainless steel sink.
- Attractive kitchen dado with tiles up to full height.
- Water purifier provision in kitchen.

TOILETS

- Designer glazed tiles dado up to full height.
- Renowned brand fixtures and fittings.
- Concealed Corrosion resisting internal plumbing.
- Hot and cold water mixer
- Premium quality Toilet units in all toilets.
- Powder coated aluminum louvered windows with exhaust fan provision.

STRUCTURE

- Earthquake resistant RCC structure

LIFTS

- Six person cabin lift of standard make with backup.
- Decorative facade for lift entrance on each floor.

WALLS

- 6” thick external wall & 4” thick internal walls
- Sand face plaster externally and sanla finish Internally.

PAINTING

- Oil Bond Paint for internal walls.
- Apex paint for external walls.

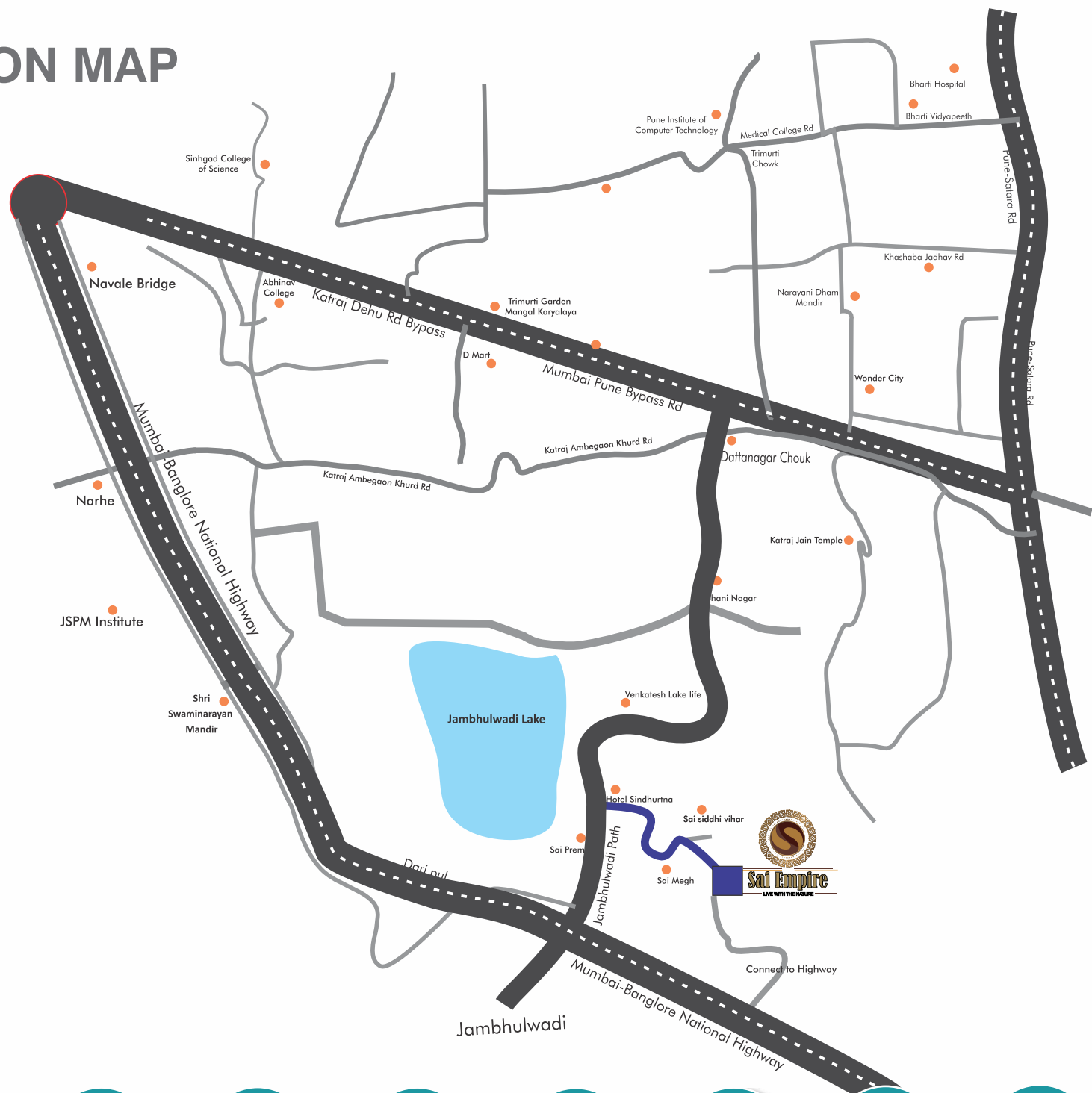
FLOORING

- Vitrified tile flooring of standard make in LIVING all Bedrooms and kitchen. with skirting.
- Anti skid flooring in washrooms and dry balconies.

AMENITIES

- **Multipurpose Hall in Club house.**
- **Indoor gym in Club house**
- **Party lawn with Beautiful flower Garden**
- **Children play area and Jogging track**
- **Shree Sai Temple**
- **Genrator backup for common lighting and lift.**
- **Ample Parking.**
- **Watchman cabin with cctv security system**
- **Rain Water Harvesting arrangements.**
- **solar system for hot water**
- **Well equipped Fire Fighting System.**
- **Big entrance gate with Watchman cabin.**

LOCATION MAP



SCHOOLS, COLLEGES
& INSTITUTES



MARKET



QUICK HIGHWAY
ACCESSIBILITY



HOTELS



HOSPITAL



SECURITY



CAR PARKING



BANK & ATM

In the Vicinity of 5 minutes....

- Highway Connectivity
- Rajiv Gandhi Zoological Park
- Katraj Bus Depo
- Shri Swaminarayan Temple
- Bharti Vidyapeeth
- Navale Hospital
- Abhiruchi Mall/Multiplex
- JSPM Institute/ Sinhgad Institute
- D Mart
- Hospital's
- Temple's
- Reliance Mall

Project By



SHREE SAI
CONSTRUCTIONS



saiempire3200@gmail.com



BOOKING CONTACT

950 365 3200, 950 358 3200

SITE ADDRESS :- S.NO.59/2,SAI NAGAR,NEAR JAMBHULWADI BRIDGE,AMBEGAON (KH),PUNE-46

THIS PROJECT IS UNDER RERA REGISTRATION NO IS P52100033090. PROJECT NAME- SAI EMPIRE AND DEVELOPERS NAME - SHREE SAI CONSTRUCTION.

Disclaimer: The visuals and information contained in this brochure are indicative of the kind of development that is proposed subject to the approval of the authorities. In the interest of the project and/or continuing improvement, the promoters/developers reserve the right to change plans, specifications or features without prior notice or obligations. This brochure is issued for guidance only and does not constitute part of an offer or contract. CONTENT OF THIS BROUCHER IS COPYRIGHT ANY MISSUSE WILL BE ILLEGAL OFFENCE ALL RIGHTS ARE RESERVE 'STAR MEDIA GROUP' THANK YOU!!