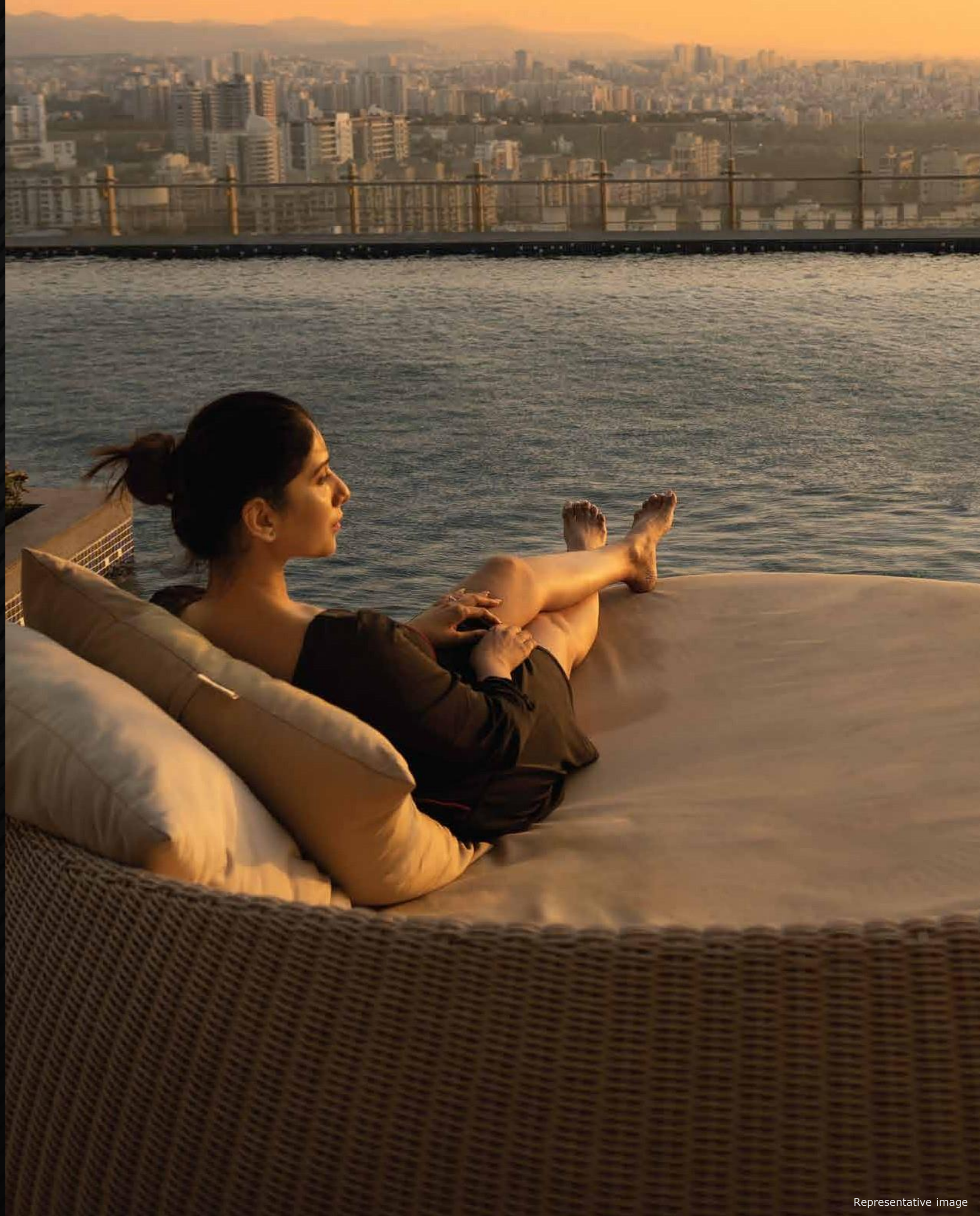




# GREATNESS REIGNITED

EXPERIENCE THE EPIC COMEBACK!

CALL FOR MORE DETAILS : 8007145150 ; 9209689115



Representative image





**RAMA GROUP™**

## A JOURNEY OF PASSION, INNOVATION, AND EXCELLENCE.

With the focus on uncompromised quality, the brand has helped the dream of owning a lavish and comfortable home a reality for thousands of families.

---

Understanding that buying a home is an emotional decision, the brand approaches each project by adhering to the highest standards of construction and service delivery, ensuring that the customers feel heard and valued.

---

Their story is not just one of business successes but also of touching lives and creating homes that are filled with joy, love, and memories



# THE GREATEST

## OFFERING OF ALL TIME



UNVEILING SOON AT

# THE GREATEST LOCATION

OF PUNE WEST



# GREATNESS IS CONTAGIOUS,

AND ONCE SOMEONE ACHIEVES IT,  
IT CREATES A WAVE THAT BUILDS ON ITSELF.



Representative image

When you rub shoulders with greatness it seeps  
into you and echoes through space and time.

Which is why we say, greatness fuels greatness.

Which is why when we created a great history,  
we knew the greatest was on its way!





# OUR SUCCESS STORY SO FAR

Embarking on a journey like no other, G.O.A.T.'s first chapter set the stage for greatness. From the very outset, the G.O.A.T. carved a legacy that would stand the test of time. With unwavering commitment, it showcased unparalleled brilliance, leaving everyone in awe.

As we celebrate this awe-inspiring journey we invite you once again to embrace a lifestyle where every detail exudes sophistication and comfort, where every corner mirrors greatness.



# HOLD YOUR BREATH FOR G.O.A.T. 2.0

**Now bigger, better, bolder.**

Prepare to be enthralled as the icon makes an extraordinary comeback, igniting the world with unrivalled brilliance and leaving an indelible mark on the stage of greatness.

Embrace the grandeur of this momentous return, as the G.O.A.T. takes its place at the pinnacle, and redefines what it means to be legendary.



CODENAME

**G.O.A.T.**  
GREATEST OF ALL TIME



# A GLIMPSE OF THE TOWERING GREATNESS

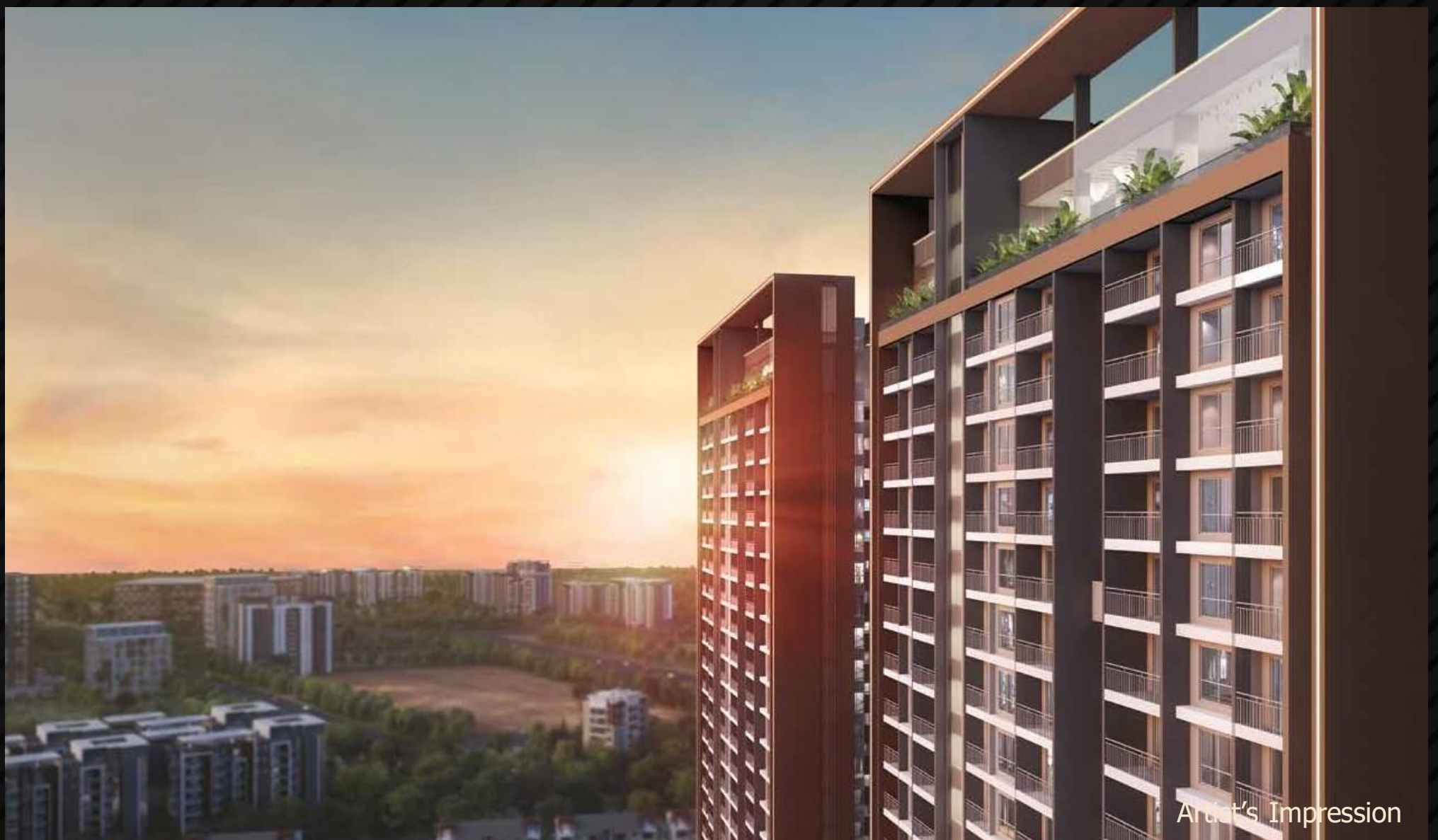


Artist's Impression



# PROJECT HIGHLIGHTS

- | 2 Towers - 30 Storeys High
- | Best-In-Class Internal Specifications
- | Premium 2BHK, 3BHK and 4BHK Apartments With Biggest Carpet Areas
- | Retail High Street With 150+ Showrooms and Shops Within Project Premises





# AMENITIES

**ZONE 1**

**20+**

**GROUND PLAZA  
FEATURES**

**ZONE 2**

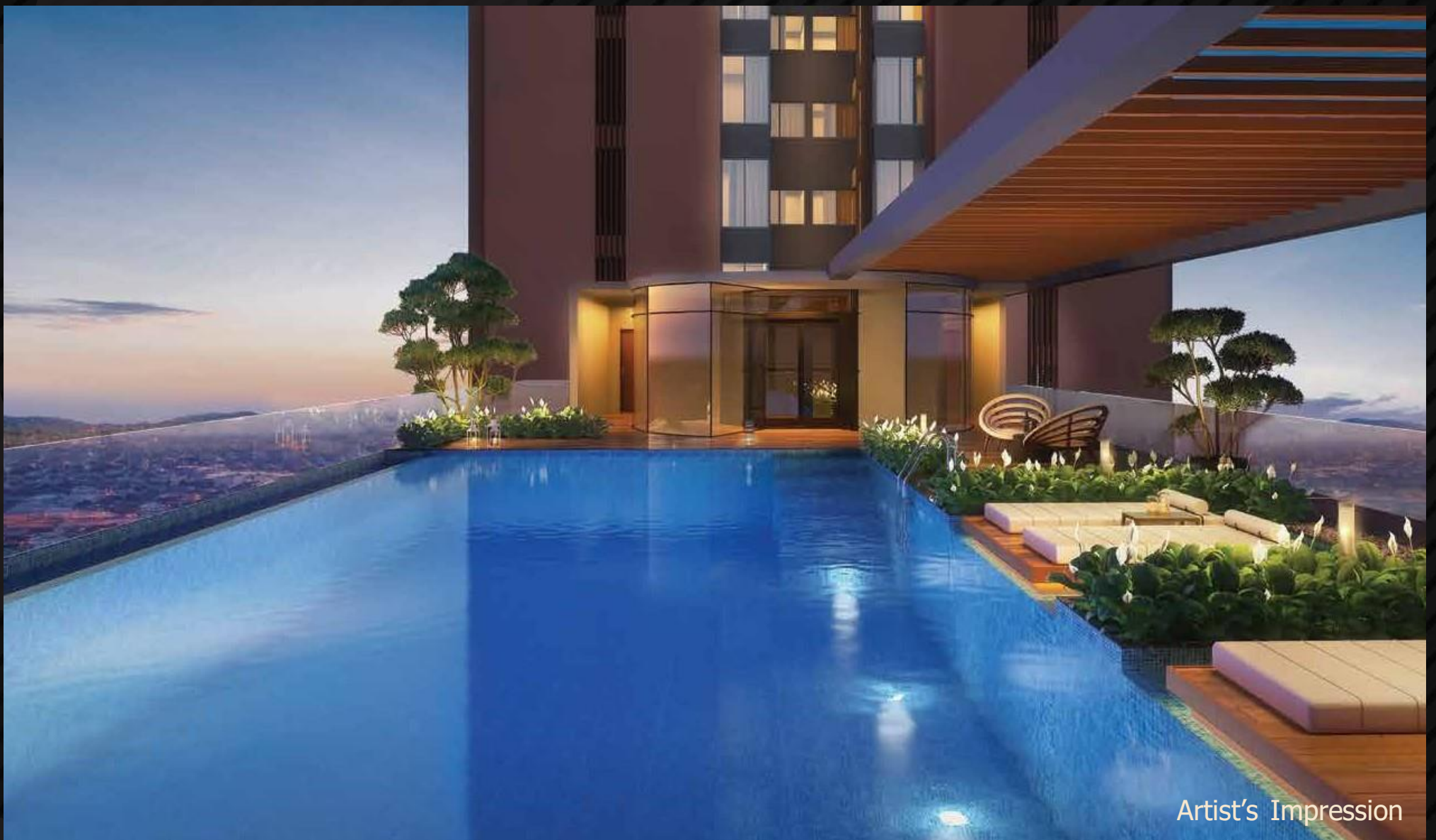
**20+**

**CLUB HOUSE AND  
PODIUM AMENITIES**

**ZONE 3**

**7+**

**SKY HIGH  
LUXURIES**



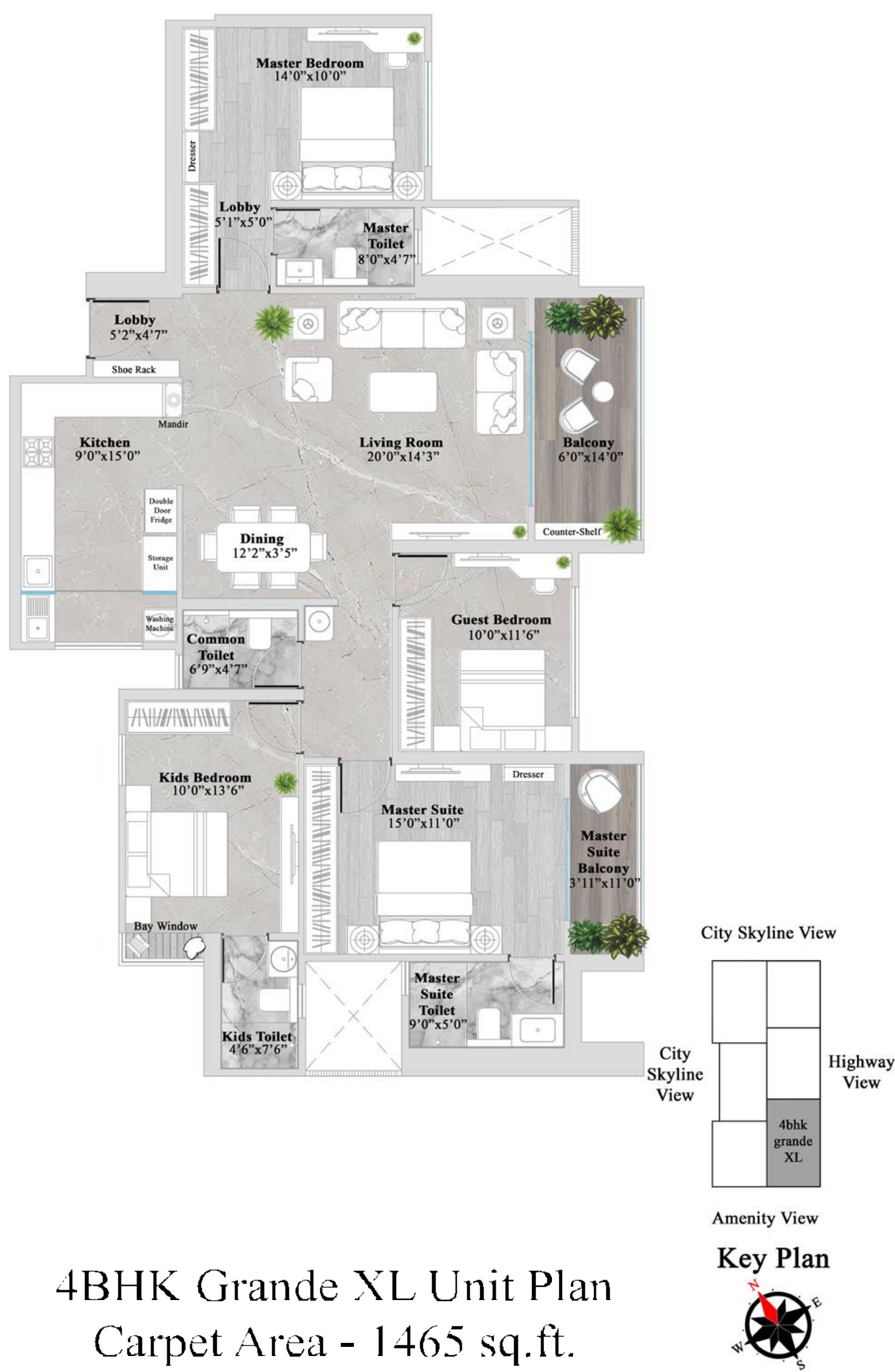


# 4 BHK GRANDE XL

## UNIT PLAN

### Key Highlights

- Master suite with suite toilet and balcony
- Bay window concept in kids bedroom
- Lavish living room with separate dining area
- A 15x9 ft. kitchen with an L-shaped platform
- Full length wardrobes in all bedrooms
- Marble finish vitrified tiles in entire apartment

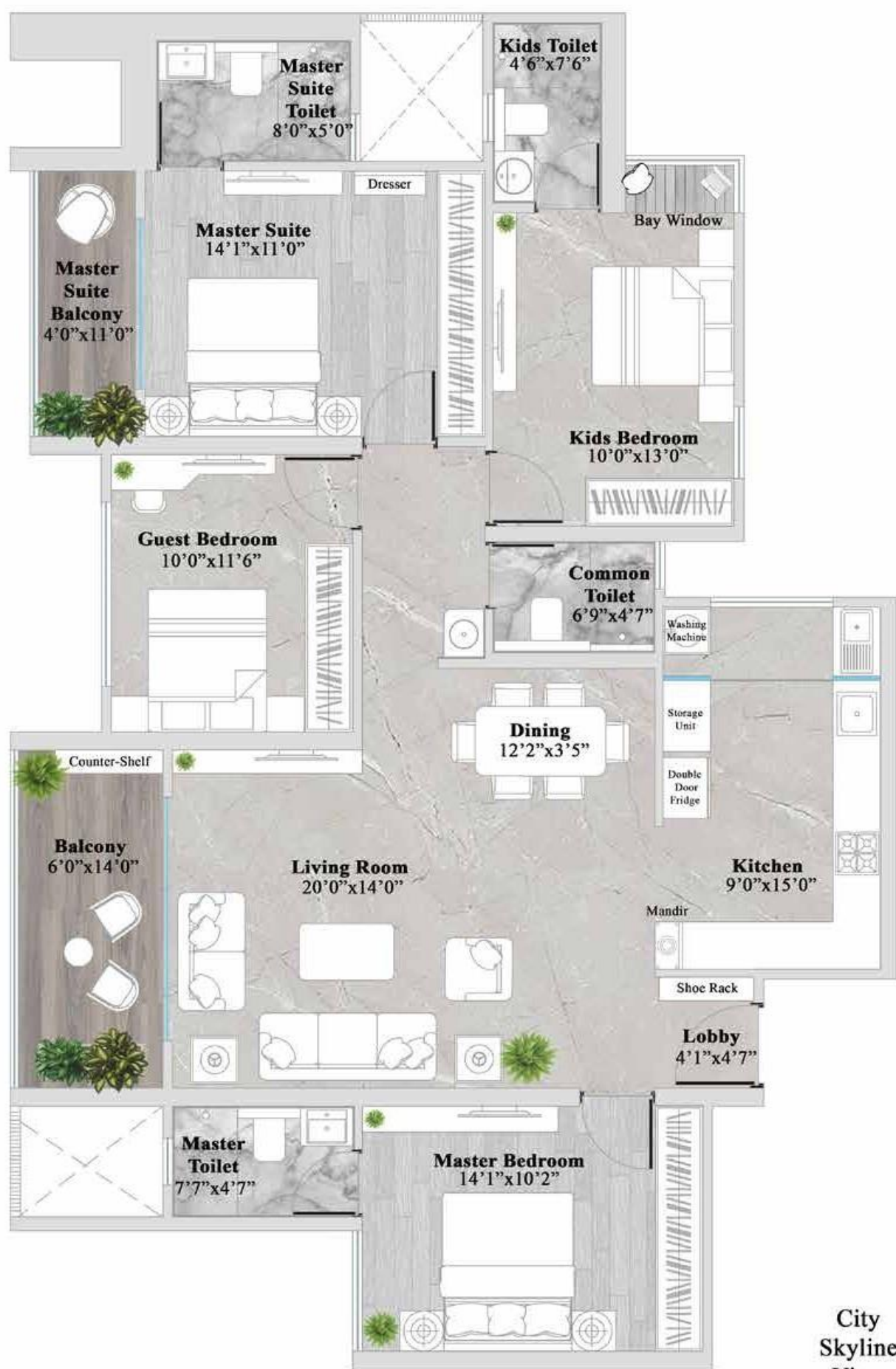




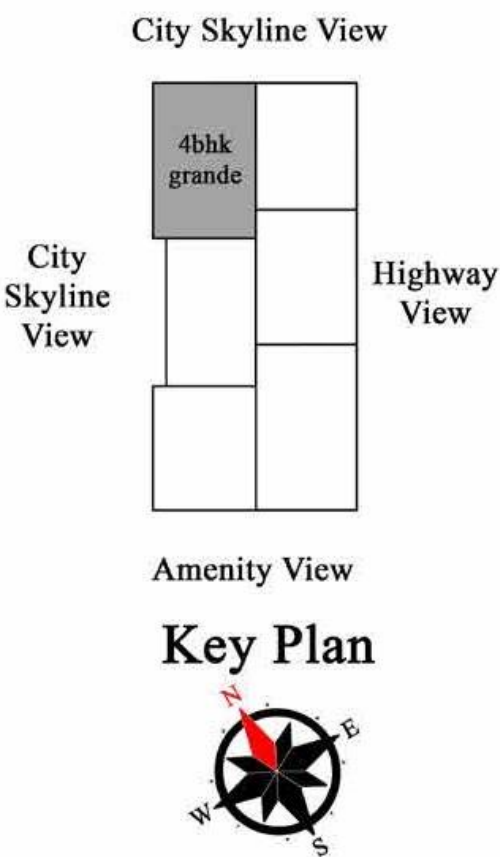
# 4 BHK GRANDE UNIT PLAN

## Key Highlights

- Master suite with suite toilet and balcony
- Bay window concept in kids bedroom
- Lavish living room with separate dining area
- A 15x9 ft. kitchen with an L-shaped platform
- Full length wardrobes in all bedrooms
- Marble finish vitrified tiles in entire apartment



4BHK Grande Unit Plan  
Carpet Area - 1423 sq.ft.



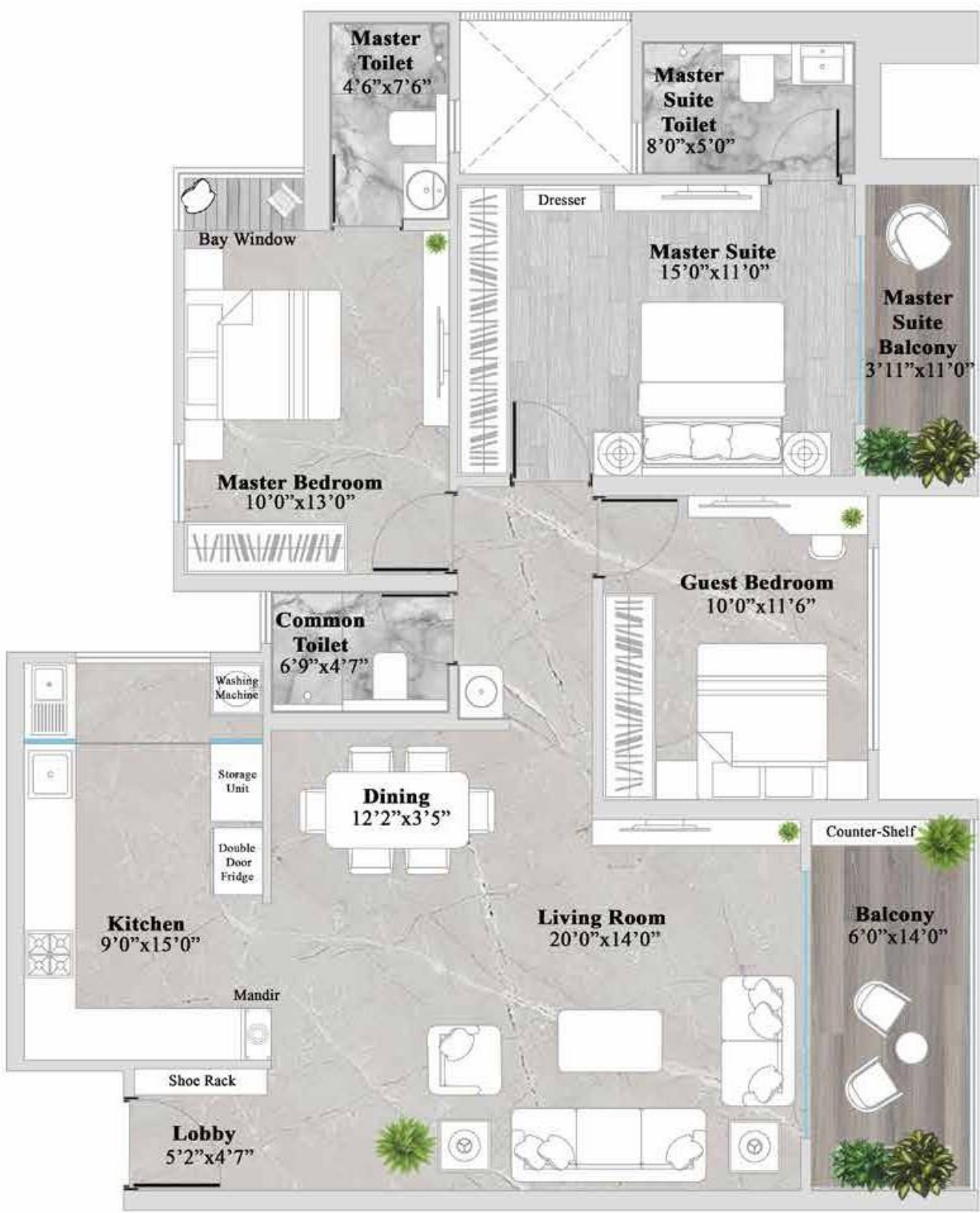


# 3 BHK GRANDE XL

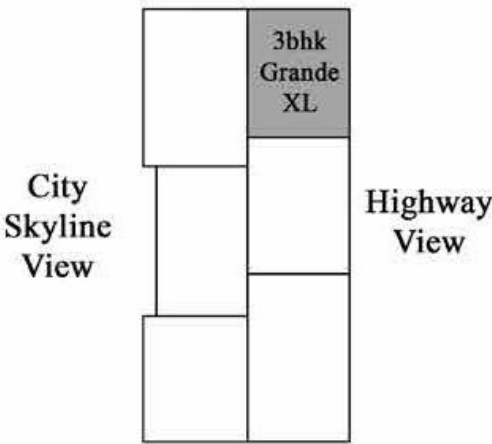
## UNIT PLAN

### Key Highlights

- Master suite with suite toilet and balcony
- Bay window concept in master bedroom
- Lavish living room with separate dining area
- A 15x9 ft. kitchen with an L-shaped platform
- Full length wardrobes in all bedrooms
- Marble finish vitrified tiles in entire apartment
- Top notch internal specifications



City Skyline View



Amenity View

Key Plan



3BHK Grande XL Unit Plan  
Carpet Area - 1241 sq.ft.

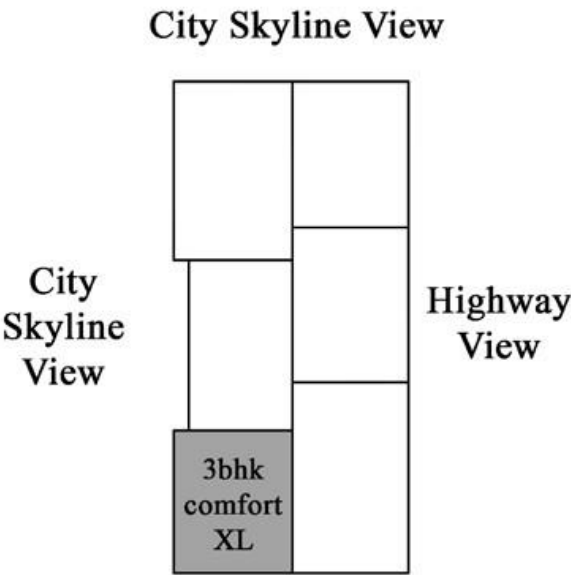
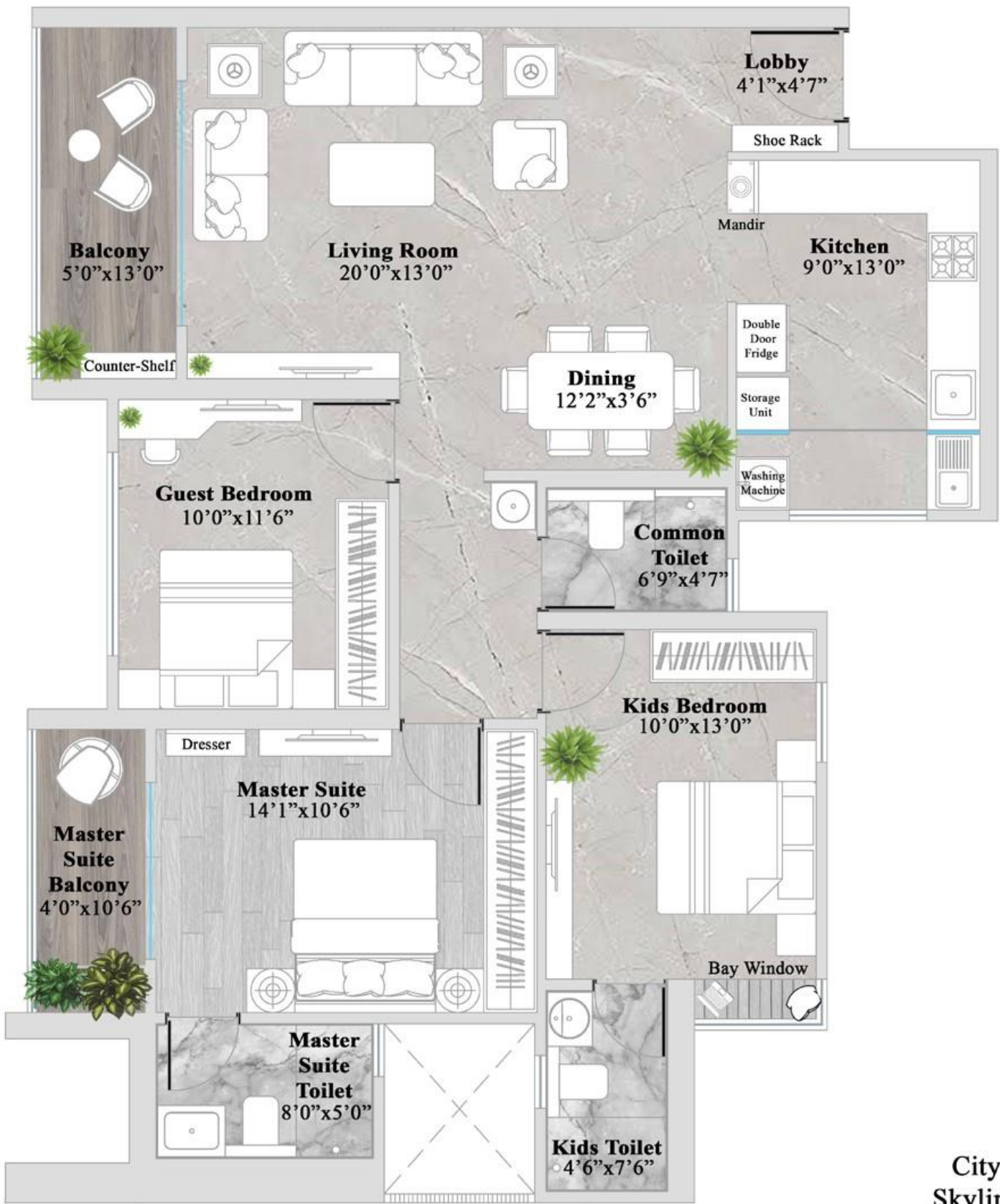


# 3 BHK COMFORT XL

## UNIT PLAN

### Key Highlights

- Master suite with suite toilet and balcony
- Bay window concept in master bedroom
- Lavish living room with separate dining area
- A 13x9 ft. kitchen with an L-shaped platform
- Full length wardrobes in all bedrooms
- Marble finish vitrified tiles in entire apartment
- Top notch internal specifications



Amenity View

### Key Plan



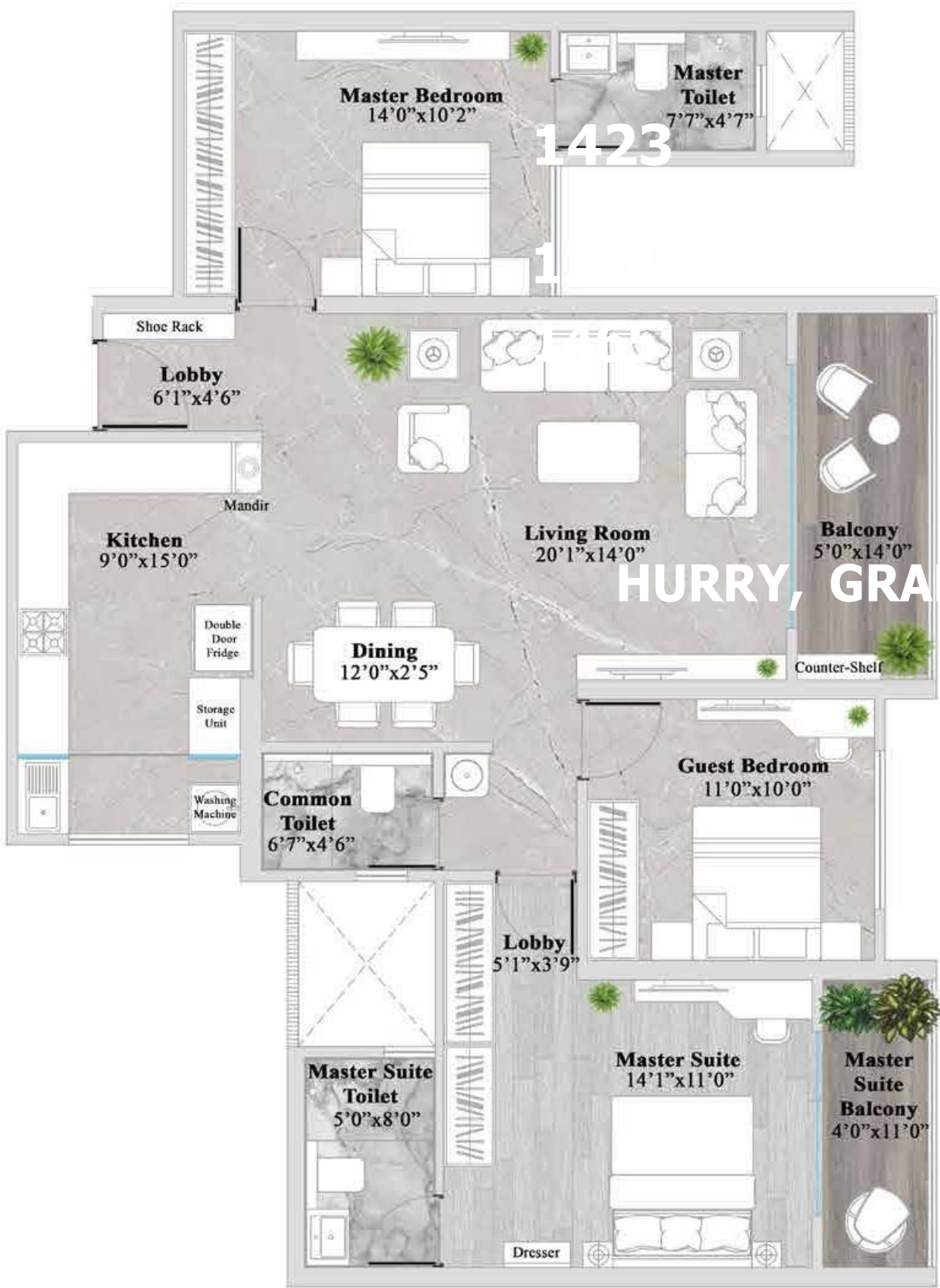
3BHKComfort XL Unit Plan  
Carpet Area - 1157 sq.ft.



# 3 BHK GRANDE UNIT PLAN

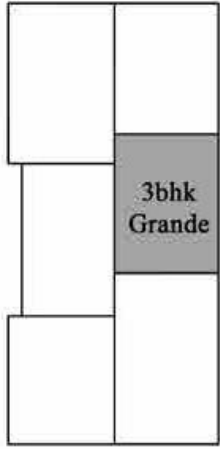
## Key Highlights

- Master suite with suite toilet and balcony
- Bay window concept in master bedroom
- Lavish living room with separate dining area
- A 15X9 ft. kitchen with an L-shaped platform
- Full length wardrobes in all bedrooms
- Marble finish vitrified tiles in entire apartment
- Top notch internal specifications



City Skyline View

City Skyline View



Highway View

Amenity View

Key Plan



3BHK Grande Unit Plan  
Carpet Area - 1204 sq.ft.



# KEY DISTANCES

## WORKSPACES

Upcoming World Trade Center	3 mins
Upcoming IT Park	5 mins
Hinjewadi IT Park	10 mins

## EDUCATION

Indira Group of Institutes	1 Min
Dr D.Y. Patil college	1 Min
Akshara International school	3 Min
Euro School	5 Min

## HEALTHCARE

Lifepoint Multispeciality Hospital	9 mins
Aditya Birla Memorial Hospital	12 mins
Jupiter Hospital	15 mins
Ruby Hall Clinic, Hinjewadi	17 mins

## CONNECTIVITY

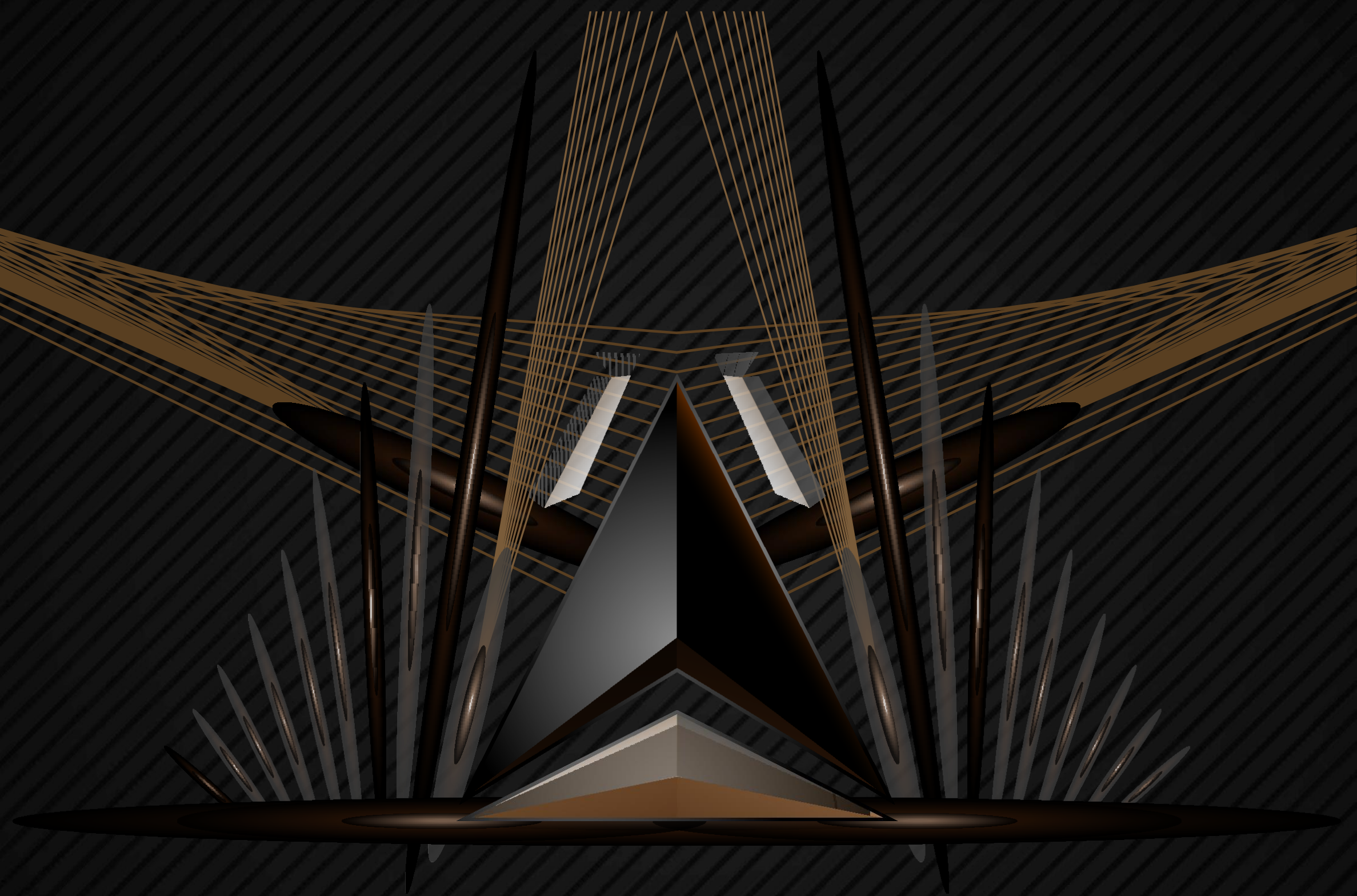
Bhumkar Chowk	1 min
Pune- Mumbai Expressway	5 mins
Wakad Metro Station	8 mins
Balewadi High Street	12 mins

## KEY AREAS

Wakad	3 mins
Ravet	5 mins
Balewadi	12 mins
Hinjewadi	12 mins
Baner	15 mins
Bavdhan	18 mins
Aundh	20 mins
Kothrud	20 mins



**METRO LIFE AWARDED**  
**THE BEST**  
**MIXED-USE**  
**PROJECT**  
**OF THE YEAR 2020**



**1000+**  
Residential units

**30+**  
High end showrooms

**150+**  
Retails shops

**150+**  
A grade office spaces

**7+**  
Rooftop restaurants





# RAMA GROUP™

10

Prestigious  
Awards

50+

Projects  
Delivered

32+

Years Of  
Experience

12000+

Happy Families

12

Million sq.ft.  
Delivered





**RAMA GROUP™**



Scan to embark on a great journey towards  
the greatest location of West Pune.