



ATLANTIC

INSPIRED BY WORLD TRAVELS



SPEARHEADING INDIAN REAL ESTATE AS A FUTURE FORWARD DEVELOPER

A renowned name in the real estate of Pune, Bangalore, and Mumbai, Pride Group has been a leader in developing state-of-the-art commercial and residential projects since its inception in the mid-1990s.

The company was founded by Mr. Arvind Jain with the vision that home buyers would shift their preference from traditional homes to premium and luxury apartments along with a quality lifestyle. The Group is known for its bold contemporary designs, highest attention to detail, excellent engineering standards, and uncompromised focus on ethics.

Pride Group goes beyond giving people a better place to live: distinctive communities of lasting values are created, a solid return for investors is delivered, and a culture of respect and empowerment is forged for its employees.

Development is the cornerstone of Pride Group's success. Our single-minded purpose is to ensure that we deliver our projects to the highest standards and provide superior customer service across the customer's journey.

It has been one of the companies that has earned a distinctive place in the consumer's mind, as both an innovative and a reliable development firm. So far, we have delivered 40 million sq. ft in residential and 2 million sq. ft in commercial space.

The group has also forayed into the luxury hospitality segment with its extensive chain of "Pride Group of Hotels" setting milestones in hospitality standards in the process.



TO PUT GLORY IN YOUR LIFE AND PRIDE IN YOUR HEART

Dear Friend,

The world now is always putting fascination in your eyes and your lives, every day. With its grand collection of majestic objects, be it globally acclaimed art or architecture, bestseller of the hardcover or the silver screen, or even gourmet food, there is no shortage of things that can dazzle you. Yet, even among them are only a few that truly resonate with your way of life.

Atlantic, our new dream, is that artistic structure that not only echoes your soul, but also stands as a fresh new majestic experience in your life. It is a grand entry into a world of luxurious lifestyle, where revelry is in everyday life.

But Atlantic is not simply that, for it is also a haven of safety and comfort with its smart automated homes. Its vast, airy apartments are designed to make you feel at ease at all times of the day, whatever your need be.

A handwritten signature in black ink, appearing to read 'Arvind Jain', with a stylized, flowing script.

ARVIND JAIN

Managing Director, PRIDE WORLD CITY



A GLOBAL LIFESTYLE HOUSING 5000+ HAPPY FAMILIES

A sprawling 400 acres of space, a testimony of architectural wonder blended with intricate designs and thoughtful planning. Pride World City welcomes a lifestyle of balanced living.

This integrated township has within it every possible amenity to meet your desires, needs, and wants. Be it luxury and premium residential living or rowhouses; shopping malls or

hospitals; schools or workplaces; Pride World City has it all. It is a complete world on its own.

Already the reason for the smiles of 3000+ happy families, Pride World City envisions to bring home an international standard of living, and to set a benchmark for the happiness quotient that a residency can bring into people's lives.

ONGOING

Row Houses | Bungalows | High Rises | Entertainment Zone

UPCOMING

World-class Sports Academies

Petrol Pump | Bus stand | Police station | Post office | Clubs & Pubs and more



DHANORI LOHEGAON ROAD POINT OF PCMC & PMC

One of the major infrastructure projects which will give a positive impact on real estate market of Charoli is the proposed 170km Ring Road around Pune and Pimpri – Chinchwad. This strategic location is in the centre of the larger Pune Metropolitan Area and is poised to be the best suburb of Pune.

KEY LOCATIONS OF PMC:

VIMAN NAGAR	15 MINS	WAGHOLI	25 MINS	BUND GARDEN	30 MINS
YERWADA	15 MINS	KOREGAON PARK	25 MINS	EON IT PARK	32 MINS
PHOENIX MALL	20 MINS	KHARADI	30 MINS	SHIVAJI NAGAR	35 MINS
KALYANI NAGAR	20 MINS	KHADKI	30 MINS	MAGARPATTA	40 MINS

KEY LOCATIONS OF PCMC:

BHOSRI MIDC	20 MINS	ELPRO INTERNATIONAL	
CITICARE HOSPITAL	25 MINS	SCHOOL	30 MINS
VIBGYOR ROOTS			
AND RISE	25 MINS	ELPRO CITY SQUARE	30 MINS
P.C.M.C MULTISPECIALITY HOSPITAL	25 MINS		

HOSPITALS


ORCHID HOSPITAL	3.2 KMS
CT NURSING HOME	5.4 KMS
DHANWANTARI HOSPITAL	7.7 KMS

SCHOOLS

D Y PATIL SCHOOL OF ENGINEERING	950 MTR
JIS SCHOOL	4.8 KMS
KENDRIYA VIDYALAYA	5.9 KMS

FUEL STATIONS

M D MOZE PETROLIUM	4.2 KMS
MAULI PETROLEUM & CNG STATION	6.3 KMS



In the era of online streaming and binge watching you have stopped being wonder-struck. Larger than life moments are being weaved for your delight. Nothing can create aura for you. Masterpieces are breaking records every weekends. Classics are being re-watched many times. Elegance visits your dream every night.

BUT WAIT
THE ERA OF AURA IS
NOT OVER YET

PRESENTING
A NEW ERA OF
WONDER



ATLANTIC

INSPIRED BY WORLD TRAVELS



HAVE YOU EVER
SEEN SUCH
LUXURY IN THE
FORM OF
ARCHITECTURE?



ATLANTIC

A testament of grace & finest
luxury. With aesthetic
craftsmanship, the apartments take
expansive living to the next level.

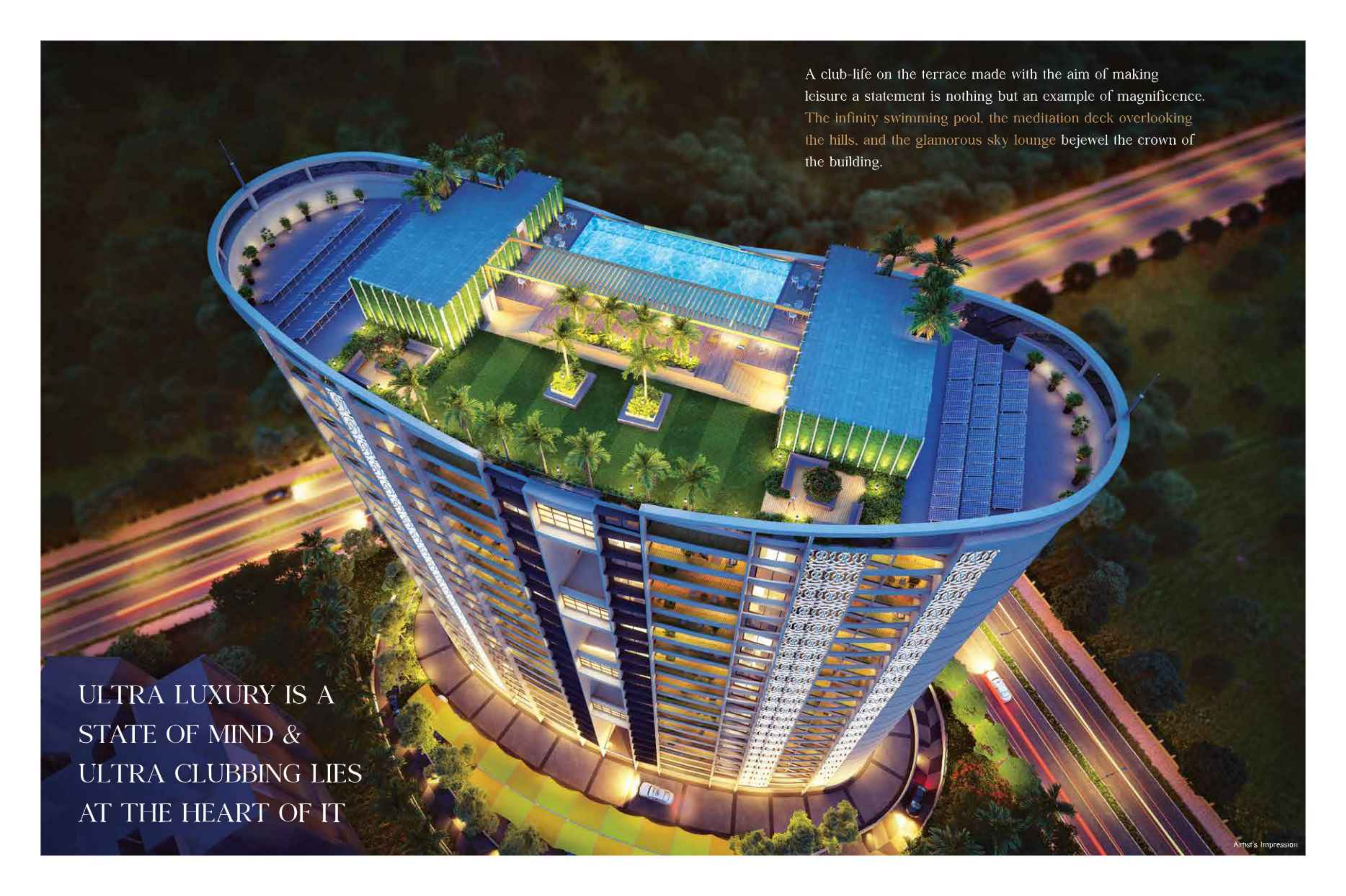
3/4 Bedroom Signature Apartments
4 Bedroom Duplex





YOUR FUTURE HOME CAN'T BE ANYTHING BUT LUSTROUS

Architecture is the first thing that reflects the residents' mind. The circular design on the outer surface is created to embrace maximum sunlight and air at every level. Simultaneously, the look exudes uber-luxury that has made it a work of art.



A club-life on the terrace made with the aim of making leisure a statement is nothing but an example of magnificence. The infinity swimming pool, the meditation deck overlooking the hills, and the glamorous sky lounge bejewel the crown of the building.

ULTRA LUXURY IS A
STATE OF MIND &
ULTRA CLUBBING LIES
AT THE HEART OF IT

TOGETHER BENEATH THE SKY
CROSS YOUR PATHS



Artist's Impression

Infinity Edge Swimming Pool



Conceptual Image

Toddlers' Pool



Electronic Video Games

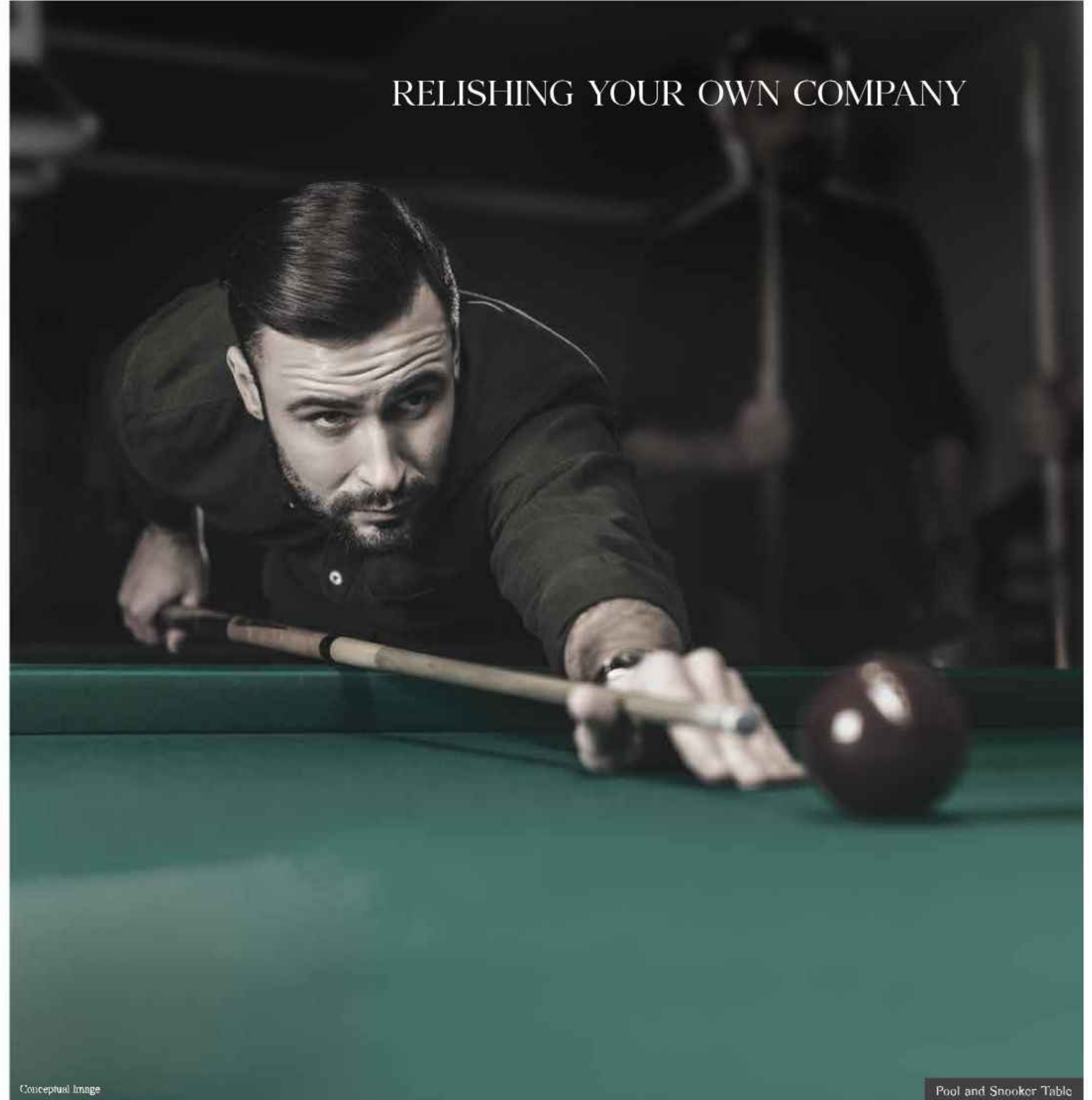
MULTI-LEVEL AMENITIES

Electronic Video Games (7th Floor)

Chess/Carom Game Zone (12th Floor)

Pool and Snooker Table (17th Floor)

Indo-western Fitness Zone (22nd Floor)



RELISHING YOUR OWN COMPANY

Conceptual Image

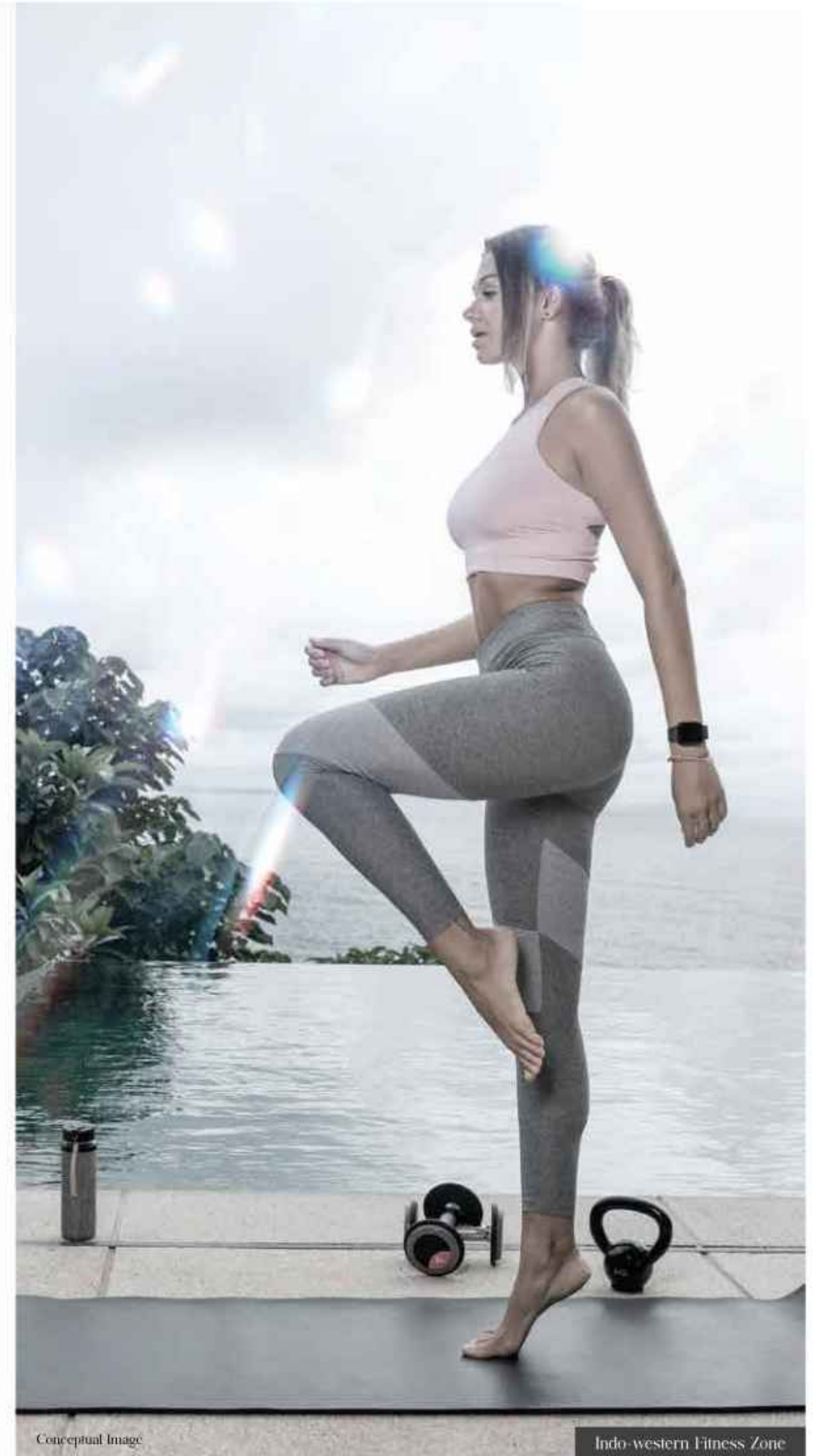
Pool and Snooker Table

LOUNGING WITH THE SKY



Conceptual Image

Sky Lounge with Café and Juice Bar



Conceptual Image

Indo-western Fitness Zone



GREEN LUXURY IS NO MORE
A RARE THING

A woman with long dark hair is lying in a white rope hammock, looking up at the sky with a serene expression. The background is filled with falling confetti in various colors, creating a festive and relaxing atmosphere.

MAKING THE SUN WITNESS YOUR EVERY UNWINDING

A series of extravagances that make your relaxation
hours exotic with a la carte amenities

AMENITIES

Multipurpose Lawn

Kids' Play Area

Grand Entrance Lobby

Amphitheatre

Jogging Track

Senior Citizen Plaza

Garden

Guest Lounge in the Lobby

Chit-chat Garden

Open Air Gym

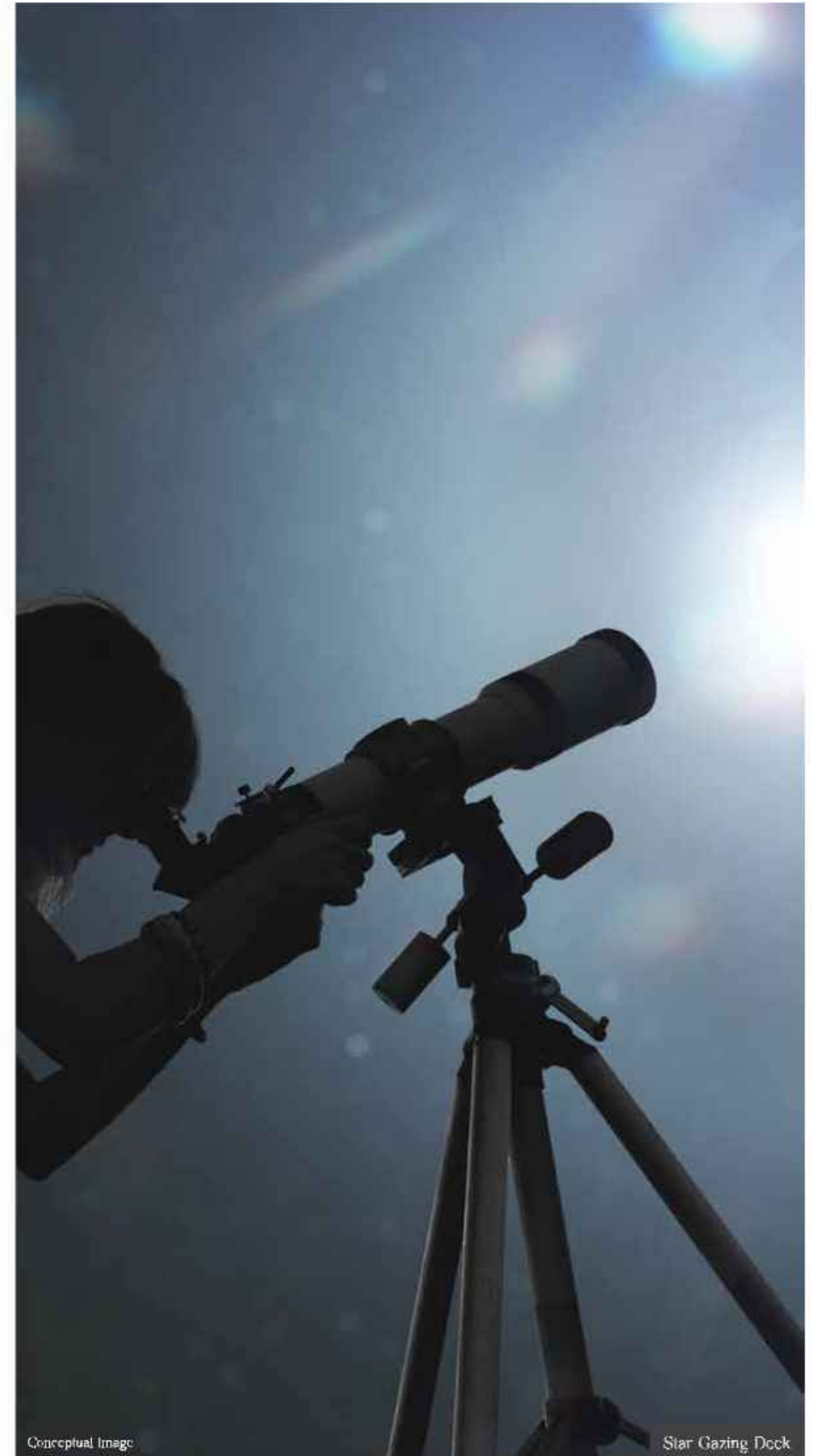
Multipurpose Hall at Basement Level

STAY IN TOUCH WITH
THE SOUL OF THE UNIVERSE



Conceptual Image

Yoga Deck



Conceptual Image

Star Gazing Deck



INTERIORS CRAFTED AS IF A MASTERPIECE IS BEING BORN

Bespoke interiors crafted to complement your way of living. As grand as you imagine, as convenient as you deserve, all rooms get sun-kissed while every corner gets flooded with natural breeze.

THE GRAND HOME SATIATES YOUR
INNER-SELF AT YOUR EVERY ARRIVAL



Conceptual Image

Airy & Ample Natural Light

3 sides open apartments

Well-ventilated and ample sunlight

Wooden flooring in master bedroom



Conceptual Image

Master Bedroom



LUXURY IS GETTING PROTECTED EVEN IN YOUR PRIVATE SPHERE

A future home is nothing if you
don't have automation integrated with it.
Be a part of this contemporary lifestyle
and embrace the benefits of smart living.

Smart Living

Home Automation with Alexa enabled

Smart Lock to Doors

Digital Locks

SPECIFICATIONS

Flooring & Tiles

- Wooden flooring in master bedroom (600X1200mm/ 900X1200mm)
- Vitrified tiles in all other bed rooms
- Antiskid tiles in bathroom, terrace and dry balcony
- Ceramic Dado tiles upto 7 feet in each bathroom
- Designer tiles flooring in each lobby

Kitchen

- Granite Kitchen platform with S.S Sink & provision for Aquaguard inlet with kitchen cabinet below platform & top unit above platform
- Piped gas system of MNGI. for each flat
- Fire extinguisher in kitchen of all flats

Bathroom Fittings

- Branded CP and Sanitary wares in all bathrooms
- Shower Glass partition in master and children toilet

Doors & Windows

- Veneer finished & Melamine polished doors for all flats
- Both side laminated doors for all toilets
- Branded fittings for all doors
- Aluminium windows: Anodized aluminium windows with aluminium/ PVC mosquito net in each flat (except toilet window)
- Aluminium louvered windows with provision for exhaust fan in each toilet

Electrical Fittings

- Concealed copper wiring with circuit breakers
- Branded electrical switches in all flats
- Provision for electrical point for inverter
- T.V & telephone point in hall and all bedrooms
- Provision of A.C points in hall & all bedroom
- Video door phone with color screen in each flat
- Automatic Lifts with SS finished car cabin
- Fire fighting system inside flats
- Smoke detection alarm system inside the flat
- Fire resistant doors for fire staircase

Paints

- Plastic emulsion paints for internal walls and ceiling
- Oil paint to railings
- Acrylic paint to exterior walls

Terrace & Balcony

- Laminated glass railing with SS handrail for all terraces & dry balconies
- Balcony ceiling: Wooden finish PVC ceiling
- Lighting in balcony from common supply

Structure & Walls

- Earthquake resistance RCC structure
- Walls in AAC Block work
- Gypsum internal wall finish



FIND YOUR WORLD
WITHIN A WORLD

SCHOOL

CLUBS & PUBS

MALL & MULTIPLEX

MULTI-SPECIALITY HOSPITAL

SPORTS CLUB

LIFESTYLE CLUB

SUPER MARKET

PETROL PUMP

POLICE STATION

POST OFFICE

AND MANY MORE

INDULGE.
EXPLORE. EXPERIENCE.

COMPLETED PROJECTS



ONGOING PROJECTS



DEVELOPED BY



SITE OFFICE

Adjacent to D.Y. Patil Knowledge City, Charholi BK Pune- 412105

T 020 2652 7000. +91 80555 47000 | W www.prideworldcity.com

CORPORATE OFFICE

Pride House. 5th Floor. Ganeshkhind Road, Near Pune University, Pune- 411016

T 020 6709 1000 | W www.pridegroup.net

MahaRERA No. P52100031007 | <https://maharera.mahaonline.gov.in/>

Scan for walkthrough



DISCLAIMER: This is not a legal document. The plans and photographs are conceptual and subject to change. The actual product shall vary according to the sole discretion of the developer. No claims shall be entertained by the developer depending on this material. Though the contents of the brochure have been compiled with the intention to provide information to the best of our knowledge, there may be some changes from time to time which may not reflect on the brochure. While enough care is taken by the developer to ensure that the information on the brochure is up to date and accurate, the users are advised to verify designs, plans, specifications, facilities, features, etc. with our team.