

Signature


Project by:



Sales Office: 47, Dattaguru Nagar, Azad Nagar, Andheri West, Mumbai, Maharashtra 400053

T: 022 1234 567

www.signaturebyperidot.com

 **MAHA RERA Registration No.: P51800046020**



MAHA RERA



VIRTUAL TOUR

Signature

BY PERIDOT
Builders and Developers | "Creating Elegance"

Note: All the amenities, plans and drawings are proposed, the Developers will have the right to delete or add if necessary. The discretion remain with the Developers. All the plans and amenities are subject to approval of the respective authorities.

47, Dattaguru Nagar, Azad Nagar, Andheri West, Mumbai.

Signature
BY PERIDOT
Builders and Developers | "Creating Elegance"

1 & 2 BHK Luxury Apartments

FIND YOUR SIGNATURE!

Welcome to Signature by Peridot!

Inspired by luxury, these 1 & 2 BHK apartments are uniquely crafted maximum space and light, with the best of living on the doorstep in affordable prices.

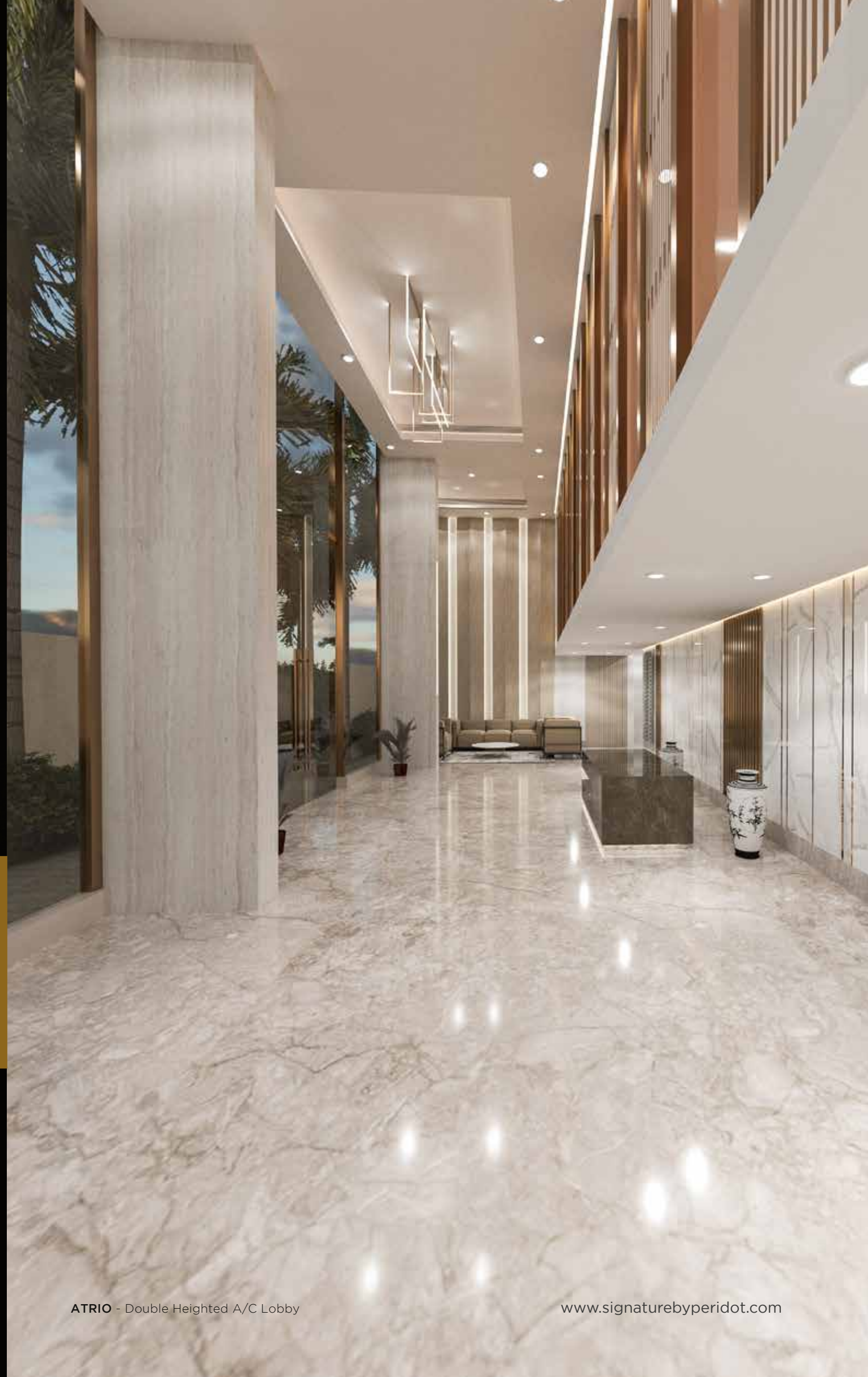
With a wealth of experience in Real Estate Development and Project Management, Shri. Bagwanji Patel, Shri. Gopal Agarwal and Shri. Piyush Patel proudly presents this best-in-class luxury apartments for the people who are looking for high end residences meticulously planned and executed to ensure nothing less than extraordinary.

ELEGANT RESIDENCE FOR QUALITY LIVING.



Make a lasting impression -

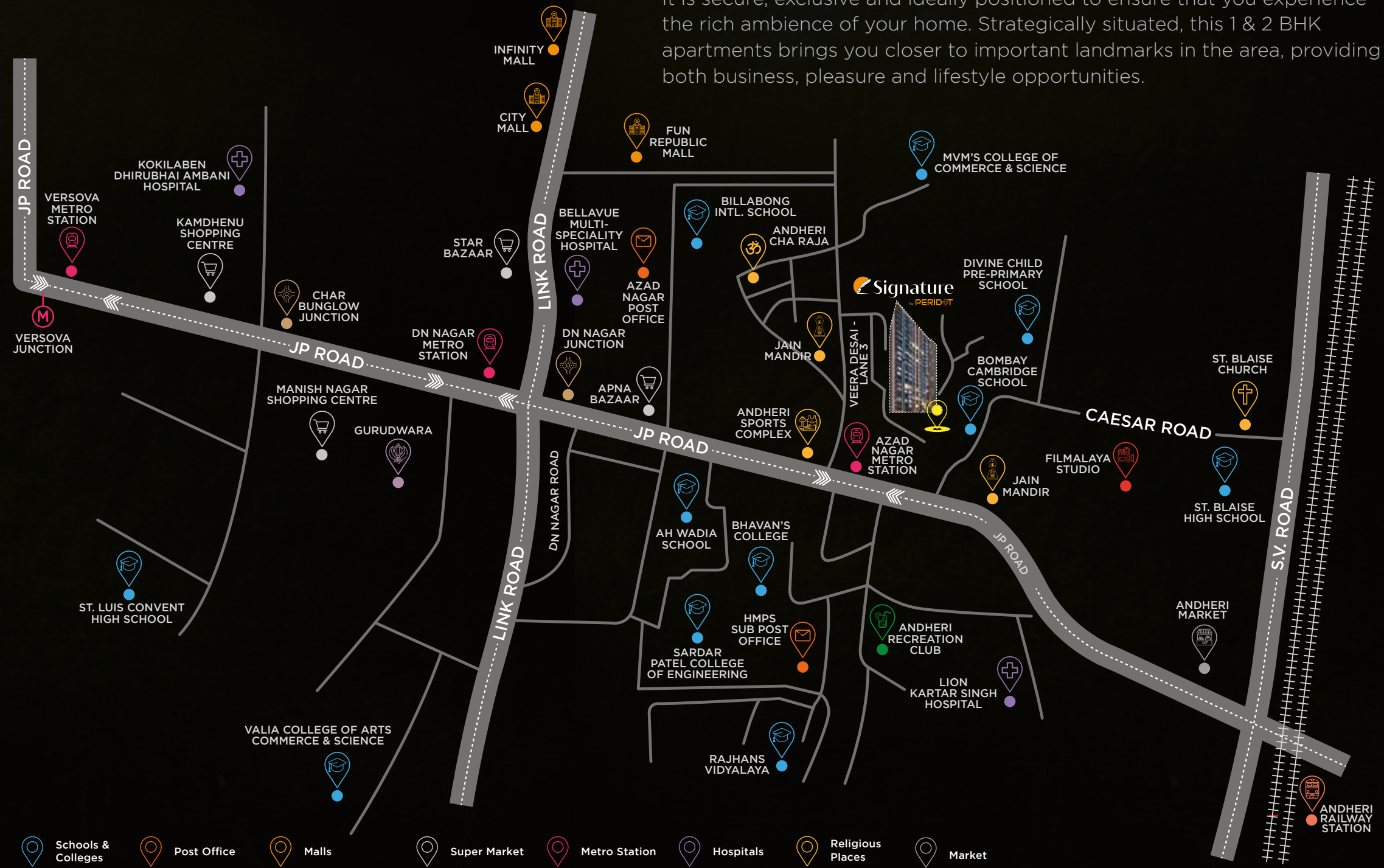
The spaciousness of our air-conditioned lobby is fabulous, it's rich interiors and double height offer you everything kingly. Expect nothing but the best from Signature.





PERFECTLY LOCATED!

Signature by Peridot is located near DN Nagar Metro station, Andheri West. It is secure, exclusive and ideally positioned to ensure that you experience the rich ambience of your home. Strategically situated, this 1 & 2 BHK apartments brings you closer to important landmarks in the area, providing both business, pleasure and lifestyle opportunities.



Location map is an Artist's impression and only for visual reference.

ONGOING PROJECTS



Need
High Resolution Image
Lotus Link Square
Andheri West



Need
High Resolution Image
Unity by Lotus Versova
Andheri West



Need
High Resolution Image
Lotus Residency
Oshiwara District Centre
Goregaon



Spend some quality time with your loved ones at Signature apartments, which brings camaraderie to your life and an oasis of happiness. Our amenities include double heighted lobby, reception at the ground level, well equipped multi-purpose room for work or children's activities or to entertain your guests, a state-of-the-art gym with latest equipments.



SPACIOUS LIVINGROOM



SPECIFICATIONS

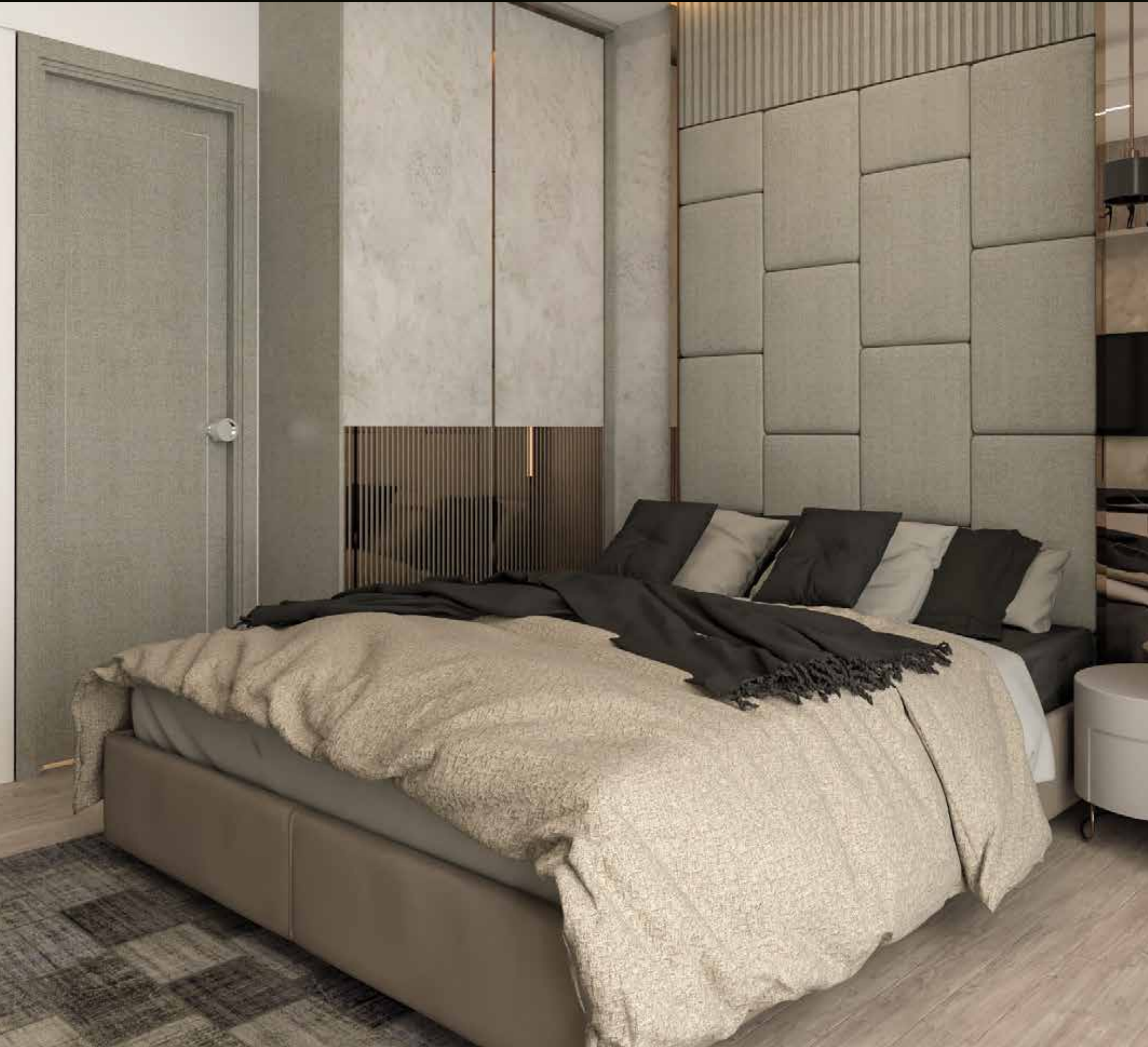
Flooring

- 800x800mm DC Vitrified tiles in Living, Dining and Bedroom areas
- Glazed Vitrified Dado Tiles over Kitchen platform
- Toilet wall Dado's Ceramic Tiles upto Ceiling heights
- Toilet floor Anti-skid Ceramic Tiles

Doors

- **Main Door:** Teakwood/Red Marandi Door Frame (Fire Resistant Coated Paint) and Door with Fire Resistant with both side laminate with superior quality stainless steel hardware and lock
- **Bedroom Door:** Hardwood/Pinewood with Flush Door shutter with both side laminate with superior hardware

EFFICIENTLY DESIGNED BEDROOM



SPECIFICATIONS

Doors

- Toilet Door: Hardware/Pinewood with flush door shutter with both side laminate with superior hardware

Windows

- Aluminium Sliding Windows: Two or three track as required with mosquito window mesh provision and 4-5mm thick glass
- Aluminium ventilators with provision for Exhaust and pin Head Glass louvers

KITCHEN THAT REFLECTS YOUR STYLE



SPECIFICATIONS

Kitchen

- Granite platform with Stainless Steel sink
- Ceramic Tiles Dado over Kitchen platform

Plumbing

- EWC with soft closure seat cover and Washbasin of white color (Jaguar/ Grohe/ Cera/ Hindware or equivalent make)
- CRVC/UPVC Pipe: Astral/ Prince/ Finolex

Electrical

- Electric cables and wires: Polycab/ RR Kabel/ Finolex or equivalent make
- Modular Switches: Anchor Roma/ Polycab/ Legrand/ Great White or equivalent make
- MCB, ELCB and DB: Legrand/ Hagar/ Polycab
- Adequate Electrical points in all rooms
- Provision of AC points in all Bedrooms and Living room
- Television points in Living room and Master Bedroom
- Telephone point in Living room
- Points for Refrigerator, Mixer, Water Purifier, Washing Machine in Kitchen/Utility area
- Exhaust fan provision in all Toilets and Kitchen

LAVISH BATHROOMS



SPECIFICATIONS

Painting

Exterior Wall and Ceiling:

Initial application of one coat of primer upon which there will be an application of two coat of paint - Asian Paints/ New World Paint or equivalent make.

Internal Wall and Ceiling:

Initial application of one coat of primer and two coat putty upon which there will be two coat of paint - Asian Paints/ ISI/ New World Paint or equivalent make.

Metal Works:

Two coat of Enamel Paint/ Asian Paints or equivalent over Zinc Chromatic Primer.

EXTERIOR AMENITIES



THE PATIO - Cabana Seating



MULTI-PURPOSE ROOM

Spacious house that's ideal for all kind of recreation, work or children's activities or to entertain your guests.



PLUMERIA COURT - Meditation Area



STATE-OF-THE-ART GYM

Start your day with an energizing morning workout for the ultimate boost in mood and energy levels. A state-of-the-art gym with latest equipments, awaits you.



FLOOR PLAN

TYPICAL 2ND TO 7TH & 9TH TO 12TH FLOOR PLAN



Minor variations up to (+/-) 3% in actual carpet areas may occur on account of site conditions/columns/finishes etc.

The Project has been Registered by MAHA RERA Project Registration No. P51800046020

Floor plan is for marketing purpose and is to be used as a guide only. Floor plan is intended to give a general indication of the proposed or layout only and may vary in the finished building. All drawings/dimensions shown are for illustrative purpose only and may not be accurate representations of final construction and are not intended to form part of any contract or warranty unless specially incorporated in writing into the contract.



FLOOR PLAN

TYPICAL 13TH TO 14TH, 16TH FLOOR PLAN



Minor variations up to (+/-) 3% in actual carpet areas may occur on account of site conditions/columns/finishes etc.

The Project has been Registered by MAHA RERA Project Registration No. P51800046020

Floor plan is for marketing purpose and is to be used as a guide only. Floor plan is intended to give a general indication of the proposed or layout only and may vary in the finished building. All drawings/dimensions shown are for illustrative purpose only and may not be accurate representations of final construction and are not intended to form part of any contract or warranty unless specially incorporated in writing into the contract.



1 BHK FLOOR CUT

RERA CARPET AREA - 464 SQ. FT



1 BHK FLOOR CUT

RERA CARPET AREA - 441 SQ. FT



VASTY COMPLAINT HOMES



KEY PLAN



KEY PLAN

1 BHK FLOOR CUT

RERA CARPET AREA - 429 SQ. FT



KEY PLAN

1 BHK FLOOR CUT

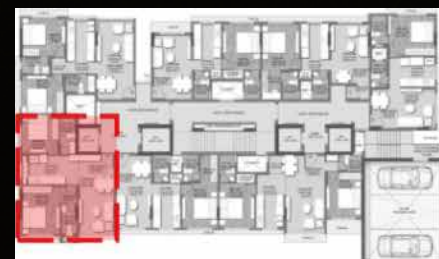
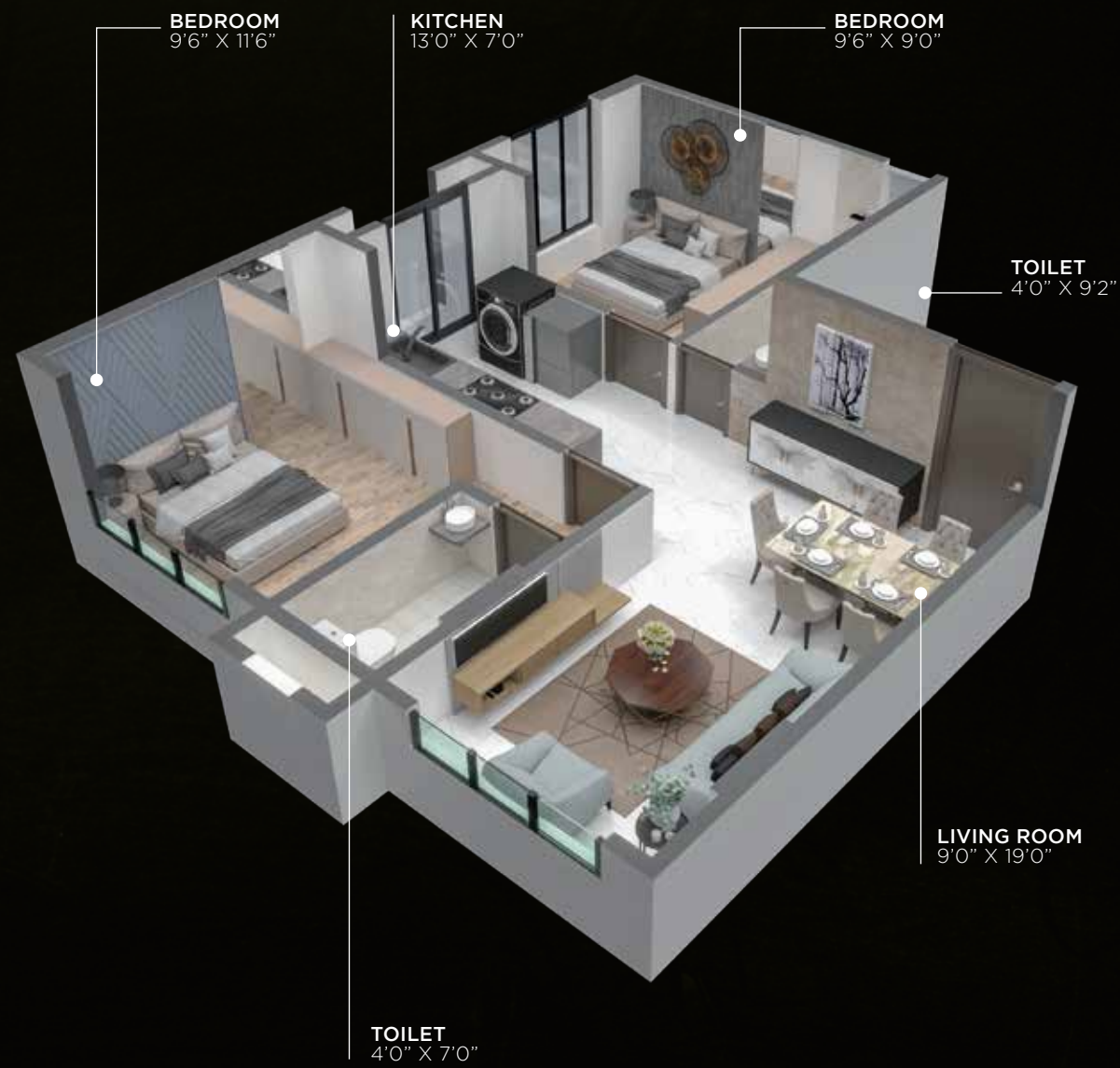
RERA CARPET AREA - 428 SQ. FT



KEY PLAN

2 BHK FLOOR CUT

RERA CARPET AREA - 567 SQ. FT



KEY PLAN

2 BHK FLOOR CUT

RERA CARPET AREA - 573 SQ. FT



KEY PLAN

2 BHK FLOOR CUT

RERA CARPET AREA - 590 SQ. FT



KEY PLAN



Architect
Naren Kuwadekar & Associates

Liasoning Architect
Shilp Associates

MEP Consultant
Craftech Engeering

R.C.C. Consultants
Nitin Jain

Legal Advisor
Law Scribes

Project Approved by



MAHA RERA



VIRTUAL TOUR