

2 & 3 BHK | LUXURIOUS
APARTMENTS



CHINTAMANI
FLORA







COMMON AREAS

- 2 Automatic lifts In Each Block
- Stone finished staircase with railing.
- Elegant entrance foyer on ground floor with marble/granite flooring.

SALIENT FEATURES AND COMMON AMENITIES

- Ample car and 2 wheeler parking space on Hollow plinth and basement.
- Elegant paving in hollow plinth and margin areas
- Bore well for uninterrupted water supply.
- 24/7 CCTV surveillance system of common areas
- Security cabin with CCTV surveillance
- Fire safety system as per the existing norms



SPECIFICATIONS

STRUCTURE

Quality controlled earth quake resistant and RCC Frame Structure with best material components. Full basement and hollow plinth with ample parking. Professionally water-proofed terrace with china mosaic for thermal insulation.

WALLS, PLASTER WORK & WALL FINISH

Internal Chant Mala Plaster With Double Coat Putty and External Walls With a Mala / Sand Face Plaster with Acrylic Paint

FLOORING AND TILING

Premium quality Vitrified Tiles in Entire Apartment
Premium Glaze Wall Tiles Up to Lintel Level In Bathrooms.

PLUMBING AND SANITATION

Premium quality sanitary ware and CP fittings in all bathrooms. High quality UPVC / CPVC plumbing line
Convenient geyser installation location.

DOORS AND WINDOWS

Decorative main door with Laminate/Veneer Finish.
Fully laminated internal wooden flush doors with wooden frame & SS hardware and handles. High quality powder coated Aluminum/Anodized Sliding windows with Granite/Marble Frames In Bathroom Wooden Flush Doors with Granite/Marble Frames.

ELECTRICAL

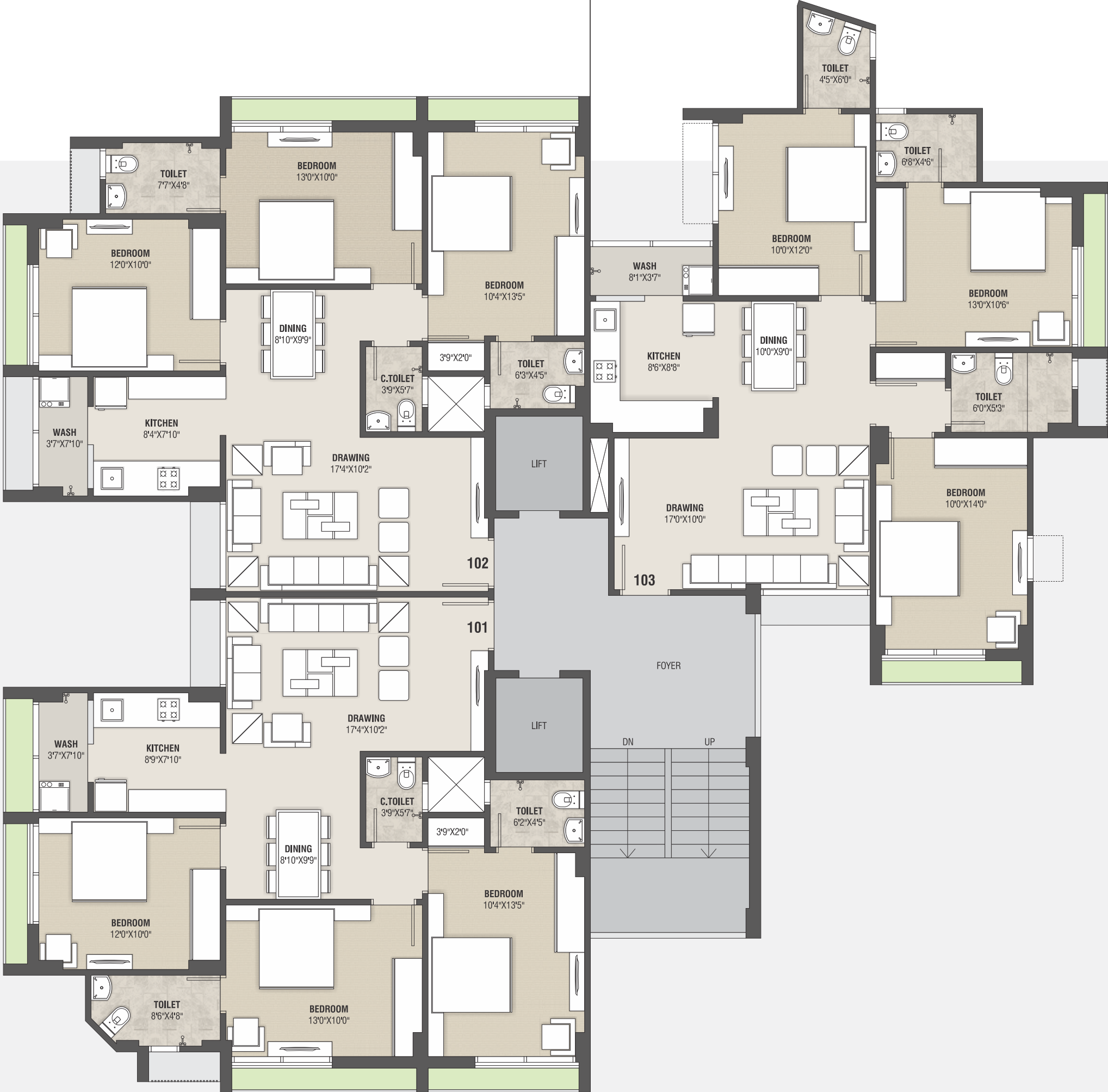
3 phase concealed electrical copper cabling (ISI Fire retardant) with ample electrical points & MCB+ELCB protection. Premium quality modular switches. Provision for Land Line phone and TV connectivity. Geyser points in all bathrooms.

KITCHEN

Premium quality granite kitchen platform with premium SS sink. Premium quality glazed tiles upto lintel level.
Provision for convenient water Purifier installation and Refrigerator Points



BLOCK B





MO : 98981 92892
MO : 94292 10493
MO : 94274 18808
arihantrealty@yahoo.com

ARCHITECT



SITE : OPP. AARYAM FLAT, PULKIT SCHOOL ROAD,
NR. ASHOKNAGAR SOCIETY, FATEHPURA, PALDI, AHMEDABAD - 380 007.