



**MUMBAI METROPOLITAN REGION DEVELOPMENT AUTHORITY**  
**मुंबई महानगर प्रदेश विकास प्राधिकरण**

No. TCP (P-2) / ODC / CC / 3.123 / V / 370 / 2016

Date:

**E-4 MAR 2016**

To,

**Skystar Buildcon Pvt. Ltd.**  
5<sup>th</sup> floor, Suntech Center,  
37-40- Subhash Road,  
Vile Parle (East), Mumbai 400 057.

**Sub: In principle approval for proposed development on land bearing CTS No. 112A of Village Goregaon, ODC, for Environmental Clearance.**

**Ref:** 1) Your letter No. -Nil- dated 14/12/2015  
2) Environment Dept's Circular No. SEIAA-2014/CR.02/TC.3 dated 30/01/2014  
3) Environment Dept. letter No. SEAC2011/CR-715/TC-2 dated 14/03/2013

Sir,

Please refer to Environment Department's letter cited at (2) above whereby your proposal has been granted on terms and conditions with 2.00 FSI. Please also refer to your letter cited at (1) above by which you have submitted drawings with 2.25 FSI for residential user.

Your proposal with 2.25 FSI is scrutinized for the limited purpose of examining the concessions that would be required to be granted by the Metropolitan Commissioner, if any. The Metropolitan Commissioner, MMRDA has approved the concessions and condonations in marginal open spaces and shapes and sizes of R.G.s taking into consideration the hardships conveyed by you. It is informed that the percentage of deficiency in marginal open spaces and sizes & shapes of R.G.s condoned for 1.00 FSI will not change for any FSI higher than 1.0. Accordingly, the drawings with 2.25 FSI are issued herewith.

Further, you are hereby informed that even if Environmental Clearance is granted to the proposal with more than 2.25 FSI, building proposal will be examined w.r.t. the applicable FSI and DCRs as and when the proposal is submitted with all the requisite documents and NOCs.

Thanking you.

Yours faithfully,

**Chief,**

**Town & Country Planning Division**

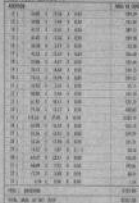
**Encl:** One set of drawings (9 no.)

**Copy to:**

**Shri. B. S. Barot**  
First floor- Yogi Krupa, Plot no. 14A,  
Jawahar Nagar, S. V. Road, Goregaon (W),  
Mumbai 400 062

**Bandra - Kurla Complex, Bandra (East), Mumbai - 400 051.**

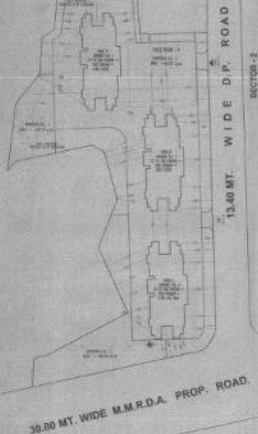
PLATE AREA CALCULATION FROM  
NET PLATE SECTION 1



REPORT OF 18021
STREET PLAN PLAN AND VARIATION (SECTION 1111111111)
DATE OF APPROVAL IS 18021

This document is a copy of a document from the National Archives and Records Administration. It is not a legal document and should not be used for legal purposes. The document is a copy of a document from the National Archives and Records Administration. It is not a legal document and should not be used for legal purposes.

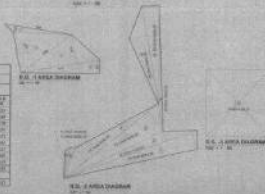
NAME OF CITY OR COUNTY OF RESIDENCE \_\_\_\_\_



### PLOT AREA DIAGRAM



### LOCATION PLAN



DECEMBER 2006 DE VRIES ET AL.

FORWARDED BY AIRMAIL ON JULY 19, 1964, BY AIRMAIL, 10:00 AM, 1964  
TO: ALLIANCE CONFERENCE, 40 EAST MADISON, NEW YORK, N.Y. 10017

5071-11 0/0/0

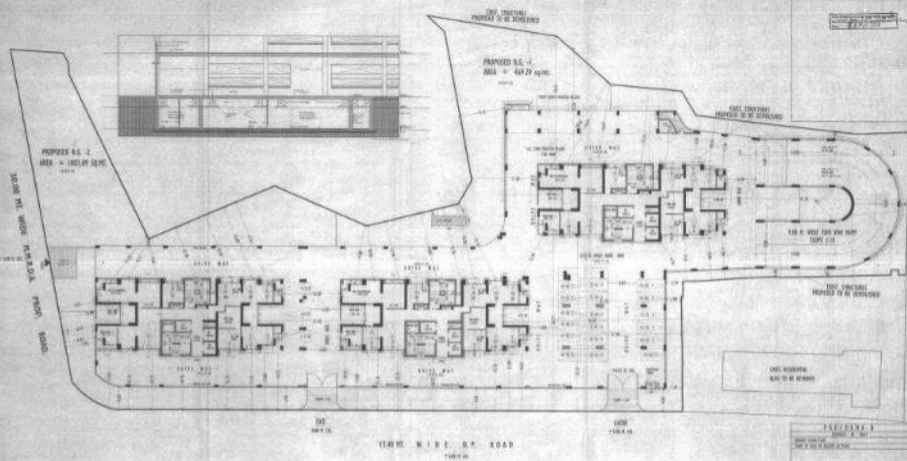
[illegible]

DATE	NO.	NAME	STATUS
12-1-77	1	J. J. JONES	1. JONES
NAME: J. J. JONES & CO. INC. 12-1-77 12:00 PM			



HUGO BOSS

**M/S. B. S. BAROT**  
N.Y. MARSH LICENSE SURVEYOR  
PORT NO. 10-2, NEWARK, N.J. 07102, PHONE AREA  
201 896-0000 FAX 201 896-0000



**GROUND FLOOR PLAN (+0.45 M. LVL.)**

AREA CALCULATION SUMMARY			
EXIST.	NO.	AREA (SQ. FT.)	
DEMOLISHED	01	18	18



ON THE BASIS OF EXIST. STRUCTURE	
NO.	AREA (SQ. FT.)
1	1.17
2	1.17
3	1.17
4	1.17
5	1.17
6	1.17
7	1.17
8	1.17
9	1.17
10	1.17
11	1.17
12	1.17
13	1.17
14	1.17
15	1.17
16	1.17
17	1.17
18	1.17
19	1.17
20	1.17
21	1.17
22	1.17
23	1.17
24	1.17
25	1.17
26	1.17
27	1.17
28	1.17
29	1.17
30	1.17
31	1.17
32	1.17
33	1.17
34	1.17
35	1.17
36	1.17
37	1.17
38	1.17
39	1.17
40	1.17
41	1.17
42	1.17
43	1.17
44	1.17
45	1.17
46	1.17
47	1.17
48	1.17
49	1.17
50	1.17
51	1.17
52	1.17
53	1.17
54	1.17
55	1.17
56	1.17
57	1.17
58	1.17
59	1.17
60	1.17
61	1.17
62	1.17
63	1.17
64	1.17
65	1.17
66	1.17
67	1.17
68	1.17
69	1.17
70	1.17
71	1.17
72	1.17
73	1.17
74	1.17
75	1.17
76	1.17
77	1.17
78	1.17
79	1.17
80	1.17
81	1.17
82	1.17
83	1.17
84	1.17
85	1.17
86	1.17
87	1.17
88	1.17
89	1.17
90	1.17
91	1.17
92	1.17
93	1.17
94	1.17
95	1.17
96	1.17
97	1.17
98	1.17
99	1.17
100	1.17

ON THE BASIS OF EXIST. STRUCTURE AREA 1.17	
NO.	AREA (SQ. FT.)
1	1.17
2	1.17
3	1.17
4	1.17
5	1.17
6	1.17
7	1.17
8	1.17
9	1.17
10	1.17
11	1.17
12	1.17
13	1.17
14	1.17
15	1.17
16	1.17
17	1.17
18	1.17
19	1.17
20	1.17
21	1.17
22	1.17
23	1.17
24	1.17
25	1.17
26	1.17
27	1.17
28	1.17
29	1.17
30	1.17
31	1.17
32	1.17
33	1.17
34	1.17
35	1.17
36	1.17
37	1.17
38	1.17
39	1.17
40	1.17
41	1.17
42	1.17
43	1.17
44	1.17
45	1.17
46	1.17
47	1.17
48	1.17
49	1.17
50	1.17
51	1.17
52	1.17
53	1.17
54	1.17
55	1.17
56	1.17
57	1.17
58	1.17
59	1.17
60	1.17
61	1.17
62	1.17
63	1.17
64	1.17
65	1.17
66	1.17
67	1.17
68	1.17
69	1.17
70	1.17
71	1.17
72	1.17
73	1.17
74	1.17
75	1.17
76	1.17
77	1.17
78	1.17
79	1.17
80	1.17
81	1.17
82	1.17
83	1.17
84	1.17
85	1.17
86	1.17
87	1.17
88	1.17
89	1.17
90	1.17
91	1.17
92	1.17
93	1.17
94	1.17
95	1.17
96	1.17
97	1.17
98	1.17
99	1.17
100	1.17

**PAGE NO. 1**

DATE: 11/11/11

SCALE: 1/8" = 1'-0"

PROJECT: M.S. BAROT

DESIGNER: M.S. BAROT

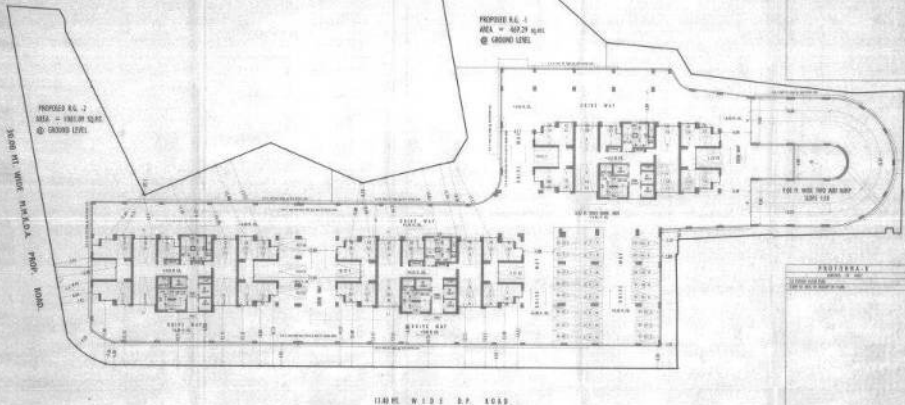
CHECKER: M.S. BAROT

APPROVER: M.S. BAROT

**M.S. BAROT**

ALL RIGHTS RESERVED

NO PART OF THIS DOCUMENT MAY BE REPRODUCED OR TRANSMITTED IN ANY FORM OR BY ANY MEANS, ELECTRONIC OR MECHANICAL, WITHOUT PERMISSION IN WRITING FROM THE AUTHOR.



1ST PODIUM FLOOR PLAN (+0.40 LVL.)

NO.	DESCRIPTION	UNIT	QTY.	REMARKS
1	CONCRETE	CU YD	100	
2	STEEL	TON	10	
3	PAINT	TON	10	



PROVISIONS

1. ALL WORK SHALL BE DONE IN ACCORDANCE WITH THE LATEST EDITIONS OF THE S.P. SPECIFICATIONS FOR CONCRETE, STEEL, AND PAINT.

2. ALL MATERIALS SHALL BE OF THE BEST QUALITY AND SHALL BE SUPPLIED BY THE CONTRACTOR.

DESIGNED BY: M/S. B. S. BAROT

STRUCTURAL DESIGNER: M/S. B. S. BAROT & CO. (P) LTD.  
10, PATEL CHOWK, 10, PATEL CHOWK, PATEL CHOWK, PATEL CHOWK

DATE: 10/10/2010

BY: M/S. B. S. BAROT

FOR: M/S. B. S. BAROT

SCALE: 1/4" = 1'-0"

NOTED: ALL WORK SHALL BE DONE IN ACCORDANCE WITH THE LATEST EDITIONS OF THE S.P. SPECIFICATIONS FOR CONCRETE, STEEL, AND PAINT.

M/S. B. S. BAROT

B.T. BAROT, CHIEF ENGINEER

10, PATEL CHOWK, 10, PATEL CHOWK, PATEL CHOWK, PATEL CHOWK

10, PATEL CHOWK, 10, PATEL CHOWK, PATEL CHOWK, PATEL CHOWK

[illegible]

PROPOSED R.G. -1  
AREA = 1063.09 SQ. FT.  
@ GRADE LEVEL

PROPOSED A.S. - I  
WREA - 04/29/2004  
© GARDEN LEVEL

1346 WE W I D E E P 8040

2ND & 3RD FLOOR FLOOR PLAN (+12.25 TO +13.00 m. LVL.)

Lactation performance			
Model	Log	Linear	Ratio
pre-weaning	90	72	1.00
post-weaning	94	75	1.00
TOTAL	1.00	1.00	1.00



PROTONA 3  
CANTO 10 100  
100 100 100 100 100  
100 100 100 100 100

continued on inside back cover

© 2000 John Wiley & Sons, Inc.

1987-1988

doi:10.1017/S0022292410000506

2018	2019	2020	2021
1.1	1.1	1.1	1.1
1.2	1.2	1.2	1.2
1.3	1.3	1.3	1.3
1.4	1.4	1.4	1.4
1.5	1.5	1.5	1.5
1.6	1.6	1.6	1.6
1.7	1.7	1.7	1.7
1.8	1.8	1.8	1.8
1.9	1.9	1.9	1.9
1.10	1.10	1.10	1.10
1.11	1.11	1.11	1.11
1.12	1.12	1.12	1.12
1.13	1.13	1.13	1.13
1.14	1.14	1.14	1.14
1.15	1.15	1.15	1.15
1.16	1.16	1.16	1.16
1.17	1.17	1.17	1.17
1.18	1.18	1.18	1.18
1.19	1.19	1.19	1.19
1.20	1.20	1.20	1.20
1.21	1.21	1.21	1.21
1.22	1.22	1.22	1.22
1.23	1.23	1.23	1.23
1.24	1.24	1.24	1.24
1.25	1.25	1.25	1.25
1.26	1.26	1.26	1.26
1.27	1.27	1.27	1.27
1.28	1.28	1.28	1.28
1.29	1.29	1.29	1.29
1.30	1.30	1.30	1.30
1.31	1.31	1.31	1.31
1.32	1.32	1.32	1.32
1.33	1.33	1.33	1.33
1.34	1.34	1.34	1.34
1.35	1.35	1.35	1.35
1.36	1.36	1.36	1.36
1.37	1.37	1.37	1.37
1.38	1.38	1.38	1.38
1.39	1.39	1.39	1.39
1.40	1.40	1.40	1.40
1.41	1.41	1.41	1.41
1.42	1.42	1.42	1.42
1.43	1.43	1.43	1.43
1.44	1.44	1.44	1.44
1.45	1.45	1.45	1.45
1.46	1.46	1.46	1.46
1.47	1.47	1.47	1.47
1.48	1.48	1.48	1.48
1.49	1.49	1.49	1.49
1.50	1.50	1.50	1.50
1.51	1.51	1.51	1.51
1.52	1.52	1.52	1.52
1.53	1.53	1.53	1.53
1.54	1.54	1.54	1.54
1.55	1.55	1.55	1.55
1.56	1.56	1.56	1.56
1.57	1.57	1.57	1.57
1.58	1.58	1.58	1.58
1.59	1.59	1.59	1.59
1.60	1.60	1.60	1.60
1.61	1.61	1.61	1.61
1.62	1.62	1.62	1.62
1.63	1.63	1.63	1.63
1.64	1.64	1.64	1.64
1.65	1.65	1.65	1.65
1.66	1.66	1.66	1.66
1.67	1.67	1.67	1.67
1.68	1.68	1.68	1.68
1.69	1.69	1.69	1.69
1.70	1.70	1.70	1.70
1.71	1.71	1.71	1.71
1.72	1.72	1.72	1.72
1.73	1.73	1.73	1.73
1.74	1.74	1.74	1.74
1.75	1.75	1.75	1.75
1.76	1.76	1.76	1.76
1.77	1.77	1.77	1.77
1.78	1.78	1.78	1.78
1.79	1.79	1.79	1.79
1.80	1.80	1.80	1.80
1.81	1.81	1.81	1.81
1.82	1.82	1.82	1.82
1.83	1.83	1.83	1.83
1.84	1.84	1.84	1.84
1.85	1.85	1.85	1.85
1.86	1.86	1.86	1.86
1.87	1.87	1.87	1.

M.S. B. S. BAROT

[illegible]

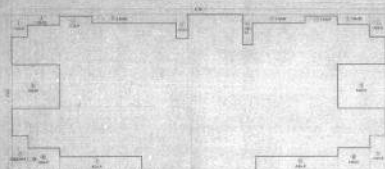
© 2000 Blackwell Science Ltd *Journal of Internal Medicine* 247: 395–401



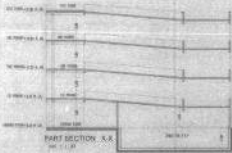








Descriptive Statistics (N = 100)	
Statistic	Value
Mean	5.2
Standard Deviation	1.5
Minimum	1.0
Maximum	9.0
Range	8.0
Skewness	0.2
Kurtosis	-0.5
Sum of Squares	100.0
Sum of Cubes	1000.0
Sum of Fourth Powers	10000.0

[illegible]