

2 BHK TYPE-1

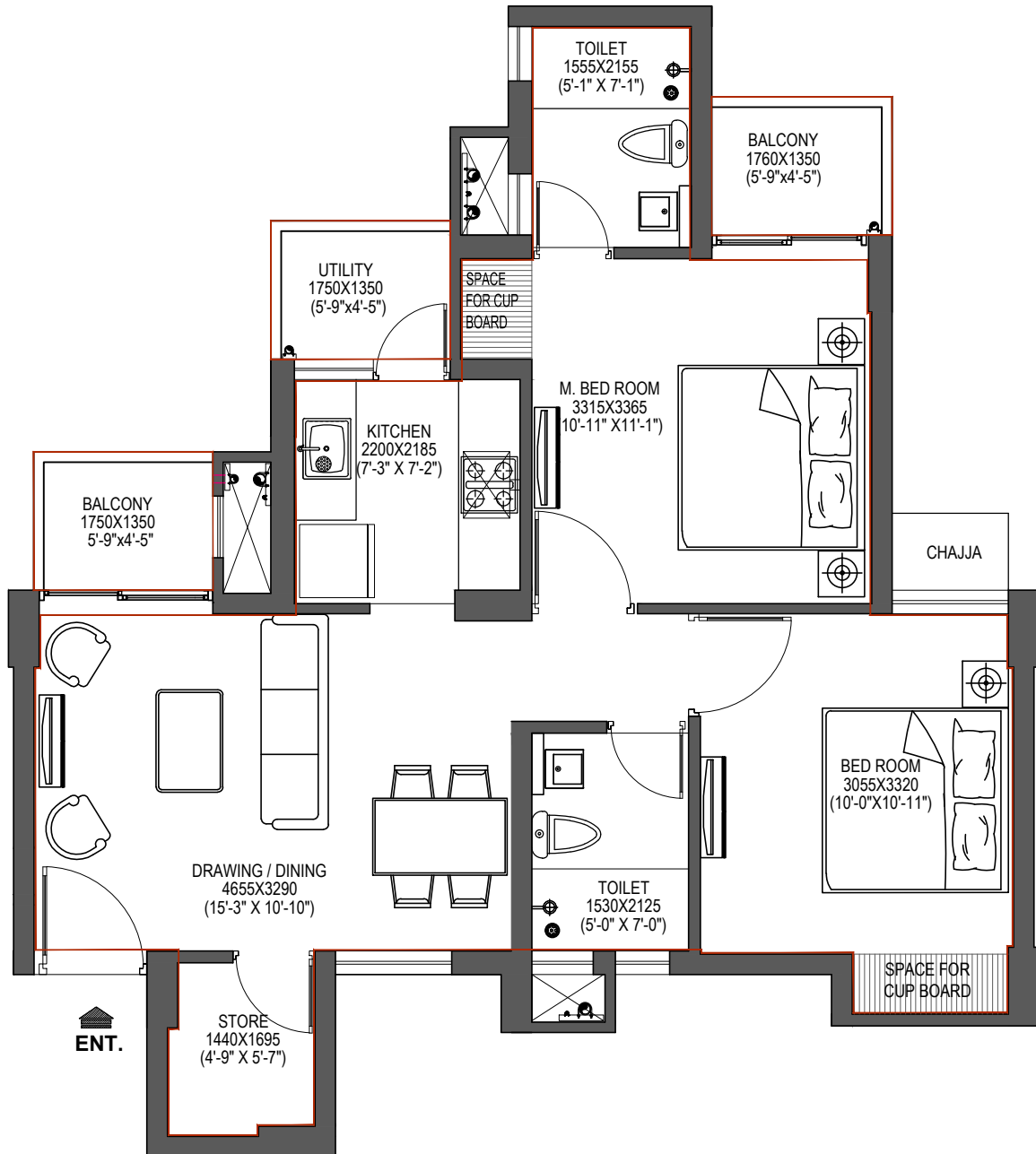
(2 TOILET + 2 BALCONY)

CARPET AREA = 52.48 SQM.

BALCONY AREA = 4.74 SQM.

NOTE :-

1. Furniture & Fixtures indicated are for understanding of circulation within the unit & not part of standard offering. all electrical points shall be based on this furniture layout.
2. The indicated room dimension are from wall face to wall face without plaster margins .
3. The feet - inches dimensions are in approximation
4. Balcony area shown is aggregate of all balconies area.



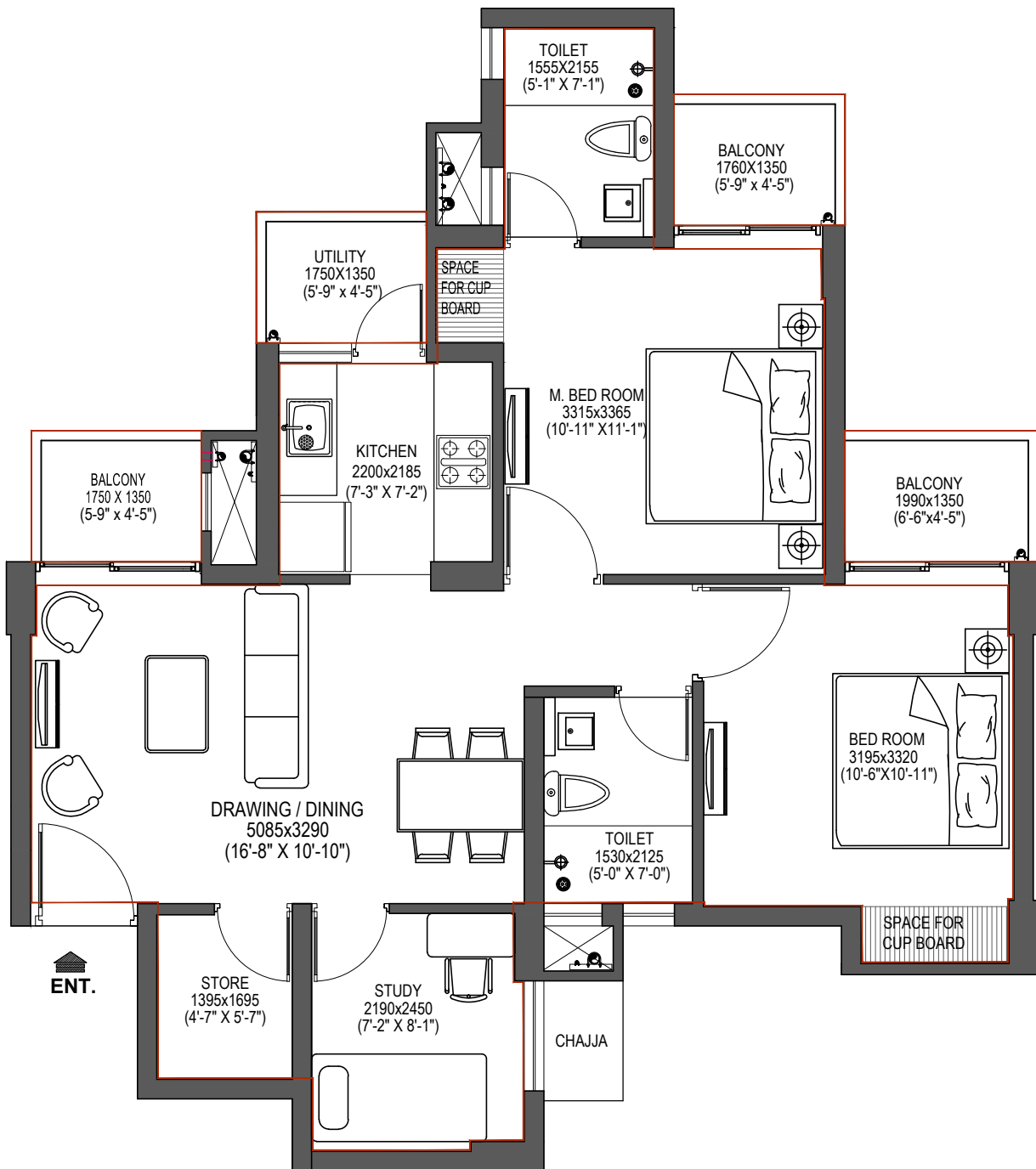
2 BHK TYPE - 2
(2 TOILET + STORE + 3 BALCONY)

CARPET AREA = 55.44 SQM.

BALCONY AREA = 7.10 SQM.

NOTE :-

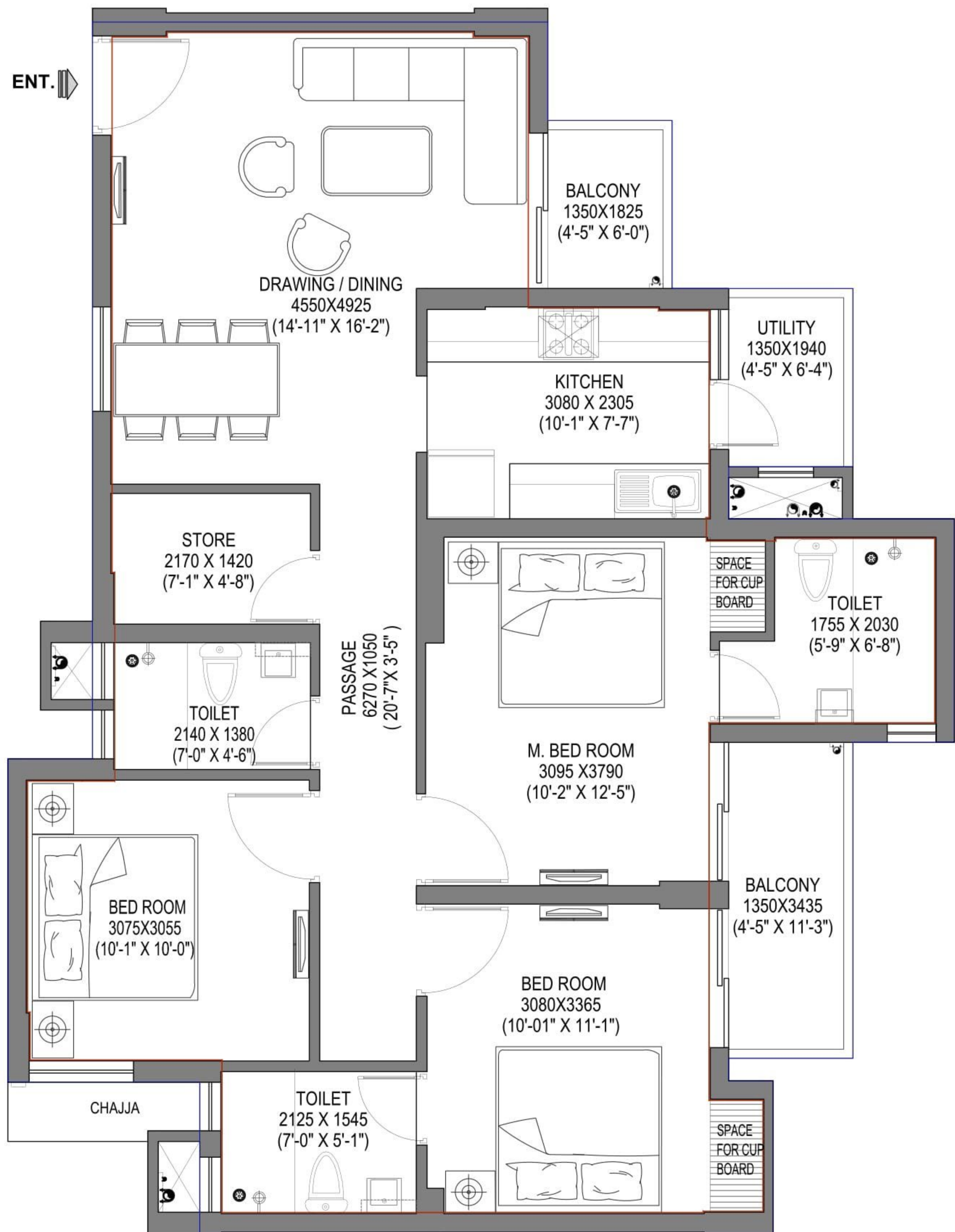
1. Furniture & Fixtures indicated are for understanding of circulation within the unit & not part of standard offering. all electrical points shall be based on this furniture layout.
2. The indicated room dimension are from wall face to wall face without plaster margins .
3. The feet - inches dimensions are in approximation
4. Balcony area shown is aggregate of all balconies area.



2 BHK TYPE -3
(2 TOILET + STORE + STUDY + 4 BALCONY)
CARPET AREA = 63.15 SQM.
BALCONY AREA = 9.79SQM.

NOTE :-

1. Furniture & Fixtures indicated are for understanding of circulation within the unit & not part of standard offering. all electrical points shall be based on this furniture layout.
2. The indicated room dimension are from wall face to wall face without plaster margins .
3. The feet - inches dimensions are in approximation
4. Balcony area shown is aggregate of all balconies area.



3 BHK

(3 TOILET + 3 BALCONY)

CARPET AREA = 83.64 SQM.

BALCONY AREA = 9.72 SQM.

NOTE :-

1. Furniture & Fixtures indicated are for understanding of circulation within the unit & not part of standard offering. all electrical points shall be based on this furniture layout.
2. The indicated room dimension are from wall face to wall face without plaster margins .
3. The feet - inches dimensions are in approximation
4. Balcony area shown is aggregate of all balconies area.